



QUARTERLY STATEMENT

As of March 31, 2017
of the Condition and Affairs of the

Motor Club Insurance Company

NAIC Group Code..... 0, 0 <small>(Current Period) (Prior Period)</small>	NAIC Company Code..... 12487	Employer's ID Number..... 20-3462094
Organized under the Laws of RI	State of Domicile or Port of Entry RI	Country of Domicile US
Incorporated/Organized..... September 14, 2005	Commenced Business..... January 1, 2006	
Statutory Home Office	110 Royal Little Drive..... Providence RI US 02904 <small>(Street and Number) (City or Town, State, Country and Zip Code)</small>	
Main Administrative Office	110 Royal Little Drive..... Providence RI US 02904 <small>(Street and Number) (City or Town, State, Country and Zip Code)</small>	401-868-6520 <small>(Area Code) (Telephone Number)</small>
Mail Address	110 Royal Little Drive..... Providence RI US 02904 <small>(Street and Number or P. O. Box) (City or Town, State, Country and Zip Code)</small>	
Primary Location of Books and Records	110 Royal Little Drive..... Providence RI US 02904 <small>(Street and Number) (City or Town, State, Country and Zip Code)</small>	401-868-6520 <small>(Area Code) (Telephone Number)</small>
Internet Web Site Address	N/A	
Statutory Statement Contact	Russell Stephen Manty <small>(Name)</small> smanty@aaanortheast.com <small>(E-Mail Address)</small>	401-868-6106 <small>(Area Code) (Telephone Number) (Extension)</small> 401-868-2013 <small>(Fax Number)</small>

OFFICERS

Name	Title	Name	Title
1. Mark Allen Shaw	President	2. Francis Xavier Doyle	Vice President and Secretary
3. Russell Stephen Manty	Treasurer	4.	

OTHER

DIRECTORS OR TRUSTEES

Mark Allen Shaw	John Michael Costello	William Alfred Mekrut	Irving Emerson Rogers III
Michael Francis Fitzgerald			

State of..... Rhode Island
County of..... Providence

The officers of this reporting entity being duly sworn, each depose and say that they are the described officers of said reporting entity, and that on the reporting period stated above, all of the herein described assets were the absolute property of the said reporting entity, free and clear from any liens or claims thereon, except as herein stated, and that this statement, together with related exhibits, schedules and explanations therein contained, annexed or referred to, is a full and true statement of all the assets and liabilities and of the condition and affairs of the said reporting entity as of the reporting period stated above, and of its income and deductions therefrom for the period ended, and have been completed in accordance with the NAIC *Annual Statement Instructions and Accounting Practices and Procedures* manual except to the extent that: (1) state law may differ; or, (2) that state rules or regulations require differences in reporting not related to accounting practices and procedures, according to the best of their information, knowledge and belief, respectively. Furthermore, the scope of this attestation by the described officers also includes the related corresponding electronic filing with the NAIC, when required, that is an exact copy (except for formatting differences due to electronic filing) of the enclosed statement. The electronic filing may be requested by various regulators in lieu of or in addition to the enclosed statement.

_____ (Signature) Mark Allen Shaw 1. (Printed Name) President (Title)	_____ (Signature) Francis Xavier Doyle 2. (Printed Name) Vice President and Secretary (Title)	_____ (Signature) Russell Stephen Manty 3. (Printed Name) Treasurer (Title)
--	--	--

Subscribed and sworn to before me
This _____ day of _____

a. Is this an original filing? Yes [X] No []
b. If no: 1. State the amendment number _____
2. Date filed _____
3. Number of pages attached _____

ASSETS

	Current Statement Date			4
	1	2	3	December 31 Prior Year Net Admitted Assets
	Assets	Nonadmitted Assets	Net Admitted Assets (Cols. 1 - 2)	
1. Bonds.....	22,716,075		22,716,075	22,554,750
2. Stocks:				
2.1 Preferred stocks.....			0	
2.2 Common stocks.....	23,151,748		23,151,748	21,756,261
3. Mortgage loans on real estate:				
3.1 First liens.....			0	
3.2 Other than first liens.....			0	
4. Real estate:				
4.1 Properties occupied by the company (less \$.....0 encumbrances).....			0	
4.2 Properties held for the production of income (less \$.....0 encumbrances).....			0	
4.3 Properties held for sale (less \$.....0 encumbrances).....			0	
5. Cash (\$.....26,058), cash equivalents (\$.....0) and short-term investments (\$.....178,883).....	204,941		204,941	289,408
6. Contract loans (including \$.....0 premium notes).....			0	
7. Derivatives.....			0	
8. Other invested assets.....	2,865,949		2,865,949	2,662,028
9. Receivables for securities.....			0	
10. Securities lending reinvested collateral assets.....			0	
11. Aggregate write-ins for invested assets.....	0	0	0	0
12. Subtotals, cash and invested assets (Lines 1 to 11).....	48,938,713	0	48,938,713	47,262,447
13. Title plants less \$.....0 charged off (for Title insurers only).....			0	
14. Investment income due and accrued.....	271,452		271,452	264,456
15. Premiums and considerations:				
15.1 Uncollected premiums and agents' balances in the course of collection.....			0	
15.2 Deferred premiums, agents' balances and installments booked but deferred and not yet due (including \$.....0 earned but unbilled premiums).....			0	
15.3 Accrued retrospective premiums (\$.....0) and contracts subject to redetermination (\$.....0).....			0	
16. Reinsurance:				
16.1 Amounts recoverable from reinsurers.....			0	
16.2 Funds held by or deposited with reinsured companies.....	800,000		800,000	650,990
16.3 Other amounts receivable under reinsurance contracts.....			0	
17. Amounts receivable relating to uninsured plans.....			0	
18.1 Current federal and foreign income tax recoverable and interest thereon.....			0	
18.2 Net deferred tax asset.....			0	
19. Guaranty funds receivable or on deposit.....			0	
20. Electronic data processing equipment and software.....			0	
21. Furniture and equipment, including health care delivery assets (\$.....0).....			0	
22. Net adjustment in assets and liabilities due to foreign exchange rates.....			0	
23. Receivables from parent, subsidiaries and affiliates.....			0	
24. Health care (\$.....0) and other amounts receivable.....			0	
25. Aggregate write-ins for other than invested assets.....	129,148	0	129,148	0
26. Total assets excluding Separate Accounts, Segregated Accounts and Protected Cell Accounts (Lines 12 through 25).....	50,139,313	0	50,139,313	48,177,893
27. From Separate Accounts, Segregated Accounts and Protected Cell Accounts.....			0	
28. Total (Lines 26 and 27).....	50,139,313	0	50,139,313	48,177,893

DETAILS OF WRITE-INS

1101.....			0	
1102.....			0	
1103.....			0	
1198. Summary of remaining write-ins for Line 11 from overflow page.....	0	0	0	0
1199. Totals (Lines 1101 thru 1103 plus 1198) (Line 11 above).....	0	0	0	0
2501. Receivable from quota share agreement.....	129,148		129,148	
2502.....			0	
2503.....			0	
2598. Summary of remaining write-ins for Line 25 from overflow page.....	0	0	0	0
2599. Totals (Lines 2501 thru 2503 plus 2598) (Line 25 above).....	129,148	0	129,148	0

LIABILITIES, SURPLUS AND OTHER FUNDS

	1 Current Statement Date	2 December 31 Prior Year
1. Losses (current accident year \$.....173,089).....	223,852	184,562
2. Reinsurance payable on paid losses and loss adjustment expenses.....		
3. Loss adjustment expenses.....	11,193	9,228
4. Commissions payable, contingent commissions and other similar charges.....		
5. Other expenses (excluding taxes, licenses and fees).....	38,200	37,094
6. Taxes, licenses and fees (excluding federal and foreign income taxes).....		
7.1 Current federal and foreign income taxes (including \$.....380,260 on realized capital gains (losses)).....	26,606	55,159
7.2 Net deferred tax liability.....	1,031,964	501,081
8. Borrowed money \$.....0 and interest thereon \$.....0.....		
9. Unearned premiums (after deducting unearned premiums for ceded reinsurance of \$.....0 and including warranty reserves of \$.....0 and accrued accident and health experience rating refunds including \$.....0 for medical loss ratio rebate per the Public Health Service Act).....	657,066	457,198
10. Advance premium.....		
11. Dividends declared and unpaid:		
11.1 Stockholders.....		
11.2 Policyholders.....		
12. Ceded reinsurance premiums payable (net of ceding commissions).....		
13. Funds held by company under reinsurance treaties.....		
14. Amounts withheld or retained by company for account of others.....		
15. Remittances and items not allocated.....		
16. Provision for reinsurance (including \$.....0 certified).....		
17. Net adjustments in assets and liabilities due to foreign exchange rates.....		
18. Drafts outstanding.....		
19. Payable to parent, subsidiaries and affiliates.....	11,200	5,200
20. Derivatives.....		
21. Payable for securities.....		
22. Payable for securities lending.....		
23. Liability for amounts held under uninsured plans.....		
24. Capital notes \$.....0 and interest thereon \$.....0.....		
25. Aggregate write-ins for liabilities.....	0	0
26. Total liabilities excluding protected cell liabilities (Lines 1 through 25).....	2,000,081	1,249,522
27. Protected cell liabilities.....		
28. Total liabilities (Lines 26 and 27).....	2,000,081	1,249,522
29. Aggregate write-ins for special surplus funds.....	0	0
30. Common capital stock.....	1,620,000	1,620,000
31. Preferred capital stock.....		
32. Aggregate write-ins for other than special surplus funds.....	0	0
33. Surplus notes.....		
34. Gross paid in and contributed surplus.....	30,880,000	30,880,000
35. Unassigned funds (surplus).....	15,639,232	14,428,371
36. Less treasury stock, at cost:		
36.10.000 shares common (value included in Line 30 \$.....0).....		
36.20.000 shares preferred (value included in Line 31 \$.....0).....		
37. Surplus as regards policyholders (Lines 29 to 35, less 36).....	48,139,232	46,928,371
38. Totals (Page 2, Line 28, Col. 3).....	50,139,313	48,177,893

DETAILS OF WRITE-INS

2501.		
2502.		
2503.		
2598. Summary of remaining write-ins for Line 25 from overflow page.....	0	0
2599. Totals (Lines 2501 thru 2503 plus 2598) (Line 25 above).....	0	0
2901.		
2902.		
2903.		
2998. Summary of remaining write-ins for Line 29 from overflow page.....	0	0
2999. Totals (Lines 2901 thru 2903 plus 2998) (Line 29 above).....	0	0
3201.		
3202.		
3203.		
3298. Summary of remaining write-ins for Line 32 from overflow page.....	0	0
3299. Totals (Lines 3201 thru 3203 plus 3298) (Line 32 above).....	0	0

STATEMENT OF INCOME

	1 Current Year to Date	2 Prior Year to Date	3 Prior Year Ended December 31
UNDERWRITING INCOME			
1. Premiums earned:			
1.1 Direct..... (written \$.....0).....			
1.2 Assumed..... (written \$.....503,998).....	304,131	335,055	1,635,903
1.3 Ceded..... (written \$.....0).....			
1.4 Net..... (written \$.....503,998).....	304,131	335,055	1,635,903
DEDUCTIONS:			
2. Losses incurred (current accident year \$.....91,497):			
2.1 Direct.....			
2.2 Assumed.....	186,931	213,715	882,074
2.3 Ceded.....			
2.4 Net.....	186,931	213,715	882,074
3. Loss adjustment expenses incurred.....	9,347	10,686	44,104
4. Other underwriting expenses incurred.....	234,898	244,839	792,949
5. Aggregate write-ins for underwriting deductions.....	0	0	0
6. Total underwriting deductions (Lines 2 through 5).....	431,176	469,240	1,719,127
7. Net income of protected cells.....			
8. Net underwriting gain (loss) (Line 1 minus Line 6 + Line 7).....	(127,045)	(134,185)	(83,224)
INVESTMENT INCOME			
9. Net investment income earned.....	125,254	99,024	601,406
10. Net realized capital gains (losses) less capital gains tax of \$.....(443).....	(827)	4,068	154,886
11. Net investment gain (loss) (Lines 9 + 10).....	124,427	103,092	756,292
OTHER INCOME			
12. Net gain or (loss) from agents' or premium balances charged off (amount recovered \$.....0 amount charged off \$.....0).....	0		
13. Finance and service charges not included in premiums.....			
14. Aggregate write-ins for miscellaneous income.....	0	0	0
15. Total other income (Lines 12 through 14).....	0	0	0
16. Net income before dividends to policyholders, after capital gains tax and before all other federal and foreign income taxes (Lines 8 + 11 + 15).....	(2,618)	(31,093)	673,068
17. Dividends to policyholders.....			
18. Net income, after dividends to policyholders, after capital gains tax and before all other federal and foreign income taxes (Line 16 minus Line 17).....	(2,618)	(31,093)	673,068
19. Federal and foreign income taxes incurred.....	(28,108)	(59,984)	(65,134)
20. Net income (Line 18 minus Line 19) (to Line 22).....	25,490	28,891	738,202
CAPITAL AND SURPLUS ACCOUNT			
21. Surplus as regards policyholders, December 31 prior year.....	46,928,371	45,063,494	45,063,494
22. Net income (from Line 20).....	25,490	28,891	738,202
23. Net transfers (to) from Protected Cell accounts.....			
24. Change in net unrealized capital gains or (losses) less capital gains tax of \$.....548,535.....	1,018,709	192,038	1,066,530
25. Change in net unrealized foreign exchange capital gain (loss).....			
26. Change in net deferred income tax.....	17,652	(2,092)	(33,434)
27. Change in nonadmitted assets.....	149,010	150,616	93,579
28. Change in provision for reinsurance.....			
29. Change in surplus notes.....			
30. Surplus (contributed to) withdrawn from protected cells.....			
31. Cumulative effect of changes in accounting principles.....			
32. Capital changes:			
32.1 Paid in.....			
32.2 Transferred from surplus (Stock Dividend).....			
32.3 Transferred to surplus.....			
33. Surplus adjustments:			
33.1 Paid in.....			
33.2 Transferred to capital (Stock Dividend).....			
33.3 Transferred from capital.....			
34. Net remittances from or (to) Home Office.....			
35. Dividends to stockholders.....			
36. Change in treasury stock.....			
37. Aggregate write-ins for gains and losses in surplus.....	0	0	0
38. Change in surplus as regards policyholders (Lines 22 through 37).....	1,210,861	369,453	1,864,877
39. Surplus as regards policyholders, as of statement date (Lines 21 plus 38).....	48,139,232	45,432,947	46,928,371

DETAILS OF WRITE-INS

0501.			
0502.			
0503.			
0598. Summary of remaining write-ins for Line 5 from overflow page.....	0	0	0
0599. Totals (Lines 0501 thru 0503 plus 0598) (Line 5 above).....	0	0	0
1401.			
1402.			
1403.			
1498. Summary of remaining write-ins for Line 14 from overflow page.....	0	0	0
1499. Totals (Lines 1401 thru 1403 plus 1498) (Line 14 above).....	0	0	0
3701.			
3702.			
3703.			
3798. Summary of remaining write-ins for Line 37 from overflow page.....	0	0	0
3799. Totals (Lines 3701 thru 3703 plus 3798) (Line 37 above).....	0	0	0

CASH FLOW

	1 Current Year to Date	2 Prior Year To Date	3 Prior Year Ended December 31
CASH FROM OPERATIONS			
1. Premiums collected net of reinsurance.....	184,442	157,299	1,546,727
2. Net investment income.....	254,148	224,360	1,147,997
3. Miscellaneous income.....			
4. Total (Lines 1 through 3).....	438,590	381,659	2,694,724
5. Benefit and loss related payments.....	100,820	137,237	698,500
6. Net transfers to Separate Accounts, Segregated Accounts and Protected Cell Accounts.....			
7. Commissions, expenses paid and aggregate write-ins for deductions.....	91,094	94,879	858,498
8. Dividends paid to policyholders.....			
9. Federal and foreign income taxes paid (recovered) net of \$.....0 tax on capital gains (losses).....			251,000
10. Total (Lines 5 through 9).....	191,914	232,116	1,807,998
11. Net cash from operations (Line 4 minus Line 10).....	246,676	149,543	886,726
CASH FROM INVESTMENTS			
12. Proceeds from investments sold, matured or repaid:			
12.1 Bonds.....	2,023,117	1,277,235	5,355,601
12.2 Stocks.....	55,000		482,902
12.3 Mortgage loans.....			
12.4 Real estate.....			
12.5 Other invested assets.....			
12.6 Net gains or (losses) on cash, cash equivalents and short-term investments.....			
12.7 Miscellaneous proceeds.....		166,443	
12.8 Total investment proceeds (Lines 12.1 to 12.7).....	2,078,117	1,443,678	5,838,503
13. Cost of investments acquired (long-term only):			
13.1 Bonds.....	2,322,096	1,582,405	6,448,194
13.2 Stocks.....	87,164	42,699	566,936
13.3 Mortgage loans.....			
13.4 Real estate.....			
13.5 Other invested assets.....			
13.6 Miscellaneous applications.....		(116,013)	
13.7 Total investments acquired (Lines 13.1 to 13.6).....	2,409,260	1,509,091	7,015,130
14. Net increase or (decrease) in contract loans and premium notes.....			
15. Net cash from investments (Line 12.8 minus Line 13.7 and Line 14).....	(331,143)	(65,413)	(1,176,626)
CASH FROM FINANCING AND MISCELLANEOUS SOURCES			
16. Cash provided (applied):			
16.1 Surplus notes, capital notes.....			
16.2 Capital and paid in surplus, less treasury stock.....			
16.3 Borrowed funds.....			
16.4 Net deposits on deposit-type contracts and other insurance liabilities.....			
16.5 Dividends to stockholders.....			
16.6 Other cash provided (applied).....		(116,013)	
17. Net cash from financing and miscellaneous sources (Lines 16.1 through 16.4 minus Line 16.5 plus Line 16.6).....	0	(116,013)	0
RECONCILIATION OF CASH, CASH EQUIVALENTS AND SHORT-TERM INVESTMENTS			
18. Net change in cash, cash equivalents and short-term investments (Line 11 plus Line 15 plus Line 17).....	(84,467)	(31,883)	(289,900)
19. Cash, cash equivalents and short-term investments:			
19.1 Beginning of year.....	289,408	579,308	579,308
19.2 End of period (Line 18 plus Line 19.1).....	204,941	547,425	289,408

Note: Supplemental disclosures of cash flow information for non-cash transactions:

20.0001			
---------------	--	--	--

NOTES TO FINANCIAL STATEMENTS

Note 1 - Summary of Significant Accounting Policies

A. Accounting Practices

The accompanying financial statements of Motor Club Insurance Company (the Company) have been prepared in conformity with the accounting practices prescribed by the National Association of Insurance Commissioners (NAIC) or otherwise permitted by the State of Rhode Island Department of Business Regulation - Insurance Division. The NAIC Accounting Practices and Procedures manual, version effective January 1, 2001, (NAIC SAP) has been adopted as a component of prescribed or permitted practice by the State of Rhode Island.

Net income for the three months ended March 31, 2017 amounts to \$25,490 and surplus as of March 31, 2017 amounts to \$48,139,232.

B. Use of Estimates

The preparation of financial statements in conformity with NAIC SAP requires management to make estimates and assumptions that affect the reported amounts of assets and liabilities and disclosure of contingent assets and liabilities at the date of the financial statements and the reported amounts of revenues and expenses during the period. Actual results could differ from those estimates.

C. Accounting Policies

Net investment income earned consists primarily of interest and dividends less related expenses. Interest is recognized on an accrual basis and dividends are recognized on an ex-dividend basis. Net realized capital gains (losses) are recognized on a specific identification basis when securities are sold, redeemed, or otherwise disposed. Realized capital losses include writedowns for impairments considered to be other than temporary.

In addition, the Company uses the following accounting policies:

1. Short-term investments are accounted for in the same manner as similar long-term investments in accordance with Statement of Statutory Accounting Principles (SSAP) No. 2.
2. Bonds are generally stated at amortized cost using the scientific method. Bonds containing call provisions are amortized to either the call or maturity value / date, whichever produces the lowest asset value (yield to worst), in accordance with SSAP No. 26. Bonds that are designated highest-quality and high-quality (NAIC designation 1 and 2, respectively) are reported at amortized cost. Non-investment grade bonds with NAIC designations of 3 through 6 are stated at the lower of amortized value or fair value.
3. Common stocks are stated at fair value.
4. The Company has no preferred stocks.
5. The Company has no mortgage loans.
6. Investment grade loan-backed securities are stated at amortized cost. The retrospective adjustment method is used to determine amortized cost for all loan-backed securities. Non-investment grade loan-backed securities with NAIC designations of 3 through 6 are stated at the lower of amortized cost or fair value.
7. The Company has no investments in subsidiaries and affiliated companies.
8. Investments in joint ventures and partnerships are stated at the underlying audited, in accordance with accounting principles generally accepted in the United States (GAAP), equity value.
9. The Company has no derivatives.
10. The Company anticipates investment income as a factor in the premium deficiency calculation, in accordance with SSAP No. 53, Property - Casualty Contracts - Premiums.
11. Unpaid losses and loss adjustment expenses include an amount determined from individual case estimates and loss reports and an amount, based on past experience, for losses incurred but not reported. Such liabilities are necessarily based on assumptions and estimates and while management believes the amount is adequate, the ultimate liability may be in excess of or less than the amount provided. The methods for making such estimates and for establishing the resulting liability is continually reviewed and any adjustments are reflected in the period determined.
12. The Company has no prepaid expenses, electronic data processing equipment, software, furniture, vehicles, other equipment, or leasehold improvements.
13. The Company does not write major medical insurance with prescription drug coverage.

NOTES TO FINANCIAL STATEMENTS

Note 2 - Accounting Changes and Corrections of Errors

Not applicable.

Note 3 - Business Combinations and Goodwill

Not applicable.

Note 4 - Discontinued Operations

Not applicable.

Note 5 – Investments

A. Mortgage Loans

Not applicable.

B. Troubled Debt Restructuring for Creditors

Not applicable.

C. Reverse Mortgages

Not applicable.

D. Loan-Backed and Structured Securities

1. The Company did not make prepayment assumptions for loan-backed or structured securities.

2. The Company did not recognize other-than-temporary impairments for loan-backed securities.

3. The Company did not recognize other-than-temporary impairments for loan-backed securities.

4. Loan-backed and structured securities that were in unrealized loss positions as of March 31, 2017, stratified based on length of time continuously in these unrealized loss positions, are as follows:

- | | |
|---|----------|
| a. Aggregate amount of unrealized loss | |
| i. Less than twelve months | \$ - 0 - |
| ii. Twelve months or longer | \$ - 0 - |
| b. Aggregate fair value of securities with unrealized loss | |
| i. Less than twelve months | \$ - 0 - |
| ii. Twelve months or longer | \$ - 0 - |
| c. Aggregate statement value of securities with unrealized loss | |
| i. Less than twelve months | \$ - 0 - |
| ii. Twelve months or longer | \$ - 0 - |

5. All loan-backed and structured securities in an unrealized loss position were reviewed to determine whether other-than-temporary impairments should be recognized. The Company asserts that it has the intent and ability to hold these securities long enough to allow the cost basis of these securities to be recovered. It is possible that the Company could recognize other-than-temporary impairments in the future on some of the securities, if future events, information, and passage of time causes it to conclude that declines in value are other-than-temporary.

E. Repurchase Agreements and/or Securities Lending Transactions

For repurchase agreements, the Company requires a minimum 105% of the fair value of securities purchased under repurchase agreements to be maintained as collateral. There were no open repurchase agreements as of March 31, 2017.

F. Writedowns for Impairments of Real Estate, Real Estate Sales, Retail Land Sales Operations, and Real Estate with Participating Mortgage Loan Features

Not applicable.

NOTES TO FINANCIAL STATEMENTS

- G. Low Income Housing Tax Credits
Not applicable.
- H. Restricted Assets
Not applicable.
- I. Working Capital Finance Investments
Not applicable.
- J. Offsetting and Netting of Assets and Liabilities
Not applicable.
- K. Structured Notes
Not applicable.
- L. 5* Securities
Not applicable.
- M. Short Sales
Not applicable.
- N. Prepayment Penalty and Acceleration Fees
Not applicable.

Note 6 - Joint Ventures, Partnerships, and Limited Liability Companies

- A. Detail for Those Greater than 10% of Admitted Assets
Not applicable.
- B. Writedowns for Impairment of Joint Ventures, Partnerships, and LLCs
Not applicable.

Note 7 - Investment Income

No significant change.

Note 8 - Derivative Instruments

Not applicable.

Note 9 - Income Taxes

No significant change.

Note 10 - Information Concerning Parent, Subsidiaries, Affiliates, and Other Related Parties

No significant change.

Note 11 - Debt

Not applicable.

Note 12 - Retirement Plans, Deferred Compensation, Postemployment Benefits, Compensated Absences, and Other Postretirement Benefit Plans

Not applicable.

NOTES TO FINANCIAL STATEMENTS

Note 13 - Capital and Surplus, Dividend Restrictions, and Quasi-Reorganizations

No significant change.

Note 14 – Liabilities, Contingencies, and Assessments

Not applicable.

Note 15 - Leases

Not applicable.

Note 16 - Information about Financial Instruments with Off-Balance Sheet Risk

Not applicable.

Note 17 - Sale, Transfer, and Servicing of Financial Assets and Extinguishments of Liabilities

Not applicable.

Note 18 - Gain or Loss from Uninsured Plans and the Uninsured Portion of Partially Insured Plans

Not applicable.

Note 19 - Direct Premium Written / Produced by Managing General Agents / Third Party Administrators

Not applicable.

Note 20 - Fair Value Measurements

A. Inputs Used for Assets and Liabilities Measured and Reported at Fair Value

1. Items Measured and Reported at Fair Value by Levels 1, 2, and 3

Fair value is measured utilizing a three-tier hierarchy to classify fair value measurements as follows:

Level 1 - Values measured using quoted prices in active markets for identical assets and liabilities

Level 2 - Values measured using other significant observable inputs such as quoted prices for similar assets and liabilities, interest rates, credit risk, etc.

Level 3 - Values measured using significant unobservable inputs, including internal assumptions

The fair values of the Company's investments are determined using Level 1 inputs for common stocks, cash, cash equivalents, and short-term investments and Level 2 inputs for bonds.

2. Rollforward of Level 3 Items

The Company has no assets or liabilities measured at fair value in the Level 3 category.

3. Policy on Transfers Into and Out of Level 3

The Company had no transfers into or out of Level 3 during the current period.

4. Inputs and Techniques Used for Level 2 and Level 3 Fair Values

Not applicable.

5. Derivative Fair Values

Not applicable.

B. Other Fair Value Disclosures

Not applicable.

NOTES TO FINANCIAL STATEMENTS

C. Fair Values for All Financial Instruments by Levels 1, 2, and 3

Type of Financial Instrument	Fair Value	Admitted Value	Level 1	Level 2	Level 3	Not Practicable (Carrying Value)
Bonds	22,894,765	22,716,075		22,894,765		
Common stocks	23,151,748	23,151,748	23,151,748			
Cash, cash equivalents, and short-term investments	204,941	204,941	204,941			
Total assets	46,251,454	46,072,764	23,356,689	22,894,765		

D. Items for which Not Practicable to Estimate Fair Values

Not applicable.

Note 21 - Other Items

Not applicable.

Note 22 - Events Subsequent

Subsequent events have been considered through May 15, 2017, the date of issuance of these statutory financial statements. There were no events occurring subsequent to the end of the quarter that merited recognition or disclosure in these statements.

Note 23 - Reinsurance

A. Unsecured Reinsurance Recoverables

Not applicable.

B. Reinsurance Recoverables in Dispute

Not applicable.

C. Reinsurance Assumed, Ceded, and Protected Cells

Effective July 8, 2014, the Company entered into a travel insurance quota share reinsurance agreement with BCS Insurance Company to assume 100% of certain travel insurance risks. The State of Rhode Island Department of Business Regulation – Insurance Division approved the agreement during 2014. All of the Company's underwriting results during 2017 are from the quota share agreement.

	Assumed Unearned Premiums as of March 31, 2017	Assumed Commission Equity	Ceded Unearned Premiums	Ceded Commission Equity	Net Unearned Premiums as of March 31, 2017	Net Commission Equity
a. Affiliates	\$0	\$0	\$0	\$0	\$0	\$0
b. All Others	\$657,066	\$0	\$0	\$0	\$657,066	\$0
c. Totals	\$657,066	\$0	\$0	\$0	\$657,066	\$0

D. Uncollectible Reinsurance

Not applicable.

E. Commutation of Ceded Reinsurance

Not applicable.

F. Retroactive Reinsurance

Not applicable.

NOTES TO FINANCIAL STATEMENTS

G. Reinsurance Accounted for as a Deposit

Not applicable.

H. Run-off Arrangements

Not applicable.

I. Certified Reinsurer Rating Downgraded or Status Subject to Revocation

Not applicable.

J. Reinsurance Agreements Qualifying for Reinsurer Aggregation

Not applicable.

Note 24 - Retrospectively Rated Contracts and Contracts Subject to Redetermination

Not applicable.

Note 25 - Changes in Incurred Losses and Loss Adjustment Expenses

Current year changes in estimates of the costs of prior year losses and LAE affect the current year Statement of Income. Increases in those estimates increase current year expense and are referred to as unfavorable development or prior year reserve shortages. Decreases in those estimates decrease current year expense and are referred to as favorable development or prior year reserve redundancies. The estimated cost of loss and LAE attributed to insured events of prior years decreased by \$23,000 during the current period. The favorable development of \$23,000 is approximately 11.86% of the unpaid losses and LAE of \$194,000 as of December 31, 2016.

Note 26 - Intercompany Pooling Arrangements

Not applicable.

Note 27 - Structured Settlements

Not applicable.

Note 28 - Health Care Receivables

A. and B. Not applicable.

Note 29 - Participating Policies

Not applicable.

Note 30 - Premium Deficiency Reserves

Not applicable.

Note 31 - High Deductibles

Not applicable.

Note 32 - Discounting of Liabilities for Unpaid Losses or Unpaid Loss Adjustment Expenses

Not applicable.

Note 33 - Asbestos and Environmental Reserves

Not applicable.

NOTES TO FINANCIAL STATEMENTS

Note 34 - Subscriber Savings Accounts

Not applicable.

Note 35 - Multiple Peril Crop Insurance

Not applicable.

Note 36 - Financial Guaranty Insurance

A. and B. Not applicable.

GENERAL INTERROGATORIES

PART 1 - COMMON INTERROGATORIES

GENERAL

- 1.1 Did the reporting entity experience any material transactions requiring the filing of Disclosure of Material Transactions with the State of Domicile, as required by the Model Act? Yes [] No [X]
- 1.2 If yes, has the report been filed with the domiciliary state? Yes [] No []
- 2.1 Has any change been made during the year of this statement in the charter, by-laws, articles of incorporation, or deed of settlement of the reporting entity? Yes [] No [X]
- 2.2 If yes, date of change: _____
- 3.1 Is the reporting entity a member of an Insurance Holding Company System consisting of two or more affiliated persons, one or more of which is an insurer? If yes, complete Schedule Y, Parts 1 and 1A. Yes [X] No []
- 3.2 Have there been any substantial changes in the organizational chart since the prior quarter end? Yes [] No [X]
- 3.3 If the response to 3.2 is yes, provide a brief description of those changes.
- 4.1 Has the reporting entity been a party to a merger or consolidation during the period covered by this statement? Yes [] No [X]
- 4.2 If yes, provide name of entity, NAIC Company Code, and state of domicile (use two letter state abbreviation) for any entity that has ceased to exist as a result of the merger or consolidation.

1 Name of Entity	2 NAIC Company Code	3 State of Domicile

5. If the reporting entity is subject to a management agreement, including third-party administrator(s), managing general agent(s), attorney-in-fact, or similar agreement, have there been any significant changes regarding the terms of the agreement or principals involved? If yes, attach an explanation. Yes [] No [X] N/A []
- 6.1 State as of what date the latest financial examination of the reporting entity was made or is being made. 12/31/2014
- 6.2 State the as of date that the latest financial examination report became available from either the state of domicile or the reporting entity. This date should be the date of the examined balance sheet and not the date the report was completed or released. 12/31/2014
- 6.3 State as of what date the latest financial examination report became available to other states or the public from either the state of domicile or the reporting entity. This is the release date or completion date of the examination report and not the date of the examination (balance sheet date). 08/14/2015
- 6.4 By what department or departments?
- 6.5 Have all financial statement adjustments within the latest financial examination report been accounted for in a subsequent financial statement filed with Departments? Yes [] No [] N/A [X]
- 6.6 Have all of the recommendations within the latest financial examination report been complied with? Yes [] No [] N/A [X]
- 7.1 Has this reporting entity had any Certificates of Authority, licenses or registrations (including corporate registration, if applicable) suspended or revoked by any governmental entity during the reporting period? Yes [] No [X]
- 7.2 If yes, give full information:
- 8.1 Is the company a subsidiary of a bank holding company regulated with the Federal Reserve Board? Yes [] No [X]
- 8.2 If response to 8.1 is yes, please identify the name of the bank holding company.

- 8.3 Is the company affiliated with one or more banks, thrifts or securities firms? Yes [X] No []
- 8.4 If the response to 8.3 is yes, please provide below the names and location (city and state of the main office) of any affiliates regulated by a federal regulatory services agency [i.e. the Federal Reserve Board (FRB), the Office of the Comptroller of the Currency (OCC), the Federal Deposit Insurance Corporation (FDIC) and the Securities Exchange Commission (SEC)] and identify the affiliate's primary federal regulator].

1 Affiliate Name	2 Location (City, State)	3 FRB	4 OCC	5 FDIC	6 SEC
N/A					

- 9.1 Are the senior officers (principal executive officer, principal financial officer, principal accounting officer or controller, or persons performing similar functions) of the reporting entity subject to a code of ethics, which includes the following standards? Yes [X] No []
- (a) Honest and ethical conduct, including the ethical handling of actual or apparent conflicts of interest between personal and professional relationships;
- (b) Full, fair, accurate, timely and understandable disclosure in the periodic reports required to be filed by the reporting entity;
- (c) Compliance with applicable governmental laws, rules and regulations;
- (d) The prompt internal reporting of violations to an appropriate person or persons identified in the code; and
- (e) Accountability for adherence to the code.
- 9.11 If the response to 9.1 is No, please explain:
- 9.2 Has the code of ethics for senior managers been amended? Yes [] No [X]
- 9.21 If the response to 9.2 is Yes, provide information related to amendment(s).
- 9.3 Have any provisions of the code of ethics been waived for any of the specified officers? Yes [] No [X]
- 9.31 If the response to 9.3 is Yes, provide the nature of any waiver(s).

FINANCIAL

- 10.1 Does the reporting entity report any amounts due from parent, subsidiaries or affiliates on Page 2 of this statement? Yes [] No [X]

GENERAL INTERROGATORIES

PART 1 - COMMON INTERROGATORIES

10.2 If yes, indicate any amounts receivable from parent included in the Page 2 amount: \$ 0

INVESTMENT

11.1 Were any of the stocks, bonds, or other assets of the reporting entity loaned, placed under option agreement, or otherwise made available for use by another person? (Exclude securities under securities lending agreements.) Yes [] No [X]

11.2 If yes, give full and complete information relating thereto:

12. Amount of real estate and mortgages held in other invested assets in Schedule BA: \$ 0

13. Amount of real estate and mortgages held in short-term investments: \$ 0

14.1 Does the reporting entity have any investments in parent, subsidiaries and affiliates? Yes [] No [X]

14.2 If yes, please complete the following:

	1 Prior Year End Book/Adjusted Carrying Value	2 Current Quarter Book/Adjusted Carrying Value
14.21 Bonds	\$ 0	\$ 0
14.22 Preferred Stock	0	0
14.23 Common Stock	0	0
14.24 Short-Term Investments	0	0
14.25 Mortgage Loans on Real Estate	0	0
14.26 All Other	0	0
14.27 Total Investment in Parent, Subsidiaries and Affiliates (Subtotal Lines 14.21 to 14.26)	\$ 0	\$ 0
14.28 Total Investment in Parent included in Lines 14.21 to 14.26 above	\$ 0	\$ 0

15.1 Has the reporting entity entered into any hedging transactions reported on Schedule DB? Yes [] No [X]

15.2 If yes, has a comprehensive description of the hedging program been made available to the domiciliary state? Yes [] No []

If no, attach a description with this statement.

16. For the reporting entity's security lending program, state the amount of the following as of current statement date:

16.1 Total fair value of reinvested collateral assets reported on Schedule DL, Parts 1 and 2: \$ 0

16.2 Total book adjusted/carrying value of reinvested collateral assets reported on Schedule DL, Parts 1 and 2: \$ 0

16.3 Total payable for securities lending reported on the liability page: \$ 0

17. Excluding items in Schedule E-Part 3-Special Deposits, real estate, mortgage loans and investments held physically in the reporting entity's offices, vaults or safety deposit boxes, were all stocks, bonds and other securities, owned throughout the current year held pursuant to a custodial agreement with a qualified bank or trust company in accordance with Section 1, III - General Examination Considerations, F. Outsourcing of Critical Functions, Custodial or Safekeeping Agreements of the NAIC *Financial Condition Examiners Handbook*? Yes [X] No []

17.1 For all agreements that comply with the requirements of the NAIC *Financial Condition Examiners Handbook*, complete the following:

1 Name of Custodian(s)	2 Custodian Address
State Street Bank and Trust Company	1200 Crown Colony Drive, 5th Floor, Quincy, MA 02169

17.2 For all agreements that do not comply with the requirements of the NAIC *Financial Condition Examiners Handbook*, provide the name, location and a complete explanation:

1 Name(s)	2 Location(s)	3 Complete Explanation(s)

17.3 Have there been any changes, including name changes, in the custodian(s) identified in 17.1 during the current quarter? Yes [] No [X]

17.4 If yes, give full and complete information relating thereto:

1 Old Custodian	2 New Custodian	3 Date of Change	4 Reason

17.5 Investment management – Identify all investment advisors, investment managers, broker/dealers, including individuals that have the authority to make investment decisions on behalf of the reporting entity. For assets that are managed internally by employees of the reporting entity, note as such ["...that have access to the investment accounts", "handle securities"].

1 Name of Firm or Individual	2 Affiliation
Income Research & Management	U
Prime, Buchholz & Associates, Inc.	U

17.5097 For those firms/individuals listed in the table for Question 17.5, do any firms/individuals unaffiliated with the reporting entity (i.e., designated with a "U") manage more than 10% of the reporting entity's assets? Yes [X] No []

17.5098 For firms/individuals unaffiliated with the reporting entity (i.e., designated with a "U") listed in the table for Question 17.5, does the total assets under management aggregate to more than 50% of the reporting entity's assets? Yes [] No [X]

17.6 For those firms or individuals listed in the table for 17.5 with an affiliation code of "A" (affiliated) or "U" (unaffiliated), provide the information for the table below.

1 Central Registration Depository Number	2 Name of Firm or Individual	3 Legal Entity Identifier (LEI)	4 Registered With	5 Investment Management Agreement (IMA) Filed
104863	Income Research & Management		U.S. Securities and Exchange Commission	No
106455	Prime, Buchholz & Associates, Inc.		U.S. Securities and Exchange Commission	No

18.1 Have all the filing requirements of the *Purposes and Procedures Manual of the NAIC Investment Analysis Office* been followed? Yes [X] No []

18.2 If no, list exceptions:

GENERAL INTERROGATORIES (continued)

PART 2 – PROPERTY & CASUALTY INTERROGATORIES

1. If the reporting entity is a member of a pooling arrangement, did the agreement or the reporting entity's participation change? Yes [] No [] N/A [X]
 If yes, attach an explanation.

2. Has the reporting entity reinsured any risk with any other reporting entity and agreed to release such entity from liability, in whole or in part, from any loss that may occur on the risk, or portion thereof, reinsured? Yes [] No [X]
 If yes, attach an explanation.

3.1 Have any of the reporting entity's primary reinsurance contracts been canceled? Yes [] No [X]

3.2 If yes, give full and complete information thereto:

4.1 Are any of the liabilities for unpaid losses and loss adjustment expenses other than certain workers' compensation tabular reserves (see *Annual Statement Instructions* pertaining to disclosure of discounting for definition of "tabular reserves,") discounted at a rate of interest greater than zero? Yes [] No [X]

4.2 If yes, complete the following schedule:

1 Line of Business	2 Maximum Interest	3 Disc. Rate	Total Discount				Discount Taken During Period			
			4 Unpaid Losses	5 Unpaid LAE	6 IBNR	7 Total	8 Unpaid Losses	9 Unpaid LAE	10 IBNR	11 Total
	0.000	0.000	0	0	0	0	0	0	0	0
Total	XXX	XXX	0	0	0	0	0	0	0	0

5.1 Operating Percentages:

5.1 A&H loss percent	0.000%
5.2 A&H cost containment percent	0.000%
5.3 A&H expense percent excluding cost containment expenses	0.000%

6.1 Do you act as a custodian for health savings accounts? Yes [] No [X]

6.2 If yes, please provide the amount of custodial funds held as of the reporting date. \$ 0

6.3 Do you act as an administrator for health savings accounts? Yes [] No [X]

6.4 If yes, please provide the amount of funds administered as of the reporting date. \$ 0

SCHEDULE F - CEDED REINSURANCE

Showing All New Reinsurers - Current Year to Date

1 NAIC Company Code	2 ID Number	3 Name of Reinsurer	4 Domiciliary Jurisdiction	5 Type of Reinsurer	6 Certified Reinsurer Rating (1 through 6)	7 Effective Date of Certified Reinsurer Rating
------------------------------	----------------	------------------------	----------------------------------	---------------------------	---	--

NONE

SCHEDULE T - EXHIBIT OF PREMIUMS WRITTEN

Current Year to Date - Allocated by States and Territories

States, Etc.	1 Active Status	Direct Premiums Written		Direct Losses Paid (Deducting Salvage)		Direct Losses Unpaid	
		2 Current Year to Date	3 Prior Year to Date	4 Current Year to Date	5 Prior Year to Date	6 Current Year to Date	7 Prior Year to Date
1. Alabama.....AL	N						
2. Alaska.....AK	N						
3. Arizona.....AZ	N						
4. Arkansas.....AR	N						
5. California.....CA	N						
6. Colorado.....CO	N						
7. Connecticut.....CT	N						
8. Delaware.....DE	N						
9. District of Columbia.....DC	N						
10. Florida.....FL	N						
11. Georgia.....GA	N						
12. Hawaii.....HI	N						
13. Idaho.....ID	N						
14. Illinois.....IL	N						
15. Indiana.....IN	N						
16. Iowa.....IA	N						
17. Kansas.....KS	N						
18. Kentucky.....KY	N						
19. Louisiana.....LA	N						
20. Maine.....ME	N						
21. Maryland.....MD	N						
22. Massachusetts.....MA	N						
23. Michigan.....MI	N						
24. Minnesota.....MN	N						
25. Mississippi.....MS	N						
26. Missouri.....MO	N						
27. Montana.....MT	N						
28. Nebraska.....NE	N						
29. Nevada.....NV	N						
30. New Hampshire.....NH	N						
31. New Jersey.....NJ	N						
32. New Mexico.....NM	N						
33. New York.....NY	N						
34. North Carolina.....NC	N						
35. North Dakota.....ND	N						
36. Ohio.....OH	N						
37. Oklahoma.....OK	N						
38. Oregon.....OR	N						
39. Pennsylvania.....PA	N						
40. Rhode Island.....RI	L						
41. South Carolina.....SC	N						
42. South Dakota.....SD	N						
43. Tennessee.....TN	N						
44. Texas.....TX	N						
45. Utah.....UT	N						
46. Vermont.....VT	N						
47. Virginia.....VA	N						
48. Washington.....WA	N						
49. West Virginia.....WV	N						
50. Wisconsin.....WI	N						
51. Wyoming.....WY	N						
52. American Samoa.....AS	N						
53. Guam.....GU	N						
54. Puerto Rico.....PR	N						
55. US Virgin Islands.....VI	N						
56. Northern Mariana Islands.....MP	N						
57. Canada.....CAN	N						
58. Aggregate Other Alien.....OT	XXX	0	0	0	0	0	0
59. Totals.....	(a).....1	0	0	0	0	0	0

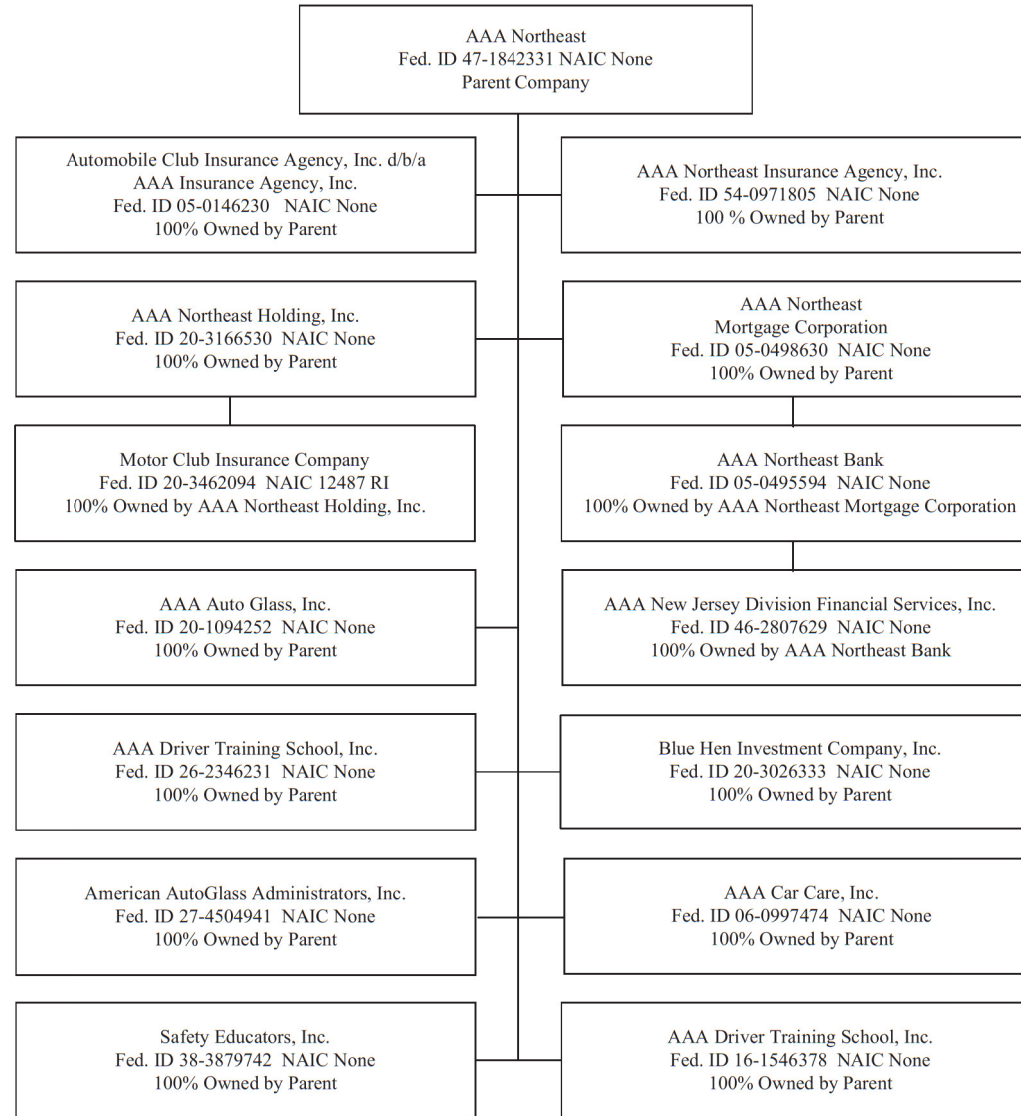
DETAILS OF WRITE-INS

58001.....	XXX						
58002.....	XXX						
58003.....	XXX						
58998. Summary of remaining write-ins for Line 58 from overflow page....	XXX	0	0	0	0	0	0
58999. Totals (Lines 58001 thru 58003+ Line 58998) (Line 58 above).....	XXX	0	0	0	0	0	0

(L) - Licensed or Chartered - Licensed Insurance Carrier or Domiciled RRG; (R) - Registered - Non-domiciled RRGs; (Q) - Qualified - Qualified or Accredited Reinsurer;
 (E) - Eligible - Reporting Entities eligible or approved to write Surplus Lines in the state (other than their state of domicile see DSLI); (D) - DSLI - Domestic Surplus Lines Insurer
 (DSL) - Reporting entities authorized to write Surplus Lines in the state of domicile; (N) - None of the above - Not allowed to write business in the state.
 (a) Insert the number of D and L responses except for Canada and Other Alien.

PART 1 – ORGANIZATIONAL CHART

Q11



SCHEDULE Y

PART 1A - DETAIL OF INSURANCE HOLDING COMPANY SYSTEM

1	2	3	4	5	6	7	8	9	10	11	12	13	14	15	16
Group Code	Group Name	NAIC Company Code	ID Number	Federal RSSD	CIK	Name of Securities Exchange if Publicly Traded (U.S. or International)	Names of Parent, Subsidiaries or Affiliates	Domiciliary Location	Relationship to Reporting Entity	Directly Controlled by (Name of Entity/Person)	Type of Control (Ownership Board, Management, Attorney-in-Fact, Influence, Other)	If Control is Ownership Provide Percentage	Ultimate Controlling Entity(ies)/Person(s)	Is an SCA Filing Required? (Y/N)	*
Members															
		00000..	47-1842331..				AAA Northeast.....	DE.....	UIP.....					N	
		00000..	05-0146230..				Automobile Club Insurance Agency, Inc. d/b/a AAA Insurance Agency, Inc.	RI.....	NIA.....	AAA Northeast.....	Ownership.....	100.000	AAA Northeast.....	N	
		00000..	54-0971805..				AAA Northeast Insurance Agency, Inc.....	MA.....	NIA.....	AAA Northeast.....	Ownership.....	100.000	AAA Northeast.....	N	
		00000..	20-3166530..				AAA Northeast Holding, Inc.....	RI.....	UDP.....	AAA Northeast.....	Ownership.....	100.000	AAA Northeast.....	N	
		00000..	05-0498630..				AAA Northeast Mortgage Corporation.....	RI.....	NIA.....	AAA Northeast.....	Ownership.....	100.000	AAA Northeast.....	N	
		12487..	20-3462094..				Motor Club Insurance Company.....	RI.....		AAA Northeast Holding, Inc.....	Ownership.....	100.000	AAA Northeast.....	N	
		00000..	05-0495594..				AAA Northeast Bank.....	RI.....	NIA.....	AAA Northeast Mortgage Corporation.....	Ownership.....	100.000	AAA Northeast.....	N	
		00000..	46-2807629..				AAA New Jersey Division Financial Services, Inc.	NJ.....	NIA.....	AAA Northeast Bank.....	Ownership.....	100.000	AAA Northeast.....	N	
		00000..	20-1094252..				AAA Auto Glass, Inc.....	RI.....	NIA.....	AAA Northeast.....	Ownership.....	100.000	AAA Northeast.....	N	
		00000..	20-3026333..				Blue Hen Investment Company, Inc.....	DE.....	NIA.....	AAA Northeast.....	Ownership.....	100.000	AAA Northeast.....	N	
		00000..	26-2346231..				AAA Driver Training School, Inc.....	MA.....	NIA.....	AAA Northeast.....	Ownership.....	100.000	AAA Northeast.....	N	
		00000..	27-4504941..				American AutoGlass Administrators, Inc.....	RI.....	NIA.....	AAA Northeast.....	Ownership.....	100.000	AAA Northeast.....	N	
		00000..	06-0997474..				AAA Car Care, Inc.....	CT.....	NIA.....	AAA Northeast.....	Ownership.....	100.000	AAA Northeast.....	N	
		00000..	38-3879742..				Safety Educators, Inc.....	RI.....	NIA.....	AAA Northeast.....	Ownership.....	100.000	AAA Northeast.....	N	
		00000..	16-1546378..				AAA Driver Training School, Inc.....	NY.....	NIA.....	AAA Northeast.....	Ownership.....	100.000	AAA Northeast.....	N	

Q12

PART 1 - LOSS EXPERIENCE

Lines of Business	Current Year to Date			4 Prior Year to Date Direct Loss Percentage
	1 Direct Premiums Earned	2 Direct Losses Incurred	3 Direct Loss Percentage	
1. Fire.....			0.000	
2. Allied lines.....			0.000	
3. Farmowners multiple peril.....			0.000	
4. Homeowners multiple peril.....			0.000	
5. Commercial multiple peril.....			0.000	
6. Mortgage guaranty.....			0.000	
8. Ocean marine.....			0.000	
9. Inland marine.....			0.000	
10. Financial guaranty.....			0.000	
11.1. Medical professional liability - occurrence.....			0.000	
11.2. Medical professional liability - claims-made.....			0.000	
12. Earthquake.....			0.000	
13. Group accident and health.....			0.000	
14. Credit accident and health.....			0.000	
15. Other accident and health.....			0.000	
16. Workers' compensation.....			0.000	
17.1. Other liability-occurrence.....			0.000	
17.2. Other liability-claims made.....			0.000	
17.3. Excess workers' compensation.....			0.000	
18.1. Products liability-occurrence.....			0.000	
18.2. Products liability-claims made.....			0.000	
19.1, 19.2. Private passenger auto liability.....			0.000	
19.3, 19.4. Commercial auto liability.....			0.000	
21. Auto physical damage.....			0.000	
22. Aircraft (all perils).....			0.000	
23. Fidelity.....			0.000	
24. Surety.....			0.000	
26. Burglary and theft.....			0.000	
27. Boiler and machinery.....			0.000	
28. Credit.....			0.000	
29. International.....			0.000	
30. Warranty.....			0.000	
31. Reinsurance-nonproportional assumed property.....	XXX	XXX	XXX	XXX
32. Reinsurance-nonproportional assumed liability.....	XXX	XXX	XXX	XXX
33. Reinsurance-nonproportional assumed financial lines.....	XXX	XXX	XXX	XXX
34. Aggregate write-ins for other lines of business.....	.0	.0	0.000	
35. Totals.....	.0	.0	0.000	
DETAILS OF WRITE-INS				
3401.....			0.000	
3402.....			0.000	
3403.....			0.000	
3498. Sum. of remaining write-ins for Line 34 from overflow page.....	.0	.0	0.000	XXX
3499. Totals (Lines 3401 thru 3403 plus 3498) (Line 34).....	.0	.0	0.000	

NONE

PART 2 - DIRECT PREMIUMS WRITTEN

Lines of Business	1	2	3
	Current Quarter	Current Year to Date	Prior Year Year to Date
1. Fire.....			
2. Allied lines.....			
3. Farmowners multiple peril.....			
4. Homeowners multiple peril.....			
5. Commercial multiple peril.....			
6. Mortgage guaranty.....			
8. Ocean marine.....			
9. Inland marine.....			
10. Financial guaranty.....			
11.1. Medical professional liability - occurrence.....			
11.2. Medical professional liability - claims made.....			
12. Earthquake.....			
13. Group accident and health.....			
14. Credit accident and health.....			
15. Other accident and health.....			
16. Workers' compensation.....			
17.1. Other liability-occurrence.....			
17.2. Other liability-claims made.....			
17.3. Excess workers' compensation.....			
18.1. Products liability-occurrence.....			
18.2. Products liability-claims made.....			
19.1 19.2. Private passenger auto liability.....			
19.3 19.4. Commercial auto liability.....			
21. Auto physical damage.....			
22. Aircraft (all perils).....			
23. Fidelity.....			
24. Surety.....			
26. Burglary and theft.....			
27. Boiler and machinery.....			
28. Credit.....			
29. International.....			
30. Warranty.....			
31. Reinsurance-nonproportional assumed property.....	XXX	XXX	XXX
32. Reinsurance-nonproportional assumed liability.....	XXX	XXX	XXX
33. Reinsurance-nonproportional assumed financial lines.....	XXX	XXX	XXX
34. Aggregate write-ins for other lines of business.....	.0	.0	.0
35. Totals.....	.0	.0	.0
DETAILS OF WRITE-INS			
3401.....			
3402.....			
3403.....			
3498. Sum. of remaining write-ins for Line 34 from overflow page.....	.0	.0	.0
3499. Totals (Lines 3401 thru 3403 plus 3498) (Line 34).....	.0	.0	.0

NONE

PART 3 (000 omitted)

LOSS AND LOSS ADJUSTMENT EXPENSE RESERVES SCHEDULE

	1	2	3	4	5	6	7	8	9	10	11	12	13
Years in Which Losses Occurred	Prior Year-End Known Case Loss and LAE Reserves	Prior Year-End IBNR Loss and LAE Reserves	Total Prior Year-End Loss and LAE Reserves (Cols. 1 + 2)	2017 Loss and LAE Payments on Claims Reported as of Prior Year-End	2017 Loss and LAE Payments on Claims Unreported as of Prior Year-End	Total 2017 Loss and LAE Payments (Cols. 4 + 5)	Q.S. Date Known Case Loss and LAE Reserves on Claims Reported and Open as of Prior Year-End	Q.S. Date Known Case Loss and LAE Reserves on Claims Reported or Reopened Subsequent to Prior Year-End	Q.S. Date IBNR Loss and LAE Reserves	Total Q.S. Loss and LAE Reserves (Cols. 7 + 8 + 9)	Prior Year-End Known Case Loss and LAE Reserves Developed (Savings)/Deficiency (Cols. 4 + 7 minus Col. 1)	Prior Year-End IBNR Loss and LAE Reserves Developed (Savings)/Deficiency (Cols. 5 + 8 + 9 minus Col. 2)	Prior Year-End Total Loss and LAE Reserve Developed (Savings)/Deficiency (Cols. 11 + 12)
1. 2014 + Prior.....			.0			.0				.0	.0	.0	.0
2. 2015.....		2	2			.0			1	.1	.0	(1)	(1)
3. Subtotals 2015 + Prior.....	.0	2	2	.0	.0	.0	.0	.0	1	.1	.0	(1)	(1)
4. 2016.....		192	192		118	118			52	52	.0	(22)	(22)
5. Subtotals 2016 + Prior.....	.0	194	194	.0	118	118	.0	.0	53	53	.0	(23)	(23)
6. 2017.....	XXX	XXX	XXX	XXX	37	37	XXX		182	182	XXX	XXX	XXX
7. Totals.....	.0	194	194	.0	155	155	.0	.0	235	235	.0	(23)	(23)
8. Prior Year-End's Surplus As Regards Policyholders.....	46,928												
											Col. 11, Line 7 As % of Col. 1, Line 7	Col. 12, Line 7 As % of Col. 2, Line 7	Col. 13, Line 7 As % of Col. 3, Line 7
											1.0.000%	2.(11.856)%	3.(11.856)%
													Col. 13, Line 7 Line 8
													4.(0.049)%

Q14

SUPPLEMENTAL EXHIBITS AND SCHEDULES INTERROGATORIES

The following supplemental reports are required to be filed as part of your statement filing. However, in the event that your company does not transact the type of business for which the special report must be filed, your response of NO to the specific interrogatory will be accepted in lieu of filing a "NONE" report and a bar code will be printed below. If the supplement is required of your company but is not being filed for whatever reason, enter SEE EXPLANATION and provide an explanation following the interrogatory questions.

	Response
1. Will the Trusteed Surplus Statement be filed with the state of domicile and the NAIC with this statement?	NO
2. Will Supplement A to Schedule T (Medical Professional Liability Supplement) be filed with this statement?	NO
3. Will the Medicare Part D Coverage Supplement be filed with the state of domicile and the NAIC with this statement?	NO
4. Will the Director and Officer Insurance Coverage Supplement be filed with the state of domicile and the NAIC with this statement?	NO

Explanation:

1. The data for this supplement is not required to be filed.
2. The data for this supplement is not required to be filed.
3. The data for this supplement is not required to be filed.
4. The data for this supplement is not required to be filed.

Bar Code:



NONE

Motor Club Insurance Company
SCHEDULE A - VERIFICATION

Real Estate

	1 Year to Date	2 Prior Year Ended December 31
1. Book/adjusted carrying value, December 31 of prior year.....	0	
2. Cost of acquired:		
2.1 Actual cost at time of acquisition.....		
2.2 Additional investment made after acquisition.....		
3. Current year change in encumbrances.....		
4. Total gain (loss) on disposals.....		
5. Deduct amounts received on disposals.....		
6. Total foreign exchange change in book/adjusted carrying value.....		
7. Deduct current year's other-than-temporary impairment recognized.....		
8. Deduct current year's depreciation.....		
9. Book/adjusted carrying value at end of current period (Lines 1+2+3+4-5+6-7-8).....	0	0
10. Deduct total nonadmitted amounts.....		
11. Statement value at end of current period (Line 9 minus Line 10).....	0	0

NONE

SCHEDULE B - VERIFICATION

Mortgage Loans

	1 Year to Date	2 Prior Year Ended December 31
1. Book value/recorded investment excluding accrued interest, December 31 of prior year.....	0	
2. Cost of acquired:		
2.1 Actual cost at time of acquisition.....		
2.2 Additional investment made after acquisition.....		
3. Capitalized deferred interest and other.....		
4. Accrual of discount.....		
5. Unrealized valuation increase (decrease).....		
6. Total gain (loss) on disposals.....		
7. Deduct amounts received on disposals.....		
8. Deduct amortization of premium and mortgage interest points and commitment fees.....		
9. Total foreign exchange change in book value/recorded investment excluding accrued interest.....		
10. Deduct current year's other-than-temporary impairment recognized.....		
11. Book value/recorded investment excluding accrued interest at end of current period (Lines 1+2+3+4+5+6-7-8+9-10).....	0	0
12. Total valuation allowance.....		
13. Subtotal (Line 11 plus Line 12).....	0	0
14. Deduct total nonadmitted amounts.....		
15. Statement value at end of current period (Line 13 minus Line 14).....	0	0

NONE

SCHEDULE BA - VERIFICATION

Other Long-Term Invested Assets

	1 Year to Date	2 Prior Year Ended December 31
1. Book/adjusted carrying value, December 31 of prior year.....	2,662,028	2,410,492
2. Cost of acquired:		
2.1 Actual cost at time of acquisition.....		
2.2 Additional investment made after acquisition.....		
3. Capitalized deferred interest and other.....		
4. Accrual of discount.....		
5. Unrealized valuation increase (decrease).....	203,921	251,536
6. Total gain (loss) on disposals.....		
7. Deduct amounts received on disposals.....		
8. Deduct amortization of premium and depreciation.....		
9. Total foreign exchange change in book/adjusted carrying value.....		
10. Deduct current year's other-than-temporary impairment recognized.....		
11. Book/adjusted carrying value at end of current period (Lines 1+2+3+4+5+6-7-8+9-10).....	2,865,949	2,662,028
12. Deduct total nonadmitted amounts.....		
13. Statement value at end of current period (Line 11 minus Line 12).....	2,865,949	2,662,028

SCHEDULE D - VERIFICATION

Bonds and Stocks

	1 Year to Date	2 Prior Year Ended December 31
1. Book/adjusted carrying value of bonds and stocks, December 31 of prior year.....	44,311,011	42,062,912
2. Cost of bonds and stocks acquired.....	2,409,261	7,015,130
3. Accrual of discount.....	6,413	26,932
4. Unrealized valuation increase (decrease).....	1,363,323	1,389,281
5. Total gain (loss) on disposals.....	(1,270)	238,286
6. Deduct consideration for bonds and stocks disposed of.....	2,078,117	5,838,503
7. Deduct amortization of premium.....	142,797	583,027
8. Total foreign exchange change in book/adjusted carrying value.....		
9. Deduct current year's other-than-temporary impairment recognized.....		
10. Book/adjusted carrying value at end of current period (Lines 1+2+3+4+5-6-7+8-9).....	45,867,824	44,311,011
11. Deduct total nonadmitted amounts.....		
12. Statement value at end of current period (Line 10 minus Line 11).....	45,867,824	44,311,011

SCHEDULE D - PART 1B

Showing the Acquisitions, Dispositions and Non-Trading Activity

During the Current Quarter for all Bonds and Preferred Stock by NAIC Designation

NAIC Designation	1 Book/Adjusted Carrying Value Beginning of Current Quarter	2 Acquisitions During Current Quarter	3 Dispositions During Current Quarter	4 Non-Trading Activity During Current Quarter	5 Book/Adjusted Carrying Value End of First Quarter	6 Book/Adjusted Carrying Value End of Second Quarter	7 Book/Adjusted Carrying Value End of Third Quarter	8 Book/Adjusted Carrying Value December 31 Prior Year
BONDS								
1. NAIC 1 (a).....	21,999,664	4,173,932	3,960,993	(137,239)	22,075,364			21,999,664
2. NAIC 2 (a).....	818,739			.853	819,593			818,739
3. NAIC 3 (a).....					.0			
4. NAIC 4 (a).....					.0			
5. NAIC 5 (a).....					.0			
6. NAIC 6 (a).....					.0			
7. Total Bonds.....	22,818,404	4,173,932	3,960,993	(136,386)	22,894,957	0	0	22,818,404
PREFERRED STOCK								
8. NAIC 1.....					.0			
9. NAIC 2.....					.0			
10. NAIC 3.....					.0			
11. NAIC 4.....					.0			
12. NAIC 5.....					.0			
13. NAIC 6.....					.0			
14. Total Preferred Stock.....	0	0	0	0	0	0	0	0
15. Total Bonds and Preferred Stock.....	22,818,404	4,173,932	3,960,993	(136,386)	22,894,957	0	0	22,818,404

QS102

(a) Book/Adjusted Carrying Value column for the end of the current reporting period includes the following amount of short-term and cash equivalent bonds by NAIC designation:

NAIC 1 \$.....178,883; NAIC 2 \$.....0; NAIC 3 \$.....0; NAIC 4 \$.....0; NAIC 5 \$.....0; NAIC 6 \$.....0.

SCHEDULE DA - PART 1

Short-Term Investments

	1 Book/Adjusted Carrying Value	2 Par Value	3 Actual Cost	4 Interest Collected Year To Date	5 Paid for Accrued Interest Year To Date
9199999.....	178,883	XXX	178,883	333	

SCHEDULE DA - VERIFICATION

Short-Term Investments

	1 Year To Date	2 Prior Year Ended December 31
1. Book/adjusted carrying value, December 31 of prior year.....	263,654	333,440
2. Cost of short-term investments acquired.....	1,851,835	5,204,960
3. Accrual of discount.....		
4. Unrealized valuation increase (decrease).....		
5. Total gain (loss) on disposals.....		
6. Deduct consideration received on disposals.....	1,936,606	5,274,746
7. Deduct amortization of premium.....		
8. Total foreign exchange change in book/adjusted carrying value.....		
9. Deduct current year's other-than-temporary impairment recognized.....		
10. Book/adjusted carrying value at end of current period (Lines 1+2+3+4+5-6-7+8-9).....	178,883	263,654
11. Deduct total nonadmitted amounts.....		
12. Statement value at end of current period (Line 10 minus Line 11).....	178,883	263,654

**Sch. DB - Pt. A - Verification
NONE**

**Sch. DB - Pt. B - Verification
NONE**

**Sch. DB - Pt. C - Sn. 1
NONE**

**Sch. DB - Pt. C - Sn. 2
NONE**

**Sch. DB - Verification
NONE**

**Sch. E - Verification
NONE**

**Sch. A - Pt. 2
NONE**

**Sch. A - Pt. 3
NONE**

**Sch. B - Pt. 2
NONE**

**Sch. B - Pt. 3
NONE**

**Sch. BA - Pt. 2
NONE**

**Sch. BA - Pt. 3
NONE**

SCHEDULE D - PART 3

Showing all Long-Term Bonds and Stocks ACQUIRED During Current Quarter

1	2	3	4	5	6	7	8	9	10
CUSIP Identification	Description	Foreign	Date Acquired	Name of Vendor	Number of Shares of Stock	Actual Cost	Par Value	Paid for Accrued Interest and Dividends	NAIC Designation or Market Indicator (a)
Bonds - U.S. States, Territories and Possessions									
13063C 5A 4	CALIFORNIA ST.....		03/08/2017.....	CITIGROUP GLOBAL MARKETS INC.....		181,404	155,000		1FE.....
419791 T6 5	HAWAII ST.....		03/16/2017.....	BARCLAYS BANK.....		236,132	210,000	4,083	1FE.....
1799999	Total - Bonds - U.S. States, Territories & Possessions.....					417,537	365,000	4,083	XXX.....
Bonds - U.S. Political Subdivisions of States									
01728V SJ 0	ALLEGHENY CNTY PA.....		01/19/2017.....	JANNEY MONTGOMERY, SCOTT INC.....		179,019	150,000	1,729	1FE.....
249002 BA 3	DENTON TEX INDPT SCH DIST.....		03/22/2017.....	U.S. BANK/MUNICIPAL.....		181,805	180,000	560	1FE.....
597851 3Y 8	MIDLOTHIAN TEX INDPT SCH DIST.....		03/08/2017.....	SWS GROUP.....		203,300	200,000		1FE.....
844215 QP 1	SOUTHFIELD MICH PUB SCHS.....		01/13/2017.....	JP MORGAN SECURITIES LLC.....		433,922	385,000		1FE.....
2499999	Total - Bonds - U.S. Political Subdivisions of States.....					998,046	915,000	2,289	XXX.....
Bonds - U.S. Special Revenue and Special Assessment									
407287 MK 4	HAMILTON CNTY OHIO SALES TAX.....		01/09/2017.....	BB&T SECURITIES, LLC.....		395,024	360,000	2,050	1FE.....
57563R NL 9	MASSACHUSETTS EDL FING AUTH.....		01/09/2017.....	RBC CAPITAL MARKETS, LLC.....		106,347	95,000	145	1FE.....
59261A HV 2	METROPOLITAN TRANSN AUTH N Y REV.....		02/15/2017.....	MORGAN STANLEY & CO LLC.....		405,143	370,000	4,933	1FE.....
3199999	Total - Bonds - U.S. Special Revenue and Special Assessments.....					906,514	825,000	7,128	XXX.....
8399997	Total - Bonds - Part 3.....					2,322,097	2,105,000	13,501	XXX.....
8399999	Total - Bonds.....					2,322,097	2,105,000	13,501	XXX.....
Common Stocks - Mutual Funds									
922908 80 1	VANGUARD INDEX FDS TTLSTK MKT-INST.....		03/23/2017.....	STATE STREET BANK AND TRUST.....		804,703	47,083	XXX	L.....
9299999	Total - Common Stocks - Mutual Funds.....						47,083	XXX	0.....XXX.....
Common Stocks - Money Market Mutual Funds									
000000 00 0	SANTANDER MMF.....		03/31/2017.....	SANTANDER.....		40,081.120	40,081	XXX	V.....
9399999	Total - Common Stocks - Money Market Mutual Funds.....						40,081	XXX	0.....XXX.....
9799997	Total - Common Stocks - Part 3.....						87,164	XXX	0.....XXX.....
9799999	Total - Common Stocks.....						87,164	XXX	0.....XXX.....
9899999	Total - Preferred and Common Stocks.....						87,164	XXX	0.....XXX.....
9999999	Total - Bonds, Preferred and Common Stocks.....						2,409,261	XXX	13,501.....XXX.....

(a) For all common stock bearing NAIC market indicator "U" provide the number of such issues:.....0.

QE04

SCHEDULE D - PART 4

Showing all Long-Term Bonds and Stocks SOLD, REDEEMED or Otherwise DISPOSED OF During Current Quarter

1	2	3	4	5	6	7	8	9	10	Change in Book/Adjusted Carrying Value					16	17	18	19	20	21	22
										11	12	13	14	15							
CUSIP Identification	Description	F o r e i g n	Disposal Date	Name of Purchaser	Number of Shares of Stock	Consideration	Par Value	Actual Cost	Prior Year Book/Adjusted Carrying Value	Unrealized Valuation Increase (Decrease)	Current Year's (Amortization) / Accretion	Current Year's Other-Than-Temporary Impairment Recognized	Total Change in B./A.C.V. (11+12-13)	Total Foreign Exchange Change in B./A.C.V.	Book/Adjusted Carrying Value at Disposal Date	Foreign Exchange Gain (Loss) on Disposal	Realized Gain (Loss) on Disposal	Total Gain (Loss) on Disposal	Bond Interest / Stock Dividends Received During Year	Stated Contractual Maturity Date	NAIC Designation or Market Indicator (a)
Bonds - U.S. Political Subdivisions of States																					
526030	V8 1		03/10/2017	LENEXA KANS.....		52,790	50,000	55,407	53,294		(399)		(399)		52,899		(109)	(109)	1,347	09/01/2018	1FE.....
962506	QS 3		01/17/2017	WHATCOM CNTY WASH SCH DIST NO.....		406,896	400,000	416,928	407,800		(444)		(444)		407,356		(460)	(460)	1,633	12/01/2017	1FE.....
2499999	Total - Bonds - U.S. Political Subdivisions of States.....					459,686	450,000	472,335	461,094	0	(843)	0	(843)	0	460,255	0	(569)	(569)	2,981	XXX	XXX
Bonds - U.S. Special Revenue and Special Assessment																					
072024	TL 6		02/23/2017	BAY AREA TOLL AUTH CALIF TOLL REV ..		100,000	100,000	100,360	100,000				0		100,000			0	394	04/01/2047	1FE.....
19648A	SY 2		03/17/2017	COLORADO HEALTH FACS AUTH REV.....		267,973	260,000	292,713	270,535		(2,092)		(2,092)		268,444		(471)	(471)	9,124	01/01/2018	1FE.....
403715	CE 3		03/14/2017	GWINNETT CNTY GA DEV AUTH CTFS PARTN		51,698	50,000	60,334	51,814		(363)		(363)		51,454		244	244	1,845	01/01/2018	1FE.....
546850	AU 2		01/10/2017	LOUISVILLE KY REGL ARPT AUTH ARPT SYS RE		50,947	50,000	55,030	51,104		(72)		(72)		51,037		(91)	(91)	1,393	07/01/2017	1FE.....
57563R	NJ 4		01/09/2017	MASSACHUSETTS EDL FING AUTH.....		105,073	95,000	108,068	106,978		(62)		(62)		106,916		(1,843)	(1,843)	2,718	07/01/2022	1FE.....
59447P	7C 9		02/16/2017	MICHIGAN FIN AUTH REV.....		345,569	335,000	373,183	347,565		(1,769)		(1,769)		345,796		(227)	(227)	3,536	12/01/2017	1FE.....
59465H	PJ 9		03/15/2017	MICHIGAN ST HOSP FIN AUTH REV.....		250,000	250,000	250,588	250,093		(93)		(93)		250,000			0	1,250	11/15/2047	1FE.....
724500	JY 0		01/10/2017	PITT CNTY N C CTFS PARTN.....		136,168	135,000	148,059	136,604		(196)		(196)		136,408		(240)	(240)	1,894	04/01/2019	1FE.....
914713	J3 7		02/17/2017	UNIVERSITY NC CHAPEL HILL REV.....		175,121	175,000	175,000	175,000				0		175,000		121	121	462	12/01/2041	1FE.....
914729	LH 9		01/23/2017	UNIVERSITY NORTH TEX UNIV REV.....		80,884	75,000	87,950	79,190		(115)		(115)		79,077		1,807	1,807	1,031	04/15/2019	1FE.....
3199999	Total - Bonds - U.S. Special Revenue and Special Assessments.....					1,563,432	1,525,000	1,651,284	1,568,883	0	(4,762)	0	(4,762)	0	1,564,132	0	(701)	(701)	23,646	XXX	XXX
8399997	Total - Bonds - Part 4.....					2,023,117	1,975,000	2,123,619	2,029,977	0	(5,605)	0	(5,605)	0	2,024,387	0	(1,270)	(1,270)	26,627	XXX	XXX
8399999	Total - Bonds.....					2,023,117	1,975,000	2,123,619	2,029,977	0	(5,605)	0	(5,605)	0	2,024,387	0	(1,270)	(1,270)	26,627	XXX	XXX
Common Stocks - Money Market Mutual Funds																					
000000	00 0		01/31/2017	SANTANDER MMF.....		55,000.000	55,000	55,000	54,983				0		55,000			0	17	XXX	V.....
9399999	Total - Common Stocks - Money Market Mutual Funds.....					55,000	55,000	55,000	54,983	0	0	0	0	0	55,000	0	0	0	17	XXX	XXX
9799997	Total - Common Stocks - Part 4.....					55,000	55,000	55,000	54,983	0	0	0	0	0	55,000	0	0	0	17	XXX	XXX
9799999	Total - Common Stocks.....					55,000	55,000	55,000	54,983	0	0	0	0	0	55,000	0	0	0	17	XXX	XXX
9899999	Total - Preferred and Common Stocks.....					55,000	55,000	55,000	54,983	0	0	0	0	0	55,000	0	0	0	17	XXX	XXX
9999999	Total - Bonds, Preferred and Common Stocks.....					2,078,117	1,975,000	2,178,619	2,084,960	0	(5,605)	0	(5,605)	0	2,079,387	0	(1,270)	(1,270)	26,644	XXX	XXX

QE05

(a) For all common stock bearing the NAIC market indicator "U" provide: the number of such issues:0.

Sch. DB - Pt. A - Sn. 1
NONE

Sch. DB - Pt. B - Sn. 1
NONE

Sch. DB - Pt. D - Sn. 1
NONE

Sch. DB - Pt. D - Sn. 2
NONE

Sch. DL - Pt. 1
NONE

Sch. DL - Pt. 2
NONE

SCHEDULE E - PART 1 - CASH

Month End Depository Balances

1 Depository	2 Code	3 Rate of Interest	4 Amount of Interest Received During Current Quarter	5 Amount of Interest Accrued at Current Statement Date	Book Balance at End of Each Month During Current Quarter			9 *
					6 First Month	7 Second Month	8 Third Month	
Open Depositories								
SANTANDER BANK..... PROVIDENCE, RI.....		0068,27167,73326,058	XXX
0199999. Total Open Depositories.....	XXX	XXX0068,27167,73326,058	XXX
0399999. Total Cash on Deposit.....	XXX	XXX0068,27167,73326,058	XXX
0599999. Total Cash.....	XXX	XXX0068,27167,73326,058	XXX

SCHEDULE E - PART 2 - CASH EQUIVALENTS

Show Investments Owned End of Current Quarter

1 Description	2 Code	3 Date Acquired	4 Rate of Interest	5 Maturity Date	6 Book/Adjusted Carrying Value	7 Amount of Interest Due & Accrued	8 Amount Received During Year
------------------	-----------	--------------------	-----------------------	--------------------	-----------------------------------	---------------------------------------	----------------------------------

NONE

QE13