



# ANNUAL STATEMENT

For the Year Ended December 31, 2017

of the Condition and Affairs of the

## ProTucket Insurance Company

NAIC Group Code..... 0, 0 <small>(Current Period) (Prior Period)</small>	NAIC Company Code..... 16125	Employer's ID Number..... 81-5375941
Organized under the Laws of RH	State of Domicile or Port of Entry RH	Country of Domicile US
Incorporated/Organized..... February 24, 2017	Commenced Business..... March 15, 2017	
Statutory Home Office	521 Fifth Avenue, Suite 630..... New York ..... NY ..... US ..... 10175 <small>(Street and Number) (City or Town, State, Country and Zip Code)</small>	
Main Administrative Office	3501 Concord Road, Suite 120..... York ..... PA ..... US..... 17402 <small>(Street and Number) (City or Town, State, Country and Zip Code)</small>	717-840-2402 <small>(Area Code) (Telephone Number)</small>
Mail Address	3501 Concord Road, Suite 120 PO Box 3709..... York ..... PA ..... US ..... 17402-0609 <small>(Street and Number or P. O. Box) (City or Town, State, Country and Zip Code)</small>	
Primary Location of Books and Records	3501 Concord Road, Suite 120..... York ..... PA ..... US ..... 17402 <small>(Street and Number) (City or Town, State, Country and Zip Code)</small>	717-840-2402 <small>(Area Code) (Telephone Number)</small>
Internet Web Site Address	N/A	
Statutory Statement Contact	Karen Elizabeth Burmeister <small>(Name)</small> Karen.Burmeister@Pro-Global.com <small>(E-Mail Address)</small>	717-757-0000 x6226 <small>(Area Code) (Telephone Number) (Extension)</small>  <small>(Fax Number)</small>

### OFFICERS

Name	Title	Name	Title
1. Mory Katz	President & CEO	2. Andrew James Donnelly	Vice President & Treasurer
3. Albert Bernard Miller	Secretary	4.	

### OTHER

Richard Frederick Lawson	Vice President	Marvin David Mohn	Vice President
--------------------------	----------------	-------------------	----------------

### DIRECTORS OR TRUSTEES

Artur Pawel Niemczewski	Richard Frederick Lawson	Susan Lee	Marvin David Mohn
Mory Katz			

State of..... Rhode Island  
County of.....

The officers of this reporting entity being duly sworn, each depose and say that they are the described officers of said reporting entity, and that on the reporting period stated above, all of the herein described assets were the absolute property of the said reporting entity, free and clear from any liens or claims thereon, except as herein stated, and that this statement, together with related exhibits, schedules and explanations therein contained, annexed or referred to, is a full and true statement of all the assets and liabilities and of the condition and affairs of the said reporting entity as of the reporting period stated above, and of its income and deductions therefrom for the period ended, and have been completed in accordance with the NAIC *Annual Statement Instructions and Accounting Practices and Procedures* manual except to the extent that: (1) state law may differ; or, (2) that state rules or regulations require differences in reporting not related to accounting practices and procedures, according to the best of their information, knowledge and belief, respectively. Furthermore, the scope of this attestation by the described officers also includes the related corresponding electronic filing with the NAIC, when required, that is an exact copy (except for formatting differences due to electronic filing) of the enclosed statement. The electronic filing may be requested by various regulators in lieu of or in addition to the enclosed statement.

_____ (Signature) Mory Katz	_____ (Signature) Andrew James Donnelly	_____ (Signature) Albert Bernard Miller
1. (Printed Name) President & CEO	2. (Printed Name) Vice President & Treasurer	3. (Printed Name) Secretary
_____ (Title)	_____ (Title)	_____ (Title)

Subscribed and sworn to before me  
This \_\_\_\_\_ day of \_\_\_\_\_ 2018

a. Is this an original filing? Yes [ X ] No [ ]  
b. If no  
1. State the amendment number \_\_\_\_\_  
2. Date filed \_\_\_\_\_  
3. Number of pages attached \_\_\_\_\_

## ASSETS

	Current Year			Prior Year
	1 Assets	2 Nonadmitted Assets	3 Net Admitted Assets (Cols. 1 - 2)	4 Net Admitted Assets
1. Bonds (Schedule D).....			.0	
2. Stocks (Schedule D):				
2.1 Preferred stocks.....			.0	
2.2 Common stocks.....			.0	
3. Mortgage loans on real estate (Schedule B):				
3.1 First liens.....			.0	
3.2 Other than first liens.....			.0	
4. Real estate (Schedule A):				
4.1 Properties occupied by the company (less \$.....0 encumbrances).....			.0	
4.2 Properties held for the production of income (less \$.....0 encumbrances).....			.0	
4.3 Properties held for sale (less \$.....0 encumbrances).....			.0	
5. Cash (\$.....3,029,350, Schedule E-Part 1), cash equivalents (\$.....0, Schedule E-Part 2) and short-term investments (\$.....0, Schedule DA).....	3,029,350		3,029,350	
6. Contract loans (including \$.....0 premium notes).....			.0	
7. Derivatives (Schedule DB).....			.0	
8. Other invested assets (Schedule BA).....			.0	
9. Receivables for securities.....			.0	
10. Securities lending reinvested collateral assets (Schedule DL).....			.0	
11. Aggregate write-ins for invested assets.....	.0	.0	.0	.0
12. Subtotals, cash and invested assets (Lines 1 to 11).....	3,029,350	.0	3,029,350	.0
13. Title plants less \$.....0 charged off (for Title insurers only).....			.0	
14. Investment income due and accrued.....			.0	
15. Premiums and considerations:				
15.1 Uncollected premiums and agents' balances in the course of collection.....			.0	
15.2 Deferred premiums, agents' balances and installments booked but deferred and not yet due (including \$.....0 earned but unbilled premiums).....			.0	
15.3 Accrued retrospective premiums (\$.....0) and contracts subject to redetermination (\$.....0).....			.0	
16. Reinsurance:				
16.1 Amounts recoverable from reinsurers.....			.0	
16.2 Funds held by or deposited with reinsured companies.....			.0	
16.3 Other amounts receivable under reinsurance contracts.....			.0	
17. Amounts receivable relating to uninsured plans.....			.0	
18.1 Current federal and foreign income tax recoverable and interest thereon.....			.0	
18.2 Net deferred tax asset.....			.0	
19. Guaranty funds receivable or on deposit.....			.0	
20. Electronic data processing equipment and software.....			.0	
21. Furniture and equipment, including health care delivery assets (\$.....0).....			.0	
22. Net adjustment in assets and liabilities due to foreign exchange rates.....			.0	
23. Receivables from parent, subsidiaries and affiliates.....			.0	
24. Health care (\$.....0) and other amounts receivable.....			.0	
25. Aggregate write-ins for other-than-invested assets.....	.0	.0	.0	.0
26. Total assets excluding Separate Accounts, Segregated Accounts and Protected Cell Accounts (Lines 12 to 25).....	3,029,350	.0	3,029,350	.0
27. From Separate Accounts, Segregated Accounts and Protected Cell Accounts.....			.0	
28. TOTAL (Lines 26 and 27).....	3,029,350	.0	3,029,350	.0

### DETAILS OF WRITE-INS

1101.....			.0	
1102.....			.0	
1103.....			.0	
1198. Summary of remaining write-ins for Line 11 from overflow page.....	.0	.0	.0	.0
1199. Totals (Lines 1101 through 1103 plus 1198) (Line 11 above).....	.0	.0	.0	.0
2501.....			.0	
2502.....			.0	
2503.....			.0	
2598. Summary of remaining write-ins for Line 25 from overflow page.....	.0	.0	.0	.0
2599. Totals (Lines 2501 through 2503 plus 2598) (Line 25 above).....	.0	.0	.0	.0

## LIABILITIES, SURPLUS AND OTHER FUNDS

	1 Current Year	2 Prior Year
1. Losses (Part 2A, Line 35, Column 8).....		
2. Reinsurance payable on paid losses and loss adjustment expenses (Schedule F, Part 1, Column 6).....		
3. Loss adjustment expenses (Part 2A, Line 35, Column 9).....		
4. Commissions payable, contingent commissions and other similar charges.....		
5. Other expenses (excluding taxes, licenses and fees).....	21,360	
6. Taxes, licenses and fees (excluding federal and foreign income taxes).....		
7.1 Current federal and foreign income taxes (including \$.....0 on realized capital gains (losses)).....	2,036	
7.2 Net deferred tax liability.....		
8. Borrowed money \$.....0 and interest thereon \$.....0.....		
9. Unearned premiums (Part 1A, Line 38, Column 5) (after deducting unearned premiums for ceded reinsurance of \$.....0 and including warranty reserves of \$.....0 and accrued accident and health experience rating refunds including \$.....0 for medical loss ratio rebate per the Public Health Service Act).....		
10. Advance premium.....		
11. Dividends declared and unpaid:		
11.1 Stockholders.....		
11.2 Policyholders.....		
12. Ceded reinsurance premiums payable (net of ceding commissions).....		
13. Funds held by company under reinsurance treaties (Schedule F, Part 3, Column 19).....		
14. Amounts withheld or retained by company for account of others.....		
15. Remittances and items not allocated.....		
16. Provision for reinsurance (including \$.....0 certified) (Schedule F, Part 8).....		
17. Net adjustments in assets and liabilities due to foreign exchange rates.....		
18. Drafts outstanding.....		
19. Payable to parent, subsidiaries and affiliates.....		
20. Derivatives.....		
21. Payable for securities.....		
22. Payable for securities lending.....		
23. Liability for amounts held under uninsured plans.....		
24. Capital notes \$.....0 and interest thereon \$.....0.....		
25. Aggregate write-ins for liabilities.....	0	0
26. Total liabilities excluding protected cell liabilities (Lines 1 through 25).....	23,396	0
27. Protected cell liabilities.....		
28. Total liabilities (Lines 26 and 27).....	23,396	0
29. Aggregate write-ins for special surplus funds.....	0	0
30. Common capital stock.....	1,000,000	
31. Preferred capital stock.....		
32. Aggregate write-ins for other-than-special surplus funds.....	0	0
33. Surplus notes.....		
34. Gross paid in and contributed surplus.....	2,002,000	
35. Unassigned funds (surplus).....	3,954	
36. Less treasury stock, at cost:		
36.1 .....0.000 shares common (value included in Line 30 \$.....0).....		
36.2 .....0.000 shares preferred (value included in Line 31 \$.....0).....		
37. Surplus as regards policyholders (Lines 29 to 35, less 36) (Page 4, Line 39).....	3,005,954	0
38. TOTAL (Page 2, Line 28, Col. 3).....	3,029,350	0

### DETAILS OF WRITE-INS

2501. ....		
2502. ....		
2503. ....		
2598. Summary of remaining write-ins for Line 25 from overflow page.....	0	0
2599. Totals (Lines 2501 through 2503 plus 2598) (Line 25 above).....	0	0
2901. ....		
2902. ....		
2903. ....		
2998. Summary of remaining write-ins for Line 29 from overflow page.....	0	0
2999. Totals (Lines 2901 through 2903 plus 2998) (Line 29 above).....	0	0
3201. ....		
3202. ....		
3203. ....		
3298. Summary of remaining write-ins for Line 32 from overflow page.....	0	0
3299. Totals (Lines 3201 through 3203 plus 3298) (Line 32 above).....	0	0

## STATEMENT OF INCOME

	1 Current Year	2 Prior Year
<b>UNDERWRITING INCOME</b>		
1. Premiums earned (Part 1, Line 35, Column 4).....		
DEDUCTIONS:		
2. Losses incurred (Part 2, Line 35, Column 7).....		
3. Loss adjustment expenses incurred (Part 3, Line 25, Column 1).....		
4. Other underwriting expenses incurred (Part 3, Line 25, Column 2).....	21,075	
5. Aggregate write-ins for underwriting deductions.....	0	0
6. Total underwriting deductions (Lines 2 through 5).....	21,075	0
7. Net income of protected cells.....		
8. Net underwriting gain (loss) (Line 1 minus Line 6 plus Line 7).....	(21,075)	0
<b>INVESTMENT INCOME</b>		
9. Net investment income earned (Exhibit of Net Investment Income, Line 17).....	27,065	
10. Net realized capital gains (losses) less capital gains tax of \$.....0 (Exhibit of Capital Gains (Losses)).....		
11. Net investment gain (loss) (Lines 9 + 10).....	27,065	0
<b>OTHER INCOME</b>		
12. Net gain (loss) from agents' or premium balances charged off (amount recovered \$.....0 amount charged off \$.....0).....	0	
13. Finance and service charges not included in premiums.....		
14. Aggregate write-ins for miscellaneous income.....	0	0
15. Total other income (Lines 12 through 14).....	0	0
16. Net income before dividends to policyholders, after capital gains tax and before all other federal and foreign income taxes (Lines 8 + 11 + 15).....	5,990	0
17. Dividends to policyholders.....		
18. Net income, after dividends to policyholders, after capital gains tax and before all other federal and foreign income taxes (Line 16 minus Line 17).....	5,990	0
19. Federal and foreign income taxes incurred.....	2,036	
20. Net income (Line 18 minus Line 19) (to Line 22).....	3,954	0
<b>CAPITAL AND SURPLUS ACCOUNT</b>		
21. Surplus as regards policyholders, December 31 prior year (Page 4, Line 39, Column 2).....	0	
22. Net income (from Line 20).....	3,954	0
23. Net transfers (to) from Protected Cell accounts.....		
24. Change in net unrealized capital gains or (losses) less capital gains tax of \$.....0.....		
25. Change in net unrealized foreign exchange capital gain (loss).....		
26. Change in net deferred income tax.....		
27. Change in nonadmitted assets (Exhibit of Nonadmitted Assets, Line 28, Column 3).....		
28. Change in provision for reinsurance (Page 3, Line 16, Column 2 minus Column 1).....		
29. Change in surplus notes.....		
30. Surplus (contributed to) withdrawn from Protected Cells.....		
31. Cumulative effect of changes in accounting principles.....		
32. Capital changes:		
32.1 Paid in.....	1,000,000	
32.2 Transferred from surplus (Stock Dividend).....		
32.3 Transferred to surplus.....		
33. Surplus adjustments:		
33.1 Paid in.....	2,002,000	
33.2 Transferred to capital (Stock Dividend).....		
33.3. Transferred from capital.....		
34. Net remittances from or (to) Home Office.....		
35. Dividends to stockholders.....		
36. Change in treasury stock (Page 3, Lines 36.1 and 36.2, Column 2 minus Column 1).....		
37. Aggregate write-ins for gains and losses in surplus.....	0	0
38. Change in surplus as regards policyholders for the year (Lines 22 through 37).....	3,005,954	0
39. Surplus as regards policyholders, December 31 current year (Line 21 plus Line 38) (Page 3, Line 37).....	3,005,954	0
<b>DETAILS OF WRITE-INS</b>		
0501. ....		
0502. ....		
0503. ....		
0598. Summary of remaining write-ins for Line 5 from overflow page.....	0	0
0599. Totals (Lines 0501 through 0503 plus 0598) (Line 5 above).....	0	0
1401. ....		
1402. ....		
1403. ....		
1498. Summary of remaining write-ins for Line 14 from overflow page.....	0	0
1499. Totals (Lines 1401 through 1403 plus 1498) (Line 14 above).....	0	0
3701. ....		
3702. ....		
3703. ....		
3798. Summary of remaining write-ins for Line 37 from overflow page.....	0	0
3799. Totals (Lines 3701 through 3703 plus 3798) (Line 37 above).....	0	0

## CASH FLOW

	1 Current Year	2 Prior Year
<b>CASH FROM OPERATIONS</b>		
1. Premiums collected net of reinsurance.....		
2. Net investment income.....	27,390	
3. Miscellaneous income.....		
4. Total (Lines 1 through 3).....	27,390	0
5. Benefit and loss related payments.....		
6. Net transfers to Separate Accounts, Segregated Accounts and Protected Cell Accounts.....		
7. Commissions, expenses paid and aggregate write-ins for deductions.....	40	
8. Dividends paid to policyholders.....		
9. Federal and foreign income taxes paid (recovered) net of \$.....0 tax on capital gains (losses).....		
10. Total (Lines 5 through 9).....	40	0
11. Net cash from operations (Line 4 minus Line 10).....	27,350	0
<b>CASH FROM INVESTMENTS</b>		
12. Proceeds from investments sold, matured or repaid:		
12.1 Bonds.....		
12.2 Stocks.....		
12.3 Mortgage loans.....		
12.4 Real estate.....		
12.5 Other invested assets.....		
12.6 Net gains or (losses) on cash, cash equivalents and short-term investments.....		
12.7 Miscellaneous proceeds.....		
12.8 Total investment proceeds (Lines 12.1 to 12.7).....	0	0
13. Cost of investments acquired (long-term only):		
13.1 Bonds.....		
13.2 Stocks.....		
13.3 Mortgage loans.....		
13.4 Real estate.....		
13.5 Other invested assets.....		
13.6 Miscellaneous applications.....		
13.7 Total investments acquired (Lines 13.1 to 13.6).....	0	0
14. Net increase (decrease) in contract loans and premium notes.....		
15. Net cash from investments (Line 12.8 minus Lines 13.7 minus Line 14).....	0	0
<b>CASH FROM FINANCING AND MISCELLANEOUS SOURCES</b>		
16. Cash provided (applied):		
16.1 Surplus notes, capital notes.....		
16.2 Capital and paid in surplus, less treasury stock.....	3,002,000	
16.3 Borrowed funds.....		
16.4 Net deposits on deposit-type contracts and other insurance liabilities.....		
16.5 Dividends to stockholders.....		
16.6 Other cash provided (applied).....		
17. Net cash from financing and miscellaneous sources (Lines 16.1 to 16.4 minus Line 16.5 plus Line 16.6).....	3,002,000	0
<b>RECONCILIATION OF CASH, CASH EQUIVALENTS AND SHORT-TERM INVESTMENTS</b>		
18. Net change in cash, cash equivalents and short-term investments (Line 11, plus Lines 15 and 17).....	3,029,350	0
19. Cash, cash equivalents and short-term investments:		
19.1 Beginning of year.....	0	
19.2 End of year (Line 18 plus Line 19.1).....	3,029,350	0

Note: Supplemental disclosures of cash flow information for non-cash transactions:

20.0001 .....		
---------------	--	--

**Ex. of Premiums Earned  
NONE**

**Underwriting and Investment Ex. - Pt. 1A - Recapitulation of All Premiums  
NONE**

**Ex. Premiums Written  
NONE**

**Underwriting and Investment Ex. - Pt. 2 - Losses Paid and Incurred  
NONE**

**Underwriting and Investment Ex. - Pt. 2A - Unpaid Losses and Loss Adjustment Expenses  
NONE**

**UNDERWRITING AND INVESTMENT EXHIBIT**

**PART 3 - EXPENSES**

	1	2	3	4
	Loss Adjustment Expenses	Other Underwriting Expenses	Investment Expenses	Total
1. Claim adjustment services:				
1.1 Direct.....				.0
1.2 Reinsurance assumed.....				.0
1.3 Reinsurance ceded.....				.0
1.4 Net claim adjustment services (1.1 + 1.2 - 1.3).....	0	0	0	0
2. Commission and brokerage:				
2.1 Direct, excluding contingent.....				.0
2.2 Reinsurance assumed, excluding contingent.....				.0
2.3 Reinsurance ceded, excluding contingent.....				.0
2.4 Contingent - direct.....				.0
2.5 Contingent - reinsurance assumed.....				.0
2.6 Contingent - reinsurance ceded.....				.0
2.7 Policy and membership fees.....				.0
2.8 Net commission and brokerage (2.1 + 2.2 - 2.3 + 2.4 + 2.5 - 2.6 + 2.7).....	0	0	0	0
3. Allowances to manager and agents.....				.0
4. Advertising.....				.0
5. Boards, bureaus and associations.....		.40		.40
6. Surveys and underwriting reports.....				.0
7. Audit of assureds' records.....				.0
8. Salary and related items:				
8.1 Salaries.....				.0
8.2 Payroll taxes.....				.0
9. Employee relations and welfare.....				.0
10. Insurance.....				.0
11. Directors' fees.....				.0
12. Travel and travel items.....				.0
13. Rent and rent items.....				.0
14. Equipment.....				.0
15. Cost or depreciation of EDP equipment and software.....				.0
16. Printing and stationery.....		1,535		1,535
17. Postage, telephone and telegraph, exchange and express.....				.0
18. Legal and auditing.....		19,500	325	19,825
19. Totals (Lines 3 to 18).....	0	21,075	325	21,400
20. Taxes, licenses and fees:				
20.1 State and local insurance taxes deducting guaranty association credits of \$.....0.....				.0
20.2 Insurance department licenses and fees.....				.0
20.3 Gross guaranty association assessments.....				.0
20.4 All other (excluding federal and foreign income and real estate).....				.0
20.5 Total taxes, licenses and fees (20.1 + 20.2 + 20.3 + 20.4).....	0	0	0	0
21. Real estate expenses.....				.0
22. Real estate taxes.....				.0
23. Reimbursements by uninsured plans.....				.0
24. Aggregate write-ins for miscellaneous expenses.....	0	0	0	0
25. Total expenses incurred.....	0	21,075	325	(a) 21,400
26. Less unpaid expenses - current year.....				.0
27. Add unpaid expenses - prior year.....				.0
28. Amounts receivable relating to uninsured plans, prior year.....				.0
29. Amounts receivable relating to uninsured plans, current year.....				.0
30. TOTAL EXPENSES PAID (Lines 25 - 26 + 27 - 28 + 29).....	0	21,075	325	21,400

**DETAILS OF WRITE-INS**

2401. ....				.0
2402. ....				.0
2403. ....				.0
2498. Summary of remaining write-ins for Line 24 from overflow page.....	0	0	0	0
2499. Totals (Lines 2401 through 2403 plus 2498) (Line 24 above).....	0	0	0	0

(a) Includes management fees of \$.....0 to affiliates and \$.....0 to non-affiliates.

## EXHIBIT OF NET INVESTMENT INCOME

	1 Collected During Year	2 Earned During Year
1. U.S. government bonds.....	(a).....	.....
1.1 Bonds exempt from U.S. tax.....	(a).....	.....
1.2 Other bonds (unaffiliated).....	(a).....	.....
1.3 Bonds of affiliates.....	(a).....	.....
2.1 Preferred stocks (unaffiliated).....	(b).....	.....
2.11 Preferred stocks of affiliates.....	(b).....	.....
2.2 Common stocks (unaffiliated).....	.....	.....
2.21 Common stocks of affiliates.....	.....	.....
3. Mortgage loans.....	(c).....	.....
4. Real estate.....	(d).....	.....
5. Contract loans.....	.....	.....
6. Cash, cash equivalents and short-term investments.....	(e)..... 27,390	..... 27,390
7. Derivative instruments.....	(f).....	.....
8. Other invested assets.....	.....	.....
9. Aggregate write-ins for investment income.....	..... 0	..... 0
10. Total gross investment income.....	..... 27,390	..... 27,390
11. Investment expenses.....	.....	(g)..... 325
12. Investment taxes, licenses and fees, excluding federal income taxes.....	.....	(g).....
13. Interest expense.....	.....	(h).....
14. Depreciation on real estate and other invested assets.....	.....	(i)..... 0
15. Aggregate write-ins for deductions from investment income.....	.....	..... 0
16. Total deductions (Lines 11 through 15).....	.....	..... 325
17. Net investment income (Line 10 minus Line 16).....	.....	..... 27,065

### DETAILS OF WRITE-INS

0901. ....	.....	.....
0902. ....	.....	.....
0903. ....	.....	.....
0998. Summary of remaining write-ins for Line 9 from overflow page.....	..... 0	..... 0
0999. Totals (Lines 0901 through 0903 plus 0998) (Line 9 above).....	..... 0	..... 0
1501. ....	.....	.....
1502. ....	.....	.....
1503. ....	.....	.....
1598. Summary of remaining write-ins for Line 15 from overflow page.....	.....	..... 0
1599. Totals (Lines 1501 through 1503 plus 1598) (Line 15 above).....	.....	..... 0

- (a) Includes \$.....0 accrual of discount less \$.....0 amortization of premium and less \$.....0 paid for accrued interest on purchases.
- (b) Includes \$.....0 accrual of discount less \$.....0 amortization of premium and less \$.....0 paid for accrued dividends on purchases.
- (c) Includes \$.....0 accrual of discount less \$.....0 amortization of premium and less \$.....0 paid for accrued interest on purchases.
- (d) Includes \$.....0 for company's occupancy of its own buildings; and excludes \$.....0 interest on encumbrances.
- (e) Includes \$.....0 accrual of discount less \$.....0 amortization of premium and less \$.....0 paid for accrued interest on purchases.
- (f) Includes \$.....0 accrual of discount less \$.....0 amortization of premium.
- (g) Includes \$.....0 investment expenses and \$.....0 investment taxes, licenses and fees, excluding federal income taxes, attributable to segregated and Separate Accounts.
- (h) Includes \$.....0 interest on surplus notes and \$.....0 interest on capital notes.
- (i) Includes \$.....0 depreciation on real estate and \$.....0 depreciation on other invested assets.

## EXHIBIT OF CAPITAL GAINS (LOSSES)

	1 Realized Gain (Loss) on Sales or Maturity	2 Other Realized Adjustments	3 Total Realized Capital Gain (Loss) (Columns 1 + 2)	4 Change in Unrealized Capital Gain (Loss)	5 Change in Unrealized Foreign Exchange Capital Gain (Loss)
1. U.S. government bonds.....	.....	.....	.....0	.....	.....
1.1 Bonds exempt from U.S. tax.....	.....	.....	.....0	.....	.....
1.2 Other bonds (unaffiliated).....	.....	.....	.....0	.....	.....
1.3 Bonds of affiliates.....	.....	.....	.....0	.....	.....
2.1 Preferred stocks (unaffiliated).....	.....	.....	.....0	.....	.....
2.11 Preferred stocks of affiliates.....	.....	.....	.....0	.....	.....
2.2 Common stocks (unaffiliated).....	.....	.....	.....0	.....	.....
2.21 Common stocks of affiliates.....	.....	.....	.....0	.....	.....
3. Mortgage loans.....	.....	.....	.....0	.....	.....
4. Real estate.....	.....	.....	.....0	.....	.....
5. Contract loans.....	.....	.....	.....0	.....	.....
6. Cash, cash equivalents and short-term investments.....	.....	.....	.....0	.....	.....
7. Derivative instruments.....	.....	.....	.....0	.....	.....
8. Other invested assets.....	.....	.....	.....0	.....	.....
9. Aggregate write-ins for capital gains (losses).....	..... 0	..... 0	..... 0	..... 0	..... 0
10. Total capital gains (losses).....	..... 0	..... 0	..... 0	..... 0	..... 0

NONE

### DETAILS OF WRITE-INS

0901. ....	.....	.....	.....0	.....	.....
0902. ....	.....	.....	.....0	.....	.....
0903. ....	.....	.....	.....0	.....	.....
0998. Summary of remaining write-ins for Line 9 from overflow page.....	..... 0	..... 0	..... 0	..... 0	..... 0
0999. Totals (Lines 0901 through 0903 plus 0998) (Line 9 above).....	..... 0	..... 0	..... 0	..... 0	..... 0



**EXHIBIT OF NONADMITTED ASSETS**

	1 Current Year Total Nonadmitted Assets	2 Prior Year Total Nonadmitted Assets	3 Change in Total Nonadmitted Assets (Col. 2 - Col. 1)
1. Bonds (Schedule D).....			0
2. Stocks (Schedule D):			
2.1 Preferred stocks.....			0
2.2 Common stocks.....			0
3. Mortgage loans on real estate (Schedule B):			
3.1 First liens.....			0
3.2 Other than first liens.....			0
4. Real estate (Schedule A):			
4.1 Properties occupied by the company.....			0
4.2 Properties held for the production of income.....			0
4.3 Properties held for sale.....			0
5. Cash (Schedule E-Part 1), cash equivalents (Schedule E-Part 2) and short-term investments (Schedule DA).....			0
6. Contract loans.....			0
7. Derivatives (Schedule DB).....			0
8. Other invested assets (Schedule BA).....			0
9. Receivables for securities.....			0
10. Securities lending reinvested collateral assets (Schedule DL).....			0
11. Aggregate write-ins for invested assets.....	0	0	0
12. Subtotals, cash and invested assets (Lines 1 to 11).....	0	0	0
13. Title plants (for Title insurers only).....			0
14. Investment income due and accrued.....			0
15. Premiums and considerations:			
15.1 Uncollected premiums and agents' balances in the course of collection.....			0
15.2 Deferred premiums, agents' balances and installments booked but deferred and not yet due.....			0
15.3 Accrued retrospective premiums and contracts subject to redetermination.....			0
16. Reinsurance:			
16.1 Amounts recoverable from reinsurers.....			0
16.2 Funds held by or deposited with reinsured companies.....			0
16.3 Other amounts receivable under reinsurance contracts.....			0
17. Amounts receivable relating to uninsured plans.....			0
18.1 Current federal and foreign income tax recoverable and interest thereon.....			0
18.2 Net deferred tax asset.....			0
19. Guaranty funds receivable or on deposit.....			0
20. Electronic data processing equipment and software.....			0
21. Furniture and equipment, including health care delivery assets.....			0
22. Net adjustment in assets and liabilities due to foreign exchange rates.....			0
23. Receivables from parent, subsidiaries and affiliates.....			0
24. Health care and other amounts receivable.....			0
25. Aggregate write-ins for other-than-invested assets.....	0	0	0
26. Total assets excluding Separate Accounts, Segregated Accounts and Protected Cell Accounts (Lines 12 through 25).....	0	0	0
27. From Separate Accounts, Segregated Accounts and Protected Cell Accounts.....			0
28. TOTALS (Lines 26 and 27).....	0	0	0

NONE

**DETAILS OF WRITE-INS**

1101. ....			0
1102. ....			0
1103. ....			0
1198. Summary of remaining write-ins for Line 11 from overflow page.....	0	0	0
1199. Totals (Lines 1101 through 1103 plus 1198) (Line 11 above).....	0	0	0
2501. ....			0
2502. ....			0
2503. ....			0
2598. Summary of remaining write-ins for Line 25 from overflow page.....	0	0	0
2599. Totals (Lines 2501 through 2503 plus 2598) (Line 25 above).....	0	0	0

**NOTES TO FINANCIAL STATEMENTS****Note 1 – Summary of Significant Accounting Policies and Going Concern****A. Accounting Practices**

The financial statements of ProTucket Insurance Company are presented on the basis of accounting practices prescribed or permitted by the Rhode Island Insurance Department.

The Rhode Island Insurance Department recognizes only statutory accounting practices prescribed or permitted by the State of Rhode Island for determining and reporting the financial condition and results of operations of an insurance company, for determining its solvency under the Rhode Island Insurance Law. The National Association of Insurance Commissioners' (NAIC) Accounting Practices and Procedures Manual (NAIC SAP) has been adopted as a component of prescribed or permitted practices by the state of Rhode Island. The state has adopted certain prescribed accounting practices that differ from those found in NAIC SAP. Specifically, 1) goodwill arising from the purchase of a subsidiary, controlled or affiliated entity is written off directly to surplus in the year it originates by Rhode Island domiciled companies. In NAIC SAP, goodwill in amounts not to exceed 10% of an reporting entity's capital and surplus may be capitalized and all amounts of goodwill are amortized to unrealized gains and losses on investments over periods not to exceed 10 years, and, 2) 100% of all fixed assets are admitted by Rhode Island domiciled companies. In NAIC SAP, fixed assets are not admitted. The Commissioner of Insurance has the right to permit other specific practices that deviate from prescribed practices.

A reconciliation of the Company's net income and capital and surplus between NAIC SAP and practices prescribed and permitted by the State of ABC is shown below:

	SSAP #	F/S Page	F/S Line #	2017	2016
<b>NET INCOME</b>					
(1) ProTucket Insurance Company Company state basis (Page 4, Line 20, Columns 1 & 2)	XXX	XXX	XXX	\$ 3,954	\$
(2) State Prescribed Practice that are an increase/(decrease) from NAIC SAP				\$	\$
(3) State Permitted Practice that are an increase/(decrease) from NAIC SAP				\$	\$
(4) NAIC SAP (1 – 2 – 3 = 4)	XXX	XXX	XXX	\$ 3,954	\$
<b>SURPLUS</b>					
(5) ProTucket Insurance Company Company state basis (Page 3, line 37, Columns 1 & 2)	XXX	XXX	XXX	\$ 3,005,954	\$
(6) State Prescribed Practice that are an increase/(decrease) from NAIC SAP				\$	\$
(7) State Permitted Practice that are an increase/(decrease) from NAIC SAP				\$	\$
(8) NAIC SAP (5 – 6 – 7 = 8)	XXX	XXX	XXX	\$ 3,005,954	\$

**B. Use of Estimates in the Preparation of the Financial Statement**

The preparation of financial statements in conformity with Statutory Accounting Principles requires management to make estimates and assumptions that affect the reported amounts of assets and liabilities. It also requires disclosure of contingent assets and liabilities at the date of the financial statements and the reported amounts of revenue and expenses during the period. Actual results could differ from those estimates.

**C. Accounting Policy**

Premiums are earned over the terms of the related insurance policies and reinsurance contracts. Unearned premium reserves are established to cover the unexpired portion of premiums written. Such reserves are computed by pro rata methods for direct business and are based on reports received from ceding companies for reinsurance.

Expenses incurred in connection with acquiring new insurance business, including such acquisition costs as sales commissions, are charged to operations as incurred. Expenses incurred are reduced for ceding allowances received or receivable.

In addition, the company uses the following accounting policies

- (1) **Basis for Short-Term Investments**  
Short-term investments are stated at amortized cost.
- (2) **Basis for Bonds and Amortization Schedule**  
Bonds not backed by other loans are stated at amortized cost using the interest method.
- (3) **Basis for Common Stocks**  
Common Stocks are stated at market except that investments in stocks of uncombined subsidiaries and affiliates in which the Company has an interest of 20% or more are carried on the equity basis.
- (4) **Basis for Preferred Stocks**  
Preferred stocks are stated in accordance with the guidance provided in SSAP No. 32.
- (5) **Basis for Mortgage Loans**  
Mortgage loans on real estate are stated at the aggregate carrying value less accrued interest
- (6) **Basis for Loan-Backed Securities and Adjustment Methodology**  
Loan-backed securities are stated at either amortized cost or the lower of amortized cost or fair value. The retrospective adjustment method is used to value all securities except for interest only securities or securities where the yield had become negative, that are valued using the prospective method.
- (7) **Accounting Policies for Investments in Subsidiaries, Controlled and Affiliated Entities**  
Not Applicable
- (8) **Accounting Policies for Investments in Joint Ventures, Partnerships and Limited Liability Entities**

**NOTES TO FINANCIAL STATEMENTS**

Not Applicable

- (9) Accounting Policies for Derivatives  
All derivatives are stated at fair value.
- (10) Anticipated Investment Income Used in Premium Deficiency Calculation  
The Company anticipates investment income as a factor in the premium deficiency calculation, in accordance with SSAP No. 53—Property-Casualty Contracts – Premiums.
- (11) Management's Policies and Methodologies for Estimating Liabilities for Losses and Loss/Claim Adjustment Expenses for A&H Contracts  
Unpaid losses and loss adjustment expenses include an amount determined from individual case estimates and loss reports and an amount, based on past experience, for losses incurred but not reported. Such liabilities are necessarily based on assumptions and estimates and while management believes the amount is adequate, the ultimate liability may be in excess of or less than the amount provided. The methods for making such estimates and for establishing the resulting liabilities are continually reviewed and any adjustments are reflected in the period determined.
- (12) Changes in the Capitalization Policy and Predefined Thresholds from Prior Period  
The Company has not modified its capitalization policy from the prior period.
- (13) Method Used to Estimate Pharmaceutical Rebate Receivables  
Not Applicable
- D. Going Concern  
Not Applicable

**Note 2 – Accounting Changes and Correction of Errors**

The Company has no correction of errors from prior year to report.

**Note 3 – Business Combinations and Goodwill**

Not Applicable

**Note 4 – Discontinued Operations**

Not Applicable

**Note 5 – Investments**

Not Applicable

**Note 6 – Joint Ventures, Partnerships and Limited Liability Companies**

- A. Investments in Joint Ventures, Partnerships and Limited Liability Companies that Exceed 10% of Ownership  
The Company has no investments in Joint Ventures, Partnerships or Limited Liability Companies that exceed 10% of its admitted assets.
- B. Investments in Impaired Joint Ventures, Partnerships and Limited Liability Companies  
The Company did not recognize any impairment write down for its investments in Joint Ventures, Partnerships and Limited Liability Companies during the statement periods.

**Note 7 – Investment Income**

- A. The bases, by category of investment income, for excluding (nonadmitting) any investment income due and accrued:  
The Company did not exclude from surplus any due and accrued investment income.
- B. The total amount excluded:  
N/A

**Note 8 – Derivative Instruments**

Not Applicable

**Note 9 – Income Taxes**

- A. Deferred Tax Assets/(Liabilities)

## 1. Components of Net Deferred Tax Asset/(Liability)

	2017			2016			Change		
	1 Ordinary	2 Capital	3 (Col 1+2) Total	4 Ordinary	5 Capital	6 (Col 4+5) Total	7 (Col 1-4) Ordinary	8 (Col 2-5) Capital	9 (Col 7+8) Total
a. Gross deferred tax assets	\$	\$	\$	\$	\$	\$	\$	\$	\$
b. Statutory valuation allowance adjustment									
c. Adjusted gross deferred tax assets (1a-1b)	\$	\$	\$	\$	\$	\$	\$	\$	\$
d. Deferred tax assets nonadmitted									

## NOTES TO FINANCIAL STATEMENTS

	2017			2016			Change		
	1 Ordinary	2 Capital	3 (Col 1+2) Total	4 Ordinary	5 Capital	6 (Col 4+5) Total	7 (Col 1-4) Ordinary	8 (Col 2-5) Capital	9 (Col 7+8) Total
e. Subtotal net admitted deferred tax asset (1c-1d)	\$	\$	\$	\$	\$	\$	\$	\$	\$
f. Deferred tax liabilities									
g. Net admitted deferred tax assets/(net deferred tax liability) (1e-1f)	\$	\$	\$	\$	\$	\$	\$	\$	\$

2. Admission Calculation Components SSAP No. 101

	2017			2016			Change		
	1 Ordinary	2 Capital	3 (Col 1+2) Total	4 Ordinary	5 Capital	6 (Col 4+5) Total	7 (Col 1-4) Ordinary	8 (Col 2-5) Capital	9 (Col 7+8) Total
a. Federal income taxes paid in prior years recoverable through loss carrybacks									
b. Adjusted gross deferred tax assets expected to be realized (excluding the amount of deferred tax assets from 2(a) above) after application of the threshold limitation. (The lesser of 2(b)1 and 2(b)2 below:									
Adjusted gross deferred tax assets expected to be realized following the balance sheet date									
Adjusted gross deferred tax assets allowed per limitation threshold									
c. Adjusted gross deferred tax assets (excluding the amount of deferred tax assets from 2(a) and 2(b) above) offset by gross deferred tax liabilities									
d. Deferred tax assets admitted as the result of application of SSAP 101. Total (2(a)+2(b)+2(c)									

3. Other Admissibility Criteria

	2017	2016
a. Ratio percentage used to determine recovery period and threshold limitation amount	%	%
b. Amount of adjusted capital and surplus used to determine recovery period and threshold limitation in 2(b)2 above		

4. Impact of Tax Planning Strategies

(a) Determination of adjusted gross deferred tax assets and net admitted deferred tax assets, by tax character as a percentage.

	12/31/2017		12/31/2016		Change	
	1 Ordinary	2 Capital	3 Ordinary	4 Capital	5 (Col. 1-3) Ordinary	6 (Col. 2-4) Capital
1. Adjusted gross DTAs amount from Note 9A1(c)						
2. Percentage of adjusted gross DTAs by tax character attributable to the impact of tax planning strategies	%	%	%	%	%	%
3. Net Admitted Adjusted Gross DTAs amount from Note 9A1(e)						
4. Percentage of net admitted adjusted	%	%	%	%	%	%

**NOTES TO FINANCIAL STATEMENTS**

	12/31/2017		12/31/2016		Change	
	1	2	3	4	5	6
	Ordinary	Capital	Ordinary	Capital	(Col. 1-3) Ordinary	(Col. 2-4) Capital
gross DTAs by tax character admitted because of the impact of tax planning strategies						

(b) Does the company's tax planning strategies include the use of reinsurance? NO

**B. Deferred Tax Liabilities Not Recognized**

- The types of temporary differences for which a DTL has not been recognized and the types of events that would cause those temporary differences to become taxable are:
- The cumulative amount of each type of temporary difference is:
- The amount of the unrecognized DTL for temporary differences related to investments in foreign subsidiaries and foreign corporate joint ventures that are essentially permanent in duration, if determination of that liability is practicable, or a statement that determination is not practicable are:
- The amount of the DTL for temporary differences other than those in item (3) above that is not recognized is:

**C. Current and Deferred Income Taxes****1. Current Income Tax**

	1	2	3
	2017	2016	(Col 1-2) Change
a. Federal	2,036		2,036
b. Foreign			
c. Subtotal	2,036		2,036
d. Federal income tax on net capital gains			
e. Utilization of capital loss carry-forwards			
f. Other			
g. Federal and Foreign income taxes incurred	2,036		2,036

**2. Deferred Tax Assets**

	1	2	3
	2017	2016	(Col 1-2) Change
a. Ordinary:			
1. Discounting of unpaid losses			
2. Unearned premium reserve			
3. Policyholder reserves			
4. Investments			
5. Deferred acquisition costs			
6. Policyholder dividends accrual			
7. Fixed assets			
8. Compensation and benefits accrual			
9. Pension accrual			
10. Receivables - nonadmitted			
11. Net operating loss carry-forward			
12. Tax credit carry-forward			
13. Other (items <5% of total ordinary tax assets)			
Other (items >=5% of total ordinary tax assets)			
14.			
99. Subtotal			
b. Statutory valuation allowance adjustment			
c. Nonadmitted			
d. Admitted ordinary deferred tax assets (2a99-2b-2c)			
e. Capital:			
1. Investments			
2. Net capital loss carry-forward			
3. Real estate			
4. Other (items <5% of total capital tax assets)			
Other (items >=5% of total capital tax assets)			
5.			
99. Subtotal			
f. Statutory valuation allowance adjustment			
g. Nonadmitted			
h. Admitted capital deferred tax assets (2e99-2f-2g)			

**NOTES TO FINANCIAL STATEMENTS**

i. Admitted deferred tax assets (2d+2h)			
---	--	--	--

## 3. Deferred Tax Liabilities

	1	2	3
	2017	2016	(Col 1-2) Change
a. Ordinary:			
1. Investments			
2. Fixed assets			
3. Deferred and uncollected premium			
4. Policyholder reserves			
5. Other (items <5% of total ordinary tax liabilities)			
Other (items >=5% of total ordinary tax liabilities)			
6.			
99. Subtotal			
b. Capital:			
1. Investments			
2. Real estate			
3. Other (tems <5% of total capital tax liabilities)			
Other (items >=5% of total capital tax liabilities)			
4.			
99. Subtotal			
c. Deferred tax liabilities (3a99+3b99)			
4. Net Deferred Tax Assets (2i – 3c)			

## D. Reconciliation of Federal Income Tax Rate to Actual Effective Rate Among the more significant book to tax adjustments were the following:

	Amount	Effective Tax Rate (%)
<b>Permanent Differences:</b>		
Provision computed at statutory rate		%
Proration of tax exempt investment income		%
Tax exempt income deduction		%
Dividends received deduction		%
Disallowed travel and entertainment		%
Other permanent differences		%
<b>Temporary Differences:</b>		
Total ordinary DTAs		%
Total ordinary DTLs		%
Total capital DTAs		%
Total capital DTLs		%
<b>Other:</b>		
Statutory valuation allowance adjustment		%
Accrual adjustment – prior year		%
Other		%
Totals		%
Federal and foreign income taxes incurred		%
Realized capital gains (losses) tax		%
Change in net deferred income taxes		%
Total statutory income taxes	\$	%

## E. Operating Loss Carryforwards and Income Taxes Available for Recoupment

## 1. The amounts, origination dates and expiration dates of operating loss and tax credit carry forwards available for tax purposes:

Description (Operating Loss or Tax Credit Carry Forward)	Amounts	Origination Dates	Expiration Dates

## 2. The following is income tax expense for current year and proceeding years that is available for recoupment in the event of future net losses:

Year	Amounts

## 3. The Company's aggregate amount of deposits admitted under Section 6603 of the Internal Revenue Service Code is .

## F. Consolidated Federal Income Tax Return

1. The Company's federal income tax return is consolidated with the following entities:  
The Company will be included in a consolidated federal income tax return with its parent company, Pro US Holdings, Inc.2. The manner in which the Board of Directors sets forth for allocating the consolidated federal income tax:  
The Company will be the only entity included in a consolidated federal income tax return with its parent company

PRO US Holdings, Inc. and currently there is no written agreement on allocation of federal income tax

however this is subject to change once the parent structure changes.

**NOTES TO FINANCIAL STATEMENTS**

G. Federal or Foreign Federal Income Tax Loss Contingencies:

**Note 10 – Information Concerning Parent, Subsidiaries, Affiliates and Other Related Parties**

A. Nature of the Relationship Involved

The Company is a wholly owned subsidiary of Pro US Holdings, Inc a Delaware corporation. Acquisition was by means of a capital contribution in the amount of \$3,002,000 in exchange for 1,000,000 shares of the Company's Common Stock (100% of the Company's authorized shares) at par value of \$1.00 per share. The sole shareholder of Pro US Holdings is Pro Global Holdings, Ltd, a private limited company organized under the laws of England and Wales based in London, England.

B. Transactions  
Not ApplicableC. Dollar Amounts of Transactions  
Not ApplicableD. Amounts Due From or To Related Parties  
NoneE. Guarantees or Undertakings  
NoneF. Material Management or Service Contracts and Cost-Sharing Arrangements  
None

G. Nature of the Control Relationship

The Company's sole shareholder is Pro US Holdings, a Delaware corporation. With the prior approval of the Rhode Island Insurance Department, all the voting rights connected with the Company stock are exercised by the Company's sole Ultimate Controlling Person by means of a proxy provided by Pro US Holdings, Inc.

H. Amount Deducted from the Value of Upstream Intermediate Entity or Ultimate Parent Owned  
NoneI. Investments in SCA that Exceed 10% of Admitted Assets  
NoneJ. Investments in Impaired SCAs  
NoneK. Investment in Foreign Insurance Subsidiary  
NoneL. Investment in Downstream Noninsurance Holding Company  
NoneM. All SCA Investments  
None

## (1) Balance Sheet Value (Admitted and Nonadmitted) All SCAs (Except 8b(i) Entities)

SCA Entity	Percentage of SCA Ownership	Gross Amount	Admitted Amount	Nonadmitted Amount
a. SSAP No. 97 8a Entities				
	%	\$	\$	\$
Total SSAP No. 97 8a Entities	XXX	\$	\$	\$
b. SSAP No. 97 8b(ii) Entities				
	%	\$	\$	\$
Total SSAP No. 97 8b(ii) Entities	XXX	\$	\$	\$
c. SSAP No. 97 8b(iii) Entities				
	%	\$	\$	\$
Total SSAP No. 97 8b(iii) Entities	XXX	\$	\$	\$
d. SSAP No. 97 8b(iv) Entities				
	%	\$	\$	\$
Total SSAP No. 97 8b(iv) Entities	XXX	\$	\$	\$
e. Total SSAP No. 97 8b Entities (exception 8b(i) entities) (b + c + d)	XXX	\$	\$	\$
f. Aggregate Total (a + e)	XXX	\$	\$	\$

## (2) NAIC Filing Response Information

SCA Entity (Should be the same entities as shown in M(1) above)	Type of NAIC Filing*	Date of Filing to the NAIC	NAIC Valuation Amount	NAIC Response Received Y/N	NAIC Disallowed Entities Valuation Method Resubmission Required Y/N	Code**
a. SSAP No. 97 8a Entities						
			\$			
Total SSAP No. 97 8a Entities	XXX	XXX	\$	XXX	XXX	XXX
b. SSAP No. 97 8b(ii) Entities						
			\$			

**NOTES TO FINANCIAL STATEMENTS**

SCA Entity (Should be the same entities as shown in M(1) above)	Type of NAIC Filing*	Date of Filing to the NAIC	NAIC Valuation Amount	NAIC Response Received Y/N	NAIC Disallowed Entities Valuation Method Resubmission Required Y/N	Code**
Total SSAP No. 97 8b(ii) Entities	XXX	XXX	\$	XXX	XXX	XXX
c. SSAP No. 97 8b(iii) Entities						
			\$			
Total SSAP No. 97 8b(iii) Entities	XXX	XXX	\$	XXX	XXX	XXX
d. SSAP No. 97 8b(iv) Entities						
			\$			
Total SSAP No. 97 8b(iv) Entities	XXX	XXX	\$	XXX	XXX	XXX
e. Total SSAP No. 97 8b Entities (exception 8b(i) entities) (b + c + d)						
	XXX	XXX	\$	XXX	XXX	XXX
f. Aggregate Total (a + e)						
	XXX	XXX	\$	XXX	XXX	XXX

\* S1 – Sub-1, S2 – Sub-2 or RDF – Resubmission of Disallowed Filing

\*\* I – Immaterial or M – Material

## N. Investment in Insurance SCAs

None

(1) Accounting Practice that Differs from NAIC Statutory Accounting Practices and Procedures  
None

(2) Monetary Effect on Net Income and Surplus

SCA Entity (Investments in Insurance SCA Entities)	Monetary Effect On NAIC SAP		Amount of Investment	
	Net Income Increase (Decrease)	Surplus Increase (Decrease)	Per Audited Statutory Equity	If the Insurance SCA Had Completed Statutory Financial Statements*
	\$	\$	\$	\$

\* Per AP&amp;P Manual (without permitted or prescribed practices)

(3) RBC Regulatory Event Because of Prescribed or Permitted Practice

**Note 11 – Debt**

Not Applicable

**Note 12 – Retirement Plans, Deferred Compensation, Postemployment Benefits and Compensated Absences and Other Postretirement Benefit Plans**

Not Applicable

**Note 13 – Capital and Surplus, Dividend Restrictions and Quasi-Reorganizations**

(1) Number of Share and Par or State Value of Each Class

The Company has 1,000,000 share of common stock authorized, and 1,000,000 shares issued and outstanding. All shares are owned by the Company's parent, Pro US Holdings, Inc.

(2) Dividend Rate, Liquidation Value and Redemption Schedule of Preferred Stock Issues

The Company has no preferred stocks outstanding.

(3) Dividend Restrictions

Not Applicable

(4) Dates and Amounts of Dividends Paid

Not Applicable

(5) Profits that may be Paid as Ordinary Dividends to Stockholders

Not Applicable

(6) Restrictions Plans on Unassigned Funds (Surplus)

Not Applicable

(7) Amount of Advances to Surplus not Repaid

Not Applicable

(8) Amount of Stock Held for Special Purposes



**NOTES TO FINANCIAL STATEMENTS**

Not Applicable

(9) Reasons for Changes in Balance of Special Surplus Funds from Prior Period

Not Applicable

(10) The Portion of Unassigned Funds (Surplus) Represented or Reduced by Unrealized Gains and Losses is: \$0.

(11) The Reporting Entity Issued the Following Surplus Debentures or Similar Obligations

Date Issued	Interest Rate	Par Value (Face Amount of Notes)	Carrying Value of Note*	Principal and/or Interest Paid Current Period	Total Principal and/or Interest Paid	Unapproved Principal and/or Interest	Date of Maturity
	%	\$	\$	\$	\$	\$	
<b>Total</b>	XXX	\$	\$	\$	\$	\$	XXX

(12) The impact of any restatement due to prior quasi-reorganizations is as follows

Description (Year)	Change in Surplus	Change in Gross Paid in and Contributed Surplus
	\$	\$

(13) Effective Date of Quasi-Reorganization for a Period of Ten Years Following Reorganization

**Note 14 – Liabilities, Contingencies and Assessments**

Not Applicable

**Note 15 – Leases**

Not Applicable

**Note 16 – Information about Financial Instruments with Off-Balance Sheet Risk and Financial Instruments with Concentrations of Credit Risk**

Not Applicable

**Note 17 – Sale, Transfer and Servicing of Financial Assets and Extinguishments of Liabilities**

Not Applicable

**Note 18 – Gain or Loss to the Reporting Entity from Uninsured Plans and the Portion of Partially Insured Plans**

Not Applicable

**Note 19 – Direct Premium Written/Produced by Managing General Agents/Third Party Administrators**

Not Applicable

**Note 20 – Fair Value Measurements**

A. Fair Value Measurements

(1) Fair Value Measurements at Reporting Date

	Level 1	Level 2	Level 3	Total	Net Asset Value (NAV) Included in Level 2
<b>Assets at Fair Value</b>					
Cash	\$ 3,029,350	\$	\$	\$ 3,029,350	\$
<b>Total</b>	\$ 3,029,350	\$	\$	\$ 3,029,350	\$
<b>Liabilities at Fair Value</b>					
	\$	\$	\$	\$	\$
<b>Total</b>	\$	\$	\$	\$	\$

(2) Fair Value Measurements in (Level 3) of the Fair Value Hierarchy

	Beginning	Transfers Into	Transfers Out of	Total Gains and	Total Gains and	Purchases	Issuances	Sales	Settle-	Ending Balance
--	-----------	----------------	------------------	-----------------	-----------------	-----------	-----------	-------	---------	----------------

## NOTES TO FINANCIAL STATEMENTS

	Balance at 1/1/2017	Level 3	Level 3	(Losses) Included in Net Income	(Losses) Included in Surplus				ments	at 12/31/2017
<b>a. Assets</b>										
	\$	\$	\$	\$	\$	\$	\$	\$	\$	\$
<b>Total</b>	\$	\$	\$	\$	\$	\$	\$	\$	\$	\$
<b>b. Liabilities</b>										
	\$	\$	\$	\$	\$	\$	\$	\$	\$	\$
<b>Total</b>	\$	\$	\$	\$	\$	\$	\$	\$	\$	\$

- (3) Policies when Transfers Between Levels are Recognized
- (4) Description of Valuation Techniques and Inputs Used in Fair Value Measurement
- (5) Fair Value Disclosures

B. Fair Value Reporting under SSAP 100 and Other Accounting Pronouncements

C. Fair Value Level

Type of Financial Instrument	Aggregate Fair Value	Admitted Assets	(Level 1)	(Level 2)	(Level 3)	Not Practicable (Carrying Value)	Net Asset Value (NAV) Included in Level 2
	\$	\$	\$	\$	\$	\$	\$

D. Not Practicable to Estimate Fair Value

Type of Class or Financial Instrument	Carrying Value	Effective Interest Rate	Maturity Date	Explanation
	\$	%		

**Note 21 – Other Items**

Not Applicable

**Note 22 – Events Subsequent**

There are no subsequent events as of 2/20/18 for the statutory statement issued on 12/31/17.

A.	Did the reporting entity write accident and health insurance premium that is subject to Section 9010 of the Federal Affordable Care Act (YES/NO)?	Yes [ ] No [X]
B.	ACA fee assessment payable for the upcoming year	
C.	ACA fee assessment paid	
D.	Premium written subject to ACA 9010 assessment	
E.	Total adjusted capital before surplus adjustment (Five-Year Historical Line 28)	
F.	Total adjusted capital (Five-Year Historical Line 28 minus 22B above)	
G.	Authorized control level (Five-Year Historical Line 29)	
H.	Would reporting the ACA assessment as of December 31, 2017 have triggered an RBC action level (YES/NO)?	Yes [ ] No [X]

**Note 23 – Reinsurance**

Not Applicable

**Note 24 – Retrospectively Rated Contracts and Contracts Subject to Redetermination**

Not Applicable

**Note 25 – Change in Incurred Losses and Loss Adjustment Expenses**

- A. Change in Incurred Losses and Loss Adjustment Expenses  
The Company was not in business in 2016. Reserves as of December 31, 2017 are \$ 0 million.

B. Information about Significant Changes in Methodologies and Assumptions

---

## NOTES TO FINANCIAL STATEMENTS

---

**Note 26 – Intercompany Pooling Arrangements**

Not Applicable

**Note 27 – Structured Settlements**

Not Applicable

**Note 28 – Health Care Receivables**

Not Applicable

**Note 29 – Participating Policies**

Not Applicable

**Note 30 – Premium Deficiency Reserves**

Not Applicable

**Note 31 – High Deductibles**

Not Applicable

**Note 32 – Discounting of Liabilities for Unpaid Losses or Unpaid Loss Adjustment Expenses**

Not Applicable

**Note 33 – Asbestos/Environmental Reserves**

Not Applicable

**Note 34 – Subscriber Savings Accounts**

Not Applicable

**Note 35 – Multiple Peril Crop Insurance**

Not Applicable

**Note 36 – Financial Guaranty Insurance**

Not Applicable

# GENERAL INTERROGATORIES

## PART 1 - COMMON INTERROGATORIES

### GENERAL

- 1.1 Is the reporting entity a member of an Insurance Holding Company System consisting of two or more affiliated persons, one or more of which is an insurer? Yes  No   
 If yes, complete Schedule Y, Parts 1, 1A and 2.
- 1.2 If yes, did the reporting entity register and file with its domiciliary State Insurance Commissioner, Director or Superintendent or with such regulatory official of the state of domicile of the principal insurer in the Holding Company System, a registration statement providing disclosure substantially similar to the standards adopted by the National Association of Insurance Commissioners (NAIC) in its Model Insurance Holding Company System Regulatory Act and model regulations pertaining thereto, or is the reporting entity subject to standards and disclosure requirements substantially similar to those required by such Act and regulations? Yes  No  N/A
- 1.3 State regulating? RHODE ISLAND
- 2.1 Has any change been made during the year of this statement in the charter, by-laws, articles of incorporation, or deed of settlement of the reporting entity? Yes  No
- 2.2 If yes, date of change: \_\_\_\_\_
- 3.1 State as of what date the latest financial examination of the reporting entity was made or is being made. \_\_\_\_\_
- 3.2 State the as of date that the latest financial examination report became available from either the state of domicile or the reporting entity. This date should be the date of the examined balance sheet and not the date the report was completed or released. \_\_\_\_\_
- 3.3 State as of what date the latest financial examination report became available to other states or the public from either the state of domicile or the reporting entity. This is the release date or completion date of the examination report and not the date of the examination (balance sheet date). \_\_\_\_\_
- 3.4 By what department or departments? \_\_\_\_\_

- 3.5 Have all financial statement adjustments within the latest financial examination report been accounted for in a subsequent financial statement filed with departments? Yes  No  N/A
- 3.6 Have all of the recommendations within the latest financial examination report been complied with? Yes  No  N/A
- 4.1 During the period covered by this statement, did any agent, broker, sales representative, non-affiliated sales/service organization or any combination thereof under common control (other than salaried employees of the reporting entity) receive credit or commissions for or control a substantial part (more than 20 percent of any major line of business measured on direct premiums) of:
- 4.11 sales of new business? Yes  No
- 4.12 renewals? Yes  No
- 4.2 During the period covered by this statement, did any sales/service organization owned in whole or in part by the reporting entity or an affiliate, receive credit or commissions for or control a substantial part (more than 20 percent of any major line of business measured on direct premiums) of:
- 4.21 sales of new business? Yes  No
- 4.22 renewals? Yes  No
- 5.1 Has the reporting entity been a party to a merger or consolidation during the period covered by this statement? Yes  No
- 5.2 If yes, provide the name of entity, NAIC company code, and state of domicile (use two letter state abbreviation) for any entity that has ceased to exist as a result of the merger or consolidation.

1 Name of Entity	2 NAIC Company Code	3 State of Domicile

- 6.1 Has the reporting entity had any Certificates of Authority, licenses or registrations (including corporate registration, if applicable) suspended or revoked by any governmental entity during the reporting period? Yes  No
- 6.2 If yes, give full information: \_\_\_\_\_
- 7.1 Does any foreign (non-United States) person or entity directly or indirectly control 10% or more of the reporting entity? Yes  No
- 7.2 If yes,
- 7.21 State the percentage of foreign control 100.0%
- 7.22 State the nationality(s) of the foreign person(s) or entity(s); or if the entity is a mutual or reciprocal, the nationality of its manager or attorney-in-fact and identify the type of entity(s) (e.g., individual, corporation, government, manager or attorney-in-fact).

1 Nationality	2 Type of Entity
United Kingdom	Corporation
United Kingdom	Individual

- 8.1 Is the company a subsidiary of a bank holding company regulated with the Federal Reserve Board? Yes  No
- 8.2 If response to 8.1 is yes, please identify the name of the bank holding company. \_\_\_\_\_
- 8.3 Is the company affiliated with one or more banks, thrifts or securities firms? Yes  No
- 8.4 If the response to 8.3 is yes, please provide below the names and locations (city and state of the main office) of any affiliates regulated by a federal financial regulatory services agency [i.e. the Federal Reserve Board (FRB), the Office of the Comptroller of the Currency (OCC), the Federal Deposit Insurance Corporation (FDIC) and the Securities Exchange Commission (SEC)] and identify the affiliate's primary federal regulator.

1 Affiliate Name	2 Location (City, State)	3 FRB	4 OCC	5 FDIC	6 SEC

9. What is the name and address of the independent certified public accountant or accounting firm retained to conduct the annual audit? \_\_\_\_\_
- 10.1 Has the insurer been granted any exemptions to the prohibited non-audit services provided by the certified independent public accountant requirements as allowed in Section 7H of the Annual Financial Reporting Model Regulation (Model Audit Rule), or substantially similar state law or regulation? Yes  No
- 10.2 If the response to 10.1 is yes, provide information related to this exemption: \_\_\_\_\_
- 10.3 Has the insurer been granted any exemptions related to other requirements of the Annual Financial Reporting Model Regulation as allowed for in Section 18A of the Model Regulation, or substantially similar state law or regulation? Yes  No
- 10.4 If the response to 10.3 is yes, provide information related to this exemption: \_\_\_\_\_
- 10.5 Has the reporting entity established an Audit Committee in compliance with the domiciliary state insurance laws? Yes  No  N/A
- 10.6 If the response to 10.5 is no or n/a, please explain: \_\_\_\_\_

# GENERAL INTERROGATORIES

## PART 1 - COMMON INTERROGATORIES

11. What is the name, address and affiliation (officer/employee of the reporting entity or actuary/consultant associated with an actuarial consulting firm) of the individual providing the statement of actuarial opinion/certification?  
The Company did not write any business nor have any reserves in 2017 to conduct an actuarial opinion.
- 12.1 Does the reporting entity own any securities of a real estate holding company or otherwise hold real estate indirectly? Yes [ ] No [ X ]
- 12.11 Name of real estate holding company
- 12.12 Number of parcels involved 0
- 12.13 Total book/adjusted carrying value \$ 0
- 12.2 If yes, provide explanation
13. **FOR UNITED STATES BRANCHES OF ALIEN REPORTING ENTITIES ONLY:**
- 13.1 What changes have been made during the year in the United States manager or the United States trustees of the reporting entity?
- 13.2 Does this statement contain all business transacted for the reporting entity through its United States Branch on risks wherever located? Yes [ ] No [ X ]
- 13.3 Have there been any changes made to any of the trust indentures during the year? Yes [ ] No [ X ]
- 13.4 If answer to (13.3) is yes, has the domiciliary or entry state approved the changes? Yes [ ] No [ ] N/A [ X ]
- 14.1 Are the senior officers (principal executive officer, principal financial officer, principal accounting officer or controller, or persons performing similar functions) of the reporting entity subject to a code of ethics, which includes the following standards? Yes [ X ] No [ ]
- (a) Honest and ethical conduct, including the ethical handling of actual or apparent conflicts of interest between personal and professional relationships;
- (b) Full, fair, accurate, timely and understandable disclosure in the periodic reports required to be filed by the reporting entity;
- (c) Compliance with applicable governmental laws, rules and regulations;
- (d) The prompt internal reporting of violations to an appropriate person or persons identified in the code; and
- (e) Accountability for adherence to the code.
- 14.11 If the response to 14.1 is no, please explain:
- 14.2 Has the code of ethics for senior managers been amended? Yes [ ] No [ X ]
- 14.21 If the response to 14.2 is yes, provide information related to amendment(s).
- 14.3 Have any provisions of the code of ethics been waived for any of the specified officers? Yes [ ] No [ X ]
- 14.31 If the response to 14.3 is yes, provide the nature of any waiver(s).
- 15.1 Is the reporting entity the beneficiary of a Letter of Credit that is unrelated to reinsurance where the issuing or confirming bank is not on the SVO Bank List? Yes [ ] No [ X ]
- 15.2 If the response to 15.1 is yes, indicate the American Bankers Association (ABA) Routing Number and the name of the issuing or confirming bank of the Letter of Credit and describe the circumstances in which the Letter of Credit is triggered.

1 American Bankers Association (ABA) Routing Number	2 Issuing or Confirming Bank Name	3 Circumstances That Can Trigger the Letter of Credit	4 Amount
			\$

### BOARD OF DIRECTORS

16. Is the purchase or sale of all investments of the reporting entity passed upon either by the Board of Directors or a subordinator committee thereof? Yes [ X ] No [ ]
17. Does the reporting entity keep a complete permanent record of the proceedings of its Board of Directors and all subordinate committees thereof? Yes [ X ] No [ ]
18. Has the reporting entity an established procedure for disclosure to its Board of Directors or trustees of any material interest or affiliation on the part of any of its officers, directors, trustees or responsible employees that is in conflict or is likely to conflict with the official duties of such person? Yes [ X ] No [ ]

### FINANCIAL

19. Has this statement been prepared using a basis of accounting other than Statutory Accounting Principles (e.g., Generally Accepted Accounting Principles)? Yes [ ] No [ X ]
- 20.1 Total amount loaned during the year (inclusive of Separate Accounts, exclusive of policy loans):
- 20.11 To directors or other officers \$ 0
- 20.12 To stockholders not officers \$ 0
- 20.13 Trustees, supreme or grand (Fraternal only) \$ 0
- 20.2 Total amount of loans outstanding at the end of year (inclusive of Separate Accounts, exclusive of policy loans):
- 20.21 To directors or other officers \$ 0
- 20.22 To stockholders not officers 0
- 20.23 Trustees, supreme or grand (Fraternal only) 0
- 21.1 Were any assets reported in this statement subject to a contractual obligation to transfer to another party without the liability for such obligation being reporting in the statement? Yes [ ] No [ X ]
- 21.2 If yes, state the amount thereof at December 31 of the current year:
- 21.21 Rented from others \$ 0
- 21.22 Borrowed from others \$ 0
- 21.23 Leased from others \$ 0
- 21.24 Other \$ 0
- 22.1 Does this statement include payments for assessments as described in the *Annual Statement Instructions* other than guaranty fund or guaranty association assessments? Yes [ ] No [ X ]
- 22.2 If answer is yes:
- 22.21 Amount paid as losses or risk adjustment \$ 0
- 22.22 Amount paid as expenses \$ 0
- 22.23 Other amounts paid \$ 0
- 23.1 Does the reporting entity report any amounts due from parent, subsidiaries or affiliates on Page 2 of this statement? Yes [ ] No [ X ]
- 23.2 If yes, indicate any amounts receivable from parent included in the Page 2 amount: \$ 0

### INVESTMENT

# GENERAL INTERROGATORIES

## PART 1 - COMMON INTERROGATORIES

- 24.01 Were all the stocks, bonds and other securities owned December 31 of current year, over which the reporting entity has exclusive control, in the actual possession of the reporting entity on said date (other than securities lending programs addressed in 24.03)? Yes  No
- 24.02 If no, give full and complete information, relating thereto:
- 24.03 For security lending programs, provide a description of the program including value for collateral and amount of loaned securities, and whether collateral is carried on or off-balance sheet (an alternative is to reference Note 17 where this information is also provided).
- 24.04 Does the company's security lending program meet the requirements for a conforming program as outlined in the *Risk-Based Capital Instructions*? Yes  No  N/A
- 24.05 If answer to 24.04 is yes, report amount of collateral for conforming programs. \$ 0
- 24.06 If answer to 24.04 is no, report amount of collateral for other programs \$ 0
- 24.07 Does your securities lending program require 102% (domestic securities) and 105% (foreign securities) from the counterparty at the outset of the contract? Yes  No  N/A
- 24.08 Does the reporting entity non-admit when the collateral received from the counterparty falls below 100%? Yes  No  N/A
- 24.09 Does the reporting entity or the reporting entity's securities lending agent utilize the Master Securities Lending Agreement (MSLA) to conduct securities lending? Yes  No  N/A
- 24.10 For the reporting entity's security lending program, state the amount of the following as of December 31 of the current year:
- 24.101 Total fair value of reinvested collateral assets reported on Schedule DL, Parts 1 and 2: \$ 0
- 24.102 Total book adjusted/carrying value of reinvested collateral assets reported on Schedule DL, Parts 1 and 2: \$ 0
- 24.103 Total payable for securities lending reported on the liability page: \$ 0
- 25.1 Were any of the stocks, bonds or other assets of the reporting entity owned at December 31 of the current year not exclusively under the control of the reporting entity or has the reporting entity sold or transferred any assets subject to a put option contract that is current in force? (Exclude securities subject to Interrogatory 21.1 and 24.03.) Yes  No
- 25.2 If yes, state the amount thereof at December 31 of the current year:
- 25.21 Subject to repurchase agreements \$ 0
- 25.22 Subject to reverse repurchase agreements \$ 0
- 25.23 Subject to dollar repurchase agreements \$ 0
- 25.24 Subject to reverse dollar repurchase agreements \$ 0
- 25.25 Placed under option agreements \$ 0
- 25.26 Letter stock or securities restricted as sale – excluding FHLB Capital Stock \$ 0
- 25.27 FHLB Capital Stock \$ 0
- 25.28 On deposit with states \$ 0
- 25.29 On deposit with other regulatory bodies \$ 0
- 25.30 Pledged as collateral – excluding collateral pledged to an FHLB \$ 0
- 25.31 Pledged as collateral to FHLB – including assets backing funding agreements \$ 0
- 25.32 Other \$ 0
- 25.3 For category (25.26) provide the following:
- | 1<br>Nature of Restriction | 2<br>Description | 3<br>Amount |
|----------------------------|------------------|-------------|
|                            |                  | \$          |
- 26.1 Does the reporting entity have any hedging transactions reported on Schedule DB? Yes  No
- 26.2 If yes, has a comprehensive description of the hedging program been made available to the domiciliary state? Yes  No  N/A   
If no, attach a description with this statement.
- 27.1 Were any preferred stocks or bonds owned as of December 31 of the current year mandatorily convertible into equity, or, at the option of the issuer, convertible into equity? Yes  No
- 27.2 If yes, state the amount thereof at December 31 of the current year: \$ 0
28. Excluding items in Schedule E-Part 3-Special Deposits, real estate, mortgage loans and investments held physically in the reporting entity's offices, vaults or safety deposit boxes, were all stocks, bonds and other securities, owned throughout the current year held pursuant to a custodial agreement with a qualified bank or trust company in accordance with Section 1, III - General Examination Considerations, F. Outsourcing of Critical Functions, Custodial or Safekeeping Agreements of the NAIC *Financial Condition Examiners Handbook*? Yes  No
- 28.01 For agreements that comply with the requirements of the NAIC *Financial Condition Examiners Handbook*, complete the following:
- | 1<br>Name of Custodian(s)    | 2<br>Custodian's Address                 |
|------------------------------|--|
| The Washington Trust Company | 23 Broad Street, Westerly, RI 02891-1868 |
- 28.02 For all agreements that do not comply with the requirements of the NAIC *Financial Condition Examiners Handbook*, provide the name, location and a complete explanation
- | 1<br>Name(s) | 2<br>Location(s) | 3<br>Complete Explanation(s) |
|--------------|------------------|------------------------------|
|              |                  |                              |
- 28.03 Have there been any changes, including name changes, in the custodian(s) identified in 28.01 during the current year? Yes  No
- 28.04 If yes, give full and complete information relating thereto:
- | 1<br>Old Custodian | 2<br>New Custodian | 3<br>Date of Change | 4<br>Reason |
|--------------------|--------------------|---------------------|-------------|
|                    |                    |                     |             |
- 28.05 Investment management – Identify all investment advisors, investment managers, broker/dealers, including individuals that have the authority to make investment decisions on behalf of the reporting entity. For assets that are managed internally by employees of the reporting entity, note as such. ["...that have access to the investment accounts", "... handle securities"].
- | 1<br>Name of Firm or Individual | 2<br>Affiliation |
|---------------------------------|------------------|
|                                 |                  |
- 28.0597 For those firms/individuals listed in the table for Question 28.05, do any firms/individuals unaffiliated with the reporting entity (i.e. designated with a "U") manage more than 10% of the reporting entity's assets? Yes  No

## GENERAL INTERROGATORIES

### PART 1 - COMMON INTERROGATORIES

28.0598 For firms/individuals unaffiliated with the reporting entity (i.e. designated with a "U") listed in the table for Question 28.05, does the total assets under management aggregate to more than 50% of the reporting entity's assets? Yes [ ] No [ ]

28.06 For those firms or individuals listed in the table for 28.05 with an affiliation code of "A" (affiliated) or "U" (unaffiliated), provide the information for the table below.

1	2	3	4	5
Central Registration Depository Number	Name of Firm or Individual	Legal Entity Identifier (LEI)	Registered With	Investment Management Agreement (IMA) Filed

29.1 Does the reporting entity have any diversified mutual funds reported in Schedule D-Part 2 (diversified according to the Securities and Exchange Commission (SEC) in the Investment Company Act of 1940 [Section 5 (b) (1)])? Yes [ ] No [X]

29.2 If yes, complete the following schedule:

1 CUSIP	2 Name of Mutual Fund	3 Book/Adjusted Carrying Value
		\$
29.2999 TOTAL		\$

29.3 For each mutual fund listed in the table above, complete the following schedule:

1 Name of Mutual Fund (from above table)	2 Name of Significant Holding of the Mutual Fund	3 Amount of Mutual Fund's Book/Adjusted Carrying Value Attributable to the Holding	4 Date of Valuation
		\$	

30. Provide the following information for all short-term and long-term bonds and all preferred stocks. Do not substitute amortized value or statement value for fair value.

		1 Statement (Admitted) Value	2 Fair Value	3 Excess of Statement over Fair Value (-), or Fair Value over Statement (+)
30.1	Bonds	\$ 0	\$ 0	\$ 0
30.2	Preferred Stocks	\$ 0	\$ 0	\$ 0
30.3	Totals	\$ 0	\$ 0	\$ 0

30.4 Describe the sources or methods utilized in determining the fair values:

31.1 Was the rate used to calculate fair value determined by a broker or custodian for any of the securities in Schedule D? Yes [ ] No [ ]

31.2 If the answer to 31.1 is yes, does the reporting entity have a copy of the broker's or custodian's pricing policy (hard copy or electronic copy) for all brokers or custodians used as a pricing source? Yes [ ] No [ ]

31.3 If the answer to 31.2 is no, describe the reporting entity's process for determining a reliable pricing source for purposes of disclosure of fair value for Schedule D:

32.1 Have all the filing requirements of the *Purposes and Procedures Manual of the NAIC Investment Analysis Office* been followed? Yes [X] No [ ]

32.2 If no, list exceptions:

33. By self-designating 5\*GI securities, the reporting entity is certifying the following elements for each self-designation 5\*GI security:

- a. Documentation necessary to permit a full credit analysis of the security does not exist.
- b. Issuer or obligor is current on all contracted interest and principal payments.
- c. The insurer has an actual expectation of ultimate payment of all contracted interest and principal.

Has the reporting entity self-designated 5\*GI securities? Yes [ ] No [X]

#### OTHER

34.1 Amount of payments to trade associations, service organizations and statistical or rating bureaus, if any? \$ 0

34.2 List the name of the organization and the amount paid if any such payment represented 25% or more of the total payments to trade associations, service organizations and statistical or rating bureaus during the period covered by this statement.

1 Name	2 Amount Paid
	\$

35.1 Amount of payments for legal expenses, if any? \$ 0

35.2 List the name of the firm and the amount paid if any such payment represented 25% or more of the total payments for legal expenses during the period covered by this statement.

1 Name	2 Amount Paid
	\$

36.1 Amount of payments for expenditures in connection with matters before legislative bodies, officers or departments of government, if any? \$ 0

36.2 List the name of the firm and the amount paid if any such payment represented 25% or more of the total payment expenditures in connection with matters before legislative bodies, officers or departments of government during the period covered by this statement.

1 Name	2 Amount Paid
	\$

**GENERAL INTERROGATORIES****PART 2 – PROPERTY & CASUALTY INTERROGATORIES**

1.1	Does the reporting entity have any direct Medicare Supplement Insurance in force?			Yes [ ]	No [ X ]
1.2	If yes, indicate premium earned on U.S. business only.		\$		0
1.3	What portion of Item (1.2) is not reported on the Medicare Supplement Insurance Experience Exhibit?		\$		0
1.31	Reason for excluding:				
1.4	Indicate amount of earned premium attributable to Canadian and/or Other Alien not included in Item (1.2) above.		\$		0
1.5	Indicate total incurred claims on all Medicare Supplement insurance.		\$		0
1.6	Individual policies:				
	Most current three years:				
1.61	Total premium earned		\$		0
1.62	Total incurred claims		\$		0
1.63	Number of covered lives				0
	All years prior to most current three years:				
1.64	Total premium earned		\$		0
1.65	Total incurred claims		\$		0
1.66	Number of covered lives				0
1.7	Group policies:				
	Most current three years:				
1.71	Total premium earned		\$		0
1.72	Total incurred claims		\$		0
1.73	Number of covered lives				0
	All years prior to most current three years:				
1.74	Total premium earned		\$		0
1.75	Total incurred claims		\$		0
1.76	Number of covered lives				0
2.	Health Test:				
		1	2		
		Current Year	Prior Year		
2.1	Premium Numerator	\$ 0	\$ 0		
2.2	Premium Denominator	\$ 0	\$ 0		
2.3	Premium Ratio (2.1/2.2)	0.0%	0.0%		
2.4	Reserve Numerator	\$ 0	\$ 0		
2.5	Reserve Denominator	\$ 0	\$ 0		
2.6	Reserve Ratio (2.4/2.5)	0.0%	0.0%		
3.1	Does the reporting entity issue both participating and non-participating policies?			Yes [ ]	No [ X ]
3.2	If yes, state the amount of calendar year premiums written on:				
3.21	Participating policies		\$		0
3.22	Non-participating policies		\$		0
4.	FOR MUTUAL REPORTING ENTITIES AND RECIPROCAL EXCHANGES ONLY:				
4.1	Does the reporting entity issue assessable policies?			Yes [ ]	No [ ]
4.2	Does the reporting entity issue non-assessable policies?			Yes [ ]	No [ ]
4.3	If assessable policies are issued, what is the extent of the contingent liability of the policyholders?				%
4.4	Total amount of assessments paid or ordered to be paid during the year on deposit notes or contingent premiums.		\$		0
5.	FOR RECIPROCAL EXCHANGES ONLY:				
5.1	Does the exchange appoint local agents?			Yes [ ]	No [ ]
5.2	If yes, is the commission paid:				
5.21	Out of Attorney's-in-fact compensation			Yes [ ]	No [ ] N/A [ ]
5.22	As a direct expense of the exchange			Yes [ ]	No [ ] N/A [ ]
5.3	What expenses of the exchange are not paid out of the compensation of the Attorney-in-fact?				
5.4	Has any Attorney-in-fact compensation, contingent on fulfillment of certain conditions, been deferred?			Yes [ ]	No [ ]
5.5	If yes, give full information:				
6.1	What provision has this reporting entity made to protect itself from an excessive loss in the event of a catastrophe under a workers' compensation contract issued without limit of loss? <u>The Company does not have any workers' compensation contracts.</u>				
6.2	Describe the method used to estimate this reporting entity's probable maximum insurance loss, and identify the type of insured exposures comprising that probable maximum loss, the locations of concentrations of those exposures and the external resources (such as consulting firms or computer software models), if any, used in the estimation process: <u>The Company has not written any business nor taken on any risks in 2017.</u>				
6.3	What provision has this reporting entity made (such as catastrophic reinsurance program) to protect itself from an excessive loss arising from the types and concentrations of insured exposures comprising its probable maximum property insurance loss? <u>The Company has not written any business nor taken on any risks in 2017.</u>				
6.4	Does the reporting entity carry catastrophe reinsurance protection for at least one reinstatement, in an amount sufficient to cover its estimated probable maximum loss attributable to a single loss event or occurrence?			Yes [ ]	No [ X ]
6.5	If no, describe any arrangements or mechanisms employed by the reporting entity to supplement its catastrophe reinsurance program or to hedge its exposure to unreinsured catastrophic loss: <u>The Company has not written any business nor taken on any risks in 2017. The Company currently does not have any reinsurance contracts.</u>				
7.1	Has the reporting entity reinsured any risk with any other entity under a quota share reinsurance contract that includes a provision that would limit the reinsurer's losses below the stated quota share percentage (e.g., a deductible, a loss ratio corridor, a loss cap, an aggregate limit or any similar provisions)?			Yes [ ]	No [ X ]



**GENERAL INTERROGATORIES****PART 2 – PROPERTY & CASUALTY INTERROGATORIES**

7.2	If yes, indicate the number of reinsurance contracts containing such provisions.	0
7.3	If yes, does the amount of reinsurance credit taken reflect the reduction in quota share coverage caused by any applicable limiting provision(s)?	Yes [ ] No [ ]
8.1	Has this reporting entity reinsured any risk with any other entity and agreed to release such entity from liability, in whole or in part, from any loss that may occur on this risk, or portion thereof, reinsured?	Yes [ ] No [X]
8.2	If yes, give full information	
9.1	Has the reporting entity ceded any risk under any reinsurance contract (or under multiple contracts with the same reinsurer or its affiliates) for which during the period covered by the statement: (i) it recorded a positive or negative underwriting result greater than 5% of prior year-end surplus as regards policyholders or it reported calendar year written premium ceded or year-end loss and loss expense reserves ceded greater than 5% of prior year-end surplus as regards policyholders; (ii) it accounted for that contract as reinsurance and not as a deposit; and (iii) the contract(s) contain one or more of the following features or other features that would have similar results: (a) A contract term longer than two years and the contract is noncancellable by the reporting entity during the contract term; (b) A limited or conditional cancellation provision under which cancellation triggers an obligation by the reporting entity, or an affiliate of the reporting entity, to enter into a new reinsurance contract with the reinsurer, or an affiliate of the reinsurer; (c) Aggregate stop loss reinsurance coverage; (d) A unilateral right by either party (or both parties) to commute the reinsurance contract, whether conditional or not, except for such provisions which are only triggered by a decline in the credit status of the other party; (e) A provision permitting reporting of losses, or payment of losses, less frequently than on a quarterly basis (unless there is no activity during the period); or (f) Payment schedule, accumulating retentions from multiple years or any features inherently designed to delay timing of the reimbursement to the ceding entity?	Yes [ ] No [X]
9.2	Has the reporting entity during the period covered by the statement ceded any risk under any reinsurance contract (or under multiple contracts with the same reinsurer or its affiliates), for which, during the period covered by the statement, it recorded a positive or negative underwriting result greater than 5% of prior year-end surplus as regards policyholders or it reported calendar year written premium ceded or year-end loss and loss expense reserves ceded greater than 5% of prior year-end surplus as regards policyholders; excluding cessions to approved pooling arrangements or to captive insurance companies that are directly or indirectly controlling, controlled by, or under common control with (i) one or more unaffiliated policyholders of the reporting entity, or (ii) an association of which one or more unaffiliated policyholders of the reporting entity is a member where: (a) The written premium ceded to the reinsurer by the reporting entity or its affiliates represents fifty percent (50%) or more of the entire direct and assumed premium written by the reinsurer based on its most recently available financial statement; or (b) Twenty-five percent (25%) or more of the written premium ceded to the reinsurer has been retroceded back to the reporting entity or its affiliates in a separate reinsurance contract.	Yes [ ] No [X]
9.3	If yes to 9.1 or 9.2, please provide the following information in the Reinsurance Summary Supplemental Filing for General Interrogatory 9: (a) The aggregate financial statement impact gross of all such ceded reinsurance contracts on the balance sheet and statement of income; (b) A summary of the reinsurance contract terms and indicate whether it applies to the contracts meeting the criteria in 9.1 or 9.2; and (c) A brief discussion of management's principle objectives in entering into the reinsurance contract including the economic purpose to be achieved.	
9.4	Except for transactions meeting the requirements of paragraph 31 of SSAP No. 62R, <i>Property and Casualty Reinsurance</i> , has the reporting entity ceded any risk under any reinsurance contract (or multiple contracts with the same reinsurer or its affiliates) during the period covered by the financial statement, and either: (a) Accounted for that contract as reinsurance (either prospective or retroactive) under statutory accounting principles ("SAP") and as a deposit under generally accepted accounting principles ("GAAP"); or (b) Accounted for that contract as reinsurance under GAAP and as a deposit under SAP?	Yes [ ] No [X]
9.5	If yes to 9.4, explain in the Reinsurance Summary Supplemental Filing for General Interrogatory 9 (Section D) why the contract(s) is treated differently for GAAP and SAP.	
9.6	The reporting entity is exempt from the Reinsurance Attestation Supplement under one or more of the following criteria: (a) The entity does not utilize reinsurance; or, (b) The entity only engages in a 100% quota share contract with an affiliate and the affiliated or lead company has filed an attestation supplement; or (c) The entity has no external cessions and only participates in an intercompany pool and the affiliated or lead company has filed an attestation supplement.	Yes [X] No [ ] Yes [ ] No [X] Yes [ ] No [X]
10.	If the reporting entity has assumed risks from another entity, there should be charged on account of such reinsurances a reserve equal to that which the original entity would have been required to charge had it retained the risks. Has this been done?	Yes [ ] No [ ] N/A [X]
11.1	Has the reporting entity guaranteed policies issued by any other entity and now in force?	Yes [ ] No [X]
11.2	If yes, give full information	
12.1	If the reporting entity recorded accrued retrospective premiums on insurance contracts on Line 15.3 of the assets schedule, Page 2, state the amount of corresponding liabilities recorded for: 12.11 Unpaid losses 12.12 Unpaid underwriting expenses (including loss adjustment expenses)	\$ 0 \$ 0
12.2	Of the amount on Line 15.3, Page 2, state the amount that is secured by letters of credit, collateral and other funds?	\$ 0
12.3	If the reporting entity underwrites commercial insurance risks, such as workers' compensation, are premium notes or promissory notes accepted from its insureds covering unpaid premiums and/or unpaid losses?	Yes [ ] No [ ] N/A [X]
12.4	If yes, provide the range of interest rates charged under such notes during the period covered by this statement: 12.41 From 12.42 To	% %
12.5	Are letters of credit or collateral and other funds received from insureds being utilized by the reporting entity to secure premium notes or promissory notes taken by a reporting entity, or to secure any of the reporting entity's reported direct unpaid loss reserves, including unpaid losses under loss deductible features of commercial policies?	Yes [ ] No [X]
12.6	If yes, state the amount thereof at December 31 of current year: 12.61 Letters of Credit 12.62 Collateral and other funds	\$ 0 \$ 0
13.1	Largest net aggregate amount insured in any one risk (excluding workers' compensation):	\$ 0
13.2	Does any reinsurance contract considered in the calculation of this amount include an aggregate limit of recovery without also including a reinstatement provision?	Yes [ ] No [X]
13.3	State the number of reinsurance contracts (excluding individual facultative risk certificates, but including facultative programs, automatic	0

**GENERAL INTERROGATORIES****PART 2 – PROPERTY & CASUALTY INTERROGATORIES**

facilities or facultative obligatory contracts) considered in the calculation of the amount.

14.1 Is the reporting entity a cedant in a multiple cedant reinsurance contract? Yes [ ] No [X]

14.2 If yes, please describe the method of allocating and recording reinsurance among the cedants:

14.3 If the answer to 14.1 is yes, are the methods described in item 14.2 entirely contained in the respective multiple cedant reinsurance contracts? Yes [ ] No [ ]

14.4 If the answer to 14.3 is no, are all the methods described in 14.2 entirely contained in written agreements? Yes [ ] No [ ]

14.5 If the answer to 14.4 is no, please explain:

15.1 Has the reporting entity guaranteed any financed premium accounts? Yes [ ] No [X]

15.2 If yes, give full information

16.1 Does the reporting entity write any warranty business? Yes [ ] No [X]

If yes, disclose the following information for each of the following types of warranty coverage:

	1	2	3	4	5
	Direct Losses Incurred	Direct Losses Unpaid	Direct Written Premium	Direct Premium Unearned	Direct Premium Earned
16.11 Home	\$ 0	\$ 0	\$ 0	\$ 0	\$ 0
16.12 Products	\$ 0	\$ 0	\$ 0	\$ 0	\$ 0
16.13 Automobile	\$ 0	\$ 0	\$ 0	\$ 0	\$ 0
16.14 Other*	\$ 0	\$ 0	\$ 0	\$ 0	\$ 0

\* Disclose type of coverage:

17.1 Does the reporting entity include amounts recoverable on unauthorized reinsurance in Schedule F-Part 3 that it excludes from Schedule F-Part 5. Yes [ ] No [X]

Incurred but not reported losses on contracts in force prior to July 1, 1984, and not subsequently renewed are exempt from inclusion in Schedule F-Part 5. Provide the following information for this exemption:

17.11 Gross amount of unauthorized reinsurance in Schedule F-Part 3 excluded from Schedule F-Part 5	\$ 0
17.12 Unfunded portion of Interrogatory 17.11	\$ 0
17.13 Paid losses and loss adjustment expenses portion of Interrogatory 17.11	\$ 0
17.14 Case reserves portion of Interrogatory 17.11	\$ 0
17.15 Incurred but not reported portion of Interrogatory 17.11	\$ 0
17.16 Unearned premium portion of Interrogatory 17.11	\$ 0
17.17 Contingent commission portion of Interrogatory 17.11	\$ 0

Provide the following information for all other amounts included in Schedule F-Part 3 and excluded from Schedule F-Part 5, not included above.

17.18 Gross amount of unauthorized reinsurance in Schedule F-Part 3 excluded from Schedule F-Part 5	\$ 0
17.19 Unfunded portion of Interrogatory 17.18	\$ 0
17.20 Paid losses and loss adjustment expenses portion of Interrogatory 17.18	\$ 0
17.21 Case reserves portion of Interrogatory 17.18	\$ 0
17.22 Incurred but not reported portion of Interrogatory 17.18	\$ 0
17.23 Unearned premium portion of Interrogatory 17.18	\$ 0
17.24 Contingent commission portion of Interrogatory 17.18	0

18.1 Do you act as a custodian for health savings accounts? Yes [ ] No [X]

18.2 If yes, please provide the amount of custodial funds held as of the reporting date. \$ 0

18.3 Do you act as an administrator for health savings accounts? Yes [ ] No [X]

18.4 If yes, please provide the balance of the funds administered as of the reporting date. \$ 0

**FIVE-YEAR HISTORICAL DATA**

Show amounts in whole dollars only, no cents; show percentages to one decimal place, i.e. 17.6.

	1 2017	2 2016	3 2015	4 2014	5 2013
<b>Gross Premiums Written (Page 8, Part 1B, Cols. 1, 2 &amp; 3)</b>					
1. Liability lines (Lines 11.1, 11.2, 16, 17.1, 17.2, 17.3, 18.1, 18.2, 19.1, 19.2 & 19.3, 19.4).....					
2. Property lines (Lines 1, 2, 9, 12, 21 & 26).....					
3. Property and liability combined lines (Lines 3, 4, 5, 8, 22 & 27).....					
4. All other lines (Lines 6, 10, 13, 14, 15, 23, 24, 28, 29, 30 & 34).....					
5. Nonproportional reinsurance lines (Lines 31, 32 & 33).....					
6. Total (Line 35).....	0	0	0	0	0
<b>Net Premiums Written (Page 8, Part 1B, Col. 6)</b>					
7. Liability lines (Lines 11.1, 11.2, 16, 17.1, 17.2, 17.3, 18.1, 18.2, 19.1, 19.2 & 19.3, 19.4).....					
8. Property lines (Lines 1, 2, 9, 12, 21 & 26).....					
9. Property and liability combined lines (Lines 3, 4, 5, 8, 22 & 27).....					
10. All other lines (Lines 6, 10, 13, 14, 15, 23, 24, 28, 29, 30 & 34).....					
11. Nonproportional reinsurance lines (Lines 31, 32 & 33).....					
12. Total (Line 35).....	0	0	0	0	0
<b>Statement of Income (Page 4)</b>					
13. Net underwriting gain (loss) (Line 8).....	(21,075)				
14. Net investment gain (loss) (Line 11).....	27,065				
15. Total other income (Line 15).....					
16. Dividends to policyholders (Line 17).....					
17. Federal and foreign income taxes incurred (Line 19).....	2,036				
18. Net income (Line 20).....	3,954	0	0	0	0
<b>Balance Sheet Lines (Pages 2 and 3)</b>					
19. Total admitted assets excluding protected cell business (Page 2, Line 26, Col. 3).....	3,029,350				
20. Premiums and considerations (Page 2, Col. 3):					
20.1 In course of collection (Line 15.1).....					
20.2 Deferred and not yet due (Line 15.2).....					
20.3 Accrued retrospective premiums (Line 15.3).....					
21. Total liabilities excluding protected cell business (Page 3, Line 26).....	23,396				
22. Losses (Page 3, Line 1).....					
23. Loss adjustment expenses (Page 3, Line 3).....					
24. Unearned premiums (Page 3, Line 9).....					
25. Capital paid up (Page 3, Lines 30 & 31).....	1,000,000				
26. Surplus as regards policyholders (Page 3, Line 37).....	3,005,954				
<b>Cash Flow (Page 5)</b>					
27. Net cash from operations (Line 11).....	27,350				
<b>Risk-Based Capital Analysis</b>					
28. Total adjusted capital.....					
29. Authorized control level risk-based capital.....					
<b>Percentage Distribution of Cash, Cash Equivalents and Invested Assets</b> (Page 2, Col. 3) (Item divided by Page 2, Line 12, Col. 3) x 100.0					
30. Bonds (Line 1).....					
31. Stocks (Lines 2.1 & 2.2).....					
32. Mortgage loans on real estate (Lines 3.1 & 3.2).....					
33. Real estate (Lines 4.1, 4.2 & 4.3).....					
34. Cash, cash equivalents and short-term investments (Line 5).....	100.0				
35. Contract loans (Line 6).....					
36. Derivatives (Line 7).....					
37. Other invested assets (Line 8).....					
38. Receivables for securities (Line 9).....					
39. Securities lending reinvested collateral assets (Line 10).....					
40. Aggregate write-ins for invested assets (Line 11).....					
41. Cash, cash equivalents and invested assets (Line 12).....	100.0	0.0	0.0	0.0	0.0
<b>Investments in Parent, Subsidiaries and Affiliates</b>					
42. Affiliated bonds (Sch. D, Summary, Line 12, Col. 1).....					
43. Affiliated preferred stocks (Sch. D, Summary, Line 18, Col. 1).....					
44. Affiliated common stocks (Sch. D, Summary, Line 24, Col. 1).....					
45. Affiliated short-term investments (subtotals included in Schedule DA, Verification, Column 5, Line 10).....					
46. Affiliated mortgage loans on real estate.....					
47. All other affiliated.....					
48. Total of above lines 42 to 47.....	0	0	0	0	0
49. Total investment in parent included in Lines 42 to 47 above.....					
50. Percentage of investments in parent, subsidiaries and affiliates to surplus as regards policyholders (Line 48 above divided by Page 3, Col. 1, Line 37 x 100.0).....	0.0				

## FIVE-YEAR HISTORICAL DATA

(Continued)

	1	2	3	4	5
	2017	2016	2015	2014	2013
<b>Capital and Surplus Accounts (Page 4)</b>					
51. Net unrealized capital gains (losses) (Line 24).....					
52. Dividends to stockholders (Line 35).....					
53. Change in surplus as regards policyholders for the year (Line 38).....	3,005,954				
<b>Gross Losses Paid (Page 9, Part 2, Cols. 1 &amp; 2)</b>					
54. Liability lines (Lines 11.1, 11.2, 16, 17.1, 17.2, 17.3, 18.1, 18.2, 19.1, 19.2 & 19.3, 19.4).....					
55. Property lines (Lines 1, 2, 9, 12, 21 & 26).....					
56. Property and liability combined lines (Lines 3, 4, 5, 8, 22 & 27).....					
57. All other lines (Lines 6, 10, 13, 14, 15, 23, 24, 28, 29, 30 & 34).....					
58. Nonproportional reinsurance lines (Lines 31, 32 & 33).....					
59. Total (Line 35).....	.0	.0	.0	.0	.0
<b>Net Losses Paid (Page 9, Part 2, Col. 4)</b>					
60. Liability lines (Lines 11.1, 11.2, 16, 17.1, 17.2, 17.3, 18.1, 18.2, 19.1, 19.2 & 19.3, 19.4).....					
61. Property lines (Lines 1, 2, 9, 12, 21 & 26).....					
62. Property and liability combined lines (Lines 3, 4, 5, 8, 22 & 27).....					
63. All other lines (Lines 6, 10, 13, 14, 15, 23, 24, 28, 29, 30 & 34).....					
64. Nonproportional reinsurance lines (Lines 31, 32 & 33).....					
65. Total (Line 35).....	.0	.0	.0	.0	.0
<b>Operating Percentages (Page 4)</b> (Item divided by Page 4, Line 1) x 100.0					
66. Premiums earned (Line 1).....	100.0	100.0	100.0	100.0	100.0
67. Losses incurred (Line 2).....					
68. Loss expenses incurred (Line 3).....					
69. Other underwriting expenses incurred (Line 4).....					
70. Net underwriting gain (loss) (Line 8).....					
<b>Other Percentages</b>					
71. Other underwriting expenses to net premiums written (Page 4, Lines 4 + 5 - 15 divided by Page 8, Part 1B, Col. 6, Line 35 x 100.0).....					
72. Losses and loss expenses incurred to premiums earned (Page 4, Lines 2 + 3 divided by Page 4, Line 1 x 100.0).....					
73. Net premiums written to policyholders' surplus (Page 8, Part 1B, Col. 6, Line 35, divided by Page 3, Line 37, Col. 1 x 100.0).....					
<b>One Year Loss Development (\$000 omitted)</b>					
74. Development in estimated losses and loss expenses incurred prior to current year (Schedule P, Part 2-Summary, Line 12, Col. 11).....					
75. Percent of development of losses and loss expenses incurred to policyholders' surplus of prior year-end (Line 74 above divided by Page 4, Line 21, Col. 1 x 100).....					
<b>Two Year Loss Development (\$000 omitted)</b>					
76. Development in estimated losses and loss expenses incurred 2 years before the current year and prior year (Schedule P, Part 2-Summary, Line 12, Col. 12).....					
77. Percent of development of losses and loss expenses incurred to reported policyholders' surplus of second prior-year end (Line 76 above divided by Page 4, Line 21, Col. 2 x 100.0).....					

If a party to a merger, have the two most recent years of this exhibit been restated due to a merger in compliance with the disclosure requirements of SSAP No. 3, Accounting Changes and Correction of Errors?

Yes [ ] No [ ]

If no, please explain:

---

**Sch. P - Pt. 1**  
**NONE**

**Sch. P - Pt. 2**  
**NONE**

**Sch. P - Pt. 3**  
**NONE**

**Sch. P - Pt. 4**  
**NONE**

**ProTucket Insurance Company**  
**SCHEDULE T - EXHIBIT OF PREMIUMS WRITTEN**

Allocated by States and Territories

States, Etc.	1 Active Status	Gross Premiums, Including Policy and Membership Fees Less Return Premiums and Premiums on Policies Not Taken		4 Dividends Paid or Credited to Policyholders on Direct Business	5 Direct Losses Paid (Deducting Salvage)	6 Direct Losses Incurred	7 Direct Losses Unpaid	8 Finance and Service Charges not Included in Premiums	9 Direct Premiums Written for Federal Purchasing Groups (Incl. in Col. 2)
		2 Direct Premiums Written	3 Direct Premiums Earned						
1. Alabama.....AL	N								
2. Alaska.....AK	N								
3. Arizona.....AZ	N								
4. Arkansas.....AR	N								
5. California.....CA	N								
6. Colorado.....CO	N								
7. Connecticut.....CT	N								
8. Delaware.....DE	N								
9. District of Columbia.....DC	N								
10. Florida.....FL	N								
11. Georgia.....GA	N								
12. Hawaii.....HI	N								
13. Idaho.....ID	N								
14. Illinois.....IL	N								
15. Indiana.....IN	N								
16. Iowa.....IA	N								
17. Kansas.....KS	N								
18. Kentucky.....KY	N								
19. Louisiana.....LA	N								
20. Maine.....ME	N								
21. Maryland.....MD	N								
22. Massachusetts.....MA	N								
23. Michigan.....MI	N								
24. Minnesota.....MN	N								
25. Mississippi.....MS	N								
26. Missouri.....MO	N								
27. Montana.....MT	N								
28. Nebraska.....NE	N								
29. Nevada.....NV	N								
30. New Hampshire.....NH	N								
31. New Jersey.....NJ	N								
32. New Mexico.....NM	N								
33. New York.....NY	N								
34. North Carolina.....NC	N								
35. North Dakota.....ND	N								
36. Ohio.....OH	N								
37. Oklahoma.....OK	N								
38. Oregon.....OR	N								
39. Pennsylvania.....PA	N								
40. Rhode Island.....RI	L								
41. South Carolina.....SC	N								
42. South Dakota.....SD	N								
43. Tennessee.....TN	N								
44. Texas.....TX	N								
45. Utah.....UT	N								
46. Vermont.....VT	N								
47. Virginia.....VA	N								
48. Washington.....WA	N								
49. West Virginia.....WV	N								
50. Wisconsin.....WI	N								
51. Wyoming.....WY	N								
52. American Samoa.....AS	N								
53. Guam.....GU	N								
54. Puerto Rico.....PR	N								
55. US Virgin Islands.....VI	N								
56. Northern Mariana Islands.....MP	N								
57. Canada.....CAN	N								
58. Aggregate Other Alien.....OT	XXX	0	0	0	0	0	0	0	0
59. Totals.....(a).....1		0	0	0	0	0	0	0	0

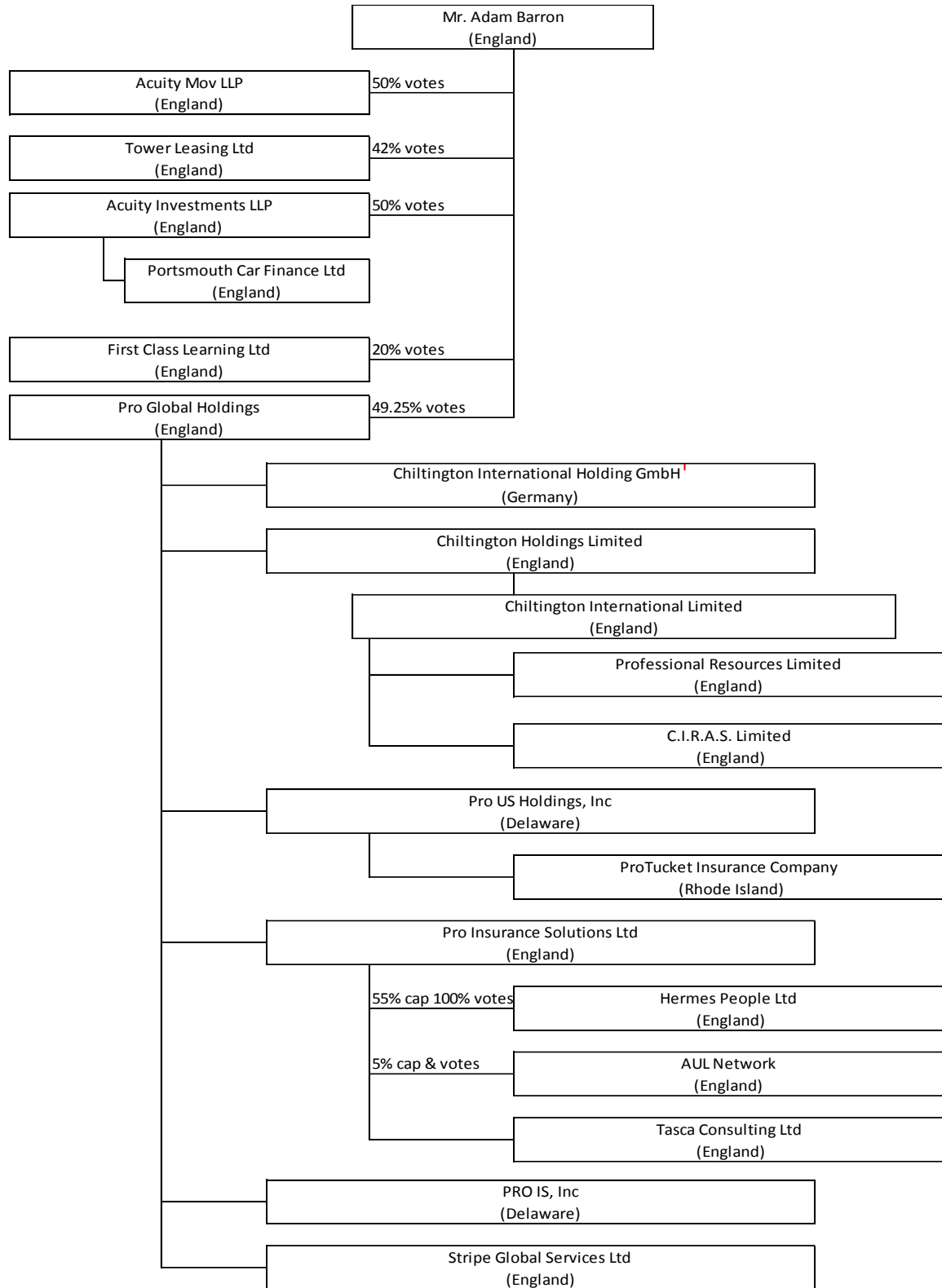
**DETAILS OF WRITE-INS**

58001.....	XXX								
58002.....	XXX								
58003.....	XXX								
58998. Summary of remaining write-ins for Line 58 from overflow page	XXX	0	0	0	0	0	0	0	0
58999. Totals (Lines 58001 thru 58003+ Line 58998) (Line 58 above)	XXX	0	0	0	0	0	0	0	0

(L) - Licensed or Chartered - Licensed Insurance Carrier or Domiciled RRG; (R) - Registered - Non-domiciled RRGs; (Q) - Qualified - Qualified or Accredited Reinsurer; (E) - Eligible - Reporting Entities eligible or approved to write Surplus Lines in the state (other than their state of domicile see DSLI); (D) - DSLI - Domestic Surplus Lines Insurer (DSLI) - Reporting entities authorized to write Surplus Lines in the state of domicile; (N) - None of the above - Not allowed to write business in the state.

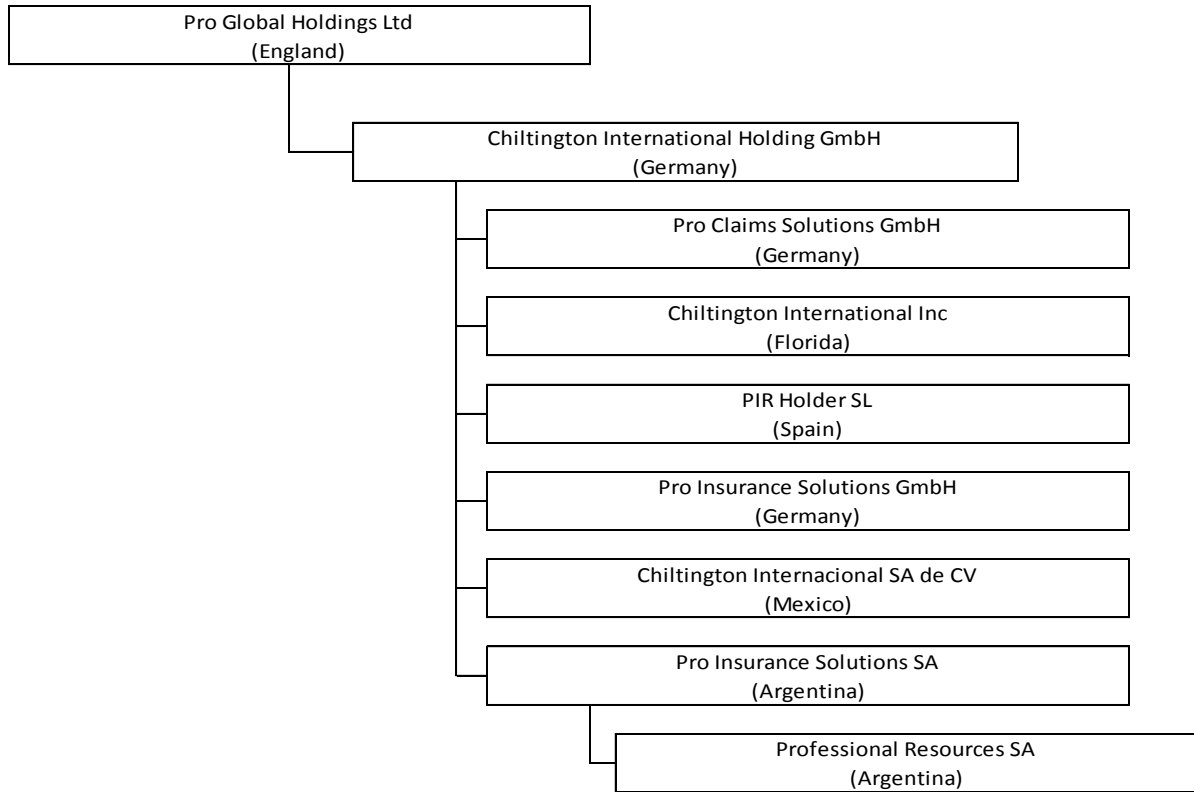
**Explanation of Basis of Allocation of Premiums by States, etc.**

(a) Insert the number of D and L responses except for Canada and Other Alien.



**FN 1** See Appendix 1 for listing of Chilton International GmbH subsidiaries

### Appendix 1 - Subsidiaries of Chilmington International GmbH





## 2017 ALPHABETICAL INDEX -- PROPERTY & CASUALTY ANNUAL STATEMENT BLANK

Assets	2	Schedule P-Part 2G-Special Liability (Ocean Marine, Aircraft (All Perils), Boiler & Machinery)	58
Cash Flow	5	Schedule P-Part 2H-Section 1-Other Liability-Occurrence	58
Exhibit of Capital Gains (Losses)	12	Schedule P-Part 2H-Section 2-Other Liability-Claims-Made	58
Exhibit of Net Investment Income	12	Schedule P-Part 2I-Spec. Prop. (Fire, Allied Lines, Inland Marine, Earthquake, Burglary, Theft)	59
Exhibit of Nonadmitted Assets	13	Schedule P-Part 2J-Auto Physical Damage	59
Exhibit of Premiums and Losses (State Page)	19	Schedule P-Part 2K-Fidelity, Surety	59
Five-Year Historical Data	17	Schedule P-Part 2L-Other (Including Credit, Accident and Health)	59
General Interrogatories	15	Schedule P-Part 2M-International	59
Jurat Page	1	Schedule P-Part 2N-Reinsurance - Nonproportional Assumed Property	60
Liabilities, Surplus and Other Funds	3	Schedule P-Part 2O-Reinsurance - Nonproportional Assumed Liability	60
Notes To Financial Statements	14	Schedule P-Part 2P-Reinsurance - Nonproportional Assumed Financial Lines	60
Overflow Page For Write-ins	100	Schedule P-Part 2R-Section 1-Products Liability-Occurrence	61
Schedule A-Part 1	E01	Schedule P-Part 2R-Section 2-Products Liability-Claims-Made	61
Schedule A-Part 2	E02	Schedule P-Part 2S-Financial Guaranty/Mortgage Guaranty	61
Schedule A-Part 3	E03	Schedule P-Part 2T-Warranty	61
Schedule A-Verification Between Years	SI02	Schedule P-Part 3A-Homeowners/Farmowners	62
Schedule B-Part 1	E04	Schedule P-Part 3B-Private Passenger Auto Liability/Medical	62
Schedule B-Part 2	E05	Schedule P-Part 3C-Commercial Auto/Truck Liability/Medical	62
Schedule B-Part 3	E06	Schedule P-Part 3D-Workers' Compensation (Excluding Excess Workers Compensation)	62
Schedule B-Verification Between Years	SI02	Schedule P-Part 3E-Commercial Multiple Peril	62
Schedule BA-Part 1	E07	Schedule P-Part 3F-Section 1-Medical Professional Liability-Occurrence	63
Schedule BA-Part 2	E08	Schedule P-Part 3F-Section 2-Medical Professional Liability-Claims-Made	63
Schedule BA-Part 3	E09	Schedule P-Part 3G-Special Liability (Ocean Marine, Aircraft (All Perils), Boiler & Machinery)	63
Schedule BA-Verification Between Years	SI03	Schedule P-Part 3H-Section 1-Other Liability-Occurrence	63
Schedule D-Part 1	E10	Schedule P-Part 3H-Section 2-Other Liability-Claims-Made	63
Schedule D-Part 1A-Section 1	SI05	Schedule P-Part 3I-Spec. Prop. (Fire, Allied Lines, Inland Marine, Earthquake, Burglary, Theft)	64
Schedule D-Part 1A-Section 2	SI08	Schedule P-Part 3J-Auto Physical Damage	64
Schedule D-Part 2-Section 1	E11	Schedule P-Part 3K-Fidelity/Surety	64
Schedule D-Part 2-Section 2	E12	Schedule P-Part 3L-Other (Including Credit, Accident and Health)	64
Schedule D-Part 3	E13	Schedule P-Part 3M-International	64
Schedule D-Part 4	E14	Schedule P-Part 3N-Reinsurance - Nonproportional Assumed Property	65
Schedule D-Part 5	E15	Schedule P-Part 3O-Reinsurance - Nonproportional Assumed Liability	65
Schedule D-Part 6-Section 1	E16	Schedule P-Part 3P-Reinsurance - Nonproportional Assumed Financial Lines	65
Schedule D-Part 6-Section 2	E16	Schedule P-Part 3R-Section 1-Products Liability-Occurrence	66
Schedule D-Summary By Country	SI04	Schedule P-Part 3R-Section 2-Products Liability-Claims-Made	66
Schedule D-Verification Between Years	SI03	Schedule P-Part 3S-Financial Guaranty/Mortgage Guaranty	66
Schedule DA-Part 1	E17	Schedule P-Part 3T-Warranty	66
Schedule DA-Verification Between Years	SI10	Schedule P-Part 4A-Homeowners/Farmowners	67
Schedule DB-Part A-Section 1	E18	Schedule P-Part 4B-Private Passenger Auto Liability/Medical	67
Schedule DB-Part A-Section 2	E19	Schedule P-Part 4C-Commercial Auto/Truck Liability/Medical	67
Schedule DB-Part A-Verification Between Years	SI11	Schedule P-Part 4D-Workers' Compensation (Excluding Excess Workers Compensation)	67
Schedule DB-Part B-Section 1	E20	Schedule P-Part 4E-Commercial Multiple Peril	67
Schedule DB-Part B-Section 2	E21	Schedule P-Part 4F-Section 1-Medical Professional Liability-Occurrence	68
Schedule DB-Part B-Verification Between Years	SI11	Schedule P-Part 4F-Section 2-Medical Professional Liability-Claims-Made	68
Schedule DB-Part C-Section 1	SI12	Schedule P-Part 4G-Special Liability (Ocean Marine, Aircraft (All Perils), Boiler & Machinery)	68
Schedule DB-Part C-Section 2	SI13	Schedule P-Part 4H-Section 1-Other Liability-Occurrence	68
Schedule DB-Part D-Section 1	E22	Schedule P-Part 4H-Section 2-Other Liability-Claims-Made	68
Schedule DB-Part D-Section 2	E23	Schedule P-Part 4I-Spec. Prop. (Fire, Allied Lines, Inland Marine, Earthquake, Burglary & Theft)	69
Schedule DB-Verification	SI14	Schedule P-Part 4J-Auto Physical Damage	69
Schedule DL-Part 1	E24	Schedule P-Part 4K-Fidelity/Surety	69
Schedule DL-Part 2	E25	Schedule P-Part 4L-Other (Including Credit, Accident and Health)	69
Schedule E-Part 1-Cash	E26	Schedule P-Part 4M-International	69
Schedule E-Part 2-Cash Equivalents	E27	Schedule P-Part 4N-Reinsurance - Nonproportional Assumed Property	70
Schedule E-Part 3-Special Deposits	E28	Schedule P-Part 4O-Reinsurance - Nonproportional Assumed Liability	70
Schedule E-Verification Between Years	SI15	Schedule P-Part 4P-Reinsurance - Nonproportional Assumed Financial Lines	70
Schedule F-Part 1	20	Schedule P-Part 4R-Section 1-Products Liability-Occurrence	71
Schedule F-Part 2	21	Schedule P-Part 4R-Section 2-Products Liability-Claims-Made	71
Schedule F-Part 3	22	Schedule P-Part 4S-Financial Guaranty/Mortgage Guaranty	71
Schedule F-Part 4	23	Schedule P-Part 4T-Warranty	71
Schedule F-Part 5	24	Schedule P-Part 5A-Homeowners/Farmowners	72
Schedule F-Part 6-Section 1	25	Schedule P-Part 5B-Private Passenger Auto Liability/Medical	73
Schedule F-Part 6-Section 2	26	Schedule P-Part 5C-Commercial Auto/Truck Liability/Medical	74
Schedule F-Part 7	27	Schedule P-Part 5D-Workers' Compensation (Excluding Excess Workers Compensation)	75
Schedule F-Part 8	28	Schedule P-Part 5E-Commercial Multiple Peril	76
Schedule F-Part 9	29	Schedule P-Part 5F-Medical Professional Liability-Claims-Made	78
Schedule H-Accident and Health Exhibit-Part 1	30	Schedule P-Part 5F-Medical Professional Liability-Occurrence	77
Schedule H-Part 2, Part 3 and Part 4	31	Schedule P-Part 5H-Other Liability-Claims-Made	80
Schedule H-Part 5-Health Claims	32	Schedule P-Part 5H-Other Liability-Occurrence	79
Schedule P-Part 1-Summary	33	Schedule P-Part 5R-Products Liability-Claims-Made	82
Schedule P-Part 1A-Homeowners/Farmowners	35	Schedule P-Part 5R-Products Liability-Occurrence	81
Schedule P-Part 1B-Private Passenger Auto Liability/Medical	36	Schedule P-Part 5T-Warranty	83
Schedule P-Part 1C-Commercial Auto/Truck Liability/Medical	37	Schedule P-Part 6C-Commercial Auto/Truck Liability/Medical	84
Schedule P-Part 1D-Workers' Compensation (Excluding Excess Workers Compensation)	38	Schedule P-Part 6D-Workers' Compensation (Excluding Excess Workers Compensation)	84
Schedule P-Part 1E-Commercial Multiple Peril	39	Schedule P-Part 6E-Commercial Multiple Peril	85
Schedule P-Part 1F-Section 1-Medical Professional Liability-Occurrence	40	Schedule P-Part 6H-Other Liability-Claims-Made	86
Schedule P-Part 1F-Section 2-Medical Professional Liability-Claims-Made	41	Schedule P-Part 6H-Other Liability-Occurrence	85
Schedule P-Part 1G-Special Liability (Ocean, Marine, Aircraft (All Perils), Boiler & Machinery)	42	Schedule P-Part 6M-International	86
Schedule P-Part 1H-Section 1-Other Liability-Occurrence	43	Schedule P-Part 6N-Reinsurance - Nonproportional Assumed Property	87
Schedule P-Part 1H-Section 2-Other Liability-Claims-Made	44	Schedule P-Part 6O-Reinsurance - Nonproportional Assumed Liability	87
Schedule P-Part 1I-Spec. Prop. (Fire, Allied Lines, Inland Marine, Earthquake, Burglary & Theft)	45	Schedule P-Part 6R-Products Liability-Claims-Made	88
Schedule P-Part 1J-Auto Physical Damage	46	Schedule P-Part 6R-Products Liability-Occurrence	88
Schedule P-Part 1K-Fidelity/Surety	47	Schedule P-Part 7A-Primary Loss Sensitive Contracts	89
Schedule P-Part 1L-Other (Including Credit, Accident and Health)	48	Schedule P-Part 7B-Reinsurance Loss Sensitive Contracts	91
Schedule P-Part 1M-International	49	Schedule P Interrogatories	93
Schedule P-Part 1N-Reinsurance - Nonproportional Assumed Property	50	Schedule T-Exhibit of Premiums Written	94
Schedule P-Part 1O-Reinsurance - Nonproportional Assumed Liability	51	Schedule T-Part 2-Interstate Compact	95
Schedule P-Part 1P-Reinsurance - Nonproportional Assumed Financial Lines	52	Schedule Y-Information Concerning Activities of Insurer Members of a Holding Company Group	96
Schedule P-Part 1R-Section 1-Products Liability-Occurrence	53	Schedule Y-Detail of Insurance Holding Company System	97
Schedule P-Part 1R-Section 2-Products Liability-Claims-Made	54	Schedule Y-Part 2-Summary of Insurer's Transactions With Any Affiliates	98
Schedule P-Part 1S-Financial Guaranty/Mortgage Guaranty	55	Statement of Income	4
Schedule P-Part 1T-Warranty	56	Summary Investment Schedule	SI01
Schedule P-Part 2, Part 3 and Part 4 - Summary	34	Supplemental Exhibits and Schedules Interrogatories	99
Schedule P-Part 2A-Homeowners/Farmowners	57	Underwriting and Investment Exhibit Part 1	6
Schedule P-Part 2B-Private Passenger Auto Liability/Medical	57	Underwriting and Investment Exhibit Part 1A	7
Schedule P-Part 2C-Commercial Auto/Truck Liability/Medical	57	Underwriting and Investment Exhibit Part 1B	8
Schedule P-Part 2D-Workers' Compensation (Excluding Excess Workers Compensation)	57	Underwriting and Investment Exhibit Part 2	9
Schedule P-Part 2E-Commercial Multiple Peril	57	Underwriting and Investment Exhibit Part 2A	10
Schedule P-Part 2F-Section 1-Medical Professional Liability-Occurrence	58	Underwriting and Investment Exhibit Part 3	11
Schedule P-Part 2F-Section 2-Medical Professional Liability-Claims-Made	58		