



PROPERTY AND CASUALTY COMPANIES - ASSOCIATION EDITION

ANNUAL STATEMENT

FOR THE YEAR ENDED DECEMBER 31, 2022
OF THE CONDITION AND AFFAIRS OF THE

ProTucket Insurance Company

NAIC Group Code _____ NAIC Company Code 16125 Employer's ID Number 81-5375941

(Current) (Prior)

Organized under the Laws of Rhode Island, State of Domicile or Port of Entry RI
Country of Domicile United States of America

Incorporated/Organized 02/24/2017 Commenced Business 03/15/2017

Statutory Home Office One Financial Plaza, Ste 2800, Westminster St, Providence, RI, US 02903
(Street and Number) (City or Town, State, Country and Zip Code)

Main Administrative Office 3501 Concord Road, Suite 120
(Street and Number)
York, PA, US 17402 717-840-2402
(City or Town, State, Country and Zip Code) (Area Code) (Telephone Number)

Mail Address 3501 Concord Road, Suite 120 PO Box 22008, York, PA, US 17402
(Street and Number or P.O. Box) (City or Town, State, Country and Zip Code)

Primary Location of Books and Records 3501 Concord Road, Suite 120
(Street and Number)
York, PA, US 17402 717-840-2402
(City or Town, State, Country and Zip Code) (Area Code) (Telephone Number)

Internet Website Address N/A

Statutory Statement Contact Karen Elizabeth Burmeister, 717-817-1395
(Name) (Area Code) (Telephone Number)
Karen.Burmeister@Pro-Global.com, _____
(E-mail Address) (FAX Number)

OFFICERS

President & CEO Marvin David Mohn Secretary Albert Bernard Miller
Treasurer Andrew James Donnelly #

OTHER

Richard Frederick Lawson, Vice President Keith Kaplan, Vice President Aaron Levine, Assistant Vice President

DIRECTORS OR TRUSTEES

Andrew James Donnelly Richard Frederick Lawson Steve Lewis #
Marvin David Mohn Julie Osborn

State of Pennsylvania SS
County of _____

The officers of this reporting entity being duly sworn, each depose and say that they are the described officers of said reporting entity, and that on the reporting period stated above, all of the herein described assets were the absolute property of the said reporting entity, free and clear from any liens or claims thereon, except as herein stated, and that this statement, together with related exhibits, schedules and explanations therein contained, annexed or referred to, is a full and true statement of all the assets and liabilities and of the condition and affairs of the said reporting entity as of the reporting period stated above, and of its income and deductions therefrom for the period ended, and have been completed in accordance with the NAIC Annual Statement Instructions and Accounting Practices and Procedures manual except to the extent that: (1) state law may differ; or, (2) that state rules or regulations require differences in reporting not related to accounting practices and procedures, according to the best of their information, knowledge and belief, respectively. Furthermore, the scope of this attestation by the described officers also includes the related corresponding electronic filing with the NAIC, when required, that is an exact copy (except for formatting differences due to electronic filing) of the enclosed statement. The electronic filing may be requested by various regulators in lieu of or in addition to the enclosed statement.

Marvin David Mohn
President & CEO

Albert Bernard Miller
Secretary

Andrew James Donnelly
Treasurer

Subscribed and sworn to before me this _____ day of _____

- a. Is this an original filing? Yes [X] No []
b. If no,
1. State the amendment number.....
2. Date filed
3. Number of pages attached.....

ANNUAL STATEMENT FOR THE YEAR 2022 OF THE ProTucket Insurance Company

ASSETS

	Current Year			Prior Year
	1 Assets	2 Nonadmitted Assets	3 Net Admitted Assets (Cols. 1 - 2)	4 Net Admitted Assets
1. Bonds (Schedule D)	463,317		463,317	303,595
2. Stocks (Schedule D):				
2.1 Preferred stocks			0	0
2.2 Common stocks			0	0
3. Mortgage loans on real estate (Schedule B):				
3.1 First liens			0	0
3.2 Other than first liens			0	0
4. Real estate (Schedule A):				
4.1 Properties occupied by the company (less \$ encumbrances)			0	0
4.2 Properties held for the production of income (less \$ encumbrances)			0	0
4.3 Properties held for sale (less \$ encumbrances)			0	0
5. Cash (\$ 7,143,391 , Schedule E - Part 1), cash equivalents (\$ 45,470,644 , Schedule E - Part 2) and short-term investments (\$, Schedule DA)	52,614,035		52,614,035	58,119,390
6. Contract loans (including \$ premium notes)			0	0
7. Derivatives (Schedule DB)			0	0
8. Other invested assets (Schedule BA)			0	0
9. Receivable for securities			0	0
10. Securities lending reinvested collateral assets (Schedule DL)			0	0
11. Aggregate write-ins for invested assets	0	0	0	0
12. Subtotals, cash and invested assets (Lines 1 to 11)	53,077,352	0	53,077,352	58,422,985
13. Title plants less \$ charged off (for Title insurers only)			0	0
14. Investment income due and accrued	243		243	2,111
15. Premiums and considerations:				
15.1 Uncollected premiums and agents' balances in the course of collection			0	0
15.2 Deferred premiums, agents' balances and installments booked but deferred and not yet due (including \$ earned but unbilled premiums)			0	0
15.3 Accrued retrospective premiums (\$) and contracts subject to redetermination (\$)			0	0
16. Reinsurance:				
16.1 Amounts recoverable from reinsurers			0	0
16.2 Funds held by or deposited with reinsured companies			0	0
16.3 Other amounts receivable under reinsurance contracts	200,000		200,000	200,000
17. Amounts receivable relating to uninsured plans			0	0
18.1 Current federal and foreign income tax recoverable and interest thereon			0	47,631
18.2 Net deferred tax asset	13		13	13
19. Guaranty funds receivable or on deposit			0	0
20. Electronic data processing equipment and software			0	0
21. Furniture and equipment, including health care delivery assets (\$)			0	0
22. Net adjustment in assets and liabilities due to foreign exchange rates			0	0
23. Receivables from parent, subsidiaries and affiliates			0	0
24. Health care (\$) and other amounts receivable			0	0
25. Aggregate write-ins for other than invested assets	94,950	0	94,950	159,540
26. Total assets excluding Separate Accounts, Segregated Accounts and Protected Cell Accounts (Lines 12 to 25)	53,372,558	0	53,372,558	58,832,280
27. From Separate Accounts, Segregated Accounts and Protected Cell Accounts			0	0
28. Total (Lines 26 and 27)	53,372,558	0	53,372,558	58,832,280
DETAILS OF WRITE-INS				
1101.				
1102.				
1103.				
1198. Summary of remaining write-ins for Line 11 from overflow page	0	0	0	0
1199. Totals (Lines 1101 thru 1103 plus 1198)(Line 11 above)	0	0	0	0
2501. Accounts Receivable	94,950		94,950	159,540
2502.				
2503.				
2598. Summary of remaining write-ins for Line 25 from overflow page	0	0	0	0
2599. Totals (Lines 2501 thru 2503 plus 2598)(Line 25 above)	94,950	0	94,950	159,540

ANNUAL STATEMENT FOR THE YEAR 2022 OF THE ProTucket Insurance Company

LIABILITIES, SURPLUS AND OTHER FUNDS

	1 Current Year	2 Prior Year
1. Losses (Part 2A, Line 35, Column 8)		
2. Reinsurance payable on paid losses and loss adjustment expenses (Schedule F, Part 1, Column 6)	0	0
3. Loss adjustment expenses (Part 2A, Line 35, Column 9)		
4. Commissions payable, contingent commissions and other similar charges		
5. Other expenses (excluding taxes, licenses and fees)	4,450	4,450
6. Taxes, licenses and fees (excluding federal and foreign income taxes)		
7.1 Current federal and foreign income taxes (including \$ on realized capital gains (losses))	67,257	
7.2 Net deferred tax liability		
8. Borrowed money \$ and interest thereon \$		
9. Unearned premiums (Part 1A, Line 38, Column 5) (after deducting unearned premiums for ceded reinsurance of \$0 and including warranty reserves of \$ and accrued accident and health experience rating refunds including \$0 for medical loss ratio rebate per the Public Health Service Act)		
10. Advance premium		
11. Dividends declared and unpaid:		
11.1 Stockholders		
11.2 Policyholders		
12. Ceded reinsurance premiums payable (net of ceding commissions)	0	0
13. Funds held by company under reinsurance treaties (Schedule F, Part 3, Column 20)	0	0
14. Amounts withheld or retained by company for account of others		
15. Remittances and items not allocated		
16. Provision for reinsurance (including \$0 certified) (Schedule F, Part 3, Column 78)	0	0
17. Net adjustments in assets and liabilities due to foreign exchange rates		
18. Drafts outstanding		
19. Payable to parent, subsidiaries and affiliates		
20. Derivatives	0	0
21. Payable for securities		
22. Payable for securities lending		
23. Liability for amounts held under uninsured plans		
24. Capital notes \$ and interest thereon \$		
25. Aggregate write-ins for liabilities	13,865,221	19,779,703
26. Total liabilities excluding protected cell liabilities (Lines 1 through 25)	13,936,928	19,784,153
27. Protected cell liabilities		
28. Total liabilities (Lines 26 and 27)	13,936,928	19,784,153
29. Aggregate write-ins for special surplus funds	0	0
30. Common capital stock	2,500,000	2,500,000
31. Preferred capital stock		
32. Aggregate write-ins for other than special surplus funds	0	0
33. Surplus notes	0	0
34. Gross paid in and contributed surplus	35,702,000	35,702,000
35. Unassigned funds (surplus)	1,233,630	846,127
36. Less treasury stock, at cost:		
36.1 shares common (value included in Line 30 \$)		
36.2 shares preferred (value included in Line 31 \$)		
37. Surplus as regards policyholders (Lines 29 to 35, less 36) (Page 4, Line 39)	39,435,630	39,048,127
38. TOTALS (Page 2, Line 28, Col. 3)	53,372,558	58,832,280
DETAILS OF WRITE-INS		
2501. Accrued Expenses	94,950	159,540
2502. Retroactive Reinsurance Assumed	14,986,427	16,632,573
2503. Retroactive Reinsurance Ceded	(14,986,427)	(16,632,573)
2598. Summary of remaining write-ins for Line 25 from overflow page	13,770,271	19,620,163
2599. Totals (Lines 2501 thru 2503 plus 2598)(Line 25 above)	13,865,221	19,779,703
2901.		
2902.		
2903.		
2998. Summary of remaining write-ins for Line 29 from overflow page	0	0
2999. Totals (Lines 2901 thru 2903 plus 2998)(Line 29 above)	0	0
3201.		
3202.		
3203.		
3298. Summary of remaining write-ins for Line 32 from overflow page	0	0
3299. Totals (Lines 3201 thru 3203 plus 3298)(Line 32 above)	0	0

ANNUAL STATEMENT FOR THE YEAR 2022 OF THE ProTucket Insurance Company

STATEMENT OF INCOME

	1 Current Year	2 Prior Year
UNDERWRITING INCOME		
1. Premiums earned (Part 1, Line 35, Column 4).....		
DEDUCTIONS:		
2. Losses incurred (Part 2, Line 35, Column 7)		
3. Loss adjustment expenses incurred (Part 3, Line 25, Column 1)	0	0
4. Other underwriting expenses incurred (Part 3, Line 25, Column 2)	380,227	233,532
5. Aggregate write-ins for underwriting deductions	(106,598)	(233,532)
6. Total underwriting deductions (Lines 2 through 5)	273,629	0
7. Net income of protected cells		
8. Net underwriting gain (loss) (Line 1 minus Line 6 plus Line 7)	(273,629)	0
INVESTMENT INCOME		
9. Net investment income earned (Exhibit of Net Investment Income, Line 17)	489,819	1,988
10. Net realized capital gains (losses) less capital gains tax of \$ (Exhibit of Capital Gains (Losses))		
11. Net investment gain (loss) (Lines 9 + 10)	489,819	1,988
OTHER INCOME		
12. Net gain (loss) from agents' or premium balances charged off (amount recovered \$ amount charged off \$)	0	0
13. Finance and service charges not included in premiums		
14. Aggregate write-ins for miscellaneous income	274,320	0
15. Total other income (Lines 12 through 14)	274,320	0
16. Net income before dividends to policyholders, after capital gains tax and before all other federal and foreign income taxes (Lines 8 + 11 + 15)	490,510	1,988
17. Dividends to policyholders		
18. Net income, after dividends to policyholders, after capital gains tax and before all other federal and foreign income taxes (Line 16 minus Line 17)	490,510	1,988
19. Federal and foreign income taxes incurred	103,007	430
20. Net income (Line 18 minus Line 19)(to Line 22)	387,503	1,558
CAPITAL AND SURPLUS ACCOUNT		
21. Surplus as regards policyholders, December 31 prior year (Page 4, Line 39, Column 2)	39,048,127	39,046,556
22. Net income (from Line 20)	387,503	1,558
23. Net transfers (to) from Protected Cell accounts		
24. Change in net unrealized capital gains or (losses) less capital gains tax of \$		
25. Change in net unrealized foreign exchange capital gain (loss)		
26. Change in net deferred income tax		13
27. Change in nonadmitted assets (Exhibit of Nonadmitted Assets, Line 28, Col. 3)		
28. Change in provision for reinsurance (Page 3, Line 16, Column 2 minus Column 1)	0	0
29. Change in surplus notes		
30. Surplus (contributed to) withdrawn from protected cells		
31. Cumulative effect of changes in accounting principles		
32. Capital changes:		
32.1 Paid in		
32.2 Transferred from surplus (Stock Dividend)		
32.3 Transferred to surplus		
33. Surplus adjustments:		
33.1 Paid in	0	0
33.2 Transferred to capital (Stock Dividend)		
33.3 Transferred from capital		
34. Net remittances from or (to) Home Office		
35. Dividends to stockholders		
36. Change in treasury stock (Page 3, Lines 36.1 and 36.2, Column 2 minus Column 1)	0	0
37. Aggregate write-ins for gains and losses in surplus	0	0
38. Change in surplus as regards policyholders for the year (Lines 22 through 37)	387,503	1,571
39. Surplus as regards policyholders, December 31 current year (Line 21 plus Line 38) (Page 3, Line 37)	39,435,630	39,048,127
DETAILS OF WRITE-INS		
0501. Contra Expenses	(106,598)	(233,532)
0502.		
0503.		
0598. Summary of remaining write-ins for Line 5 from overflow page	0	0
0599. Totals (Lines 0501 thru 0503 plus 0598)(Line 5 above)	(106,598)	(233,532)
1401. Retroactive Reinsurance Assumed Loss	846,433	799,010
1402. Retroactive Reinsurance Ceded Gain	(846,433)	(799,010)
1403. Other Income	274,320	
1498. Summary of remaining write-ins for Line 14 from overflow page	0	0
1499. Totals (Lines 1401 thru 1403 plus 1498)(Line 14 above)	274,320	0
3701.		0
3702.		
3703.		
3798. Summary of remaining write-ins for Line 37 from overflow page	0	0
3799. Totals (Lines 3701 thru 3703 plus 3798)(Line 37 above)	0	0

ANNUAL STATEMENT FOR THE YEAR 2022 OF THE ProTucket Insurance Company

CASH FLOW

	1	2
	Current Year	Prior Year
Cash from Operations		
1. Premiums collected net of reinsurance	0	0
2. Net investment income	489,883	7,860
3. Miscellaneous income	274,320	0
4. Total (Lines 1 through 3)	764,203	7,860
5. Benefit and loss related payments	0	0
6. Net transfers to Separate Accounts, Segregated Accounts and Protected Cell Accounts	0	0
7. Commissions, expenses paid and aggregate write-ins for deductions	273,629	0
8. Dividends paid to policyholders	0	0
9. Federal and foreign income taxes paid (recovered) net of \$ tax on capital gains (losses)	(11,881)	0
10. Total (Lines 5 through 9)	261,748	0
11. Net cash from operations (Line 4 minus Line 10)	502,455	7,860
Cash from Investments		
12. Proceeds from investments sold, matured or repaid:		
12.1 Bonds	300,000	201,000
12.2 Stocks	0	0
12.3 Mortgage loans	0	0
12.4 Real estate	0	0
12.5 Other invested assets	0	0
12.6 Net gains or (losses) on cash, cash equivalents and short-term investments	0	0
12.7 Miscellaneous proceeds	0	0
12.8 Total investment proceeds (Lines 12.1 to 12.7)	300,000	201,000
13. Cost of investments acquired (long-term only):		
13.1 Bonds	457,918	306,033
13.2 Stocks	0	0
13.3 Mortgage loans	0	0
13.4 Real estate	0	0
13.5 Other invested assets	0	0
13.6 Miscellaneous applications	0	0
13.7 Total investments acquired (Lines 13.1 to 13.6)	457,918	306,033
14. Net increase (decrease) in contract loans and premium notes	0	0
15. Net cash from investments (Line 12.8 minus Line 13.7 minus Line 14)	(157,918)	(105,033)
Cash from Financing and Miscellaneous Sources		
16. Cash provided (applied):		
16.1 Surplus notes, capital notes	0	0
16.2 Capital and paid in surplus, less treasury stock	0	0
16.3 Borrowed funds	0	0
16.4 Net deposits on deposit-type contracts and other insurance liabilities	0	0
16.5 Dividends to stockholders	0	0
16.6 Other cash provided (applied)	(5,849,892)	(3,482,241)
17. Net cash from financing and miscellaneous sources (Lines 16.1 to 16.4 minus Line 16.5 plus Line 16.6)	(5,849,892)	(3,482,241)
RECONCILIATION OF CASH, CASH EQUIVALENTS AND SHORT-TERM INVESTMENTS		
18. Net change in cash, cash equivalents and short-term investments (Line 11, plus Lines 15 and 17)	(5,505,355)	(3,579,414)
19. Cash, cash equivalents and short-term investments:		
19.1 Beginning of year	58,119,390	61,698,804
19.2 End of period (Line 18 plus Line 19.1)	52,614,035	58,119,390

Note: Supplemental disclosures of cash flow information for non-cash transactions:

--	--	--

Underwriting and Investment Exhibit - Part 1 - Premiums Earned

N O N E

Underwriting and Investment Exhibit - Part 1A - Recapitulation of all Premiums

N O N E

Underwriting and Investment Exhibit - Part 1B - Premiums Written

N O N E

Underwriting and Investment Exhibit - Part 2 - Losses Paid and Incurred

N O N E

Underwriting and Investment Exhibit - Part 2A - Unpaid Losses and Loss Adjustment Expenses

N O N E

ANNUAL STATEMENT FOR THE YEAR 2022 OF THE ProTucket Insurance Company

UNDERWRITING AND INVESTMENT EXHIBIT

PART 3 - EXPENSES

	1	2	3	4
	Loss Adjustment Expenses	Other Underwriting Expenses	Investment Expenses	Total
1. Claim adjustment services:				
1.1 Direct				0
1.2 Reinsurance assumed				0
1.3 Reinsurance ceded				0
1.4 Net claim adjustment service (1.1 + 1.2 - 1.3)	0	0	0	0
2. Commission and brokerage:				
2.1 Direct excluding contingent				0
2.2 Reinsurance assumed, excluding contingent				0
2.3 Reinsurance ceded, excluding contingent				0
2.4 Contingent - direct				0
2.5 Contingent - reinsurance assumed				0
2.6 Contingent - reinsurance ceded				0
2.7 Policy and membership fees				0
2.8 Net commission and brokerage (2.1 + 2.2 - 2.3 + 2.4 + 2.5 - 2.6 + 2.7) ..	0	0	0	0
3. Allowances to managers and agents				0
4. Advertising				0
5. Boards, bureaus and associations		11,160		11,160
6. Surveys and underwriting reports				0
7. Audit of assureds' records				0
8. Salary and related items:				
8.1 Salaries				0
8.2 Payroll taxes				0
9. Employee relations and welfare				0
10. Insurance				0
11. Directors' fees				0
12. Travel and travel items				0
13. Rent and rent items				0
14. Equipment				0
15. Cost or depreciation of EDP equipment and software		5,519		5,519
16. Printing and stationery		2,226		2,226
17. Postage, telephone and telegraph, exchange and express				0
18. Legal and auditing		264,161	17,967	282,128
19. Totals (Lines 3 to 18)	0	283,066	17,967	301,033
20. Taxes, licenses and fees:				
20.1 State and local insurance taxes deducting guaranty association credits of \$				0
20.2 Insurance department licenses and fees		97,161		97,161
20.3 Gross guaranty association assessments				0
20.4 All other (excluding federal and foreign income and real estate)				0
20.5 Total taxes, licenses and fees (20.1 + 20.2 + 20.3 + 20.4)	0	97,161	0	97,161
21. Real estate expenses				0
22. Real estate taxes				0
23. Reimbursements by uninsured plans				0
24. Aggregate write-ins for miscellaneous expenses	0	0	0	0
25. Total expenses incurred	0	380,227	17,967 (a)	398,194
26. Less unpaid expenses - current year		94,950	4,450	99,400
27. Add unpaid expenses - prior year		159,540	4,450	163,990
28. Amounts receivable relating to uninsured plans, prior year				0
29. Amounts receivable relating to uninsured plans, current year				0
30. TOTAL EXPENSES PAID (Lines 25 - 26 + 27 - 28 + 29)	0	444,817	17,967	462,784
DETAILS OF WRITE-INS				
2401.				
2402.				
2403.				
2498. Summary of remaining write-ins for Line 24 from overflow page	0	0	0	0
2499. Totals (Lines 2401 thru 2403 plus 2498)(Line 24 above)	0	0	0	0

(a) Includes management fees of \$ to affiliates and \$ to non-affiliates.

ANNUAL STATEMENT FOR THE YEAR 2022 OF THE ProTucket Insurance Company

EXHIBIT OF NET INVESTMENT INCOME

	1	2
	Collected During Year	Earned During Year
1. U.S. Government bonds	(a) 5,398	5,398
1.1 Bonds exempt from U.S. tax	(a)	
1.2 Other bonds (unaffiliated)	(a)	
1.3 Bonds of affiliates	(a)	
2.1 Preferred stocks (unaffiliated)	(b)	
2.11 Preferred stocks of affiliates	(b)	
2.2 Common stocks (unaffiliated)		
2.21 Common stocks of affiliates		
3. Mortgage loans	(c)	
4. Real estate	(d)	
5. Contract loans		
6. Cash, cash equivalents and short-term investments	(e) 502,388	502,388
7. Derivative instruments	(f)	
8. Other invested assets		
9. Aggregate write-ins for investment income	0	0
10. Total gross investment income	502,388	507,786
11. Investment expenses		(g) 17,967
12. Investment taxes, licenses and fees, excluding federal income taxes		(g) 0
13. Interest expense		(h)
14. Depreciation on real estate and other invested assets		(i)
15. Aggregate write-ins for deductions from investment income		0
16. Total deductions (Lines 11 through 15)		17,967
17. Net investment income (Line 10 minus Line 16)		489,819
DETAILS OF WRITE-INS		
0901.		
0902.		
0903.		
0998. Summary of remaining write-ins for Line 9 from overflow page	0	0
0999. Totals (Lines 0901 thru 0903 plus 0998) (Line 9, above)	0	0
1501.		
1502.		
1503.		
1598. Summary of remaining write-ins for Line 15 from overflow page		0
1599. Totals (Lines 1501 thru 1503 plus 1598) (Line 15, above)		0

- (a) Includes \$ 5,398 accrual of discount less \$ 3,594 amortization of premium and less \$ 0 paid for accrued interest on purchases.
- (b) Includes \$ 0 accrual of discount less \$ 0 amortization of premium and less \$ 0 paid for accrued dividends on purchases.
- (c) Includes \$ 0 accrual of discount less \$ 0 amortization of premium and less \$ paid for accrued interest on purchases.
- (d) Includes \$ for company's occupancy of its own buildings; and excludes \$ interest on encumbrances.
- (e) Includes \$ accrual of discount less \$ amortization of premium and less \$ paid for accrued interest on purchases.
- (f) Includes \$ accrual of discount less \$ amortization of premium.
- (g) Includes \$ investment expenses and \$ investment taxes, licenses and fees, excluding federal income taxes, attributable to segregated and Separate Accounts.
- (h) Includes \$ interest on surplus notes and \$ interest on capital notes.
- (i) Includes \$ 0 depreciation on real estate and \$ depreciation on other invested assets.

EXHIBIT OF CAPITAL GAINS (LOSSES)

	1	2	3	4	5
	Realized Gain (Loss) On Sales or Maturity	Other Realized Adjustments	Total Realized Capital Gain (Loss) (Columns 1 + 2)	Change in Unrealized Capital Gain (Loss)	Change in Unrealized Foreign Exchange Capital Gain (Loss)
1. U.S. Government bonds					
1.1 Bonds exempt from U.S. tax					
1.2 Other bonds (unaffiliated)					
1.3 Bonds of affiliates					
2.1 Preferred stocks (unaffiliated)					
2.11 Preferred stocks of affiliates					
2.2 Common stocks (unaffiliated)					
2.21 Common stocks of affiliates					
3. Mortgage loans					
4. Real estate					
5. Contract loans					
6. Cash, cash equivalents and short-term investments					
7. Derivative instruments					
8. Other invested assets					
9. Aggregate write-ins for capital gains (losses)					
10. Total capital gains (losses)					
NONE					
DETAILS OF WRITE-INS					
0901.					
0902.					
0903.					
0998. Summary of remaining write-ins for Line 9 from overflow page					
0999. Totals (Lines 0901 thru 0903 plus 0998) (Line 9, above)					

Exhibit 1 - Analysis of Non-Admitted Assets and Related Items

N O N E

NOTES TO FINANCIAL STATEMENTS

NOTE 1 Summary of Significant Accounting Policies and Going Concern

A. Accounting Practices

The financial statements of ProTucket Insurance Company are presented on the basis of accounting practices prescribed or permitted by the Rhode Island Insurance Department.

The Rhode Island Insurance Department recognizes only statutory accounting practices prescribed or permitted by the State of Rhode Island for determining and reporting the financial condition and results of operations of an insurance company, for determining its solvency under the Rhode Island Insurance Law.

The National Association of Insurance Commissioners' (NAIC) Accounting Practices and Procedures Manual (NAIC SAP) has been adopted as a component of prescribed or permitted practices by the state of Rhode Island. The state has adopted certain prescribed accounting practices that differ from those found in NAIC SAP. Specifically, 1) goodwill arising from the purchase of a subsidiary, controlled or affiliated entity is written off directly to surplus in the year it originates by Rhode Island domiciled companies. In NAIC SAP, goodwill in amounts not to exceed 10% of an reporting entity's capital and surplus may be capitalized and all amounts of goodwill are amortized to unrealized gains and losses on investments over periods not to exceed 10 years, and, 2) 100% of all fixed assets are admitted by Rhode Island domiciled companies. In NAIC SAP, fixed assets are not admitted. The Commissioner of Insurance has the right to permit other specific practices that deviate from prescribed practices.

A reconciliation of the Company's net income and capital and surplus between NAIC SAP and practices prescribed and permitted by the State of Rhode Island is shown below:

	SSAP #	F/S Page	F/S Line #		2022		2021
NET INCOME							
(1) State basis (Page 4, Line 20, Columns 1 & 2)	XXX	XXX	XXX	\$	387,503	\$	1,558
(2) State Prescribed Practices that are an increase/ (decrease) from NAIC SAP:							
(3) State Permitted Practices that are an increase/(decrease) from NAIC SAP:							
(4) NAIC SAP (1-2-3=4)	XXX	XXX	XXX	\$	387,503	\$	1,558
SURPLUS							
(5) State basis (Page 3, Line 37, Columns 1 & 2)	XXX	XXX	XXX	\$	39,435,630	\$	39,048,127
(6) State Prescribed Practices that are an increase/(decrease) from NAIC SAP:							
(7) State Permitted Practices that are an increase/(decrease) from NAIC SAP:							
(8) NAIC SAP (5-6-7=8)	XXX	XXX	XXX	\$	39,435,630	\$	39,048,127

B. Use of Estimates in the Preparation of the Financial Statements

The preparation of financial statements is in conformity with Statutory Accounting Principles requires management to make estimates and assumptions that affect the reported amounts of assets and liabilities. It also requires disclosure of contingent assets and liabilities at the date of the financial statements and the reported amounts of revenue and expenses during the period. Actual results could differ from those estimates.

C. Accounting Policy

Premiums are earned over the terms of the related insurance policies and reinsurance contracts. Unearned premium reserves are established to cover the unexpired portion of premiums written. Such reserves are computed by pro rata methods for direct business and are based on reports received from ceding companies for reinsurance.

Expenses incurred in connection with acquiring new insurance business, including such acquisition costs as sales commissions, are charged to operations as incurred. Expenses incurred are reduced for ceding allowances received or receivable.

In addition, the company uses the following accounting policies

(1)Basis for Short-Term Investments

Short-term investments are stated at amortized cost.

(2)Basis for Bonds and Amortization Schedule

Bonds not backed by other loans are stated at amortized cost using the interest method.

(3)Basis for Common Stocks

Common Stocks are stated at market except that investments in stocks of uncombined subsidiaries and affiliates in which the Company has an interest of 20% or more are carried on the equity basis.

(4)Basis for Preferred Stocks

Preferred stocks are stated in accordance with the guidance provided in SSAP No. 32.

(5)Basis for Mortgage Loans

Mortgage loans on real estate are stated at the aggregate carrying value less accrued interest

(6)Basis for Loan-Backed Securities and Adjustment Methodology

Loan-backed securities are stated at either amortized cost or the lower of amortized cost or fair value. The retrospective adjustment method is used to value all securities except for interest only securities or securities where the yield had become negative, which are valued using the prospective method.

(7)Accounting Policies for Investments in Subsidiaries, Controlled and Affiliated Entities Not Applicable

(8)Accounting Policies for Investments in Joint Ventures, Partnerships and Limited Liability Entities Not Applicable

(9)Accounting Policies for Derivatives All derivatives are stated at fair value.

(10)Anticipated Investment Income Used in Premium Deficiency Calculation

The Company anticipates investment income as a factor in the premium deficiency calculation, in accordance with SSAP No. 53-Property-Casualty Contracts - Premiums.

(11)Management's Policies and Methodologies for Estimating Liabilities for Losses and Loss/Claim Adjustment Expenses

Unpaid losses and loss adjustment expenses include an amount determined from individual case estimates and loss reports and an amount, based on past experience, for losses incurred but not reported. Such liabilities are necessarily based on assumptions and estimates and while management believes the amount is adequate, the ultimate liability may be in excess of or less than the amount provided. The methods for making such estimates and for establishing the resulting liabilities are continually reviewed and any adjustments are reflected in the period determined.

(12)Changes in the Capitalization Policy and Predefined Thresholds from Prior Period The Company has not modified its capitalization policy from the prior period.

(13)Method Used to Estimate Pharmaceutical Rebate Receivables

Not Applicable

D. Going Concern

Not Applicable

NOTE 2 Accounting Changes and Corrections of Errors

The Company has no correction of errors from prior year to report.

NOTES TO FINANCIAL STATEMENTS

NOTE 3 Business Combinations and Goodwill

Not Applicable

NOTE 4 Discontinued Operations

Not Applicable

NOTE 5 Investments

- A. Mortgage Loans, including Mezzanine Real Estate Loans
Not Applicable
- B. Debt Restructuring
Not Applicable
- C. Reverse Mortgages
Not Applicable
- D. Loan-Backed Securities
Not Applicable
- E. Dollar Repurchase Agreements and/or Securities Lending Transactions
Not Applicable
- F. Repurchase Agreements Transactions Accounted for as Secured Borrowing
Not Applicable
- G. Reverse Repurchase Agreements Transactions Accounted for as Secured Borrowing
Not Applicable
- H. Repurchase Agreements Transactions Accounted for as a Sale
Not Applicable
- I. Reverse Repurchase Agreements Transactions Accounted for as a Sale
Not Applicable
- J. Real Estate
Not Applicable
- K. Low Income Housing tax Credits (LIHTC)
Not Applicable
- L. Restricted Assets

1. Restricted Assets (Including Pledged)

	Gross (Admitted & Nonadmitted) Restricted						
	Current Year					6	7
	1	2	3	4	5		
Restricted Asset Category	Total General Account (G/A)	G/A Supporting Protected Cell Account Activity (a)	Total Protected Cell Account Restricted Assets	Protected Cell Account Assets Supporting G/A Activity (b)	Total (1 plus 3)	Total From Prior Year	Increase/ (Decrease) (5 minus 6)
a. Subject to contractual obligation for which liability is not shown					\$ -	\$ -	\$ -
b. Collateral held under security lending agreements					\$ -	\$ -	\$ -
c. Subject to repurchase agreements					\$ -	\$ -	\$ -
d. Subject to reverse repurchase agreements					\$ -	\$ -	\$ -
e. Subject to dollar repurchase agreements					\$ -	\$ -	\$ -
f. Subject to dollar reverse repurchase agreements					\$ -	\$ -	\$ -
g. Placed under option contracts					\$ -	\$ -	\$ -
h. Letter stock or securities restricted as to sale - excluding FHLB capital stock					\$ -	\$ -	\$ -
i. FHLB capital stock					\$ -	\$ -	\$ -
j. On deposit with states	\$ 4,261,969				\$ 4,261,969	\$ 4,070,773	\$ 191,196
k. On deposit with other regulatory bodies					\$ -	\$ -	\$ -
l. Pledged collateral to FHLB (including assets backing funding agreements)					\$ -	\$ -	\$ -
m. Pledged as collateral not captured in other categories	\$13,762,706				\$13,762,706	\$19,606,406	\$(5,843,700)
n. Other restricted assets					\$ -	\$ -	\$ -
o. Total Restricted Assets (Sum of a through n)	\$18,024,675	\$ -	\$ -	\$ -	\$18,024,675	\$23,677,179	\$(5,652,504)

(a) Subset of Column 1

(b) Subset of Column 3

NOTES TO FINANCIAL STATEMENTS

Restricted Asset Category	Current Year			
	8	9	Percentage	
			10	11
	Total Non-admitted Restricted	Total Admitted Restricted (5 minus 8)	Gross (Admitted & Non-admitted) Restricted to Total Assets (c)	Admitted Restricted to Total Admitted Assets (d)
a. Subject to contractual obligation for which liability is not shown	\$ -	\$ -	0.000%	0.000%
b. Collateral held under security lending agreements	\$ -	\$ -	0.000%	0.000%
c. Subject to repurchase agreements	\$ -	\$ -	0.000%	0.000%
d. Subject to reverse repurchase agreements	\$ -	\$ -	0.000%	0.000%
e. Subject to dollar repurchase agreements	\$ -	\$ -	0.000%	0.000%
f. Subject to dollar reverse repurchase agreements	\$ -	\$ -	0.000%	0.000%
g. Placed under option contracts	\$ -	\$ -	0.000%	0.000%
h. Letter stock or securities restricted as to sale - excluding FHLB capital stock	\$ -	\$ -	0.000%	0.000%
i. FHLB capital stock	\$ -	\$ -	0.000%	0.000%
j. On deposit with states	\$ 4,261,969	\$ -	7.985%	7.985%
k. On deposit with other regulatory bodies	\$ -	\$ -	0.000%	0.000%
l. Pledged collateral to FHLB (including assets backing funding agreements)	\$ -	\$ -	0.000%	0.000%
m. Pledged as collateral not captured in other categories	\$ 13,762,706	\$ -	25.786%	25.786%
n. Other restricted assets	\$ -	\$ -	0.000%	0.000%
o. Total Restricted Assets (Sum of a through n)	\$ -	\$ 18,024,675	33.771%	33.771%

(c) Column 5 divided by Asset Page, Column 1, Line 28

(d) Column 9 divided by Asset Page, Column 3, Line 28

2. Detail of Assets Pledged as Collateral Not Captured in Other Categories (Contracts That Share Similar Characteristics, Such as Reinsurance and Derivatives, Are Reported in the Aggregate)

Description of Assets	Gross (Admitted & Nonadmitted) Restricted							8	Percentage	
	Current Year					6	7		9	10
	1	2	3	4	5					
	Total General Account (G/A)	G/A Supporting Protected Cell Account Activity (a)	Total Protected Cell Account (S/A) Restricted Assets	Protected Cell Account Assets Supporting G/A Activity (b)	Total (1 plus 3)	Total From Prior Year	Increase/ (Decrease) (5 minus 6)	Total Current Year Admitted Restricted	Gross (Admitted & Nonadmitted) Restricted to Total Assets	Admitted Restricted to Total Admitted Assets
Zurich American	\$11,860,831				\$11,860,831	\$16,362,333	\$(4,501,502)	\$11,860,831	22.223%	22.223%
Amer Guarantee	\$ 1,701,875				\$ 1,701,875	\$ 3,044,073	\$(1,342,198)	\$ 1,701,875	3.189%	3.189%
Zurich American of Illinois	\$ 200,000				\$ 200,000	\$ 200,000	\$ -	\$ 200,000	0.375%	0.375%
Total (c)	\$13,762,706	\$ -	\$ -	\$ -	\$13,762,706	\$19,606,406	\$(5,843,700)	\$13,762,706	25.786%	25.786%

(a) Subset of column 1

(b) Subset of column 3

(c) Total Line for Columns 1 through 7 should equal 5L(1)m Columns 1 through 7 respectively and Total Line for Columns 8 through 10 should equal 5L(1)m Columns 9 through 11 respectively.

3. Detail of Other Restricted Assets (Contracts That Share Similar Characteristics, Such as Reinsurance and Derivatives, Are Reported in the Aggregate)
Not Applicable
4. Collateral Received and Reflected as Assets Within the Reporting Entity's Financial Statements
Not Applicable

M. Working Capital Finance Investments
Not Applicable

N. Offsetting and Netting of Assets and Liabilities
Not Applicable

O. 5GI Securities
Not Applicable

P. Short Sales
Not Applicable

Q. Prepayment Penalty and Acceleration Fees
Not Applicable

R. Reporting Entity's Share of Cash Pool by Asset Type

Asset Type	Percent Share
(1) Cash	13.6%
(2) Cash Equivalents	86.4%
(3) Short-Term Investments	
(4) Total	100.0%

NOTES TO FINANCIAL STATEMENTS

NOTE 6 Joint Ventures, Partnerships and Limited Liability Companies

Not Applicable

NOTE 7 Investment Income

Not Applicable

NOTE 8 Derivative Instruments

Not Applicable

NOTE 9 Income Taxes

A. The components of the net deferred tax asset/(liability) at the end of current period are as follows:

1.

	As of End of Current Period			12/31/2021			Change		
	(1) Ordinary	(2) Capital	(3) (Col. 1 + 2) Total	(4) Ordinary	(5) Capital	(6) (Col. 4 + 5) Total	(7) (Col. 1 - 4) Ordinary	(8) (Col. 2 - 5) Capital	(9) (Col. 7 + 8) Total
(a) Gross Deferred Tax Assets		\$ 13	\$ 13		\$ 13	\$ 13	\$ -	\$ -	\$ -
(b) Statutory Valuation Allowance Adjustment			\$ -			\$ -	\$ -	\$ -	\$ -
(c) Adjusted Gross Deferred Tax Assets (1a - 1b)	\$ -	\$ 13	\$ 13	\$ -	\$ 13	\$ 13	\$ -	\$ -	\$ -
(d) Deferred Tax Assets Nonadmitted			\$ -			\$ -	\$ -	\$ -	\$ -
(e) Subtotal Net Admitted Deferred Tax Asset (1c - 1d)	\$ -	\$ 13	\$ 13	\$ -	\$ 13	\$ 13	\$ -	\$ -	\$ -
(f) Deferred Tax Liabilities			\$ -			\$ -	\$ -	\$ -	\$ -
(g) Net Admitted Deferred Tax Asset/(Net Deferred Tax Liability) (1e - 1f)	\$ -	\$ 13	\$ 13	\$ -	\$ 13	\$ 13	\$ -	\$ -	\$ -

2.

	As of End of Current Period			12/31/2021			Change		
	(1) Ordinary	(2) Capital	(3) (Col. 1 + 2) Total	(4) Ordinary	(5) Capital	(6) (Col. 4 + 5) Total	(7) (Col. 1 - 4) Ordinary	(8) (Col. 2 - 5) Capital	(9) (Col. 7 + 8) Total
Admission Calculation Components SSAP No. 101									
(a) Federal Income Taxes Paid In Prior Years Recoverable Through Loss Carrybacks			\$ -			\$ -	\$ -	\$ -	\$ -
(b) Adjusted Gross Deferred Tax Assets Expected To Be Realized (Excluding The Amount Of Deferred Tax Assets From 2(a) above) After Application of the Threshold Limitation. (The Lesser of 2(b)1 and 2(b)2 Below)		\$ 13	\$ 13		\$ 13	\$ 13	\$ -	\$ -	\$ -
1. Adjusted Gross Deferred Tax Assets Expected to be Realized Following the Balance Sheet Date.		\$ 13	\$ 13		\$ 13	\$ 13	\$ -	\$ -	\$ -
2. Adjusted Gross Deferred Tax Assets Allowed per Limitation Threshold.	XXX	XXX	\$ 3,948,399	XXX	XXX	\$ 3,904,813	XXX	XXX	\$ 43,586
(c) Adjusted Gross Deferred Tax Assets (Excluding The Amount Of Deferred Tax Assets From 2(a) and 2(b) above) Offset by Gross Deferred Tax Liabilities.			\$ -	\$ -		\$ -	\$ -	\$ -	\$ -
(d) Deferred Tax Assets Admitted as the result of application of SSAP No. 101. Total (2(a) + 2(b) + 2(c))	\$ -	\$ 13	\$ 13	\$ -	\$ 13	\$ 13	\$ -	\$ -	\$ -

3.

	2022	2021
a. Ratio Percentage Used To Determine Recovery Period And Threshold Limitation Amount.	37870.800%	16112.300%
b. Amount Of Adjusted Capital And Surplus Used To Determine Recovery Period And Threshold Limitation In 2(b)2 Above.	\$ 39,435,630	\$ 39,048,127

4.

	As of End of Current Period		12/31/2021		Change	
	(1) Ordinary	(2) Capital	(3) Ordinary	(4) Capital	(5) (Col. 1 - 3) Ordinary	(6) (Col. 2 - 4) Capital
Impact of Tax Planning Strategies:						
(a) Determination of adjusted gross deferred tax assets and net admitted deferred tax assets, by tax character as a percentage.						
1. Adjusted Gross DTAs amount from Note 9A1(c)	\$ -	\$ 13	\$ -	\$ 13	\$ -	\$ -
2. Percentage of adjusted gross DTAs by tax character attributable to the impact of tax planning strategies					0.000%	0.000%
3. Net Admitted Adjusted Gross DTAs amount from Note 9A1(e)	\$ -	\$ 13	\$ -	\$ 13	\$ -	\$ -
4. Percentage of net admitted adjusted gross DTAs by tax character admitted because of the impact of tax planning strategies					0.000%	0.000%

b. Do the Company's tax-planning strategies include the use of reinsurance?

Yes [X] No []

NOTES TO FINANCIAL STATEMENTS

B. Deferred Tax Liabilities Not Recognized
Not applicable

C. Current income taxes incurred consist of the following major components:

	(1) As of End of Current Period	(2) 12/31/2021	(3) (Col. 1 - 2) Change
1. Current Income Tax			
(a) Federal	\$ 103,007	\$ 430	\$ 102,577
(b) Foreign			\$ -
(c) Subtotal (1a+1b)	\$ 103,007	\$ 430	\$ 102,577
(d) Federal income tax on net capital gains			\$ -
(e) Utilization of capital loss carry-forwards			\$ -
(f) Other			\$ -
(g) Federal and foreign income taxes incurred (1c+1d+1e+1f)	\$ 103,007	\$ 430	\$ 102,577
2. Deferred Tax Assets:			
(a) Ordinary:			
(1) Discounting of unpaid losses			\$ -
(2) Unearned premium reserve			\$ -
(3) Policyholder reserves			\$ -
(4) Investments			\$ -
(5) Deferred acquisition costs			\$ -
(6) Policyholder dividends accrual			\$ -
(7) Fixed assets			\$ -
(8) Compensation and benefits accrual			\$ -
(9) Pension accrual			\$ -
(10) Receivables - nonadmitted			\$ -
(11) Net operating loss carry-forward			\$ -
(12) Tax credit carry-forward			\$ -
(13) Other	\$ 13	\$ 13	\$ -
(99) Subtotal (sum of 2a1 through 2a13)	\$ 13	\$ 13	\$ -
(b) Statutory valuation allowance adjustment			\$ -
(c) Nonadmitted			\$ -
(d) Admitted ordinary deferred tax assets (2a99 - 2b - 2c)	\$ 13	\$ 13	\$ -
(e) Capital:			
(1) Investments			\$ -
(2) Net capital loss carry-forward			\$ -
(3) Real estate			\$ -
(4) Other			\$ -
(99) Subtotal (2e1+2e2+2e3+2e4)	\$ -	\$ -	\$ -
(f) Statutory valuation allowance adjustment			\$ -
(g) Nonadmitted			\$ -
(h) Admitted capital deferred tax assets (2e99 - 2f - 2g)	\$ -	\$ -	\$ -
(i) Admitted deferred tax assets (2d + 2h)	\$ 13	\$ 13	\$ -
3. Deferred Tax Liabilities:			
(a) Ordinary:			
(1) Investments			\$ -
(2) Fixed assets			\$ -
(3) Deferred and uncollected premium			\$ -
(4) Policyholder reserves			\$ -
(5) Other			\$ -
(99) Subtotal (3a1+3a2+3a3+3a4+3a5)	\$ -	\$ -	\$ -
(b) Capital:			
(1) Investments			\$ -
(2) Real estate			\$ -
(3) Other			\$ -
(99) Subtotal (3b1+3b2+3b3)	\$ -	\$ -	\$ -
(c) Deferred tax liabilities (3a99 + 3b99)	\$ -	\$ -	\$ -
4. Net deferred tax assets/liabilities (2i - 3c)	\$ 13	\$ 13	\$ -

D. Reconciliation of Federal Income Tax Rate to Actual Effective Rate Among the more significant book to tax adjustments were the following:

	Amount	Effective Tax Rate (%)
Permanent Differences:		
Provision computed at statutory rate	\$ 490,510	21.00%
Change in nonadmitted assets	\$ -	%
Proration of tax exempt investment income	\$ -	%
Tax exempt income deduction	\$ -	%
Dividends received deduction	\$ -	%
Disallowed travel and entertainment	\$ -	%
Other permanent differences	\$ 103,007	21.00%
Temporary Differences:		
Total ordinary DTAs	\$ -	%
Total ordinary DTLs	\$ -	%
Total capital DTAs	\$ -	%
Total Capital DTLs	\$ 103,007	21.00%
Other:		
Statutory valuation allowance adjustment	\$ -	%
Accrual adjustment-prior year	\$ -	%
Other permanent differences	\$ -	\$ 0
Totals	\$ 103,007	21.00%
Federal and foreign income taxes incurred	\$ -	%
Realized capital gains(losses) tax	\$ -	%
Change in net deferred income taxes	\$ -	%
Total statutory income taxes	\$ 103,007	21.01%

NOTES TO FINANCIAL STATEMENTS

E. Operating Loss Carry Forwards and Income Taxes Available for Recoupment

1. The amounts, origination dates and expiration dates of operating loss and tax credit carry forwards available for tax purposes:
Not Applicable

2. The following is income tax expense for current year and proceeding years that is available for recoupment in the event of future net losses:

Year	Amounts
2022	\$ 103,007
2021	\$ 417

3. The Company did not have any protective tax deposits under Section 6603 of the Internal Revenue Code

F. Consolidated Federal Income Tax Return

Not Applicable

G. Federal or Foreign Federal Income Tax Loss Contingencies:

The Company does not have any tax loss contingencies for which it is reasonably possible that the total liability will significantly increase within twelve months of the reporting date.

H. Repatriation Transition Tax (RTT)

Not Applicable

I. Alternative Minimum Tax (AMT) Credit

Not Applicable

NOTE 10 Information Concerning Parent, Subsidiaries, Affiliates and Other Related Parties

A. Nature of the Relationship Involved

Pro US Holdings, Inc, an insurance holding company domiciled in Delaware, and the Company's sole shareholder owns all outstanding shares of the Company's stock consisting of 1,000,000 shares of common stock with a par value of \$2.50. The sole shareholder of Pro US Holdings is Pro Global Holdings Ltd, an English private limited company.

B. Transactions

"Effective on June 30, 2018, and following approval by the Rhode Island Insurance Department, the Company's immediate parent, Pro US Holdings, Inc. ("PH") contributed \$35,200,000 additional paid in capital to the Company. The Company subsequently attributed \$35,000,000 of the additional paid in capital to a newly formed protected cell (designated as Protected Cell Enterprise), with the \$200,000 balance of the contribution being attributed to the Company's general account.

Effective on September 30, 2019, and following approval by the Rhode Island Insurance Department of a Plan of Closure, the Company closed out Protected Cell Enterprise. As a result of the closeout of Protected Cell Enterprise, all the assets and liabilities attributed to Protected Cell Enterprise prior to the closure of the protected cell are now those of the Company as reflected in this financial statement.

PH financed the capital contribution to the Company in large part through a \$35 million Senior Secured Note (to which the Company is not a party and has no obligations) issued pursuant to a Senior Secured Note Purchase Agreement between the Company and PH, on the one hand, and the holder of the \$35 million note on the other hand. Pursuant to the terms of the Senior Secured Note Purchase Agreement, and following approval by the Rhode Island Insurance Department, the capital stock of the Company was pledged as collateral to secure the obligations of PH under the Senior Secured Note Purchase Agreement. The pledge may not be exercised without the prior approval of the Rhode Island Insurance Department. Except as subsequently described in these Notes, the Company has no material obligations in relation to the Senior Secured Note Purchase Agreement, and in particular is not a debtor under that agreement.

C. Transactions with related party who are not reported on Schedule Y

Not Applicable

D. Amounts Due From or To Related Parties- Not Applicable

E. Guarantees or Undertakings - Not Applicable

F. Material Management or Service Contracts and Cost-Sharing Arrangements

The Company is a party to a service agreement with its affiliate, PRO IS, Inc. Pursuant to the service agreement, PRO IS provides professional and administrative services to the Company.

G. Nature of the Control Relationship

ProTucket Insurance Company's sole shareholder is Pro US Holdings, a Delaware corporation. With the prior approval of the Rhode Island Insurance Department, all the voting rights connected with the Company stock are exercised by Mr. Adam Barron by means of a proxy provided by Pro US Holdings, Inc., as a result of which Mr. Barron is the Company's sole Ultimate Controlling Person.

H. Amount Deducted from the Value of Upstream Intermediate Entity or Ultimate Parent Owned- Not Applicable

I. Investments in SCA that Exceed 10% of Admitted Assets- Not Applicable

J. Investments in Impaired SCAs - Not Applicable

K. Investment in Foreign Insurance Subsidiary- Not Applicable

L. Investment in Downstream Noninsurance Holding Company - Not Applicable

NOTES TO FINANCIAL STATEMENTS

- M. All SCA Investments
Not Applicable
- N. Investment in Insurance SCAs
Not Applicable
- O. SCA or SSAP 48 Entity Loss Tracking
Not Applicable

NOTE 11 Debt
Not Applicable

NOTE 12 Retirement Plans, Deferred Compensation, Postemployment Benefits and Compensated Absences and Other Postretirement Benefit Plans
Not Applicable

NOTE 13 Capital and Surplus, Dividend Restrictions and Quasi-Reorganizations

- A. ProTucket is authorized to issue 100,000,000 shares of common stock with a par value of \$2.50 per share. ProTucket has 1,000,000 shares of stock outstanding. On July 19, 2020, following approval by the Rhode Island Department of Business Regulation, Insurance Division, ProTucket increased the par value of its common stock from \$1.00 per share to \$2.50 share, and the number of shares of common stock authorized from 1,000,000 to 100,000,000.
- B. ProTucket Insurance Company has no preferred stocks outstanding.
- C. Dividend Restrictions- Not Applicable
- D. Dates and Amounts of Dividends Paid- Not Applicable
- E. Profits that may be Paid as Ordinary Dividends to Stockholders- Not Applicable
- F. Restrictions Placed on Unassigned Funds (Surplus)- Not Applicable
- G. Amount of Advances to Surplus not Repaid - Not Applicable
- H. Amount of Stock Held for Special Purposes- Not Applicable
- I. Reasons for Changes in Balance of Special Surplus Funds from Prior Period- Not Applicable
- J. The portion of unassigned funds (surplus) represented or reduced by cumulative unrealized gains and losses is \$0.00.
- K. The Company issued the following surplus debentures or similar obligations:
Not Applicable
- L. The impact of any restatement due to prior quasi-reorganizations is as follows:
Not Applicable
- M. Effective Date of Quasi-Reorganization for a Period of Ten Years Following Reorganization-Not Applicable

NOTE 14 Liabilities, Contingencies and Assessments
Not Applicable

NOTE 15 Leases
Not Applicable

NOTE 16 Information About Financial Instruments With Off-Balance Sheet Risk and Financial Instruments With Concentrations of Credit Risk
Not Applicable

NOTE 17 Sale, Transfer and Servicing of Financial Assets and Extinguishments of Liabilities
Not Applicable

NOTE 18 Gain or Loss to the Reporting Entity from Uninsured Plans and the Uninsured Portion of Partially Insured Plans
Not Applicable

NOTE 19 Direct Premium Written/Produced by Managing General Agents/Third Party Administrators
Not Applicable

NOTE 20 Fair Value Measurements

A.

(1) Fair Value Measurements at Reporting Date

Description for each class of asset or liability	(Level 1)	(Level 2)	(Level 3)	Net Asset Value (NAV)	Total
a. Assets at fair value					
Cash Equivalent, Short Term	\$ 45,475,197				\$ 45,475,197
LT Bonds	\$ 458,612				\$ 458,612
Total assets at fair value/NAV	\$ 45,933,809	\$ -	\$ -	\$ -	\$ 45,933,809

(2) Fair Value Measurements in (Level 3) of the Fair Value hierarchy
Not Applicable

- B. Fair Value Reporting under SSAP 100 and Other Accounting Pronouncements
Not Applicable
- C. Aggregate fair value for all financial instruments and the level within the fair value hierarchy in which the fair value measurements in their entirety fall.
Not Applicable
- D. Not Practicable to Estimate Fair Value
Not Applicable

NOTES TO FINANCIAL STATEMENTS

E. NAV Practical Expedient Investments
Not Applicable

NOTE 21 Other Items
Not Applicable

NOTE 22 Events Subsequent

Subsequent events have been considered through February 20, 2023 for these statutory financial statements which are to be issued on December 31, 2022.

NOTE 23 Reinsurance

- A. Unsecured Reinsurance Recoverables
Not Applicable
- B. Reinsurance Recoverable in Dispute
Not Applicable
- C. Reinsurance Assumed and Ceded
Not Applicable
- D. Uncollectible Reinsurance
Not Applicable
- E. Commutation of Reinsurance Reflected in Income and Expenses.
Not Applicable
- F. Retroactive Reinsurance

On December 22, 2020, the Company entered into a reinsurance novation agreement to assumed reinsurance contracts totaling \$19 million in reserves from Zurich American Insurance Company, American Guarantee and Liability Insurance Company, Zurich American Insurance Company of Illinois, American Zurich Insurance Company (collectively the "Ceding Company") and with Swiss Reinsurance America Corporation as the reinsurer.

In respect to the novation, the Company on December 22, 2020 entered into a loss portfolio transfer reinsurance agreement with Swiss Reinsurance America Corporation to ceded 100% of all reinsured liabilities assumed under the novation.

Pursuant to SSAP 62R, the novation and LPT are accounted for as retroactive reinsurance agreement as the pre-novation treatment of such assumed reinsurance contracts by the Company was accounted for as retroactive.

(1)

	Reported Company	
As:	Assumed	Ceded
a. Reserves Transferred:		
1. Initial Reserves	\$ 19,000,194	\$ 19,000,194
2. Adjustments - Prior Year (s)	\$ (4,013,767)	\$ (4,013,767)
3. Adjustments - Current Year	\$ -	\$ -
4. Current Total (1+2+3)	\$ 14,986,427	\$ 14,986,427
b. Consideration Paid or Received:		
1. Initial Consideration	\$ 18,264,992	\$ 18,264,992
2. Adjustments - Prior Year (s)	\$ -	\$ -
3. Adjustments - Current Year		
4. Current Total (1+2+3)	\$ 18,264,992	\$ 18,264,992
c. Paid Losses Reimbursed or Recovered:		
1. Prior Year (s)	\$ 799,010	\$ 799,010
2. Current Year	\$ 846,433	\$ 846,433
3. Current Total (1+2)	\$ 1,645,443	\$ 1,645,443
d. Special Surplus from Retroactive Reinsurance:		
1. Initial Surplus Gain or Loss		
2. Adjustments - Prior Year (s)	\$ -	\$ -
3. Adjustments - Current Year		
4. Current Year Restricted Surplus		
5. Cumulative Total Transferred to Unassigned Funds (1+2+3+4)	\$ -	\$ -

e. All cedents and reinsurers involved in all transactions included in summary totals above:

Company	Assumed Amount	Ceded Amount
Zurich American Insurance Company 16535	\$ 12,915,450	
American Guarantee and Liability Ins 26247	\$ 1,853,194	
Zurich American Ins Comp of Illinois 27855	\$ 217,783	
Swiss Reinsurance America Corporation 25364		\$ 14,986,427
Total	\$ 14,986,427	\$ 14,986,427

* Total amounts must agree with totals in a.4 above. Include the NAIC Company Code or Alien Insurer Identification Number for each insurer listed.

f. Total Paid Loss/LAE amounts recoverable (for authorized, reciprocal jurisdiction, unauthorized and certified reinsurers), any amounts more than 90 days overdue (for authorized, reciprocal jurisdiction, unauthorized and certified reinsurers), and for amounts recoverable the collateral held (for unauthorized and certified reinsurers) as respects amounts recoverable from unauthorized and certified reinsurers:
Not Applicable

G. Reinsurance Accounted for as a Deposit
Not Applicable

NOTES TO FINANCIAL STATEMENTS

H. Disclosures for the Transfer of Property and Casualty Run-off Agreements
Not Applicable

I. Certified Reinsurer Rating Downgraded or Status Subject to Revocation
Not Applicable

J. Reinsurance Agreements Qualifying for Reinsurer Aggregation
Not Applicable

K. Reinsurance Credit
Not Applicable

NOTE 24 Retrospectively Rated Contracts & Contracts Subject to Redetermination
Not Applicable

NOTE 25 Change in Incurred Losses and Loss Adjustment Expenses

As of December 31, 2022, the Company had Net Loss and Loss Adjustment Expense Reserve activity of (\$1,646,146) and cedes 100% to Swiss Reinsurance America Corporation resulting in an Incurred Net Loss and Loss Adjustment Expense of \$0.

NOTE 26 Intercompany Pooling Arrangements
Not Applicable

NOTE 27 Structured Settlements
Not Applicable

NOTE 28 Health Care Receivables
Not Applicable

NOTE 29 Participating Policies
Not Applicable

NOTE 30 Premium Deficiency Reserves
Not Applicable

NOTE 31 High Deductibles
Not Applicable

NOTE 32 Discounting of Liabilities for Unpaid Losses or Unpaid Loss Adjustment Expenses
Not Applicable

NOTE 33 Asbestos/Environmental Reserves
A. Not Applicable

NOTE 34 Subscriber Savings Accounts
Not Applicable

NOTE 35 Multiple Peril Crop Insurance
Not Applicable

NOTE 36 Financial Guaranty Insurance
Not Applicable

GENERAL INTERROGATORIES

PART 1 - COMMON INTERROGATORIES GENERAL

- 1.1 Is the reporting entity a member of an Insurance Holding Company System consisting of two or more affiliated persons, one or more of which is an insurer? Yes [X] No []
If yes, complete Schedule Y, Parts 1, 1A, 2 and 3.
- 1.2 If yes, did the reporting entity register and file with its domiciliary State Insurance Commissioner, Director or Superintendent or with such regulatory official of the state of domicile of the principal insurer in the Holding Company System, a registration statement providing disclosure substantially similar to the standards adopted by the National Association of Insurance Commissioners (NAIC) in its Model Insurance Holding Company System Regulatory Act and model regulations pertaining thereto, or is the reporting entity subject to standards and disclosure requirements substantially similar to those required by such Act and regulations? Yes [X] No [] N/A []
- 1.3 State Regulating? Rhode Island
- 1.4 Is the reporting entity publicly traded or a member of a publicly traded group? Yes [] No [X]
- 1.5 If the response to 1.4 is yes, provide the CIK (Central Index Key) code issued by the SEC for the entity/group.
- 2.1 Has any change been made during the year of this statement in the charter, by-laws, articles of incorporation, or deed of settlement of the reporting entity? Yes [] No [X]
- 2.2 If yes, date of change:
- 3.1 State as of what date the latest financial examination of the reporting entity was made or is being made. 12/31/2021
- 3.2 State the as of date that the latest financial examination report became available from either the state of domicile or the reporting entity. This date should be the date of the examined balance sheet and not the date the report was completed or released. 12/31/2021
- 3.3 State as of what date the latest financial examination report became available to other states or the public from either the state of domicile or the reporting entity. This is the release date or completion date of the examination report and not the date of the examination (balance sheet date). 06/30/2022
- 3.4 By what department or departments?
Rhode Island Insurance Department
- 3.5 Have all financial statement adjustments within the latest financial examination report been accounted for in a subsequent financial statement filed with Departments? Yes [] No [] N/A [X]
- 3.6 Have all of the recommendations within the latest financial examination report been complied with? Yes [X] No [] N/A []
- 4.1 During the period covered by this statement, did any agent, broker, sales representative, non-affiliated sales/service organization or any combination thereof under common control (other than salaried employees of the reporting entity), receive credit or commissions for or control a substantial part (more than 20 percent of any major line of business measured on direct premiums) of:
4.11 sales of new business? Yes [] No [X]
4.12 renewals? Yes [] No [X]
- 4.2 During the period covered by this statement, did any sales/service organization owned in whole or in part by the reporting entity or an affiliate, receive credit or commissions for or control a substantial part (more than 20 percent of any major line of business measured on direct premiums) of:
4.21 sales of new business? Yes [] No [X]
4.22 renewals? Yes [] No [X]
- 5.1 Has the reporting entity been a party to a merger or consolidation during the period covered by this statement? Yes [] No [X]
If yes, complete and file the merger history data file with the NAIC.
- 5.2 If yes, provide the name of the entity, NAIC Company Code, and state of domicile (use two letter state abbreviation) for any entity that has ceased to exist as a result of the merger or consolidation.

1 Name of Entity	2 NAIC Company Code	3 State of Domicile

- 6.1 Has the reporting entity had any Certificates of Authority, licenses or registrations (including corporate registration, if applicable) suspended or revoked by any governmental entity during the reporting period? Yes [] No [X]
- 6.2 If yes, give full information:
- 7.1 Does any foreign (non-United States) person or entity directly or indirectly control 10% or more of the reporting entity? Yes [X] No []
- 7.2 If yes,
7.21 State the percentage of foreign control; 100.0 %
7.22 State the nationality(s) of the foreign person(s) or entity(s); or if the entity is a mutual or reciprocal, the nationality of its manager or attorney-in-fact and identify the type of entity(s) (e.g., individual, corporation, government, manager or attorney-in-fact).

1 Nationality	2 Type of Entity
United Kingdom	English Private Limited Company
United Kingdom	Individual

ANNUAL STATEMENT FOR THE YEAR 2022 OF THE ProTucket Insurance Company

GENERAL INTERROGATORIES

- 8.1 Is the company a subsidiary of a depository institution holding company (DIHC) or a DIHC itself, regulated by the Federal Reserve Board? Yes [] No [X]
- 8.2 If the response to 8.1 is yes, please identify the name of the DIHC.
.....
- 8.3 Is the company affiliated with one or more banks, thrifts or securities firms? Yes [] No [X]
- 8.4 If response to 8.3 is yes, please provide below the names and location (city and state of the main office) of any affiliates regulated by a federal regulatory services agency [i.e. the Federal Reserve Board (FRB), the Office of the Comptroller of the Currency (OCC), the Federal Deposit Insurance Corporation (FDIC) and the Securities Exchange Commission (SEC)] and identify the affiliate's primary federal regulator.

1 Affiliate Name	2 Location (City, State)	3 FRB	4 OCC	5 FDIC	6 SEC
.....

- 8.5 Is the reporting entity a depository institution holding company with significant insurance operations as defined by the Board of Governors of Federal Reserve System or a subsidiary of the depository institution holding company? Yes [] No [X]
- 8.6 If response to 8.5 is no, is the reporting entity a company or subsidiary of a company that has otherwise been made subject to the Federal Reserve Board's capital rule? Yes [] No [X] N/A []
9. What is the name and address of the independent certified public accountant or accounting firm retained to conduct the annual audit?
Baker Tilly US, LLP, 1 Penn Plaza, Suite 3000, New York, NY 10119
- 10.1 Has the insurer been granted any exemptions to the prohibited non-audit services provided by the certified independent public accountant requirements as allowed in Section 7H of the Annual Financial Reporting Model Regulation (Model Audit Rule), or substantially similar state law or regulation? Yes [] No [X]
- 10.2 If the response to 10.1 is yes, provide information related to this exemption:
.....
- 10.3 Has the insurer been granted any exemptions related to the other requirements of the Annual Financial Reporting Model Regulation as allowed for in Section 18A of the Model Regulation, or substantially similar state law or regulation? Yes [] No [X]
- 10.4 If the response to 10.3 is yes, provide information related to this exemption:
.....
- 10.5 Has the reporting entity established an Audit Committee in compliance with the domiciliary state insurance laws? Yes [X] No [] N/A []
- 10.6 If the response to 10.5 is no or n/a, please explain
.....
11. What is the name, address and affiliation (officer/employee of the reporting entity or actuary/consultant associated with an actuarial consulting firm) of the individual providing the statement of actuarial opinion/certification?
.....
- 12.1 Does the reporting entity own any securities of a real estate holding company or otherwise hold real estate indirectly? Yes [] No [X]
- 12.11 Name of real estate holding company ...
12.12 Number of parcels involved
12.13 Total book/adjusted carrying value \$
- 12.2 If, yes provide explanation:
.....
- 13. FOR UNITED STATES BRANCHES OF ALIEN REPORTING ENTITIES ONLY:**
- 13.1 What changes have been made during the year in the United States manager or the United States trustees of the reporting entity?
.....
- 13.2 Does this statement contain all business transacted for the reporting entity through its United States Branch on risks wherever located? Yes [] No []
- 13.3 Have there been any changes made to any of the trust indentures during the year? Yes [] No []
- 13.4 If answer to (13.3) is yes, has the domiciliary or entry state approved the changes? Yes [] No [] N/A []
- 14.1 Are the senior officers (principal executive officer, principal financial officer, principal accounting officer or controller, or persons performing similar functions) of the reporting entity subject to a code of ethics, which includes the following standards? Yes [X] No []
- a. Honest and ethical conduct, including the ethical handling of actual or apparent conflicts of interest between personal and professional relationships;
b. Full, fair, accurate, timely and understandable disclosure in the periodic reports required to be filed by the reporting entity;
c. Compliance with applicable governmental laws, rules and regulations;
d. The prompt internal reporting of violations to an appropriate person or persons identified in the code; and
e. Accountability for adherence to the code.
- 14.11 If the response to 14.1 is No, please explain:
.....
- 14.2 Has the code of ethics for senior managers been amended? Yes [] No [X]
- 14.21 If the response to 14.2 is yes, provide information related to amendment(s).
.....
- 14.3 Have any provisions of the code of ethics been waived for any of the specified officers? Yes [] No [X]
- 14.31 If the response to 14.3 is yes, provide the nature of any waiver(s).
.....

GENERAL INTERROGATORIES

- 15.1 Is the reporting entity the beneficiary of a Letter of Credit that is unrelated to reinsurance where the issuing or confirming bank is not on the SVO Bank List? Yes [] No [X]
- 15.2 If the response to 15.1 is yes, indicate the American Bankers Association (ABA) Routing Number and the name of the issuing or confirming bank of the Letter of Credit and describe the circumstances in which the Letter of Credit is triggered.

1 American Bankers Association (ABA) Routing Number	2 Issuing or Confirming Bank Name	3 Circumstances That Can Trigger the Letter of Credit	4 Amount

BOARD OF DIRECTORS

16. Is the purchase or sale of all investments of the reporting entity passed upon either by the board of directors or a subordinate committee thereof? Yes [X] No []
17. Does the reporting entity keep a complete permanent record of the proceedings of its board of directors and all subordinate committees thereof? Yes [X] No []
18. Has the reporting entity an established procedure for disclosure to its board of directors or trustees of any material interest or affiliation on the part of any of its officers, directors, trustees or responsible employees that is in conflict or is likely to conflict with the official duties of such person? Yes [X] No []

FINANCIAL

19. Has this statement been prepared using a basis of accounting other than Statutory Accounting Principles (e.g., Generally Accepted Accounting Principles)? Yes [] No [X]
- 20.1 Total amount loaned during the year (inclusive of Separate Accounts, exclusive of policy loans):
- 20.11 To directors or other officers.....\$
 - 20.12 To stockholders not officers.....\$
 - 20.13 Trustees, supreme or grand (Fraternal Only) \$
- 20.2 Total amount of loans outstanding at the end of year (inclusive of Separate Accounts, exclusive of policy loans):
- 20.21 To directors or other officers.....\$
 - 20.22 To stockholders not officers.....\$
 - 20.23 Trustees, supreme or grand (Fraternal Only) \$
- 21.1 Were any assets reported in this statement subject to a contractual obligation to transfer to another party without the liability for such obligation being reported in the statement? Yes [] No [X]
- 21.2 If yes, state the amount thereof at December 31 of the current year:
- 21.21 Rented from others.....\$
 - 21.22 Borrowed from others.....\$
 - 21.23 Leased from others\$
 - 21.24 Other\$
- 22.1 Does this statement include payments for assessments as described in the Annual Statement Instructions other than guaranty fund or guaranty association assessments? Yes [] No [X]
- 22.2 If answer is yes:
- 22.21 Amount paid as losses or risk adjustment \$
 - 22.22 Amount paid as expenses\$
 - 22.23 Other amounts paid\$
- 23.1 Does the reporting entity report any amounts due from parent, subsidiaries or affiliates on Page 2 of this statement? Yes [] No [X]
- 23.2 If yes, indicate any amounts receivable from parent included in the Page 2 amount: \$
- 24.1 Does the insurer utilize third parties to pay agent commissions in which the amounts advanced by the third parties are not settled in full within 90 days? Yes [] No [X]
- 24.2 If the response to 24.1 is yes, identify the third-party that pays the agents and whether they are a related party.

Name of Third-Party	Is the Third-Party Agent a Related Party (Yes/No)

INVESTMENT

- 25.01 Were all the stocks, bonds and other securities owned December 31 of current year, over which the reporting entity has exclusive control, in the actual possession of the reporting entity on said date? (other than securities lending programs addressed in 25.03)..... Yes [X] No []

ANNUAL STATEMENT FOR THE YEAR 2022 OF THE ProTucket Insurance Company

GENERAL INTERROGATORIES

- 25.02 If no, give full and complete information relating thereto
.....
- 25.03 For securities lending programs, provide a description of the program including value for collateral and amount of loaned securities, and whether collateral is carried on or off-balance sheet. (an alternative is to reference Note 17 where this information is also provided)
.....
- 25.04 For the reporting entity's securities lending program, report amount of collateral for conforming programs as outlined in the Risk-Based Capital Instructions. \$
- 25.05 For the reporting entity's securities lending program, report amount of collateral for other programs. \$
- 25.06 Does your securities lending program require 102% (domestic securities) and 105% (foreign securities) from the counterparty at the outset of the contract? Yes [] No [] N/A [X]
- 25.07 Does the reporting entity non-admit when the collateral received from the counterparty falls below 100%? Yes [] No [] N/A [X]
- 25.08 Does the reporting entity or the reporting entity's securities lending agent utilize the Master Securities lending Agreement (MSLA) to conduct securities lending? Yes [] No [] N/A [X]
- 25.09 For the reporting entity's securities lending program state the amount of the following as of December 31 of the current year:
- 25.091 Total fair value of reinvested collateral assets reported on Schedule DL, Parts 1 and 2. \$ 0
- 25.092 Total book adjusted/carrying value of reinvested collateral assets reported on Schedule DL, Parts 1 and 2 \$ 0
- 25.093 Total payable for securities lending reported on the liability page. \$ 0

- 26.1 Were any of the stocks, bonds or other assets of the reporting entity owned at December 31 of the current year not exclusively under the control of the reporting entity or has the reporting entity sold or transferred any assets subject to a put option contract that is currently in force? (Exclude securities subject to Interrogatory 21.1 and 25.03). Yes [X] No []
- 26.2 If yes, state the amount thereof at December 31 of the current year:
- 26.21 Subject to repurchase agreements \$
- 26.22 Subject to reverse repurchase agreements \$
- 26.23 Subject to dollar repurchase agreements \$
- 26.24 Subject to reverse dollar repurchase agreements \$
- 26.25 Placed under option agreements \$
- 26.26 Letter stock or securities restricted as to sale - excluding FHLB Capital Stock \$
- 26.27 FHLB Capital Stock \$
- 26.28 On deposit with states \$ 4,261,969
- 26.29 On deposit with other regulatory bodies \$
- 26.30 Pledged as collateral - excluding collateral pledged to an FHLB \$ 13,762,706
- 26.31 Pledged as collateral to FHLB - including assets backing funding agreements \$
- 26.32 Other \$

26.3 For category (26.26) provide the following:

1 Nature of Restriction	2 Description	3 Amount

- 27.1 Does the reporting entity have any hedging transactions reported on Schedule DB? Yes [] No [X]
- 27.2 If yes, has a comprehensive description of the hedging program been made available to the domiciliary state? Yes [] No [] N/A [X]
If no, attach a description with this statement.

LINES 27.3 through 27.5: FOR LIFE/FRATERNAL REPORTING ENTITIES ONLY:

- 27.3 Does the reporting entity utilize derivatives to hedge variable annuity guarantees subject to fluctuations as a result of interest rate sensitivity? . Yes [] No [X]
- 27.4 If the response to 27.3 is YES, does the reporting entity utilize:
- 27.41 Special accounting provision of SSAP No. 108 Yes [] No []
- 27.42 Permitted accounting practice Yes [] No []
- 27.43 Other accounting guidance Yes [] No []
- 27.5 By responding YES to 27.41 regarding utilizing the special accounting provisions of SSAP No. 108, the reporting entity attests to the following: Yes [] No []
- The reporting entity has obtained explicit approval from the domiciliary state.
 - Hedging strategy subject to the special accounting provisions is consistent with the requirements of VM-21.
 - Actuarial certification has been obtained which indicates that the hedging strategy is incorporated within the establishment of VM-21 reserves and provides the impact of the hedging strategy within the Actuarial Guideline Conditional Tail Expectation Amount.
 - Financial Officer Certification has been obtained which indicates that the hedging strategy meets the definition of a Clearly Defined Hedging Strategy within VM-21 and that the Clearly Defined Hedging Strategy is the hedging strategy being used by the company in its actual day-to-day risk mitigation efforts.
- 28.1 Were any preferred stocks or bonds owned as of December 31 of the current year mandatorily convertible into equity, or, at the option of the issuer, convertible into equity? Yes [] No [X]
- 28.2 If yes, state the amount thereof at December 31 of the current year. \$
29. Excluding items in Schedule E - Part 3 - Special Deposits, real estate, mortgage loans and investments held physically in the reporting entity's offices, vaults or safety deposit boxes, were all stocks, bonds and other securities, owned throughout the current year held pursuant to a custodial agreement with a qualified bank or trust company in accordance with Section 1, III - General Examination Considerations, F. Outsourcing of Critical Functions, Custodial or Safekeeping Agreements of the NAIC Financial Condition Examiners Handbook?..... Yes [] No [X]

29.01 For agreements that comply with the requirements of the NAIC Financial Condition Examiners Handbook, complete the following:

1 Name of Custodian(s)	2 Custodian's Address
The Washington Trust Company	23 Broad Street, Westerly, RI 02891-1868

ANNUAL STATEMENT FOR THE YEAR 2022 OF THE ProTucket Insurance Company

GENERAL INTERROGATORIES

29.02 For all agreements that do not comply with the requirements of the NAIC Financial Condition Examiners Handbook, provide the name, location and a complete explanation:

1 Name(s)	2 Location(s)	3 Complete Explanation(s)
BNY Mellon	240 Greenwich Trust, 4th, New York, NY 10286	The bonds and cash held with BNY Mellon are held in a Reg. 114 trust under NY law to permit the cedant to obtain credit for reinsurance in NY, its domiciliary state. Legal title to the bonds rests with BNY Mellon as trustee.

29.03 Have there been any changes, including name changes, in the custodian(s) identified in 29.01 during the current year?..... Yes [] No [X]

29.04 If yes, give full and complete information relating thereto:

1 Old Custodian	2 New Custodian	3 Date of Change	4 Reason
.....

29.05 Investment management – Identify all investment advisors, investment managers, broker/dealers, including individuals that have the authority to make investment decisions on behalf of the reporting entity. For assets that are managed internally by employees of the reporting entity, note as such. ["...that have access to the investment accounts"; "...handle securities"]

1 Name of Firm or Individual	2 Affiliation
.....

29.0597 For those firms/individuals listed in the table for Question 29.05, do any firms/individuals unaffiliated with the reporting entity (i.e. designated with a "U") manage more than 10% of the reporting entity's invested assets?..... Yes [] No [X]

29.0598 For firms/individuals unaffiliated with the reporting entity (i.e. designated with a "U") listed in the table for Question 29.05, does the total assets under management aggregate to more than 50% of the reporting entity's invested assets?..... Yes [] No [X]

29.06 For those firms or individuals listed in the table for 29.05 with an affiliation code of "A" (affiliated) or "U" (unaffiliated), provide the information for the table below.

1 Central Registration Depository Number	2 Name of Firm or Individual	3 Legal Entity Identifier (LEI)	4 Registered With	5 Investment Management Agreement (IMA) Filed
.....

30.1 Does the reporting entity have any diversified mutual funds reported in Schedule D, Part 2 (diversified according to the Securities and Exchange Commission (SEC) in the Investment Company Act of 1940 [Section 5(b)(1)])? Yes [] No [X]

30.2 If yes, complete the following schedule:

1 CUSIP #	2 Name of Mutual Fund	3 Book/Adjusted Carrying Value
30.2999 - Total		0

30.3 For each mutual fund listed in the table above, complete the following schedule:

1 Name of Mutual Fund (from above table)	2 Name of Significant Holding of the Mutual Fund	3 Amount of Mutual Fund's Book/Adjusted Carrying Value Attributable to the Holding	4 Date of Valuation
.....

GENERAL INTERROGATORIES

31. Provide the following information for all short-term and long-term bonds and all preferred stocks. Do not substitute amortized value or statement value for fair value.

	1	2	3
	Statement (Admitted) Value	Fair Value	Excess of Statement over Fair Value (-), or Fair Value over Statement (+)
31.1 Bonds	463,317	458,612	(4,705)
31.2 Preferred stocks	0		0
31.3 Totals	463,317	458,612	(4,705)

31.4 Describe the sources or methods utilized in determining the fair values:
.....

32.1 Was the rate used to calculate fair value determined by a broker or custodian for any of the securities in Schedule D? Yes [] No [X]

32.2 If the answer to 32.1 is yes, does the reporting entity have a copy of the broker's or custodian's pricing policy (hard copy or electronic copy) for all brokers or custodians used as a pricing source? Yes [] No []

32.3 If the answer to 32.2 is no, describe the reporting entity's process for determining a reliable pricing source for purposes of disclosure of fair value for Schedule D:
.....

33.1 Have all the filing requirements of the Purposes and Procedures Manual of the NAIC Investment Analysis Office been followed? Yes [X] No []

33.2 If no, list exceptions:
.....

34. By self-designating 5GI securities, the reporting entity is certifying the following elements of each self-designated 5GI security:
 a. Documentation necessary to permit a full credit analysis of the security does not exist or an NAIC CRP credit rating for an FE or PL security is not available.
 b. Issuer or obligor is current on all contracted interest and principal payments.
 c. The insurer has an actual expectation of ultimate payment of all contracted interest and principal.
 Has the reporting entity self-designated 5GI securities? Yes [] No [X]

35. By self-designating PLGI securities, the reporting entity is certifying the following elements of each self-designated PLGI security:
 a. The security was purchased prior to January 1, 2018.
 b. The reporting entity is holding capital commensurate with the NAIC Designation reported for the security.
 c. The NAIC Designation was derived from the credit rating assigned by an NAIC CRP in its legal capacity as a NRSRO which is shown on a current private letter rating held by the insurer and available for examination by state insurance regulators.
 d. The reporting entity is not permitted to share this credit rating of the PL security with the SVO.
 Has the reporting entity self-designated PLGI securities? Yes [] No [X]

36. By assigning FE to a Schedule BA non-registered private fund, the reporting entity is certifying the following elements of each self-designated FE fund:
 a. The shares were purchased prior to January 1, 2019.
 b. The reporting entity is holding capital commensurate with the NAIC Designation reported for the security.
 c. The security had a public credit rating(s) with annual surveillance assigned by an NAIC CRP in its legal capacity as an NRSRO prior to January 1, 2019.
 d. The fund only or predominantly holds bonds in its portfolio.
 e. The current reported NAIC Designation was derived from the public credit rating(s) with annual surveillance assigned by an NAIC CRP in its legal capacity as an NRSRO.
 f. The public credit rating(s) with annual surveillance assigned by an NAIC CRP has not lapsed.
 Has the reporting entity assigned FE to Schedule BA non-registered private funds that complied with the above criteria? Yes [] No [X]

37. By rolling/renewing short-term or cash equivalent investments with continued reporting on Schedule DA, Part 1 or Schedule E Part 2 (identified through a code (%) in those investment schedules), the reporting entity is certifying to the following:
 a. The investment is a liquid asset that can be terminated by the reporting entity on the current maturity date.
 b. If the investment is with a nonrelated party or nonaffiliate, then it reflects an arms-length transaction with renewal completed at the discretion of all involved parties.
 c. If the investment is with a related party or affiliate, then the reporting entity has completed robust re-underwriting of the transaction for which documentation is available for regulator review.
 d. Short-term and cash equivalent investments that have been renewed/rolled from the prior period that do not meet the criteria in 37.a - 37.c are reported as long-term investments.
 Has the reporting entity rolled/renewed short-term or cash equivalent investments in accordance with these criteria? Yes [X] No [] N/A []

GENERAL INTERROGATORIES

38.1 Does the reporting entity directly hold cryptocurrencies? Yes [] No [X]

38.2 If the response to 38.1 is yes, on what schedule are they reported?

39.1 Does the reporting entity directly or indirectly accept cryptocurrencies as payments for premiums on policies? Yes [] No [X]

39.2 If the response to 39.1 is yes, are the cryptocurrencies held directly or are they immediately converted to U.S. dollars?
 39.21 Held directly Yes [] No [X]
 39.22 Immediately converted to U.S. dollars Yes [] No [X]

39.3 If the response to 38.1 or 39.1 is yes, list all cryptocurrencies accepted for payments of premiums or that are held directly.

1 Name of Cryptocurrency	2 Immediately Converted to USD, Directly Held, or Both	3 Accepted for Payment of Premiums

OTHER

40.1 Amount of payments to trade associations, service organizations and statistical or rating bureaus, if any? \$ 11,160

40.2 List the name of the organization and the amount paid if any such payment represented 25% or more of the total payments to trade associations, service organizations and statistical or rating bureaus during the period covered by this statement.

1 Name	2 Amount Paid
American Property Casualty Insurers Association	8,160
Property Insurance Association of Louisiana	3,000

41.1 Amount of payments for legal expenses, if any? \$

41.2 List the name of the firm and the amount paid if any such payment represented 25% or more of the total payments for legal expenses during the period covered by this statement.

1 Name	2 Amount Paid

42.1 Amount of payments for expenditures in connection with matters before legislative bodies, officers or departments of government, if any? \$

42.2 List the name of the firm and the amount paid if any such payment represented 25% or more of the total payment expenditures in connection with matters before legislative bodies, officers, or departments of government during the period covered by this statement.

1 Name	2 Amount Paid

GENERAL INTERROGATORIES

PART 2 - PROPERTY AND CASUALTY INTERROGATORIES

1.1 Does the reporting entity have any direct Medicare Supplement Insurance in force? Yes [] No [X]

1.2 If yes, indicate premium earned on U. S. business only. \$ _____

1.3 What portion of Item (1.2) is not reported on the Medicare Supplement Insurance Experience Exhibit? \$ _____
 1.31 Reason for excluding

1.4 Indicate amount of earned premium attributable to Canadian and/or Other Alien not included in Item (1.2) above. \$ _____

1.5 Indicate total incurred claims on all Medicare Supplement Insurance. \$ _____ 0

1.6 Individual policies:

	Most current three years:	
1.61 Total premium earned	\$	0
1.62 Total incurred claims	\$	0
1.63 Number of covered lives		0
All years prior to most current three years		
1.64 Total premium earned	\$	0
1.65 Total incurred claims	\$	0
1.66 Number of covered lives		0

1.7 Group policies:

	Most current three years:	
1.71 Total premium earned	\$	0
1.72 Total incurred claims	\$	0
1.73 Number of covered lives		0
All years prior to most current three years		
1.74 Total premium earned	\$	0
1.75 Total incurred claims	\$	0
1.76 Number of covered lives		0

2. Health Test:

	1 Current Year	2 Prior Year
2.1 Premium Numerator		0
2.2 Premium Denominator		0
2.3 Premium Ratio (2.1/2.2)	0.000	0.000
2.4 Reserve Numerator		0
2.5 Reserve Denominator		0
2.6 Reserve Ratio (2.4/2.5)	0.000	0.000

3.1 Did the reporting entity issue participating policies during the calendar year? Yes [] No [X]

3.2 If yes, provide the amount of premium written for participating and/or non-participating policies during the calendar year:

3.21 Participating policies	\$	
3.22 Non-participating policies	\$	

4. For mutual reporting Entities and Reciprocal Exchanges Only:

4.1 Does the reporting entity issue assessable policies? Yes [] No []

4.2 Does the reporting entity issue non-assessable policies? Yes [] No []

4.3 If assessable policies are issued, what is the extent of the contingent liability of the policyholders? % _____

4.4 Total amount of assessments paid or ordered to be paid during the year on deposit notes or contingent premiums. \$ _____

5. For Reciprocal Exchanges Only:

5.1 Does the Exchange appoint local agents? Yes [] No []

5.2 If yes, is the commission paid:

5.21 Out of Attorney's-in-fact compensation.....	Yes []	No []	N/A []
5.22 As a direct expense of the exchange.....	Yes []	No []	N/A []

5.3 What expenses of the Exchange are not paid out of the compensation of the Attorney-in-fact?

5.4 Has any Attorney-in-fact compensation, contingent on fulfillment of certain conditions, been deferred? Yes [] No []

5.5 If yes, give full information

GENERAL INTERROGATORIES

PART 2 - PROPERTY AND CASUALTY INTERROGATORIES

- 6.1 What provision has this reporting entity made to protect itself from an excessive loss in the event of a catastrophe under a workers' compensation contract issued without limit of loss?
Not Applicable
- 6.2 Describe the method used to estimate this reporting entity's probable maximum insurance loss, and identify the type of insured exposures comprising that probable maximum loss, the locations of concentrations of those exposures and the external resources (such as consulting firms or computer software models), if any, used in the estimation process.
The current book of business is comprised of run-off business containing policies with effective dates no later than the year 2000. In addition, the only claims currently open are for the Workers Compensation line of business. As such, ProTucket has determined that there is no significant catastrophe exposure associated with these policies as any catastrophic occurrence would already have manifested itself over the past twenty years. No catastrophes have been identified for the open Workers Compensation claims. As a result, the maximum probable loss would be equivalent to the upper range of the actuarial estimates of unpaid loss and loss adjustment expense.
- 6.3 What provision has this reporting entity made (such as a catastrophic reinsurance program) to protect itself from an excessive loss arising from the types and concentrations of insured exposures comprising its probable maximum property insurance loss?
The Company does not have exposures comprising of property insurance losses.
- 6.4 Does the reporting entity carry catastrophe reinsurance protection for at least one reinstatement, in an amount sufficient to cover its estimated probable maximum loss attributable to a single loss event or occurrence? Yes [] No [X]
- 6.5 If no, describe any arrangements or mechanisms employed by the reporting entity to supplement its catastrophe reinsurance program or to hedge its exposure to uninsured catastrophic loss.
The Company has no current exposure to catastrophe risks.
- 7.1 Has this reporting entity reinsured any risk with any other entity under a quota share reinsurance contract that includes a provision that would limit the reinsurer's losses below the stated quota share percentage (e.g., a deductible, a loss ratio corridor, a loss cap, an aggregate limit or any similar provisions)? Yes [] No [X]
- 7.2 If yes, indicate the number of reinsurance contracts containing such provisions:
- 7.3 If yes, does the amount of reinsurance credit taken reflect the reduction in quota share coverage caused by any applicable limiting provision(s)? Yes [] No []
- 8.1 Has this reporting entity reinsured any risk with any other entity and agreed to release such entity from liability, in whole or in part, from any loss that may occur on this risk, or portion thereof, reinsured? Yes [] No [X]
- 8.2 If yes, give full information
.....
- 9.1 Has the reporting entity ceded any risk under any reinsurance contract (or under multiple contracts with the same reinsurer or its affiliates) for which during the period covered by the statement: (i) it recorded a positive or negative underwriting result greater than 5% of prior year-end surplus as regards policyholders or it reported calendar year written premium ceded or year-end loss and loss expense reserves ceded greater than 5% of prior year-end surplus as regards policyholders; (ii) it accounted for that contract as reinsurance and not as a deposit; and (iii) the contract(s) contain one or more of the following features or other features that would have similar results:
(a) A contract term longer than two years and the contract is noncancellable by the reporting entity during the contract term;
(b) A limited or conditional cancellation provision under which cancellation triggers an obligation by the reporting entity, or an affiliate of the reporting entity, to enter into a new reinsurance contract with the reinsurer, or an affiliate of the reinsurer;
(c) Aggregate stop loss reinsurance coverage;
(d) A unilateral right by either party (or both parties) to commute the reinsurance contract, whether conditional or not, except for such provisions which are only triggered by a decline in the credit status of the other party;
(e) A provision permitting reporting of losses, or payment of losses, less frequently than on a quarterly basis (unless there is no activity during the period); or
(f) Payment schedule, accumulating retentions from multiple years or any features inherently designed to delay timing of the reimbursement to the ceding entity. Yes [] No [X]
- 9.2 Has the reporting entity during the period covered by the statement ceded any risk under any reinsurance contract (or under multiple contracts with the same reinsurer or its affiliates), for which, during the period covered by the statement, it recorded a positive or negative underwriting result greater than 5% of prior year-end surplus as regards policyholders or it reported calendar year written premium ceded or year-end loss and loss expense reserves ceded greater than 5% of prior year-end surplus as regards policyholders; excluding cessions to approved pooling arrangements or to captive insurance companies that are directly or indirectly controlling, controlled by, or under common control with (i) one or more unaffiliated policyholders of the reporting entity, or (ii) an association of which one or more unaffiliated policyholders of the reporting entity is a member where:
(a) The written premium ceded to the reinsurer by the reporting entity or its affiliates represents fifty percent (50%) or more of the entire direct and assumed premium written by the reinsurer based on its most recently available financial statement; or
(b) Twenty-five percent (25%) or more of the written premium ceded to the reinsurer has been retroceded back to the reporting entity or its affiliates in a separate reinsurance contract. Yes [] No [X]
- 9.3 If yes to 9.1 or 9.2, please provide the following information in the Reinsurance Summary Supplemental Filing for General Interrogatory 9:
(a) The aggregate financial statement impact gross of all such ceded reinsurance contracts on the balance sheet and statement of income;
(b) A summary of the reinsurance contract terms and indicate whether it applies to the contracts meeting the criteria in 9.1 or 9.2; and
(c) A brief discussion of management's principle objectives in entering into the reinsurance contract including the economic purpose to be achieved.
- 9.4 Except for transactions meeting the requirements of paragraph 36 of SSAP No. 62R - Property and Casualty Reinsurance, has the reporting entity ceded any risk under any reinsurance contract (or multiple contracts with the same reinsurer or its affiliates) during the period covered by the financial statement, and either:
(a) Accounted for that contract as reinsurance (either prospective or retroactive) under statutory accounting principles ("SAP") and as a deposit under generally accepted accounting principles ("GAAP"); or
(b) Accounted for that contract as reinsurance under GAAP and as a deposit under SAP? Yes [] No [X]
- 9.5 If yes to 9.4, explain in the Reinsurance Summary Supplemental Filing for General Interrogatory 9 (Section D) why the contract(s) is treated differently for GAAP and SAP.
- 9.6 The reporting entity is exempt from the Reinsurance Attestation Supplement under one or more of the following criteria:
(a) The entity does not utilize reinsurance; or, Yes [] No [X]
(b) The entity only engages in a 100% quota share contract with an affiliate and the affiliated or lead company has filed an attestation supplement; or Yes [] No [X]
(c) The entity has no external cessions and only participates in an intercompany pool and the affiliated or lead company has filed an attestation supplement. Yes [] No [X]
10. If the reporting entity has assumed risks from another entity, there should be charged on account of such reinsurances a reserve equal to that which the original entity would have been required to charge had it retained the risks. Has this been done? Yes [X] No [] N/A [X]

GENERAL INTERROGATORIES

PART 2 - PROPERTY AND CASUALTY INTERROGATORIES

- 11.1 Has the reporting entity guaranteed policies issued by any other entity and now in force? Yes [] No []
- 11.2 If yes, give full information
.....
- 12.1 If the reporting entity recorded accrued retrospective premiums on insurance contracts on Line 15.3 of the asset schedule, Page 2, state the amount of corresponding liabilities recorded for:
- 12.11 Unpaid losses\$0
- 12.12 Unpaid underwriting expenses (including loss adjustment expenses)\$0
- 12.2 Of the amount on Line 15.3, Page 2, state the amount which is secured by letters of credit, collateral and other funds\$0
- 12.3 If the reporting entity underwrites commercial insurance risks, such as workers' compensation, are premium notes or promissory notes accepted from its insureds covering unpaid premiums and/or unpaid losses? Yes [] No [] N/A [X]
- 12.4 If yes, provide the range of interest rates charged under such notes during the period covered by this statement:
- 12.41 From %
- 12.42 To..... %
- 12.5 Are letters of credit or collateral and other funds received from insureds being utilized by the reporting entity to secure premium notes or promissory notes taken by a reporting entity, or to secure any of the reporting entity's reported direct unpaid loss reserves, including unpaid losses under loss deductible features of commercial policies? Yes [] No [X]
- 12.6 If yes, state the amount thereof at December 31 of the current year:
- 12.61 Letters of credit\$0
- 12.62 Collateral and other funds.....\$0
- 13.1 Largest net aggregate amount insured in any one risk (excluding workers' compensation):\$0
- 13.2 Does any reinsurance contract considered in the calculation of this amount include an aggregate limit of recovery without also including a reinstatement provision? Yes [] No [X]
- 13.3 State the number of reinsurance contracts (excluding individual facultative risk certificates, but including facultative programs, automatic facilities or facultative obligatory contracts) considered in the calculation of the amount.
- 14.1 Is the company a cedant in a multiple cedant reinsurance contract? Yes [] No [X]
- 14.2 If yes, please describe the method of allocating and recording reinsurance among the cedants:
.....
- 14.3 If the answer to 14.1 is yes, are the methods described in item 14.2 entirely contained in the respective multiple cedant reinsurance contracts? Yes [] No []
- 14.4 If the answer to 14.3 is no, are all the methods described in 14.2 entirely contained in written agreements? Yes [] No []
- 14.5 If the answer to 14.4 is no, please explain:
.....
- 15.1 Has the reporting entity guaranteed any financed premium accounts? Yes [] No [X]
- 15.2 If yes, give full information
.....
- 16.1 Does the reporting entity write any warranty business? Yes [] No [X]
If yes, disclose the following information for each of the following types of warranty coverage:

	1 Direct Losses Incurred	2 Direct Losses Unpaid	3 Direct Written Premium	4 Direct Premium Unearned	5 Direct Premium Earned
16.11 Home
16.12 Products
16.13 Automobile
16.14 Other*

* Disclose type of coverage:
.....

GENERAL INTERROGATORIES

PART 2 - PROPERTY AND CASUALTY INTERROGATORIES

17.1 Does the reporting entity include amounts recoverable on unauthorized reinsurance in Schedule F - Part 3 that is exempt from the statutory provision for unauthorized reinsurance? Yes [] No [X]

Incurred but not reported losses on contracts in force prior to July 1, 1984, and not subsequently renewed are exempt from the statutory provision for unauthorized reinsurance. Provide the following information for this exemption:

17.11 Gross amount of unauthorized reinsurance in Schedule F - Part 3 exempt from the statutory provision for unauthorized reinsurance \$
 17.12 Unfunded portion of Interrogatory 17.11 \$
 17.13 Paid losses and loss adjustment expenses portion of Interrogatory 17.11... \$
 17.14 Case reserves portion of Interrogatory 17.11 \$
 17.15 Incurred but not reported portion of Interrogatory 17.11 \$
 17.16 Unearned premium portion of Interrogatory 17.11 \$
 17.17 Contingent commission portion of Interrogatory 17.11 \$

18.1 Do you act as a custodian for health savings accounts? Yes [] No [X]

18.2 If yes, please provide the amount of custodial funds held as of the reporting date. \$

18.3 Do you act as an administrator for health savings accounts? Yes [] No [X]

18.4 If yes, please provide the balance of funds administered as of the reporting date. \$

19. Is the reporting entity licensed or chartered, registered, qualified, eligible or writing business in at least two states? Yes [X] No []

19.1 If no, does the reporting entity assume reinsurance business that covers risks residing in at least one state other than the state of domicile of the reporting entity? Yes [] No []

ANNUAL STATEMENT FOR THE YEAR 2022 OF THE ProTucket Insurance Company

FIVE-YEAR HISTORICAL DATA

Show amounts in whole dollars only, no cents; show percentages to one decimal place, i.e. 17.6.

	1 2022	2 2021	3 2020	4 2019	5 2018
Gross Premiums Written (Page 8, Part 1B Cols. 1, 2 & 3)					
1. Liability lines (Lines 11, 16, 17, 18 & 19)	0	0	0	0	0
2. Property lines (Lines 1, 2, 9, 12, 21 & 26)	0	0	0	0	0
3. Property and liability combined lines (Lines 3, 4, 5, 8, 22 & 27)	0	0	0	0	0
4. All other lines (Lines 6, 10, 13, 14, 15, 23, 24, 28, 29, 30 & 34)	0	0	0	0	0
5. Nonproportional reinsurance lines (Lines 31, 32 & 33)	0	0	0	0	0
6. Total (Line 35)	0	0	0	0	0
Net Premiums Written (Page 8, Part 1B, Col. 6)					
7. Liability lines (Lines 11, 16, 17, 18 & 19)	0	0	0	0	0
8. Property lines (Lines 1, 2, 9, 12, 21 & 26)	0	0	0	0	0
9. Property and liability combined lines (Lines 3, 4, 5, 8, 22 & 27)	0	0	0	0	0
10. All other lines (Lines 6, 10, 13, 14, 15, 23, 24, 28, 29, 30 & 34)	0	0	0	0	0
11. Nonproportional reinsurance lines (Lines 31, 32 & 33)	0	0	0	0	0
12. Total (Line 35)	0	0	0	0	0
Statement of Income (Page 4)					
13. Net underwriting gain (loss) (Line 8)	(273,629)	0	7,234	(120,628)	215,428
14. Net investment gain (loss) (Line 11)	489,819	1,988	143,424	783,704	33,503
15. Total other income (Line 15)	274,320	0	0	0	0
16. Dividends to policyholders (Line 17)				0	0
17. Federal and foreign income taxes incurred (Line 19)	103,007	430	31,679	139,246	51,138
18. Net income (Line 20)	387,503	1,558	118,979	523,830	197,793
Balance Sheet Lines (Pages 2 and 3)					
19. Total admitted assets excluding protected cell business (Page 2, Line 26, Col. 3)	53,372,558	58,832,280	63,761,124	38,988,810	3,196,046
20. Premiums and considerations (Page 2, Col. 3)					
20.1 In course of collection (Line 15.1)	0	0	0	0	0
20.2 Deferred and not yet due (Line 15.2)	0	0	0	0	0
20.3 Accrued retrospective premiums (Line 15.3)	0	0	0	0	0
21. Total liabilities excluding protected cell business (Page 3, Line 26)	13,936,928	19,784,153	24,714,568	61,232	29,685
22. Losses (Page 3, Line 1)				0	0
23. Loss adjustment expenses (Page 3, Line 3)				0	0
24. Unearned premiums (Page 3, Line 9)				0	0
25. Capital paid up (Page 3, Lines 30 & 31)	2,500,000	2,500,000	2,500,000	1,000,000	1,000,000
26. Surplus as regards policyholders (Page 3, Line 37)	39,435,630	39,048,127	39,046,556	38,927,578	38,403,747
Cash Flow (Page 5)					
27. Net cash from operations (Line 11)	502,455	7,860	12,971	865,114	(105,655)
Risk-Based Capital Analysis					
28. Total adjusted capital	39,435,630	39,048,127	39,046,556	38,927,578	38,403,747
29. Authorized control level risk-based capital	104,132	142,205	242,350	80,723	24,279
Percentage Distribution of Cash, Cash Equivalents and Invested Assets (Page 2, Col. 3) (Line divided by Page 2, Line 12, Col. 3) x100.0					
30. Bonds (Line 1)	0.9	0.5	0.3	0.0	0.0
31. Stocks (Lines 2.1 & 2.2)	0.0	0.0	0.0	0.0	0.0
32. Mortgage loans on real estate (Lines 3.1 and 3.2)	0.0	0.0	0.0	0.0	0.0
33. Real estate (Lines 4.1, 4.2 & 4.3)	0.0	0.0	0.0	0.0	0.0
34. Cash, cash equivalents and short-term investments (Line 5)	99.1	99.5	99.7	100.0	100.0
35. Contract loans (Line 6)	0.0	0.0	0.0	0.0	0.0
36. Derivatives (Line 7)	0.0	0.0	0.0	0.0	0.0
37. Other invested assets (Line 8)	0.0	0.0	0.0	0.0	0.0
38. Receivables for securities (Line 9)	0.0	0.0	0.0	0.0	0.0
39. Securities lending reinvested collateral assets (Line 10)	0.0	0.0	0.0	0.0	0.0
40. Aggregate write-ins for invested assets (Line 11)	0.0	0.0	0.0	0.0	0.0
41. Cash, cash equivalents and invested assets (Line 12)	100.0	100.0	100.0	100.0	100.0
Investments in Parent, Subsidiaries and Affiliates					
42. Affiliated bonds (Schedule D, Summary, Line 12, Col. 1)	0	0	0	0	0
43. Affiliated preferred stocks (Schedule D, Summary, Line 18, Col. 1)	0	0	0	0	0
44. Affiliated common stocks (Schedule D, Summary, Line 24, Col. 1)	0	0	0	0	0
45. Affiliated short-term investments (subtotals included in Schedule DA Verification, Col. 5, Line 10)	0	0	0	0	0
46. Affiliated mortgage loans on real estate					
47. All other affiliated					
48. Total of above Lines 42 to 47	0	0	0	0	0
49. Total Investment in Parent included in Lines 42 to 47 above					
50. Percentage of investments in parent, subsidiaries and affiliates to surplus as regards policyholders (Line 48 above divided by Page 3, Col. 1, Line 37 x 100.0)	0.0	0.0	0.0	0.0	0.0

ANNUAL STATEMENT FOR THE YEAR 2022 OF THE ProTucket Insurance Company

FIVE-YEAR HISTORICAL DATA

(Continued)

	1 2022	2 2021	3 2020	4 2019	5 2018
Capital and Surplus Accounts (Page 4)					
51. Net unrealized capital gains (losses) (Line 24)				0	0
52. Dividends to stockholders (Line 35)				0	0
53. Change in surplus as regards policyholders for the year (Line 38)	387,503	1,571	118,979	523,830	35,397,793
Gross Losses Paid (Page 9, Part 2, Cols. 1 & 2)					
54. Liability lines (Lines 11, 16, 17, 18 & 19)	0	0	0	0	0
55. Property lines (Lines 1, 2, 9, 12, 21 & 26)	0	0	0	0	0
56. Property and liability combined lines (Lines 3, 4, 5, 8, 22 & 27)	0	0	0	0	0
57. All other lines (Lines 6, 10, 13, 14, 15, 23, 24, 28, 29, 30 & 34)	0	0	0	0	0
58. Nonproportional reinsurance lines (Lines 31, 32 & 33)	0	0	0	0	0
59. Total (Line 35)	0	0	0	0	0
Net Losses Paid (Page 9, Part 2, Col. 4)					
60. Liability lines (Lines 11, 16, 17, 18 & 19)	0	0	0	0	0
61. Property lines (Lines 1, 2, 9, 12, 21 & 26)	0	0	0	0	0
62. Property and liability combined lines (Lines 3, 4, 5, 8, 22 & 27)	0	0	0	0	0
63. All other lines (Lines 6, 10, 13, 14, 15, 23, 24, 28, 29, 30 & 34)	0	0	0	0	0
64. Nonproportional reinsurance lines (Lines 31, 32 & 33)	0	0	0	0	0
65. Total (Line 35)	0	0	0	0	0
Operating Percentages (Page 4) (Line divided by Page 4, Line 1) x 100.0					
66. Premiums earned (Line 1)	100.0	100.0	100.0	100.0	100.0
67. Losses incurred (Line 2)	0.0	0.0	0.0	0.0	0.0
68. Loss expenses incurred (Line 3)	0.0	0.0	0.0	0.0	0.0
69. Other underwriting expenses incurred (Line 4)	0.0	0.0	0.0	0.0	0.0
70. Net underwriting gain (loss) (Line 8)	0.0	0.0	0.0	0.0	0.0
Other Percentages					
71. Other underwriting expenses to net premiums written (Page 4, Lines 4 + 5 - 15 divided by Page 8, Part 1B, Col. 6, Line 35 x 100.0)	0.0	0.0	0.0	0.0	0.0
72. Losses and loss expenses incurred to premiums earned (Page 4, Lines 2 + 3 divided by Page 4, Line 1 x 100.0)	0.0	0.0	0.0	0.0	0.0
73. Net premiums written to policyholders' surplus (Page 8, Part 1B, Col. 6, Line 35 divided by Page 3, Line 37, Col. 1 x 100.0)	0.0	0.0	0.0	0.0	0.0
One Year Loss Development (\$000 omitted)					
74. Development in estimated losses and loss expenses incurred prior to current year (Schedule P - Part 2 - Summary, Line 12, Col. 11)			0	0	0
75. Percent of development of losses and loss expenses incurred to policyholders' surplus of prior year end (Line 74 above divided by Page 4, Line 21, Col. 1 x 100.0).....	0.0	0.0	0.0	0.0	0.0
Two Year Loss Development (\$000 omitted)					
76. Development in estimated losses and loss expenses incurred two years before the current year and prior year (Schedule P, Part 2 - Summary, Line 12, Col. 12)			0	0	0
77. Percent of development of losses and loss expenses incurred to reported policyholders' surplus of second prior year end (Line 76 above divided by Page 4, Line 21, Col. 2 x 100.0)	0.0	0.0	0.0	0.0	0.0

NOTE: If a party to a merger, have the two most recent years of this exhibit been restated due to a merger in compliance with the disclosure requirements of SSAP No. 3, Accounting Changes and Correction of Errors? Yes [] No []
 If no, please explain:

Schedule P - Part 1 - Summary

NONE

Schedule P - Part 2 - Summary

NONE

Schedule P - Part 3 - Summary

NONE

Schedule P - Part 4 - Summary

NONE

SCHEDULE T - EXHIBIT OF PREMIUMS WRITTEN

Allocated by States and Territories

States, Etc.	1 Active Status (a)	Gross Premiums, Including Policy and Membership Fees, Less Return Premiums and Premiums on Policies Not Taken		4 Dividends Paid or Credited to Policyholders on Direct Business	5 Direct Losses Paid (Deducting Salvage)	6 Direct Losses Incurred	7 Direct Losses Unpaid	8 Finance and Service Charges Not Included in Premiums	9 Direct Premiums Written for Federal Purchasing Groups (Included in Column 2)
		2 Direct Premiums Written	3 Direct Premiums Earned						
1. Alabama	AL	Q							
2. Alaska	AK	N							
3. Arizona	AZ	L	0	0	0	0	0	0	
4. Arkansas	AR	L	0	0	0	0	0	0	
5. California	CA	N							
6. Colorado	CO	N							
7. Connecticut	CT	Q							
8. Delaware	DE	Q							
9. District of Columbia	DC	N							
10. Florida	FL	N							
11. Georgia	GA	N							
12. Hawaii	HI	Q							
13. Idaho	ID	Q							
14. Illinois	IL	Q							
15. Indiana	IN	L	0	0	0	0	0	0	
16. Iowa	IA	N							
17. Kansas	KS	N							
18. Kentucky	KY	N							
19. Louisiana	LA	L	0	0	0	0	0	0	
20. Maine	ME	Q							
21. Maryland	MD	L	0	0	0	0	0	0	
22. Massachusetts	MA	Q							
23. Michigan	MI	L	0	0	0	0	0	0	
24. Minnesota	MN	N							
25. Mississippi	MS	Q							
26. Missouri	MO	L	0	0	0	0	0	0	
27. Montana	MT	L	0	0	0	0	0	0	
28. Nebraska	NE	Q	0	0	0	0	0	0	
29. Nevada	NV	L	0	0	0	0	0	0	
30. New Hampshire	NH	Q							
31. New Jersey	NJ	Q							
32. New Mexico	NM	N							
33. New York	NY	N							
34. North Carolina	NC	N							
35. North Dakota	ND	Q							
36. Ohio	OH	L	0	0	0	0	0	0	
37. Oklahoma	OK	L	0	0	0	0	0	0	
38. Oregon	OR	N							
39. Pennsylvania	PA	Q							
40. Rhode Island	RI	L	0	0	0	0	0	0	
41. South Carolina	SC	Q							
42. South Dakota	SD	L	0	0	0	0	0	0	
43. Tennessee	TN	Q							
44. Texas	TX	L	0	0	0	0	0	0	
45. Utah	UT	L	0	0	0	0	0	0	
46. Vermont	VT	L	0	0	0	0	0	0	
47. Virginia	VA	N							
48. Washington	WA	Q							
49. West Virginia	WV	L	0	0	0	0	0	0	
50. Wisconsin	WI	Q							
51. Wyoming	WY	N							
52. American Samoa	AS	N							
53. Guam	GU	N							
54. Puerto Rico	PR	N							
55. U.S. Virgin Islands	VI	N							
56. Northern Mariana Islands	MP	N							
57. Canada	CAN	N							
58. Aggregate other alien	OT	XXX	0	0	0	0	0	0	0
59. Totals	XXX	0	0	0	0	0	0	0	0
DETAILS OF WRITE-INS									
58001.		XXX							
58002.		XXX							
58003.		XXX							
58998. Summary of remaining write-ins for Line 58 from overflow page		XXX	0	0	0	0	0	0	0
58999. Totals (Lines 58001 through 58003 plus 58998)(Line 58 above)		XXX	0	0	0	0	0	0	0

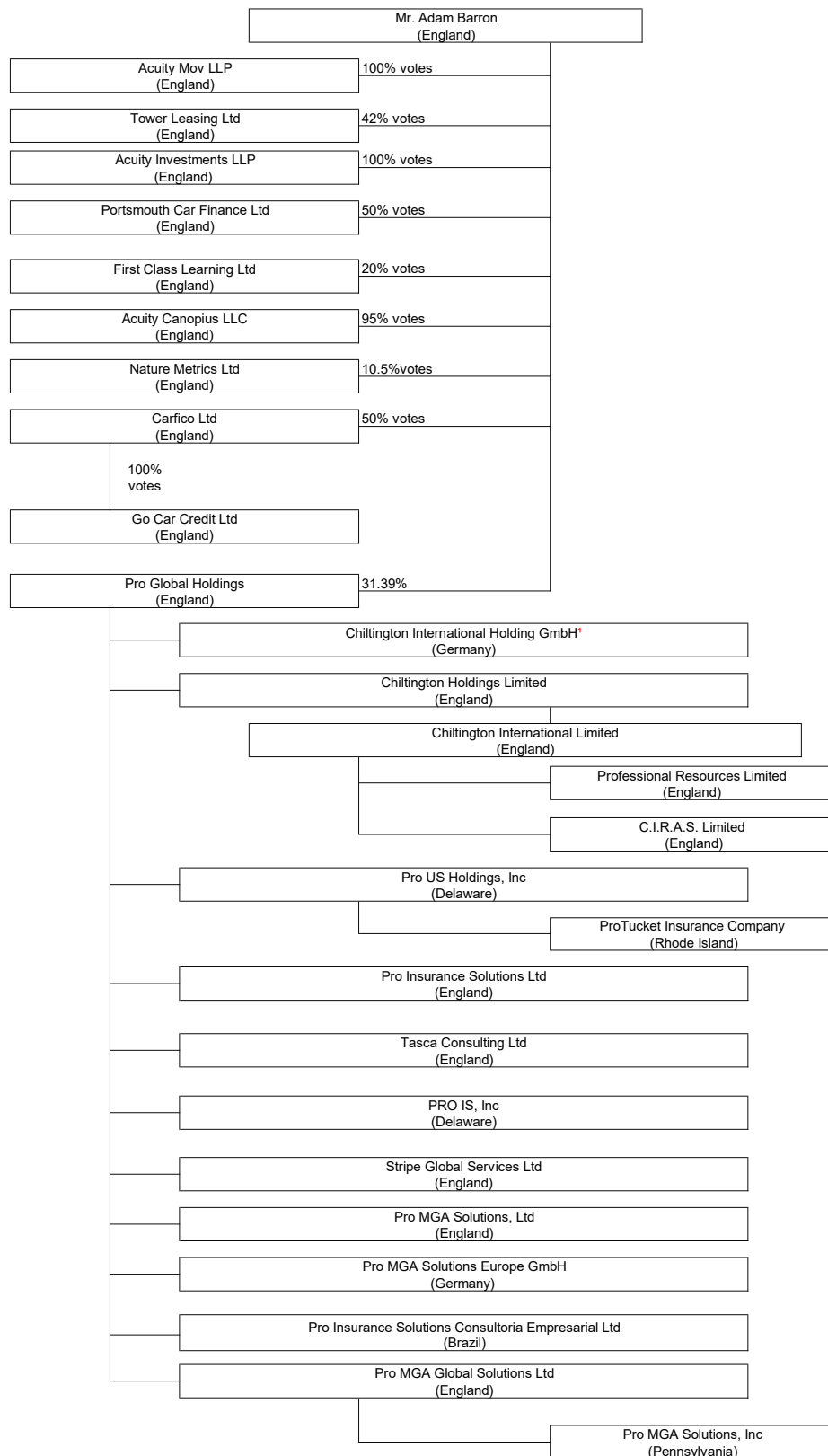
(a) Active Status Counts:

- 1. L - Licensed or Chartered - Licensed insurance carrier or domiciled RRG.....17
- 2. R - Registered - Non-domiciled RRGs.....0
- 3. E - Eligible - Reporting entities eligible or approved to write surplus lines in the state (other than their state of domicile - see DSLI).....0
- 4. Q - Qualified - Qualified or accredited reinsurer.....18
- 5. D - Domestic Surplus Lines Insurer (DSLII) - Reporting entities authorized to write surplus lines in the state of domicile.....0
- 6. N - None of the above - Not allowed to write business in the state.....22

(b) Explanation of basis of allocation of premiums by states, etc.

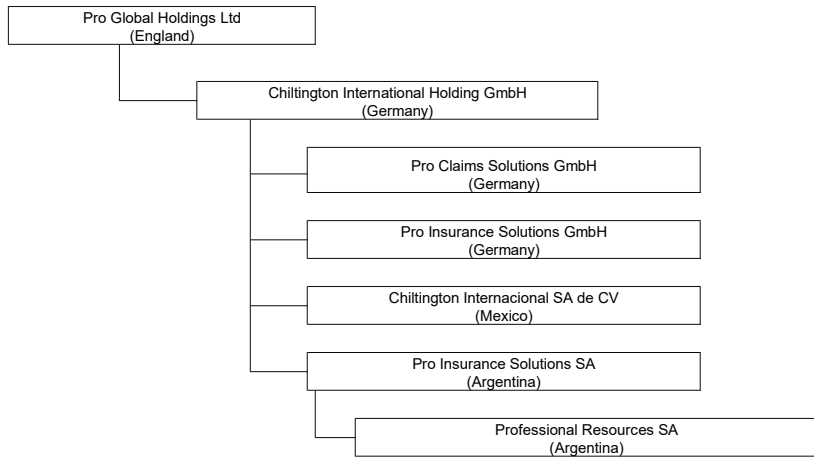
No Premiums or Losses to allocate.

ANNUAL STATEMENT FOR THE YEAR 2022 OF THE ProTucket Insurance Company



FN 1 - See Appendix 1 for subsidiaries of Chilton International Holdings GmbH

ANNUAL STATEMENT FOR THE YEAR 2022 OF THE ProTucket Insurance Company



OVERFLOW PAGE FOR WRITE-INS

Additional Write-ins for Liabilities Line 25

	1 Current Year	2 Prior Year
2504. Funds Held under Retroactive Reinsurance Treaties	13,762,706	19,602,404
2505. Other Liabilities	7,565	17,759
2597. Summary of remaining write-ins for Line 25 from overflow page	13,770,271	19,620,163