



PROPERTY AND CASUALTY COMPANIES - ASSOCIATION EDITION

ANNUAL STATEMENT

FOR THE YEAR ENDED DECEMBER 31, 2023
OF THE CONDITION AND AFFAIRS OF THE

Pawtucket Insurance Company

NAIC Group Code 4861 4861 NAIC Company Code 14931 Employer's ID Number 05-0197250
(Current) (Prior)

Organized under the Laws of Rhode Island, State of Domicile or Port of Entry RI
Country of Domicile United States of America

Incorporated/Organized 06/19/1848 Commenced Business 02/10/1849

Statutory Home Office 1301 Atwood Ave, Suite 316E, Johnston, RI, US 02919
(Street and Number) (City or Town, State, Country and Zip Code)

Main Administrative Office 1301 Atwood Ave, Suite 316E
(Street and Number)
Johnston, RI, US 02919 401-725-5600
(City or Town, State, Country and Zip Code) (Area Code) (Telephone Number)

Mail Address P.O. Box 9950, Providence, RI, US 02940
(Street and Number or P.O. Box) (City or Town, State, Country and Zip Code)

Primary Location of Books and Records 1301 Atwood Ave, Suite 316E
(Street and Number)
Johnston, RI, US 02919 401-725-5600
(City or Town, State, Country and Zip Code) (Area Code) (Telephone Number)

Internet Website Address www.nbic.com

Statutory Statement Contact Michael McNamara, 401-495-8925
(Name) (Area Code) (Telephone Number)
mmcnamara@nbic.com 401-495-8914
(E-mail Address) (FAX Number)

OFFICERS

Chief Executive Officer Ernie Jose Garateix President Timothy Michael Moura
Chief Financial Officer Kirk Howard Lusk Secretary Kirk Howard Lusk

OTHER

DIRECTORS OR TRUSTEES

Ernie Jose Garateix Richard Alexander Widdicombe Vijay Shankarrao Walvekar
Irini Barlas Joseph Shanju Vattamattam

State of Rhode Island SS
County of Providence

The officers of this reporting entity being duly sworn, each depose and say that they are the described officers of said reporting entity, and that on the reporting period stated above, all of the herein described assets were the absolute property of the said reporting entity, free and clear from any liens or claims thereon, except as herein stated, and that this statement, together with related exhibits, schedules and explanations therein contained, annexed or referred to, is a full and true statement of all the assets and liabilities and of the condition and affairs of the said reporting entity as of the reporting period stated above, and of its income and deductions therefrom for the period ended, and have been completed in accordance with the NAIC Annual Statement Instructions and Accounting Practices and Procedures manual except to the extent that: (1) state law may differ; or, (2) that state rules or regulations require differences in reporting not related to accounting practices and procedures, according to the best of their information, knowledge and belief, respectively. Furthermore, the scope of this attestation by the described officers also includes the related corresponding electronic filing with the NAIC, when required, that is an exact copy (except for formatting differences due to electronic filing) of the enclosed statement. The electronic filing may be requested by various regulators in lieu of or in addition to the enclosed statement.

Ernie Jose Garateix
Chief Executive Officer

Kirk Howard Lusk
Chief Financial Officer

Timothy Michael Moura
President

Subscribed and sworn to before me this 26 day of February 2024

- a. Is this an original filing? Yes [X] No []
b. If no,
1. State the amendment number.....
2. Date filed
3. Number of pages attached.....

Kristin Arias
Notary Public
06/10/2026

ANNUAL STATEMENT FOR THE YEAR 2023 OF THE Pawtucket Insurance Company

ASSETS

	Current Year			Prior Year
	1 Assets	2 Nonadmitted Assets	3 Net Admitted Assets (Cols. 1 - 2)	4 Net Admitted Assets
1. Bonds (Schedule D)			0	0
2. Stocks (Schedule D):				
2.1 Preferred stocks			0	0
2.2 Common stocks			0	0
3. Mortgage loans on real estate (Schedule B):				
3.1 First liens			0	0
3.2 Other than first liens			0	0
4. Real estate (Schedule A):				
4.1 Properties occupied by the company (less \$ encumbrances)			0	0
4.2 Properties held for the production of income (less \$ encumbrances)			0	0
4.3 Properties held for sale (less \$ encumbrances)			0	0
5. Cash (\$ 3,881,697 , Schedule E - Part 1), cash equivalents (\$ 389,177 , Schedule E - Part 2) and short-term investments (\$, Schedule DA)	4,270,874		4,270,874	4,090,362
6. Contract loans (including \$ premium notes)			0	0
7. Derivatives (Schedule DB)			0	0
8. Other invested assets (Schedule BA)			0	0
9. Receivable for securities			0	0
10. Securities lending reinvested collateral assets (Schedule DL)			0	0
11. Aggregate write-ins for invested assets	0	0	0	0
12. Subtotals, cash and invested assets (Lines 1 to 11)	4,270,874	0	4,270,874	4,090,362
13. Title plants less \$ charged off (for Title insurers only)			0	0
14. Investment income due and accrued			0	0
15. Premiums and considerations:				
15.1 Uncollected premiums and agents' balances in the course of collection			0	0
15.2 Deferred premiums, agents' balances and installments booked but deferred and not yet due (including \$ earned but unbilled premiums)			0	0
15.3 Accrued retrospective premiums (\$) and contracts subject to redetermination (\$)			0	0
16. Reinsurance:				
16.1 Amounts recoverable from reinsurers			0	0
16.2 Funds held by or deposited with reinsured companies			0	0
16.3 Other amounts receivable under reinsurance contracts			0	0
17. Amounts receivable relating to uninsured plans			0	0
18.1 Current federal and foreign income tax recoverable and interest thereon			0	0
18.2 Net deferred tax asset			0	0
19. Guaranty funds receivable or on deposit			0	0
20. Electronic data processing equipment and software			0	0
21. Furniture and equipment, including health care delivery assets (\$)			0	0
22. Net adjustment in assets and liabilities due to foreign exchange rates			0	0
23. Receivables from parent, subsidiaries and affiliates			0	7,941
24. Health care (\$) and other amounts receivable			0	0
25. Aggregate write-ins for other than invested assets	0	0	0	0
26. Total assets excluding Separate Accounts, Segregated Accounts and Protected Cell Accounts (Lines 12 to 25)	4,270,874	0	4,270,874	4,098,303
27. From Separate Accounts, Segregated Accounts and Protected Cell Accounts			0	0
28. Total (Lines 26 and 27)	4,270,874	0	4,270,874	4,098,303
DETAILS OF WRITE-INS				
1101.			0	0
1102.			0	0
1103.			0	0
1198. Summary of remaining write-ins for Line 11 from overflow page	0	0	0	0
1199. Totals (Lines 1101 thru 1103 plus 1198)(Line 11 above)	0	0	0	0
2501.			0	0
2502.			0	0
2503.			0	0
2598. Summary of remaining write-ins for Line 25 from overflow page	0	0	0	0
2599. Totals (Lines 2501 thru 2503 plus 2598)(Line 25 above)	0	0	0	0

ANNUAL STATEMENT FOR THE YEAR 2023 OF THE Pawtucket Insurance Company

LIABILITIES, SURPLUS AND OTHER FUNDS

	1 Current Year	2 Prior Year
1. Losses (Part 2A, Line 35, Column 8)		
2. Reinsurance payable on paid losses and loss adjustment expenses (Schedule F, Part 1, Column 6)	0	0
3. Loss adjustment expenses (Part 2A, Line 35, Column 9)		
4. Commissions payable, contingent commissions and other similar charges		
5. Other expenses (excluding taxes, licenses and fees)		420
6. Taxes, licenses and fees (excluding federal and foreign income taxes)	5,791	221
7.1 Current federal and foreign income taxes (including \$ on realized capital gains (losses))	35,526	2,156
7.2 Net deferred tax liability	198	298
8. Borrowed money \$ and interest thereon \$		
9. Unearned premiums (Part 1A, Line 38, Column 5) (after deducting unearned premiums for ceded reinsurance of \$0 and including warranty reserves of \$ and accrued accident and health experience rating refunds including \$0 for medical loss ratio rebate per the Public Health Service Act)		
10. Advance premium		
11. Dividends declared and unpaid:		
11.1 Stockholders		
11.2 Policyholders		
12. Ceded reinsurance premiums payable (net of ceding commissions)	0	0
13. Funds held by company under reinsurance treaties (Schedule F, Part 3, Column 20)	0	0
14. Amounts withheld or retained by company for account of others		
15. Remittances and items not allocated		
16. Provision for reinsurance (including \$0 certified) (Schedule F, Part 3, Column 78)	0	0
17. Net adjustments in assets and liabilities due to foreign exchange rates		
18. Drafts outstanding		
19. Payable to parent, subsidiaries and affiliates		
20. Derivatives	0	0
21. Payable for securities		
22. Payable for securities lending		
23. Liability for amounts held under uninsured plans		
24. Capital notes \$ and interest thereon \$		
25. Aggregate write-ins for liabilities	0	0
26. Total liabilities excluding protected cell liabilities (Lines 1 through 25)	41,515	3,095
27. Protected cell liabilities		
28. Total liabilities (Lines 26 and 27)	41,515	3,095
29. Aggregate write-ins for special surplus funds	0	0
30. Common capital stock	1,000,000	1,000,000
31. Preferred capital stock		
32. Aggregate write-ins for other than special surplus funds	0	0
33. Surplus notes	0	
34. Gross paid in and contributed surplus	2,000,000	2,000,000
35. Unassigned funds (surplus)	1,229,358	1,095,208
36. Less treasury stock, at cost:		
36.1 shares common (value included in Line 30 \$)		
36.2 shares preferred (value included in Line 31 \$)		
37. Surplus as regards policyholders (Lines 29 to 35, less 36) (Page 4, Line 39)	4,229,358	4,095,208
38. TOTALS (Page 2, Line 28, Col. 3)	4,270,873	4,098,303
DETAILS OF WRITE-INS		
2501.		0
2502.		0
2503.		0
2598. Summary of remaining write-ins for Line 25 from overflow page	0	0
2599. Totals (Lines 2501 thru 2503 plus 2598)(Line 25 above)	0	0
2901.		0
2902.		0
2903.		0
2998. Summary of remaining write-ins for Line 29 from overflow page	0	0
2999. Totals (Lines 2901 thru 2903 plus 2998)(Line 29 above)	0	0
3201.		0
3202.		0
3203.		0
3298. Summary of remaining write-ins for Line 32 from overflow page	0	0
3299. Totals (Lines 3201 thru 3203 plus 3298)(Line 32 above)	0	0

ANNUAL STATEMENT FOR THE YEAR 2023 OF THE Pawtucket Insurance Company

STATEMENT OF INCOME

	1 Current Year	2 Prior Year
UNDERWRITING INCOME		
1. Premiums earned (Part 1, Line 35, Column 4).....		
DEDUCTIONS:		
2. Losses incurred (Part 2, Line 35, Column 7)	(2,844)	(3,576)
3. Loss adjustment expenses incurred (Part 3, Line 25, Column 1)	0	0
4. Other underwriting expenses incurred (Part 3, Line 25, Column 2)	25,123	41,395
5. Aggregate write-ins for underwriting deductions	0	0
6. Total underwriting deductions (Lines 2 through 5)	22,279	37,819
7. Net income of protected cells		
8. Net underwriting gain (loss) (Line 1 minus Line 6 plus Line 7)	(22,279)	(37,819)
INVESTMENT INCOME		
9. Net investment income earned (Exhibit of Net Investment Income, Line 17)	191,772	47,204
10. Net realized capital gains (losses) less capital gains tax of \$ (Exhibit of Capital Gains (Losses))		
11. Net investment gain (loss) (Lines 9 + 10)	191,772	47,204
OTHER INCOME		
12. Net gain (loss) from agents' or premium balances charged off (amount recovered \$ amount charged off \$)	0	0
13. Finance and service charges not included in premiums		
14. Aggregate write-ins for miscellaneous income	0	0
15. Total other income (Lines 12 through 14)	0	0
16. Net income before dividends to policyholders, after capital gains tax and before all other federal and foreign income taxes (Lines 8 + 11 + 15)	169,493	9,385
17. Dividends to policyholders		
18. Net income, after dividends to policyholders, after capital gains tax and before all other federal and foreign income taxes (Line 16 minus Line 17)	169,493	9,385
19. Federal and foreign income taxes incurred	35,443	2,157
20. Net income (Line 18 minus Line 19)(to Line 22)	134,050	7,228
CAPITAL AND SURPLUS ACCOUNT		
21. Surplus as regards policyholders, December 31 prior year (Page 4, Line 39, Column 2)	4,095,208	4,086,879
22. Net income (from Line 20)	134,050	7,228
23. Net transfers (to) from Protected Cell accounts		
24. Change in net unrealized capital gains or (losses) less capital gains tax of \$		2
25. Change in net unrealized foreign exchange capital gain (loss)		
26. Change in net deferred income tax	100	99
27. Change in nonadmitted assets (Exhibit of Nonadmitted Assets, Line 28, Col. 3)	0	1,000
28. Change in provision for reinsurance (Page 3, Line 16, Column 2 minus Column 1)	0	0
29. Change in surplus notes		
30. Surplus (contributed to) withdrawn from protected cells		
31. Cumulative effect of changes in accounting principles		
32. Capital changes:		
32.1 Paid in		
32.2 Transferred from surplus (Stock Dividend)		
32.3 Transferred to surplus		
33. Surplus adjustments:		
33.1 Paid in	0	0
33.2 Transferred to capital (Stock Dividend)		
33.3 Transferred from capital		
34. Net remittances from or (to) Home Office		
35. Dividends to stockholders		
36. Change in treasury stock (Page 3, Lines 36.1 and 36.2, Column 2 minus Column 1)	0	0
37. Aggregate write-ins for gains and losses in surplus	0	0
38. Change in surplus as regards policyholders for the year (Lines 22 through 37)	134,150	8,329
39. Surplus as regards policyholders, December 31 current year (Line 21 plus Line 38) (Page 3, Line 37)	4,229,358	4,095,208
DETAILS OF WRITE-INS		
0501.		0
0502.		0
0503.		0
0598. Summary of remaining write-ins for Line 5 from overflow page	0	0
0599. Totals (Lines 0501 thru 0503 plus 0598)(Line 5 above)	0	0
1401.		0
1402.		0
1403.		0
1498. Summary of remaining write-ins for Line 14 from overflow page	0	0
1499. Totals (Lines 1401 thru 1403 plus 1498)(Line 14 above)	0	0
3701.		0
3702.		0
3703.		0
3798. Summary of remaining write-ins for Line 37 from overflow page	0	0
3799. Totals (Lines 3701 thru 3703 plus 3798)(Line 37 above)	0	0

ANNUAL STATEMENT FOR THE YEAR 2023 OF THE Pawtucket Insurance Company

CASH FLOW

	1	2
	Current Year	Prior Year
Cash from Operations		
1. Premiums collected net of reinsurance	0	0
2. Net investment income	191,772	47,204
3. Miscellaneous income	0	0
4. Total (Lines 1 through 3)	191,772	47,204
5. Benefit and loss related payments	(2,844)	(3,576)
6. Net transfers to Separate Accounts, Segregated Accounts and Protected Cell Accounts	0	0
7. Commissions, expenses paid and aggregate write-ins for deductions	19,973	39,919
8. Dividends paid to policyholders	0	0
9. Federal and foreign income taxes paid (recovered) net of \$ tax on capital gains (losses)	2,073	(7,106)
10. Total (Lines 5 through 9)	19,202	29,237
11. Net cash from operations (Line 4 minus Line 10)	172,570	17,967
Cash from Investments		
12. Proceeds from investments sold, matured or repaid:		
12.1 Bonds	0	0
12.2 Stocks	0	0
12.3 Mortgage loans	0	0
12.4 Real estate	0	0
12.5 Other invested assets	0	0
12.6 Net gains or (losses) on cash, cash equivalents and short-term investments	0	0
12.7 Miscellaneous proceeds	0	0
12.8 Total investment proceeds (Lines 12.1 to 12.7)	0	0
13. Cost of investments acquired (long-term only):		
13.1 Bonds	0	0
13.2 Stocks	0	0
13.3 Mortgage loans	0	0
13.4 Real estate	0	0
13.5 Other invested assets	0	0
13.6 Miscellaneous applications	0	0
13.7 Total investments acquired (Lines 13.1 to 13.6)	0	0
14. Net increase/(decrease) in contract loans and premium notes	0	0
15. Net cash from investments (Line 12.8 minus Line 13.7 minus Line 14)	0	0
Cash from Financing and Miscellaneous Sources		
16. Cash provided (applied):		
16.1 Surplus notes, capital notes	0	0
16.2 Capital and paid in surplus, less treasury stock	0	0
16.3 Borrowed funds	0	0
16.4 Net deposits on deposit-type contracts and other insurance liabilities	0	0
16.5 Dividends to stockholders	0	0
16.6 Other cash provided (applied)	7,941	(6,940)
17. Net cash from financing and miscellaneous sources (Lines 16.1 to 16.4 minus Line 16.5 plus Line 16.6)	7,941	(6,940)
RECONCILIATION OF CASH, CASH EQUIVALENTS AND SHORT-TERM INVESTMENTS		
18. Net change in cash, cash equivalents and short-term investments (Line 11, plus Lines 15 and 17)	180,511	11,027
19. Cash, cash equivalents and short-term investments:		
19.1 Beginning of year	4,090,362	4,079,335
19.2 End of period (Line 18 plus Line 19.1)	4,270,873	4,090,362

Note: Supplemental disclosures of cash flow information for non-cash transactions:

--	--	--

Underwriting and Investment Exhibit - Part 1 - Premiums Earned

N O N E

Underwriting and Investment Exhibit - Part 1A - Recapitulation of all Premiums

N O N E

Underwriting and Investment Exhibit - Part 1B - Premiums Written

N O N E

ANNUAL STATEMENT FOR THE YEAR 2023 OF THE Pawtucket Insurance Company

UNDERWRITING AND INVESTMENT EXHIBIT

PART 2 - LOSSES PAID AND INCURRED

Line of Business	Losses Paid Less Salvage				5 Net Losses Unpaid Current Year (Part 2A , Col. 8)	6 Net Losses Unpaid Prior Year	7 Losses Incurred Current Year (Cols. 4 + 5 - 6)	8 Percentage of Losses Incurred (Col. 7, Part 2) to Premiums Earned (Col. 4, Part 1)
	1 Direct Business	2 Reinsurance Assumed	3 Reinsurance Recovered	4 Net Payments (Cols. 1 + 2 - 3)				
1. Fire	0			0			0.0	
2.1 Allied lines	0			0			0.0	
2.2 Multiple peril crop	0			0			0.0	
2.3 Federal flood	0			0			0.0	
2.4 Private crop	0			0			0.0	
2.5 Private flood	0			0			0.0	
3. Farmowners multiple peril	0			0			0.0	
4. Homeowners multiple peril	(2,844)			(2,844)		(2,844)	0.0	
5.1 Commercial multiple peril (non-liability portion)	0			0			0.0	
5.2 Commercial multiple peril (liability portion)	0			0			0.0	
6. Mortgage guaranty	0			0			0.0	
8. Ocean marine	0			0			0.0	
9. Inland marine	0			0			0.0	
10. Financial guaranty	0			0			0.0	
11.1 Medical professional liability - occurrence	0			0			0.0	
11.2 Medical professional liability - claims-made	0			0			0.0	
12. Earthquake	0			0			0.0	
13.1 Comprehensive (hospital and medical) individual	0			0			0.0	
13.2 Comprehensive (hospital and medical) group	0			0			0.0	
14. Credit accident and health (group and individual)	0			0			0.0	
15.1 Vision only	0			0			0.0	
15.2 Dental only	0			0			0.0	
15.3 Disability income	0			0			0.0	
15.4 Medicare supplement	0			0			0.0	
15.5 Medicaid Title XIX	0			0			0.0	
15.6 Medicare Title XVIII	0			0			0.0	
15.7 Long-term care	0			0			0.0	
15.8 Federal employees health benefits plan	0			0			0.0	
15.9 Other health	0			0			0.0	
16. Workers' compensation	0			0			0.0	
17.1 Other liability - occurrence	0			0			0.0	
17.2 Other liability - claims-made	0			0			0.0	
17.3 Excess workers' compensation	0			0			0.0	
18.1 Products liability - occurrence	0			0			0.0	
18.2 Products liability - claims-made	0			0			0.0	
19.1 Private passenger auto no-fault (personal injury protection)	0			0			0.0	
19.2 Other private passenger auto liability	0			0			0.0	
19.3 Commercial auto no-fault (personal injury protection)	0			0			0.0	
19.4 Other commercial auto liability	0			0			0.0	
21.1 Private passenger auto physical damage	0			0			0.0	
21.2 Commercial auto physical damage	0			0			0.0	
22. Aircraft (all perils)	0			0			0.0	
23. Fidelity	0			0			0.0	
24. Surety	0			0			0.0	
26. Burglary and theft	0			0			0.0	
27. Boiler and machinery	0			0			0.0	
28. Credit	0			0			0.0	
29. International	0			0			0.0	
30. Warranty	0			0			0.0	
31. Reinsurance - nonproportional assumed property	XXX			0			0.0	
32. Reinsurance - nonproportional assumed liability	XXX			0			0.0	
33. Reinsurance - nonproportional assumed financial lines	XXX			0			0.0	
34. Aggregate write-ins for other lines of business	0	0	0	0	0	0	0.0	
35. TOTALS	(2,844)	0	0	(2,844)	0	(2,844)	0.0	
DETAILS OF WRITE-INS								
3401.				0	0	0		
3402.				0	0	0		
3403.				0	0	0		
3498. Summary of remaining write-ins for Line 34 from overflow page	0	0	0	0	0	0		
3499. Totals (Lines 3401 thru 3403 plus 3498)(Line 34 above)	0	0	0	0	0	0	0.0	

ANNUAL STATEMENT FOR THE YEAR 2023 OF THE Pawtucket Insurance Company

UNDERWRITING AND INVESTMENT EXHIBIT

PART 2A - UNPAID LOSSES AND LOSS ADJUSTMENT EXPENSES

Line of Business	Reported Losses				Incurred But Not Reported			8 Net Losses Unpaid (Cols. 4 + 5 + 6 - 7)	9 Net Unpaid Loss Adjustment Expenses
	1 Direct	2 Reinsurance Assumed	3 Deduct Reinsurance Recoverable	4 Net Losses Excl. Incurred But Not Reported (Cols. 1 + 2 - 3)	5 Direct	6 Reinsurance Assumed	7 Reinsurance Ceded		
1. Fire									
2.1 Allied lines									
2.2 Multiple peril crop									
2.3 Federal flood									
2.4 Private crop									
2.5 Private flood									
3. Farmowners multiple peril									
4. Homeowners multiple peril									
5.1 Commercial multiple peril (non-liability portion)									
5.2 Commercial multiple peril (liability portion)									
6. Mortgage guaranty									
8. Ocean marine									
9. Inland marine									
10. Financial guaranty									
11.1 Medical professional liability - occurrence									
11.2 Medical professional liability - claims-made									
12. Earthquake									
13.1 Comprehensive (hospital and medical) individual								(a)	
13.2 Comprehensive (hospital and medical) group								(a)	
14. Credit accident and health (group and individual)									
15.1 Vision only								(a)	
15.2 Dental only								(a)	
15.3 Disability income								(a)	
15.4 Medicare supplement								(a)	
15.5 Medicaid Title XIX								(a)	
15.6 Medicare Title XVIII								(a)	
15.7 Long-term care								(a)	
15.8 Federal employees health benefits plan								(a)	
15.9 Other health								(a)	
16. Workers' compensation									
17.1 Other liability - occurrence									
17.2 Other liability - claims-made									
17.3 Excess workers' compensation									
18.1 Products liability - occurrence									
18.2 Products liability - claims-made									
19.1 Private passenger auto no-fault (personal injury protection)									
19.2 Other private passenger auto liability									
19.3 Commercial auto no-fault (personal injury protection)									
19.4 Other commercial auto liability									
21.1 Private passenger auto physical damage									
21.2 Commercial auto physical damage									
22. Aircraft (all perils)									
23. Fidelity									
24. Surety									
26. Burglary and theft									
27. Boiler and machinery									
28. Credit									
29. International									
30. Warranty									
31. Reinsurance - nonproportional assumed property	XXX				XXX				
32. Reinsurance - nonproportional assumed liability	XXX				XXX				
33. Reinsurance - nonproportional assumed financial lines	XXX				XXX				
34. Aggregate write-ins for other lines of business									
35. TOTALS									
DETAILS OF WRITE-INS									
3401.									
3402.									
3403.									
3498. Summary of remaining write-ins for Line 34 from overflow page									
3499. Totals (Lines 3401 thru 3403 plus 3498)(Line 34 above)									

NONE

(a) Including \$ for present value of life indemnity claims reported in Lines 13 and 15.

ANNUAL STATEMENT FOR THE YEAR 2023 OF THE Pawtucket Insurance Company

UNDERWRITING AND INVESTMENT EXHIBIT

PART 3 - EXPENSES

	1	2	3	4
	Loss Adjustment Expenses	Other Underwriting Expenses	Investment Expenses	Total
1. Claim adjustment services:				
1.1 Direct				0
1.2 Reinsurance assumed				0
1.3 Reinsurance ceded				0
1.4 Net claim adjustment service (1.1 + 1.2 - 1.3)	0	0	0	0
2. Commission and brokerage:				
2.1 Direct excluding contingent				0
2.2 Reinsurance assumed, excluding contingent				0
2.3 Reinsurance ceded, excluding contingent				0
2.4 Contingent - direct		(22,254)		(22,254)
2.5 Contingent - reinsurance assumed		240		240
2.6 Contingent - reinsurance ceded				0
2.7 Policy and membership fees				0
2.8 Net commission and brokerage (2.1 + 2.2 - 2.3 + 2.4 + 2.5 - 2.6 + 2.7) ..	0	(22,014)	0	(22,014)
3. Allowances to managers and agents				0
4. Advertising				0
5. Boards, bureaus and associations				0
6. Surveys and underwriting reports				0
7. Audit of assureds' records				0
8. Salary and related items:				
8.1 Salaries				0
8.2 Payroll taxes				0
9. Employee relations and welfare				0
10. Insurance				0
11. Directors' fees				0
12. Travel and travel items				0
13. Rent and rent items				0
14. Equipment				0
15. Cost or depreciation of EDP equipment and software				0
16. Printing and stationery				0
17. Postage, telephone and telegraph, exchange and express				0
18. Legal and auditing				0
19. Totals (Lines 3 to 18)	0	0	0	0
20. Taxes, licenses and fees:				
20.1 State and local insurance taxes deducting guaranty association credits of \$		5,339		5,339
20.2 Insurance department licenses and fees		41,798		41,798
20.3 Gross guaranty association assessments				0
20.4 All other (excluding federal and foreign income and real estate)				0
20.5 Total taxes, licenses and fees (20.1 + 20.2 + 20.3 + 20.4)	0	47,137	0	47,137
21. Real estate expenses				0
22. Real estate taxes				0
23. Reimbursements by uninsured plans				0
24. Aggregate write-ins for miscellaneous expenses	0	0	(191,772)	(191,772)
25. Total expenses incurred	0	25,123	(191,772) (a)	(166,649)
26. Less unpaid expenses - current year		5,903		5,903
27. Add unpaid expenses - prior year		333		333
28. Amounts receivable relating to uninsured plans, prior year				0
29. Amounts receivable relating to uninsured plans, current year				0
30. TOTAL EXPENSES PAID (Lines 25 - 26 + 27 - 28 + 29)	0	19,553	(191,772)	(172,219)
DETAILS OF WRITE-INS				
2401. Investment Fees			(191,772)	(191,772)
2402.				
2403.				
2498. Summary of remaining write-ins for Line 24 from overflow page	0	0	0	0
2499. Totals (Lines 2401 thru 2403 plus 2498)(Line 24 above)	0	0	(191,772)	(191,772)

(a) Includes management fees of \$ to affiliates and \$ to non-affiliates.

ANNUAL STATEMENT FOR THE YEAR 2023 OF THE Pawtucket Insurance Company

EXHIBIT OF NET INVESTMENT INCOME

	1	2
	Collected During Year	Earned During Year
1. U.S. Government bonds	(a)
1.1 Bonds exempt from U.S. tax	(a)
1.2 Other bonds (unaffiliated)	(a)
1.3 Bonds of affiliates	(a)
2.1 Preferred stocks (unaffiliated)	(b)
2.11 Preferred stocks of affiliates	(b)
2.2 Common stocks (unaffiliated)
2.21 Common stocks of affiliates
3. Mortgage loans	(c)
4. Real estate	(d)
5. Contract loans
6. Cash, cash equivalents and short-term investments	(e)
7. Derivative instruments	(f)
8. Other invested assets
9. Aggregate write-ins for investment income	0	0
10. Total gross investment income	0	0
11. Investment expenses	(g) (191,772)
12. Investment taxes, licenses and fees, excluding federal income taxes	(g) 0
13. Interest expense	(h)
14. Depreciation on real estate and other invested assets	(i)
15. Aggregate write-ins for deductions from investment income	0
16. Total deductions (Lines 11 through 15)	(191,772)
17. Net investment income (Line 10 minus Line 16)	191,772
DETAILS OF WRITE-INS		
0901.
0902.
0903.
0998. Summary of remaining write-ins for Line 9 from overflow page	0	0
0999. Totals (Lines 0901 thru 0903 plus 0998) (Line 9, above)	0	0
1501.
1502.
1503.
1598. Summary of remaining write-ins for Line 15 from overflow page	0
1599. Totals (Lines 1501 thru 1503 plus 1598) (Line 15, above)	0

- (a) Includes \$ 0 accrual of discount less \$ 0 amortization of premium and less \$ paid for accrued interest on purchases.
- (b) Includes \$ 0 accrual of discount less \$ 0 amortization of premium and less \$ paid for accrued dividends on purchases.
- (c) Includes \$ 0 accrual of discount less \$ 0 amortization of premium and less \$ paid for accrued interest on purchases.
- (d) Includes \$ for company's occupancy of its own buildings; and excludes \$ interest on encumbrances.
- (e) Includes \$ accrual of discount less \$ amortization of premium and less \$ paid for accrued interest on purchases.
- (f) Includes \$ accrual of discount less \$ amortization of premium.
- (g) Includes \$ investment expenses and \$ investment taxes, licenses and fees, excluding federal income taxes, attributable to segregated and Separate Accounts.
- (h) Includes \$ interest on surplus notes and \$ interest on capital notes.
- (i) Includes \$ 0 depreciation on real estate and \$ depreciation on other invested assets.

EXHIBIT OF CAPITAL GAINS (LOSSES)

	1	2	3	4	5
	Realized Gain (Loss) On Sales or Maturity	Other Realized Adjustments	Total Realized Capital Gain (Loss) (Columns 1 + 2)	Change in Unrealized Capital Gain (Loss)	Change in Unrealized Foreign Exchange Capital Gain (Loss)
1. U.S. Government bonds	0	0	0	0	0
1.1 Bonds exempt from U.S. tax	0	0	0	0	0
1.2 Other bonds (unaffiliated)	0	0	0	0	0
1.3 Bonds of affiliates	0	0	0	0	0
2.1 Preferred stocks (unaffiliated)	0	0	0	0	0
2.11 Preferred stocks of affiliates	0	0	0	0	0
2.2 Common stocks (unaffiliated)	0	0	0	0	0
2.21 Common stocks of affiliates	0	0	0	0	0
3. Mortgage loans	0	0	0	0	0
4. Real estate	0	0	0	0	0
5. Contract loans	0	0	0	0	0
6. Cash, cash equivalents and short-term investments	0	0	0	0	0
7. Derivative instruments	0	0	0	0	0
8. Other invested assets	0	0	0	0	0
9. Aggregate write-ins for capital gains (losses)	0	0	0	0	0
10. Total capital gains (losses)	0	0	0	0	0
DETAILS OF WRITE-INS					
0901.
0902.
0903.
0998. Summary of remaining write-ins for Line 9 from overflow page	0	0	0	0	0
0999. Totals (Lines 0901 thru 0903 plus 0998) (Line 9, above)	0	0	0	0	0

ANNUAL STATEMENT FOR THE YEAR 2023 OF THE Pawtucket Insurance Company

EXHIBIT OF NON-ADMITTED ASSETS

	1	2	3
	Current Year Total Nonadmitted Assets	Prior Year Total Nonadmitted Assets	Change in Total Nonadmitted Assets (Col. 2 - Col. 1)
1. Bonds (Schedule D)			0
2. Stocks (Schedule D):			
2.1 Preferred stocks			0
2.2 Common stocks			0
3. Mortgage loans on real estate (Schedule B):			
3.1 First liens			0
3.2 Other than first liens.....			0
4. Real estate (Schedule A):			
4.1 Properties occupied by the company			0
4.2 Properties held for the production of income.....			0
4.3 Properties held for sale			0
5. Cash (Schedule E - Part 1), cash equivalents (Schedule E - Part 2) and short-term investments (Schedule DA)			0
6. Contract loans			0
7. Derivatives (Schedule DB)			0
8. Other invested assets (Schedule BA)			0
9. Receivables for securities			0
10. Securities lending reinvested collateral assets (Schedule DL)			0
11. Aggregate write-ins for invested assets	0	0	0
12. Subtotals, cash and invested assets (Lines 1 to 11)	0	0	0
13. Title plants (for Title insurers only)			0
14. Investment income due and accrued			0
15. Premiums and considerations:			
15.1 Uncollected premiums and agents' balances in the course of collection			0
15.2 Deferred premiums, agents' balances and installments booked but deferred and not yet due ..			0
15.3 Accrued retrospective premiums and contracts subject to redetermination			0
16. Reinsurance:			
16.1 Amounts recoverable from reinsurers			0
16.2 Funds held by or deposited with reinsured companies			0
16.3 Other amounts receivable under reinsurance contracts			0
17. Amounts receivable relating to uninsured plans			0
18.1 Current federal and foreign income tax recoverable and interest thereon			0
18.2 Net deferred tax asset			0
19. Guaranty funds receivable or on deposit			0
20. Electronic data processing equipment and software			0
21. Furniture and equipment, including health care delivery assets			0
22. Net adjustment in assets and liabilities due to foreign exchange rates			0
23. Receivables from parent, subsidiaries and affiliates			0
24. Health care and other amounts receivable			0
25. Aggregate write-ins for other than invested assets	0	0	0
26. Total assets excluding Separate Accounts, Segregated Accounts and Protected Cell Accounts (Lines 12 to 25)	0	0	0
27. From Separate Accounts, Segregated Accounts and Protected Cell Accounts			0
28. Total (Lines 26 and 27)	0	0	0
DETAILS OF WRITE-INS			
1101. Prepaid Expenses		0	0
1102.		0	0
1103.		0	0
1198. Summary of remaining write-ins for Line 11 from overflow page	0	0	0
1199. Totals (Lines 1101 thru 1103 plus 1198)(Line 11 above)	0	0	0
2501.		0	0
2502.		0	0
2503.			
2598. Summary of remaining write-ins for Line 25 from overflow page	0	0	0
2599. Totals (Lines 2501 thru 2503 plus 2598)(Line 25 above)	0	0	0

1. Summary of Significant Accounting Practices

A. Accounting Practices

The accompanying financial statements of Pawtucket Insurance Company (the “Company” or “PIC”) are presented on the basis of accounting practices prescribed or permitted by the Rhode Island Insurance Department.

The Rhode Island Insurance Department recognizes only statutory accounting practices prescribed or permitted by the State of Rhode Island for determining and reporting the financial condition and results of operations of an insurance company, and for determining its solvency under the Rhode Island Insurance Law. The National Association of Insurance Commissioners’ (“NAIC”) *Accounting Practices and Procedures Manual* (“NAIC SAP”) has been adopted as a component of prescribed or permitted practices by the State of Rhode Island.

A reconciliation of the Company’s surplus between the practice permitted by the Rhode Island Department and the NAIC SAP is shown below:

	SSAP #	F/S Page	F/S Line #	2023	2022
<u>NET INCOME (LOSS)</u>					
(1) Pawtucket Insurance Company state basis (Page 4, Line 20, Columns 1 & 2)	00	4	20	\$ 134,050	\$ 7,228
(2) State Prescribed Practices that are an increase/(decrease) from NAIC SAP:				-	-
(3) State Prescribed Practices that are an increase/(decrease) from NAIC SAP: Depreciation of buildings and land	00	-	-	\$ -	\$ -
(4) NAIC SAP (1-2-3=4)				<u>\$ 134,050</u>	<u>\$ 7,228</u>
<u>SURPLUS</u>					
(5) Pawtucket Insurance Company state basis (Page 3, Line 37, Columns 1 & 2)	00	3	37	\$ 4,229,358	\$ 4,095,208
(6) State Prescribed Practices that are an increase/(decrease) from NAIC SAP:				-	-
(7) State Prescribed Practices that are an increase/(decrease) from NAIC SAP: Building and land	00	-	-	\$ -	\$ -
(8) NAIC SAP (5-6-7=8)				<u>\$ 4,229,358</u>	<u>\$ 4,095,208</u>

B. Use of Estimates in the Preparation of the Financial Statements

The preparation of financial statements in conformity with Statutory Accounting Principles (“SAP”) requires management to make estimates and assumptions that affect the reported amounts of assets and liabilities. It also requires disclosure of contingent assets and liabilities at the date of the financial statements and the reported amounts of revenue and expenses during the period. Actual results could differ from those estimates.

C. Accounting Policy

Premiums are earned over the terms of the related insurance policies and reinsurance contracts. Unearned premium reserves are established to cover the unexpired portion of premiums written. Such reserves are computed by pro rata methods for direct business and are based on reports from ceding companies for reinsurance assumed and contract terms for reinsurance ceded. However, there were no written nor earned premiums in 2023 or 2022.

Expenses incurred in connection with acquiring new insurance business, including such acquisitions costs as sales commissions, are charged to operations as incurred. Expenses incurred are reduced for ceding allowances received or receivable. No new insurance business was acquired in 2023 or 2022.

In addition, the company uses the following accounting policies:

- (1) Short-term investments are stated at amortized cost.
- (2) Bonds not backed by other loans are stated at amortized cost using the scientific interest method.
- (3) Unaffiliated common stocks are stated at market value.
- (4) Preferred Stocks, depending on type, are stated at cost or market.
- (5) Mortgage loans on real estate.
N/A
- (6) Loan-backed securities are stated at amortized cost. The retrospective amortization adjustment method is used to value all loan-backed securities.
- (7) Investments in uncombined subsidiaries, controlled and affiliated companies.
N/A

- (8) Investments in joint ventures, partnerships and limited liability companies.
N/A
- (9) Derivatives.
N/A
- (10) N/A
- (11) Unpaid losses and loss adjustment expenses include an amount determined from individual case estimates and loss reports and an amount, based on past experience, for losses incurred but not reported. Such liabilities are necessarily based on assumptions and estimates and, while management believes the amount is adequate, the ultimate liability may be in excess of or less than the amount provided. The methods for making such estimates, and for establishing the resulting liability, are continually reviewed and any adjustments are reflected in the period determined.
- (12) The Company has not modified its capitalization policy from the prior period.
- (13) Method used to estimate pharmaceutical rebate receivables.
N/A

D. Going Concern
N/A

2. Accounting Changes and Corrections of Errors
N/A

3. Business Combinations and Goodwill

A. Statutory Purchase Method
N/A

B. Statutory Merger
N/A

C. Impairment Loss
N/A

4. Discontinued Operations
N/A

5. Investments

A. Mortgage Loans, including Mezzanine Real Estate Loans
N/A

B. Debt Restructuring
N/A

C. Reverse Mortgages
N/A

D. Loan-Backed Securities
N/A

E. Dollar Repurchase Agreements and/or Securities Lending Transactions
N/A

F. Repurchase Agreements Transactions Accounted for as Secured Borrowings
N/A

G. Reverse Repurchase Agreements Transactions Accounted for as Secured Borrowings
N/A

H. Repurchase Agreements Transactions Accounted for as a Sale
N/A

I. Reverse Repurchase Agreements Transactions Accounted for as a Sale
N/A

J. Real Estate
N/A

K. Low Income Housing Tax Credits (LIHTC)
N/A

L. Restricted Assets

In accordance with revisions to SSAP No. 1, effective in 2013, the following tables disclose quantitative information about the Company's restricted assets by category of restricted asset for the year ended December 31, 2023.

(1) Restricted assets (including pledged) summarized by restricted asset category

Restricted Asset Category	Gross (Admitted & Nonadmitted) Restricted							Current Year			
	Current Year					6 Total From Prior Year	7 Increase/ (Decrease) (5 minus 6)	8 Total Nonadmitted Restricted	9 Total Admitted Restricted (5 minus 8)	Percentage	
	1 Total General Account (G/A)	2 G/A Supporting Protected Cell Account Activity (a)	3 Total Protected Cell Account Restricted Assets	4 Protected Cell Account Assets Supporting G/A Activity (b)	5 Total (1 plus 3)					10 Gross (Admitted & Nonadmitted) Restricted to Total Assets (c)	11 Admitted Restricted to Total Admitted Assets (d)
a. Subject to contractual obligation for which liability is not shown	\$	\$	\$	\$	\$	\$	\$	\$	\$	%	%
b. Collateral held under security lending agreements											
c. Subject to repurchase agreements											
d. Subject to reverse repurchase agreements											
e. Subject to dollar repurchase agreements											
f. Subject to dollar reverse repurchase agreements											
g. Placed under option contracts											
h. Letter stock or securities restricted as to sale - excluding FHLB capital stock											
i. FHLB capital stock											
j. On deposit with states	378,761				378,761	378,761			378,761	9.24	9.24
k. On deposit with other regulatory bodies											
l. Pledged collateral to FHLB (including assets backing funding agreements)											
m. Pledged as collateral not captured in other categories											
n. Other restricted assets											
o. Total Restricted Assets	\$ 378,761.00	\$	\$	\$	\$ 378,761.00	\$ 378,761.00	\$	\$	\$ 378,761.00	9.2%	9.2%

Restricted Asset Category	Current Year			
	8 Total Nonadmitted Restricted	9 Total Admitted Restricted (5 minus 8)	Percentage	
			10 Gross (Admitted & Nonadmitted) Restricted to Total Assets (c)	11 Admitted Restricted to Total Admitted Assets (d)
a. Subject to contractual obligation for which liability is not shown		0	0.000	0.000
b. Collateral held under security lending agreements		0	0.000	0.000
c. Subject to repurchase agreements		0	0.000	0.000
d. Subject to reverse repurchase agreements		0	0.000	0.000
e. Subject to dollar repurchase agreements		0	0.000	0.000
f. Subject to dollar reverse repurchase agreements		0	0.000	0.000
g. Placed under option contracts		0	0.000	0.000
h. Letter stock or securities restricted as to sale - excluding FHLB capital stock		0	0.000	0.000
i. FHLB capital stock		0	0.000	0.000
j. On deposit with states		378,761	8.868	8.868
k. On deposit with other regulatory bodies		0	0.000	0.000
l. Pledged collateral to FHLB (including assets backing funding agreements)		0	0.000	0.000
m. Pledged as collateral not captured in other categories		0	0.000	0.000
n. Other restricted assets		0	0.000	0.000
o. Total Restricted Assets (Sum of a through n)	0	378,761	8.868	8.868

(c) Column 5 divided by Asset Page, Column 1, Line 28

(d) Column 9 divided by Asset Page, Column 3, Line 28

(2) Detail of assets pledged as collateral not captured in other categories
N/A

(3) Detail of other restricted Assets
N/A

(4) Collateral Received and Reflected as Assets Within the Financial Statements
N/A

M. Working Capital Finance Investments

(1) Aggregate Working Capital Finance Investments (WCFI) Book/Adjusted Carrying Value by NAIC Designation
N/A

(2) Aggregate Maturity Distribution on the Underlying Working Capital Finance Programs
N/A

(3) Events of default of working capital finance investments
N/A

N. Offsetting and Netting of Assets and Liabilities
N/A

O. 5GI Securities
N/A

P. Short Sales
N/A

Q. Prepayment Penalty and Acceleration Fees
N/A

R. Reporting Entity's Share of Cash Pool by Asset
N/A

6. Joint Ventures, Partnerships and Limited Liability Companies

A. Detail for Those Greater than 10% of Admitted Assets
N/A

B. Write-downs for Impairments
N/A

7. Investment Income

A. Due and accrued income was excluded from surplus on the following bases:

The Company non-admits investment income due and accrued if amounts are over 90 days past due

B. Amounts Non-Admitted

No investment income due and accrued was excluded from surplus as of December 31, 2023.

8. Derivative Instruments
N/A

9. Income Taxes

A. The components of the net deferred tax asset/(liability) at December 31 are as follows:

	12/31/2023			12/31/2022			Change		
	Ordinary	Capital	Total	Ordinary	Capital	Total	Ordinary	Capital	Total
(a) Gross deferred tax assets	-	-	-	-	-	-	-	-	-
(b) Statutory valuation allowance adjustments	-	-	-	-	-	-	-	-	-
(c) Adjusted gross deferred tax assets (1a - 1b)	-	-	-	-	-	-	-	-	-
(d) Deferred Tax Assets Nonadmitted	-	-	-	-	-	-	-	-	-
(e) Subtotal Net Admitted Deferred Tax Asset (1c - 1d)	-	-	-	-	-	-	-	-	-
(f) Deferred Tax Liabilities	198	-	198	298	-	298	(100)	-	(100)
(g) Net admitted deferred tax asset/(Net Deferred Tax Liability) (1e - 1f)	(198)	-	(198)	(298)	-	(298)	100	-	100

	12/31/2023			12/31/2022			Change		
	Ordinary	Capital	Total	Ordinary	Capital	Total	Ordinary	Capital	Total
SSAP 101, paragraphs 11.a., 11.b., and 11.c.:									
(a) Federal Income Taxes Paid in Prior Years Recoverable Through Loss Carrybacks	-	-	-	-	-	-	-	-	-
(b) Adjusted Gross Deferred Tax Assets Expected to be Realized (Excluding The Amount of Deferred Tax Assets From 2(a) above) After Application of the Threshold Limitation. (The Lesser of 2(b)1 and 2(b)2 Below)	-	-	-	-	-	-	-	-	-
1. Adjusted Gross Deferred Tax Assets Expected to be Realized Following the Balance Sheet Date	-	-	-	-	-	-	-	-	-
2. Adjusted Gross Deferred Tax Assets Allowed per Limitation Threshold	-	-	634,413	-	-	614,401	-	-	20,012
(c) Adjusted Gross Deferred Tax Assets (Excluding the Amount of Deferred Tax Assets From 2(a) and 2(b) above) Offset by Gross Deferred Tax Liabilities	-	-	-	-	-	-	-	-	-
(d) Deferred Tax Assets Admitted as the Result of Application of SSAP No. 101 Total (2(a) + 2(b) + 2(c))	-	-	-	-	-	-	-	-	-

		2023	2022
		Percentage	Percentage
(a)	Ratio Percentage Used to Determine Recovery Period and Threshold Limitation Amount	49466%	49495%
(b)	Amount of Adjusted Capital and Surplus Used to Determine Recovery Period & Threshold Limitation in 2(b)2 Above	4,229,358	4,095,208

4.

	December 31, 2023			December 31, 2022			Change		
	Ordinary	Capital	Total %	Ordinary	Capital	Total %	Ordinary	Capital	Total
Impact of Tax Planning Strategies									
(a) Determination of Adjusted Gross Deferred Tax Assets, By Tax Character as a Percentage	0.0%	0.0%	0.0%	0.0%	0.0%	0.0%	0%	0%	0%
1. Adjusted Gross DTAs Amounts from Note 9A1(c)	-	-	-	-	-	-	-	-	-
2. Percentage of Adjusted Gross DTAs By Tax Character Attributable to the Impact of Tax Planning Strategies	0.0%	0.0%	0.0%	0.0%	0.0%	0.0%	0%	0%	0%
3. Net Admitted Adjusted Gross DTAs Amount from Note 9A1(e)	-	-	-	-	-	-	-	-	-
4. Percentage of Net Admitted Adjusted Gross DTAs by Tax Character Admitted because of the Impact of Tax Planning Strategies	0.0%	0.0%	0.0%	0.0%	0.0%	0.0%	0%	0%	0%
(b) Does the Company's tax-planning strategies include the use of reinsurance? Yes _____ No <input checked="" type="checkbox"/>									

B. Unrecognized DTLs
N/A

C. Current Tax and Change in Deferred Tax

1. Current income tax:

1. Current income tax:	2023	2022	Change
(a) Federal	35,545	2,157	33,388
(b) Foreign			
(c) Subtotal	35,545	2,157	33,388
(d) Federal income tax on net capital gains	-	-	-
(e) Change in net deferred income taxes	-	-	-
(f) Prior year taxes	(84)	0	(84)
Federal and foreign income taxes incurred	35,461	2,157	33,304

2. Deferred tax assets:

2. Deferred tax assets:	2023	2022	Change
(a) Ordinary:			
(1) Non-admitted asset	-	-	-
(2) Bond market discount adjustments, net	-	-	-
(3) Unearned Premiums	-	-	-
(4) Loss Discounting	-	-	-
(5) Accrued Expenses	-	-	-
(6) Fixed Assets	-	-	-
(7) Organizational Costs	-	-	-
(8) Charitable Contributions	-	-	-
(9) NOL Carryforward	-	-	-
(10) Tax Credits	-	-	-
(11) Deferred Policy fees	-	-	-
(12) Professional Fees	-	-	-
(13) Acquisition costs	-	-	-
(14) Other (including items <5% of total ordinary tax assets)	-	-	-
(15) Other assets - nonadmitted	-	-	-
(99) Subtotal	-	-	-
(b) Statutory valuation allowance adjustment	-	-	-
(c) Nonadmitted	-	-	-
(d) Admitted ordinary deferred tax assets (2a99-2b-2c)	-	-	-
(e) Capital			
(1) Investments	-	-	-
(2) Capital Loss Carryforward	-	-	-
(3) OTTI	-	-	-
(4) Passthrough Entities	-	-	-
(5) Unrealized Losses	-	-	-
(6) Other (including items <5% of total capital tax assets)	-	-	-
(99) Subtotal	-	-	-
(f) Statutory valuation allowance adjustment	-	-	-
(g) Nonadmitted	-	-	-
(h) Admitted capital deferred tax assets (2e99-2f-2g)	-	-	-
(i) Admitted deferred tax assets (2d+2h)	-	-	-

3. Deferred tax liabilities:

3. Deferred tax liabilities:	2023	2022	Change
(a) Ordinary:			
(1) Bond market discount adjustments, net	-	-	-
(2) Deferred Gain on Building	-	-	-
(3) Pension Intangible	-	-	-
(4) Deferred Revenue	-	-	-
(5) Fixed Assets	-	-	-
(6) Other - MLPs	-	-	-
(7) Reserve Transition Liability	198	298	(100)
(8)	-	-	-
(99) Subtotal	198	298	(100)
(b) Capital			
(1) Unrealized Gains	-	-	-
(2)	-	-	-
(3) Other (including items <5% of total capital tax liabilities)	-	-	-
(99) Subtotal	-	-	-
(c) Deferred tax liabilities (3a99+3b99)	198	298	(100)

4. Net deferred tax assets/liabilities (2i-3c) (198) (298) 100

D. Reconciliation of Federal Income Tax Rate to Actual Effective Rate

The significant items causing a difference between the statutory federal income tax rate and the company's effective income tax rate are as follows:

	12/31/2023	Effective Tax Rate
Provision computed at statutory rate	\$35,443	21.0%
Permanent Differences	3	0.0%
Tax-exempt interest, net of pro-ration	0	0.0%
Dividend-received-deduction, net of pro-ration	0	0.0%
Change in N/A Assets	0	0.0%
Change in unrealized gain(losses)	0	0.0%
Tax Rate change due to Carryback	0	0.0%
PY Federal Tax Adjustment	(84)	0.0%
SSAP	0	0.0%
Other	0	0.0%
Totals	\$35,362	21.0%
Federal and foreign income taxes incurred	35,461	21.0%
Realized capital gains (losses) tax	0	0.0%
Change in net deferred income taxes	(99)	-0.1%
	35,362	20.90%

E. Operating Loss and Tax Credit Carryforwards

- At December 31, 2023, the Company did not have any unused operating loss carryforwards available to offset against future taxable income. At December 31, 2023, the company did not have any unused capital loss carryforwards available to offset against future taxable income.
- The following is income tax expense for 2022 and 2023 that is available for recoupment in the event of future net losses:

Year	Amount
2023	\$35,545
2022	\$2,157

- The Company did not have any protective tax deposits under Section 6603 of the Internal Revenue Code.

F. Consolidated Federal Income Tax Return

(1) The Company's federal income tax return is consolidated with the following entities:

Heritage Insurance Holdings, Inc.
Heritage Property & Casualty Insurance Company
Heritage MGA, LLC
Contractors' Alliance Network, LLC
Osprey Re Ltd.
Skye Lane Properties, LLC
Zephyr Insurance Company
Zephyr Acquisition Company
HI Holdings, Inc.
NBIC Holdings, Inc.
Narragansett Bay Insurance Company
NBIC Service Company, Inc.
NBIC Financial Holdings, Inc.

(2) The method of allocation between the companies is subject to written agreement, approved by the Board of Directors, whereby allocation is made primarily on a separate return basis with current credit for any net operating losses or other items utilized in the consolidated tax return. Intercompany tax balances are settled when the return is filed.

G. Federal or Foreign Federal Income Tax Loss Contingencies

The Company has no tax loss contingencies for which it is reasonably possible that the total liability will significantly increase within twelve months of the reporting date.

H. Repatriation Transition Tax (RTT)

N/A

I. Alternative Minimum Tax credit

N/A

10. Information Concerning Parent, Subsidiaries, Affiliates and Other Related Parties

A. – C. The parent company of PIC, Narragansett Bay Insurance Company ("NBIC") has been capitalized through a \$200 million funding agreement between NBIC Holdings, Inc., (formerly Blackstone Financial Group Holdings, Inc.) and an outside investment group.

Prior to December 7, 2005, the Company was a 100% owned subsidiary of NBIC (NAIC #43001). On December 7, 2005, the Company was purchased by NBIC Holdings, Inc and the ownership of the NBIC was distributed to NBIC Financial Holdings, Inc., resulting in the NBIC becoming a sister corporation of the Company.

As of March 31, 2006, NBIC Financial Holdings, Inc contributed all of the Company's issued and outstanding capital stock to NBIC, which, as noted above, is a 100% owned subsidiary of NBIC Financial Holdings, Inc. The statutory surplus of the Company at March 31, 2006 was \$3,007,995.

On December 7, 2005, upon the purchase by NBIC Holdings, Inc., the Company was removed from rehabilitation status. In conjunction with this purchase, all assets and liabilities of NBIC, other than its insurance licenses, were transferred, by order of the Rhode Island Superior Court, to PIC, leaving the NBIC free of both assets and liabilities, but retaining its insurance licenses.

On December 28, 2011 and December 28, 2012, the Company issued surplus notes to its affiliate NBIC Service Company, Inc("Service") in the amount of \$650,000 and \$500,000, respectively. As described in note 13 (11) the company paid its surplus notes totaling \$1,150,000 on December 29, 2017.

On November 12, 2016, the Company received a capital contribution from NBIC in the form of cash in the amount of \$1,500,000. The proceeds of this capital contribution are intended to be used to fund the Company's pension plan.

On November 30, 2018 PIC, its parent company and all affiliates were purchased by Heritage Insurance Holdings, Inc.

On December 29, 2018, Pawtucket Insurance Company transferred its buildings to its affiliate, NBIC Service Company for the statutory book adjusted carrying value of \$1.7 million. The associated practice permitted by the State of Rhode Island Insurance Department is no longer in place.

D. As of December 31, 2023, the Company did not owe its affiliate, NBIC Service Company, Inc. for any outstanding balances.

E. Management, Service Contracts, Cost Sharing Arrangements

F. Guarantees or Contingencies for Related Parties

N/A

The Company has an Administrative Services arrangement with Service and NBIC. The Company reimburses these affiliated entities for costs directly related to the business of the Company. The allocation policies were designed to be fair and equitable to all parties.

G. See Note 10 A., B., & C and 10 I

H. Value of an Upstream Intermediate Entity

N/A

I. Investment in an SCA that exceeds 10% of admitted assets

In accordance with NAIC SAP, NBIC has reported the investment in its 100% owned insurance subsidiary, PIC (See 10A & 10B), at the statutory surplus value of that subsidiary. However, effective September 30, 2006, PIC, with the explicit permission of the Rhode Island Insurance Department, records its buildings and land at fair market value instead of at depreciated cost required by NAIC SAP. This permitted practice, however, does not extend to the value of PIC as recorded by NBIC, therefore, continues to record its investment in PIC as an amount equal to PIC's surplus on an NAIC SAP basis.

J. Write down for impairment of Investments in SCA Entities
N/A

K. Investment in Foreign Insurance Subsidiary
N/A

L. Investment in Downstream Non-Insurance Holding Company
N/A

M. SCA Investments
N/A

N. Investment in an Insurance SCA
N/A

O. SCA and SSAP No. 48 Entity Loss Tracking
The Company has no share of losses in an SCA or SSAP No.48 entity.

11. Debt
N/A

12. Retirement Plans, Deferred Compensation, Postemployment Benefits and Compensated Absences and Other Post Retirement Benefit Plans

A. Defined Benefit Plans

The Company has a qualified defined benefit retirement plan covering substantially all of its former employees. The benefits are based on years of service, age at retirement and employee's compensation during the last five years of employment. The Company also has a non-qualified executive retirement plan covering certain former senior officers. The plan provides minimum retirement benefits based on years of service, age at retirement and compensation during the last two years of employment.

Effective July 27, 2003, benefits accumulated under the qualified plan were frozen and no further benefits are accumulating for employees.

Effective September 22, 2005, the benefits due to certain participants in the executive retirement plan were re-defined by the Rhode Island Superior Court Of the remaining participants, benefits for both have been accrued on either a lump sum basis or agreed upon basis. Additionally, during 2003, a plan providing certain healthcare benefits to retirees was terminated for both current and future retirees.

As of March 31, 2018, the Company funded and terminated the Plan, providing to its beneficiaries lump-sum distributions or annuitizing participant benefits, and thus fulfilling the Company's pension obligation.

(9) N/A

(10) N/A

(11) N/A

(12) The Company's defined benefit plan was terminated March 31, 2018. Prior to termination, the projected benefit obligation was the actuarial present value of all benefits attributed to employee service as of the date of calculation. The expected long-term rate of return on assets was developed based on a model which utilizes modern portfolio theory to produce a statistical range of expected returns. The model was based on the historical behavior of the broad financial markets, reflects the plan's asset allocation and utilizes the plan's actuarial assumption regarding future rates of inflation.

There are neither assets nor estimated future payments due the plan termination as of March 31, 2018.

(13) N/A

(14) N/A

(15) N/A

(16) N/A

(17) N/A

(18) N/A

(19) N/A

(20) N/A

B. N/A

C. Fair Value Measurements

(1) N/A

(2) N/A

D - I N/A

13. Capital and Surplus, Dividend Restrictions and Quasi-Reorganizations

(1) The Company has 1,000,000 shares of \$1 par value common stock authorized, issued and outstanding at December 31, 2023 and 2022.

(2) The Company has no preferred stock outstanding at December 31, 2023 and 2022.

(3) The Company may pay dividends without prior approval of the Rhode Island (state of domicile) Department of Business Regulation (“DBR”) except as required under Rhode Island law Prior notification to the DBR prior to paying dividends, however, is required.

(4) The Company made no dividend payments during the years ended December 31, 2023 and 2022.

(5) Within the limits described above (see Note 13(3)), there are no restrictions placed on the portion of profits that may be paid as ordinary dividends.

(6) Restrictions on Unassigned Funds (Surplus)
N/A

(7) Mutual Surplus Advances
N/A

(8) Stock Held for Special Purposes
N/A

(9) Changes in Special Surplus Funds
N/A

(10) Changes in Unassigned Funds

The Company’s unassigned funds/surplus has been increased by \$134,121 at December 31, 2023.

(11) Surplus Notes
N/A

(12) Quasi Reorganizations
N/A

(13) Effective Date of Quasi Reorganizations
N/A

14. Liabilities, Contingencies and Assessments

A. Contingent Commitments
None

B. Assessments
None

C. Gain Contingencies
None

D. Claims Related Extra Contractual Obligation and Bad Faith Losses Stemming from Lawsuits
N/A

E. Product Warranties
N/A

F. Joint and Several Liabilities
N/A

G. All Other Contingencies

Lawsuits against the Company related to claims settlement activities arise in the course of business. The estimated settlement of all claims is included in unpaid losses and loss adjusting expense.

15. Leases

A. Lessee Operating Lease

The Company incurs no significant lease expense.

B. Lessor Leases

The Company has no leasing agreements as a lessor.

16. Information about Financial Instruments with Off-Balance Sheet Risk and Financial Instruments with Concentrations of Credit Risk

N/A

17. Sale, Transfer and Servicing of Financial Assets and Extinguishment of Liabilities

A. Transfers of Receivables Reported as Sales

N/A

B. Transfers and Servicing of Financial Assets

N/A

C. Wash Sales

The Company had no wash sales during the years ended December 31, 2023 and 2022.

18. Gain or Loss to the Reporting Entity from Uninsured A & H Plans and the Uninsured portion of Partially Insured plans

A. ASO Plans

N/A

B. ASC Plans

N/A

C. Medicare or Similarly Structured Cost Based Reimbursement Contract

N/A

19. Direct Premium Written/Produced by Managing General Agents/Third Party Administrators

N/A

20. Fair Value Measurements

A. Asset and Liabilities Measured and Reported at Fair Value

N/A

B. Other Fair Value Disclosures

N/A

C. Fair Values for All Financial Instruments

Types of Financial Instrument	Aggregate Fair Value	Admitted Assets	(Level 1)	(Level 2)	(Level 3)	Not Practical (Carrying Value)
Financial instruments – assets:						
Bonds	\$ -	\$ -	\$ -	\$ -	\$ -	\$ -
Cash, cash equivalents and short-term investments	4,270,873	4,270,873	4,270,873	-	-	-
Total assets	\$ 4,270,873	\$ 4,270,873	\$ 4,270,873	\$ -	\$ -	\$ -

D. N/A

E. N/A

21. Other Items

A. Unusual or Infrequent Items

N/A

B. Troubled Debt Restructuring: Debtors

N/A

C. Other Disclosures

The Company is required to maintain security deposits with various state insurance departments. The security deposits had a carrying value of \$378,761 for the years ended December 31, 2023 and 2022, respectively.

D. Business Interruption Insurance Recoveries

N/A

- E. State Transferable and Non-Transferable Tax Credits
N/A
- F. Subprime-Mortgage-Related Risk Exposure
The Company had no subprime mortgage risk exposure during the years ended December 31, 2023 and 2022.
- G. Insurance-Linked Securities (ILS) Contracts
N/A
- H. Amount realized on Life Insurance where reporting entity is owner and beneficiary
N/A
- 22. Events Subsequent
N/A
- 23. Reinsurance
 - A. Unsecured Reinsurance Recoverables
N/A
 - B. Reinsurance Recoverable in Dispute
N/A
 - C. Reinsurance Assumed and Ceded:
N/A - Every reinsurance contract expired or was terminated prior to December 31, 2004. Consequently, any related commissions have been recorded.
 - D. Uncollectible Reinsurance
N/A
 - E. Commutation of Ceded Reinsurance
N/A
 - F. Retroactive Reinsurance
N/A
 - G. Reinsurance Accounted for as a Deposit
N/A
 - H. Disclosures for the Transfer of Property and Casualty Run-off Agreements
N/A
 - I. Certified Reinsurer Rating Downgraded or Status Subject to Revocation
N/A
 - J. Reinsurance Agreements Qualifying for Reinsurer Aggregation
N/A
 - K. Reinsurance Credit
N/A
- 24. Retrospectively Rated Contracts & Contracts Subject to Redetermination
N/A
- 25. Changes in Incurred Losses and Loss Adjustment Expenses
The Company's net incurred loss and loss adjustment expenses for the years ended December 31, 2023 and 2022 include favorable loss development on prior accident years of \$0. Original ultimate loss and loss adjustment expense estimates are increased or decreased over time as additional information becomes known regarding individual claims.
- 26. Intercompany Pooling Arrangements
N/A
- 27. Structured Settlements
N/A
- 28. Health Care Receivables
N/A
- 29. Participating Policies
N/A
- 30. Premium Deficiency Reserves
N/A
- 31. High Deductibles
N/A

32. Discounting of Liabilities for Unpaid Losses or Unpaid Loss Adjustment Expenses
N/A

33. Asbestos/Environmental Reserves

A. Asbestos losses

The Company had no remaining asbestos losses open as of December 31, 2023 and 2022.

B. N/A - Bulk and IBNR reserves are separately identified by line but not by type of claim

C. N/A - Bulk and IBNR reserves are separately identified by line but not by type of claim

D. Environmental losses

The Company paid its last environmental loss in February 2019 pertaining to the Homeowners line of business. This claim was a result of oil spills from overfilling residential oil tanks, escapes from corroded underground storage tanks, or spillage of dry-cleaning solvents. No further reserves were on the books for the years ended 2020, and 2019.

E. N/A - Bulk and IBNR reserves are separately identified by line but not by type of claim.

F. N/A - Bulk and IBNR reserves are separately identified by line but not by type of claim.

34. Subscriber Savings Accounts
N/A

35. Multiple Peril Crop Insurance
N/A

36. Financial Guaranty Insurance
N/A

GENERAL INTERROGATORIES

**PART 1 - COMMON INTERROGATORIES
GENERAL**

- 1.1 Is the reporting entity a member of an Insurance Holding Company System consisting of two or more affiliated persons, one or more of which is an insurer? Yes [X] No []
If yes, complete Schedule Y, Parts 1, 1A, 2 and 3.
- 1.2 If yes, did the reporting entity register and file with its domiciliary State Insurance Commissioner, Director or Superintendent or with such regulatory official of the state of domicile of the principal insurer in the Holding Company System, a registration statement providing disclosure substantially similar to the standards adopted by the National Association of Insurance Commissioners (NAIC) in its Model Insurance Holding Company System Regulatory Act and model regulations pertaining thereto, or is the reporting entity subject to standards and disclosure requirements substantially similar to those required by such Act and regulations? Yes [X] No [] N/A []
- 1.3 State Regulating? RHODE ISLAND
- 1.4 Is the reporting entity publicly traded or a member of a publicly traded group? Yes [X] No []
- 1.5 If the response to 1.4 is yes, provide the CIK (Central Index Key) code issued by the SEC for the entity/group. 0001598665
- 2.1 Has any change been made during the year of this statement in the charter, by-laws, articles of incorporation, or deed of settlement of the reporting entity? Yes [] No [X]
- 2.2 If yes, date of change:
- 3.1 State as of what date the latest financial examination of the reporting entity was made or is being made. 12/31/2021
- 3.2 State the as of date that the latest financial examination report became available from either the state of domicile or the reporting entity. This date should be the date of the examined balance sheet and not the date the report was completed or released. 12/31/2021
- 3.3 State as of what date the latest financial examination report became available to other states or the public from either the state of domicile or the reporting entity. This is the release date or completion date of the examination report and not the date of the examination (balance sheet date). 06/14/2023
- 3.4 By what department or departments?
Rhode Island Department of Business Regulation - Insurance Division
- 3.5 Have all financial statement adjustments within the latest financial examination report been accounted for in a subsequent financial statement filed with Departments? Yes [] No [] N/A [X]
- 3.6 Have all of the recommendations within the latest financial examination report been complied with? Yes [X] No [] N/A []
- 4.1 During the period covered by this statement, did any agent, broker, sales representative, non-affiliated sales/service organization or any combination thereof under common control (other than salaried employees of the reporting entity), receive credit or commissions for or control a substantial part (more than 20 percent of any major line of business measured on direct premiums) of:
4.11 sales of new business? Yes [] No [X]
4.12 renewals? Yes [] No [X]
- 4.2 During the period covered by this statement, did any sales/service organization owned in whole or in part by the reporting entity or an affiliate, receive credit or commissions for or control a substantial part (more than 20 percent of any major line of business measured on direct premiums) of:
4.21 sales of new business? Yes [] No [X]
4.22 renewals? Yes [] No [X]
- 5.1 Has the reporting entity been a party to a merger or consolidation during the period covered by this statement? Yes [] No [X]
If yes, complete and file the merger history data file with the NAIC.
- 5.2 If yes, provide the name of the entity, NAIC Company Code, and state of domicile (use two letter state abbreviation) for any entity that has ceased to exist as a result of the merger or consolidation.

1 Name of Entity	2 NAIC Company Code	3 State of Domicile

- 6.1 Has the reporting entity had any Certificates of Authority, licenses or registrations (including corporate registration, if applicable) suspended or revoked by any governmental entity during the reporting period? Yes [] No [X]
- 6.2 If yes, give full information:
- 7.1 Does any foreign (non-United States) person or entity directly or indirectly control 10% or more of the reporting entity? Yes [] No [X]
- 7.2 If yes,
7.21 State the percentage of foreign control; %
7.22 State the nationality(s) of the foreign person(s) or entity(s); or if the entity is a mutual or reciprocal, the nationality of its manager or attorney-in-fact and identify the type of entity(s) (e.g., individual, corporation, government, manager or attorney-in-fact).

1 Nationality	2 Type of Entity

ANNUAL STATEMENT FOR THE YEAR 2023 OF THE Pawtucket Insurance Company

GENERAL INTERROGATORIES

- 8.1 Is the company a subsidiary of a depository institution holding company (DIHC) or a DIHC itself, regulated by the Federal Reserve Board? Yes [] No [X]
- 8.2 If the response to 8.1 is yes, please identify the name of the DIHC.
.....
- 8.3 Is the company affiliated with one or more banks, thrifts or securities firms? Yes [] No [X]
- 8.4 If response to 8.3 is yes, please provide below the names and location (city and state of the main office) of any affiliates regulated by a federal regulatory services agency [i.e. the Federal Reserve Board (FRB), the Office of the Comptroller of the Currency (OCC), the Federal Deposit Insurance Corporation (FDIC) and the Securities Exchange Commission (SEC)] and identify the affiliate's primary federal regulator.

1 Affiliate Name	2 Location (City, State)	3 FRB	4 OCC	5 FDIC	6 SEC

- 8.5 Is the reporting entity a depository institution holding company with significant insurance operations as defined by the Board of Governors of Federal Reserve System or a subsidiary of the depository institution holding company? Yes [] No [X]
- 8.6 If response to 8.5 is no, is the reporting entity a company or subsidiary of a company that has otherwise been made subject to the Federal Reserve Board's capital rule? Yes [] No [X] N/A []
9. What is the name and address of the independent certified public accountant or accounting firm retained to conduct the annual audit?
PLANTE MORAN, 1111 MICHIGAN AVENUE, SUITE 100, EAST LANSING, MI 48823
- 10.1 Has the insurer been granted any exemptions to the prohibited non-audit services provided by the certified independent public accountant requirements as allowed in Section 7H of the Annual Financial Reporting Model Regulation (Model Audit Rule), or substantially similar state law or regulation? Yes [] No [X]
- 10.2 If the response to 10.1 is yes, provide information related to this exemption:
.....
- 10.3 Has the insurer been granted any exemptions related to the other requirements of the Annual Financial Reporting Model Regulation as allowed for in Section 18A of the Model Regulation, or substantially similar state law or regulation? Yes [] No [X]
- 10.4 If the response to 10.3 is yes, provide information related to this exemption:
.....
- 10.5 Has the reporting entity established an Audit Committee in compliance with the domiciliary state insurance laws? Yes [X] No [] N/A []
- 10.6 If the response to 10.5 is no or n/a, please explain.
.....
11. What is the name, address and affiliation (officer/employee of the reporting entity or actuary/consultant associated with an actuarial consulting firm) of the individual providing the statement of actuarial opinion/certification?
NO ACTUARIAL OPINION WILL BE FILED. A WAIVER WAS RECEIVED FROM THE RHODE ISLAND DEPARTMENT OF BUSINESS REGULATION - INSURANCE DIVISION.
- 12.1 Does the reporting entity own any securities of a real estate holding company or otherwise hold real estate indirectly? Yes [] No [X]
- 12.11 Name of real estate holding company ...
- 12.12 Number of parcels involved
- 12.13 Total book/adjusted carrying value \$
- 12.2 If yes, provide explanation
.....
13. **FOR UNITED STATES BRANCHES OF ALIEN REPORTING ENTITIES ONLY:**
- 13.1 What changes have been made during the year in the United States manager or the United States trustees of the reporting entity?
.....
- 13.2 Does this statement contain all business transacted for the reporting entity through its United States Branch on risks wherever located? Yes [X] No []
- 13.3 Have there been any changes made to any of the trust indentures during the year? Yes [] No [X]
- 13.4 If answer to (13.3) is yes, has the domiciliary or entry state approved the changes? Yes [] No [] N/A [X]
- 14.1 Are the senior officers (principal executive officer, principal financial officer, principal accounting officer or controller, or persons performing similar functions) of the reporting entity subject to a code of ethics, which includes the following standards? Yes [X] No []
- a. Honest and ethical conduct, including the ethical handling of actual or apparent conflicts of interest between personal and professional relationships;
- b. Full, fair, accurate, timely and understandable disclosure in the periodic reports required to be filed by the reporting entity;
- c. Compliance with applicable governmental laws, rules and regulations;
- d. The prompt internal reporting of violations to an appropriate person or persons identified in the code; and
- e. Accountability for adherence to the code.
- 14.11 If the response to 14.1 is No, please explain:
.....
- 14.2 Has the code of ethics for senior managers been amended? Yes [] No [X]
- 14.21 If the response to 14.2 is yes, provide information related to amendment(s).
.....
- 14.3 Have any provisions of the code of ethics been waived for any of the specified officers? Yes [] No [X]
- 14.31 If the response to 14.3 is yes, provide the nature of any waiver(s).
.....

ANNUAL STATEMENT FOR THE YEAR 2023 OF THE Pawtucket Insurance Company

GENERAL INTERROGATORIES

- 15.1 Is the reporting entity the beneficiary of a Letter of Credit that is unrelated to reinsurance where the issuing or confirming bank is not on the SVO Bank List? Yes [] No [X]
- 15.2 If the response to 15.1 is yes, indicate the American Bankers Association (ABA) Routing Number and the name of the issuing or confirming bank of the Letter of Credit and describe the circumstances in which the Letter of Credit is triggered.

1 American Bankers Association (ABA) Routing Number	2 Issuing or Confirming Bank Name	3 Circumstances That Can Trigger the Letter of Credit	4 Amount

BOARD OF DIRECTORS

16. Is the purchase or sale of all investments of the reporting entity passed upon either by the board of directors or a subordinate committee thereof? Yes [X] No []
17. Does the reporting entity keep a complete permanent record of the proceedings of its board of directors and all subordinate committees thereof? Yes [X] No []
18. Has the reporting entity an established procedure for disclosure to its board of directors or trustees of any material interest or affiliation on the part of any of its officers, directors, trustees or responsible employees that is in conflict or is likely to conflict with the official duties of such person? Yes [X] No []

FINANCIAL

19. Has this statement been prepared using a basis of accounting other than Statutory Accounting Principles (e.g., Generally Accepted Accounting Principles)? Yes [] No [X]
- 20.1 Total amount loaned during the year (inclusive of Separate Accounts, exclusive of policy loans):
- 20.11 To directors or other officers.....\$
 - 20.12 To stockholders not officers.....\$
 - 20.13 Trustees, supreme or grand (Fraternal Only) \$
- 20.2 Total amount of loans outstanding at the end of year (inclusive of Separate Accounts, exclusive of policy loans):
- 20.21 To directors or other officers.....\$
 - 20.22 To stockholders not officers.....\$
 - 20.23 Trustees, supreme or grand (Fraternal Only) \$
- 21.1 Were any assets reported in this statement subject to a contractual obligation to transfer to another party without the liability for such obligation being reported in the statement? Yes [] No [X]
- 21.2 If yes, state the amount thereof at December 31 of the current year:
- 21.21 Rented from others.....\$
 - 21.22 Borrowed from others.....\$
 - 21.23 Leased from others\$
 - 21.24 Other\$
- 22.1 Does this statement include payments for assessments as described in the Annual Statement Instructions other than guaranty fund or guaranty association assessments? Yes [] No [X]
- 22.2 If answer is yes:
- 22.21 Amount paid as losses or risk adjustment \$
 - 22.22 Amount paid as expenses\$
 - 22.23 Other amounts paid\$
- 23.1 Does the reporting entity report any amounts due from parent, subsidiaries or affiliates on Page 2 of this statement? Yes [] No [X]
- 23.2 If yes, indicate any amounts receivable from parent included in the Page 2 amount: \$
- 24.1 Does the insurer utilize third parties to pay agent commissions in which the amounts advanced by the third parties are not settled in full within 90 days? Yes [] No [X]
- 24.2 If the response to 24.1 is yes, identify the third-party that pays the agents and whether they are a related party.

Name of Third-Party	Is the Third-Party Agent a Related Party (Yes/No)

INVESTMENT

- 25.01 Were all the stocks, bonds and other securities owned December 31 of current year, over which the reporting entity has exclusive control, in the actual possession of the reporting entity on said date? (other than securities lending programs addressed in 25.03)..... Yes [X] No []

ANNUAL STATEMENT FOR THE YEAR 2023 OF THE Pawtucket Insurance Company

GENERAL INTERROGATORIES

- 25.02 If no, give full and complete information, relating thereto
.....
- 25.03 For securities lending programs, provide a description of the program including value for collateral and amount of loaned securities, and whether collateral is carried on or off-balance sheet. (an alternative is to reference Note 17 where this information is also provided)
.....
- 25.04 For the reporting entity's securities lending program, report amount of collateral for conforming programs as outlined in the Risk-Based Capital Instructions. \$
- 25.05 For the reporting entity's securities lending program, report amount of collateral for other programs. \$
- 25.06 Does your securities lending program require 102% (domestic securities) and 105% (foreign securities) from the counterparty at the outset of the contract? Yes [] No [] N/A [X]
- 25.07 Does the reporting entity non-admit when the collateral received from the counterparty falls below 100%? Yes [] No [] N/A [X]
- 25.08 Does the reporting entity or the reporting entity's securities lending agent utilize the Master Securities lending Agreement (MSLA) to conduct securities lending? Yes [] No [] N/A [X]
- 25.09 For the reporting entity's securities lending program state the amount of the following as of December 31 of the current year:
- 25.091 Total fair value of reinvested collateral assets reported on Schedule DL, Parts 1 and 2. \$ 0
- 25.092 Total book/adjusted carrying value of reinvested collateral assets reported on Schedule DL, Parts 1 and 2 \$ 0
- 25.093 Total payable for securities lending reported on the liability page. \$ 0

- 26.1 Were any of the stocks, bonds or other assets of the reporting entity owned at December 31 of the current year not exclusively under the control of the reporting entity or has the reporting entity sold or transferred any assets subject to a put option contract that is currently in force? (Exclude securities subject to Interrogatory 21.1 and 25.03). Yes [X] No []
- 26.2 If yes, state the amount thereof at December 31 of the current year:
- 26.21 Subject to repurchase agreements \$ 0
- 26.22 Subject to reverse repurchase agreements \$ 0
- 26.23 Subject to dollar repurchase agreements \$ 0
- 26.24 Subject to reverse dollar repurchase agreements \$ 0
- 26.25 Placed under option agreements \$ 0
- 26.26 Letter stock or securities restricted as to sale -
excluding FHLB Capital Stock \$ 0
- 26.27 FHLB Capital Stock \$ 0
- 26.28 On deposit with states \$ 378,761
- 26.29 On deposit with other regulatory bodies \$ 0
- 26.30 Pledged as collateral - excluding collateral pledged to an FHLB \$ 0
- 26.31 Pledged as collateral to FHLB - including assets backing funding agreements \$ 0
- 26.32 Other \$ 0

26.3 For category (26.26) provide the following:

1 Nature of Restriction	2 Description	3 Amount

- 27.1 Does the reporting entity have any hedging transactions reported on Schedule DB? Yes [] No [X]
- 27.2 If yes, has a comprehensive description of the hedging program been made available to the domiciliary state? Yes [] No [] N/A [X]
If no, attach a description with this statement.

LINES 27.3 through 27.5: FOR LIFE/FRATERNAL REPORTING ENTITIES ONLY:

- 27.3 Does the reporting entity utilize derivatives to hedge variable annuity guarantees subject to fluctuations as a result of interest rate sensitivity? Yes [] No []
- 27.4 If the response to 27.3 is YES, does the reporting entity utilize:
- 27.41 Special accounting provision of SSAP No. 108 Yes [] No []
- 27.42 Permitted accounting practice Yes [] No []
- 27.43 Other accounting guidance Yes [] No []
- 27.5 By responding YES to 27.41 regarding utilizing the special accounting provisions of SSAP No. 108, the reporting entity attests to the following: Yes [] No []
- The reporting entity has obtained explicit approval from the domiciliary state.
 - Hedging strategy subject to the special accounting provisions is consistent with the requirements of VM-21.
 - Actuarial certification has been obtained which indicates that the hedging strategy is incorporated within the establishment of VM-21 reserves and provides the impact of the hedging strategy within the Actuarial Guideline Conditional Tail Expectation Amount.
 - Financial Officer Certification has been obtained which indicates that the hedging strategy meets the definition of a Clearly Defined Hedging Strategy within VM-21 and that the Clearly Defined Hedging Strategy is the hedging strategy being used by the company in its actual day-to-day risk mitigation efforts.
- 28.1 Were any preferred stocks or bonds owned as of December 31 of the current year mandatorily convertible into equity, or, at the option of the issuer, convertible into equity? Yes [] No [X]
- 28.2 If yes, state the amount thereof at December 31 of the current year. \$
29. Excluding items in Schedule E - Part 3 - Special Deposits, real estate, mortgage loans and investments held physically in the reporting entity's offices, vaults or safety deposit boxes, were all stocks, bonds and other securities, owned throughout the current year held pursuant to a custodial agreement with a qualified bank or trust company in accordance with Section 1, III - General Examination Considerations, F. Outsourcing of Critical Functions, Custodial or Safekeeping Agreements of the NAIC Financial Condition Examiners Handbook?..... Yes [X] No []

29.01 For agreements that comply with the requirements of the NAIC Financial Condition Examiners Handbook, complete the following:

1 Name of Custodian(s)	2 Custodian's Address
Bank of New York Mellon	BNY Mellon Asset Servicing 6023 Airport Road Oriskany, NY 13424

ANNUAL STATEMENT FOR THE YEAR 2023 OF THE Pawtucket Insurance Company

GENERAL INTERROGATORIES

29.02 For all agreements that do not comply with the requirements of the NAIC Financial Condition Examiners Handbook, provide the name, location and a complete explanation:

1 Name(s)	2 Location(s)	3 Complete Explanation(s)

29.03 Have there been any changes, including name changes, in the custodian(s) identified in 29.01 during the current year?..... Yes [] No [X]

29.04 If yes, give full and complete information relating thereto:

1 Old Custodian	2 New Custodian	3 Date of Change	4 Reason

29.05 Investment management – Identify all investment advisors, investment managers, broker/dealers, including individuals that have the authority to make investment decisions on behalf of the reporting entity. For assets that are managed internally by employees of the reporting entity, note as such. ["...that have access to the investment accounts"; "...handle securities"]

1 Name of Firm or Individual	2 Affiliation
BlackRock Investment Mgmt, LLC	U.....
KIRK HOWARD LUSK	I.....

29.0597 For those firms/individuals listed in the table for Question 29.05, do any firms/individuals unaffiliated with the reporting entity (i.e. designated with a "U") manage more than 10% of the reporting entity's invested assets?..... Yes [X] No []

29.0598 For firms/individuals unaffiliated with the reporting entity (i.e. designated with a "U") listed in the table for Question 29.05, does the total assets under management aggregate to more than 50% of the reporting entity's invested assets?..... Yes [X] No []

29.06 For those firms or individuals listed in the table for 29.05 with an affiliation code of "A" (affiliated) or "U" (unaffiliated), provide the information for the table below.

1 Central Registration Depository Number	2 Name of Firm or Individual	3 Legal Entity Identifier (LEI)	4 Registered With	5 Investment Management Agreement (IMA) Filed
108928	BlackRock Investment Mgmt, LLC	5493006MRTEZZ4S4CQ20	U.S. Security and Exchange Commission	

30.1 Does the reporting entity have any diversified mutual funds reported in Schedule D, Part 2 (diversified according to the Securities and Exchange Commission (SEC) in the Investment Company Act of 1940 [Section 5(b)(1)])? Yes [] No [X]

30.2 If yes, complete the following schedule:

1 CUSIP #	2 Name of Mutual Fund	3 Book/Adjusted Carrying Value
30.2999 - Total		0

30.3 For each mutual fund listed in the table above, complete the following schedule:

1 Name of Mutual Fund (from above table)	2 Name of Significant Holding of the Mutual Fund	3 Amount of Mutual Fund's Book/Adjusted Carrying Value Attributable to the Holding	4 Date of Valuation

ANNUAL STATEMENT FOR THE YEAR 2023 OF THE Pawtucket Insurance Company

GENERAL INTERROGATORIES

31. Provide the following information for all short-term and long-term bonds and all preferred stocks. Do not substitute amortized value or statement value for fair value.

	1	2	3
	Statement (Admitted) Value	Fair Value	Excess of Statement over Fair Value (-), or Fair Value over Statement (+)
31.1 Bonds			0
31.2 Preferred stocks	0		0
31.3 Totals	0	0	0

31.4 Describe the sources or methods utilized in determining the fair values:

32.1 Was the rate used to calculate fair value determined by a broker or custodian for any of the securities in Schedule D? Yes [] No [X]

32.2 If the answer to 32.1 is yes, does the reporting entity have a copy of the broker's or custodian's pricing policy (hard copy or electronic copy) for all brokers or custodians used as a pricing source? Yes [] No []

32.3 If the answer to 32.2 is no, describe the reporting entity's process for determining a reliable pricing source for purposes of disclosure of fair value for Schedule D:

33.1 Have all the filing requirements of the Purposes and Procedures Manual of the NAIC Investment Analysis Office been followed? Yes [X] No []

33.2 If no, list exceptions:

34. By self-designating 5GI securities, the reporting entity is certifying the following elements of each self-designated 5GI security:
 a. Documentation necessary to permit a full credit analysis of the security does not exist or an NAIC CRP credit rating for an FE or PL security is not available.
 b. Issuer or obligor is current on all contracted interest and principal payments.
 c. The insurer has an actual expectation of ultimate payment of all contracted interest and principal.
 Has the reporting entity self-designated 5GI securities? Yes [] No [X]

35. By self-designating PLGI securities, the reporting entity is certifying the following elements of each self-designated PLGI security:
 a. The security was purchased prior to January 1, 2018.
 b. The reporting entity is holding capital commensurate with the NAIC Designation reported for the security.
 c. The NAIC Designation was derived from the credit rating assigned by an NAIC CRP in its legal capacity as a NRSRO which is shown on a current private letter rating held by the insurer and available for examination by state insurance regulators.
 d. The reporting entity is not permitted to share this credit rating of the PL security with the SVO.
 Has the reporting entity self-designated PLGI securities? Yes [] No [X]

36. By assigning FE to a Schedule BA non-registered private fund, the reporting entity is certifying the following elements of each self-designated FE fund:
 a. The shares were purchased prior to January 1, 2019.
 b. The reporting entity is holding capital commensurate with the NAIC Designation reported for the security.
 c. The security had a public credit rating(s) with annual surveillance assigned by an NAIC CRP in its legal capacity as an NRSRO prior to January 1, 2019.
 d. The fund only or predominantly holds bonds in its portfolio.
 e. The current reported NAIC Designation was derived from the public credit rating(s) with annual surveillance assigned by an NAIC CRP in its legal capacity as an NRSRO.
 f. The public credit rating(s) with annual surveillance assigned by an NAIC CRP has not lapsed.
 Has the reporting entity assigned FE to Schedule BA non-registered private funds that complied with the above criteria? Yes [] No [X]

37. By rolling/renewing short-term or cash equivalent investments with continued reporting on Schedule DA, Part 1 or Schedule E Part 2 (identified through a code (%) in those investment schedules), the reporting entity is certifying to the following:
 a. The investment is a liquid asset that can be terminated by the reporting entity on the current maturity date.
 b. If the investment is with a nonrelated party or nonaffiliate, then it reflects an arms-length transaction with renewal completed at the discretion of all involved parties.
 c. If the investment is with a related party or affiliate, then the reporting entity has completed robust re-underwriting of the transaction for which documentation is available for regulator review.
 d. Short-term and cash equivalent investments that have been renewed/rolled from the prior period that do not meet the criteria in 37.a - 37.c are reported as long-term investments.
 Has the reporting entity rolled/renewed short-term or cash equivalent investments in accordance with these criteria? Yes [] No [] N/A []

ANNUAL STATEMENT FOR THE YEAR 2023 OF THE Pawtucket Insurance Company

GENERAL INTERROGATORIES

38.1 Does the reporting entity directly hold cryptocurrencies? Yes [] No [X]

38.2 If the response to 38.1 is yes, on what schedule are they reported?

39.1 Does the reporting entity directly or indirectly accept cryptocurrencies as payments for premiums on policies? Yes [] No [X]

39.2 If the response to 39.1 is yes, are the cryptocurrencies held directly or are they immediately converted to U.S. dollars?
 39.21 Held directly Yes [] No []
 39.22 Immediately converted to U.S. dollars Yes [] No []

39.3 If the response to 38.1 or 39.1 is yes, list all cryptocurrencies accepted for payments of premiums or that are held directly.

1	2	3
Name of Cryptocurrency	Immediately Converted to USD, Directly Held, or Both	Accepted for Payment of Premiums

OTHER

40.1 Amount of payments to trade associations, service organizations and statistical or rating bureaus, if any? \$

40.2 List the name of the organization and the amount paid if any such payment represented 25% or more of the total payments to trade associations, service organizations and statistical or rating bureaus during the period covered by this statement.

1	2
Name	Amount Paid

41.1 Amount of payments for legal expenses, if any? \$

41.2 List the name of the firm and the amount paid if any such payment represented 25% or more of the total payments for legal expenses during the period covered by this statement.

1	2
Name	Amount Paid

42.1 Amount of payments for expenditures in connection with matters before legislative bodies, officers or departments of government, if any? \$

42.2 List the name of the firm and the amount paid if any such payment represented 25% or more of the total payment expenditures in connection with matters before legislative bodies, officers, or departments of government during the period covered by this statement.

1	2
Name	Amount Paid

GENERAL INTERROGATORIES

PART 2 - PROPERTY AND CASUALTY INTERROGATORIES

1.1 Does the reporting entity have any direct Medicare Supplement Insurance in force? Yes [] No [X]

1.2 If yes, indicate premium earned on U. S. business only. \$ _____

1.3 What portion of Item (1.2) is not reported on the Medicare Supplement Insurance Experience Exhibit? \$ _____
 1.31 Reason for excluding

1.4 Indicate amount of earned premium attributable to Canadian and/or Other Alien not included in Item (1.2) above. \$ _____

1.5 Indicate total incurred claims on all Medicare Supplement Insurance. \$ _____ 0

1.6 Individual policies:

	Most current three years:	
1.61 Total premium earned	\$	0
1.62 Total incurred claims	\$	0
1.63 Number of covered lives		0
All years prior to most current three years		
1.64 Total premium earned	\$	0
1.65 Total incurred claims	\$	0
1.66 Number of covered lives		0

1.7 Group policies:

	Most current three years:	
1.71 Total premium earned	\$	0
1.72 Total incurred claims	\$	0
1.73 Number of covered lives		0
All years prior to most current three years		
1.74 Total premium earned	\$	0
1.75 Total incurred claims	\$	0
1.76 Number of covered lives		0

2. Health Test:

	1 Current Year	2 Prior Year
2.1 Premium Numerator		0
2.2 Premium Denominator		0
2.3 Premium Ratio (2.1/2.2)	0.000	0.000
2.4 Reserve Numerator		0
2.5 Reserve Denominator		0
2.6 Reserve Ratio (2.4/2.5)	0.000	0.000

3.1 Did the reporting entity issue participating policies during the calendar year? Yes [] No [X]

3.2 If yes, provide the amount of premium written for participating and/or non-participating policies during the calendar year:

3.21 Participating policies	\$	
3.22 Non-participating policies	\$	

4. For mutual reporting Entities and Reciprocal Exchanges Only:

4.1 Does the reporting entity issue assessable policies? Yes [] No []

4.2 Does the reporting entity issue non-assessable policies? Yes [] No []

4.3 If assessable policies are issued, what is the extent of the contingent liability of the policyholders? % _____

4.4 Total amount of assessments paid or ordered to be paid during the year on deposit notes or contingent premiums. \$ _____

5. For Reciprocal Exchanges Only:

5.1 Does the Exchange appoint local agents? Yes [] No []

5.2 If yes, is the commission paid:

5.21 Out of Attorney's-in-fact compensation.....	Yes [] No [] N/A []	
5.22 As a direct expense of the exchange.....	Yes [] No [] N/A []	

5.3 What expenses of the Exchange are not paid out of the compensation of the Attorney-in-fact?

5.4 Has any Attorney-in-fact compensation, contingent on fulfillment of certain conditions, been deferred? Yes [] No []

5.5 If yes, give full information

GENERAL INTERROGATORIES

PART 2 - PROPERTY AND CASUALTY INTERROGATORIES

- 6.1 What provision has this reporting entity made to protect itself from an excessive loss in the event of a catastrophe under a workers' compensation contract issued without limit of loss?
.....
- 6.2 Describe the method used to estimate this reporting entity's probable maximum insurance loss, and identify the type of insured exposures comprising that probable maximum loss, the locations of concentrations of those exposures and the external resources (such as consulting firms or computer software models), if any, used in the estimation process.
.....
- 6.3 What provision has this reporting entity made (such as a catastrophic reinsurance program) to protect itself from an excessive loss arising from the types and concentrations of insured exposures comprising its probable maximum property insurance loss?
.....
- 6.4 Does the reporting entity carry catastrophe reinsurance protection for at least one reinstatement, in an amount sufficient to cover its estimated probable maximum loss attributable to a single loss event or occurrence? Yes [] No [X]
- 6.5 If no, describe any arrangements or mechanisms employed by the reporting entity to supplement its catastrophe reinsurance program or to hedge its exposure to unreinsured catastrophic loss.
.....
- 7.1 Has this reporting entity reinsured any risk with any other entity under a quota share reinsurance contract that includes a provision that would limit the reinsurer's losses below the stated quota share percentage (e.g., a deductible, a loss ratio corridor, a loss cap, an aggregate limit or any similar provisions)? Yes [] No [X]
- 7.2 If yes, indicate the number of reinsurance contracts containing such provisions:
- 7.3 If yes, does the amount of reinsurance credit taken reflect the reduction in quota share coverage caused by any applicable limiting provision(s)? Yes [] No []
- 8.1 Has this reporting entity reinsured any risk with any other entity and agreed to release such entity from liability, in whole or in part, from any loss that may occur on this risk, or portion thereof, reinsured? Yes [] No [X]
- 8.2 If yes, give full information
.....
- 9.1 Has the reporting entity ceded any risk under any reinsurance contract (or under multiple contracts with the same reinsurer or its affiliates) for which during the period covered by the statement: (i) it recorded a positive or negative underwriting result greater than 5% of prior year-end surplus as regards policyholders or it reported calendar year written premium ceded or year-end loss and loss expense reserves ceded greater than 5% of prior year-end surplus as regards policyholders; (ii) it accounted for that contract as reinsurance and not as a deposit; and (iii) the contract(s) contain one or more of the following features or other features that would have similar results:
(a) A contract term longer than two years and the contract is noncancellable by the reporting entity during the contract term;
(b) A limited or conditional cancellation provision under which cancellation triggers an obligation by the reporting entity, or an affiliate of the reporting entity, to enter into a new reinsurance contract with the reinsurer, or an affiliate of the reinsurer;
(c) Aggregate stop loss reinsurance coverage;
(d) A unilateral right by either party (or both parties) to commute the reinsurance contract, whether conditional or not, except for such provisions which are only triggered by a decline in the credit status of the other party;
(e) A provision permitting reporting of losses, or payment of losses, less frequently than on a quarterly basis (unless there is no activity during the period); or
(f) Payment schedule, accumulating retentions from multiple years or any features inherently designed to delay timing of the reimbursement to the ceding entity. Yes [] No [X]
- 9.2 Has the reporting entity during the period covered by the statement ceded any risk under any reinsurance contract (or under multiple contracts with the same reinsurer or its affiliates), for which, during the period covered by the statement, it recorded a positive or negative underwriting result greater than 5% of prior year-end surplus as regards policyholders or it reported calendar year written premium ceded or year-end loss and loss expense reserves ceded greater than 5% of prior year-end surplus as regards policyholders; excluding cessions to approved pooling arrangements or to captive insurance companies that are directly or indirectly controlling, controlled by, or under common control with (i) one or more unaffiliated policyholders of the reporting entity, or (ii) an association of which one or more unaffiliated policyholders of the reporting entity is a member where:
(a) The written premium ceded to the reinsurer by the reporting entity or its affiliates represents fifty percent (50%) or more of the entire direct and assumed premium written by the reinsurer based on its most recently available financial statement; or
(b) Twenty-five percent (25%) or more of the written premium ceded to the reinsurer has been retroceded back to the reporting entity or its affiliates in a separate reinsurance contract. Yes [] No [X]
- 9.3 If yes to 9.1 or 9.2, please provide the following information in the Reinsurance Summary Supplemental Filing for General Interrogatory 9:
(a) The aggregate financial statement impact gross of all such ceded reinsurance contracts on the balance sheet and statement of income;
(b) A summary of the reinsurance contract terms and indicate whether it applies to the contracts meeting the criteria in 9.1 or 9.2; and
(c) A brief discussion of management's principle objectives in entering into the reinsurance contract including the economic purpose to be achieved.
- 9.4 Except for transactions meeting the requirements of paragraph 36 of SSAP No. 62R - Property and Casualty Reinsurance, has the reporting entity ceded any risk under any reinsurance contract (or multiple contracts with the same reinsurer or its affiliates) during the period covered by the financial statement, and either:
(a) Accounted for that contract as reinsurance (either prospective or retroactive) under statutory accounting principles ("SAP") and as a deposit under generally accepted accounting principles ("GAAP"); or
(b) Accounted for that contract as reinsurance under GAAP and as a deposit under SAP? Yes [] No [X]
- 9.5 If yes to 9.4, explain in the Reinsurance Summary Supplemental Filing for General Interrogatory 9 (Section D) why the contract(s) is treated differently for GAAP and SAP.
- 9.6 The reporting entity is exempt from the Reinsurance Attestation Supplement under one or more of the following criteria:
(a) The entity does not utilize reinsurance; or, Yes [X] No []
(b) The entity only engages in a 100% quota share contract with an affiliate and the affiliated or lead company has filed an attestation supplement; or Yes [] No []
(c) The entity has no external cessions and only participates in an intercompany pool and the affiliated or lead company has filed an attestation supplement. Yes [] No []
10. If the reporting entity has assumed risks from another entity, there should be charged on account of such reinsurances a reserve equal to that which the original entity would have been required to charge had it retained the risks. Has this been done? Yes [] No [] N/A [X]

GENERAL INTERROGATORIES

PART 2 - PROPERTY AND CASUALTY INTERROGATORIES

- 11.1 Has the reporting entity guaranteed policies issued by any other entity and now in force? Yes [] No [X]
- 11.2 If yes, give full information
.....
- 12.1 If the reporting entity recorded accrued retrospective premiums on insurance contracts on Line 15.3 of the asset schedule, Page 2, state the amount of corresponding liabilities recorded for:
- 12.11 Unpaid losses \$
- 12.12 Unpaid underwriting expenses (including loss adjustment expenses) \$
- 12.2 Of the amount on Line 15.3, Page 2, state the amount which is secured by letters of credit, collateral and other funds \$
- 12.3 If the reporting entity underwrites commercial insurance risks, such as workers' compensation, are premium notes or promissory notes accepted from its insureds covering unpaid premiums and/or unpaid losses? Yes [] No [] N/A []
- 12.4 If yes, provide the range of interest rates charged under such notes during the period covered by this statement:
- 12.41 From %
- 12.42 To..... %
- 12.5 Are letters of credit or collateral and other funds received from insureds being utilized by the reporting entity to secure premium notes or promissory notes taken by a reporting entity, or to secure any of the reporting entity's reported direct unpaid loss reserves, including unpaid losses under loss deductible features of commercial policies? Yes [] No [X]
- 12.6 If yes, state the amount thereof at December 31 of the current year:
- 12.61 Letters of credit \$
- 12.62 Collateral and other funds..... \$
- 13.1 Largest net aggregate amount insured in any one risk (excluding workers' compensation): \$
- 13.2 Does any reinsurance contract considered in the calculation of this amount include an aggregate limit of recovery without also including a reinstatement provision? Yes [] No [X]
- 13.3 State the number of reinsurance contracts (excluding individual facultative risk certificates, but including facultative programs, automatic facilities or facultative obligatory contracts) considered in the calculation of the amount.
- 14.1 Is the company a cedant in a multiple cedant reinsurance contract? Yes [] No [X]
- 14.2 If yes, please describe the method of allocating and recording reinsurance among the cedants:
.....
- 14.3 If the answer to 14.1 is yes, are the methods described in item 14.2 entirely contained in the respective multiple cedant reinsurance contracts? Yes [] No []
- 14.4 If the answer to 14.3 is no, are all the methods described in 14.2 entirely contained in written agreements? Yes [] No []
- 14.5 If the answer to 14.4 is no, please explain:
.....
- 15.1 Has the reporting entity guaranteed any financed premium accounts? Yes [] No [X]
- 15.2 If yes, give full information
.....
- 16.1 Does the reporting entity write any warranty business? Yes [] No [X]
If yes, disclose the following information for each of the following types of warranty coverage:

	1 Direct Losses Incurred	2 Direct Losses Unpaid	3 Direct Written Premium	4 Direct Premium Unearned	5 Direct Premium Earned
16.11 Home
16.12 Products
16.13 Automobile
16.14 Other*

* Disclose type of coverage:
.....

GENERAL INTERROGATORIES

PART 2 - PROPERTY AND CASUALTY INTERROGATORIES

17.1 Does the reporting entity include amounts recoverable on unauthorized reinsurance in Schedule F - Part 3 that is exempt from the statutory provision for unauthorized reinsurance? Yes [] No []

Incurred but not reported losses on contracts in force prior to July 1, 1984, and not subsequently renewed are exempt from the statutory provision for unauthorized reinsurance. Provide the following information for this exemption:

17.11 Gross amount of unauthorized reinsurance in Schedule F - Part 3 exempt from the statutory provision for unauthorized reinsurance	\$
17.12 Unfunded portion of Interrogatory 17.11	\$
17.13 Paid losses and loss adjustment expenses portion of Interrogatory 17.11.....	\$
17.14 Case reserves portion of Interrogatory 17.11	\$
17.15 Incurred but not reported portion of Interrogatory 17.11	\$
17.16 Unearned premium portion of Interrogatory 17.11	\$
17.17 Contingent commission portion of Interrogatory 17.11	\$

18.1 Do you act as a custodian for health savings accounts? Yes [] No []

18.2 If yes, please provide the amount of custodial funds held as of the reporting date. \$

18.3 Do you act as an administrator for health savings accounts? Yes [] No []

18.4 If yes, please provide the balance of funds administered as of the reporting date. \$

19. Is the reporting entity licensed or chartered, registered, qualified, eligible or writing business in at least two states? Yes [] No []

19.1 If no, does the reporting entity assume reinsurance business that covers risks residing in at least one state other than the state of domicile of the reporting entity? Yes [] No []

ANNUAL STATEMENT FOR THE YEAR 2023 OF THE Pawtucket Insurance Company

FIVE-YEAR HISTORICAL DATA

Show amounts in whole dollars only, no cents; show percentages to one decimal place, i.e. 17.6.

	1 2023	2 2022	3 2021	4 2020	5 2019
Gross Premiums Written (Page 8, Part 1B Cols. 1, 2 & 3)					
1. Liability lines (Lines 11, 16, 17, 18 & 19)	0	0	0	0	0
2. Property lines (Lines 1, 2, 9, 12, 21 & 26)	0	0	0	0	0
3. Property and liability combined lines (Lines 3, 4, 5, 8, 22 & 27)	0	0	0	0	0
4. All other lines (Lines 6, 10, 13, 14, 15, 23, 24, 28, 29, 30 & 34)	0	0	0	0	0
5. Nonproportional reinsurance lines (Lines 31, 32 & 33)	0	0	0	0	0
6. Total (Line 35)	0	0	0	0	0
Net Premiums Written (Page 8, Part 1B, Col. 6)					
7. Liability lines (Lines 11, 16, 17, 18 & 19)	0	0	0	0	0
8. Property lines (Lines 1, 2, 9, 12, 21 & 26)	0	0	0	0	0
9. Property and liability combined lines (Lines 3, 4, 5, 8, 22 & 27)	0	0	0	0	0
10. All other lines (Lines 6, 10, 13, 14, 15, 23, 24, 28, 29, 30 & 34)	0	0	0	0	0
11. Nonproportional reinsurance lines (Lines 31, 32 & 33)	0	0	0	0	0
12. Total (Line 35)	0	0	0	0	0
Statement of Income (Page 4)					
13. Net underwriting gain (loss) (Line 8)	(22,279)	(37,819)	(33,655)	(78,153)	30,111
14. Net investment gain (loss) (Line 11)	191,772	47,204	(667)	12,406	50,331
15. Total other income (Line 15)	0	0	0	0	0
16. Dividends to policyholders (Line 17)	0	0	0	0	0
17. Federal and foreign income taxes incurred (Line 19)	35,443	2,157	(7,106)	293,505	18,568
18. Net income (Line 20)	134,050	7,228	(27,216)	(359,252)	61,874
Balance Sheet Lines (Pages 2 and 3)					
19. Total admitted assets excluding protected cell business (Page 2, Line 26, Col. 3)	4,270,874	4,098,303	4,086,442	4,455,401	4,502,028
20. Premiums and considerations (Page 2, Col. 3)					
20.1 In course of collection (Line 15.1)	0	0	0	0	0
20.2 Deferred and not yet due (Line 15.2)	0	0	0	0	0
20.3 Accrued retrospective premiums (Line 15.3)	0	0	0	0	0
21. Total liabilities excluding protected cell business (Page 3, Line 26)	41,515	3,095	(438)	341,590	332,895
22. Losses (Page 3, Line 1)					
23. Loss adjustment expenses (Page 3, Line 3)					
24. Unearned premiums (Page 3, Line 9)					
25. Capital paid up (Page 3, Lines 30 & 31)	1,000,000	1,000,000	1,000,000	1,000,000	1,000,000
26. Surplus as regards policyholders (Page 3, Line 37)	4,229,358	4,095,208	4,086,879	4,113,810	4,169,133
Cash Flow (Page 5)					
27. Net cash from operations (Line 11)	172,570	17,967	(369,545)	(49,136)	2,842,412
Risk-Based Capital Analysis					
28. Total adjusted capital	4,229,358	4,095,208	4,086,879	4,113,810	4,169,133
29. Authorized control level risk-based capital	8,550	8,274	8,254	8,835	9,386
Percentage Distribution of Cash, Cash Equivalents and Invested Assets (Page 2, Col. 3) (Line divided by Page 2, Line 12, Col. 3) x100.0					
30. Bonds (Line 1)	0.0	0.0	0.0	0.0	0.0
31. Stocks (Lines 2.1 & 2.2)	0.0	0.0	0.0	0.0	0.0
32. Mortgage loans on real estate (Lines 3.1 and 3.2)	0.0	0.0	0.0	0.0	0.0
33. Real estate (Lines 4.1, 4.2 & 4.3)	0.0	0.0	0.0	0.0	0.0
34. Cash, cash equivalents and short-term investments (Line 5)	100.0	100.0	100.0	100.0	100.0
35. Contract loans (Line 6)	0.0	0.0	0.0	0.0	0.0
36. Derivatives (Line 7)	0.0	0.0	0.0	0.0	0.0
37. Other invested assets (Line 8)	0.0	0.0	0.0	0.0	0.0
38. Receivables for securities (Line 9)	0.0	0.0	0.0	0.0	0.0
39. Securities lending reinvested collateral assets (Line 10)	0.0	0.0	0.0	0.0	0.0
40. Aggregate write-ins for invested assets (Line 11)	0.0	0.0	0.0	0.0	0.0
41. Cash, cash equivalents and invested assets (Line 12)	100.0	100.0	100.0	100.0	100.0
Investments in Parent, Subsidiaries and Affiliates					
42. Affiliated bonds (Schedule D, Summary, Line 12, Col. 1)				0	0
43. Affiliated preferred stocks (Schedule D, Summary, Line 18, Col. 1)				0	0
44. Affiliated common stocks (Schedule D, Summary, Line 24, Col. 1)				0	0
45. Affiliated short-term investments (subtotals included in Schedule DA Verification, Col. 5, Line 10)				0	0
46. Affiliated mortgage loans on real estate				0	0
47. All other affiliated				0	0
48. Total of above Lines 42 to 47	0	0	0	0	0
49. Total Investment in Parent included in Lines 42 to 47 above				0	0
50. Percentage of investments in parent, subsidiaries and affiliates to surplus as regards policyholders (Line 48 above divided by Page 3, Col. 1, Line 37 x 100.0)	0.0	0.0	0.0	0.0	0.0

ANNUAL STATEMENT FOR THE YEAR 2023 OF THE Pawtucket Insurance Company

FIVE-YEAR HISTORICAL DATA

(Continued)

	1 2023	2 2022	3 2021	4 2020	5 2019
Capital and Surplus Accounts (Page 4)					
51. Net unrealized capital gains (losses) (Line 24)		2	6	25	(32)
52. Dividends to stockholders (Line 35)				0	0
53. Change in surplus as regards policyholders for the year (Line 38)	134,150	8,329	(26,931)	(55,323)	63,518
Gross Losses Paid (Page 9, Part 2, Cols. 1 & 2)					
54. Liability lines (Lines 11, 16, 17, 18 & 19)	0	0	0	0	0
55. Property lines (Lines 1, 2, 9, 12, 21 & 26)	0	0	0	0	(1,651)
56. Property and liability combined lines (Lines 3, 4, 5, 8, 22 & 27)	(2,844)	(3,576)	(3,895)	(2,067)	212,909
57. All other lines (Lines 6, 10, 13, 14, 15, 23, 24, 28, 29, 30 & 34)	0	0	0	0	0
58. Nonproportional reinsurance lines (Lines 31, 32 & 33)	0	0	0	0	0
59. Total (Line 35)	(2,844)	(3,576)	(3,895)	(2,067)	211,258
Net Losses Paid (Page 9, Part 2, Col. 4)					
60. Liability lines (Lines 11, 16, 17, 18 & 19)	0	0	0	0	0
61. Property lines (Lines 1, 2, 9, 12, 21 & 26)	0	0	0	0	(1,651)
62. Property and liability combined lines (Lines 3, 4, 5, 8, 22 & 27)	(2,844)	(3,576)	(3,895)	(2,067)	212,909
63. All other lines (Lines 6, 10, 13, 14, 15, 23, 24, 28, 29, 30 & 34)	0	0	0	0	0
64. Nonproportional reinsurance lines (Lines 31, 32 & 33)	0	0	0	0	0
65. Total (Line 35)	(2,844)	(3,576)	(3,895)	(2,067)	211,258
Operating Percentages (Page 4) (Line divided by Page 4, Line 1) x 100.0					
66. Premiums earned (Line 1)	100.0	100.0	100.0	100.0	100.0
67. Losses incurred (Line 2)	0.0	0.0	0.0	0.0	0.0
68. Loss expenses incurred (Line 3)	0.0	0.0	0.0	0.0	0.0
69. Other underwriting expenses incurred (Line 4)	0.0	0.0	0.0	0.0	0.0
70. Net underwriting gain (loss) (Line 8)	0.0	0.0	0.0	0.0	0.0
Other Percentages					
71. Other underwriting expenses to net premiums written (Page 4, Lines 4 + 5 - 15 divided by Page 8, Part 1B, Col. 6, Line 35 x 100.0)	0.0	0.0	0.0	0.0	0.0
72. Losses and loss expenses incurred to premiums earned (Page 4, Lines 2 + 3 divided by Page 4, Line 1 x 100.0)	0.0	0.0	0.0	0.0	0.0
73. Net premiums written to policyholders' surplus (Page 8, Part 1B, Col. 6, Line 35 divided by Page 3, Line 37, Col. 1 x 100.0)	0.0	0.0	0.0	0.0	0.0
One Year Loss Development (\$000 omitted)					
74. Development in estimated losses and loss expenses incurred prior to current year (Schedule P - Part 2 - Summary, Line 12, Col. 11)	0	0	0	0	(35)
75. Percent of development of losses and loss expenses incurred to policyholders' surplus of prior year end (Line 74 above divided by Page 4, Line 21, Col. 1 x 100.0).....	0.0	0.0	0.0	0.0	(0.8)
Two Year Loss Development (\$000 omitted)					
76. Development in estimated losses and loss expenses incurred two years before the current year and prior year (Schedule P, Part 2 - Summary, Line 12, Col. 12)	0	0	0	(35)	(120)
77. Percent of development of losses and loss expenses incurred to reported policyholders' surplus of second prior year end (Line 76 above divided by Page 4, Line 21, Col. 2 x 100.0)	0.0	0.0	0.0	(0.8)	(4.5)

NOTE: If a party to a merger, have the two most recent years of this exhibit been restated due to a merger in compliance with the disclosure requirements of SSAP No. 3, Accounting Changes and Correction of Errors? Yes [] No []
 If no, please explain:

ANNUAL STATEMENT FOR THE YEAR 2023 OF THE Pawtucket Insurance Company
SCHEDULE P - ANALYSIS OF LOSSES AND LOSS EXPENSES
SCHEDULE P - PART 1 - SUMMARY

(\$000 OMITTED)

Years in Which Premiums Were Earned and Losses Were Incurred	Premiums Earned			Loss and Loss Expense Payments						10 Salvage and Subrogation Received	11 Total Net Paid Cols (4 - 5 + 6 - 7 + 8 - 9)	12 Number of Claims Reported Direct and Assumed
	1 Direct and Assumed	2 Ceded	3 Net (1 - 2)	Loss Payments		Defense and Cost Containment Payments		Adjusting and Other Payments				
				4 Direct and Assumed	5 Ceded	6 Direct and Assumed	7 Ceded	8 Direct and Assumed	9 Ceded			
1. Prior.....	XXX	XXX	XXX	0	0	0	0	0	0	0	0	XXX
2. 2014.....	0	0	0	0	0	0	0	0	0	0	0	XXX
3. 2015.....	0	0	0	0	0	0	0	0	0	0	0	XXX
4. 2016.....	0	0	0	0	0	0	0	0	0	0	0	XXX
5. 2017.....	0	0	0	0	0	0	0	0	0	0	0	XXX
6. 2018.....	0	0	0	0	0	0	0	0	0	0	0	XXX
7. 2019.....	0	0	0	0	0	0	0	0	0	0	0	XXX
8. 2020.....	0	0	0	(2,060)	0	0	0	0	0	2,060	(2,060)	XXX
9. 2021.....	0	0	0	0	0	0	0	0	0	0	0	XXX
10. 2022.....	0	0	0	0	0	0	0	0	0	0	0	XXX
11. 2023.....	0	0	0	0	0	0	0	0	0	0	0	XXX
12. Totals	XXX	XXX	XXX	(2,060)	0	0	0	0	0	2,060	(2,060)	XXX

	Losses Unpaid				Defense and Cost Containment Unpaid				Adjusting and Other Unpaid		23 Salvage and Subrogation Anticipated	24 Total Net Losses and Expenses Unpaid	25 Number of Claims Outstanding Direct and Assumed
	Case Basis		Bulk + IBNR		Case Basis		Bulk + IBNR						
	13	14	15	16	17	18	19	20	21	22			
	Direct and Assumed	Ceded	Direct and Assumed	Ceded	Direct and Assumed	Ceded	Direct and Assumed	Ceded	Direct and Assumed	Ceded			
1. Prior.....	0	0	0	0	0	0	0	0	0	0	0	0	XXX
2. 2014.....	0	0	0	0	0	0	0	0	0	0	0	0	XXX
3. 2015.....	0	0	0	0	0	0	0	0	0	0	0	0	XXX
4. 2016.....	0	0	0	0	0	0	0	0	0	0	0	0	XXX
5. 2017.....	0	0	0	0	0	0	0	0	0	0	0	0	XXX
6. 2018.....	0	0	0	0	0	0	0	0	0	0	0	0	XXX
7. 2019.....	0	0	0	0	0	0	0	0	0	0	0	0	XXX
8. 2020.....	0	0	0	0	0	0	0	0	0	0	0	0	XXX
9. 2021.....	0	0	0	0	0	0	0	0	0	0	0	0	XXX
10. 2022.....	0	0	0	0	0	0	0	0	0	0	0	0	XXX
11. 2023.....	0	0	0	0	0	0	0	0	0	0	0	0	XXX
12. Totals	0	0	0	0	0	0	0	0	0	0	0	0	XXX

	Total Losses and Loss Expenses Incurred			Loss and Loss Expense Percentage (Incurred /Premiums Earned)			Nontabular Discount		34 Inter-Company Pooling Participation Percentage	Net Balance Sheet Reserves After Discount	
	26	27	28	29	30	31	32	33		35	36
	Direct and Assumed	Ceded	Net	Direct and Assumed	Ceded	Net	Loss	Loss Expense		Losses Unpaid	Loss Expenses Unpaid
1. Prior.....	XXX	XXX	XXX	XXX	XXX	XXX	0	0	XXX	0	0
2. 2014.....	0	0	0	0.0	0.0	0.0	0	0	0	0	0
3. 2015.....	0	0	0	0.0	0.0	0.0	0	0	0	0	0
4. 2016.....	0	0	0	0.0	0.0	0.0	0	0	0	0	0
5. 2017.....	0	0	0	0.0	0.0	0.0	0	0	0	0	0
6. 2018.....	0	0	0	0.0	0.0	0.0	0	0	0	0	0
7. 2019.....	0	0	0	0.0	0.0	0.0	0	0	0	0	0
8. 2020.....	(2,060)	0	(2,060)	0.0	0.0	0.0	0	0	0	0	0
9. 2021.....	0	0	0	0.0	0.0	0.0	0	0	0	0	0
10. 2022.....	0	0	0	0.0	0.0	0.0	0	0	0	0	0
11. 2023.....	0	0	0	0.0	0.0	0.0	0	0	0	0	0
12. Totals	XXX	XXX	XXX	XXX	XXX	XXX	0	0	XXX	0	0

Note: Parts 2 and 4 are gross of all discounting, including tabular discounting. Part 1 is gross of only nontabular discounting, which is reported in Columns 32 and 33 of Part 1. The tabular discount, if any, is reported in the Notes to Financial Statements which will reconcile Part 1 with Parts 2 and 4.

ANNUAL STATEMENT FOR THE YEAR 2023 OF THE Pawtucket Insurance Company

SCHEDULE P - PART 2 - SUMMARY

Years in Which Losses Were Incurred	INCURRED NET LOSSES AND DEFENSE AND COST CONTAINMENT EXPENSES REPORTED AT YEAR END (\$000 OMITTED)										DEVELOPMENT	
	1 2014	2 2015	3 2016	4 2017	5 2018	6 2019	7 2020	8 2021	9 2022	10 2023	11 One Year	12 Two Year
1. Prior.....	269	412	494	617	532	497	497	497	497	497	0	0
2. 2014.....	0	0	0	0	0	0	0	0	0	0	0	0
3. 2015.....	XXX	0	0	0	0	0	0	0	0	0	0	0
4. 2016.....	XXX	XXX	0	0	0	0	0	0	0	0	0	0
5. 2017.....	XXX	XXX	XXX	0	0	0	0	0	0	0	0	0
6. 2018.....	XXX	XXX	XXX	XXX	0	0	0	0	0	0	0	0
7. 2019.....	XXX	XXX	XXX	XXX	XXX	0	0	0	0	0	0	0
8. 2020.....	XXX	XXX	XXX	XXX	XXX	XXX	(2,060)	(2,060)	(2,060)	(2,060)	0	0
9. 2021.....	XXX	XXX	XXX	XXX	XXX	XXX	XXX	0	0	0	0	0
10. 2022.....	XXX	XXX	XXX	XXX	XXX	XXX	XXX	XXX	0	0	0	XXX
11. 2023.....	XXX	XXX	XXX	XXX	XXX	XXX	XXX	XXX	XXX	0	XXX	XXX
12. Totals											0	0

SCHEDULE P - PART 3 - SUMMARY

Years in Which Losses Were Incurred	CUMULATIVE PAID NET LOSSES AND DEFENSE AND COST CONTAINMENT EXPENSES REPORTED AT YEAR END (\$000 OMITTED)										11 Number of Claims Closed With Loss Payment	12 Number of Claims Closed Without Loss Payment
	1 2014	2 2015	3 2016	4 2017	5 2018	6 2019	7 2020	8 2021	9 2022	10 2023		
1. Prior.....	000	86	166	263	272	497	497	497	497	497	XXX	XXX
2. 2014.....	0	0	0	0	0	0	0	0	0	0	XXX	XXX
3. 2015.....	XXX	0	0	0	0	0	0	0	0	0	XXX	XXX
4. 2016.....	XXX	XXX	0	0	0	0	0	0	0	0	XXX	XXX
5. 2017.....	XXX	XXX	XXX	0	0	0	0	0	0	0	XXX	XXX
6. 2018.....	XXX	XXX	XXX	XXX	0	0	0	0	0	0	XXX	XXX
7. 2019.....	XXX	XXX	XXX	XXX	XXX	0	0	0	0	0	XXX	XXX
8. 2020.....	XXX	XXX	XXX	XXX	XXX	XXX	(2,060)	(2,060)	(2,060)	(2,060)	XXX	XXX
9. 2021.....	XXX	XXX	XXX	XXX	XXX	XXX	XXX	0	0	0	XXX	XXX
10. 2022.....	XXX	XXX	XXX	XXX	XXX	XXX	XXX	XXX	0	0	XXX	XXX
11. 2023.....	XXX	XXX	XXX	XXX	XXX	XXX	XXX	XXX	XXX	0	XXX	XXX

SCHEDULE P - PART 4 - SUMMARY

Years in Which Losses Were Incurred	BULK AND IBNR RESERVES ON NET LOSSES AND DEFENSE AND COST CONTAINMENT EXPENSES REPORTED AT YEAR END (\$000 OMITTED)									
	1 2014	2 2015	3 2016	4 2017	5 2018	6 2019	7 2020	8 2021	9 2022	10 2023
1. Prior.....	203	200	225	325	25	0	0	0	0	0
2. 2014.....	0	0	0	0	0	0	0	0	0	0
3. 2015.....	XXX	0	0	0	0	0	0	0	0	0
4. 2016.....	XXX	XXX	0	0	0	0	0	0	0	0
5. 2017.....	XXX	XXX	XXX	0	0	0	0	0	0	0
6. 2018.....	XXX	XXX	XXX	XXX	0	0	0	0	0	0
7. 2019.....	XXX	XXX	XXX	XXX	XXX	0	0	0	0	0
8. 2020.....	XXX	XXX	XXX	XXX	XXX	XXX	0	0	0	0
9. 2021.....	XXX	XXX	XXX	XXX	XXX	XXX	XXX	0	0	0
10. 2022.....	XXX	XXX	XXX	XXX	XXX	XXX	XXX	XXX	0	0
11. 2023.....	XXX	XXX	XXX	XXX	XXX	XXX	XXX	XXX	XXX	0

SCHEDULE T - EXHIBIT OF PREMIUMS WRITTEN

Allocated by States and Territories

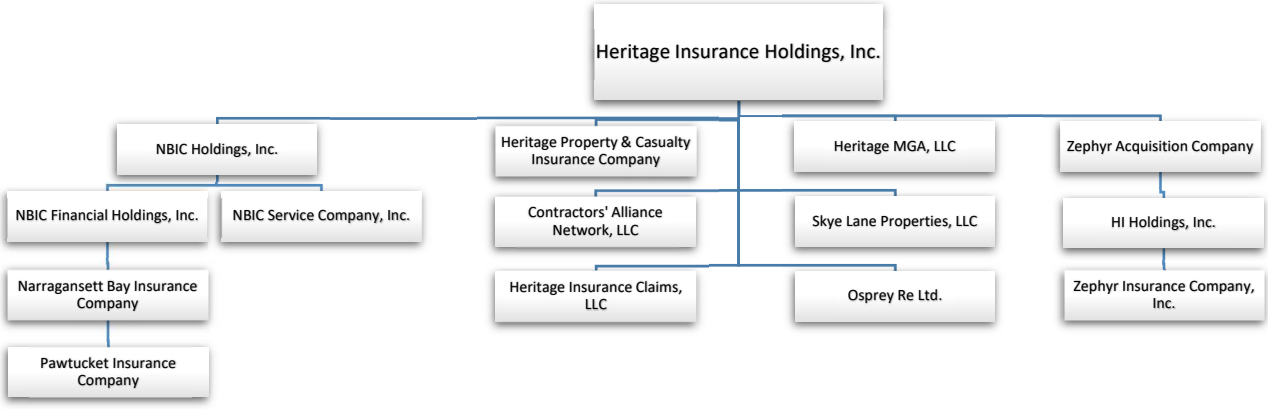
States, Etc.	1 Active Status (a)	Gross Premiums, Including Policy and Membership Fees, Less Return Premiums and Premiums on Policies Not Taken		4 Dividends Paid or Credited to Policyholders on Direct Business	5 Direct Losses Paid (Deducting Salvage)	6 Direct Losses Incurred	7 Direct Losses Unpaid	8 Finance and Service Charges Not Included in Premiums	9 Direct Premiums Written for Federal Purchasing Groups (Included in Column 2)
		2 Direct Premiums Written	3 Direct Premiums Earned						
1. Alabama	AL	N							
2. Alaska	AK	N							
3. Arizona	AZ	N							
4. Arkansas	AR	N							
5. California	CA	N							
6. Colorado	CO	N							
7. Connecticut	CT	N							
8. Delaware	DE	N							
9. District of Columbia	DC	N							
10. Florida	FL	N							
11. Georgia	GA	N							
12. Hawaii	HI	N							
13. Idaho	ID	N							
14. Illinois	IL	N							
15. Indiana	IN	N							
16. Iowa	IA	N							
17. Kansas	KS	N							
18. Kentucky	KY	N							
19. Louisiana	LA	N							
20. Maine	ME	N							
21. Maryland	MD	N							
22. Massachusetts	MA	N							
23. Michigan	MI	N							
24. Minnesota	MN	N							
25. Mississippi	MS	N							
26. Missouri	MO	N							
27. Montana	MT	N							
28. Nebraska	NE	N							
29. Nevada	NV	N							
30. New Hampshire	NH	L							
31. New Jersey	NJ	L							
32. New Mexico	NM	N							
33. New York	NY	L							
34. North Carolina	NC	N							
35. North Dakota	ND	N							
36. Ohio	OH	N							
37. Oklahoma	OK	N							
38. Oregon	OR	N							
39. Pennsylvania	PA	N	0	0	0	(2,844)	(2,844)	0	
40. Rhode Island	RI	L							
41. South Carolina	SC	N							
42. South Dakota	SD	N							
43. Tennessee	TN	N							
44. Texas	TX	N							
45. Utah	UT	N							
46. Vermont	VT	N							
47. Virginia	VA	N							
48. Washington	WA	N							
49. West Virginia	WV	N							
50. Wisconsin	WI	N							
51. Wyoming	WY	N							
52. American Samoa	AS	N							
53. Guam	GU	N							
54. Puerto Rico	PR	N							
55. U.S. Virgin Islands	VI	N							
56. Northern Mariana Islands	MP	N							
57. Canada	CAN	N							
58. Aggregate other alien	OT	XXX	0	0	0	0	0	0	0
59. Totals	XXX	0	0	0	0	(2,844)	(2,844)	0	0
DETAILS OF WRITE-INS									
58001.	XXX								
58002.	XXX								
58003.	XXX								
58998. Summary of remaining write-ins for Line 58 from overflow page	XXX	0	0	0	0	0	0	0	0
58999. Totals (Lines 58001 through 58003 plus 58998)(Line 58 above)	XXX	0	0	0	0	0	0	0	0

(a) Active Status Counts:

1. L - Licensed or Chartered - Licensed insurance carrier or domiciled RRG.....	4	4. Q - Qualified - Qualified or accredited reinsurer.....	0
2. R - Registered - Non-domiciled RRGs.....	0	5. D - Domestic Surplus Lines Insurer (DSL) - Reporting entities authorized to write surplus lines in the state of domicile.....	0
3. E - Eligible - Reporting entities eligible or approved to write surplus lines in the state (other than their state of domicile - see DSLI).....	0	6. N - None of the above - Not allowed to write business in the state.....	53

(b) Explanation of basis of allocation of premiums by states, etc.

N/A



OVERFLOW PAGE FOR WRITE-INS

Additional Write-ins for Assets Line 25

	Current Year			Prior Year
	1 Assets	2 Nonadmitted Assets	3 Net Admitted Assets (Cols. 1 - 2)	4 Net Admitted Assets
2504.			0	0
2505.			0	0
2597. Summary of remaining write-ins for Line 25 from overflow page	0	0	0	0