



HEALTH QUARTERLY STATEMENT
 AS OF JUNE 30, 2024
 OF THE CONDITION AND AFFAIRS OF THE
Molina Healthcare of Rhode Island, Inc.

NAIC Group Code 1531 1531 NAIC Company Code 17290 Employer's ID Number 87-2738451
 (Current) (Prior)

Organized under the Laws of Rhode Island, State of Domicile or Port of Entry RI

Country of Domicile United States of America

Licensed as business type: Health Maintenance Organization

Is HMO Federally Qualified? Yes [] No [X]

Incorporated/Organized 05/10/2022 Commenced Business _____

Statutory Home Office 10 Dorrance Street, Suite 700, Providence, RI, US 92903
 (Street and Number) (City or Town, State, Country and Zip Code)

Main Administrative Office 200 Oceangate, Suite 100
 (Street and Number)
Long Beach, CA, US 90802, 888-562-5442
 (City or Town, State, Country and Zip Code) (Area Code) (Telephone Number)

Mail Address 200 Oceangate, Suite 100, Long Beach, CA, US 90802
 (Street and Number or P.O. Box) (City or Town, State, Country and Zip Code)

Primary Location of Books and Records 10 Dorrance Street, Suite 700
 (Street and Number)
Providence, RI, US 92903, 888-562-5442
 (City or Town, State, Country and Zip Code) (Area Code) (Telephone Number)

Internet Website Address www.molinahealthcare.com

Statutory Statement Contact Ying Veronica Wang, 562-542-1935
 (Name) (Area Code) (Telephone Number)
veronica.wang@molinahealthcare.com, _____
 (E-mail Address) (FAX Number)

OFFICERS

President William Joseph Graham Chief Financial Officer Mark Lowell Keim
 Secretary Jeff Don Barlow

OTHER

DIRECTORS OR TRUSTEES

William Joseph Graham Lisa Roland Faust Ronald Douglas Kurtz

State of Rhode Island SS:
 County of Kent

The officers of this reporting entity being duly sworn, each depose and say that they are the described officers of said reporting entity, and that on the reporting period stated above, all of the herein described assets were the absolute property of the said reporting entity, free and clear from any liens or claims thereon, except as herein stated, and that this statement, together with related exhibits, schedules and explanations therein contained, annexed or referred to, is a full and true statement of all the assets and liabilities and of the condition and affairs of the said reporting entity as of the reporting period stated above, and of its income and deductions therefrom for the period ended, and have been completed in accordance with the NAIC Annual Statement Instructions and Accounting Practices and Procedures manual except to the extent that: (1) state law may differ; or, (2) that state rules or regulations require differences in reporting not related to accounting practices and procedures, according to the best of their information, knowledge and belief, respectively. Furthermore, the scope of this attestation by the described officers also includes the related corresponding electronic filing with the NAIC, when required, that is an exact copy (except for formatting differences due to electronic filing) of the enclosed statement. The electronic filing may be requested by various regulators in lieu of or in addition to the enclosed statement.

William Joseph Graham Mark Lowell Keim Jeff Don Barlow
 President Chief Financial Officer Secretary

Subscribed and sworn to before me this
31st day of July, 2024

Linda A. Gulley

- a. Is this an original filing? Yes [X] No []
 b. If no,
 1. State the amendment number.....
 2. Date filed
 3. Number of pages attached.....



STATEMENT AS OF JUNE 30, 2024 OF THE Molina Healthcare of Rhode Island, Inc.

ASSETS

	Current Statement Date			4 December 31 Prior Year Net Admitted Assets
	1 Assets	2 Nonadmitted Assets	3 Net Admitted Assets (Cols. 1 - 2)	
1. Bonds	123,041		123,041	109,238
2. Stocks:				
2.1 Preferred stocks			0	0
2.2 Common stocks			0	0
3. Mortgage loans on real estate:				
3.1 First liens			0	0
3.2 Other than first liens.....			0	0
4. Real estate:				
4.1 Properties occupied by the company (less \$ encumbrances)			0	0
4.2 Properties held for the production of income (less \$ encumbrances)			0	0
4.3 Properties held for sale (less \$ encumbrances)			0	0
5. Cash (\$2,891,483), cash equivalents (\$4,805) and short-term investments (\$)	2,896,288		2,896,288	2,910,326
6. Contract loans (including \$ premium notes)			0	0
7. Derivatives			0	0
8. Other invested assets			0	0
9. Receivables for securities			0	0
10. Securities lending reinvested collateral assets			0	0
11. Aggregate write-ins for invested assets	0	0	0	0
12. Subtotals, cash and invested assets (Lines 1 to 11)	3,019,329	0	3,019,329	3,019,564
13. Title plants less \$ charged off (for Title insurers only)			0	0
14. Investment income due and accrued	2,236		2,236	240
15. Premiums and considerations:				
15.1 Uncollected premiums and agents' balances in the course of collection			0	0
15.2 Deferred premiums, agents' balances and installments booked but deferred and not yet due (including \$ earned but unbilled premiums)			0	0
15.3 Accrued retrospective premiums (\$) and contracts subject to redetermination (\$)			0	0
16. Reinsurance:				
16.1 Amounts recoverable from reinsurers			0	0
16.2 Funds held by or deposited with reinsured companies			0	0
16.3 Other amounts receivable under reinsurance contracts			0	0
17. Amounts receivable relating to uninsured plans			0	0
18.1 Current federal and foreign income tax recoverable and interest thereon			0	0
18.2 Net deferred tax asset			0	0
19. Guaranty funds receivable or on deposit			0	0
20. Electronic data processing equipment and software			0	0
21. Furniture and equipment, including health care delivery assets (\$)			0	0
22. Net adjustment in assets and liabilities due to foreign exchange rates			0	0
23. Receivables from parent, subsidiaries and affiliates			0	0
24. Health care (\$) and other amounts receivable			0	0
25. Aggregate write-ins for other than invested assets	0	0	0	0
26. Total assets excluding Separate Accounts, Segregated Accounts and Protected Cell Accounts (Lines 12 to 25)	3,021,565	0	3,021,565	3,019,804
27. From Separate Accounts, Segregated Accounts and Protected Cell Accounts			0	0
28. Total (Lines 26 and 27)	3,021,565	0	3,021,565	3,019,804
DETAILS OF WRITE-INS				
1101.				
1102.				
1103.				
1198. Summary of remaining write-ins for Line 11 from overflow page	0	0	0	0
1199. Totals (Lines 1101 through 1103 plus 1198)(Line 11 above)	0	0	0	0
2501.				
2502.				
2503.				
2598. Summary of remaining write-ins for Line 25 from overflow page	0	0	0	0
2599. Totals (Lines 2501 through 2503 plus 2598)(Line 25 above)	0	0	0	0

LIABILITIES, CAPITAL AND SURPLUS

	Current Period			Prior Year
	1 Covered	2 Uncovered	3 Total	4 Total
1. Claims unpaid (less \$ reinsurance ceded)			0	0
2. Accrued medical incentive pool and bonus amounts			0	0
3. Unpaid claims adjustment expenses			0	0
4. Aggregate health policy reserves, including the liability of \$0 for medical loss ratio rebate per the Public Health Service Act			0	0
5. Aggregate life policy reserves			0	0
6. Property/casualty unearned premium reserve			0	0
7. Aggregate health claim reserves			0	0
8. Premiums received in advance			0	0
9. General expenses due or accrued			0	0
10.1 Current federal and foreign income tax payable and interest thereon (including \$ on realized gains (losses))	1,199		1,199	639
10.2 Net deferred tax liability			0	0
11. Ceded reinsurance premiums payable			0	0
12. Amounts withheld or retained for the account of others.....			0	0
13. Remittances and items not allocated			0	0
14. Borrowed money (including \$ current) and interest thereon \$ (including \$ current)			0	0
15. Amounts due to parent, subsidiaries and affiliates			0	0
16. Derivatives			0	0
17. Payable for securities			0	0
18. Payable for securities lending			0	0
19. Funds held under reinsurance treaties (with \$ authorized reinsurers, \$ unauthorized reinsurers and \$ certified reinsurers).....			0	0
20. Reinsurance in unauthorized and certified (\$) companies			0	0
21. Net adjustments in assets and liabilities due to foreign exchange rates			0	0
22. Liability for amounts held under uninsured plans			0	0
23. Aggregate write-ins for other liabilities (including \$ current)	0	0	0	0
24. Total liabilities (Lines 1 to 23)	1,199	0	1,199	639
25. Aggregate write-ins for special surplus funds	XXX	XXX	0	0
26. Common capital stock	XXX	XXX	100	100
27. Preferred capital stock	XXX	XXX		
28. Gross paid in and contributed surplus	XXX	XXX	3,014,900	3,014,900
29. Surplus notes	XXX	XXX		
30. Aggregate write-ins for other than special surplus funds	XXX	XXX	0	0
31. Unassigned funds (surplus)	XXX	XXX	5,366	4,165
32. Less treasury stock, at cost:				
32.1 shares common (value included in Line 26 \$)	XXX	XXX		
32.2 shares preferred (value included in Line 27 \$)	XXX	XXX		
33. Total capital and surplus (Lines 25 to 31 minus Line 32)	XXX	XXX	3,020,366	3,019,165
34. Total liabilities, capital and surplus (Lines 24 and 33)	XXX	XXX	3,021,565	3,019,804
DETAILS OF WRITE-INS				
2301.				
2302.				
2303.				
2398. Summary of remaining write-ins for Line 23 from overflow page	0	0	0	0
2399. Totals (Lines 2301 through 2303 plus 2398)(Line 23 above)	0	0	0	0
2501.	XXX	XXX		
2502.	XXX	XXX		
2503.	XXX	XXX		
2598. Summary of remaining write-ins for Line 25 from overflow page	XXX	XXX	0	0
2599. Totals (Lines 2501 through 2503 plus 2598)(Line 25 above)	XXX	XXX	0	0
3001.	XXX	XXX		
3002.	XXX	XXX		
3003.	XXX	XXX		
3098. Summary of remaining write-ins for Line 30 from overflow page	XXX	XXX	0	0
3099. Totals (Lines 3001 through 3003 plus 3098)(Line 30 above)	XXX	XXX	0	0

STATEMENT OF REVENUE AND EXPENSES

	Current Year To Date		Prior Year To Date	Prior Year Ended December 31
	1 Uncovered	2 Total	3 Total	4 Total
1. Member Months	XXX			
2. Net premium income (including \$ non-health premium income)	XXX			
3. Change in unearned premium reserves and reserve for rate credits	XXX			
4. Fee-for-service (net of \$ medical expenses)	XXX			
5. Risk revenue	XXX			
6. Aggregate write-ins for other health care related revenues	XXX	0	0	0
7. Aggregate write-ins for other non-health revenues	XXX	0	0	0
8. Total revenues (Lines 2 to 7)	XXX	0	0	0
Hospital and Medical:				
9. Hospital/medical benefits				
10. Other professional services				
11. Outside referrals				
12. Emergency room and out-of-area				
13. Prescription drugs				
14. Aggregate write-ins for other hospital and medical	0	0	0	0
15. Incentive pool, withhold adjustments and bonus amounts				
16. Subtotal (Lines 9 to 15)	0	0	0	0
Less:				
17. Net reinsurance recoveries				
18. Total hospital and medical (Lines 16 minus 17)	0	0	0	0
19. Non-health claims (net)				
20. Claims adjustment expenses, including \$ cost containment expenses				0
21. General administrative expenses		495		
22. Increase in reserves for life and accident and health contracts (including \$ increase in reserves for life only)				0
23. Total underwriting deductions (Lines 18 through 22)	0	495	0	0
24. Net underwriting gain or (loss) (Lines 8 minus 23)	XXX	(495)	0	0
25. Net investment income earned		2,015	1,831	4,184
26. Net realized capital gains (losses) less capital gains tax of \$				
27. Net investment gains (losses) (Lines 25 plus 26)	0	2,015	1,831	4,184
28. Net gain or (loss) from agents' or premium balances charged off [(amount recovered \$) (amount charged off \$)]				
29. Aggregate write-ins for other income or expenses	0	0	0	0
30. Net income or (loss) after capital gains tax and before all other federal income taxes (Lines 24 plus 27 plus 28 plus 29)	XXX	1,520	1,831	4,184
31. Federal and foreign income taxes incurred	XXX	319	385	879
32. Net income (loss) (Lines 30 minus 31)	XXX	1,201	1,446	3,305
DETAILS OF WRITE-INS				
0601.	XXX			
0602.	XXX			
0603.	XXX			
0698. Summary of remaining write-ins for Line 6 from overflow page	XXX	0	0	0
0699. Totals (Lines 0601 through 0603 plus 0698)(Line 6 above)	XXX	0	0	0
0701.	XXX			
0702.	XXX			
0703.	XXX			
0798. Summary of remaining write-ins for Line 7 from overflow page	XXX	0	0	0
0799. Totals (Lines 0701 through 0703 plus 0798)(Line 7 above)	XXX	0	0	0
1401.				
1402.				
1403.				
1498. Summary of remaining write-ins for Line 14 from overflow page	0	0	0	0
1499. Totals (Lines 1401 through 1403 plus 1498)(Line 14 above)	0	0	0	0
2901.				
2902.				
2903.				
2998. Summary of remaining write-ins for Line 29 from overflow page	0	0	0	0
2999. Totals (Lines 2901 through 2903 plus 2998)(Line 29 above)	0	0	0	0

STATEMENT OF REVENUE AND EXPENSES (Continued)

	1 Current Year to Date	2 Prior Year to Date	3 Prior Year Ended December 31
CAPITAL AND SURPLUS ACCOUNT			
33. Capital and surplus prior reporting year.....	3,019,165	3,015,860	3,015,860
34. Net income or (loss) from Line 32	1,201	1,446	3,305
35. Change in valuation basis of aggregate policy and claim reserves			
36. Change in net unrealized capital gains (losses) less capital gains tax of \$			
37. Change in net unrealized foreign exchange capital gain or (loss)			
38. Change in net deferred income tax			
39. Change in nonadmitted assets			0
40. Change in unauthorized and certified reinsurance	0	0	0
41. Change in treasury stock	0	0	0
42. Change in surplus notes	0	0	0
43. Cumulative effect of changes in accounting principles.....			
44. Capital Changes:			
44.1 Paid in			0
44.2 Transferred from surplus (Stock Dividend).....	0	0	0
44.3 Transferred to surplus.....			
45. Surplus adjustments:			
45.1 Paid in	0	0	0
45.2 Transferred to capital (Stock Dividend)			
45.3 Transferred from capital			
46. Dividends to stockholders			
47. Aggregate write-ins for gains or (losses) in surplus	0	0	0
48. Net change in capital & surplus (Lines 34 to 47)	1,201	1,446	3,305
49. Capital and surplus end of reporting period (Line 33 plus 48)	3,020,366	3,017,306	3,019,165
DETAILS OF WRITE-INS			
4701.			
4702.			
4703.			
4798. Summary of remaining write-ins for Line 47 from overflow page	0	0	0
4799. Totals (Lines 4701 through 4703 plus 4798)(Line 47 above)	0	0	0

STATEMENT AS OF JUNE 30, 2024 OF THE Molina Healthcare of Rhode Island, Inc.

CASH FLOW

	1 Current Year To Date	2 Prior Year To Date	3 Prior Year Ended December 31
Cash from Operations			
1. Premiums collected net of reinsurance	0	0	0
2. Net investment income	(837)	714	2,390
3. Miscellaneous income	0	0	0
4. Total (Lines 1 to 3)	(837)	714	2,390
5. Benefit and loss related payments	0	0	0
6. Net transfers to Separate Accounts, Segregated Accounts and Protected Cell Accounts			
7. Commissions, expenses paid and aggregate write-ins for deductions	495	0	0
8. Dividends paid to policyholders			
9. Federal and foreign income taxes paid (recovered) net of \$ tax on capital gains (losses)	(241)	0	469
10. Total (Lines 5 through 9)	254	0	469
11. Net cash from operations (Line 4 minus Line 10)	(1,091)	714	1,921
Cash from Investments			
12. Proceeds from investments sold, matured or repaid:			
12.1 Bonds	110,000	0	0
12.2 Stocks	0	0	0
12.3 Mortgage loans	0	0	0
12.4 Real estate	0	0	0
12.5 Other invested assets	0	0	0
12.6 Net gains or (losses) on cash, cash equivalents and short-term investments	0	0	0
12.7 Miscellaneous proceeds	0	0	0
12.8 Total investment proceeds (Lines 12.1 to 12.7)	110,000	0	0
13. Cost of investments acquired (long-term only):			
13.1 Bonds	122,947	0	0
13.2 Stocks	0	0	0
13.3 Mortgage loans	0	0	0
13.4 Real estate	0	0	0
13.5 Other invested assets	0	0	0
13.6 Miscellaneous applications	0	0	0
13.7 Total investments acquired (Lines 13.1 to 13.6)	122,947	0	0
14. Net increase (or decrease) in contract loans and premium notes	0	0	0
15. Net cash from investments (Line 12.8 minus Line 13.7 and Line 14)	(12,947)	0	0
Cash from Financing and Miscellaneous Sources			
16. Cash provided (applied):			
16.1 Surplus notes, capital notes	0	0	0
16.2 Capital and paid in surplus, less treasury stock	0	0	0
16.3 Borrowed funds	0	0	0
16.4 Net deposits on deposit-type contracts and other insurance liabilities	0	0	0
16.5 Dividends to stockholders	0	0	0
16.6 Other cash provided (applied)	0	0	0
17. Net cash from financing and miscellaneous sources (Line 16.1 through Line 16.4 minus Line 16.5 plus Line 16.6)	0	0	0
RECONCILIATION OF CASH, CASH EQUIVALENTS AND SHORT-TERM INVESTMENTS			
18. Net change in cash, cash equivalents and short-term investments (Line 11, plus Lines 15 and 17)	(14,038)	714	1,921
19. Cash, cash equivalents and short-term investments:			
19.1 Beginning of year	2,910,326	2,908,405	2,908,405
19.2 End of period (Line 18 plus Line 19.1)	2,896,288	2,909,119	2,910,326

Note: Supplemental disclosures of cash flow information for non-cash transactions:

--	--	--	--

Exhibit of Premiums, Enrollment and Utilization

N O N E

Claims Payable - Aging Analysis of Unpaid Claims

N O N E

Underwriting and Investment Exhibit

N O N E

NOTES TO FINANCIAL STATEMENTS

The interim financial information presented below has been prepared under the assumption that users of such interim financial information have either read or have access to the annual statement of Molina Healthcare of Rhode Island, Inc. (the Plan) for the fiscal year ended December 31, 2023. Accordingly, footnote disclosures that would substantially duplicate the disclosures contained in the December 31, 2023 annual statement have been omitted.

NOTE 1 Summary of Significant Accounting Policies and Going Concern

Organization and Operations

The Plan is a wholly owned subsidiary of Molina Healthcare, Inc. (Molina, or the Parent). The financial statements of the Plan are presented on the basis of accounting practices prescribed or permitted by the Rhode Island Insurance Division (the Division).

A. Accounting Practices

The Division recognizes only statutory accounting practices prescribed or permitted by the state of Rhode Island for determining and reporting the financial condition and results of operations of an insurance company, for determining its solvency under the Rhode Island insurance law. The National Association of Insurance Commissioners' Accounting Practices and Procedures Manual (NAIC SAP) has been adopted as a component of prescribed or permitted practices by the state of Rhode Island.

Such prescribed accounting practices have no significant effect on the Plan's statutory basis financial statements for the periods presented.

	SSAP #	F/S Page	F/S Line #	2024	2023
NET INCOME					
(1) State basis (Page 4, Line 32, Columns 2 & 4)	XXX	XXX	XXX	\$ 1,201	\$ 3,305
(2) State Prescribed Practices that are an increase/(decrease) from NAIC SAP:					
(3) State Permitted Practices that are an increase/(decrease) from NAIC SAP:					
(4) NAIC SAP (1-2-3=4)	XXX	XXX	XXX	\$ 1,201	\$ 3,305
SURPLUS					
(5) State basis (Page 3, Line 33, Columns 3 & 4)	XXX	XXX	XXX	\$ 3,020,366	\$ 3,019,165
(6) State Prescribed Practices that are an increase/(decrease) from NAIC SAP:					
(7) State Permitted Practices that are an increase/(decrease) from NAIC SAP:					
(8) NAIC SAP (5-6-7=8)	XXX	XXX	XXX	\$ 3,020,366	\$ 3,019,165

B. Use of Estimates in the Preparation of the Financial Statements: No significant change.

C. Accounting Policy

(1) - (5) No significant changes.

(6) Basis for Loan-Backed Securities and Adjustment Methodology: None.

(7) - (13) No significant changes.

D. Going Concern: The Plan is not aware of any relevant conditions or events that raise substantial doubt about its abilities to continue as a going concern.

NOTE 2 Accounting Changes and Corrections of Errors

None.

NOTE 3 Business Combinations and Goodwill

None.

NOTE 4 Discontinued Operations

None.

NOTE 5 Investments

A. - C. None.

D. Loan-Backed Securities: None.

E. Dollar Repurchase Agreements and/or Securities Lending Transactions: None.

F. Repurchase Agreements Transactions Accounted for as Secured Borrowing: None.

G. Reverse Repurchase Agreements Transactions Accounted for as Secured Borrowing: None.

H. Repurchase Agreements Transactions Accounted for as a Sale: None.

I. Reverse Repurchase Agreements Transactions Accounted for as a Sale: None.

J. - K. None.

L. Restricted Assets: No significant change.

M. Working Capital Finance Investments: None.

N. Offsetting and Netting of Assets and Liabilities: None.

O. - P. None.

Q. Prepayment Penalty and Acceleration Fees: None.

R. Reporting Entity's Share of Cash Pool by Asset Type: None.

NOTES TO FINANCIAL STATEMENTS

NOTE 6 Joint Ventures, Partnerships and Limited Liability Companies

None.

NOTE 7 Investment Income

No significant change.

NOTE 8 Derivative Instruments

None.

NOTE 9 Income Taxes

The Plan is included in the consolidated federal income tax return with its parent, Molina. The Plan does not expect to be liable for the Corporate Alternative Minimum Tax in 2024.

A. - I. No significant changes.

NOTE 10 Information Concerning Parent, Subsidiaries, Affiliates and Other Related Parties

A. No significant change.

B. The Plan neither paid dividends to, nor received contributions from Molina during the period ended June 30, 2024.

C. Transactions with related party who are not reported on Schedule Y: None.

D. - O. No significant changes.

NOTE 11 Debt

A. None.

B. Federal Home Loan Bank Agreements: None.

NOTE 12 Retirement Plans, Deferred Compensation, Postemployment Benefits and Compensated Absences and Other Postretirement Benefit Plans

A. - D. Defined Benefit Plan: None.

E. Defined Contribution Plan: See Note 12G.

F. Multiemployer Plans: None.

G. Consolidated/Holding Company Plans: None.

H. - I. None.

NOTE 13 Capital and Surplus, Dividend Restrictions and Quasi-Reorganizations

A. - C. No significant changes.

D. Refer to Note 10B.

E. - M. No significant changes.

NOTE 14 Liabilities, Contingencies and Assessments

No significant changes.

NOTE 15 Leases

No significant changes.

NOTE 16 Information About Financial Instruments With Off-Balance Sheet Risk and Financial Instruments With Concentrations of Credit Risk

None.

NOTE 17 Sale, Transfer and Servicing of Financial Assets and Extinguishments of Liabilities

A. Transfers of Receivables Reported as Sales: None.

B. Transfer and Servicing of Financial Assets: None.

C. Wash Sales: None.

NOTE 18 Gain or Loss to the Reporting Entity from Uninsured Plans and the Uninsured Portion of Partially Insured Plans

A. - C. None.

NOTE 19 Direct Premium Written/Produced by Managing General Agents/Third Party Administrators

None.

NOTE 20 Fair Value Measurements

A. Fair Value Measurements

(1) Fair Value Measurements at Reporting Date: The Plan's assets measured and reported at fair value on a recurring basis are listed in the table below. The Plan receives monthly statements from investment brokers that provide market pricing. There were no transfers between Level 1 and Level 2 of the fair value hierarchy.

Description for each class of asset	(Level 1)	(Level 2)	(Level 3)	Net Asset Value (NAV)	Total
a. Assets at fair value					

NOTES TO FINANCIAL STATEMENTS

Other money market mutual funds	\$	4,805	\$	-	\$	-	\$	-	\$	4,805
Total assets at fair value/NAV	\$	4,805	\$	-	\$	-	\$	-	\$	4,805

(2) Fair Value Measurements in Level 3 of the Fair Value hierarchy: None.

(3) Policy for determining when transfers between levels are recognized: The actual date of the event or change in circumstances that caused the transfer.

(4) Description of Valuation Techniques and Inputs Used in Fair Value Measurement: None.

(5) Derivative Assets and Liabilities: None.

B. Fair Value Reporting under Statement of Statutory Accounting Principles No. 100, Fair Value Measurements, and Other Accounting Pronouncements: In addition to the financial instruments listed below, the Plan's statutory basis balance sheets typically include the following financial instruments: investment income due and accrued, federal income tax recoverable (payable), receivables, and current liabilities. The Plan believes the carrying amounts of these financial instruments approximate the fair value of these financial instruments because of the relatively short period of time between the origination of the instruments and their expected realization or payment.

C. Aggregate Fair Value Hierarchy

The aggregate fair value hierarchy of all financial instruments as of March 30, 2024 is presented in the table below:

Type of Financial Instrument	Aggregate Fair Value	Admitted Assets	(Level 1)	(Level 2)	(Level 3)	Net Asset Value (NAV)	Not Practicable (Carrying Value)
Open depositories	\$ 2,891,483	\$ 2,891,483	\$ 2,891,483	\$ -	\$ -	\$ -	\$ -
Other money market mutual funds	\$ 4,805	\$ 4,805	\$ 4,805	\$ -	\$ -	\$ -	\$ -
U.S. Governments	\$ 123,125	\$ 123,041	\$ -	\$ 123,125	\$ -	\$ -	\$ -
Total financial instruments	\$ 3,019,413	\$ 3,019,329	\$ 2,896,288	\$ 123,125	\$ -	\$ -	\$ -

D. - E. None.

NOTE 21 Other Items

A. - B. No significant changes.

C. Other Disclosures: None.

D. - I. No significant changes.

NOTE 22 Events Subsequent

Subsequent events were considered through August 9, 2024, the date the statutory financial statements were available to be issued.

NOTE 23 Reinsurance

A. - E. No significant changes.

NOTE 24 Retrospectively Rated Contracts & Contracts Subject to Redetermination

A. - D. No significant changes.

E. Risk Sharing Provisions of the Affordable Care Act

(1) Did the reporting entity write accident and health insurance premium which is subject to the Affordable Care Act risk sharing provisions (YES/NO)?

Yes [] No [X]

(2) Impact of Risk Sharing Provisions of the Affordable Care Act on Admitted Assets, Liabilities and Revenue for the Current Year: None.

(3) Roll forward of prior year ACA risk sharing provisions for the following asset (gross of any nonadmission) and liability balances along with the reasons for adjustments to prior year balance: None.

(4) Roll-Forward of Risk Corridors Asset and Liability Balances by Program Benefit Year: None.

(5) ACA Risk Corridors Receivable as of Reporting Date: None.

NOTE 25 Change in Incurred Claims and Claim Adjustment Expenses

A - B. None.

NOTE 26 Intercompany Pooling Arrangements

None.

NOTE 27 Structured Settlements

None.

NOTE 28 Health Care Receivables

None.

NOTE 29 Participating Policies

None.

NOTE 30 Premium Deficiency Reserves

None.

NOTES TO FINANCIAL STATEMENTS

NOTE 31 Anticipated Salvage and Subrogation

None.

GENERAL INTERROGATORIES

PART 1 - COMMON INTERROGATORIES

GENERAL

- 1.1 Did the reporting entity experience any material transactions requiring the filing of Disclosure of Material Transactions with the State of Domicile, as required by the Model Act? Yes [] No [X]
- 1.2 If yes, has the report been filed with the domiciliary state? Yes [] No []
- 2.1 Has any change been made during the year of this statement in the charter, by-laws, articles of incorporation, or deed of settlement of the reporting entity? Yes [] No [X]
- 2.2 If yes, date of change:
- 3.1 Is the reporting entity a member of an Insurance Holding Company System consisting of two or more affiliated persons, one or more of which is an insurer? Yes [X] No []
If yes, complete Schedule Y, Parts 1 and 1A.
- 3.2 Have there been any substantial changes in the organizational chart since the prior quarter end? Yes [X] No []
- 3.3 If the response to 3.2 is yes, provide a brief description of those changes.
Molina Healthcare of Wisconsin CMO, Inc. has been removed from the organizational chart.
- 3.4 Is the reporting entity publicly traded or a member of a publicly traded group? Yes [X] No []
- 3.5 If the response to 3.4 is yes, provide the CIK (Central Index Key) code issued by the SEC for the entity/group. 1179929
- 4.1 Has the reporting entity been a party to a merger or consolidation during the period covered by this statement? Yes [] No [X]
- 4.2 If yes, provide the name of the entity, NAIC Company Code, and state of domicile (use two letter state abbreviation) for any entity that has ceased to exist as a result of the merger or consolidation.

1	2	3
Name of Entity	NAIC Company Code	State of Domicile

5. If the reporting entity is subject to a management agreement, including third-party administrator(s), managing general agent(s), attorney-in-fact, or similar agreement, have there been any significant changes regarding the terms of the agreement or principals involved? Yes [] No [X] N/A []
If yes, attach an explanation.
.....
- 6.1 State as of what date the latest financial examination of the reporting entity was made or is being made.
- 6.2 State the as of date that the latest financial examination report became available from either the state of domicile or the reporting entity. This date should be the date of the examined balance sheet and not the date the report was completed or released.
- 6.3 State as of what date the latest financial examination report became available to other states or the public from either the state of domicile or the reporting entity. This is the release date or completion date of the examination report and not the date of the examination (balance sheet date).
- 6.4 By what department or departments?
.....
- 6.5 Have all financial statement adjustments within the latest financial examination report been accounted for in a subsequent financial statement filed with Departments? Yes [] No [] N/A [X]
- 6.6 Have all of the recommendations within the latest financial examination report been complied with? Yes [] No [] N/A [X]
- 7.1 Has this reporting entity had any Certificates of Authority, licenses or registrations (including corporate registration, if applicable) suspended or revoked by any governmental entity during the reporting period? Yes [] No [X]
- 7.2 If yes, give full information:
.....
- 8.1 Is the company a subsidiary of a bank holding company regulated by the Federal Reserve Board? Yes [] No [X]
- 8.2 If response to 8.1 is yes, please identify the name of the bank holding company.
.....
- 8.3 Is the company affiliated with one or more banks, thrifts or securities firms? Yes [] No [X]
- 8.4 If response to 8.3 is yes, please provide below the names and location (city and state of the main office) of any affiliates regulated by a federal regulatory services agency [i.e. the Federal Reserve Board (FRB), the Office of the Comptroller of the Currency (OCC), the Federal Deposit Insurance Corporation (FDIC) and the Securities Exchange Commission (SEC)] and identify the affiliate's primary federal regulator.

1	2	3	4	5	6
Affiliate Name	Location (City, State)	FRB	OCC	FDIC	SEC

GENERAL INTERROGATORIES

- 9.1 Are the senior officers (principal executive officer, principal financial officer, principal accounting officer or controller, or persons performing similar functions) of the reporting entity subject to a code of ethics, which includes the following standards? Yes [] No []
- (a) Honest and ethical conduct, including the ethical handling of actual or apparent conflicts of interest between personal and professional relationships;
- (b) Full, fair, accurate, timely and understandable disclosure in the periodic reports required to be filed by the reporting entity;
- (c) Compliance with applicable governmental laws, rules and regulations;
- (d) The prompt internal reporting of violations to an appropriate person or persons identified in the code; and
- (e) Accountability for adherence to the code.

9.11 If the response to 9.1 is No, please explain:

.....

9.2 Has the code of ethics for senior managers been amended? Yes [] No []

9.21 If the response to 9.2 is Yes, provide information related to amendment(s).

On January 24, 2024, Molina Healthcare, Inc. ("Molina") amended its Code of Business Conduct and Ethics (the "Code") to include a description of Molina's mandatory training process for employees on topics including but not limited to the Code, Molina's Compliance Program and its policies and procedures, and fraud, waste, and abuse. The amendments clarify that employees who fail to complete their required trainings on time may be subject to disciplinary action, up to and including termination.

In addition, Molina made certain other changes to the Code, including those of a technical, administrative and non-substantive nature.

9.3 Have any provisions of the code of ethics been waived for any of the specified officers? Yes [] No []

9.31 If the response to 9.3 is Yes, provide the nature of any waiver(s).

.....

FINANCIAL

10.1 Does the reporting entity report any amounts due from parent, subsidiaries or affiliates on Page 2 of this statement? Yes [] No []

10.2 If yes, indicate any amounts receivable from parent included in the Page 2 amount: \$

INVESTMENT

11.1 Were any of the stocks, bonds, or other assets of the reporting entity loaned, placed under option agreement, or otherwise made available for use by another person? (Exclude securities under securities lending agreements.) Yes [] No []

11.2 If yes, give full and complete information relating thereto:

.....

12. Amount of real estate and mortgages held in other invested assets in Schedule BA: \$

13. Amount of real estate and mortgages held in short-term investments: \$

14.1 Does the reporting entity have any investments in parent, subsidiaries and affiliates? Yes [] No []

14.2 If yes, please complete the following:

	1 Prior Year-End Book/Adjusted Carrying Value	2 Current Quarter Book/Adjusted Carrying Value
14.21 Bonds	\$0	\$
14.22 Preferred Stock	\$0	\$
14.23 Common Stock	\$0	\$
14.24 Short-Term Investments	\$0	\$
14.25 Mortgage Loans on Real Estate	\$0	\$
14.26 All Other	\$0	\$
14.27 Total Investment in Parent, Subsidiaries and Affiliates (Subtotal Lines 14.21 to 14.26)	\$0	\$0
14.28 Total Investment in Parent included in Lines 14.21 to 14.26 above	\$	\$

15.1 Has the reporting entity entered into any hedging transactions reported on Schedule DB? Yes [] No []

15.2 If yes, has a comprehensive description of the hedging program been made available to the domiciliary state? Yes [] No [] N/A []
If no, attach a description with this statement.

.....

16. For the reporting entity's security lending program, state the amount of the following as of the current statement date:

16.1 Total fair value of reinvested collateral assets reported on Schedule DL, Parts 1 and 2	\$	0
16.2 Total book/adjusted carrying value of reinvested collateral assets reported on Schedule DL, Parts 1 and 2	\$	0
16.3 Total payable for securities lending reported on the liability page	\$	0

GENERAL INTERROGATORIES

17. Excluding items in Schedule E - Part 3 - Special Deposits, real estate, mortgage loans and investments held physically in the reporting entity's offices, vaults or safety deposit boxes, were all stocks, bonds and other securities, owned throughout the current year held pursuant to a custodial agreement with a qualified bank or trust company in accordance with Section 1, III - General Examination Considerations, F. Outsourcing of Critical Functions, Custodial or Safekeeping Agreements of the NAIC Financial Condition Examiners Handbook? Yes [] No []
- 17.1 For all agreements that comply with the requirements of the NAIC Financial Condition Examiners Handbook, complete the following:

1 Name of Custodian(s)	2 Custodian Address
The Washington Trust Company	20 Point Judith Road, Narragansett, RI 02882

- 17.2 For all agreements that do not comply with the requirements of the NAIC Financial Condition Examiners Handbook, provide the name, location and a complete explanation:

1 Name(s)	2 Location(s)	3 Complete Explanation(s)

- 17.3 Have there been any changes, including name changes, in the custodian(s) identified in 17.1 during the current quarter? Yes [] No []

- 17.4 If yes, give full information relating thereto:

1 Old Custodian	2 New Custodian	3 Date of Change	4 Reason

- 17.5 Investment management – Identify all investment advisors, investment managers, broker/dealers, including individuals that have the authority to make investment decisions on behalf of the reporting entity. For assets that are managed internally by employees of the reporting entity, note as such. ["...that have access to the investment accounts"; "...handle securities"]

1 Name of Firm or Individual	2 Affiliation
Molina Healthcare, Inc.	A.....

- 17.5097 For those firms/individuals listed in the table for Question 17.5, do any firms/individuals unaffiliated with the reporting entity (i.e. designated with a "U") manage more than 10% of the reporting entity's invested assets?..... Yes [] No []

- 17.5098 For firms/individuals unaffiliated with the reporting entity (i.e. designated with a "U") listed in the table for Question 17.5, does the total assets under management aggregate to more than 50% of the reporting entity's invested assets?..... Yes [] No []

- 17.6 For those firms or individuals listed in the table for 17.5 with an affiliation code of "A" (affiliated) or "U" (unaffiliated), provide the information for the table below.

1	2	3	4	5
Central Registration Depository Number	Name of Firm or Individual	Legal Entity Identifier (LEI)	Registered With	Investment Management Agreement (IMA) Filed
	Molina Healthcare, Inc.			NO.....

- 18.1 Have all the filing requirements of the Purposes and Procedures Manual of the NAIC Investment Analysis Office been followed? Yes [] No []

- 18.2 If no, list exceptions:

.....

19. By self-designating 5GI securities, the reporting entity is certifying the following elements for each self-designated 5GI security:
- a. Documentation necessary to permit a full credit analysis of the security does not exist or an NAIC CRP credit rating for an FE or PL security is not available.
 - b. Issuer or obligor is current on all contracted interest and principal payments.
 - c. The insurer has an actual expectation of ultimate payment of all contracted interest and principal.
- Has the reporting entity self-designated 5GI securities? Yes [] No []

20. By self-designating PLGI securities, the reporting entity is certifying the following elements of each self-designated PLGI security:
- a. The security was purchased prior to January 1, 2018.
 - b. The reporting entity is holding capital commensurate with the NAIC Designation reported for the security.
 - c. The NAIC Designation was derived from the credit rating assigned by an NAIC CRP in its legal capacity as a NRSRO which is shown on a current private letter rating held by the insurer and available for examination by state insurance regulators.
 - d. The reporting entity is not permitted to share this credit rating of the PL security with the SVO.
- Has the reporting entity self-designated PLGI securities? Yes [] No []

21. By assigning FE to a Schedule BA non-registered private fund, the reporting entity is certifying the following elements of each self-designated FE fund:
- a. The shares were purchased prior to January 1, 2019.
 - b. The reporting entity is holding capital commensurate with the NAIC Designation reported for the security.
 - c. The security had a public credit rating(s) with annual surveillance assigned by an NAIC CRP in its legal capacity as an NRSRO prior to January 1, 2019.
 - d. The fund only or predominantly holds bonds in its portfolio.
 - e. The current reported NAIC Designation was derived from the public credit rating(s) with annual surveillance assigned by an NAIC CRP in its legal capacity as an NRSRO.
 - f. The public credit rating(s) with annual surveillance assigned by an NAIC CRP has not lapsed.
- Has the reporting entity assigned FE to Schedule BA non-registered private funds that complied with the above criteria? Yes [] No []

GENERAL INTERROGATORIES

PART 2 - HEALTH

- 1. Operating Percentages:
 - 1.1 A&H loss percent %
 - 1.2 A&H cost containment percent %
 - 1.3 A&H expense percent excluding cost containment expenses %
- 2.1 Do you act as a custodian for health savings accounts? Yes [] No [X]
- 2.2 If yes, please provide the amount of custodial funds held as of the reporting date \$.....
- 2.3 Do you act as an administrator for health savings accounts? Yes [] No [X]
- 2.4 If yes, please provide the balance of the funds administered as of the reporting date \$.....
- 3. Is the reporting entity licensed or chartered, registered, qualified, eligible or writing business in at least two states? Yes [] No [X]
- 3.1 If no, does the reporting entity assume reinsurance business that covers risks residing in at least one state other than the state of domicile of the reporting entity? Yes [] No [X]

SCHEDULE S - CEDED REINSURANCE

Showing All New Reinsurance Treaties - Current Year to Date

1 NAIC Company Code	2 ID Number	3 Effective Date	4 Name of Reinsurer	5 Domiciliary Jurisdiction	6 Type of Reinsurance Ceded	7 Type of Business Ceded	8 Type of Reinsurer	9 Certified Reinsurer Rating (1 through 6)	10 Effective Date of Certified Reinsurer Rating
NONE									

SCHEDULE T - PREMIUMS AND OTHER CONSIDERATIONS

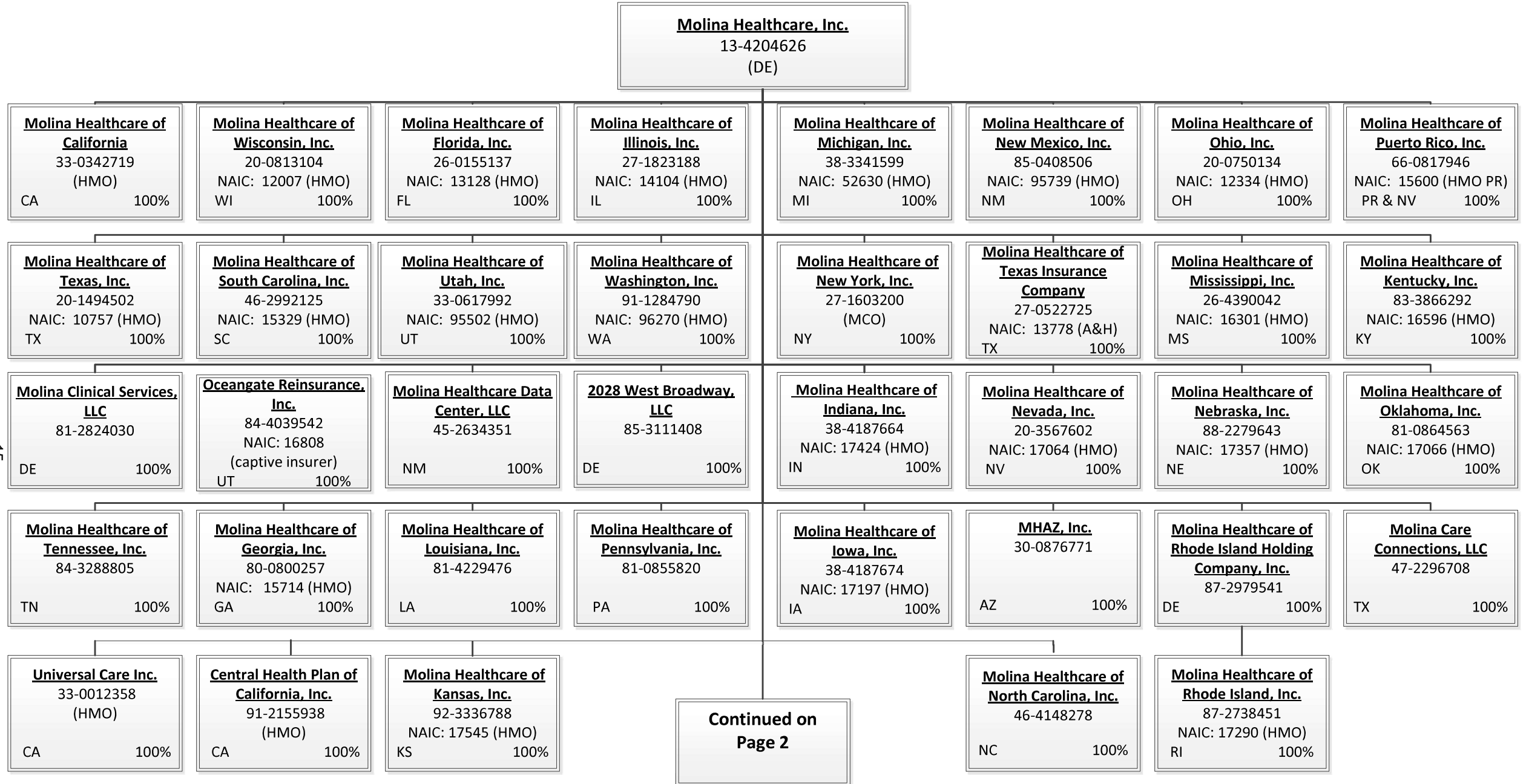
Current Year to Date - Allocated by States and Territories

States, etc.	1 Active Status (a)	Direct Business Only									
		2 Accident and Health Premiums	3 Medicare Title XVIII	4 Medicaid Title XIX	5 CHIP Title XXI	6 Federal Employees Health Benefits Program Premiums	7 Life and Annuity Premiums & Other Considerations	8 Property/Casualty Premiums	9 Total Columns 2 Through 8	10 Deposit-Type Contracts	
1. Alabama	AL	N								0	
2. Alaska	AK	N								0	
3. Arizona	AZ	N								0	
4. Arkansas	AR	N								0	
5. California	CA	N								0	
6. Colorado	CO	N								0	
7. Connecticut	CT	N								0	
8. Delaware	DE	N								0	
9. District of Columbia	DC	N								0	
10. Florida	FL	N								0	
11. Georgia	GA	N								0	
12. Hawaii	HI	N								0	
13. Idaho	ID	N								0	
14. Illinois	IL	N								0	
15. Indiana	IN	N								0	
16. Iowa	IA	N								0	
17. Kansas	KS	N								0	
18. Kentucky	KY	N								0	
19. Louisiana	LA	N								0	
20. Maine	ME	N								0	
21. Maryland	MD	N								0	
22. Massachusetts	MA	N								0	
23. Michigan	MI	N								0	
24. Minnesota	MN	N								0	
25. Mississippi	MS	N								0	
26. Missouri	MO	N								0	
27. Montana	MT	N								0	
28. Nebraska	NE	N								0	
29. Nevada	NV	N								0	
30. New Hampshire	NH	N								0	
31. New Jersey	NJ	N								0	
32. New Mexico	NM	N								0	
33. New York	NY	N								0	
34. North Carolina	NC	N								0	
35. North Dakota	ND	N								0	
36. Ohio	OH	N								0	
37. Oklahoma	OK	N								0	
38. Oregon	OR	N								0	
39. Pennsylvania	PA	N								0	
40. Rhode Island	RI	L								0	
41. South Carolina	SC	N								0	
42. South Dakota	SD	N								0	
43. Tennessee	TN	N								0	
44. Texas	TX	N								0	
45. Utah	UT	N								0	
46. Vermont	VT	N								0	
47. Virginia	VA	N								0	
48. Washington	WA	N								0	
49. West Virginia	WV	N								0	
50. Wisconsin	WI	N								0	
51. Wyoming	WY	N								0	
52. American Samoa	AS	N								0	
53. Guam	GU	N								0	
54. Puerto Rico	PR	N								0	
55. U.S. Virgin Islands	VI	N								0	
56. Northern Mariana Islands	MP	N								0	
57. Canada	CAN	N								0	
58. Aggregate Other Aliens	OT	XXX	0	0	0	0	0	0	0	0	0
59. Subtotal	XXX	0	0	0	0	0	0	0	0	0	0
60. Reporting Entity Contributions for Employee Benefit Plans	XXX									0	
61. Totals (Direct Business)	XXX	0	0	0	0	0	0	0	0	0	0
DETAILS OF WRITE-INS											
58001.	XXX										
58002.	XXX										
58003.	XXX										
58998. Summary of remaining write-ins for Line 58 from overflow page	XXX	0	0	0	0	0	0	0	0	0	0
58999. Totals (Lines 58001 through 58003 plus 58998)(Line 58 above)	XXX	0	0	0	0	0	0	0	0	0	0

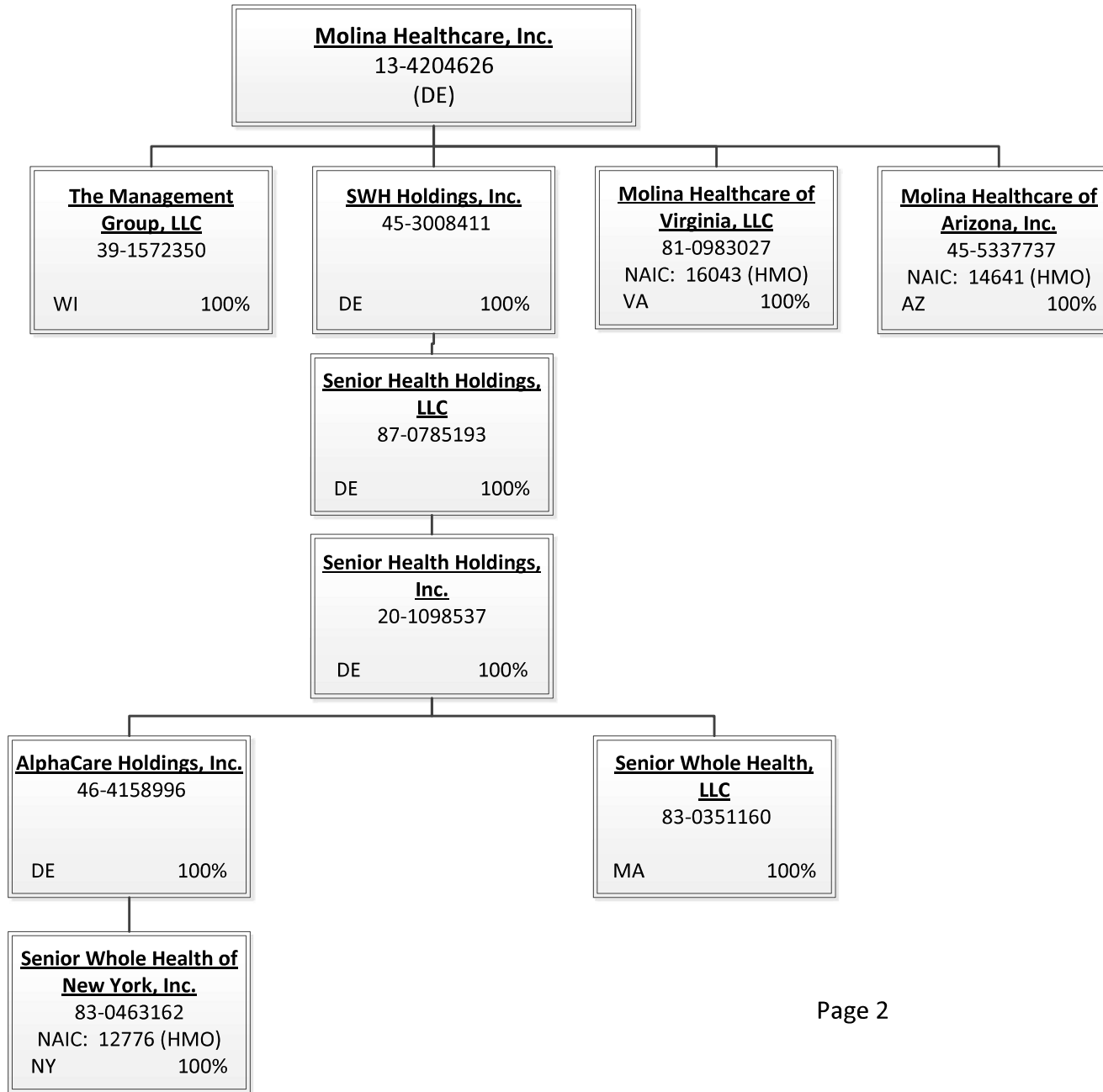
(a) Active Status Counts:

- 1. L - Licensed or Chartered - Licensed insurance carrier or domiciled RRG..... 1
- 2. R - Registered - Non-domiciled RRGs..... 0
- 3. E - Eligible - Reporting entities eligible or approved to write surplus lines in the state. 0
- 4. Q - Qualified - Qualified or accredited reinsurer..... 0
- 5. N - None of the above - Not allowed to write business in the state..... 56

STATEMENT AS OF JUNE 30, 2024 OF THE Molina Healthcare of Rhode Island, Inc.



15



15.1

STATEMENT AS OF JUNE 30, 2024 OF THE Molina Healthcare of Rhode Island, Inc.

SCHEDULE Y
PART 1A - DETAIL OF INSURANCE HOLDING COMPANY SYSTEM

1	2	3	4	5	6	7	8	9	10	11	12	13	14	15	16
Group Code	Group Name	NAIC Company Code	ID Number	Federal RSSD	CIK	Name of Securities Exchange if Publicly Traded (U.S. or International)	Names of Parent, Subsidiaries Or Affiliates	Domiciliary Location	Relationship to Reporting Entity	Directly Controlled by (Name of Entity/Person)	Type of Control (Ownership, Board, Management, Attorney-in-Fact, Influence, Other)	If Control is Ownership Provide Percentage	Ultimate Controlling Entity(ies)/Person(s)	Is an SCA Filing Required? (Yes/No)	*
		00000	13-4204626		1179929	New York Stock Exchange	Molina Healthcare, Inc.	DE	UDP	Molina Healthcare, Inc.	Ownership	100.000	Molina Healthcare, Inc.	NO	
1531	Molina Healthcare, Inc.	14641	45-5337737				Molina Healthcare of Arizona, Inc.	AZ	IA	Molina Healthcare, Inc.	Ownership	100.000	Molina Healthcare, Inc.	NO	
1531	Molina Healthcare, Inc.	13128	26-0155137				Molina Healthcare of Florida, Inc.	FL	IA	Molina Healthcare, Inc.	Ownership	100.000	Molina Healthcare, Inc.	NO	
1531	Molina Healthcare, Inc.	15714	80-0800257				Molina Healthcare of Georgia, Inc.	GA	IA	Molina Healthcare, Inc.	Ownership	100.000	Molina Healthcare, Inc.	NO	
1531	Molina Healthcare, Inc.	14104	27-1823188				Molina Healthcare of Illinois, Inc.	IL	IA	Molina Healthcare, Inc.	Ownership	100.000	Molina Healthcare, Inc.	NO	
1531	Molina Healthcare, Inc.	17424	38-4187664				Molina Healthcare of Indiana, Inc.	IN	IA	Molina Healthcare, Inc.	Ownership	100.000	Molina Healthcare, Inc.	NO	
1531	Molina Healthcare, Inc.	17197	38-4187674				Molina Healthcare of Iowa, Inc.	IA	IA	Molina Healthcare, Inc.	Ownership	100.000	Molina Healthcare, Inc.	NO	
1531	Molina Healthcare, Inc.	17545	92-3336788				Molina Healthcare of Kansas, Inc.	KS	IA	Molina Healthcare, Inc.	Ownership	100.000	Molina Healthcare, Inc.	NO	
1531	Molina Healthcare, Inc.	16596	83-3866292				Molina Healthcare of Kentucky, Inc.	KY	IA	Molina Healthcare, Inc.	Ownership	100.000	Molina Healthcare, Inc.	NO	
1531	Molina Healthcare, Inc.	52630	38-3341599				Molina Healthcare of Michigan, Inc.	MI	IA	Molina Healthcare, Inc.	Ownership	100.000	Molina Healthcare, Inc.	NO	
1531	Molina Healthcare, Inc.	16301	26-4390042				Molina Healthcare of Mississippi, Inc.	MS	IA	Molina Healthcare, Inc.	Ownership	100.000	Molina Healthcare, Inc.	NO	
1531	Molina Healthcare, Inc.	17357	88-2279643				Molina Healthcare of Nebraska, Inc.	NE	IA	Molina Healthcare, Inc.	Ownership	100.000	Molina Healthcare, Inc.	NO	
1531	Molina Healthcare, Inc.	17064	20-3567602				Molina Healthcare of Nevada, Inc.	NV	IA	Molina Healthcare, Inc.	Ownership	100.000	Molina Healthcare, Inc.	NO	
1531	Molina Healthcare, Inc.	95739	85-0408506				Molina Healthcare of New Mexico, Inc.	NM	IA	Molina Healthcare, Inc.	Ownership	100.000	Molina Healthcare, Inc.	NO	
1531	Molina Healthcare, Inc.	12334	20-0750134				Molina Healthcare of Ohio, Inc.	OH	IA	Molina Healthcare, Inc.	Ownership	100.000	Molina Healthcare, Inc.	NO	
1531	Molina Healthcare, Inc.	17066	81-0864563				Molina Healthcare of Oklahoma, Inc.	OK	IA	Molina Healthcare, Inc.	Ownership	100.000	Molina Healthcare, Inc.	NO	
1531	Molina Healthcare, Inc.	15600	66-0817946				Molina Healthcare of Puerto Rico, Inc.	PR	IA	Molina Healthcare, Inc.	Ownership	100.000	Molina Healthcare, Inc.	NO	
1531	Molina Healthcare, Inc.	17290	87-2738451				Molina Healthcare of Rhode Island, Inc.	RI	RE	Molina Healthcare of Rhode Island Holding Company, Inc.	Ownership	100.000	Molina Healthcare, Inc.	NO	
1531	Molina Healthcare, Inc.	15329	46-2992125				Molina Healthcare of South Carolina, Inc.	SC	IA	Molina Healthcare, Inc.	Ownership	100.000	Molina Healthcare, Inc.	NO	
1531	Molina Healthcare, Inc.	13778	27-0522725				Molina Healthcare of Texas Insurance Company	TX	IA	Molina Healthcare, Inc.	Ownership	100.000	Molina Healthcare, Inc.	NO	
1531	Molina Healthcare, Inc.	10757	20-1494502				Molina Healthcare of Texas, Inc.	TX	IA	Molina Healthcare, Inc.	Ownership	100.000	Molina Healthcare, Inc.	NO	
1531	Molina Healthcare, Inc.	95502	33-0617992				Molina Healthcare of Utah, Inc.	UT	IA	Molina Healthcare, Inc.	Ownership	100.000	Molina Healthcare, Inc.	NO	
1531	Molina Healthcare, Inc.	16043	81-0983027				Molina Healthcare of Virginia, LLC	VA	IA	Molina Healthcare, Inc.	Ownership	100.000	Molina Healthcare, Inc.	NO	
1531	Molina Healthcare, Inc.	96270	91-1284790				Molina Healthcare of Washington, Inc.	WA	IA	Molina Healthcare, Inc.	Ownership	100.000	Molina Healthcare, Inc.	NO	
1531	Molina Healthcare, Inc.	12007	20-0813104				Molina Healthcare of Wisconsin, Inc.	WI	IA	Molina Healthcare, Inc.	Ownership	100.000	Molina Healthcare, Inc.	NO	
1531	Molina Healthcare, Inc.	16808	84-4039542				Oceangate Reinsurance, Inc.	UT	IA	Molina Healthcare, Inc.	Ownership	100.000	Molina Healthcare, Inc.	NO	
1531	Molina Healthcare, Inc.	12776	83-0463162				Senior Whole Health of New York, Inc.	NY	IA	AlphaCare Holdings, Inc.	Ownership	100.000	Molina Healthcare, Inc.	NO	
		00000	85-3111408				2028 West Broadway, LLC	DE	NIA	Molina Healthcare, Inc.	Ownership	100.000	Molina Healthcare, Inc.	NO	
		00000	46-4158996				AlphaCare Holdings, Inc.	DE	NIA	Senior Health Holdings, Inc.	Ownership	100.000	Molina Healthcare, Inc.	NO	
		00000	91-2155938				Central Health Plan of California, Inc.	CA	IA	Molina Healthcare, Inc.	Ownership	100.000	Molina Healthcare, Inc.	NO	
		00000	30-0876771				MHAZ, Inc.	AZ	NIA	Molina Healthcare, Inc.	Ownership	100.000	Molina Healthcare, Inc.	NO	
		00000	47-2296708				Molina Care Connections, LLC	TX	NIA	Molina Healthcare, Inc.	Ownership	100.000	Molina Healthcare, Inc.	NO	
		00000	81-2824030				Molina Clinical Services, LLC	DE	NIA	Molina Healthcare, Inc.	Ownership	100.000	Molina Healthcare, Inc.	NO	
		00000	45-2634351				Molina Healthcare Data Center, LLC	NM	NIA	Molina Healthcare, Inc.	Ownership	100.000	Molina Healthcare, Inc.	NO	
		00000	33-0342719				Molina Healthcare of California	CA	IA	Molina Healthcare, Inc.	Ownership	100.000	Molina Healthcare, Inc.	NO	
		00000	81-4229476				Molina Healthcare of Louisiana, Inc.	LA	NIA	Molina Healthcare, Inc.	Ownership	100.000	Molina Healthcare, Inc.	NO	
		00000	27-1603200				Molina Healthcare of New York, Inc.	NY	IA	Molina Healthcare, Inc.	Ownership	100.000	Molina Healthcare, Inc.	NO	
		00000	46-4148278				Molina Healthcare of North Carolina, Inc.	NC	NIA	Molina Healthcare, Inc.	Ownership	100.000	Molina Healthcare, Inc.	NO	
		00000	81-0855820				Molina Healthcare of Pennsylvania, Inc.	PA	NIA	Molina Healthcare, Inc.	Ownership	100.000	Molina Healthcare, Inc.	NO	
		00000	87-2979541				Molina Healthcare of Rhode Island Holding Company, Inc.	DE	NIA	Molina Healthcare, Inc.	Ownership	100.000	Molina Healthcare, Inc.	NO	
		00000	84-3288805				Molina Healthcare of Tennessee, Inc.	TN	NIA	Molina Healthcare, Inc.	Ownership	100.000	Molina Healthcare, Inc.	NO	
		00000	20-1098537				Senior Health Holdings, Inc.	DE	NIA	Senior Health Holdings, LLC	Ownership	100.000	Molina Healthcare, Inc.	NO	
		00000	87-0785193				Senior Health Holdings, LLC	DE	NIA	SIH Holdings, Inc.	Ownership	100.000	Molina Healthcare, Inc.	NO	
		00000	83-0351160				Senior Whole Health, LLC	MA	NIA	Senior Health Holdings, Inc.	Ownership	100.000	Molina Healthcare, Inc.	NO	
		00000	45-3008411				SIH Holdings, Inc.	DE	NIA	Molina Healthcare, Inc.	Ownership	100.000	Molina Healthcare, Inc.	NO	
		00000	39-1572350				The Management Group, LLC	WI	NIA	Molina Healthcare, Inc.	Ownership	100.000	Molina Healthcare, Inc.	NO	

SCHEDULE Y
PART 1A - DETAIL OF INSURANCE HOLDING COMPANY SYSTEM

1	2	3	4	5	6	7	8	9	10	11	12	13	14	15	16
Group Code	Group Name	NAIC Company Code	ID Number	Federal RSSD	CIK	Name of Securities Exchange if Publicly Traded (U.S. or International)	Names of Parent, Subsidiaries Or Affiliates	Domiciliary Location	Relationship to Reporting Entity	Directly Controlled by (Name of Entity/Person)	Type of Control (Ownership, Board, Management, Attorney-in-Fact, Influence, Other)	If Control is Ownership Provide Percentage	Ultimate Controlling Entity(ies)/Person(s)	Is an SCA Filing Required? (Yes/No)	*
..... 00000	33-0012358	Universal Care, Inc. CA..... IA.....	Molina Healthcare, Inc.	Ownership.....	100.000 ...	Molina Healthcare, Inc. NO.....

Asterisk	Explanation

SUPPLEMENTAL EXHIBITS AND SCHEDULES INTERROGATORIES

The following supplemental reports are required to be filed as part of your statement filing. However, in the event that your company does not transact the type of business for which the special report must be filed, your response of NO to the specific interrogatory will be accepted in lieu of filing a "NONE" report and a bar code will be printed below. If the supplement is required of your company but is not being filed for whatever reason enter SEE EXPLANATION and provide an explanation following the interrogatory questions.

	Response
1. Will the Medicare Part D Coverage Supplement be filed with the state of domicile and the NAIC with this statement?	NO

AUGUST FILING

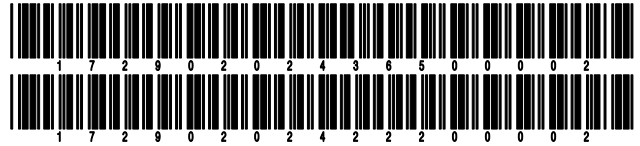
2. Will the regulator-only (non-public) Communication of Internal Control Related Matters Noted in Audit be filed with the state of domicile and electronically with the NAIC (as a regulator-only non-public document) by August 1? The response for 1st and 3rd quarters should be N/A. A NO response resulting with a bar code is only appropriate in the 2nd quarter.	NO
--	----

Explanation:

- 1.
2. Waiver received.

Bar Code:

1. Medicare Part D Coverage Supplement [Document Identifier 365]
2. Communication of Internal Control Related Matters Noted in Audit (2nd Quarter Only) [Document Identifier 222]



OVERFLOW PAGE FOR WRITE-INS

NONE

STATEMENT AS OF JUNE 30, 2024 OF THE Molina Healthcare of Rhode Island, Inc.

SCHEDULE A - VERIFICATION

Real Estate

	1 Year to Date	2 Prior Year Ended December 31
1. Book/adjusted carrying value, December 31 of prior year		
2. Cost of acquired:		
2.1 Actual cost at time of acquisition		
2.2 Additional investment made after acquisition		
3. Current year change in encumbrances		
4. Total gain (loss) on disposals		
5. Deduct amounts received on disposals		
6. Total foreign exchange change in book/adjusted carrying value		
7. Deduct current year's other than temporary impairment recognized		
8. Deduct current year's depreciation		
9. Book/adjusted carrying value at the end of current period (Lines 1+2+3+4-5+6-7-8)		
10. Deduct total nonadmitted amounts		
11. Statement value at end of current period (Line 9 minus Line 10)		

NONE

SCHEDULE B - VERIFICATION

Mortgage Loans

	1 Year to Date	2 Prior Year Ended December 31
1. Book value/recorded investment excluding accrued interest, December 31 of prior year		
2. Cost of acquired:		
2.1 Actual cost at time of acquisition		
2.2 Additional investment made after acquisition		
3. Capitalized deferred interest and other		
4. Accrual of discount		
5. Unrealized valuation increase/(decrease)		
6. Total gain (loss) on disposals		
7. Deduct amounts received on disposals		
8. Deduct amortization of premium and mortgage interest paid and commitment fees		
9. Total foreign exchange change in book value/recorded investment excluding accrued interest		
10. Deduct current year's other than temporary impairment recognized		
11. Book value/recorded investment excluding accrued interest at end of current period (Lines 1+2+3+4+5+6-7-8+9-10)		
12. Total valuation allowance		
13. Subtotal (Line 11 plus Line 12)		
14. Deduct total nonadmitted amounts		
15. Statement value at end of current period (Line 13 minus Line 14)		

NONE

SCHEDULE BA - VERIFICATION

Other Long-Term Invested Assets

	1 Year to Date	2 Prior Year Ended December 31
1. Book/adjusted carrying value, December 31 of prior year		
2. Cost of acquired:		
2.1 Actual cost at time of acquisition		
2.2 Additional investment made after acquisition		
3. Capitalized deferred interest and other		
4. Accrual of discount		
5. Unrealized valuation increase/(decrease)		
6. Total gain (loss) on disposals		
7. Deduct amounts received on disposals		
8. Deduct amortization of premium and depreciation		
9. Total foreign exchange change in book/adjusted carrying value		
10. Deduct current year's other than temporary impairment recognized		
11. Book/adjusted carrying value at end of current period (Lines 1+2+3+4+5+6-7-8+9-10)		
12. Deduct total nonadmitted amounts		
13. Statement value at end of current period (Line 11 minus Line 12)		

NONE

SCHEDULE D - VERIFICATION

Bonds and Stocks

	1 Year to Date	2 Prior Year Ended December 31
1. Book/adjusted carrying value of bonds and stocks, December 31 of prior year	109,238	107,441
2. Cost of bonds and stocks acquired	122,947	
3. Accrual of discount	856	1,797
4. Unrealized valuation increase/(decrease)	0	
5. Total gain (loss) on disposals	0	
6. Deduct consideration for bonds and stocks disposed of	110,000	
7. Deduct amortization of premium	0	
8. Total foreign exchange change in book/adjusted carrying value	0	
9. Deduct current year's other than temporary impairment recognized	0	
10. Total investment income recognized as a result of prepayment penalties and/or acceleration fees	0	
11. Book/adjusted carrying value at end of current period (Lines 1+2+3+4+5-6-7+8-9+10)	123,041	109,238
12. Deduct total nonadmitted amounts	0	
13. Statement value at end of current period (Line 11 minus Line 12)	123,041	109,238

STATEMENT AS OF JUNE 30, 2024 OF THE Molina Healthcare of Rhode Island, Inc.

SCHEDULE D - PART 1B

Showing the Acquisitions, Dispositions and Non-Trading Activity
During the Current Quarter for all Bonds and Preferred Stock by NAIC Designation

NAIC Designation	1 Book/Adjusted Carrying Value Beginning of Current Quarter	2 Acquisitions During Current Quarter	3 Dispositions During Current Quarter	4 Non-Trading Activity During Current Quarter	5 Book/Adjusted Carrying Value End of First Quarter	6 Book/Adjusted Carrying Value End of Second Quarter	7 Book/Adjusted Carrying Value End of Third Quarter	8 Book/Adjusted Carrying Value December 31 Prior Year
BONDS								
1. NAIC 1 (a)	109,697	122,947	110,000	397	109,697	123,041	0	109,238
2. NAIC 2 (a)	0	0	0	0	0	0	0	0
3. NAIC 3 (a)	0	0	0	0	0	0	0	0
4. NAIC 4 (a)	0	0	0	0	0	0	0	0
5. NAIC 5 (a)	0	0	0	0	0	0	0	0
6. NAIC 6 (a)	0	0	0	0	0	0	0	0
7. Total Bonds	109,697	122,947	110,000	397	109,697	123,041	0	109,238
PREFERRED STOCK								
8. NAIC 1	0	0	0	0	0	0	0	0
9. NAIC 2	0	0	0	0	0	0	0	0
10. NAIC 3	0	0	0	0	0	0	0	0
11. NAIC 4	0	0	0	0	0	0	0	0
12. NAIC 5	0	0	0	0	0	0	0	0
13. NAIC 6	0	0	0	0	0	0	0	0
14. Total Preferred Stock	0	0	0	0	0	0	0	0
15. Total Bonds and Preferred Stock	109,697	122,947	110,000	397	109,697	123,041	0	109,238

(a) Book/Adjusted Carrying Value column for the end of the current reporting period includes the following amount of short-term and cash equivalent bonds by NAIC designation:

NAIC 1 \$0 ; NAIC 2 \$0 ; NAIC 3 \$0 NAIC 4 \$0 ; NAIC 5 \$0 ; NAIC 6 \$0

S102

Schedule DA - Part 1 - Short-Term Investments

N O N E

Schedule DA - Verification - Short-Term Investments

N O N E

Schedule DB - Part A - Verification - Options, Caps, Floors, Collars, Swaps and Forwards

N O N E

Schedule DB - Part B - Verification - Futures Contracts

N O N E

Schedule DB - Part C - Section 1 - Replication (Synthetic Asset) Transactions (RSATs) Open

N O N E

Schedule DB-Part C-Section 2-Reconciliation of Replication (Synthetic Asset) Transactions Open

N O N E

Schedule DB - Verification - Book/Adjusted Carrying Value, Fair Value and Potential Exposure of
Derivatives

N O N E

SCHEDULE E - PART 2 - VERIFICATION

(Cash Equivalents)

	1	2
	Year To Date	Prior Year Ended December 31
1. Book/adjusted carrying value, December 31 of prior year	3,765	1,375
2. Cost of cash equivalents acquired	134,806	26,682
3. Accrual of discount	0	0
4. Unrealized valuation increase/(decrease)	0	0
5. Total gain (loss) on disposals	0	0
6. Deduct consideration received on disposals	133,766	24,292
7. Deduct amortization of premium	0	0
8. Total foreign exchange change in book/adjusted carrying value	0	0
9. Deduct current year's other than temporary impairment recognized	0	0
10. Book/adjusted carrying value at end of current period (Lines 1+2+3+4+5-6-7+8-9)	4,805	3,765
11. Deduct total nonadmitted amounts	0	0
12. Statement value at end of current period (Line 10 minus Line 11)	4,805	3,765

Schedule A - Part 2 - Real Estate Acquired and Additions Made

N O N E

Schedule A - Part 3 - Real Estate Disposed

N O N E

Schedule B - Part 2 - Mortgage Loans Acquired and Additions Made

N O N E

Schedule B - Part 3 - Mortgage Loans Disposed, Transferred or Repaid

N O N E

Schedule BA - Part 2 - Other Long-Term Invested Assets Acquired and Additions Made

N O N E

Schedule BA - Part 3 - Other Long-Term Invested Assets Disposed, Transferred or Repaid

N O N E

STATEMENT AS OF JUNE 30, 2024 OF THE Molina Healthcare of Rhode Island, Inc.

SCHEDULE D - PART 3

Show All Long-Term Bonds and Stock Acquired During the Current Quarter

1 CUSIP Identification	2 Description	3 Foreign	4 Date Acquired	5 Name of Vendor	6 Number of Shares of Stock	7 Actual Cost	8 Par Value	9 Paid for Accrued Interest and Dividends	10 NAIC Designation, NAIC Designation Modifier and SVO Admini- strative Symbol
91282C-6E-5	US TREASURY N/B		06/03/2024	DIRECT		122,947	125,000	1,876	1.A
0109999999. Subtotal - Bonds - U.S. Governments						122,947	125,000	1,876	XXX
2509999997. Total - Bonds - Part 3						122,947	125,000	1,876	XXX
2509999998. Total - Bonds - Part 5						XXX	XXX	XXX	XXX
2509999999. Total - Bonds						122,947	125,000	1,876	XXX
4509999997. Total - Preferred Stocks - Part 3						0	XXX	0	XXX
4509999998. Total - Preferred Stocks - Part 5						XXX	XXX	XXX	XXX
4509999999. Total - Preferred Stocks						0	XXX	0	XXX
5989999997. Total - Common Stocks - Part 3						0	XXX	0	XXX
5989999998. Total - Common Stocks - Part 5						XXX	XXX	XXX	XXX
5989999999. Total - Common Stocks						0	XXX	0	XXX
5999999999. Total - Preferred and Common Stocks						0	XXX	0	XXX
6009999999 - Totals						122,947	XXX	1,876	XXX

E04

STATEMENT AS OF JUNE 30, 2024 OF THE Molina Healthcare of Rhode Island, Inc.

SCHEDULE D - PART 4

Show All Long-Term Bonds and Stock Sold, Redeemed or Otherwise Disposed of During the Current Quarter

1	2	3	4	5	6	7	8	9	10	Change In Book/Adjusted Carrying Value					16	17	18	19	20	21	22
										11	12	13	14	15							
CUSIP Identification	Description	For-foreign	Disposal Date	Name of Purchaser	Number of Shares of Stock	Consideration	Par Value	Actual Cost	Prior Year Book/Adjusted Carrying Value	Unrealized Valuation Increase/(Decrease)	Current Year's (Amortization)/Accretion	Other Than Temporary Impairment Recognized	Total Change in Book/Adjusted Carrying Value (11 + 12 - 13)	Total Foreign Exchange Change in Book /Adjusted Carrying Value	Book/Adjusted Carrying Value at Disposal Date	Foreign Exchange Gain (Loss) on Disposal	Realized Gain (Loss) on Disposal	Total Gain (Loss) on Disposal	Bond Interest/Stock Dividends Received During Year	Stated Contractual Maturity Date	NAIC Designation, NAIC Designation Modifier and SVO Administrative Symbol
..91282C-ER-8	UNITED STATES TREASURY NOTE05/31/2024 .	MATURITY at 100.0000	110,000	110,000	107,016	109,238	0	762	0	762	0	110,000	0	0	0	1,375	05/31/2024	1.A
0109999999	Subtotal - Bonds - U.S. Governments					110,000	110,000	107,016	109,238	0	762	0	762	0	110,000	0	0	0	1,375	XXX	XXX
2509999997	Total - Bonds - Part 4					110,000	110,000	107,016	109,238	0	762	0	762	0	110,000	0	0	0	1,375	XXX	XXX
2509999998	Total - Bonds - Part 5					XXX	XXX	XXX	XXX	XXX	XXX	XXX	XXX	XXX	XXX	XXX	XXX	XXX	XXX	XXX	XXX
2509999999	Total - Bonds					110,000	110,000	107,016	109,238	0	762	0	762	0	110,000	0	0	0	1,375	XXX	XXX
4509999997	Total - Preferred Stocks - Part 4					0	XXX	0	0	0	0	0	0	0	0	0	0	0	0	XXX	XXX
4509999998	Total - Preferred Stocks - Part 5					XXX	XXX	XXX	XXX	XXX	XXX	XXX	XXX	XXX	XXX	XXX	XXX	XXX	XXX	XXX	XXX
4509999999	Total - Preferred Stocks					0	XXX	0	0	0	0	0	0	0	0	0	0	0	0	XXX	XXX
5989999997	Total - Common Stocks - Part 4					0	XXX	0	0	0	0	0	0	0	0	0	0	0	0	XXX	XXX
5989999998	Total - Common Stocks - Part 5					XXX	XXX	XXX	XXX	XXX	XXX	XXX	XXX	XXX	XXX	XXX	XXX	XXX	XXX	XXX	XXX
5989999999	Total - Common Stocks					0	XXX	0	0	0	0	0	0	0	0	0	0	0	0	XXX	XXX
5999999999	Total - Preferred and Common Stocks					0	XXX	0	0	0	0	0	0	0	0	0	0	0	0	XXX	XXX
6009999999	Totals					110,000	XXX	107,016	109,238	0	762	0	762	0	110,000	0	0	0	1,375	XXX	XXX

E05

Schedule DB - Part A - Section 1 - Options, Caps, Floors, Collars, Swaps and Forwards Open

N O N E

Schedule DB - Part B - Section 1 - Futures Contracts Open

N O N E

Schedule DB - Part B - Section 1B - Brokers with whom cash deposits have been made

N O N E

Schedule DB - Part D - Section 1 - Counterparty Exposure for Derivative Instruments Open

N O N E

Schedule DB - Part D-Section 2 - Collateral for Derivative Instruments Open - Pledged By

N O N E

Schedule DB - Part D-Section 2 - Collateral for Derivative Instruments Open - Pledged To

N O N E

Schedule DB - Part E - Derivatives Hedging Variable Annuity Guarantees

N O N E

Schedule DL - Part 1 - Reinvested Collateral Assets Owned

N O N E

Schedule DL - Part 2 - Reinvested Collateral Assets Owned

N O N E

