



PROPERTY AND CASUALTY COMPANIES - ASSOCIATION EDITION

# QUARTERLY STATEMENT

AS OF MARCH 31, 2026  
OF THE CONDITION AND AFFAIRS OF THE

## Providence Washington Insurance Company

NAIC Group Code 1248 1248 NAIC Company Code 24295 Employer's ID Number 05-0204450  
(Current) (Prior)

Organized under the Laws of Rhode Island, State of Domicile or Port of Entry RI

Country of Domicile United States of America

Incorporated/Organized 01/05/1799 Commenced Business 02/01/1799

Statutory Home Office c/o Locke Lord, One Financial Plaza, Suite 2800, Westminster, Providence, RI, US 02903  
Street (City or Town, State, Country and Zip Code)  
(Street and Number)

Main Administrative Office 40 Wall Street, 55th Floor  
New York, NY, US 10005 855-355-0327  
(City or Town, State, Country and Zip Code) (Area Code) (Telephone Number)

Mail Address 40 Wall Street, 55th Floor New York, NY, US 10005  
(Street and Number or P.O. Box) (City or Town, State, Country and Zip Code)

Primary Location of Books and Records 40 Wall Street, 55th Floor  
New York, NY, US 10005 855-355-0327  
(City or Town, State, Country and Zip Code) (Area Code) (Telephone Number)

Internet Website Address www.everspangroup.com

Statutory Statement Contact Nicole Michelle Crowley 855-355-0327  
(Name) (Area Code) (Telephone Number)  
ncrowley@everspangroup.com 212-208-3558  
(E-mail Address) (FAX Number)

### OFFICERS

Chief Executive Officer Claude LeBlanc Chief Financial Officer Steven Joseph Murray  
President Darwin Earl Lucas General Counsel and Corporate Secretary Nicole Michelle Crowley

### OTHER

David Trick, Executive Vice President and Treasurer Flavia Laurice Pemberton, Chief Claims Officer Laurence Robert McClure II, Chief Actuary

### DIRECTORS OR TRUSTEES

Claude LeBlanc Darwin Earl Lucas Lawrence Frederic Metz  
Rhonta Sharon Smith David Trick

State of New York County of New York SS

The officers of this reporting entity being duly sworn, each depose and say that they are the described officers of said reporting entity, and that on the reporting period stated above, all of the herein described assets were the absolute property of the said reporting entity, free and clear from any liens or claims thereon, except as herein stated, and that this statement, together with related exhibits, schedules and explanations therein contained, annexed or referred to, is a full and true statement of all the assets and liabilities and of the condition and affairs of the said reporting entity as of the reporting period stated above, and of its income and deductions therefrom for the period ended, and have been completed in accordance with the NAIC Annual Statement Instructions and Accounting Practices and Procedures manual except to the extent that: (1) state law may differ; or, (2) that state rules or regulations require differences in reporting not related to accounting practices and procedures, according to the best of their information, knowledge and belief, respectively. Furthermore, the scope of this attestation by the described officers also includes the related corresponding electronic filing with the NAIC, when required, that is an exact copy (except for formatting differences due to electronic filing) of the enclosed statement. The electronic filing may be requested by various regulators in lieu of or in addition to the enclosed statement.

Darwin Earl Lucas  
Darwin Earl Lucas  
President

Nicole Crowley  
Nicole Michelle Crowley  
General Counsel and Corporate Secretary

Steven Joseph Murray  
Steven Joseph Murray  
Chief Financial Officer

Subscribed and sworn to before me this 15th day of May 2026

- a. Is this an original filing? ..... Yes [ X ] No [ ]  
b. If no,  
1. State the amendment number.....  
2. Date filed .....  
3. Number of pages attached.....

**RASHIDA DENISE WILSON**  
NOTARY PUBLIC, STATE OF NEW YORK  
Registration No. 01W6341871  
Qualified in New York County  
Commission Expires 05/16/2028

STATEMENT AS OF MARCH 31, 2026 OF THE PROVIDENCE WASHINGTON INSURANCE COMPANY

**ASSETS**

	Current Statement Date			4 December 31 Prior Year Net Admitted Assets
	1 Assets	2 Nonadmitted Assets	3 Net Admitted Assets (Cols. 1 - 2)	
1. Bonds .....	10,619,745		10,619,745	10,417,250
2. Stocks:				
2.1 Preferred stocks .....			0	0
2.2 Common stocks .....	0	0	0	0
3. Mortgage loans on real estate:				
3.1 First liens .....			0	0
3.2 Other than first liens.....			0	0
4. Real estate:				
4.1 Properties occupied by the company (less \$ encumbrances) .....			0	0
4.2 Properties held for the production of income (less \$ ..... encumbrances) .....			0	0
4.3 Properties held for sale (less \$ encumbrances) .....			0	0
5. Cash (\$ ..... 463,060 ), cash equivalents (\$ ..... 2,337,897 ) and short-term investments (\$ ..... 0 ) .....	2,800,957		2,800,957	2,614,252
6. Contract loans (including \$ ..... premium notes) .....			0	0
7. Derivatives .....			0	0
8. Other invested assets .....			0	0
9. Receivables for securities .....	0		0	0
10. Securities lending reinvested collateral assets .....			0	0
11. Aggregate write-ins for invested assets .....	0	0	0	0
12. Subtotals, cash and invested assets (Lines 1 to 11) .....	13,420,702	0	13,420,702	13,031,502
13. Title plants less \$ ..... charged off (for Title insurers only) .....			0	0
14. Investment income due and accrued .....	74,771		74,771	87,537
15. Premiums and considerations:				
15.1 Uncollected premiums and agents' balances in the course of collection .....	195,151	0	195,151	243,925
15.2 Deferred premiums, agents' balances and installments booked but deferred and not yet due (including \$ ..... earned but unbilled premiums) .....	0		0	0
15.3 Accrued retrospective premiums (\$ ..... ) and contracts subject to redetermination (\$ ..... ) .....			0	0
16. Reinsurance:				
16.1 Amounts recoverable from reinsurers .....	22,314		22,314	7,729
16.2 Funds held by or deposited with reinsured companies .....			0	0
16.3 Other amounts receivable under reinsurance contracts .....			0	0
17. Amounts receivable relating to uninsured plans .....			0	0
18.1 Current federal and foreign income tax recoverable and interest thereon ....			0	0
18.2 Net deferred tax asset .....	0		0	0
19. Guaranty funds receivable or on deposit .....			0	0
20. Electronic data processing equipment and software .....			0	0
21. Furniture and equipment, including health care delivery assets (\$ ..... ) .....	0		0	0
22. Net adjustment in assets and liabilities due to foreign exchange rates .....			0	0
23. Receivables from parent, subsidiaries and affiliates .....	90,537		90,537	40,990
24. Health care (\$ ..... ) and other amounts receivable .....			0	0
25. Aggregate write-ins for other than invested assets .....	2,633	2,063	570	0
26. Total assets excluding Separate Accounts, Segregated Accounts and Protected Cell Accounts (Lines 12 to 25) .....	13,806,108	2,063	13,804,045	13,411,683
27. From Separate Accounts, Segregated Accounts and Protected Cell Accounts .....			0	0
28. Total (Lines 26 and 27)	13,806,108	2,063	13,804,045	13,411,683
<b>DETAILS OF WRITE-INS</b>				
1101. ....				
1102. ....				
1103. ....				
1198. Summary of remaining write-ins for Line 11 from overflow page .....	0	0	0	0
1199. Totals (Lines 1101 through 1103 plus 1198)(Line 11 above)	0	0	0	0
2501. Prepaid expenses .....	2,063	2,063	0	
2502. Other Assets .....	570		570	
2503. ....				
2598. Summary of remaining write-ins for Line 25 from overflow page .....	0	0	0	0
2599. Totals (Lines 2501 through 2503 plus 2598)(Line 25 above)	2,633	2,063	570	0

STATEMENT AS OF MARCH 31, 2026 OF THE PROVIDENCE WASHINGTON INSURANCE COMPANY  
**LIABILITIES, SURPLUS AND OTHER FUNDS**

	1 Current Statement Date	2 December 31, Prior Year
1. Losses (current accident year \$ ..... ) .....	9,661	10,001
2. Reinsurance payable on paid losses and loss adjustment expenses .....	0	0
3. Loss adjustment expenses .....	1,640	203
4. Commissions payable, contingent commissions and other similar charges .....	(51)	(115)
5. Other expenses (excluding taxes, licenses and fees) .....	20,001	24,507
6. Taxes, licenses and fees (excluding federal and foreign income taxes) .....	12,493	9,341
7.1 Current federal and foreign income taxes (including \$ ..... on realized capital gains (losses)) .....	0	0
7.2 Net deferred tax liability .....	0	0
8. Borrowed money \$ ..... and interest thereon \$ .....	0	0
9. Unearned premiums (after deducting unearned premiums for ceded reinsurance of \$ ..... 260,040 and including warranty reserves of \$ ..... and accrued accident and health experience rating refunds including \$ .....0 for medical loss ratio rebate per the Public Health Service Act) .....	20,934	24,939
10. Advance premium .....		
11. Dividends declared and unpaid:		
11.1 Stockholders .....		
11.2 Policyholders .....		
12. Ceded reinsurance premiums payable (net of ceding commissions) .....	309,186	234,252
13. Funds held by company under reinsurance treaties .....		0
14. Amounts withheld or retained by company for account of others .....		
15. Remittances and items not allocated .....		
16. Provision for reinsurance (including \$ ..... certified) .....	0	0
17. Net adjustments in assets and liabilities due to foreign exchange rates .....		
18. Drafts outstanding .....		
19. Payable to parent, subsidiaries and affiliates .....	887	1,078
20. Derivatives .....	0	0
21. Payable for securities .....	0	0
22. Payable for securities lending .....	0	0
23. Liability for amounts held under uninsured plans .....		
24. Capital notes \$ ..... and interest thereon \$ .....		
25. Aggregate write-ins for liabilities .....	8,721	11,680
26. Total liabilities excluding protected cell liabilities (Lines 1 through 25) .....	383,472	315,886
27. Protected cell liabilities .....		
28. Total liabilities (Lines 26 and 27) .....	383,472	315,886
29. Aggregate write-ins for special surplus funds .....	0	0
30. Common capital stock .....	5,021,200	5,021,200
31. Preferred capital stock .....		
32. Aggregate write-ins for other than special surplus funds .....	0	0
33. Surplus notes .....		
34. Gross paid in and contributed surplus .....	8,007,843	8,007,843
35. Unassigned funds (surplus) .....	391,530	66,754
36. Less treasury stock, at cost:		
36.1 ..... shares common (value included in Line 30 \$ ..... ) .....	0	0
36.2 ..... shares preferred (value included in Line 31 \$ ..... ) .....		
37. Surplus as regards policyholders (Lines 29 to 35, less 36) .....	13,420,573	13,095,797
38. Totals (Page 2, Line 28, Col. 3)	13,804,045	13,411,683
<b>DETAILS OF WRITE-INS</b>		
2501. Deferred Ceding Commissions .....	1,752	962
2502. Due to Third Party Administrators .....	6,969	10,718
2503. ....		
2598. Summary of remaining write-ins for Line 25 from overflow page .....	0	0
2599. Totals (Lines 2501 through 2503 plus 2598)(Line 25 above)	8,721	11,680
2901. ....		
2902. ....		
2903. ....		
2998. Summary of remaining write-ins for Line 29 from overflow page .....	0	0
2999. Totals (Lines 2901 through 2903 plus 2998)(Line 29 above)	0	0
3201. ....		
3202. ....		
3203. ....		
3298. Summary of remaining write-ins for Line 32 from overflow page .....	0	0
3299. Totals (Lines 3201 through 3203 plus 3298)(Line 32 above)	0	0

## STATEMENT OF INCOME

	1 Current Year to Date	2 Prior Year to Date	3 Prior Year Ended December 31
<b>UNDERWRITING INCOME</b>			
1. Premiums earned:			
1.1 Direct (written \$ 160,004 )	127,596	1,465	198,273
1.2 Assumed (written \$ 0 )	0		0
1.3 Ceded (written \$ 154,880 )	118,468	1,099	178,028
1.4 Net (written \$ 5,124 )	9,128	366	20,245
<b>DEDUCTIONS:</b>			
2. Losses incurred (current accident year \$ 8,578 ):			
2.1 Direct	(96,936)	(84,520)	(10,400,946)
2.2 Assumed	0		0
2.3 Ceded	(100,407)	(84,756)	(10,413,091)
2.4 Net	3,471	236	12,145
3. Loss adjustment expenses incurred	1,274		206
4. Other underwriting expenses incurred	(233,440)	63,734	252,085
5. Aggregate write-ins for underwriting deductions	0	0	0
6. Total underwriting deductions (Lines 2 through 5)	(228,695)	63,970	264,436
7. Net income of protected cells			
8. Net underwriting gain (loss) (Line 1 minus Line 6 + Line 7)	237,823	(63,604)	(244,191)
<b>INVESTMENT INCOME</b>			
9. Net investment income earned	88,974	87,029	353,136
10. Net realized capital gains (losses) less capital gains tax of \$		0	
11. Net investment gain (loss) (Lines 9 + 10)	88,974	87,029	353,136
<b>OTHER INCOME</b>			
12. Net gain or (loss) from agents' or premium balances charged off (amount recovered \$ amount charged off \$ )	0	0	0
13. Finance and service charges not included in premiums			
14. Aggregate write-ins for miscellaneous income	42	0	119
15. Total other income (Lines 12 through 14)	42	0	119
16. Net income before dividends to policyholders, after capital gains tax and before all other federal and foreign income taxes (Lines 8 + 11 + 15)	326,839	23,425	109,064
17. Dividends to policyholders			
18. Net income, after dividends to policyholders, after capital gains tax and before all other federal and foreign income taxes (Line 16 minus Line 17)	326,839	23,425	109,064
19. Federal and foreign income taxes incurred			
20. Net income (Line 18 minus Line 19)(to Line 22)	326,839	23,425	109,064
<b>CAPITAL AND SURPLUS ACCOUNT</b>			
21. Surplus as regards policyholders, December 31 prior year	13,095,797	12,986,733	12,986,733
22. Net income (from Line 20)	326,839	23,425	109,064
23. Net transfers (to) from Protected Cell accounts			
24. Change in net unrealized capital gains (losses) less capital gains tax of \$			
25. Change in net unrealized foreign exchange capital gain (loss)			
26. Change in net deferred income tax			
27. Change in nonadmitted assets	(2,063)		0
28. Change in provision for reinsurance			0
29. Change in surplus notes			
30. Surplus (contributed to) withdrawn from protected cells			
31. Cumulative effect of changes in accounting principles			
32. Capital changes:			
32.1 Paid in			
32.2 Transferred from surplus (stock dividend)			
32.3 Transferred to surplus			
33. Surplus adjustments:			
33.1 Paid in	0	0	0
33.2 Transferred to capital (stock dividend)			
33.3 Transferred from capital			
34. Net remittances from or (to) home office			
35. Dividends to stockholders			
36. Change in treasury stock			0
37. Aggregate write-ins for gains and losses in surplus	0	0	0
38. Change in surplus as regards policyholders (Lines 22 through 37)	324,776	23,425	109,064
39. Surplus as regards policyholders, as of statement date (Lines 21 plus 38)	13,420,573	13,010,158	13,095,797
<b>DETAILS OF WRITE-INS</b>			
0501.			
0502.			
0503.			
0598. Summary of remaining write-ins for Line 5 from overflow page	0	0	0
0599. Totals (Lines 0501 through 0503 plus 0598)(Line 5 above)	0	0	0
1401. Other income (expense)	42	0	119
1402.			
1403.			
1498. Summary of remaining write-ins for Line 14 from overflow page	0	0	0
1499. Totals (Lines 1401 through 1403 plus 1498)(Line 14 above)	42	0	119
3701.			
3702.			
3703.			
3798. Summary of remaining write-ins for Line 37 from overflow page	0	0	0
3799. Totals (Lines 3701 through 3703 plus 3798)(Line 37 above)	0	0	0

STATEMENT AS OF MARCH 31, 2026 OF THE PROVIDENCE WASHINGTON INSURANCE COMPANY

**CASH FLOW**

	1 Current Year To Date	2 Prior Year To Date	3 Prior Year Ended December 31
<b>Cash from Operations</b>			
1. Premiums collected net of reinsurance .....	128,831	(79)	35,511
2. Net investment income .....	99,601	81,257	306,047
3. Miscellaneous income .....	42	0	119
4. Total (Lines 1 to 3) .....	228,474	81,178	341,677
5. Benefit and loss related payments .....	18,396	1	9,873
6. Net transfers to Separate Accounts, Segregated Accounts and Protected Cell Accounts .....	0	0	0
7. Commissions, expenses paid and aggregate write-ins for deductions .....	(233,103)	51,485	302,152
8. Dividends paid to policyholders .....	0	0	0
9. Federal and foreign income taxes paid (recovered) net of \$ ..... tax on capital gains (losses) .....	0	0	0
10. Total (Lines 5 through 9) .....	(214,707)	51,486	312,025
11. Net cash from operations (Line 4 minus Line 10) .....	443,181	29,692	29,652
<b>Cash from Investments</b>			
12. Proceeds from investments sold, matured or repaid:			
12.1 Bonds .....	0	0	2,641,967
12.2 Stocks .....	0	0	0
12.3 Mortgage loans .....	0	0	0
12.4 Real estate .....	0	0	0
12.5 Other invested assets .....	0	0	0
12.6 Net gains or (losses) on cash, cash equivalents and short-term investments .....	0	0	0
12.7 Miscellaneous proceeds .....	0	2,561	0
12.8 Total investment proceeds (Lines 12.1 to 12.7) .....	0	2,561	2,641,967
13. Cost of investments acquired (long-term only):			
13.1 Bonds .....	200,355	485,599	2,596,190
13.2 Stocks .....	0	0	0
13.3 Mortgage loans .....	0	0	0
13.4 Real estate .....	0	0	0
13.5 Other invested assets .....	0	0	0
13.6 Miscellaneous applications .....	0	0	0
13.7 Total investments acquired (Lines 13.1 to 13.6) .....	200,355	485,599	2,596,190
14. Net increase/(decrease) in contract loans and premium notes .....	0	0	0
15. Net cash from investments (Line 12.8 minus Line 13.7 and Line 14) .....	(200,355)	(483,038)	45,777
<b>Cash from Financing and Miscellaneous Sources</b>			
16. Cash provided (applied):			
16.1 Surplus notes, capital notes .....	0	0	0
16.2 Capital and paid in surplus, less treasury stock .....	0	0	0
16.3 Borrowed funds .....	0	0	0
16.4 Net deposits on deposit-type contracts and other insurance liabilities .....	0	0	0
16.5 Dividends to stockholders .....	0	0	0
16.6 Other cash provided (applied) .....	(56,120)	46,682	(53,256)
17. Net cash from financing and miscellaneous sources (Line 16.1 through Line 16.4 minus Line 16.5 plus Line 16.6) .....	(56,120)	46,682	(53,256)
<b>RECONCILIATION OF CASH, CASH EQUIVALENTS AND SHORT-TERM INVESTMENTS</b>			
18. Net change in cash, cash equivalents and short-term investments (Line 11, plus Lines 15 and 17) .....	186,706	(406,665)	22,172
19. Cash, cash equivalents and short-term investments:			
19.1 Beginning of year .....	2,614,252	2,592,079	2,592,079
19.2 End of period (Line 18 plus Line 19.1) .....	2,800,957	2,185,415	2,614,252

Note: Supplemental disclosures of cash flow information for non-cash transactions:

--	--	--	--

## NOTES TO FINANCIAL STATEMENTS

### 1. Summary of Significant Accounting Practices and Going Concern

The descriptions appearing below in this Note provide an update of those discussed in “Note 1: Summary of Significant Accounting Practices and Going Concern” in the Company’s Annual Statement for the for the year ended December 31, 2025, and should be read in conjunction with the complete descriptions provided in the 2025 Annual Statement.

#### A. Accounting Practices

The accompanying financial statements of Providence Washington Insurance Company (the "Company" or "PWIC") have been prepared on the basis of accounting practices prescribed or permitted by the Rhode Island Department of Business Regulation ("RIDBR"). RIDBR recognizes statutory accounting practices prescribed or permitted by the State of Rhode Island, which requires that insurance companies domiciled in the State of Rhode Island prepare their statutory basis financial statements in accordance with the National Association of Insurance Commissioners ("NAIC") Accounting Practices and Procedures manual ("NAIC SAP").

PWIC does not have any currently applicable prescribed and permitted accounting practices that differ from NAIC SAP.

A reconciliation of the Company's net income and surplus between practices prescribed and permitted by RIDBR and NAIC SAP is shown below:

NET INCOME	SSAP #	F/S Page	F/S Line #	<u>March 31, 2026</u>	<u>December 31, 2025</u>
1. PWIC state basis	XXX	XXX	XXX	\$ 326,839	\$ 109,064
2. State Prescribed Practices that increase (decrease) NAIC SAP				—	—
3. State Permitted Practices that increase (decrease) NAIC SAP				—	—
4. NAIC SAP (1-2-3 = 4)	XXX	XXX	XXX	<u>\$ 326,839</u>	<u>\$ 109,064</u>
<b>SURPLUS</b>					
5. PWIC state basis	XXX	XXX	XXX	\$ 13,420,573	\$ 13,095,797
6. State Prescribed Practices that increase (decrease) NAIC SAP				—	—
7. State Permitted Practices that increase (decrease) NAIC SAP				—	—
8. NAIC SAP (5-6-7 = 8)	XXX	XXX	XXX	<u>\$ 13,420,573</u>	<u>\$ 13,095,797</u>

#### C. Accounting Policies

2. Investments in long-term bond investments with an NAIC designation of 1 or 2 that are not backed by loans are reported at amortized cost; amortized cost is computed via the effective interest method. For bonds purchased at a price below par value, discounts are accreted over the remaining term of the bond. For bonds purchased at a price above par value, which have call features, premiums are amortized to the call date that produces the lowest yield. For bonds purchased at a premium that do not have call features, such premiums are amortized over the remaining term of the bond. Bonds with a NAIC designation of 1 or 2 are generally rated investment grade by a nationally recognized statistical rating organization.

Investments in long term bonds that have an NAIC designation of 3 to 6 that are not backed by loans are reported at the lower of amortized cost (as described above) or fair value as determined by using independent market sources, when available, and appropriate valuation methodologies when market quotes were not available. In cases where specific market quotes are unavailable, interpreting market data and estimating market values require considerable judgment by management. Accordingly, the estimates presented are not necessarily indicative of the amount PWIC could realize in the market.

The Company has a formal review process to evaluate whether impairments in the fair value of securities in its investment portfolio are "other-than-temporary". This assessment is based upon various factors, including: (i) actual or expected principal and interest payment defaults on these securities; (ii) analysis of the creditworthiness of the issuer and (iii) for debt securities that are non-highly rated beneficial interests in securitized financial assets, analysis of whether there was an adverse change in projected cash flows. If the Company believes the decline is “other-than-temporary”, the Company will write-down the carrying value of the investment to the present value of the cash flows expected to be received and record a realized loss in the Statement of Income. In addition, if management either: (i) has the intent to sell its bond investment or (ii) determines that the Company more likely than not will be required to sell the bond investment before its anticipated recovery of the amortized cost basis less any current period credit impairment, then the Company will write-down the carrying value of the investment to fair value and an other-than-temporary impairment charge is recorded as a realized loss in the Statement of Income. PWIC’s assessment of a decline in value includes management’s current judgment of the factors noted above. If that judgment changes in the future, PWIC may ultimately record a loss after having originally concluded that the decline in value was temporary.

6. The Company did not hold investments in Residential mortgage-backed securities ("RMBS"), loan-backed and structured securities, including beneficial interests in securitizations at or during the three months ended March 31, 2026.

#### D. Going Concern

Not Applicable.

### 2. Accounting Changes and Corrections of Errors

No significant change from 2025 Notes to Financial Statements.

### 3. Business Combinations and Goodwill

No significant change from 2025 Notes to Financial Statements.

### 4. Discontinued Operations

No significant change from 2025 Notes to Financial Statements.

## NOTES TO FINANCIAL STATEMENTS

### 5. Investments

#### D. Loan-Backed and Structured Securities

The Company has no loan-backed and structured securities as of March 31, 2026.

#### E. Dollar Repurchase Agreements and/or Securities Lending Transactions

The Company has no open repurchase agreements or securities lending transactions as of March 31, 2026.

#### F. Repurchase Agreement Transactions Accounted for as a Secured Borrowing

The Company has no open repurchase agreement transactions accounted for as secured borrowing as of March 31, 2026.

#### G. Reverse Repurchase Agreement Transactions Accounted for as a Secured Borrowing

The Company has no open reverse repurchase agreement transactions accounted for as secured borrowing as of March 31, 2026.

#### H. Repurchase Agreement Transactions Accounted for as a Sale

The Company has no repurchase agreement transactions accounted for as a sale as of March 31, 2026.

#### I. Reverse Repurchase Agreement Transactions Accounted for as a Sale

The Company has no reverse repurchase agreement transactions accounted for as a sale as of March 31, 2026.

#### J. Real Estate Impairment and Land Sales

The Company did not hold investments in real estate, recognize any real estate impairments or engage in retail land sales as of March 31, 2026.

#### K. Low Income Housing Tax Credits

The Company did not hold low income housing tax credits as investments as of March 31, 2026.

#### L. Restricted Assets

##### 1. Restricted assets (including pledged) summarized by restricted asset category

Restricted Asset Category	Gross (Admitted & Nonadmitted) Restricted						Current Year				
	Current Year						Percentage				
	1	2	3	4	5	6	7	8	9	10	11
	Total General Account (G/A)	G/A Supporting Protected Cell Activity (a)	Total Protected Cell Account Restricted Assets	Protected Cell Account Assets Supporting G/A Activity (b)	Total (1 plus 3)	Total From Prior Year	Increase / (Decrease) (5 minus 6)	Total Nonadmitted Restricted	Total Admitted Restricted (5 minus 8)	Gross (Admitted & Nonadmitted) Restricted to Total Assets (c)	Admitted Restricted to Total Admitted Assets (d)
a. Subject to contractual obligation for which liability is not shown						\$ —	\$ —	\$ —	\$ —	— %	— %
b. Collateral held under security lending arrangements											
c. Subject to repurchase agreements											
d. Subject to reverse repurchase agreements											
e. Subject to dollar repurchase agreements											
f. Subject to dollar reverse repurchase agreements											
g. Placed under option contracts											
h. Letter stock or securities restricted as to sale - excluding FHLB capital stock											
i. FHLB capital stock											
j. On deposit with states	\$5,510,275				\$ 5,510,275	\$ 5,508,525	\$ 1,750	\$ —	\$ 5,510,275	39.912 %	39.918 %
k. On deposit with other regulatory bodies	—				—	—	—	—	—	— %	— %
l. Pledged as collateral to FHLB (including assets backing funding agreements)											
m. Pledged as collateral not captured in other categories											
n. Other restricted assets											
o. Total Restricted Assets	\$5,510,275	\$ —	\$ —	\$ —	\$ 5,510,275	\$ 5,508,525	\$ 1,750	\$ —	\$ 5,510,275	39.912 %	39.918 %

(a) Subset of column 1

(b) Subset of column 3

(c) Column 5 divided by Asset Page, Column 1, Line 28

(d) Column 9 divided by Asset Page, Column 3, Line 28

##### 2. Details of assets pledged as collateral not captured in other categories (contracts that share similar characteristics, such as reinsurance

**NOTES TO FINANCIAL STATEMENTS**

and derivative, as reported in the aggregate)

Description of Assets	Gross (Admitted & Nonadmitted) Restricted							Percentage		
	Current Year					6	7	8	9	10
	1	2	3	4	5					
	Total General Account (G/A)	G/A Supporting Protected Cell Activity (a)	Total Protected Cell Account Restricted Assets	Protected Cell Account Assets Supporting G/A Activity (b)	Total (1 plus 3)	Total From Prior Year	Increase / (Decrease) (5 minus 6)	Total Current Year Admitted Restricted	Gross (Admitted & Nonadmitted) Restricted to Total Assets	Admitted Restricted to Total Admitted Assets
Total (c)				None						

(a) Subset of column 1

(b) Subset of column 3

(c) Total Line for Columns 1 through 7 should equal 5L(1)m Columns 1 through 7 respectively and Total Line for Columns 8 through 10 should equal 5L(1)m Columns 9 through 11 respectively.

- 3. Detail of other restricted assets (contracts that share similar characteristics, such as reinsurance and derivative, as reported in the aggregate)

Description of Assets	Gross (Admitted & Nonadmitted) Restricted							Percentage		
	Current Year					6	7	8	9	10
	1	2	3	4	5					
	Total General Account (G/A)	G/A Supporting Protected Cell Activity (a)	Total Protected Cell Account Restricted Assets	Protected Cell Account Assets Supporting G/A Activity (b)	Total (1 plus 3)	Total From Prior Year	Increase / (Decrease) (5 minus 6)	Total Current Year Admitted Restricted	Gross (Admitted & Nonadmitted) Restricted to Total Assets	Admitted Restricted to Total Admitted Assets
							—		— %	— %
				None			—		— %	— %
Total (c)	\$ —	\$ —	\$ —	\$ —	\$ —	\$ —	\$ —	\$ —	— %	— %

(a) Subset of column 1

(b) Subset of column 3

(c) Total Line for Columns 1 through 7 should equal 5L(1)n Columns 1 through 7 respectively and Total Line for Columns 8 through 10 should equal 5L(1)n Columns 9 through 11 respectively.

## NOTES TO FINANCIAL STATEMENTS

### 4. Collateral Received and Reflected as Assets Within the Reporting Entity's Financial Statements

	1	2	3	4
	Book/Adjusted Carrying Value (BACV)	Fair Value	% of BACV to Total Assets (Admitted and Nonadmitted) *	% of BACV to Total Admitted Assets **
<b>Collateral Assets</b>				
General Account				
a. Cash, Cash Equivalents and Short-Term Investments				
b. Schedule D, Part 1				
c. Schedule D, Part 2, Sec. 1				
d. Schedule D, Part 2, Sec. 2				
e. Schedule B				
f. Schedule A				
g. Schedule BA, Part 1				
h. Schedule DL, Part 1		None		
i. Other				
j. Total Collateral Assets (a+b+c+d+e+f+g+h+i)	\$ —		— %	— %
<b>Protected Cell</b>				
k. Cash, Cash Equivalents and Short-Term Investments				
l. Schedule D, Part 1				
m. Schedule D, Part 2, Sec. 1				
n. Schedule D, Part 2, Sec. 2				
o. Schedule B				
p. Schedule A				
q. Schedule BA, Part 1				
r. Schedule DL, Part 1		None		
s. Other				
t. Total Collateral Assets (k+l+m+n+o+p+q+r+s)	\$ —		— %	— %

\* j = Column 1 divided by Asset Page, Line 26 (Column 1)

\* t = Column 1 divided by Asset Page, Line 27 (Column 1)

\*\* j = Column 1 divided by Asset Page, Line 26 (Column 3)

\*\* t = Column 1 divided by Asset Page, Line 27 (Column 3)

	1	2
	Amount	% of Liability to Total Liabilities
u. Recognized Obligation to Return Collateral Asset (General Account)		
v. Recognized Obligation to Return Collateral Asset (Protected Cell)	None	

\* u = Column 1 divided by Liability Page, Line 26 (Column 1)

\* v = Column 1 divided by Liability Page, Line 27 (Column 1)

### M. Working Capital Finance Investments

Not Applicable.

### N. Offsetting and Netting of Assets and Liabilities

Not Applicable.

### O. 5GI Securities

Not Applicable.

### P. Short Sales

Not Applicable.

### Q. Prepayment Penalty and Acceleration Fees

Not Applicable.

### R. Share of Cash Pool by Asset Type

Not Applicable.

### S. Aggregate Collateral Loans by Qualifying Investment Collateral

Not Applicable.

### 6. Joint Ventures, Partnerships and Limited Liability Companies

No significant change from 2025 Notes to Financial Statements.

### 7. Investment Income

A. The Company does not admit investment income due and accrued if amounts are over 90 days past due.

B. There was no nonadmitted investment income due and accrued as of March 31, 2026.

C. The gross, nonadmitted and admitted amounts for interest income due and accrued as of March 31, 2026.

## NOTES TO FINANCIAL STATEMENTS

Interest Income Due and Accrued	Amount
1. Gross	\$ 74,771
2. Nonadmitted	
3. Admitted	\$ 74,771

D. The aggregate deferred interest.

Aggregate Deferred Interest	Amount
	\$ —

E. The cumulative amounts of paid-in-kind (PIK) interest included in the current principal balance.

Cumulative amounts of PIK interest included in the current principal balance	Amount
	\$ —

### 8. Derivative Instruments

The Company did not hold derivative instruments during 2026.

### 9. Income Taxes

#### D. Reconciliation of Federal Income Tax Rate to Actual Effective Rate

The provision for federal income taxes incurred is different from that which would be obtained by applying the statutory federal income tax rate to income before income taxes. The significant items causing this difference are as follows:

	Amount	Effective Tax Rate (%)
<b>Provision computed at statutory rate</b>	\$ 68,636	21.00 %
<b>Increase (decrease) in actual tax reported resulting from:</b>		
20% Change in UPR	(168)	(0.05) %
Investments	(1,961)	(0.60) %
Net Operating Loss	(33,667)	(10.30) %
Tax Deductible Goodwill	(32,882)	(10.06) %
<b>Total statutory income taxes</b>	<b>\$ —</b>	<b>— %</b>
Federal and foreign income taxes incurred	\$ —	— %
Realized capital gains (losses) tax	—	— %
Change in net deferred income taxes	—	— %
<b>Total statutory income taxes</b>	<b>\$ —</b>	<b>— %</b>

#### F. Consolidated Federal Income Tax Return

- The Company is party to written tax-sharing agreements ("the OSG Subgroup TSA"), which includes Octave Specialty Group, Inc., Everspan Indemnity Insurance Company ("Everspan Indemnity"), Everspan Insurance Company, Greenwood Insurance Company, Consolidated Specialty Insurance Company, Capacity Marine Corporation, Riverton Insurance Agency Corporation, and Ambac Asset Management, Inc. (the "OSG Subgroup"). The OSG Subgroup is included in OSG's consolidated federal income tax return.
- Under the OSG Subgroup TSA amounts assessed/reimbursed are based upon separate tax return calculations made as if the Company had filed its own federal income tax return for each taxable period.

#### G. Impact of Tax Law Changes

Not applicable.

### 10. Information Concerning Parent, Subsidiaries, Affiliates and Other Related Parties

The descriptions appearing below in this Note provide an update of those discussed in "Note 10: Information Concerning Parent, Subsidiaries, Affiliates and Other Related Parties" in the Company's Annual Statement for the year ended December 31, 2025, and should be read in conjunction with the complete descriptions provided in the 2025 Annual Statement.

#### A. Nature of Relationships

No significant change from 2025 Notes to Financial Statements.

#### B. Significant Transactions and Changes in Terms of Intercompany Arrangements

No significant change from 2025 Notes to Financial Statements.

### 11. Debt

A. The Company has no capital note obligations or any other debt outstanding.

B. The Company has no funding agreements with Federal Home Loan Banks (FHLB).

### 12. Retirement Plans, Deferred Compensation, Postemployment Benefits and Compensated Absences and Other Postretirement Benefit Plans.

## NOTES TO FINANCIAL STATEMENTS

- A. The Company does not sponsor a defined benefit pension plan.
13. Capital and Surplus and Shareholders' and Policyholders' Dividend Restrictions  
No significant change from 2025 Notes to Financial Statements.
14. Contingencies  
No significant change from 2025 Notes to Financial Statements.
15. Leases  
No significant change from 2025 Notes to Financial Statements.
16. Information About Financial Instruments With Off-Balance Sheet Risk and Financial Instruments With Concentrations of Credit Risk  
No significant change from 2025 Notes to Financial Statements.
17. Sale, Transfer and Servicing of Financial Assets and Extinguishments of Liabilities
- A. The Company has not sold or transferred any receivables during 2026.
- B. The Company has not transferred or serviced any financial assets during 2026.
- C. The Company did not engage in any wash sale transactions during 2026.
18. Gain or Loss to the Reporting Entity from Uninsured Plans and the Uninsured Portion of Partially Insured Plans  
No significant change from 2025 Notes to Financial Statements.
19. Direct Premium Written or Produced by Managing General Agents or Third Party Administrators  
No significant change from 2025 Notes to Financial Statements.
20. Fair Value Measurements
- A. Inputs Used for Assets and Liabilities Measured and Reported at Fair Value
1. The fair value of Company's financial assets and liabilities has been classified, for disclosure purposes, based on a hierarchy defined by the Statement of Statutory Accounting Principles No. 100R "Fair Value Measurements" ("SSAP 100R"). SSAP 100R specifies a fair value hierarchy based on whether the inputs to valuation techniques used to measure fair value are observable or unobservable. Observable inputs reflect market data obtained from independent sources, while unobservable inputs reflect Company-based assumptions. In accordance with SSAP 100R, the fair value hierarchy has three broad levels as follows:
- Level 1 – Quoted prices for identical instruments in active markets. Assets classified as Level 1 include U.S. treasury securities and money market funds.
  - Level 2 – Quoted prices for similar instruments in active markets; quoted prices for identical or similar instruments in markets that are not active; and model-derived valuations in which all significant inputs and significant value drivers are observable in active markets. Assets classified as Level 2 generally include fixed maturity securities representing municipal and corporate obligations.
  - Level 3 – Model derived valuations in which one or more significant inputs or significant value drivers are unobservable. This hierarchy requires the use of observable market data when available. Assets and liabilities classified as Level 3 would include fixed maturity securities for which quoted prices are not available and valuation uses models that require significant Company based assumptions.

### Determination of Fair Value:

When available, the Company uses quoted market prices specific to the financial instrument to determine fair value, and classifies such items within Level 1. The determination of fair value for financial instruments categorized in Level 2 or 3 involves judgment due to the complexity of factors contributing to the valuation. Third-party sources from which we obtain independent market quotes also use assumptions, judgments and estimates in determining financial instrument values and different third parties may use different methodologies or provide different prices for securities. As a result of these factors, the actual trade value of a financial instrument in the market, or exit value of a financial instrument position by the Company, may be significantly different from its recorded fair value.

- A. The following table sets forth PWIC's financial assets and liabilities that were measured and reported at fair value in the statement of financial position after initial recognition as of March 31, 2026 by level within the fair value hierarchy.

<b>March 31, 2026</b>	<b>Level 1</b>	<b>Level 2</b>	<b>Level 3</b>	<b>Net Asset Value (NAV)</b>	<b>Total</b>
<b>Assets at fair value:</b>					
Money market mutual funds	\$ 2,337,897	\$ —	\$ —	\$ —	\$ 2,337,897
<b>Total financial assets measured at fair value</b>	<b>\$ 2,337,897</b>	<b>\$ —</b>	<b>\$ —</b>	<b>\$ —</b>	<b>\$ 2,337,897</b>

B.

<b>March 31, 2026</b>	<b>Level 1</b>	<b>Level 2</b>	<b>Level 3</b>	<b>Net Asset Value (NAV)</b>	<b>Total</b>
<b>Liabilities at fair value:</b>					
<b>Total financial liabilities measured at fair value</b>	<b>\$ —</b>	<b>\$ —</b>	<b>\$ —</b>	<b>\$ —</b>	<b>\$ —</b>

2. Fair value measurements in Level 3 of the fair value hierarchy

## NOTES TO FINANCIAL STATEMENTS

- A. There are no financial assets carried at fair value in Level 3 of the fair value hierarchy as of March 31, 2026.
- B. There are no financial liabilities carried at fair value in Level 3 of the fair value hierarchy as of March 31, 2026.
3. Transfers between Levels are recognized at the beginning of each quarterly accounting period.
4. There are no fixed maturity securities held by the Company that are carried at fair value and classified as Level 2.
5. There are no derivative assets and liabilities as of March 31, 2026.

B. Other Fair Value Disclosures

Not Applicable.

C. Fair Values for All Financial Instruments by Levels 1, 2, 3

1. The estimated fair value and carrying amount of the Company's financial instruments are presented below:

	March 31, 2026		Fair Value Measurements Categorized as:				Not Practicable (Carrying Values)
	Aggregate Fair Value	Admitted Assets	Level 1	Level 2	Level 3	Net Asset Value (NAV)	
<b>Financial assets:</b>							
Bonds	\$ 10,471,035	\$ 10,619,745	\$ 4,147,666	\$ 6,323,369	\$ —	\$ —	\$ —
Cash and cash equivalents	2,800,957	2,800,957	2,800,957	—	—	—	—

The following methods and assumptions were used to estimate the fair value of each class of financial instruments for which it is practicable to estimate that value:

**Bonds**

The estimated fair value represent fair value as determined by using independent market sources, when available, and appropriate valuation methodologies when market quotes are not available. At March 31, 2026, 100% of the portfolio was valued using independent market sources.

**Cash and cash equivalents**

The fair values of cash equivalents are determined by using independent market sources. The fair values of cash approximates its bank balance.

D. Items for which Not Practicable to Estimate Fair Values

There are no classes of financial instruments where it isn't practicable to estimate the fair value as of March 31, 2026.

E. NAV Practical Expedient Investments

There are no investments that use NAV to estimate fair values as of March 31, 2026.

21. Other Items

No significant change from 2025 Notes to Financial Statements.

22. Events Subsequent

Pursuant to the Statement of Statutory Accounting Principles No. 9, "Subsequent Events", the date through which Type I or Type II subsequent events have been evaluated was May 15, 2026, the same date on which the Company's statements are issued.

There were no further events occurring subsequent to the three months ended March 31, 2026 that merited recognition or disclosure in these statements.

23. Reinsurance

No significant change from 2025 Notes to Financial Statements.

24. Retrospectively Rated Contracts and Contracts Subject to Redetermination

The Company does not issue retrospective rated contracts or contracts subject to redetermination; none of the Company's reinsurance contracts are retrospectively rated or subject to redetermination. The Company does not write accident and health insurance that is subject to the Affordable Care Act risk-sharing provisions.

25. Changes in Incurred Losses and Loss Adjustment Expenses

A. Loss and Loss Adjustment Expense Reserves as of March 31, 2026 attributable to insured events of prior years is \$8,000, a decrease of \$3,000 from December 31, 2025 primarily due to paid loss and loss expense activity during 2026. Estimates are continually reviewed and adjustments are reflected in the period determined.

B. Information about Significant Changes in Methodologies and Assumptions

Not Applicable.

26. Intercompany Pooling Arrangements

No significant change from 2025 Notes to Financial Statements.

---

## NOTES TO FINANCIAL STATEMENTS

---

27. Structured Settlements

No significant change from 2025 Notes to Financial Statements.

28. Health Care Receivables

No significant change from 2025 Notes to Financial Statements.

29. Participating Accident and Health Policies

No significant change from 2025 Notes to Financial Statements.

30. Premium Deficiency Reserves

No significant change from 2025 Notes to Financial Statements.

31. High Deductibles

No significant change from 2025 Notes to Financial Statements.

32. Discounting of Liabilities for Unpaid Losses or Unpaid Loss Adjustment Expenses

No significant change from 2025 Notes to Financial Statements.

33. Asbestos and Environmental Reserves

No significant change from 2025 Notes to Financial Statements.

34. Subscriber Savings Accounts

No significant change from 2025 Notes to Financial Statements.

35. Multiple Peril Crop Insurance

No significant change from 2025 Notes to Financial Statements.

36. Financial Guaranty

The Company does not have any financial guaranty policies outstanding at March 31, 2026.

STATEMENT AS OF MARCH 31, 2026 OF THE PROVIDENCE WASHINGTON INSURANCE COMPANY  
**GENERAL INTERROGATORIES**

**PART 1 - COMMON INTERROGATORIES**

**GENERAL**

- 1.1 Did the reporting entity experience any material transactions requiring the filing of Disclosure of Material Transactions with the State of Domicile, as required by the Model Act? ..... Yes [ ] No [ X ]
- 1.2 If yes, has the report been filed with the domiciliary state? ..... Yes [ ] No [ ]
- 2.1 Has any change been made during the year of this statement in the charter, by-laws, articles of incorporation, or deed of settlement of the reporting entity? ..... Yes [ ] No [ X ]
- 2.2 If yes, date of change: .....
- 3.1 Is the reporting entity a member of an Insurance Holding Company System consisting of two or more affiliated persons, one or more of which is an insurer? ..... Yes [ X ] No [ ]  
 If yes, complete Schedule Y, Parts 1 and 1A.
- 3.2 Have there been any substantial changes in the organizational chart since the prior quarter end? ..... Yes [ ] No [ X ]
- 3.3 If the response to 3.2 is yes, provide a brief description of those changes.  
 .....
- 3.4 Is the reporting entity publicly traded or a member of a publicly traded group? ..... Yes [ X ] No [ ]
- 3.5 If the response to 3.4 is yes, provide the CIK (Central Index Key) code issued by the SEC for the entity/group. .... 874501
- 4.1 Has the reporting entity been a party to a merger or consolidation during the period covered by this statement? ..... Yes [ ] No [ X ]
- 4.2 If yes, provide the name of the entity, NAIC Company Code, and state of domicile (use two letter state abbreviation) for any entity that has ceased to exist as a result of the merger or consolidation.

1 Name of Entity	2 NAIC Company Code	3 State of Domicile

5. If the reporting entity is subject to a management agreement, including third-party administrator(s), managing general agent(s), attorney-in-fact, or similar agreement, have there been any significant changes regarding the terms of the agreement or principals involved? ..... Yes [ ] No [ X ] N/A [ ]  
 If yes, attach an explanation.  
 .....
- 6.1 State as of what date the latest financial examination of the reporting entity was made or is being made. .... 12/31/2021
- 6.2 State the as of date that the latest financial examination report became available from either the state of domicile or the reporting entity. This date should be the date of the examined balance sheet and not the date the report was completed or released. .... 12/31/2021
- 6.3 State as of what date the latest financial examination report became available to other states or the public from either the state of domicile or the reporting entity. This is the release date or completion date of the examination report and not the date of the examination (balance sheet date). .... 05/31/2023
- 6.4 By what department or departments?  
 State of Rhode Island, Department of Business Regulation, Division of Insurance .....
- 6.5 Have all financial statement adjustments within the latest financial examination report been accounted for in a subsequent financial statement filed with Departments? ..... Yes [ ] No [ ] N/A [ X ]
- 6.6 Have all of the recommendations within the latest financial examination report been complied with? ..... Yes [ ] No [ ] N/A [ X ]
- 7.1 Has this reporting entity had any Certificates of Authority, licenses or registrations (including corporate registration, if applicable) suspended or revoked by any governmental entity during the reporting period? ..... Yes [ ] No [ X ]
- 7.2 If yes, give full information:  
 .....
- 8.1 Is the company a subsidiary of a bank holding company regulated by the Federal Reserve Board? ..... Yes [ ] No [ X ]
- 8.2 If response to 8.1 is yes, please identify the name of the bank holding company.  
 .....
- 8.3 Is the company affiliated with one or more banks, thrifts or securities firms? ..... Yes [ ] No [ X ]
- 8.4 If response to 8.3 is yes, please provide below the names and location (city and state of the main office) of any affiliates regulated by a federal regulatory services agency [i.e. the Federal Reserve Board (FRB), the Office of the Comptroller of the Currency (OCC), the Federal Deposit Insurance Corporation (FDIC) and the Securities Exchange Commission (SEC)] and identify the affiliate's primary federal regulator.

1 Affiliate Name	2 Location (City, State)	3 FRB	4 OCC	5 FDIC	6 SEC

STATEMENT AS OF MARCH 31, 2026 OF THE PROVIDENCE WASHINGTON INSURANCE COMPANY  
**GENERAL INTERROGATORIES**

- 9.1 Are the senior officers (principal executive officer, principal financial officer, principal accounting officer or controller, or persons performing similar functions) of the reporting entity subject to a code of ethics, which includes the following standards? ..... Yes  No   
 (a) Honest and ethical conduct, including the ethical handling of actual or apparent conflicts of interest between personal and professional relationships;  
 (b) Full, fair, accurate, timely and understandable disclosure in the periodic reports required to be filed by the reporting entity;  
 (c) Compliance with applicable governmental laws, rules and regulations;  
 (d) The prompt internal reporting of violations to an appropriate person or persons identified in the code; and  
 (e) Accountability for adherence to the code.
- 9.11 If the response to 9.1 is no, please explain:  
 .....
- 9.2 Has the code of ethics for senior managers been amended? ..... Yes  No
- 9.21 If the response to 9.2 is yes, provide information related to amendment(s).  
 .....
- 9.3 Have any provisions of the code of ethics been waived for any of the specified officers? ..... Yes  No
- 9.31 If the response to 9.3 is yes, provide the nature of any waiver(s).  
 .....

**FINANCIAL**

- 10.1 Does the reporting entity report any amounts due from parent, subsidiaries or affiliates on Page 2 of this statement? ..... Yes  No
- 10.2 If yes, indicate any amounts receivable from parent included in the Page 2 amount: ..... \$ .....

**INVESTMENT**

- 11.1 Were any of the stocks, bonds, or other assets of the reporting entity loaned, placed under option agreement, or otherwise made available for use by another person? (Exclude securities under securities lending agreements.) ..... Yes  No
- 11.2 If yes, give full and complete information relating thereto:  
 "The Company placed securities and cash on deposit with states with a carrying value of \$5,510,275. ....
12. Amount of real estate and mortgages held in other invested assets in Schedule BA: ..... \$ .....
- 13.1 Does the reporting entity have any investments in parent, subsidiaries and affiliates? ..... Yes  No
- 13.2 If yes, please complete the following:

	1 Prior Year-End Book/Adjusted Carrying Value	2 Current Quarter Book/Adjusted Carrying Value
13.21 Bonds .....	\$ .....0	\$ .....
13.22 Preferred Stock .....	\$ .....0	\$ .....
13.23 Common Stock .....	\$ .....0	\$ .....
13.24 Short-Term Investments .....	\$ .....	\$ .....
13.25 Mortgage Loans on Real Estate .....	\$ .....0	\$ .....
13.26 All Other .....	\$ .....0	\$ .....
13.27 Total Investment in Parent, Subsidiaries and Affiliates (Subtotal Lines 13.21 to 13.26) .....	\$ .....0	\$ .....0
13.28 Total Investment in Parent included in Lines 13.21 to 13.26 above .....	\$ .....	\$ .....

- 14.1 Has the reporting entity entered into any hedging transactions reported on Schedule DB? ..... Yes  No
- 14.2 If yes, has a comprehensive description of the hedging program been made available to the domiciliary state? ..... Yes  No  N/A   
 If no, attach a description with this statement.  
 .....
15. For the reporting entity's security lending program, state the amount of the following as of the current statement date:
- 15.1 Total fair value of reinvested collateral assets reported on Schedule DL, Parts 1 and 2 ..... \$ .....0
- 15.2 Total book/adjusted carrying value of reinvested collateral assets reported on Schedule DL, Parts 1 and 2 ..... \$ .....0
- 15.3 Total payable for securities lending reported on the liability page. .... \$ .....0

STATEMENT AS OF MARCH 31, 2026 OF THE PROVIDENCE WASHINGTON INSURANCE COMPANY  
**GENERAL INTERROGATORIES**

16. Excluding items in Schedule E - Part 3 - Special Deposits, real estate, mortgage loans and investments held physically in the reporting entity's offices, vaults or safety deposit boxes, were all stocks, bonds and other securities, owned throughout the current year held pursuant to a custodial agreement with a qualified bank or trust company in accordance with Section 1, III - General Examination Considerations, F. Outsourcing of Critical Functions, Custodial or Safekeeping Agreements of the NAIC Financial Condition Examiners Handbook? ..... Yes [ X ] No [ ]
- 16.1 For all agreements that comply with the requirements of the NAIC Financial Condition Examiners Handbook, complete the following:

1 Name of Custodian(s)	2 Custodian Address
Bank of New York Mellon .....	240 Greenwich Street, NY, NY 10286 .....

- 16.2 For all agreements that do not comply with the requirements of the NAIC Financial Condition Examiners Handbook, provide the name, location and a complete explanation:

1 Name(s)	2 Location(s)	3 Complete Explanation(s)

- 16.3 Have there been any changes, including name changes, in the custodian(s) identified in 16.1 during the current quarter? ..... Yes [ ] No [ X ]
- 16.4 If yes, give full information relating thereto:

1 Old Custodian	2 New Custodian	3 Date of Change	4 Reason

- 16.5 Investment management – Identify all investment advisors, investment managers, broker/dealers, including individuals that have the authority to make investment decisions on behalf of the reporting entity. This includes both primary and sub-advisors. For assets that are managed internally by employees of the reporting entity, note as such. ["...that have access to the investment accounts"; "...handle securities"]

1 Name of Firm or Individual	2 Affiliation
Goldman Sachs Asset Management, L.P. ....	U.....
David Trick .....	I.....
Susan Frances .....	I.....
Alexandra Zieminski .....	I.....
Christopher Dudonis .....	I.....

- 16.5097 For those firms/individuals listed in the table for Question 16.5, do any firms/individuals unaffiliated with the reporting entity (i.e. designated with a "U") manage more than 10% of the reporting entity's invested assets?..... Yes [ X ] No [ ] N/A [ ]

- 16.5098 For firms/individuals unaffiliated with the reporting entity (i.e. designated with a "U") listed in the table for Question 16.5, does the total assets under management aggregate to more than 50% of the reporting entity's invested assets?..... Yes [ ] No [ X ] N/A [ ]

- 16.6 For those firms or individuals listed in the table for 16.5 with an affiliation code of "A" (affiliated) or "U" (unaffiliated), provide the information for the table below.

1	2	3	4
Central Registration Depository Number	Name of Firm or Individual	Registered With	Investment Management Agreement (IMA) Filed
107738 .....	Goldman Sachs Asset Management, L.P. ....	SEC .....	DS.....

- 17.1 Have all the filing requirements of the Purposes and Procedures Manual of the NAIC Investment Analysis Office been followed? ..... Yes [ X ] No [ ]

- 17.2 If no, list exceptions:  
 .....

18. By self-designating 5GI securities, the reporting entity is certifying the following elements for each self-designated 5GI security:
- a. Documentation necessary to permit a full credit analysis of the security does not exist or an NAIC CRP credit rating for an FE or PL security is not available.
  - b. Issuer or obligor is current on all contracted interest and principal payments.
  - c. The insurer has an actual expectation of ultimate payment of all contracted interest and principal.

Has the reporting entity self-designated 5GI securities? ..... Yes [ ] No [ X ]

STATEMENT AS OF MARCH 31, 2026 OF THE PROVIDENCE WASHINGTON INSURANCE COMPANY  
**GENERAL INTERROGATORIES**

19. By self-designating PLGI securities, the reporting entity is certifying its compliance with the requirements as specified in the Purposes and Procedures Manual of the NAIC Investment Analysis Office (P&P Manual) for private letter rating (PLR) securities and the following elements of each self-designated PLGI security:
- a. The security was either:
    - i. issued prior to January 1, 2018 (which is exempt from PLR filing requirements pursuant to the P&P Manual), or
    - ii. issued from January 1, 2018 to December 31, 2021 and subject to a confidentiality agreement executed prior to January 1, 2022 which confidentiality agreement remains in force, for which an insurance company cannot provide a copy of a private letter rating rationale report to the SVO due to confidentiality or other contractual reasons ("waived submission PLR securities").
  - b. The reporting entity is holding capital commensurate with the NAIC Designation and NAIC Designation Category reported for the security.
  - c. The NAIC Designation and NAIC Designation Category were derived from the credit rating assigned by an NAIC CRP in its legal capacity as a NRSRO which is shown on a current private letter rating, dated during the financial statement year, held by the insurer and available for examination by state insurance regulators.
  - d. Other than for waived submission PLR securities, defined above, on or after January 1, 2024 for any PLR securities issued on or after January 1, 2022, if the reporting entity is not permitted to share this private credit rating or the private rating letter rationale report of the PL security with the SVO, it certifies that it is reporting it as an NAIC 5.B GI and may not assign any other self-designation.
- Has the reporting entity self-designated PLGI to securities, all of which meet the above requirement and as specified in the P&P Manual? ..... Yes [  ] No [  ]
20. By assigning FE to a Schedule BA non-registered private fund, the reporting entity is certifying the following elements of each self-designated FE fund:
- a. The shares were purchased prior to January 1, 2019.
  - b. The reporting entity is holding capital commensurate with the NAIC Designation reported for the security.
  - c. The security had a public credit rating(s) with annual surveillance assigned by an NAIC CRP in its legal capacity as an NRSRO prior to January 1, 2019.
  - d. The fund only or predominantly holds bonds in its portfolio.
  - e. The current reported NAIC Designation was derived from the public credit rating(s) with annual surveillance assigned by an NAIC CRP in its legal capacity as an NRSRO.
  - f. The public credit rating(s) with annual surveillance assigned by an NAIC CRP has not lapsed.
- Has the reporting entity assigned FE to Schedule BA non-registered private funds that complied with the above criteria? ..... Yes [  ] No [  ]

# GENERAL INTERROGATORIES

## PART 2 - PROPERTY & CASUALTY INTERROGATORIES

1. If the reporting entity is a member of a pooling arrangement, did the agreement or the reporting entity's participation change? ..... Yes [ ] No [ ] N/A [ X ]  
 If yes, attach an explanation.

2. Has the reporting entity reinsured any risk with any other reporting entity and agreed to release such entity from liability, in whole or in part, from any loss that may occur on the risk, or portion thereof, reinsured? ..... Yes [ ] No [ X ]  
 If yes, attach an explanation.

3.1 Have any of the reporting entity's primary reinsurance contracts been canceled? ..... Yes [ ] No [ X ]

3.2 If yes, give full and complete information thereto.

4.1 Are any of the liabilities for unpaid losses and loss adjustment expenses other than certain workers' compensation tabular reserves (see Annual Statement Instructions pertaining to disclosure of discounting for definition of "tabular reserves") discounted at a rate of interest greater than zero? ..... Yes [ ] No [ X ]

4.2 If yes, complete the following schedule:

1 Line of Business	2 Maximum Interest	3 Discount Rate	TOTAL DISCOUNT				DISCOUNT TAKEN DURING PERIOD			
			4 Unpaid Losses	5 Unpaid LAE	6 IBNR	7 TOTAL	8 Unpaid Losses	9 Unpaid LAE	10 IBNR	11 TOTAL
TOTAL			0	0	0	0	0	0	0	0

5. Operating Percentages:

5.1 A&H loss percent ..... %

5.2 A&H cost containment percent ..... %

5.3 A&H expense percent excluding cost containment expenses ..... %

6.1 Do you act as a custodian for health savings accounts? ..... Yes [ ] No [ X ]

6.2 If yes, please provide the amount of custodial funds held as of the reporting date ..... \$.....

6.3 Do you act as an administrator for health savings accounts? ..... Yes [ ] No [ X ]

6.4 If yes, please provide the balance of the funds administered as of the reporting date ..... \$.....

7. Is the reporting entity licensed or chartered, registered, qualified, eligible or writing business in at least two states? ..... Yes [ X ] No [ ]

7.1 If no, does the reporting entity assume reinsurance business that covers risks residing in at least one state other than the state of domicile of the reporting entity? ..... Yes [ ] No [ ]

**SCHEDULE F - CEDED REINSURANCE**

Showing All New Reinsurers - Current Year to Date

1 NAIC Company Code	2 ID Number	3 Name of Reinsurer	4 Domiciliary Jurisdiction	5 Type of Reinsurer	6 Certified Reinsurer Rating (1 through 6)	7 Effective Date of Certified Reinsurer Rating
<b>NONE</b>						

STATEMENT AS OF MARCH 31, 2026 OF THE PROVIDENCE WASHINGTON INSURANCE COMPANY

**SCHEDULE T - EXHIBIT OF PREMIUMS WRITTEN**

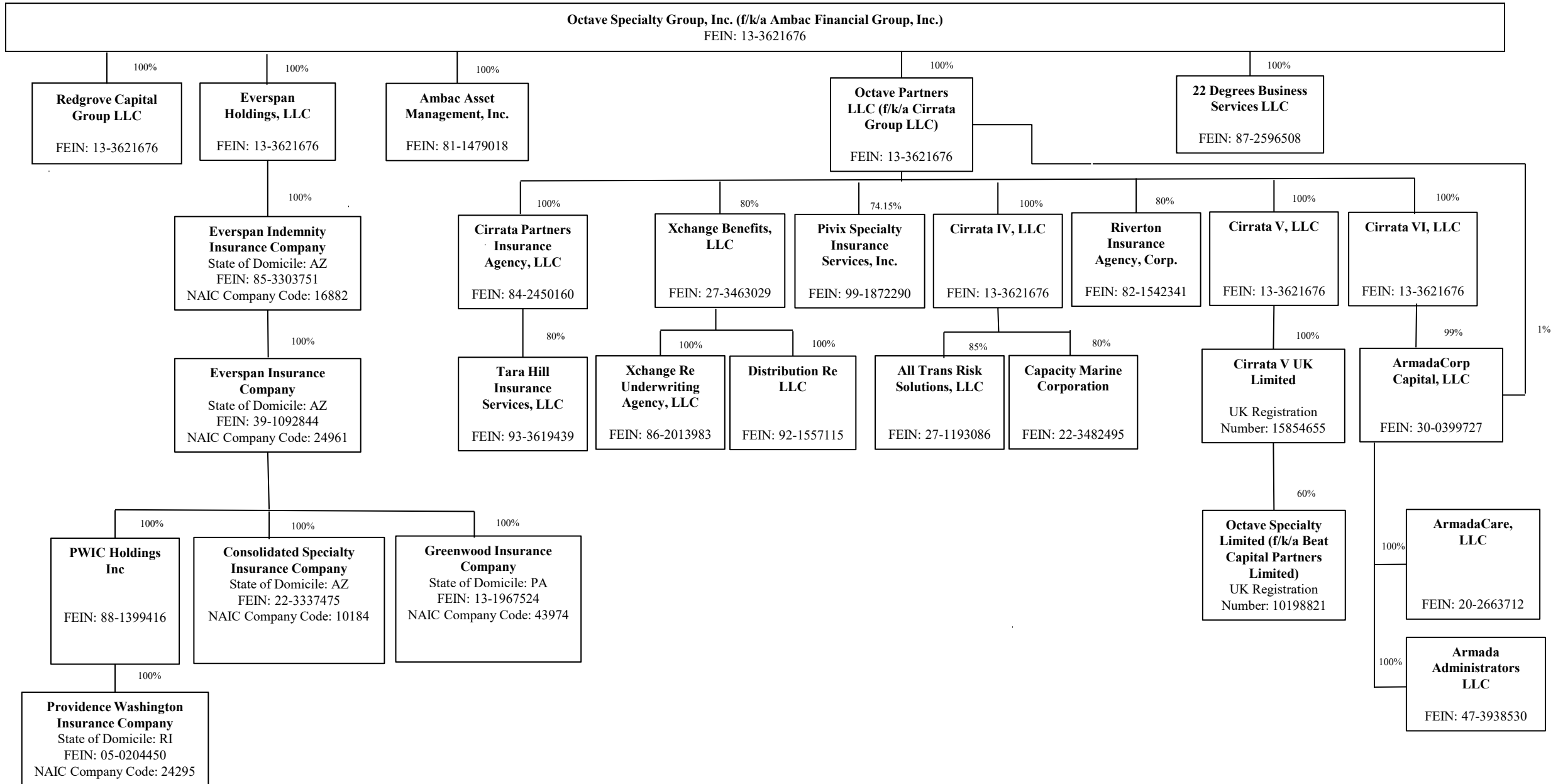
Current Year to Date - Allocated by States and Territories

States, etc.	1 Active Status (a)	Direct Premiums Written		Direct Losses Paid (Deducting Salvage)		Direct Losses Unpaid	
		2 Current Year To Date	3 Prior Year To Date	4 Current Year To Date	5 Prior Year To Date	6 Current Year To Date	7 Prior Year To Date
1. Alabama	AL	0	0	0	0	0	0
2. Alaska	AK	0	0	0	0	0	0
3. Arizona	AZ	0	0	4,425	3,383	91,210	(525,033)
4. Arkansas	AR	0	0	0	0	0	0
5. California	CA	2,308	0	48,385	4,722	3,814,180	23,098,175
6. Colorado	CO	0	0	138	0	105,359	(394,576)
7. Connecticut	CT	13,131	0	2,939	0	9,394	0
8. Delaware	DE	1,653	0	0	0	173	0
9. District of Columbia	DC	2,160	0	0	0	226	0
10. Florida	FL	127	0	0	0	0	0
11. Georgia	GA	747	0	0	0	2,148	0
12. Hawaii	HI	0	0	0	0	0	0
13. Idaho	ID	1,568	0	0	0	93,415	(361,148)
14. Illinois	IL	2,627	1,896	0	0	2,231	(852,280)
15. Indiana	IN	747	0	0	0	105	0
16. Iowa	IA	0	0	0	0	0	0
17. Kansas	KS	5,844	0	0	0	621	0
18. Kentucky	KY	0	0	0	0	0	0
19. Louisiana	LA	0	0	0	0	0	0
20. Maine	ME	0	0	0	0	252	0
21. Maryland	MD	950	0	0	0	693	0
22. Massachusetts	MA	2,246	1,912	0	0	1,882	244
23. Michigan	MI	2,190	0	0	0	256	0
24. Minnesota	MN	98,246	0	652	0	66,668	0
25. Mississippi	MS	0	0	0	0	0	0
26. Missouri	MO	0	0	0	0	0	0
27. Montana	MT	0	0	0	0	0	0
28. Nebraska	NE	0	0	0	0	444	0
29. Nevada	NV	0	0	0	0	519	0
30. New Hampshire	NH	0	0	0	0	0	0
31. New Jersey	NJ	1,859	410	(4,035)	(16,700)	(3,981)	(219,785)
32. New Mexico	NM	0	0	0	0	0	0
33. New York	NY	15,793	0	544,751	78,159	2,033,563	(1,360,545)
34. North Carolina	NC	1,710	0	0	0	132	0
35. North Dakota	ND	0	0	0	0	0	0
36. Ohio	OH	831	889	0	0	764	141
37. Oklahoma	OK	0	0	0	0	0	0
38. Oregon	OR	974	0	0	0	418	0
39. Pennsylvania	PA	0	1,107	0	0	1,195	2,191
40. Rhode Island	RI	0	0	0	0	374	0
41. South Carolina	SC	444	0	0	0	362	0
42. South Dakota	SD	0	0	0	0	609	0
43. Tennessee	TN	0	0	0	0	0	0
44. Texas	TX	3,849	1,674	0	0	36,712	1,279,387
45. Utah	UT	0	0	0	0	11,411	23,601
46. Vermont	VT	0	0	0	0	0	0
47. Virginia	VA	0	0	0	0	3,710	0
48. Washington	WA	0	0	182,730	44,971	11,273,495	10,742,772
49. West Virginia	WV	0	0	0	0	20,000	0
50. Wisconsin	WI	0	0	0	0	181	0
51. Wyoming	WY	0	0	0	0	0	0
52. American Samoa	AS	0	0	0	0	0	0
53. Guam	GU	0	0	0	0	0	0
54. Puerto Rico	PR	0	0	0	0	0	0
55. U.S. Virgin Islands	VI	0	0	0	0	0	0
56. Northern Mariana Islands	MP	0	0	0	0	0	0
57. Canada	CAN	0	0	0	0	0	0
58. Aggregate other alien	OT	0	0	0	0	0	0
59. Totals	XXX	160,004	7,888	779,985	114,535	17,568,721	31,433,144
DETAILS OF WRITE-INS							
58001.	XXX						
58002.	XXX						
58003.	XXX						
58998. Summary of remaining write-ins for Line 58 from overflow page	XXX	0	0	0	0	0	0
58999. Totals (Lines 58001 through 58003 plus 58998)(Line 58 above)	XXX	0	0	0	0	0	0

(a) Active Status Counts:

- |                                                                                                                                                     |    |                                                                                                                                    |   |
|-----------------------------------------------------------------------------------------------------------------------------------------------------|----|------------------------------------------------------------------------------------------------------------------------------------|---|
| 1. L - Licensed or Chartered - Licensed insurance carrier or domiciled RRG.....                                                                     | 48 | 4. Q - Qualified - Qualified or accredited reinsurer.....                                                                          | 0 |
| 2. R - Registered - Non-domiciled RRGs.....                                                                                                         | 0  | 5. D - Domestic Surplus Lines Insurer (DSLII) - Reporting entities authorized to write surplus lines in the state of domicile..... | 0 |
| 3. E - Eligible - Reporting entities eligible or approved to write surplus lines in the state (other than their state of domicile - see DSLII)..... | 0  | 6. N - None of the above - Not allowed to write business in the state.....                                                         | 9 |
- Premiums based on location of risk or policyholder.

**SCHEDULE Y - INFORMATION CONCERNING ACTIVITIES OF INSURER MEMBERS OF A HOLDING COMPANY GROUP**  
**PART 1 - ORGANIZATIONAL CHART**



STATEMENT AS OF MARCH 31, 2026 OF THE PROVIDENCE WASHINGTON INSURANCE COMPANY

**SCHEDULE Y**

**PART 1A - DETAILS OF INSURANCE HOLDING COMPANY SYSTEM**

1	2	3	4	5	6	7	8	9	10	11	12	13	14	15	16
Group Code	Group Name	NAIC Company Code	ID Number	Federal RSSD	CIK	Name of Securities Exchange if Publicly Traded (U.S. or International)	Names of Parent, Subsidiaries Or Affiliates	Domiciliary Location	Relationship to Reporting Entity	Directly Controlled by (Name of Entity/Person)	Type of Control (Ownership, Board, Management, Attorney-in-Fact, Influence, Other)	If Control is Ownership Provide Percentage	Ultimate Controlling Entity(ies)/Person(s)	Is an SCA Filing Required? (Yes/No)	*
			13-3621676		874501	NYSE	Octave Specialty Grpup, Inc. (f/k/a Ambac Financial Group, Inc.)	DE	UIP					NO	
1248	Ambac Financial Group	24961	39-1092844				Everspan Insurance Company	AZ	UDP	Everspan Indemnity Insurance Company	Ownership	100.000	Octave Specialty Grpup, Inc. (f/k/a Ambac Financial Group, Inc.)	NO	
1248	Ambac Financial Group	16882	85-3303751				Everspan Indemnity Insurance Company	AZ	UIP	Everspan Holdings, LLC	Ownership	100.000	Octave Specialty Grpup, Inc. (f/k/a Ambac Financial Group, Inc.)	NO	
			88-1399416				PWIC Holdings Inc	DE	NIA	Everspan Insurance Company	Ownership	100.000	Octave Specialty Grpup, Inc. (f/k/a Ambac Financial Group, Inc.)	YES	
1248	Ambac Financial Group	43974	13-1967524				Greenwood Insurance Company	PA	IA	Everspan Insurance Company	Ownership	100.000	Octave Specialty Grpup, Inc. (f/k/a Ambac Financial Group, Inc.)	NO	
1248	Ambac Financial Group	10184	22-3337475				Consolidated Specialty Insurance Company	AZ	IA	Everspan Insurance Company	Ownership	100.000	Octave Specialty Grpup, Inc. (f/k/a Ambac Financial Group, Inc.)	NO	
1248	Ambac Financial Group	24295	05-0204450				Providence Washington Insurance Company	RI	RE	PWIC Holdings Inc	Ownership	100.000	Octave Specialty Grpup, Inc. (f/k/a Ambac Financial Group, Inc.)	NO	
			13-3621676				Everspan Holdings, LLC	DE	UIP	Octave Specialty Grpup, Inc. (f/k/a Ambac Financial Group, Inc.)	Ownership	100.000	Octave Specialty Grpup, Inc. (f/k/a Ambac Financial Group, Inc.)	NO	
			13-3621676				Redgrove Capital Group LLC	DE	NIA	Octave Specialty Grpup, Inc. (f/k/a Ambac Financial Group, Inc.)	Ownership	100.000	Octave Specialty Grpup, Inc. (f/k/a Ambac Financial Group, Inc.)	NO	
			81-1479018				Ambac Asset Management, Inc.	DE	NIA	Octave Specialty Grpup, Inc. (f/k/a Ambac Financial Group, Inc.)	Ownership	100.000	Octave Specialty Grpup, Inc. (f/k/a Ambac Financial Group, Inc.)	NO	
			87-2596508				22 Degrees Business Services LLC	DE	NIA	Octave Specialty Grpup, Inc. (f/k/a Ambac Financial Group, Inc.)	Ownership	100.000	Octave Specialty Grpup, Inc. (f/k/a Ambac Financial Group, Inc.)	NO	
			13-3621676				Octave Partners LLC (f/k/a Cirrata Group LLC)	DE	NIA	Octave Specialty Grpup, Inc. (f/k/a Ambac Financial Group, Inc.)	Ownership	100.000	Octave Specialty Grpup, Inc. (f/k/a Ambac Financial Group, Inc.)	NO	
			84-2450160				Cirrata Partners Insurance Agency LLC	DE	NIA	Octave Partners LLC (f/k/a Cirrata Group LLC)	Ownership	100.000	Octave Specialty Grpup, Inc. (f/k/a Ambac Financial Group, Inc.)	NO	
			93-3619439				Tara Hill Insurance Services, LLC	DE	NIA	Cirrata Partners Insurance Agency LLC	Ownership	80.000	Octave Specialty Grpup, Inc. (f/k/a Ambac Financial Group, Inc.)	NO	
			13-3621676				Cirrata V, LLC	DE	NIA	Octave Partners LLC (f/k/a Cirrata Group LLC)	Ownership	100.000	Octave Specialty Grpup, Inc. (f/k/a Ambac Financial Group, Inc.)	NO	
			82-1542341				Riverton Insurance Agency, Corp.	NJ	NIA	Octave Partners LLC (f/k/a Cirrata Group LLC)	Ownership	80.000	Octave Specialty Grpup, Inc. (f/k/a Ambac Financial Group, Inc.)	NO	
			13-3621676				Cirrata IV, LLC	DE	NIA	Octave Partners LLC (f/k/a Cirrata Group LLC)	Ownership	100.000	Octave Specialty Grpup, Inc. (f/k/a Ambac Financial Group, Inc.)	NO	
			27-1193086				All Trans Risk Solutions, LLC	NJ	NIA	Cirrata IV, LLC	Ownership	85.000	Octave Specialty Grpup, Inc. (f/k/a Ambac Financial Group, Inc.)	NO	
			22-3482495				Capacity Marine Corporation	NJ	NIA	Cirrata IV, LLC	Ownership	80.000	Octave Specialty Grpup, Inc. (f/k/a Ambac Financial Group, Inc.)	NO	
			27-3463029				Xchange Benefits, LLC	DE	NIA	Octave Partners LLC (f/k/a Cirrata Group LLC)	Ownership	80.000	Octave Specialty Grpup, Inc. (f/k/a Ambac Financial Group, Inc.)	NO	
			86-2013983				Xchange Re Underwriting Agency, LLC	DE	NIA	Xchange Benefits, LLC	Ownership	100.000	Octave Specialty Grpup, Inc. (f/k/a Ambac Financial Group, Inc.)	NO	
			92-1557115				Distribution Re LLC	TN	NIA	Xchange Benefits, LLC	Ownership	100.000	Octave Specialty Grpup, Inc. (f/k/a Ambac Financial Group, Inc.)	NO	
							Octave Specialty Limited (f/k/a Beat Capital Partners Limited)	GBR	NIA	Cirrata V UK Limited	Ownership	60.000	Octave Specialty Grpup, Inc. (f/k/a Ambac Financial Group, Inc.)	NO	
							Cirrata V UK Limited	GBR	NIA	Cirrata V, LLC	Ownership	100.000	Octave Specialty Grpup, Inc. (f/k/a Ambac Financial Group, Inc.)	NO	
			99-1872290				Pivix Specialty Insurance Services, Inc.	AZ	NIA	Octave Partners LLC (f/k/a Cirrata Group LLC)	Ownership	74.150	Octave Specialty Grpup, Inc. (f/k/a Ambac Financial Group, Inc.)	NO	
			13-3621676				Cirrata VI, LLC	DE	NIA	Octave Partners LLC (f/k/a Cirrata Group LLC)	Ownership	100.000	Octave Specialty Grpup, Inc. (f/k/a Ambac Financial Group, Inc.)	NO	

STATEMENT AS OF MARCH 31, 2026 OF THE PROVIDENCE WASHINGTON INSURANCE COMPANY

**SCHEDULE Y**

**PART 1A - DETAILS OF INSURANCE HOLDING COMPANY SYSTEM**

1	2	3	4	5	6	7	8	9	10	11	12	13	14	15	16
Group Code	Group Name	NAIC Company Code	ID Number	Federal RSSD	CIK	Name of Securities Exchange if Publicly Traded (U.S. or International)	Names of Parent, Subsidiaries Or Affiliates	Domiciliary Location	Relationship to Reporting Entity	Directly Controlled by (Name of Entity/Person)	Type of Control (Ownership, Board, Management, Attorney-in-Fact, Influence, Other)	If Control is Ownership Provide Percentage	Ultimate Controlling Entity(ies)/Person(s)	Is an SCA Filing Required? (Yes/No)	*
.....	.....	.....	30-0399727 ..	.....	.....	.....	ArmadaCorp Capital, LLC .....	.. MD.....	..... NIA.....	Cirrata VI, LLC .....	Ownership.....	99.000 .....	Octave Specialty Grpup, Inc. (f/k/a Ambac Financial Group, Inc.) .....	.... NO.....	.....
.....	.....	.....	30-0399727 ..	.....	.....	.....	ArmadaCorp Capital, LLC .....	.. MD.....	..... NIA.....	Octave Partners LLC (f/k/a Cirrata Group LLC) .....	Ownership.....	1.000 .....	Octave Specialty Grpup, Inc. (f/k/a Ambac Financial Group, Inc.) .....	.... NO.....	.....
.....	.....	.....	20-2663712 ..	.....	.....	.....	ArmadaCare, LLC .....	.. MD.....	..... NIA.....	ArmadaCorp Capital, LLC .....	Ownership.....	100.000 .....	Octave Specialty Grpup, Inc. (f/k/a Ambac Financial Group, Inc.) .....	.... NO.....	.....
.....	.....	.....	47-3938530 ..	.....	.....	.....	Armada Administrators, LLC .....	.. MD.....	..... NIA.....	ArmadaCorp Capital, LLC .....	Ownership.....	100.000 .....	Octave Specialty Grpup, Inc. (f/k/a Ambac Financial Group, Inc.) .....	.... NO.....	.....

Asterisk	Explanation

STATEMENT AS OF MARCH 31, 2026 OF THE PROVIDENCE WASHINGTON INSURANCE COMPANY

**PART 1 - LOSS EXPERIENCE**

Line of Business	Current Year to Date			4 Prior Year to Date Direct Loss Percentage
	1 Direct Premiums Earned	2 Direct Losses Incurred	3 Direct Loss Percentage	
1. Fire .....	0	0	0.0	0.0
2.1 Allied Lines .....	0	0	0.0	0.0
2.2 Multiple peril crop .....	0	0	0.0	0.0
2.3 Federal flood .....	0	0	0.0	0.0
2.4 Private crop .....	0	0	0.0	0.0
2.5 Private flood .....	0	0	0.0	0.0
3. Farmowners multiple peril .....	0	0	0.0	0.0
4. Homeowners multiple peril .....	0	0	0.0	0.0
5.1 Commercial multiple peril (non-liability portion) .....	5,800	(6,046)	(104.2)	0.0
5.2 Commercial multiple peril (liability portion) .....	42,398	4,417	10.4	0.0
6. Mortgage guaranty .....	0	0	0.0	0.0
8. Ocean marine .....	0	0	0.0	0.0
9.1 Inland marine .....	0	0	0.0	0.0
9.2 Pet insurance .....	44,116	19,411	44.0	0.0
10. Financial guaranty .....	0	0	0.0	0.0
11.1 Medical professional liability - occurrence .....	0	0	0.0	0.0
11.2 Medical professional liability - claims-made .....	0	0	0.0	0.0
12. Earthquake .....	0	0	0.0	0.0
13.1 Comprehensive (hospital and medical) individual .....	0	0	0.0	0.0
13.2 Comprehensive (hospital and medical) group .....	0	0	0.0	0.0
14. Credit accident and health .....	0	0	0.0	0.0
15.1 Vision only .....	0	0	0.0	0.0
15.2 Dental only .....	0	0	0.0	0.0
15.3 Disability income .....	0	0	0.0	0.0
15.4 Medicare supplement .....	0	0	0.0	0.0
15.5 Medicaid Title XIX .....	0	0	0.0	0.0
15.6 Medicare Title XVIII .....	0	0	0.0	0.0
15.7 Long-term care .....	0	0	0.0	0.0
15.8 Federal employees health benefits plan .....	0	0	0.0	0.0
15.9 Other health .....	0	0	0.0	0.0
16. Workers' compensation .....	0	(1,317)	0.0	0.0
17.1 Other liability - occurrence .....	0	(132,393)	0.0	0.0
17.2 Other liability - claims-made .....	35,282	16,876	47.8	64.2
17.3 Excess workers' compensation .....	0	0	0.0	0.0
18.1 Products liability - occurrence .....	0	2,116	0.0	0.0
18.2 Products liability - claims-made .....	0	0	0.0	0.0
19.1 Private passenger auto no-fault (personal injury protection) .....	0	0	0.0	0.0
19.2 Other private passenger auto liability .....	0	0	0.0	0.0
19.3 Commercial auto no-fault (personal injury protection) .....	0	0	0.0	0.0
19.4 Other commercial auto liability .....	0	0	0.0	0.0
21.1 Private passenger auto physical damage .....	0	0	0.0	0.0
21.2 Commercial auto physical damage .....	0	0	0.0	0.0
22. Aircraft (all perils) .....	0	0	0.0	0.0
23. Fidelity .....	0	0	0.0	0.0
24. Surety .....	0	0	0.0	0.0
26. Burglary and theft .....	0	0	0.0	0.0
27. Boiler and machinery .....	0	0	0.0	0.0
28. Credit .....	0	0	0.0	0.0
29. International .....	0	0	0.0	0.0
30. Warranty .....	0	0	0.0	0.0
31. Reinsurance - nonproportional assumed property .....	XXX	XXX	XXX	XXX
32. Reinsurance - nonproportional assumed liability .....	XXX	XXX	XXX	XXX
33. Reinsurance - nonproportional assumed financial lines .....	XXX	XXX	XXX	XXX
34. Aggregate write-ins for other lines of business .....	0	0	0.0	0.0
35. Totals .....	127,596	(96,936)	(76.0)	(5,769.8)
<b>DETAILS OF WRITE-INS</b>				
3401. ....			0.0	0.0
3402. ....				
3403. ....				
3498. Summary of remaining write-ins for Line 34 from overflow page .....	0	0	0.0	0.0
3499. Totals (Lines 3401 through 3403 plus 3498)(Line 34 above) .....	0	0	0.0	0.0

STATEMENT AS OF MARCH 31, 2026 OF THE PROVIDENCE WASHINGTON INSURANCE COMPANY

**PART 2 - DIRECT PREMIUMS WRITTEN**

Line of Business		1 Current Quarter	2 Current Year to Date	3 Prior Year Year to Date
1.	Fire .....	0	0	0
2.1	Allied Lines .....	0	0	0
2.2	Multiple peril crop .....	0	0	0
2.3	Federal flood .....	0	0	0
2.4	Private crop .....	0	0	0
2.5	Private flood .....	0	0	0
3.	Farmowners multiple peril .....	0	0	0
4.	Homeowners multiple peril .....	0	0	0
5.1	Commercial multiple peril (non-liability portion) .....	5,763	5,763	0
5.2	Commercial multiple peril (liability portion) .....	76,321	76,321	0
6.	Mortgage guaranty .....	0	0	0
8.	Ocean marine .....	0	0	0
9.1	Inland marine .....	0	0	0
9.2	Pet insurance .....	33,203	33,203	0
10.	Financial guaranty .....	0	0	0
11.1	Medical professional liability - occurrence .....	0	0	0
11.2	Medical professional liability - claims-made .....	0	0	0
12.	Earthquake .....	0	0	0
13.1	Comprehensive (hospital and medical) individual .....	0	0	0
13.2	Comprehensive (hospital and medical) group .....	0	0	0
14.	Credit accident and health .....	0	0	0
15.1	Vision only .....	0	0	0
15.2	Dental only .....	0	0	0
15.3	Disability income .....	0	0	0
15.4	Medicare supplement .....	0	0	0
15.5	Medicaid Title XIX .....	0	0	0
15.6	Medicare Title XVIII .....	0	0	0
15.7	Long-term care .....	0	0	0
15.8	Federal employees health benefits plan .....	0	0	0
15.9	Other health .....	0	0	0
16.	Workers' compensation .....	0	0	0
17.1	Other liability - occurrence .....	0	0	0
17.2	Other liability - claims-made .....	44,717	44,717	7,888
17.3	Excess workers' compensation .....	0	0	0
18.1	Products liability - occurrence .....	0	0	0
18.2	Products liability - claims-made .....	0	0	0
19.1	Private passenger auto no-fault (personal injury protection) .....	0	0	0
19.2	Other private passenger auto liability .....	0	0	0
19.3	Commercial auto no-fault (personal injury protection) .....	0	0	0
19.4	Other commercial auto liability .....	0	0	0
21.1	Private passenger auto physical damage .....	0	0	0
21.2	Commercial auto physical damage .....	0	0	0
22.	Aircraft (all perils) .....	0	0	0
23.	Fidelity .....	0	0	0
24.	Surety .....	0	0	0
26.	Burglary and theft .....	0	0	0
27.	Boiler and machinery .....	0	0	0
28.	Credit .....	0	0	0
29.	International .....	0	0	0
30.	Warranty .....	0	0	0
31.	Reinsurance - nonproportional assumed property .....	XXX	XXX	XXX
32.	Reinsurance - nonproportional assumed liability .....	XXX	XXX	XXX
33.	Reinsurance - nonproportional assumed financial lines .....	XXX	XXX	XXX
34.	Aggregate write-ins for other lines of business .....	0	0	0
35.	Totals	160,004	160,004	7,888
<b>DETAILS OF WRITE-INS</b>				
3401.	.....			
3402.	.....			
3403.	.....			
3498.	Summary of remaining write-ins for Line 34 from overflow page .....	0	0	0
3499.	Totals (Lines 3401 through 3403 plus 3498)(Line 34 above)	0	0	0

STATEMENT AS OF MARCH 31, 2026 OF THE PROVIDENCE WASHINGTON INSURANCE COMPANY

**PART 3 (\$000 OMITTED)**

LOSS AND LOSS ADJUSTMENT EXPENSE RESERVES SCHEDULE

	1	2	3	4	5	6	7	8	9	10	11	12	13	
Years in Which Losses Occurred	Prior Year-End Known Case Loss and LAE Reserves	Prior Year-End IBNR Loss and LAE Reserves	Total Prior Year-End Loss and LAE Reserves (Cols. 1+2)	2026 Loss and LAE Payments on Claims Reported as of Prior Year-End	2026 Loss and LAE Payments on Claims Unreported as of Prior Year-End	Total 2026 Loss and LAE Payments (Cols. 4+5)	Q.S. Date Known Case Loss and LAE Reserves on Claims Reported and Open as of Prior Year End	Q.S. Date Known Case Loss and LAE Reserves on Claims Reported or Reopened Subsequent to Prior Year End	Q.S. Date IBNR Loss and LAE Reserves	Total Q.S. Loss and LAE Reserves (Cols.7+8+9)	Prior Year-End Known Case Loss and LAE Reserves Developed (Savings)/ Deficiency (Cols.4+7 minus Col. 1)	Prior Year-End IBNR Loss and LAE Reserves Developed (Savings)/ Deficiency (Cols. 5+8+9 minus Col. 2)	Prior Year-End Total Loss and LAE Reserve Developed (Savings)/ Deficiency (Cols. 11+12)	
1. 2023 + Prior .....	0	0	0	0	0	0	0	0	0	0	0	0	0	
2. 2024 .....	0	0	0	0	0	0	0	0	0	0	0	0	0	
3. Subtotals 2024 + Prior .....	0	0	0	0	0	0	0	0	0	0	0	0	0	
4. 2025 .....	1	10	11	0	3	3	0	2	6	8	(1)	1	0	
5. Subtotals 2025 + Prior .....	1	10	11	0	3	3	0	2	6	8	(1)	1	0	
6. 2026 .....	XXX	XXX	XXX	XXX	2	2	XXX	0	3	3	XXX	XXX	XXX	
7. Totals .....	1	10	11	0	5	5	0	2	9	11	(1)	1	0	
8. Prior year-end surplus as regards policyholders	13,096											Col. 11, Line 7 As % of Col. 1 Line 7	Col. 12, Line 7 As % of Col. 2 Line 7	Col. 13, Line 7 As % of Col. 3 Line 7
												1. (100.0)	2. 10.0	3. 0.0
												Col. 13, Line 7 As a % of Col. 1 Line 8		
												4. 0.0		

# SUPPLEMENTAL EXHIBITS AND SCHEDULES INTERROGATORIES

The following supplemental reports are required to be filed as part of your statement filing. However, in the event that your company does not transact the type of business for which the special report must be filed, your response of NO to the specific interrogatory will be accepted in lieu of filing a "NONE" report and a bar code will be printed below. If the supplement is required of your company but is not being filed for whatever reason enter SEE EXPLANATION and provide an explanation following the interrogatory questions.

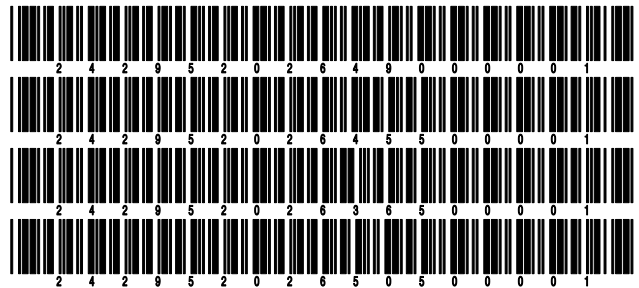
	Response
1. Will the Trusteed Surplus Statement be filed with the state of domicile and the NAIC with this statement? .....	NO
2. Will Supplement A to Schedule T (Medical Professional Liability Supplement) be filed with this statement? .....	NO
3. Will the Medicare Part D Coverage Supplement be filed with the state of domicile and the NAIC with this statement? .....	NO
4. Will the Director and Officer Insurance Coverage Supplement be filed with the state of domicile and the NAIC with this statement? .....	NO
<b>AUGUST FILING</b>	
5. Will the regulator-only (non-public) Communication of Internal Control Related Matters Noted in Audit be filed with the state of domicile and electronically with the NAIC (as a regulator-only non-public document) by August 1? The response for 1st and 3rd quarters should be N/A. A NO response resulting with a bar code is only appropriate in the 2nd quarter. ....	N/A

Explanations:

- 1.
- 2.
- 3.
- 4.

Bar Codes:

1. Trusteed Surplus Statement [Document Identifier 490]
2. Supplement A to Schedule T [Document Identifier 455]
3. Medicare Part D Coverage Supplement [Document Identifier 365]
4. Director and Officer Supplement [Document Identifier 505]



**NONE**

STATEMENT AS OF MARCH 31, 2026 OF THE PROVIDENCE WASHINGTON INSURANCE COMPANY

**SCHEDULE A - VERIFICATION**

Real Estate

	1 Year to Date	2 Prior Year Ended December 31
1. Book/adjusted carrying value, December 31 of prior year .....		
2. Cost of acquired:		
2.1 Actual cost at time of acquisition .....		
2.2 Additional investment made after acquisition .....		
3. Current year change in encumbrances .....		
4. Total gain (loss) on disposals .....		
5. Deduct amounts received on disposals .....		
6. Total foreign exchange change in book/adjusted carrying value .....		
7. Deduct current year's other than temporary impairment recognized .....		
8. Deduct current year's depreciation .....		
9. Book/adjusted carrying value at the end of current period (Lines 1+2+3+4-5+6-7-8) .....		
10. Deduct total nonadmitted amounts .....		
11. Statement value at end of current period (Line 9 minus Line 10)		

**NONE**

**SCHEDULE B - VERIFICATION**

Mortgage Loans

	1 Year to Date	2 Prior Year Ended December 31
1. Book value/recorded investment excluding accrued interest, December 31 of prior year .....		
2. Cost of acquired:		
2.1 Actual cost at time of acquisition .....		
2.2 Additional investment made after acquisition .....		
3. Capitalized deferred interest and other .....		
4. Accrual of discount .....		
5. Unrealized valuation increase/(decrease) .....		
6. Total gain (loss) on disposals .....		
7. Deduct amounts received on disposals .....		
8. Deduct amortization of premium and mortgage interest paid and commitment fees .....		
9. Total foreign exchange change in book value/recorded investment excluding accrued interest .....		
10. Deduct current year's other than temporary impairment recognized .....		
11. Book value/recorded investment excluding accrued interest at end of current period (Lines 1+2+3+4+5+6-7-8+9-10) .....		
12. Total valuation allowance .....		
13. Subtotal (Line 11 plus Line 12) .....		
14. Deduct total nonadmitted amounts .....		
15. Statement value at end of current period (Line 13 minus Line 14)		

**NONE**

**SCHEDULE BA - VERIFICATION**

Other Long-Term Invested Assets

	1 Year to Date	2 Prior Year Ended December 31
1. Book/adjusted carrying value, December 31 of prior year .....		
2. Cost of acquired:		
2.1 Actual cost at time of acquisition .....		
2.2 Additional investment made after acquisition .....		
3. Capitalized deferred interest and other .....		
4. Accrual of discount .....		
5. Unrealized valuation increase/(decrease) .....		
6. Total gain (loss) on disposals .....		
7. Deduct amounts received on disposals .....		
8. Deduct amortization of premium, depreciation and proportional amortization .....		
9. Total foreign exchange change in book/adjusted carrying value .....		
10. Deduct current year's other than temporary impairment recognized .....		
11. Book/adjusted carrying value at end of current period (Lines 1+2+3+4+5+6-7-8+9-10) .....		
12. Deduct total nonadmitted amounts .....		
13. Statement value at end of current period (Line 11 minus Line 12)		

**NONE**

**SCHEDULE D - VERIFICATION**

Bonds and Stocks

	1 Year to Date	2 Prior Year Ended December 31
1. Book/adjusted carrying value of bonds and stocks, December 31 of prior year .....	10,417,250	10,441,014
2. Cost of bonds and stocks acquired .....	200,355	2,596,190
3. Accrual of discount .....	6,564	37,616
4. Unrealized valuation increase/(decrease) .....	0	
5. Total gain (loss) on disposals .....	0	
6. Deduct consideration for bonds and stocks disposed of .....	0	2,641,967
7. Deduct amortization of premium .....	4,425	15,603
8. Total foreign exchange change in book/adjusted carrying value .....	0	
9. Deduct current year's other than temporary impairment recognized .....	0	
10. Total investment income recognized as a result of prepayment penalties and/or acceleration fees .....	0	0
11. Book/adjusted carrying value at end of current period (Lines 1+2+3+4+5-6-7+8-9+10) .....	10,619,745	10,417,250
12. Deduct total nonadmitted amounts .....	0	0
13. Statement value at end of current period (Line 11 minus Line 12)	10,619,745	10,417,250

STATEMENT AS OF MARCH 31, 2026 OF THE PROVIDENCE WASHINGTON INSURANCE COMPANY

**SCHEDULE D - PART 1B**

Showing the Acquisitions, Dispositions and Non-Trading Activity  
During the Current Quarter for all Bonds and Preferred Stock by NAIC Designation

NAIC Designation	1 Book/Adjusted Carrying Value Beginning of Current Quarter	2 Acquisitions During Current Quarter	3 Dispositions During Current Quarter	4 Non-Trading Activity During Current Quarter	5 Book/Adjusted Carrying Value End of First Quarter	6 Book/Adjusted Carrying Value End of Second Quarter	7 Book/Adjusted Carrying Value End of Third Quarter	8 Book/Adjusted Carrying Value December 31 Prior Year
<b>ISSUER CREDIT OBLIGATIONS (ICO)</b>								
1. NAIC 1 (a) .....	9,764,950	98,097	497,700	2,842	9,368,189	0	0	9,764,950
2. NAIC 2 (a) .....	1,150,477	102,258	0	(1,180)	1,251,555	0	0	1,150,477
3. NAIC 3 (a) .....	0	0	0	0	0	0	0	0
4. NAIC 4 (a) .....	0	0	0	0	0	0	0	0
5. NAIC 5 (a) .....	0	0	0	0	0	0	0	0
6. NAIC 6 (a) .....	0	0	0	0	0	0	0	0
7. Total ICO	10,915,427	200,355	497,700	1,663	10,619,745	0	0	10,915,427
<b>ASSET-BACKED SECURITIES (ABS)</b>								
8. NAIC 1 .....	0	0	0	0	0	0	0	0
9. NAIC 2 .....	0	0	0	0	0	0	0	0
10. NAIC 3 .....	0	0	0	0	0	0	0	0
11. NAIC 4 .....	0	0	0	0	0	0	0	0
12. NAIC 5 .....	0	0	0	0	0	0	0	0
13. NAIC 6 .....	0	0	0	0	0	0	0	0
14. Total ABS	0	0	0	0	0	0	0	0
<b>PREFERRED STOCK</b>								
15. NAIC 1 .....	0	0	0	0	0	0	0	0
16. NAIC 2 .....	0	0	0	0	0	0	0	0
17. NAIC 3 .....	0	0	0	0	0	0	0	0
18. NAIC 4 .....	0	0	0	0	0	0	0	0
19. NAIC 5 .....	0	0	0	0	0	0	0	0
20. NAIC 6 .....	0	0	0	0	0	0	0	0
21. Total Preferred Stock	0	0	0	0	0	0	0	0
22. Total ICO, ABS & Preferred Stock	10,915,427	200,355	497,700	1,663	10,619,745	0	0	10,915,427

(a) Book/Adjusted Carrying Value column for the end of the current reporting period includes the following amount of short-term and cash equivalent bonds by NAIC designation:

NAIC 1 \$ .....0 ; NAIC 2 \$ .....0 ; NAIC 3 \$ .....0 ; NAIC 4 \$ .....0 ; NAIC 5 \$ .....0 ; NAIC 6 \$ .....0

S102

**SCHEDULE DA - PART 1**

Short-Term Investments

	1	2	3	4	5
	Book/Adjusted Carrying Value	Premium	Actual Cost	Interest Collected Year-to-Date	Paid for Accrued Interest Year-to-Date
7709999999 Totals		XX			

**NONE**

**SCHEDULE DA - VERIFICATION**

Short-Term Investments

	1	2
	Year To Date	Prior Year Ended December 31
1. Book/adjusted carrying value, December 31 of prior year .....	498,176	657,723
2. Cost of short-term investments acquired .....	0	500,015
3. Accrual of discount .....	0	5,277
4. Unrealized valuation increase/(decrease) .....	0	0
5. Total gain (loss) on disposals .....	0	0
6. Deduct consideration received on disposals .....	497,700	663,000
7. Deduct amortization of premium .....	476	1,839
8. Total foreign exchange change in book/adjusted carrying value .....	0	0
9. Deduct current year's other than temporary impairment recognized .....	0	0
10. Book/adjusted carrying value at end of current period (Lines 1+2+3+4+5-6-7+8-9) .....	0	498,176
11. Deduct total nonadmitted amounts .....	0	0
12. Statement value at end of current period (Line 10 minus Line 11)	0	498,176

Schedule DB - Part A - Verification - Options, Caps, Floors, Collars, Swaps and Forwards

**N O N E**

Schedule DB - Part B - Verification - Futures Contracts

**N O N E**

Schedule DB - Part C - Section 1 - Replication (Synthetic Asset) Transactions (RSATs) Open

**N O N E**

Schedule DB-Part C-Section 2-Reconciliation of Replication (Synthetic Asset) Transactions Open

**N O N E**

Schedule DB - Verification - Book/Adjusted Carrying Value, Fair Value and Potential Exposure of  
Derivatives

**N O N E**

**SCHEDULE E - PART 2 - VERIFICATION**

(Cash Equivalents)

	1	2
	Year To Date	Prior Year Ended December 31
1. Book/adjusted carrying value, December 31 of prior year .....	1,665,978	1,806,869
2. Cost of cash equivalents acquired .....	768,447	4,242,969
3. Accrual of discount .....	0	1,050
4. Unrealized valuation increase/(decrease) .....	0	0
5. Total gain (loss) on disposals .....	0	0
6. Deduct consideration received on disposals .....	96,528	4,384,910
7. Deduct amortization of premium .....	0	0
8. Total foreign exchange change in book/adjusted carrying value .....	0	0
9. Deduct current year's other than temporary impairment recognized .....	0	0
10. Book/adjusted carrying value at end of current period (Lines 1+2+3+4+5-6-7+8-9) .....	2,337,897	1,665,978
11. Deduct total nonadmitted amounts .....	0	0
12. Statement value at end of current period (Line 10 minus Line 11)	2,337,897	1,665,978

Schedule A - Part 2 - Real Estate Acquired and Additions Made

**N O N E**

Schedule A - Part 3 - Real Estate Disposed

**N O N E**

Schedule B - Part 2 - Mortgage Loans Acquired and Additions Made

**N O N E**

Schedule B - Part 3 - Mortgage Loans Disposed, Transferred or Repaid

**N O N E**

Schedule BA - Part 2 - Other Long-Term Invested Assets Acquired and Additions Made

**N O N E**

Schedule BA - Part 3 - Other Long-Term Invested Assets Disposed, Transferred or Repaid

**N O N E**

STATEMENT AS OF MARCH 31, 2026 OF THE PROVIDENCE WASHINGTON INSURANCE COMPANY

**SCHEDULE D - PART 3**

Show All Long-Term Bonds and Stocks Acquired During the Current Quarter

1	2	3	4	5	6	7	8	9
CUSIP Identification	Description	Date Acquired	Name of Vendor	Number of Shares of Stock	Actual Cost	Par Value	Paid for Accrued Interest and Dividends	NAIC Designation, NAIC Designation Modifier and SVO Administrative Symbol
032095-AZ-4	AMPHENOL CORP	03/13/2026	MILLENNIUM ADVISORS LLC		98,097	100,000	379	1.G FE
871829-BU-0	SYSCO CORP	03/13/2026	BANC OF AMERICA/FIXED INCOME		102,258	100,000	2,451	2.B FE
0089999999	Subtotal - issuer credit obligations - corporate bonds (unaffiliated)				200,355	200,000	2,830	XXX
0489999999	Total - issuer credit obligations (unaffiliated)				200,355	200,000	2,830	XXX
0499999999	Total - issuer credit obligations (affiliated)				0	0	0	XXX
0509999997	Total - issuer credit obligations - Part 3				200,355	200,000	2,830	XXX
0509999998	Total - issuer credit obligations - Part 5				XXX	XXX	XXX	XXX
0509999999	Total - issuer credit obligations				200,355	200,000	2,830	XXX
1889999999	Total - asset-backed securities (unaffiliated)				0	0	0	XXX
1899999999	Total - asset-backed securities (affiliated)				0	0	0	XXX
1909999997	Total - asset-backed securities - Part 3				0	0	0	XXX
1909999998	Total - asset-backed securities - Part 5				XXX	XXX	XXX	XXX
1909999999	Total - asset-backed securities				0	0	0	XXX
2009999999	Total - issuer credit obligations and asset-backed securities				200,355	200,000	2,830	XXX
4509999997	Total - preferred stocks - Part 3				0	XXX	0	XXX
4509999998	Total - preferred stocks - Part 5				XXX	XXX	XXX	XXX
4509999999	Total - preferred stocks				0	XXX	0	XXX
5989999997	Total - common stocks - Part 3				0	XXX	0	XXX
5989999998	Total - common stocks - Part 5				XXX	XXX	XXX	XXX
5989999999	Total - common stocks				0	XXX	0	XXX
5999999999	Total - preferred and common stocks				0	XXX	0	XXX
6009999999	Totals				200,355	XXX	2,830	XXX

Schedule D - Part 4 - Long-Term Bonds and Stocks Sold, Redeemed or Otherwise Disposed Of

**N O N E**

Schedule DB - Part A - Section 1 - Options, Caps, Floors, Collars, Swaps and Forwards Open

**N O N E**

Schedule DB - Part B - Section 1 - Futures Contracts Open

**N O N E**

Schedule DB - Part B - Section 1B - Brokers with whom cash deposits have been made

**N O N E**

Schedule DB - Part D - Section 1 - Counterparty Exposure for Derivative Instruments Open

**N O N E**

Schedule DB - Part D-Section 2 - Collateral for Derivative Instruments Open - Pledged By

**N O N E**

Schedule DB - Part D-Section 2 - Collateral for Derivative Instruments Open - Pledged To

**N O N E**

Schedule DB - Part E - Derivatives Hedging Variable Annuity Guarantees

**N O N E**

Schedule DL - Part 1 - Reinvested Collateral Assets Owned

**N O N E**

Schedule DL - Part 2 - Reinvested Collateral Assets Owned

**N O N E**



STATEMENT AS OF MARCH 31, 2026 OF THE PROVIDENCE WASHINGTON INSURANCE COMPANY

**SCHEDULE E - PART 2 - CASH EQUIVALENTS**

Show Investments Owned End of Current Quarter

1	2	3	4	5	6	7	8	9
CUSIP	Description	Restricted Asset Code	Date Acquired	Stated Rate of Interest	Maturity Date	Book/Adjusted Carrying Value	Amount of Interest Due and Accrued	Amount Received During Year
0489999999	Total - issuer credit obligations (unaffiliated)					0	0	0
0499999999	Total - issuer credit obligations (affiliated)					0	0	0
0509999999	Total - issuer credit obligations					0	0	0
31846V-41-9	FIRST AMER:TRS OBG V	SD	09/02/2025	3.410		281	1	2
8209999999	Subtotal - exempt money market mutual funds - as identified by the SVO					281	1	2
38141W-27-3	GOLDMAN:FS GOVT INST		03/23/2026	3.510		667,016	1,555	2,926
38141W-27-3	GOLDMAN:FS GOVT INST		03/23/2026	3.510		1,670,600	5,092	12,389
8309999999	Subtotal - all other money market mutual funds					2,337,616	6,646	15,315
8589999999	Total cash equivalents (unaffiliated)					2,337,897	6,647	15,318
8599999999	Total cash equivalents (affiliated)					0	0	0
8609999999	Total cash equivalents					2,337,897	6,647	15,318

E14