



1 4 9 3 1 2 0 2 6 2 0 1 0 0 1 0 1

PROPERTY AND CASUALTY COMPANIES – ASSOCIATION EDITION

QUARTERLY STATEMENT
AS OF MARCH 31, 2026
OF THE CONDITION AND AFFAIRS OF THE
SLIDE SPECIALTY INSURANCE COMPANY

NAIC Group Code 5101, 5101 NAIC Company Code 14931 Employer's ID Number 05-0197250

Organized under the Laws of RI State of Domicile or Port of Entry RI
Country of Domicile US
Incorporated/Organized 06/19/1848 Commenced Business 02/10/1849
Statutory Home Office 225 Dyer Street, Second Floor Providence, RI, US 02903
Main Administrative Office 4221 W Boy Scout Blvd, Suite 200 Tampa, FL, US 33607
813-825-1097
(Telephone Number)
Mail Address 4221 W Boy Scout Blvd, Suite 200 Tampa, FL, US 33607
Primary Location of Books and Records 4221 W Boy Scout Blvd, Suite 200 Tampa, FL, US 33607
813-825-1097
(Telephone Number)
Internet Website Address www.slideinsurance.com
Statutory Statement Contact Rick Hanson 813-761-1867
(Telephone Number)
rhanson@slideinsurance.com
(E-Mail Address) (Fax Number)

OFFICERS

Bruce T Lucas, Chief Executive Officer/President Richard N Hanson, Chief Financial Officer/Treasurer
Shannon E Lucas, Chief Operating Officer/Secretary John C Devoe, Chief Claims Officer

OTHER

Matthew P Larson, Chief Risk Officer Charles W Powell, Chief Revenue Officer

DIRECTORS OR TRUSTEES

Bruce T Lucas Shannon E Lucas
Robert Gries Sheel Walvekar
Stephen Rohde

State of Florida
County of Hillsborough SS

The officers of this reporting entity being duly sworn, each depose and say that they are the described officers of said reporting entity, and that on the reporting period stated above, all of the herein described assets were the absolute property of the said reporting entity, free and clear from any liens or claims thereon, except as herein stated, and that this statement, together with related exhibits, schedules and explanations therein contained, annexed or referred to, is a full and true statement of all the assets and liabilities and of the condition and affairs of the said reporting entity as of the reporting period stated above, and of its income and deductions therefrom for the period ended, and have been completed in accordance with the NAIC Annual Statement Instructions and Accounting Practices and Procedures manual except to the extent that: (1) state law may differ; or, (2) that state rules or regulations require differences in reporting not related to accounting practices and procedures, according to the best of their information, knowledge and belief, respectively. Furthermore, the scope of this attestation by the described officers also includes the related corresponding electronic filing with the NAIC, when required, that is an exact copy (except for formatting differences due to electronic filing) of the enclosed statement. The electronic filing may be requested by various regulators in lieu of or in addition to the enclosed statement.

x Bruce T Lucas x Shannon E Lucas x Richard N Hanson
Chief Executive Officer/President Chief Operating Officer/Secretary Chief Financial Officer/Treasurer

Subscribed and sworn to before me
this \_\_\_\_\_ day of
\_\_\_\_\_, 2026

a. Is this an original filing? Yes
b. If no:
1. State the amendment number: \_\_\_\_\_
2. Date filed: \_\_\_\_\_
3. Number of pages attached: \_\_\_\_\_

x

**ASSETS**

	Current Statement Date			4
	1	2	3	December 31 Prior Year Net Admitted Assets
	Assets	Nonadmitted Assets	Net Admitted Assets (Cols. 1 - 2)	
1. Bonds.....				
2. Stocks:				
2.1 Preferred stocks.....				
2.2 Common stocks.....				
3. Mortgage loans on real estate:				
3.1 First liens.....				
3.2 Other than first liens.....				
4. Real estate:				
4.1 Properties occupied by the company (less \$..... encumbrances).....				
4.2 Properties held for the production of income (less \$..... encumbrances).....				
4.3 Properties held for sale (less \$..... encumbrances).....				
5. Cash (\$.....50,567,367), cash equivalents (\$.....0) and short-term investments (\$.....)	50,567,367		50,567,367	50,333,510
6. Contract loans (including \$..... premium notes).....				
7. Derivatives.....				
8. Other invested assets.....				
9. Receivables for securities.....				
10. Securities lending reinvested collateral assets.....				
11. Aggregate write-ins for invested assets.....				
12. Subtotals, cash and invested assets (Lines 1 to 11).....	50,567,367		50,567,367	50,333,510
13. Title plants less \$..... charged off (for Title insurers only).....				
14. Investment income due and accrued.....				29
15. Premiums and considerations:				
15.1 Uncollected premiums and agents' balances in the course of collection.....				
15.2 Deferred premiums, agents' balances and installments booked but deferred and not yet due (including \$..... earned but unbilled premiums).....				
15.3 Accrued retrospective premiums (\$.....) and contracts subject to redetermination (\$.....).....				
16. Reinsurance:				
16.1 Amounts recoverable from reinsurers.....				
16.2 Funds held by or deposited with reinsured companies.....				
16.3 Other amounts receivable under reinsurance contracts.....				
17. Amounts receivable relating to uninsured plans.....				
18.1 Current federal and foreign income tax recoverable and interest thereon.....				
18.2 Net deferred tax asset.....	4,521		4,521	
19. Guaranty funds receivable or on deposit.....				
20. Electronic data processing equipment and software.....				
21. Furniture and equipment, including health care delivery assets (\$.....)				
22. Net adjustment in assets and liabilities due to foreign exchange rates.....				
23. Receivables from parent, subsidiaries and affiliates.....	317		317	
24. Health care (\$.....) and other amounts receivable.....				
25. Aggregate write-ins for other-than-invested assets.....	22,500	22,500	-	
26. Total assets excluding Separate Accounts, Segregated Accounts and Protected Cell Accounts (Lines 12 to 25).....	50,594,705	22,500	50,572,205	50,333,539
27. From Separate Accounts, Segregated Accounts and Protected Cell Accounts.....				
28. Total (Lines 26 and 27).....	50,594,705	22,500	50,572,205	50,333,539
<b>Details of Write-Ins</b>				
1101.....				
1102.....				
1103.....				
1198. Summary of remaining write-ins for Line 11 from overflow page.....				
1199. Totals (Lines 1101 through 1103 plus 1198) (Line 11 above).....				
2501. Prepaid.....	22,500	22,500	-	-
2502.....				
2503.....				
2598. Summary of remaining write-ins for Line 25 from overflow page.....				
2599. Totals (Lines 2501 through 2503 plus 2598) (Line 25 above).....	22,500	22,500	-	

**LIABILITIES, SURPLUS AND OTHER FUNDS**

	1	2
	Current Statement Date	December 31, Prior Year
1. Losses (current accident year \$.....)		
2. Reinsurance payable on paid losses and loss adjustment expenses		
3. Loss adjustment expenses		
4. Commissions payable, contingent commissions and other similar charges		
5. Other expenses (excluding taxes, licenses and fees)		
6. Taxes, licenses and fees (excluding federal and foreign income taxes)	11,128	11,128
7.1 Current federal and foreign income taxes (including \$..... on realized capital gains (losses))	116,947	63,303
7.2 Net deferred tax liability		
8. Borrowed money \$..... and interest thereon \$.....		
9. Unearned premiums (after deducting unearned premiums for ceded reinsurance of \$..... and including warranty reserves of \$..... and accrued accident and health experience rating refunds including \$..... for medical loss ratio rebate per the Public Health Service Act)		
10. Advance premium		
11. Dividends declared and unpaid:		
11.1 Stockholders		
11.2 Policyholders		
12. Ceded reinsurance premiums payable (net of ceding commissions)		
13. Funds held by company under reinsurance treaties		
14. Amounts withheld or retained by company for account of others		
15. Remittances and items not allocated		
16. Provision for reinsurance (including \$..... certified)		
17. Net adjustments in assets and liabilities due to foreign exchange rates		
18. Drafts outstanding		
19. Payable to parent, subsidiaries and affiliates	32,500	9,777
20. Derivatives		
21. Payable for securities		
22. Payable for securities lending		
23. Liability for amounts held under uninsured plans		
24. Capital notes \$..... and interest thereon \$.....		
25. Aggregate write-ins for liabilities		
26. Total liabilities excluding protected cell liabilities (Lines 1 through 25)	160,575	84,208
27. Protected cell liabilities		
28. Total liabilities (Lines 26 and 27)	160,575	84,208
29. Aggregate write-ins for special surplus funds		
30. Common capital stock	1,500,000	1,500,000
31. Preferred capital stock		
32. Aggregate write-ins for other-than-special surplus funds		
33. Surplus notes		
34. Gross paid in and contributed surplus	48,500,000	48,500,000
35. Unassigned funds (surplus)	411,630	249,331
36. Less treasury stock, at cost:		
36.1 shares common (value included in Line 30 \$.....)		
36.2 shares preferred (value included in Line 31 \$.....)		
37. Surplus as regards policyholders (Lines 29 to 35, less 36)	50,411,630	50,249,331
38. Totals (Page 2, Line 28, Col. 3)	50,572,205	50,333,539
<b>Details of Write-Ins</b>		
2501.....		
2502.....		
2503.....		
2598. Summary of remaining write-ins for Line 25 from overflow page		
2599. Totals (Lines 2501 through 2503 plus 2598) (Line 25 above)		
2901.....		
2902.....		
2903.....		
2998. Summary of remaining write-ins for Line 29 from overflow page		
2999. Totals (Lines 2901 through 2903 plus 2998) (Line 29 above)		
3201.....		
3202.....		
3203.....		
3298. Summary of remaining write-ins for Line 32 from overflow page		
3299. Totals (Lines 3201 through 3203 plus 3298) (Line 32 above)		

**STATEMENT OF INCOME**

	1	2	3
	Current Year to Date	Prior Year to Date	Prior Year Ended December 31
<b>Underwriting Income</b>			
1. Premiums earned:			
1.1. Direct (written \$.....)			
1.2. Assumed (written \$.....)			
1.3. Ceded (written \$.....)			
1.4. Net (written \$.....)			
<b>Deductions:</b>			
2. Losses incurred (current accident year \$):			
2.1. Direct			
2.2. Assumed			
2.3. Ceded			
2.4. Net			
3. Loss adjustment expenses incurred			
4. Other underwriting expenses incurred	133,414	678	24,439
5. Aggregate write-ins for underwriting deductions		-	
6. Total underwriting deductions (Lines 2 through 5)	133,414	678	24,439
7. Net income of protected cells			
8. Net underwriting gain (loss) (Line 1 minus Line 6 + Line 7)	(133,414)	(678)	(24,439)
<b>Investment Income</b>			
9. Net investment income earned	367,337		339,633
10. Net realized capital gains (losses) less capital gains tax of \$.....			
11. Net investment gain (loss) (Lines 9 + 10)	367,337		339,633
<b>Other Income</b>			
12. Net gain or (loss) from agents' or premium balances charged off (amount recovered \$..... amount charged off \$.....)			
13. Finance and service charges not included in premiums			
14. Aggregate write-ins for miscellaneous income			
15. Total other income (Lines 12 through 14)			
16. Net income before dividends to policyholders, after capital gains tax and before all other federal and foreign income taxes (Lines 8 + 11 + 15)	233,923	(678)	315,194
17. Dividends to policyholders			
18. Net income, after dividends to policyholders, after capital gains tax and before all other federal and foreign income taxes (Line 16 minus Line 17)	233,923	(678)	315,194
19. Federal and foreign income taxes incurred	53,645	220	65,863
20. Net income (Line 18 minus Line 19) (to Line 22)	180,278	(898)	249,331
<b>Capital and Surplus Account</b>			
21. Surplus as regards policyholders, December 31 prior year	50,249,331	377,757	377,757
22. Net income (from Line 20)	180,278	(898)	249,331
23. Net transfers (to) from Protected Cell accounts			
24. Change in net unrealized capital gains or (losses) less capital gains tax of \$.....			
25. Change in net unrealized foreign exchange capital gain (loss)			
26. Change in net deferred income tax	4,521	(363)	
27. Change in nonadmitted assets	(22,500)		
28. Change in provision for reinsurance			
29. Change in surplus notes			
30. Surplus (contributed to) withdrawn from protected cells			
31. Cumulative effect of changes in accounting principles			
32. Capital changes:			
32.1. Paid in		1,122,243	1,122,243
32.2. Transferred from surplus (stock dividend)			
32.3. Transferred to surplus			
33. Surplus adjustments:			
33.1. Paid in	-	3,500,000	48,500,000
33.2. Transferred to capital (stock dividend)			
33.3. Transferred from capital			
34. Net remittances from or (to) home office			
35. Dividends to stockholders			
36. Change in treasury stock			
37. Aggregate write-ins for gains and losses in surplus			
38. Change in surplus as regards policyholders (Lines 22 through 37)	162,299	4,620,982	49,871,574
39. Surplus as regards policyholders, as of statement date (Lines 21 plus 38)	50,411,630	4,998,739	50,249,331
<b>Details of Write-Ins</b>			
0501.			
0502.			
0503.			
0598. Summary of remaining write-ins for Line 5 from overflow page			
0599. Totals (Lines 0501 through 0503 plus 0598) (Line 5 above)		-	
1401.			
1402.			
1403.			
1498. Summary of remaining write-ins for Line 14 from overflow page			
1499. Totals (Lines 1401 through 1403 plus 1498) (Line 14 above)			
3701.			
3702.			
3703.			
3798. Summary of remaining write-ins for Line 37 from overflow page			
3799. Totals (Lines 3701 through 3703 plus 3798) (Line 37 above)			

**CASH FLOW**

	1	2	3
	Current Year To Date	Prior Year To Date	Prior Year Ended December 31
<b>Cash from Operations</b>			
1. Premiums collected net of reinsurance			
2. Net investment income	367,366		339,604
3. Miscellaneous income			
4. Total (Lines 1 to 3)	367,366		339,604
5. Benefit and loss related payments			
6. Net transfers to Separate Accounts, Segregated Accounts and Protected Cell Accounts			
7. Commissions, expenses paid and aggregate write-ins for deductions	133,414	998	13,631
8. Dividends paid to policyholders			
9. Federal and foreign income taxes paid (recovered) net of \$..... tax on capital gains (losses)	1	683	3,243
10. Total (Lines 5 through 9)	133,415	1,681	16,874
11. Net cash from operations (Line 4 minus Line 10)	233,951	(1,681)	322,730
<b>Cash from Investments</b>			
12. Proceeds from investments sold, matured or repaid:			
12.1 Bonds			
12.2 Stocks			
12.3 Mortgage loans			
12.4 Real estate			
12.5 Other invested assets			
12.6 Net gains or (losses) on cash, cash equivalents and short-term investments			
12.7 Miscellaneous proceeds	-	-	-
12.8 Total investment proceeds (Lines 12.1 to 12.7)	-	-	-
13. Cost of investments acquired (long-term only):			
13.1 Bonds			
13.2 Stocks			
13.3 Mortgage loans			
13.4 Real estate			
13.5 Other invested assets			
13.6 Miscellaneous applications	-	-	-
13.7 Total investments acquired (Lines 13.1 to 13.6)	-	-	-
14. Net increase/(decrease) in contract loans and premium notes			
15. Net cash from investments (Line 12.8 minus Line 13.7 and Line 14)	-	-	-
<b>Cash from Financing and Miscellaneous Sources</b>			
16. Cash provided (applied):			
16.1 Surplus notes, capital notes			
16.2 Capital and paid in surplus, less treasury stock	-	4,622,243	49,622,243
16.3 Borrowed funds			
16.4 Net deposits on deposit-type contracts and other insurance liabilities			
16.5 Dividends to stockholders			
16.6 Other cash provided (applied)	(95)		9,777
17. Net cash from financing and miscellaneous sources (Line 16.1 through Line 16.4 minus Line 16.5 plus Line 16.6)	(95)	4,622,243	49,632,020
<b>Reconciliation of Cash, Cash Equivalents and Short-Term Investments</b>			
18. Net change in cash, cash equivalents and short-term investments (Line 11, plus Lines 15 and 17)	233,856	4,620,562	49,954,750
19. Cash, cash equivalents and short-term investments:			
19.1 Beginning of year	50,333,511	378,760	378,761
19.2 End of period (Line 18 plus Line 19.1)	50,567,367	4,999,322	50,333,511
Note: Supplemental disclosures of cash flow information for non-cash transactions:			
20.0001.			

**Notes to the Financial Statements**

**1. Summary of Significant Accounting Policies and Going Concern**

**A. Accounting Practices**

The accompanying financial statements of Pawtucket Insurance Company (the "Company" or "PIC") are presented on the basis of accounting practices prescribed or permitted by the state of Rhode Island Insurance Department.

The Rhode Island Insurance Department recognizes only statutory accounting practices prescribed or permitted by the State of Rhode Island for determining and reporting the financial condition and results of operations of an insurance company, and for determining its solvency under the Rhode Island Insurance Law. The National Association of Insurance Commissioners' ("NAIC") *Accounting Practices and Procedures Manual* ("NAIC SAP") has been adopted as a component of prescribed or permitted practices by the State of Rhode Island.

A reconciliation of the Company's surplus between the practice permitted by the Rhode Island Department and the NAIC SAP is shown below:

	SSAP #	F/S Page	F/S Line #	03/31/2026	12/31/2025
Net Income					
(1) State basis (Page 4, Line 20, Columns 1 & 3)	XXX	XXX	XXX	\$ 180,278	\$ 249,331
(2) State prescribed practices that are an increase / (decrease) from NAIC SAP:					
(3) State permitted practices that are an increase / (decrease) from NAIC SAP:					
(4) NAIC SAP (1-2-3=4)	XXX	XXX	XXX	<u>\$ 180,278</u>	<u>\$ 249,331</u>
Surplus					
(5) State basis (Page 3, Line 37, Columns 1 & 2)	XXX	XXX	XXX	\$ 50,411,630	\$ 50,249,331
(6) State prescribed practices that are an increase / (decrease) from NAIC SAP:					
(7) State permitted practices that are an increase / (decrease) from NAIC SAP:					
(8) NAIC SAP (5-6-7=8)	XXX	XXX	XXX	<u>\$ 50,411,630</u>	<u>\$ 50,249,331</u>

**B. Use of Estimates in the Preparation of the Financial Statements**

The preparation of financial statements in conformity with Statutory Accounting Principles ("SAP") requires management to make estimates and assumptions that affect the reported amounts of assets and liabilities. It also requires disclosure of contingent assets and liabilities at the date of the financial statements and the reported amounts of revenue and expenses during the period. Actual results could differ from those estimates.

**C. Accounting Policy**

Premiums are earned over the terms of the related insurance policies and reinsurance contracts. Unearned premium reserves are established to cover the unexpired portion of premiums written. Such reserves are computed by pro rata methods for direct business and are based on reports from ceding companies for reinsurance assumed and contract terms for reinsurance ceded. However, there were no written nor earned premiums in 2026 or 2025.

In addition, the company uses the following accounting policies:

- (1) Short-term investments are stated at amortized cost.
- (2) Bonds not backed by other loans are stated at amortized cost using the scientific interest method.
- (3) Unaffiliated common stocks are stated at market value.
- (4) Preferred Stocks, depending on type, are stated at cost or market.
- (5) Mortgage loans - Not Applicable
- (6) Loan-backed securities are stated at amortized cost. The retrospective amortization adjustment method is used to value all loan-backed securities.
- (7) Investments in subsidiaries, controlled and affiliated entities - Not Applicable
- (8) Investments in joint ventures, partnerships and limited liability companies - Not Applicable
- (9) Derivatives - Not Applicable
- (10) Investment income as a factor in the premium deficiency calculation - Not Applicable
- (11) Unpaid losses and loss adjustment expenses include an amount determined from individual case estimates and loss reports and an amount, based on past experience, for losses incurred but not reported. Such liabilities are necessarily based on assumptions and estimates and, while management believes the amount is adequate, the ultimate liability may be in excess of or less than the amount provided. The methods for making such estimates, and for establishing the resulting liability, are continually reviewed and any adjustments are reflected in the period determined.
- (12) Changes in capitalization policy - No Significant Changes
- (13) Pharmaceutical rebate receivables - Not Applicable

**D. Going Concern - Not Applicable**

**2. Accounting Changes and Corrections of Errors - Not Applicable**

**3. Business Combinations and Goodwill - None**

**4. Discontinued Operations - Not Applicable**

**Notes to the Financial Statements**

**5. Investments**

Not Applicable

- A. Mortgage Loans, including Mezzanine Real Estate Loans - Not Applicable
- B. Debt Restructuring - Not Applicable
- C. Reverse Mortgages - Not Applicable
- D. Asset-Backed Securities - Not Applicable
- E. Dollar Repurchase Agreements and/or Securities Lending Transactions - Not Applicable
- F. Repurchase Agreements Transactions Accounted for as Secured Borrowing - Not Applicable
- G. Reverse Repurchase Agreements Transactions Accounted for as Secured Borrowing - Not Applicable
- H. Repurchase Agreements Transactions Accounted for as a Sale - Not Applicable
- I. Reverse Repurchase Agreements Transactions Accounted for as a Sale - Not Applicable
- J. Real Estate - Not Applicable
- K. Investments in Tax Credit Structures (tax credit investments)

The Company has no investments in tax credit structures, including Low-Income Housing Tax Credits (LIHTC), New Markets Tax Credits (NMTC), or similar tax credit investments. Therefore, this disclosure is not applicable.

- (1) Not applicable.
- (2) Not applicable.
- (3) Not applicable.
- (4) Not applicable.
- (5) Not applicable.
- (6) Not applicable.
- (7) Not applicable.
- (8) Not applicable.

L. Restricted Assets

- (1) Restricted assets (including pledged)

Restricted Asset Category	Gross (Admitted & Nonadmitted) Restricted						
	Current Year					(6)	(7)
	(1)	(2)	(3)	(4)	(5)		
	Total General Account (G/A)	G/A Supporting Protected Cell Account Activity	Total Protected Cell Account Restricted Assets	Protected Cell Account Assets Supporting G/A Activity	Total (1 + 3)	Total From Prior Year	Increase / (Decrease) (5 - 6)
a. Subject to contractual obligation for which liability is not shown	\$	\$	\$	\$	\$	\$	\$
b. Collateral held under security lending agreements							
c. Subject to repurchase agreements							
d. Subject to reverse repurchase agreements							
e. Subject to dollar repurchase agreements							
f. Subject to dollar reverse repurchase agreements							
g. Placed under option contracts							
h. Letter stock or securities restricted as to sale - excluding FHLB capital stock							
i. FHLB capital stock							
j. On deposit with states	126,067				126,067	125,000	1,067
k. On deposit with other regulatory bodies							
l. Pledged as collateral to FHLB (including assets backing funding agreements)							
m. Pledged as collateral not captured in other categories							
n. Other restricted assets							
o. Collateral assets received and on balance sheet							
p. Assets held under modco reinsurance agreements							
q. Assets held under funds withheld reinsurance agreements							
r. Total restricted assets (Sum of a through q)	<u>126,067</u>	<u></u>	<u></u>	<u></u>	<u>126,067</u>	<u>125,000</u>	<u>1,067</u>

**Notes to the Financial Statements**

**5. Investments (Continued)**

Restricted Asset Category	Current Year						
	(8)	(9)	(10)	(11)	(12)	(13)	(14)
	Total Nonadmitted Restricted	Total Admitted Restricted (5 - 8)	Gross (Admitted & Nonadmitted) Restricted to Total Assets, %	Admitted Restricted to Total Admitted Assets, %	Amount Reported in General Interrogatories	Difference from Note and Annual GI	Annual GI Ref
a. Subject to contractual obligation for which liability is not shown	\$	\$	%	%	XXX	XXX	XXX
b. Collateral held under security lending agreements					XXX	XXX	25.04+25.05
c. Subject to repurchase agreements					XXX	XXX	26.21
d. Subject to reverse repurchase agreements					XXX	XXX	26.22
e. Subject to dollar repurchase agreements					XXX	XXX	26.23
f. Subject to dollar reverse repurchase agreements					XXX	XXX	26.24
g. Placed under option contracts					XXX	XXX	26.25
h. Letter stock or securities restricted as to sale - excluding FHLB capital stock					XXX	XXX	26.26
i. FHLB capital stock					XXX	XXX	26.27
j. On deposit with states		126,067	0.249	0.249	XXX	XXX	26.28
k. On deposit with other regulatory bodies					XXX	XXX	26.29
l. Pledged as collateral to FHLB (including assets backing funding agreements)					XXX	XXX	26.31
m. Pledged as collateral not captured in other categories					XXX	XXX	26.30
n. Other restricted assets					XXX	XXX	26.32
o. Collateral assets received and on balance sheet					XXX	XXX	XXX
p. Assets held under modco reinsurance agreements					XXX	XXX	XXX
q. Assets held under funds withheld reinsurance agreements					XXX	XXX	XXX
r. Total restricted assets (Sum of a through q)	\$	\$ 126,067	0.249 %	0.249 %	XXX	XXX	XXX

- (2) Detail of assets pledged as collateral not captured in other categories (contracts that share similar characteristics, such as reinsurance (excluding Modco/FWH) and derivatives, are reported in the aggregate) - Not Applicable
- (3) Detail of other restricted assets (contracts that share similar characteristics, such as reinsurance (excluding Modco/FWH) and derivatives, are reported in the aggregate) - Not Applicable
- (4) Collateral received and assets held under Modco/Funds Withheld (FWH) reinsurance agreements reflected as assets within the reporting entity's financial statements - Not Applicable
- (5) Assets held as collateral or under modified coinsurance (Modco) or funds withheld reinsurance (FWH) agreements that have been pledged for another purpose specific to the insurance reporting entity (not for the benefit of the reinsurer)

	Collateral Held	Modco	FWH
a. Securities lending	\$	\$	\$
b. Repo/repurchase agreements			
c. Placed under option contracts			
d. On deposit with states			
e. On deposit with other regulatory bodies			
f. Pledged as collateral to FHLB (including assets backing funding agreements)			
g. Pledged as collateral not captured in other categories			
h. Total (a+b+c+d+e+f+g)	\$	\$	\$

**M. Working Capital Finance Investments**

- (1) Aggregate working capital finance investments (WCFI) book/adjusted carrying value by NAIC designation - Not Applicable
- (2) Aggregate maturity distribution on the underlying working capital finance programs - Not Applicable
- (3) Events of default of working capital finance investments during the reporting period - Not Applicable

**N. Offsetting and Netting of Assets and Liabilities - Not Applicable**

**O. 5GI Securities - Not Applicable**

**P. Short Sales - Not Applicable**

**Q. Prepayment Penalty and Acceleration Fees - Not Applicable**

**R. Reporting Entity's Share of Cash Pool by Asset Type - Not Applicable**

**S. Aggregate Collateral Loans by Qualifying Investment Collateral**

Not applicable.

**Notes to the Financial Statements**

**5. Investments (Continued)**

Collateral Type	Aggregate Collateral Loan	Admitted	Nonadmitted
(1) Cash, Cash Equivalent & ST Investments			
a. Affiliated.....	\$.....	\$.....	\$.....
b. Unaffiliated.....			
(2) Issuer Credit Obligations			
a. Affiliated.....			
b. Unaffiliated.....			
(3) Asset-Backed Securities			
a. Affiliated.....			
b. Unaffiliated.....			
(4) Preferred Stocks			
a. Affiliated.....			
b. Unaffiliated.....			
(5) Common Stocks			
a. Affiliated.....			
b. Unaffiliated.....			
(6) Real Estate			
a. Affiliated.....			
b. Unaffiliated.....			
(7) Mortgage Loans			
a. Affiliated.....			
b. Unaffiliated.....			
(8) Joint Ventures, Partnerships, LLC			
a. Affiliated.....			
b. Unaffiliated.....			
(9) Other Qualifying Investments			
a. Affiliated.....			
b. Unaffiliated.....			
(10) Collateral Does not Qualify as an Investment			
a. Affiliated.....			
b. Unaffiliated.....			
(11) Total.....	\$.....	\$.....	\$.....

**6. Joint Ventures, Partnerships and Limited Liability Companies - No Significant Changes**

**7. Investment Income - No Significant Changes**

**8. Derivative Instruments - Not Applicable**

**9. Income Taxes - No Significant Changes**

**10. Information Concerning Parent, Subsidiaries, Affiliates and Other Related Parties**

A. In February 2025, Slide Insurance Holdings, Inc. received regulatory approval to take ownership of Pawtucket Insurance Company. Pawtucket Insurance Company was renamed as Slide Specialty Insurance Company in October 2025.

The Company's parent, Slide Insurance Holdings, Inc. contributed \$50,000,000 in capital contribution.

B. The Company is a party to an agreement with Slide MGA, LLC in which Slide MGA performs certain functions on behalf of the Company for a commission. As of March 31, 2026, the Company has expensed to Slide MGA \$0 for the services provided which have been paid by Slide Specialty Insurance Company.

D. Amounts Due To or From Related Parties - None

E. Effective September 19, 2025, the Company has contracted with its affiliate Slide MGA, LLC to be its MGA in selling residential property insurance policies. Slide MGA is responsible for policy processing, agent services and claims handling for the Company.

F. Guarantees or Contingencies - Not Applicable

G. Nature of Relationships that Could Affect Operations - None

H. Amount Deducted for Investment in Upstream Company - Not Applicable

I. Detail of Investments in Affiliates Greater Than 10% of Admitted Assets - None

J. Write-Down for Impairments of Investments in Subsidiary Controlled or Affiliated Companies - Not Applicable

K. Foreign Subsidiary Value Using CARVM - Not Applicable

L. Downstream Holding Company Value Using Look-Through Method - Not Applicable

M. All SCA Investments - Not Applicable

## Notes to the Financial Statements

### 10. Information Concerning Parent, Subsidiaries, Affiliates and Other Related Parties (Continued)

N. Investment in Insurance SCAs - Not Applicable

O. SCA and SSAP No. 48 Entity Loss Tracking

The Company has no share of losses in an SCA or SSAP No.48 entity.

11. **Debt** - Not Applicable

12. **Retirement Plans, Deferred Compensation, Postemployment Benefits and Compensated Absences and Other Postretirement Benefit Plans** - Not Applicable

13. **Capital and Surplus, Dividend Restrictions and Quasi-Reorganizations** - No Significant Changes

14. **Liabilities, Contingencies and Assessments** - Not Applicable

15. **Leases** - None

16. **Information About Financial Instruments With Off-Balance-Sheet Risk And Financial Instruments With Concentrations of Credit Risk** - Not Applicable

17. **Sale, Transfer and Servicing of Financial Assets and Extinguishments of Liabilities** - Not Applicable

18. **Gain or Loss to the Reporting Entity from Uninsured Plans and the Uninsured Portion of Partially Insured Plans** - Not Applicable

19. **Direct Premium Written/Produced by Managing General Agents/Third Party Administrators** - None

20. **Fair Value Measurements** - Not Applicable

### 21. Other Items

A. Unusual or Infrequent Items - Not Applicable

B. Troubled Debt Restructuring - Not Applicable

C. Other Disclosures - Not Applicable

D. Business Interruption Insurance Recoveries - Not Applicable

E. State and Federal Tax Credits

This disclosure is not applicable to the Company.

(1) Carrying value of state and federal tax credits, disaggregated by transferable/certificated and non-transferable, gross of any related tax liabilities by jurisdiction and in total - Not Applicable

(2) Total unused tax credits by jurisdiction, disaggregated by transferable/certificated and non-transferable - Not Applicable

(3) Method of estimating utilization of remaining state and federal tax credits - Not Applicable

(4) Impairment loss - Not Applicable

(5) State and federal tax credits admitted and nonadmitted disaggregated by transferable/certificated and non-transferable - Not Applicable

(6) Any commitment or contingent commitment to purchase tax credits - Not Applicable

F. Subprime-Mortgage-Related Risk Exposure - Not Applicable

G. Insurance-Linked Securities (ILS) Contracts - Not Applicable

H. The Amount That Could Be Realized on Life Insurance Where the Reporting Entity is Owner and Beneficiary or Has Otherwise Obtained Rights to Control the Policy - Not Applicable

### 22. Events Subsequent

The Company evaluated subsequent events through May 13, 2026, and determined no subsequent events to report.

23. **Reinsurance** - No Significant Changes

24. **Retrospectively Rated Contracts & Contracts Subject to Redetermination** - Not Applicable

25. **Changes in Incurred Losses and Loss Adjustment Expenses** - Not Applicable

26. **Intercompany Pooling Arrangements** - Not Applicable

27. **Structured Settlements** - Not Applicable

28. **Health Care Receivables** - Not Applicable

29. **Participating Policies** - Not Applicable

30. **Premium Deficiency Reserves** - Not Applicable

31. **High Deductibles** - Not Applicable

32. **Discounting of Liabilities For Unpaid Losses or Unpaid Loss Adjustment Expenses** - Not Applicable

33. **Asbestos/Environmental Reserves** - Not Applicable

34. **Subscriber Savings Accounts** - Not Applicable

35. **Multiple Peril Crop Insurance** - Not Applicable

36. **Financial Guaranty Insurance** - Not Applicable

**GENERAL INTERROGATORIES**  
PART 1 - COMMON INTERROGATORIES

**GENERAL**

- 1.1 Did the reporting entity experience any material transactions requiring the filing of Disclosure of Material Transactions with the State of Domicile, as required by the Model Act?..... NO
- 1.2 If yes, has the report been filed with the domiciliary state?.....
- 2.1 Has any change been made during the year of this statement in the charter, by-laws, articles of incorporation, or deed of settlement of the reporting entity?..... NO
- 2.2 If yes, date of change:.....
- 3.1 Is the reporting entity a member of an Insurance Holding Company System consisting of two or more affiliated persons, one or more of which is an insurer?..... YES  
If yes, complete Schedule Y, Parts 1 and 1A.
- 3.2 Have there been any substantial changes in the organizational chart since the prior quarter end?..... YES
- 3.3 If the response to 3.2 is yes, provide a brief description of those changes.  
New affiliated Company added. Law Office of Jonathan Hall LLC
- 3.4 Is the reporting entity publicly traded or a member of a publicly traded group?..... YES
- 3.5 If the response to 3.4 is yes, provide the CIK (Central Index Key) code issued by the SEC for the entity/group..... 0001886428
- 4.1 Has the reporting entity been a party to a merger or consolidation during the period covered by this statement?..... NO
- 4.2 If yes, provide the name of entity, NAIC Company Code, and state of domicile (use two letter state abbreviation) for any entity that has ceased to exist as a result of the merger or consolidation.

1 Name of Entity	2 NAIC Company Code	3 State of Domicile

- 5. If the reporting entity is subject to a management agreement, including third-party administrator(s), managing general agent(s), attorney-in-fact, or similar agreement, have there been any significant changes regarding the terms of the agreement or principals involved?..... NO  
If yes, attach an explanation.
- 6.1 State as of what date the latest financial examination of the reporting entity was made or is being made..... 12/31/2021
- 6.2 State the as of date that the latest financial examination report became available from either the state of domicile or the reporting entity. This date should be the date of the examined balance sheet and not the date the report was completed or released..... 12/31/2021
- 6.3 State as of what date the latest financial examination report became available to other states or the public from either the state of domicile or the reporting entity. This is the release date or completion date of the examination report and not the date of the examination (balance sheet date)..... 06/14/2023
- 6.4 By what department or departments?  
RHODE ISLAND DEPARTMENT OF BUSINESS REGULATION-INSURANCE DIVISION
- 6.5 Have all financial statement adjustments within the latest financial examination report been accounted for in a subsequent financial statement filed with Departments?..... N/A
- 6.6 Have all of the recommendations within the latest financial examination report been complied with?..... N/A
- 7.1 Has this reporting entity had any Certificates of Authority, licenses or registrations (including corporate registration, if applicable) suspended or revoked by any governmental entity during the reporting period?..... NO
- 7.2 If yes, give full information
- 8.1 Is the company a subsidiary of a bank holding company regulated by the Federal Reserve Board?..... NO
- 8.2 If response to 8.1 is yes, please identify the name of the bank holding company.
- 8.3 Is the company affiliated with one or more banks, thrifts or securities firms?..... NO
- 8.4 If response to 8.3 is yes, please provide below the names and location (city and state of the main office) of any affiliates regulated by a federal regulatory services agency [i.e. the Federal Reserve Board (FRB), the Office of the Comptroller of the Currency (OCC), the Federal Deposit Insurance Corporation (FDIC) and the Securities Exchange Commission (SEC)] and identify the affiliates primary federal regulator.

1 Affiliate Name	2 Location (City, State)	3 FRB	4 OCC	5 FDIC	6 SEC

- 9.1 Are the senior officers (principal executive officer, principal financial officer, principal accounting officer or controller, or persons performing similar functions) of the reporting entity subject to a code of ethics, which includes the following standards?..... YES
  - (a) Honest and ethical conduct, including the ethical handling of actual or apparent conflicts of interest between personal and professional relationships;
  - (b) Full, fair, accurate, timely and understandable disclosure in the periodic reports required to be filed by the reporting entity;
  - (c) Compliance with applicable governmental laws, rules and regulations;
  - (d) The prompt internal reporting of violations to an appropriate person or persons identified in the code; and
  - (e) Accountability for adherence to the code.
- 9.11 If the response to 9.1 is no, please explain:
- 9.2 Has the code of ethics for senior managers been amended?..... NO
- 9.21 If the response to 9.2 is yes, provide information related to amendment(s).
- 9.3 Have any provisions of the code of ethics been waived for any of the specified officers?..... NO
- 9.31 If the response to 9.3 is yes, provide the nature of any waiver(s).

**GENERAL INTERROGATORIES**  
PART 1 - COMMON INTERROGATORIES

**FINANCIAL**

- 10.1 Does the reporting entity report any amounts due from parent, subsidiaries or affiliates on Page 2 of this statement?..... YES.....
- 10.2 If yes, indicate any amounts receivable from parent included in the Page 2 amount:..... \$..... -

**INVESTMENT**

- 11.1 Were any of the stocks, bonds, or other assets of the reporting entity loaned, placed under option agreement, or otherwise made available for use by another person? (Exclude securities under securities lending agreements.)..... NO.....
- 11.2 If yes, give full and complete information relating thereto:
12. Amount of real estate and mortgages held in other invested assets in Schedule BA:..... \$.....
- 13.1 Does the reporting entity have any investments in parent, subsidiaries and affiliates?..... NO.....
- 13.2 If yes, please complete the following:

	1	2
	Prior Year-End Book / Adjusted Carrying Value	Current Quarter Book / Adjusted Carrying Value
13.21 Bonds.....	\$.....	\$.....
13.22 Preferred Stock.....		
13.23 Common Stock.....		
13.24 Short-Term Investments.....		
13.25 Mortgage Loans on Real Estate.....		
13.26 All Other.....		
13.27 Total Investment in Parent, Subsidiaries and Affiliates (Subtotal Lines 13.21 to 13.26).....		
13.28 Total Investment in Parent included in Lines 13.21 to 13.26 above.....		

- 14.1 Has the reporting entity entered into any hedging transactions reported on Schedule DB?..... NO.....
- 14.2 If yes, has a comprehensive description of the hedging program been made available to the domiciliary state?..... N/A.....  
If no, attach a description with this statement.
15. For the reporting entity's security lending program, state the amount of the following as of the current statement date:
- 15.1 Total fair value of reinvested collateral assets reported on Schedule DL, Parts 1 and 2..... \$.....
- 15.2 Total book adjusted/carrying value of reinvested collateral assets reported on Schedule DL, Parts 1 and 2..... \$.....
- 15.3 Total payable for securities lending reported on the liability page..... \$.....

16. Excluding items in Schedule E - Part 3 - Special Deposits, real estate, mortgage loans and investments held physically in the reporting entity's offices, vaults or safety deposit boxes, were all stocks, bonds and other securities, owned throughout the current year held pursuant to a custodial agreement with a qualified bank or trust company in accordance with Section 1, III - General Examination Considerations, F. Outsourcing of Critical Functions, Custodial or Safekeeping Agreements of the NAIC *Financial Condition Examiners Handbook*?..... YES.....
- 16.1 For all agreements that comply with the requirements of the *Financial Condition Examiners Handbook*, complete the following:

1	2
Name of Custodian(s)	Custodian Address

- 16.2 For all agreements that do not comply with the requirements of the NAIC *Financial Condition Examiners Handbook*, provide the name, location and a complete explanation:
- | 1       | 2           | 3                       |
|---------|-------------|-------------------------|
| Name(s) | Location(s) | Complete Explanation(s) |
|         |             |                         |

- 16.3 Have there been any changes, including name changes, in the custodian(s) identified in 16.1 during the current quarter?.....
- 16.4 If yes, give full and complete information relating thereto:

1	2	3	4
Old Custodian	New Custodian	Date of Change	Reason

- 16.5 Investment management – Identify all investment advisors, investment managers, broker/dealers, including individuals that have the authority to make investment decisions on behalf of the reporting entity. This includes both primary and sub-advisors. For assets that are managed internally by employees of the reporting entity, note as such.

1	2
Name of Firm or Individual	Affiliation

- 16.5097 For those firms/individuals listed in the table for Question 16.5, do any firms/individuals unaffiliated with the reporting entity (i.e., designated with a "U") manage more than 10% of the reporting entity's invested assets?..... NO.....
- 16.5098 For firms/individuals unaffiliated with the reporting entity (i.e., designated with a "U") listed in the table for Question 16.5, does the total assets under management aggregate to more than 50% of the reporting entity's invested assets?..... NO.....

- 16.6 For those firms or individuals listed in the table for 16.5 with an affiliation code of "A" (affiliated) or "U" (unaffiliated), provide the information for the table below.

1	2	3	4
Central Registration Depository Number	Name of Firm or Individual	Registered With	Investment Management Agreement (IMA) Filed

**GENERAL INTERROGATORIES**  
PART 1 - COMMON INTERROGATORIES

- 17.1 Have all the filing requirements of the *Purposes and Procedures Manual of the NAIC Investment Analysis Office* been followed?..... YES.....
- 17.2 If no, list exceptions:
18. By self-designating 5GI securities, the reporting entity is certifying the following elements for each self-designated 5GI security:
- a. Documentation necessary to permit a full credit analysis of the security does not exist or an NAIC CRP credit rating for an FE or PL security is not available.
  - b. Issuer or obligor is current on all contracted interest and principal payments.
  - c. The insurer has an actual expectation of ultimate payment of all contracted interest and principal.
- Has the reporting entity self-designated 5GI securities per the criteria listed?..... NO.....
19. By self-designating PLGI securities, the reporting entity is certifying its compliance with the requirements as specified in the *Purposes and Procedures Manual of the NAIC Investment Analysis Office* (P&P Manual) for private letter rating (PLR) securities and the following elements of each self-designated PLGI security:
- a. The security was either:
    - i. issued prior to January 1, 2018 (which is exempt from PLR filing requirements pursuant to the P&P Manual), or
    - ii. issued from January 1, 2018 to December 31, 2021 and subject to a confidentiality agreement executed prior to January 1, 2022 which confidentiality agreement remains in force, for which an insurance company cannot provide a copy of a private letter rating rationale report to the SVO due to confidentiality or other contractual reasons ("waived submission PLR securities").
  - b. The reporting entity is holding capital commensurate with the NAIC Designation and NAIC Designation Category reported for the security.
  - c. The NAIC Designation and NAIC Designation Category were derived from the credit rating assigned by an NAIC CRP in its legal capacity as a NRSRO which is shown on a current private letter rating, dated during the financial statement year, held by the insurer and available for examination by state insurance regulators.
  - d. Other than for waived submission PLR securities, defined above, on or after January 1, 2024 for any PLR securities issued on or after January 1, 2022, if the reporting entity is not permitted to share this private credit rating or the private rating letter rationale report of the PL security with the SVO, it certifies that it is reporting it as an NAIC 5.B GI and may not assign any other self-designation.
- Has the reporting entity self-designated PLGI to securities, all of which meet the above requirement and as specified in the P&P Manual?..... NO.....
20. By assigning FE to a Schedule BA non-registered private fund, the reporting entity is certifying the following elements of each self-designated FE fund:
- a. The shares were purchased prior to January 1, 2019.
  - b. The reporting entity is holding capital commensurate with the NAIC Designation reported for the security.
  - c. The security had a public credit rating(s) with annual surveillance assigned by an NAIC CRP in its legal capacity as an NRSRO prior to January 1, 2019.
  - d. The fund only or predominantly holds bonds in its portfolio.
  - e. The current reported NAIC Designation was derived from the public credit rating(s) with annual surveillance assigned by an NAIC CRP in its legal capacity as an NRSRO.
  - f. The public credit rating(s) with annual surveillance assigned by an NAIC CRP has not lapsed.
- Has the reporting entity assigned FE to Schedule BA non-registered private funds that complied with the above criteria?..... NO.....

**GENERAL INTERROGATORIES**

PART 2 – PROPERTY & CASUALTY INTERROGATORIES

- 1. If the reporting entity is a member of a pooling arrangement, did the agreement or the reporting entity's participation change?..... N/A.....  
If yes, attach an explanation.
- 2. Has the reporting entity reinsured any risk with any other reporting entity and agreed to release such entity from liability, in whole or in part, from any loss that may occur on the risk, or portion thereof, reinsured?..... NO.....  
If yes, attach an explanation.
- 3.1 Have any of the reporting entity's primary reinsurance contracts been canceled?..... NO.....
- 3.2 If yes, give full and complete information thereto
- 4.1 Are any of the liabilities for unpaid losses and loss adjustment expenses other than certain workers' compensation tabular reserves (see Annual Statement Instructions pertaining to disclosure of discounting for definition of "tabular reserves,") discounted at a rate of interest greater than zero?..... NO.....

4.2 If yes, complete the following schedule:

			Total Discount				Discount Taken During Period			
1	2	3	4	5	6	7	8	9	10	11
Line of Business	Maximum Interest	Disc. Rate	Unpaid Losses	Unpaid LAE	IBNR	Total	Unpaid Losses	Unpaid LAE	IBNR	Total
Total.....										

- 5. Operating Percentages:
  - 5.1 A&H loss percent ..... %
  - 5.2 A&H cost containment percent ..... %
  - 5.3 A&H expense percent excluding cost containment expenses ..... %
- 6.1 Do you act as a custodian for health savings accounts?..... NO.....
- 6.2 If yes, please provide the amount of custodial funds held as of the reporting date..... \$.....
- 6.3 Do you act as an administrator for health savings accounts?..... NO.....
- 6.4 If yes, please provide the balance of the funds administered as of the reporting date..... \$.....
- 7. Is the reporting entity licensed or chartered, registered, qualified, eligible or writing business in at least two states?..... YES.....
- 7.1 If no, does the reporting entity assume reinsurance business that covers risks residing in at least one state other than the state of domicile of the reporting entity?.....

**SCHEDULE F - CEDED REINSURANCE**

Showing All New Reinsurers - Current Year to Date

1	2	3	4	5	6	7
NAIC Company Code	ID Number	Name of Reinsurer	Domiciliary Jurisdiction	Type of Reinsurer	Certified Reinsurer Rating (1 through 6)	Effective Date of Certified Reinsurer Rating

**NONE**

**SCHEDULE T – EXHIBIT OF PREMIUMS WRITTEN**

Current Year to Date - Allocated by States and Territories

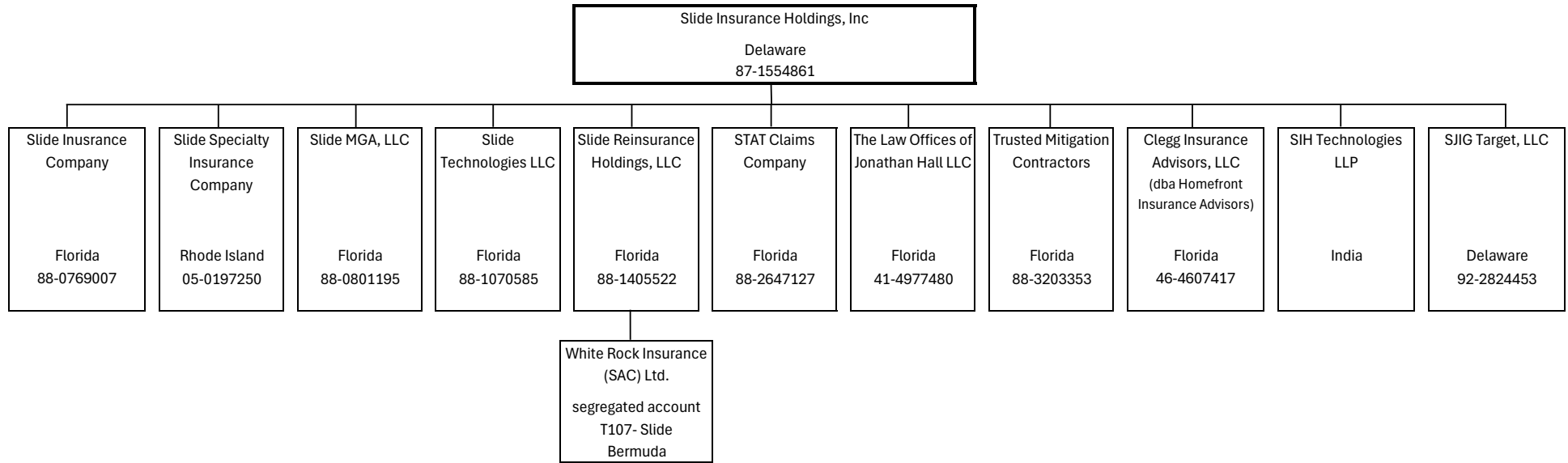
States, Etc.	1	Direct Premiums Written		Direct Losses Paid (Deducting Salvage)		Direct Losses Unpaid	
		2	3	4	5	6	7
		Current Year To Date	Prior Year To Date	Current Year To Date	Prior Year To Date	Current Year To Date	Prior Year To Date
1. Alabama	AL	N					
2. Alaska	AK	N					
3. Arizona	AZ	N					
4. Arkansas	AR	N					
5. California	CA	N					
6. Colorado	CO	N					
7. Connecticut	CT	N					
8. Delaware	DE	N					
9. District of Columbia	DC	N					
10. Florida	FL	N					
11. Georgia	GA	N					
12. Hawaii	HI	N					
13. Idaho	ID	N					
14. Illinois	IL	N					
15. Indiana	IN	N					
16. Iowa	IA	N					
17. Kansas	KS	N					
18. Kentucky	KY	N					
19. Louisiana	LA	N					
20. Maine	ME	N					
21. Maryland	MD	N					
22. Massachusetts	MA	N					
23. Michigan	MI	N					
24. Minnesota	MN	N					
25. Mississippi	MS	N					
26. Missouri	MO	N					
27. Montana	MT	N					
28. Nebraska	NE	N					
29. Nevada	NV	N					
30. New Hampshire	NH	L					
31. New Jersey	NJ	L					
32. New Mexico	NM	N					
33. New York	NY	L					
34. North Carolina	NC	N					
35. North Dakota	ND	N					
36. Ohio	OH	N					
37. Oklahoma	OK	N					
38. Oregon	OR	N					
39. Pennsylvania	PA	N					
40. Rhode Island	RI	L					
41. South Carolina	SC	L					
42. South Dakota	SD	N					
43. Tennessee	TN	N					
44. Texas	TX	N					
45. Utah	UT	N					
46. Vermont	VT	N					
47. Virginia	VA	N					
48. Washington	WA	N					
49. West Virginia	WV	N					
50. Wisconsin	WI	N					
51. Wyoming	WY	N					
52. American Samoa	AS	N					
53. Guam	GU	N					
54. Puerto Rico	PR	N					
55. U.S. Virgin Islands	VI	N					
56. Northern Mariana Islands	MP	N					
57. Canada	CAN	N					
58. Aggregate other alien	OT	XXX					
59. Totals		XXX					
<b>Details of Write-Ins</b>							
58001.		XXX					
58002.		XXX					
58003.		XXX					
58998. Summary of remaining write-ins for Line 58 from overflow page		XXX					
58999. Totals (Lines 58001 through 58003 plus 58998) (Line 58 above)		XXX					

(a) Active Status Counts

1. L – Licensed or Chartered - Licensed insurance carrier or domiciled RRG	5. 4. Q – Qualified - Qualified or accredited reinsurer	–
2. R – Registered – Non-domiciled RRGs	Domestic Surplus Lines Insurer (DSL) – Reporting entities authorized to write surplus lines in the state of domicile	–
3. E – Eligible - Reporting entities eligible or approved to write surplus lines in the state (other than the state of domicile - see DSL)	5. D –	–
	6. N – None of the above - Not allowed to write business in the state	52

# SCHEDULE Y - INFORMATION CONCERNING ACTIVITIES OF INSURER MEMBERS OF A HOLDING COMPANY GROUP

## PART 1 - ORGANIZATIONAL CHART



**SCHEDULE Y**

PART 1A - DETAILS OF INSURANCE HOLDING COMPANY SYSTEM

1	2	3	4	5	6	7	8	9	10	11	12	13	14	15	16
Group Code	Group Name	NAIC Company Code	ID Number	Federal RSSD	CIK	Name of Securities Exchange if Publicly Traded (U.S. or International)	Names of Parent, Subsidiaries Or Affiliates	Domiciliary Location	Relationship to Reporting Entity	Directly Controlled by (Name of Entity/Person)	Type of Control (Ownership, Board, Management, Attorney-in-Fact, Influence, Other)	If Control is Ownership Provide Percentage	Ultimate Controlling Entity(ies) / Person(s)	Is an SCA Filing Required? (Yes/No)	*
5101	Slide Ins Holdings Grp	14931	41-4977480				The Law Offices of Jonathan Hall, LLC	FL	NIA	Slide Insurance Holdings, Inc.	Ownership	100.0	Slide Insurance Holdings, Inc.	NO	
			05-0197250				Slide Specialty Insurance Company	RI	RE	Slide Insurance Holdings, Inc.	Ownership	100.0	Slide Insurance Holdings, Inc.	NO	
			92-2824453				SJIG Target, LLC	DE	NIA	Slide Insurance Holdings, Inc.	Ownership	100.0	Slide Insurance Holdings, Inc.	NO	
			46-4607417				SIH Technologies LLP	IND	NIA	Slide Insurance Holdings, Inc.	Ownership	100.0	Slide Insurance Holdings, Inc.	NO	
5101	Slide Ins Holdings Grp	17227	87-1554861				Clegg Insurance Advisors, LLC	FL	NIA	Slide Insurance Holdings, Inc.	Ownership	100.0	Slide Insurance Holdings, Inc.	NO	
			88-0769007				Slide Insurance Holdings, Inc.	DE	UDP	Bruce Lucas	Board of Directors	40.0	Bruce Lucas	NO	
			88-0801195				Slide Insurance Company	FL	IA	Slide Insurance Holdings, Inc.	Ownership	100.0	Slide Insurance Holdings, Inc.	NO	
			88-1070585				Slide MGA, LLC	FL	NIA	Slide Insurance Holdings, Inc.	Ownership	100.0	Slide Insurance Holdings, Inc.	NO	
			88-1405522				Slide Technologies, LLC	FL	NIA	Slide Insurance Holdings, Inc.	Ownership	100.0	Slide Insurance Holdings, Inc.	NO	
			88-2647127				Slide Reinsurance Holdings, LLC	FL	NIA	Slide Insurance Holdings, Inc.	Ownership	100.0	Slide Insurance Holdings, Inc.	NO	
			88-3203353				STAT Claims Company	FL	NIA	Slide Insurance Holdings, Inc.	Ownership	100.0	Slide Insurance Holdings, Inc.	NO	
							Trusted Mitigation Contractors	FL	NIA	Slide Insurance Holdings, Inc.	Ownership	100.0	Slide Insurance Holdings, Inc.	NO	
Asterisk	Explanation														

**PART 1 – LOSS EXPERIENCE**

Line of Business	Current Year to Date			4 Prior Year to Date Direct Loss Percentage
	1 Direct Premiums Earned	2 Direct Losses Incurred	3 Direct Loss Percentage	
1. Fire				
2.1 Allied lines				
2.2 Multiple peril crop				
2.3 Federal flood				
2.4 Private crop				
2.5 Private flood				
3. Farmowners multiple peril				
4. Homeowners multiple peril				
5.1 Commercial multiple peril (non-liability portion)				
5.2 Commercial multiple peril (liability portion)				
6. Mortgage guaranty				
8. Ocean marine				
9.1 Inland marine				
9.2 Pet insurance				
10. Financial guaranty				
11.1 Medical professional liability - occurrence				
11.2 Medical professional liability - claims made				
12. Earthquake				
13.1 Comprehensive (hospital and medical) individual				
13.2 Comprehensive (hospital and medical) group				
14. Credit accident and health				
15.1 Vision only				
15.2 Dental only				
15.3 Disability income				
15.4 Medicare supplement				
15.5 Medicaid Title XIX				
15.6 Medicare Title XVIII				
15.7 Long-term care				
15.8 Federal employees health benefits plan				
15.9 Other health				
16. Workers' compensation				
17.1 Other liability-occurrence				
17.2 Other liability-claims made				
17.3 Excess workers' compensation				
18.1 Products liability - occurrence				
18.2 Products liability - claims made				
19.1 Private passenger auto no-fault (personal injury protection)				
19.2 Other private passenger auto liability				
19.3 Commercial auto no-fault (personal injury protection)				
19.4 Other commercial auto liability				
21.1 Private passenger auto physical damage				
21.2 Commercial auto physical damage				
22. Aircraft (all perils)				
23. Fidelity				
24. Surety				
26. Burglary and theft				
27. Boiler and machinery				
28. Credit				
29. International				
30. Warranty				
31. Reinsurance - nonproportional assumed property	XXX	XXX	XXX	XXX
32. Reinsurance - nonproportional assumed liability	XXX	XXX	XXX	XXX
33. Reinsurance - nonproportional assumed financial lines	XXX	XXX	XXX	XXX
34. Aggregate write-ins for other lines of business				
35. Totals				
<b>Details of Write-Ins</b>				
3401.				
3402.				
3403.				
3498. Summary of remaining write-ins for Line 34 from overflow page				
3499. Summary of remaining write-ins for Line 34 from overflow page				

NONE

**PART 2 – DIRECT PREMIUMS WRITTEN**

Line of Business		1 Current Quarter	2 Current Year to Date	3 Prior Year Year to Date
1.	Fire .....			
2.1	Allied lines .....			
2.2	Multiple peril crop .....			
2.3	Federal flood .....			
2.4	Private crop .....			
2.5	Private flood .....			
3.	Farmowners multiple peril .....			
4.	Homeowners multiple peril .....			
5.1	Commercial multiple peril (non-liability portion) .....			
5.2	Commercial multiple peril (liability portion) .....			
6.	Mortgage guaranty .....			
8.	Ocean marine .....			
9.1	Inland marine .....			
9.2	Pet insurance .....			
10.	Financial guaranty .....			
11.1	Medical professional liability - occurrence .....			
11.2	Medical professional liability - claims made .....			
12.	Earthquake .....			
13.1	Comprehensive (hospital and medical) individual .....			
13.2	Comprehensive (hospital and medical) group .....			
14.	Credit accident and health .....			
15.1	Vision only .....			
15.2	Dental only .....			
15.3	Disability income .....			
15.4	Medicare supplement .....			
15.5	Medicaid Title XIX .....			
15.6	Medicare Title XVIII .....			
15.7	Long-term care .....			
15.8	Federal employees health benefits plan .....			
15.9	Other health .....			
16.	Workers' compensation .....			
17.1	Other liability occurrence .....			
17.2	Other liability-claims made .....			
17.3	Excess workers' compensation .....			
18.1	Products liability - occurrence .....			
18.2	Products liability - claims made .....			
19.1	Private passenger auto no-fault (personal injury protection) .....			
19.2	Other private passenger auto liability .....			
19.3	Commercial auto no-fault (personal injury protection) .....			
19.4	Other commercial auto liability .....			
21.1	Private passenger auto physical damage .....			
21.2	Commercial auto physical damage .....			
22.	Aircraft (all perils) .....			
23.	Fidelity .....			
24.	Surety .....			
26.	Burglary and theft .....			
27.	Boiler and machinery .....			
28.	Credit .....			
29.	International .....			
30.	Warranty .....			
31.	Reinsurance - nonproportional assumed property .....	XXX	XXX	XXX
32.	Reinsurance - nonproportional assumed liability .....	XXX	XXX	XXX
33.	Reinsurance - nonproportional assumed financial lines .....	XXX	XXX	XXX
34.	Aggregate write-ins for other lines of business .....			
35.	Totals .....			
<b>Details of Write-Ins</b>				
3401.	.....			
3402.	.....			
3403.	.....			
3498.	Summary of remaining write-ins for Line 34 from overflow page .....			
3499.	Summary of remaining write-ins for Line 34 from overflow page .....			

NONE

**PART 3 (\$000 OMITTED)**  
**LOSS AND LOSS ADJUSTMENT EXPENSE RESERVES SCHEDULE**

	1	2	3	4	5	6	7	8	9	10	11	12	13
Years in Which Losses Occurred	Prior Year End Known Case Loss and LAE Reserves	Prior Year End IBNR Loss and LAE Reserves	Total Prior Year End Loss and LAE Reserves (Cols. 1+2)	2026 Loss and LAE Payments on Claims Reported as of Prior Year End	2026 Loss and LAE Payments on Claims Unreported as of Prior Year End	Total 2026 Loss and LAE Payments (Cols. 4+5)	Q.S. Date Known Case Loss and LAE Reserves on Claims Reported and Open as of Prior Year End	Q.S. Date Known Case Loss and LAE Reserves on Claims Reported or Reopened Subsequent to Prior Year End	Q.S. Date IBNR Loss and LAE Reserves	Total Q.S. Loss and LAE Reserves (Cols.7+8+9)	Prior Year-End Known Case Loss and LAE Reserves Developed (Savings) / Deficiency (Cols.4+7 minus Col. 1)	Prior Year-End IBNR Loss and LAE Reserves Developed (Savings) / Deficiency (Cols. 5+8+9 minus Col. 2)	Prior Year-End Total Loss and LAE Reserve Developed (Savings) / Deficiency (Cols. 11+12)
1. 2023 + Prior.....													
2. 2024.....													
3. Subtotals 2024 + prior.....													
4. 2025.....													
5. Subtotals 2025 + prior.....													
6. 2026.....	XXX	XXX	XXX	XXX			XXX				XXX	XXX	XXX
7. Totals.....													
8. Prior year-end's surplus as regards policyholders.....	50,249										Col. 11, Line 7 As % of Col. 1, Line 7	Col. 12, Line 7 As % of Col. 2, Line 7	Col. 13, Line 7 As % of Col. 3, Line 7
											%	%	%
													Col. 13, Line 7 / Line 8
													%

**SUPPLEMENTAL EXHIBITS AND SCHEDULES INTERROGATORIES**

The following supplemental reports are required to be filed as part of your statement filing. However, in the event that your company does not transact the type of business for which the special report must be filed, your response of **NO** to the specific interrogatory will be accepted in lieu of filing a "NONE" report and a bar code will be printed below. If the supplement is required of your company but is not being filed for whatever reason enter **SEE EXPLANATION** and provide an explanation following the interrogatory questions.

	Response
1. Will the Trusteed Surplus Statement be filed with the state of domicile and the NAIC with this statement?.....	NO.....
2. Will Supplement A to Schedule T (Medical Professional Liability Supplement) be filed with this statement?.....	NO.....
3. Will the Medicare Part D Coverage Supplement be filed with the state of domicile and the NAIC with this statement?.....	NO.....
4. Will the Director and Officer Insurance Coverage Supplement be filed with the state of domicile and the NAIC with this statement?.....	NO.....

**August Filing**

5. Will the regulator-only (non-public) Communication of Internal Control Related Matters Noted in Audit be filed with the state of domicile and electronically with the NAIC (as a regulator-only non-public document) by August 1? The response for 1st and 3rd quarters should be N/A. A NO response resulting with a bar code is only appropriate in the 2nd quarter.....	N/A.....
---	----------

**EXPLANATION:**

1. ....
2. Business not written.....
3. ....
4. ....
5. ....

**BARCODES:**

1.   
1 4 9 3 1 2 0 2 6 4 9 0 0 0 0 1
2.   
1 4 9 3 1 2 0 2 6 4 5 5 0 0 0 1
3.   
1 4 9 3 1 2 0 2 6 3 6 5 0 0 0 1
4.   
1 4 9 3 1 2 0 2 6 5 0 5 0 0 0 1
5. ....

**OVERFLOW PAGE FOR WRITE-INS**

(SI-01) Schedule A - Verification - Real Estate

**NONE**

(SI-01) Schedule B - Verification - Mortgage Loans

**NONE**

(SI-01) Schedule BA - Verification - Other Long-Term Invested Assets

**NONE**

(SI-01) Schedule D - Verification - Bonds and Stocks

**NONE**

(SI-02) Schedule D - Part 1B

**NONE**

(SI-03) Schedule DA - Part 1

**NONE**

(SI-03) Schedule DA - Verification - Short-Term Investments

**NONE**

(SI-04) Schedule DB - Part A - Verification - Options, Caps, Floors, Collars, Swaps and Forwards

**NONE**

(SI-04) Schedule DB - Part B - Verification - Futures Contracts

**NONE**

(SI-05) Schedule DB - Part C - Section 1

**NONE**

(SI-06) Schedule DB - Part C - Section 2

**NONE**

(SI-07) Schedule DB - Verification

**NONE**

**SCHEDULE E – PART 2 – VERIFICATION**  
(Cash Equivalents)

	1	2
	Year to Date	Prior Year Ended December 31
1. Book/adjusted carrying value, December 31 of prior year.....	-	378,761
2. Cost of cash equivalents acquired.....		
3. Accrual of discount.....		
4. Unrealized valuation increase / (decrease).....		
5. Total gain (loss) on disposals.....		
6. Deduct consideration received on disposals.....		378,761
7. Deduct amortization of premium.....		
8. Total foreign exchange change in book / adjusted carrying value.....		
9. Deduct current year's other-than-temporary impairment recognized.....		
10. Book/adjusted carrying value at end of current period (Lines 1+2+3+4+5-6-7+8-9).....	-	-
11. Deduct total nonadmitted amounts.....		
12. Statement value at end of current period (Line 10 minus Line 11).....	-	-

(E-01) Schedule A - Part 2

**NONE**

(E-01) Schedule A - Part 3

**NONE**

(E-02) Schedule B - Part 2

**NONE**

(E-02) Schedule B - Part 3

**NONE**

(E-03) Schedule BA - Part 2

**NONE**

(E-03) Schedule BA - Part 3

**NONE**

(E-04) Schedule D - Part 3

**NONE**

(E-05) Schedule D - Part 4

**NONE**

(E-06) Schedule DB - Part A - Section 1

**NONE**

(E-06) Schedule DB - Part A - Section 1 - Description of Hedged Risk(s)

**NONE**

(E-06) Schedule DB - Part A - Section 1 - Financial or Economic Impact of The Hedge at the End of the Reporting Period

**NONE**

(E-07) Schedule DB - Part B - Section 1

**NONE**

(E-07) Schedule DB - Part B - Section 1 - Broker Name

**NONE**

(E-07) Schedule DB - Part B - Section 1 - Description of Hedged Risk(s)

**NONE**

(E-07) Schedule DB - Part B - Section 1 - Financial or Economic Impact of The Hedge at the End of the Reporting Period

**NONE**

(E-08) Schedule DB - Part D - Section 1

**NONE**

(E-09) Schedule DB - Part D - Section 2 - Collateral Pledged By Reporting Entity

**NONE**

(E-09) Schedule DB - Part D - Section 2 - Collateral Pledged To Reporting Entity

**NONE**

(E-10) Schedule DB - Part E

**NONE**

(E-11) Schedule DL - Part 1

**NONE**

(E-12) Schedule DL - Part 2

**NONE**

**SCHEDULE E - PART 1 - CASH**

Month End Depository Balances

1 Depository	2 Restricted Asset Code	3 Rate of Interest	4 Amount of Interest Received During Current Quarter	5 Amount of Interest Accrued at Current Statement Date	Book Balance at End of Each Month During Current Quarter			9 *
					6 First Month	7 Second Month	8 Third Month	
Collateral Securities – DOI - South Carolina	SD	3.070	1,067		125,000	126,038	126,067	XXX
Regions Bank - Operating – Tampa, FL		2.950	365,252		50,326,094	50,432,349	50,439,534	XXX
Regions Bank - Premium Trust – Tampa, FL					888	888	888	XXX
Regions Bank - Claims – Tampa, FL					878	878	878	XXX
0199998 – Deposits in depositories that do not exceed the allowable limit in any one depository (see Instructions) - open depositories								XXX
0199999 – Total open depositories				366,319	50,452,860	50,560,153	50,567,367	XXX
0299998 – Deposits in depositories that do not exceed the allowable limit in any one depository (see Instructions) - suspended depositories								XXX
0299999 – Total suspended depositories								XXX
0399999 – Total cash on deposit				366,319	50,452,860	50,560,153	50,567,367	XXX
0499999 – Cash in company's office				XXX	XXX			XXX
0599999 – Total				366,319	50,452,860	50,560,153	50,567,367	XXX

**SCHEDULE E - PART 2 - CASH EQUIVALENTS**

Show Investments Owned End of Current Quarter

1 CUSIP	2 Description	3 Restricted Asset Code	4 Date Acquired	5 Stated Rate of Interest	6 Maturity Date	7 Book / Adjusted Carrying Value	8 Amount of Interest Due and Accrued	9 Amount Received During Year
8609999999 – Total cash equivalents.....								

**NONE**