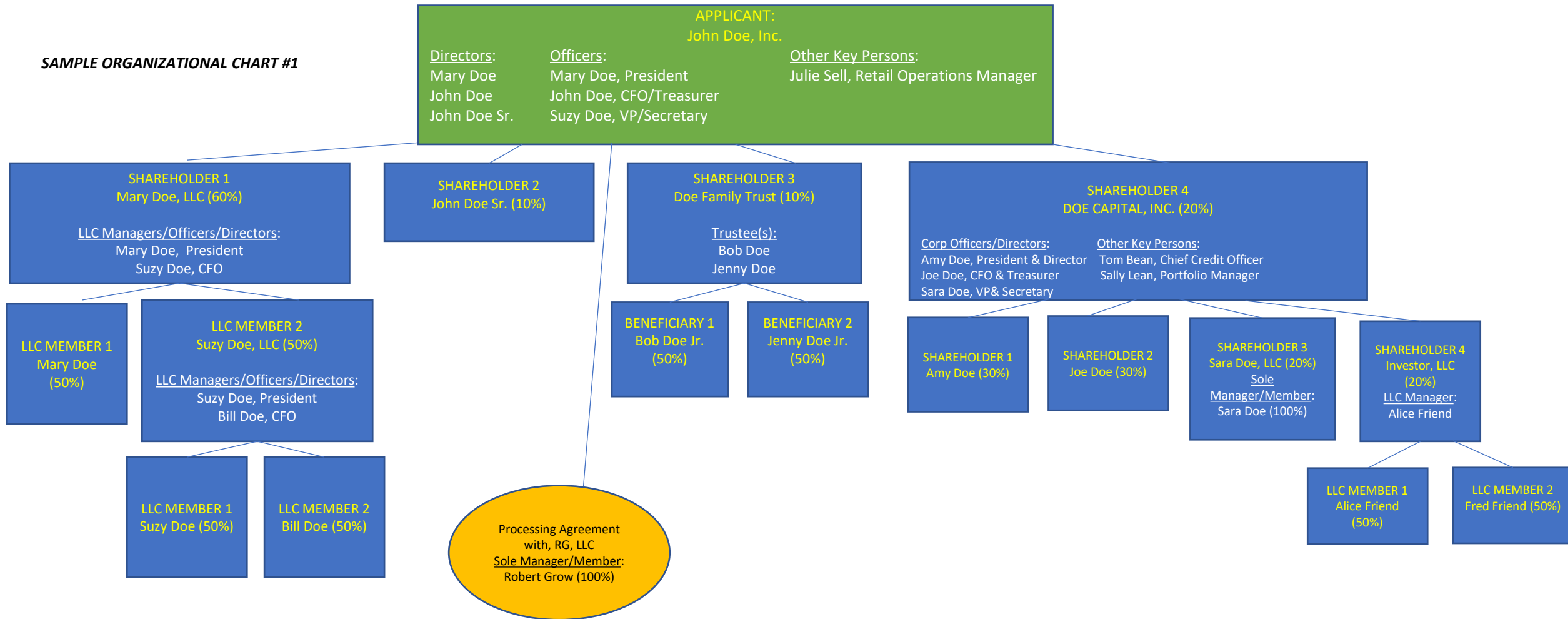
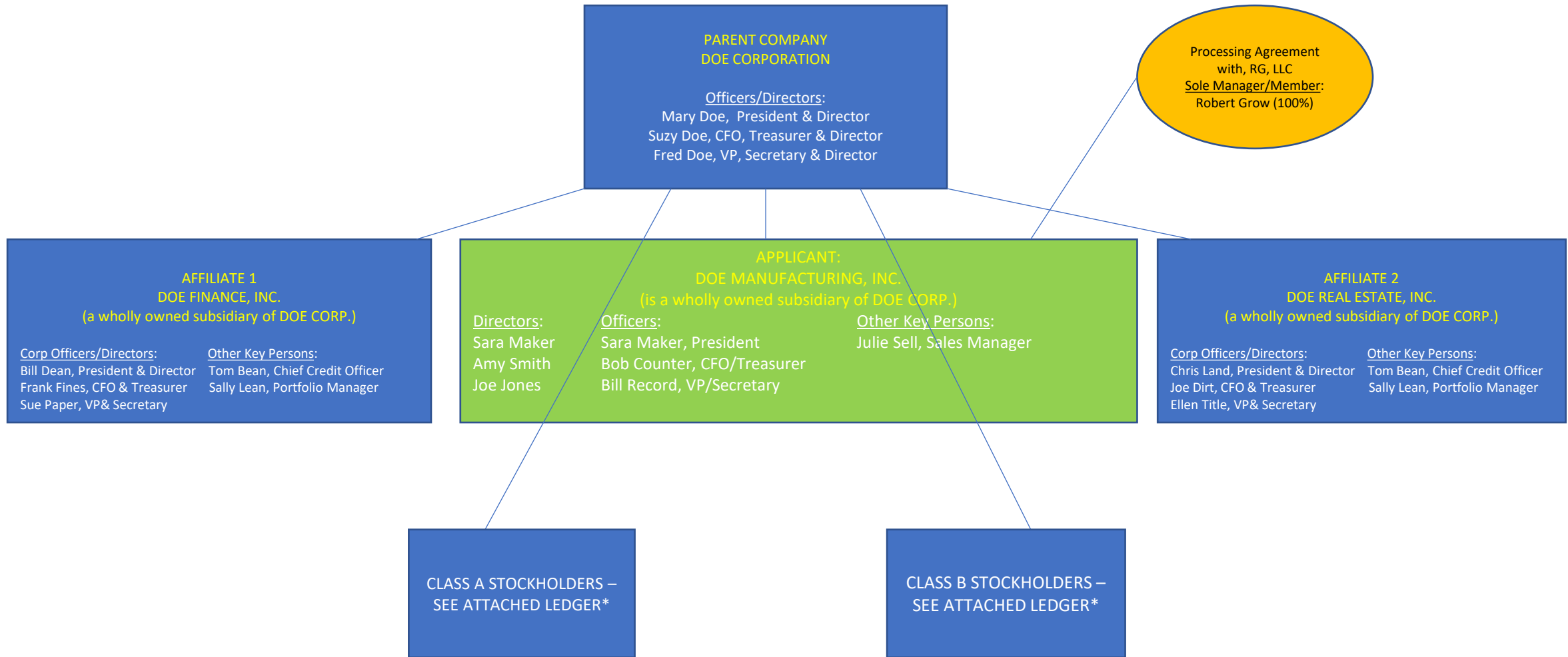


SAMPLE ORGANIZATIONAL CHART #1



If any interest is held by a corporation, limited liability company, partnership, trust or other entity, continue to add boxes that delineate next level interest holders until the organization chart reflects all interests/roles down to the individual person level.

SAMPLE ORGANIZATIONAL CHART #2



*The list of stockholders must be to the individual person level. If any stock interest is held by a corporation, limited liability company, partnership, trust or other entity, the list must also include interest holders in each entity until the list includes all interest holders to the individual person level.