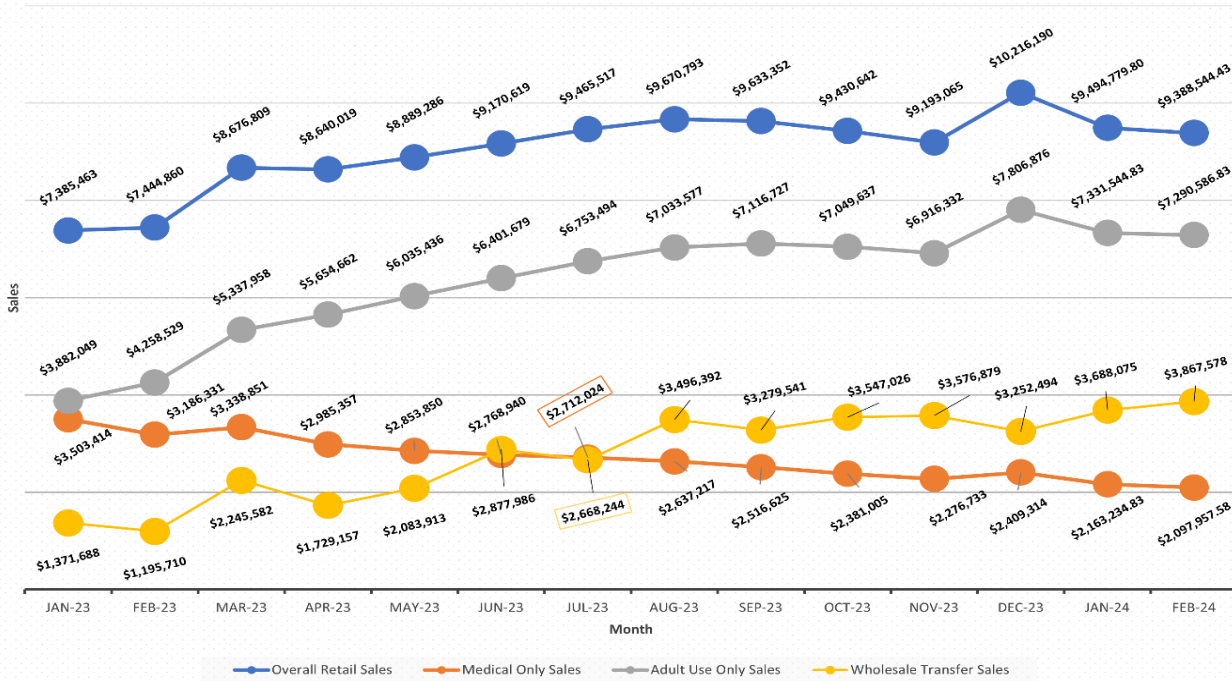


2023-2024 Compassion Center Retail Sales



The Office of Cannabis Regulation is providing this aggregated data for public informational purposes only and is subject to ongoing correction. Any analyses or policy recommendations which utilize data contained herein by third-parties do not represent the views of the Department of Business Regulation.

**** December 2022 launched recreational cannabis sales in Rhode Island and the implementation of Metrc, our seed-to-sale tracking software. Currently Metrc's data is incomplete, as more functionality is brought online, the more complete and reliable data will be. ****

Affiliated=Products taken in from a CCs vertically integra **Unaffiliated**=Products taken in from an independent Cultivator

Item (eaches)	Jan-24		Feb-24		Mar-24		Apr-24		May-24		Jun-24		Jul-24	
	Affiliated	Unaffiliated	Affiliated	Unaffiliated	Affiliated	Unaffiliated	Affiliated	Unaffiliated	Affiliated	Unaffiliated	Affiliated	Unaffiliated	Affiliated	Unaffiliated
Pre Packaged Bud (1g, 3.5g, 7g...)	91,742	89,112												
Concentrates	5,740	7,556												
Edibles	43,117	44,490												
Infused Non-edible	1,123	150												
Raw Pre Rolls	53,394	110,095												
Infused Pre Rolls	2,049	11,349												
Tinctures	705	430												
Topicals	477	1,413												
Vape Cart	43,959	21,872												

The Office of Cannabis Regulation is providing this aggregated data for public informational purposes only and is subject to ongoing correction. Any analyses or policy recommendations which utilize data contained herein by third-parties do not represent the views of the Department of Business Regulation.

**** December 2022 launched recreational cannabis sales in Rhode Island and the implementation of Metrc, our seed-to-sale tracking software. Currently Metrc's data is incomplete, as more functionality is brought online, the more complete and reliable data will be. ****