

ANNUAL STATEMENT

OF THE

Beacon Mutual Insurance Company

of **Warwick**

STATE OF **Rhode Island**

TO THE

Insurance Department

OF THE

State of Rhode Island

FOR THE YEAR ENDED

December 31, 2019

PROPERTY AND CASUALTY

2019



ANNUAL STATEMENT

For the Year Ended December 31, 2019
OF THE CONDITION AND AFFAIRS OF THE

The Beacon Mutual Insurance Company

NAIC Group Code 3490 3490 **NAIC Company Code** 24017 **Employer's ID Number** 05-0458697
(Current Period) (Prior Period)

Organized under the Laws of Rhode Island, **State of Domicile or Port of Entry** RI
Country of Domicile US

Incorporated/Organized July 11, 1990 **Commenced Business** August 12, 1992

Statutory Home Office One Beacon Centre, Warwick, RI, US 02886-1378
(Street and Number) (City or Town, State, Country and Zip Code)

Main Administrative Office One Beacon Centre
(Street and Number)
Warwick, RI, US 02886-1378 401-825-2667
(City or Town, State, Country and Zip Code) (Area Code) (Telephone Number)

Mail Address One Beacon Centre, Warwick, RI, US 02886-1378
(Street and Number or P.O. Box) (City or Town, State, Country and Zip Code)

Primary Location of Books and Records One Beacon Centre Warwick, RI, US 02886-1378 401-825-2667
(Street and Number) (City or Town, State, Country and Zip Code) (Area Code) (Telephone Number)

Internet Web Site Address www.beaconmutual.com

Statutory Statement Contact Ann Lazzareschi 401-825-2621
(Name) (Area Code) (Telephone Number) (Extension)
alazzareschi@beaconmutual.com 401-825-2659
(E-Mail Address) (Fax Number)

OFFICERS

	Name	Title
1.	Brian Joseph Spero	President & CEO
2.	Amy Clark Vitale	Vice President, General Counsel & Assistant Secretary
3.	Cynthia Lee Lawlor	Chief Financial Officer

VICE-PRESIDENTS

Name	Title	Name	Title
Pamela Lee Alarie	Vice President	Robert Glenn DeOrsey	Vice President
Michael Dennis Lynch	Vice President	Rajani Mahadevan	EVP & COO
James Wallace Moody Jr	Vice President	Theresa Joanna Keegan	Asst Vice President
David Michael Blair #	Vice President		

DIRECTORS OR TRUSTEES

Harry Robert Bacon	Raymond Christopher Coia	Brian Joseph Spero	Timothy Ludger Byrne
Melba Depena Affigne #	Linda D'Amaro Rossi	Kate Coyne-McCoy	Bradford Alan Dean
Steven Issa			

State of Rhode Island

County of Kent ss

The officers of this reporting entity being duly sworn, each depose and say that they are the described officers of said reporting entity, and that on the reporting period stated above, all of the herein described assets were the absolute property of the said reporting entity, free and clear from any liens or claims thereon, except as herein stated, and that this statement, together with related exhibits, schedules and explanations therein contained, annexed or referred to, is a full and true statement of all the assets and liabilities and of the condition and affairs of the said reporting entity as of the reporting period stated above, and of its income and deductions therefrom for the period ended, and have been completed in accordance with the NAIC Annual Statement Instructions and Accounting Practices and Procedures manual except to the extent that: (1) state law may differ; or, (2) that state rules or regulations require differences in reporting not related to accounting practices and procedures, according to the best of their information, knowledge and belief, respectively. Furthermore, the scope of this attestation by the described officers also includes the related corresponding electronic filing with the NAIC, when required, that is an exact copy (except for formatting differences due to electronic filing) of the enclosed statement. The electronic filing may be requested by various regulators in lieu of or in addition to the enclosed statement.

 (Signature)
 Brian Joseph Spero

 (Printed Name)
 1.

 President & CEO

 (Title)

 (Signature)
 Amy Clark Vitale

 (Printed Name)
 2.

 Vice President, General Counsel & Assistant Secretary

 (Title)

Subscribed and sworn to (or affirmed) before me this on this _____ day of _____, 2020, by

- a. Is this an original filing? Yes No
- b. If no: 1. State the amendment number _____
2. Date filed _____
3. Number of pages attached _____

ASSETS

	Current Year			Prior Year
	1	2	3	4
	Assets	Nonadmitted Assets	Net Admitted Assets (Cols. 1 - 2)	Net Admitted Assets
1. Bonds (Schedule D)	299,841,580		299,841,580	304,273,942
2. Stocks (Schedule D):				
2.1 Preferred stocks	7,449,412		7,449,412	8,670,981
2.2 Common stocks	50,516,215		50,516,215	35,488,747
3. Mortgage loans on real estate (Schedule B):				
3.1 First liens				
3.2 Other than first liens				
4. Real estate (Schedule A):				
4.1 Properties occupied by the company (less \$ 0 encumbrances)	9,998,067		9,998,067	10,371,176
4.2 Properties held for the production of income (less \$ 0 encumbrances)				
4.3 Properties held for sale (less \$ 0 encumbrances)				
5. Cash (\$ 7,153,584, Schedule E - Part 1), cash equivalents (\$ 12,883,024, Schedule E - Part 2), and short-term investments (\$ 0, Schedule DA)	20,036,609		20,036,609	14,344,714
6. Contract loans (including \$ 0 premium notes)				
7. Derivatives (Schedule DB)				
8. Other invested assets (Schedule BA)	18,466		18,466	19,344
9. Receivables for securities	151,964		151,964	984,957
10. Securities lending reinvested collateral assets (Schedule DL)				
11. Aggregate write-ins for invested assets				
12. Subtotals, cash and invested assets (Lines 1 to 11)	388,012,313		388,012,313	374,153,861
13. Title plants less \$ 0 charged off (for Title insurers only)				
14. Investment income due and accrued	2,690,891		2,690,891	2,943,425
15. Premiums and considerations:				
15.1 Uncollected premiums and agents' balances in the course of collection	1,788,636	306,725	1,481,911	2,230,869
15.2 Deferred premiums, agents' balances and installments booked but deferred and not yet due (including \$ 2,559,300 earned but unbilled premiums)	36,791,093	6,855	36,784,238	38,294,545
15.3 Accrued retrospective premiums (\$ 0) and contracts subject to redetermination (\$ 0)				
16. Reinsurance:				
16.1 Amounts recoverable from reinsurers	645,860		645,860	278,153
16.2 Funds held by or deposited with reinsured companies				
16.3 Other amounts receivable under reinsurance contracts				
17. Amounts receivable relating to uninsured plans	70,387		70,387	
18.1 Current federal and foreign income tax recoverable and interest thereon				
18.2 Net deferred tax asset				
19. Guaranty funds receivable or on deposit				
20. Electronic data processing equipment and software	1,704,929	1,423,843	281,086	313,011
21. Furniture and equipment, including health care delivery assets (\$ 0)	221,435	221,435		
22. Net adjustment in assets and liabilities due to foreign exchange rates				
23. Receivables from parent, subsidiaries and affiliates				63,766
24. Health care (\$ 0) and other amounts receivable				
25. Aggregate write-ins for other-than-invested assets	11,868,146	4,034,799	7,833,347	2,197,285
26. Total assets excluding Separate Accounts, Segregated Accounts and Protected Cell Accounts (Lines 12 to 25)	443,793,690	5,993,657	437,800,033	420,474,915
27. From Separate Accounts, Segregated Accounts and Protected Cell Accounts				
28. Total (Lines 26 and 27)	443,793,690	5,993,657	437,800,033	420,474,915

DETAILS OF WRITE-IN LINES				
1101.				
1102.				
1103.				
1198. Summary of remaining write-ins for Line 11 from overflow page				
1199. Totals (Lines 1101 through 1103 plus 1198) (Line 11 above)				
2501. Transferable State Tax Credits	7,617,661		7,617,661	2,067,936
2502. Prepaid Expenses	3,993,288	3,993,288		
2503. SERP Account	206,133		206,133	108,860
2598. Summary of remaining write-ins for Line 25 from overflow page	51,064	41,511	9,553	20,489
2599. Totals (Lines 2501 through 2503 plus 2598) (Line 25 above)	11,868,146	4,034,799	7,833,347	2,197,285

NONE

LIABILITIES, SURPLUS AND OTHER FUNDS

	1	2
	Current Year	Prior Year
1. Losses (Part 2A, Line 35, Column 8)	158,792,818	156,013,160
2. Reinsurance payable on paid losses and loss adjustment expenses (Schedule F, Part 1, Column 6)	5,218	8,786
3. Loss adjustment expenses (Part 2A, Line 35, Column 9)	24,032,624	24,006,297
4. Commissions payable, contingent commissions and other similar charges	5,973,285	5,419,587
5. Other expenses (excluding taxes, licenses and fees)	8,377,211	8,059,732
6. Taxes, licenses and fees (excluding federal and foreign income taxes)	7,193,408	7,537,297
7.1 Current federal and foreign income taxes (including \$ 0 on realized capital gains (losses))		
7.2 Net deferred tax liability		
8. Borrowed money \$ 0 and interest thereon \$ 0		
9. Unearned premiums (Part 1A, Line 38, Column 5) (after deducting unearned premiums for ceded reinsurance of \$ 80,321 and including warranty reserves of \$ 0 and accrued accident and health experience rating refunds including \$ 0 for medical loss ratio rebate per the Public Health Service Act)	58,465,479	61,924,620
10. Advance premium	3,020,246	2,878,036
11. Dividends declared and unpaid:		
11.1 Stockholders		
11.2 Policyholders	6,000,000	3,182
12. Ceded reinsurance premiums payable (net of ceding commissions)	95,722	135,908
13. Funds held by company under reinsurance treaties (Schedule F, Part 3, Column 20)		
14. Amounts withheld or retained by company for account of others	1,051,017	234,874
15. Remittances and items not allocated	113,214	39,168
16. Provision for reinsurance (including \$ 0 certified) (Schedule F, Part 3 Column 78)		
17. Net adjustments in assets and liabilities due to foreign exchange rates		
18. Drafts outstanding		
19. Payable to parent, subsidiaries and affiliates	20,581	
20. Derivatives		
21. Payable for securities		
22. Payable for securities lending		
23. Liability for amounts held under uninsured plans		
24. Capital notes \$ 0 and interest thereon \$ 0		
25. Aggregate write-ins for liabilities	411,966	577,020
26. Total liabilities excluding protected cell liabilities (Lines 1 through 25)	273,552,789	266,837,667
27. Protected cell liabilities		
28. Total liabilities (Lines 26 and 27)	273,552,789	266,837,667
29. Aggregate write-ins for special surplus funds		
30. Common capital stock		
31. Preferred capital stock		
32. Aggregate write-ins for other-than-special surplus funds	20,758,685	20,758,685
33. Surplus notes		
34. Gross paid in and contributed surplus		
35. Unassigned funds (surplus)	143,488,559	132,878,563
36. Less treasury stock, at cost:		
36.1 0 shares common (value included in Line 30 \$ 0)		
36.2 0 shares preferred (value included in Line 31 \$ 0)		
37. Surplus as regards policyholders (Lines 29 to 35, less 36) (Page 4, Line 39)	164,247,244	153,637,248
38. Totals (Page 2, Line 28, Col. 3)	437,800,033	420,474,915

DETAILS OF WRITE-IN LINES		
2501. Deferred Gain - CH Investments	284,510	298,285
2502. Miscellaneous Liabilities	127,456	278,735
2503.		
2598. Summary of remaining write-ins for Line 25 from overflow page		
2599. Totals (Lines 2501 through 2503 plus 2598) (Line 25 above)	411,966	577,020
2901.		
2902.		
2903.		
2998. Summary of remaining write-ins for Line 29 from overflow page		
2999. Totals (Lines 2901 through 2903 plus 2998) (Line 29 above)		
3201. Capital assessment by RI Dept of Labor to provide residual market	20,758,685	20,758,685
3202.		
3203.		
3298. Summary of remaining write-ins for Line 32 from overflow page		
3299. Totals (Lines 3201 through 3203 plus 3298) (Line 32 above)	20,758,685	20,758,685

NONE

STATEMENT OF INCOME

	1	2
	Current Year	Prior Year
UNDERWRITING INCOME		
1. Premiums earned (Part 1, Line 35, Column 4)	121,135,431	122,669,169
DEDUCTIONS:		
2. Losses incurred (Part 2, Line 35, Column 7)	69,082,104	74,760,399
3. Loss adjustment expenses incurred (Part 3, Line 25, Column 1)	19,624,639	20,833,857
4. Other underwriting expenses incurred (Part 3, Line 25, Column 2)	37,196,015	36,956,872
5. Aggregate write-ins for underwriting deductions		
6. Total underwriting deductions (Lines 2 through 5)	125,902,758	132,551,128
7. Net income of protected cells		
8. Net underwriting gain (loss) (Line 1 minus Line 6 plus Line 7)	(4,767,327)	(9,881,959)
INVESTMENT INCOME		
9. Net investment income earned (Exhibit of Net Investment Income, Line 17)	12,877,733	12,673,123
10. Net realized capital gains (losses) less capital gains tax of \$ 0 (Exhibit of Capital Gains (Losses))	5,416,967	2,072,838
11. Net investment gain (loss) (Lines 9 + 10)	18,294,700	14,745,961
OTHER INCOME		
12. Net gain or (loss) from agents' or premium balances charged off (amount recovered \$ 378,480 amount charged off \$ 1,254,301)	(875,821)	(782,133)
13. Finance and service charges not included in premiums	108,165	138,525
14. Aggregate write-ins for miscellaneous income	237,555	(40,048)
15. Total other income (Lines 12 through 14)	(530,101)	(683,656)
16. Net income before dividends to policyholders, after capital gains tax and before all other federal and foreign income taxes (Lines 8 + 11 + 15)	12,997,272	4,180,346
17. Dividends to policyholders	6,000,000	
18. Net income, after dividends to policyholders, after capital gains tax and before all other federal and foreign income taxes (Line 16 minus Line 17)	6,997,272	4,180,346
19. Federal and foreign income taxes incurred		
20. Net income (Line 18 minus Line 19) (to Line 22)	6,997,272	4,180,346
CAPITAL AND SURPLUS ACCOUNT		
21. Surplus as regards policyholders, December 31 prior year (Page 4, Line 39, Column 2)	153,637,248	152,992,329
22. Net income (from Line 20)	6,997,272	4,180,346
23. Net transfers (to) from Protected Cell accounts		
24. Change in net unrealized capital gains or (losses) less capital gains tax of \$ 0	5,251,861	(4,957,330)
25. Change in net unrealized foreign exchange capital gain (loss)		
26. Change in net deferred income tax		
27. Change in nonadmitted assets (Exhibit of Nonadmitted Assets, Line 28, Col. 3)	(1,639,137)	1,418,903
28. Change in provision for reinsurance (Page 3, Line 16, Column 2 minus Column 1)		3,000
29. Change in surplus notes		
30. Surplus (contributed to) withdrawn from protected cells		
31. Cumulative effect of changes in accounting principles		
32. Capital changes:		
32.1 Paid in		
32.2 Transferred from surplus (Stock Dividend)		
32.3 Transferred to surplus		
33. Surplus adjustments:		
33.1 Paid in		
33.2 Transferred to capital (Stock Dividend)		
33.3 Transferred from capital		
34. Net remittances from or (to) Home Office		
35. Dividends to stockholders		
36. Change in treasury stock (Page 3, Lines 36.1 and 36.2, Column 2 minus Column 1)		
37. Aggregate write-ins for gains and losses in surplus		
38. Change in surplus as regards policyholders for the year (Lines 22 through 37)	10,609,996	644,919
39. Surplus as regards policyholders, December 31 current year (Lines 21 plus Line 38) (Page 3, Line 37)	164,247,244	153,637,248

DETAILS OF WRITE-IN LINES		
0501.		
0502.		
0503.		
0598. Summary of remaining write-ins for Line 05 from overflow page	NONE	
0599. Totals (Lines 0501 through 0503 plus 0598) (Line 05 above)		
1401. Miscellaneous Income (Loss)	267,090	(40,758)
1402. Gain (Loss) on Disposal of Assets	1,745	550
1403. Impairment Recovery - Subsidiary		35,322
1498. Summary of remaining write-ins for Line 14 from overflow page	(31,280)	(35,162)
1499. Totals (Lines 1401 through 1403 plus 1498) (Line 14 above)	237,555	(40,048)
3701.		
3702.		
3703.		
3798. Summary of remaining write-ins for Line 37 from overflow page	NONE	
3799. Totals (Lines 3701 through 3703 plus 3798) (Line 37 above)		

CASH FLOW

	1	2
Cash from Operations	Current Year	Prior Year
1. Premiums collected net of reinsurance	120,207,103	121,632,809
2. Net investment income	14,438,890	13,917,584
3. Miscellaneous income	(530,102)	(683,656)
4. Total (Lines 1 through 3)	134,115,891	134,866,737
5. Benefit and loss related payments	66,657,779	59,470,241
6. Net transfers to Separate Accounts, Segregated Accounts and Protected Cell Accounts		
7. Commissions, expenses paid and aggregate write-ins for deductions	56,346,256	56,555,771
8. Dividends paid to policyholders	3,182	392,418
9. Federal and foreign income taxes paid (recovered) net of \$ 0 tax on capital gains (losses)		
10. Total (Lines 5 through 9)	123,007,217	116,418,430
11. Net cash from operations (Line 4 minus Line 10)	11,108,674	18,448,307
Cash from Investments		
12. Proceeds from investments sold, matured or repaid:		
12.1 Bonds	62,150,005	57,697,146
12.2 Stocks	83,366,885	50,660,133
12.3 Mortgage loans		
12.4 Real estate		
12.5 Other invested assets		
12.6 Net gains or (losses) on cash, cash equivalents and short-term investments		
12.7 Miscellaneous proceeds	832,994	
12.8 Total investment proceeds (Lines 12.1 to 12.7)	146,349,884	108,357,279
13. Cost of investments acquired (long-term only):		
13.1 Bonds	56,311,685	45,001,650
13.2 Stocks	88,855,510	77,891,184
13.3 Mortgage loans		
13.4 Real estate		7,260
13.5 Other invested assets		
13.6 Miscellaneous applications		630,033
13.7 Total investments acquired (Lines 13.1 to 13.6)	145,167,195	123,530,127
14. Net increase (decrease) in contract loans and premium notes		
15. Net cash from investments (Line 12.8 minus Line 13.7 minus Line 14)	1,182,689	(15,172,848)
Cash from Financing and Miscellaneous Sources		
16. Cash provided (applied):		
16.1 Surplus notes, capital notes		
16.2 Capital and paid in surplus, less treasury stock		
16.3 Borrowed funds		
16.4 Net deposits on deposit-type contracts and other insurance liabilities		
16.5 Dividends to stockholders		
16.6 Other cash provided (applied)	(6,599,468)	(559,424)
17. Net cash from financing and miscellaneous sources (Lines 16.1 to 16.4 minus Line 16.5 plus Line 16.6)	(6,599,468)	(559,424)
RECONCILIATION OF CASH, CASH EQUIVALENTS AND SHORT-TERM INVESTMENTS		
18. Net change in cash, cash equivalents and short-term investments (Line 11, plus Lines 15 and 17)	5,691,895	2,716,035
19. Cash, cash equivalents and short-term investments:		
19.1 Beginning of year	14,344,714	11,628,679
19.2 End of year (Line 18 plus Line 19.1)	20,036,609	14,344,714

Note: Supplemental disclosures of cash flow information for non-cash transactions:

20.0001		
20.0002		
20.0003		

UNDERWRITING AND INVESTMENT EXHIBIT

PART 1 – PREMIUMS EARNED

Line of Business	1 Net Premiums Written per Column 6, Part 1B	2 Unearned Premiums Dec. 31 Prior Year- per Col. 3, Last Year's Part 1	3 Unearned Premiums Dec. 31 Current Year- per Col. 5 Part 1A	4 Premiums Earned During Year (Cols. 1 + 2 - 3)
1. Fire				
2. Allied lines				
3. Farmowners multiple peril				
4. Homeowners multiple peril				
5. Commercial multiple peril				
6. Mortgage guaranty				
8. Ocean marine				
9. Inland marine				
10. Financial guaranty				
11.1 Medical professional liability—occurrence				
11.2 Medical professional liability—claims-made				
12. Earthquake				
13. Group accident and health				
14. Credit accident and health (group and individual)				
15. Other accident and health				
16. Workers' compensation	117,676,290	61,924,620	58,465,478	121,135,432
17.1 Other liability—occurrence				
17.2 Other liability—claims-made				
17.3 Excess workers' compensation				
18.1 Products liability—occurrence				
18.2 Products liability—claims-made				
19.1,19.2 Private passenger auto liability				
19.3,19.4 Commercial auto liability				
21. Auto physical damage				
22. Aircraft (all perils)				
23. Fidelity				
24. Surety				
26. Burglary and theft				
27. Boiler and machinery				
28. Credit				
29. International				
30. Warranty				
31. Reinsurance-nonproportional assumed property				
32. Reinsurance-nonproportional assumed liability				
33. Reinsurance-nonproportional assumed financial lines				
34. Aggregate write-ins for other lines of business				
35. TOTALS	117,676,290	61,924,620	58,465,478	121,135,432

DETAILS OF WRITE-IN LINES				
3401.				
3402.				
3403.				
3498. Sum of remaining write-ins for Line 34 from overflow page				
3499. Totals (Lines 3401 through 3403 plus 3498) (Line 34 above)				

NONE

UNDERWRITING AND INVESTMENT EXHIBIT

PART 1A – RECAPITULATION OF ALL PREMIUMS

Line of Business	1 Amount Unearned (Running One Year or Less from Date of Policy) (a)	2 Amount Unearned (Running More Than One Year from Date of Policy) (a)	3 Earned but Unbilled Premium	4 Reserve for Rate Credits and Retrospective Adjustments Based on Experience	5 Total Reserve for Unearned Premiums Cols. 1 + 2 + 3 + 4
1. Fire					
2. Allied lines					
3. Farmowners multiple peril					
4. Homeowners multiple peril					
5. Commercial multiple peril					
6. Mortgage guaranty					
8. Ocean marine					
9. Inland marine					
10. Financial guaranty					
11.1 Medical professional liability—occurrence					
11.2 Medical professional liability—claims-made					
12. Earthquake					
13. Group accident and health					
14. Credit accident and health (group and individual)					
15. Other accident and health					
16. Workers' compensation	56,653,653			1,811,825	58,465,478
17.1 Other liability—occurrence					
17.2 Other liability—claims-made					
17.3 Excess workers' compensation					
18.1 Products liability—occurrence					
18.2 Products liability—claims-made					
19.1,19.2 Private passenger auto liability					
19.3,19.4 Commercial auto liability					
21. Auto physical damage					
22. Aircraft (all perils)					
23. Fidelity					
24. Surety					
26. Burglary and theft					
27. Boiler and machinery					
28. Credit					
29. International					
30. Warranty					
31. Reinsurance-nonproportional assumed property					
32. Reinsurance-nonproportional assumed liability					
33. Reinsurance-nonproportional assumed financial lines					
34. Aggregate write-ins for other lines of business					
35. TOTALS	56,653,653			1,811,825	58,465,478
36. Accrued retrospective premiums based on experience					
37. Earned but unbilled premiums					
38. Balance (Sum of Lines 35 through 37)					58,465,478

DETAILS OF WRITE-IN LINES					
3401.					
3402.					
3403.					
3498. Sum of remaining write-ins for Line 34 from overflow page					
3499. Totals (Lines 3401 through 3403 plus 3498) (Line 34 above)					

(a) State here basis of computation used in each case

UNDERWRITING AND INVESTMENT EXHIBIT

PART 1B – PREMIUMS WRITTEN

Line of Business	1	Reinsurance Assumed		Reinsurance Ceded		6
	Direct Business (a)	2 From Affiliates	3 From Non-Affiliates	4 To Affiliates	5 To Non-Affiliates	Net Premiums Written Cols. 1 + 2 + 3 - 4 - 5
1. Fire						
2. Allied lines						
3. Farmowners multiple peril						
4. Homeowners multiple peril						
5. Commercial multiple peril						
6. Mortgage guaranty						
8. Ocean marine						
9. Inland marine						
10. Financial guaranty						
11.1 Medical professional liability--occurrence						
11.2 Medical professional liability--claims-made						
12. Earthquake						
13. Group accident and health						
14. Credit accident and health (group and individual)						
15. Other accident and health						
16. Workers' compensation	120,457,495		2,683,770		5,464,975	117,676,290
17.1 Other liability—occurrence						
17.2 Other liability—claims-made						
17.3 Excess workers' compensation						
18.1 Products liability—occurrence						
18.2 Products liability—claims-made						
19.1,19.2 Private passenger auto liability						
19.3,19.4 Commercial auto liability						
21. Auto physical damage						
22. Aircraft (all perils)						
23. Fidelity						
24. Surety						
26. Burglary and theft						
27. Boiler and machinery						
28. Credit						
29. International						
30. Warranty						
31. Reinsurance-nonproportional assumed property	X X X					
32. Reinsurance-nonproportional assumed liability	X X X					
33. Reinsurance-nonproportional assumed financial lines	X X X					
34. Aggregate write-ins for other lines of business						
35. TOTALS	120,457,495		2,683,770		5,464,975	117,676,290

DETAILS OF WRITE-IN LINES						
3401.						
3402.						
3403.						
3498. Sum of remaining write-ins for Line 34 from overflow page						
3499. Totals (Lines 3401 through 3403 plus 3498) (Line 34 above)						

NONE

(a) Does the company's direct premiums written include premiums recorded on an installment basis? Yes [] No [X]

If yes: 1. The amount of such installment premiums \$ 0

2. Amount at which such installment premiums would have been reported had they been recorded on an annualized basis \$ 0

UNDERWRITING AND INVESTMENT EXHIBIT PART 2 – LOSSES PAID AND INCURRED

Line of Business	Losses Paid Less Salvage				5 Net Losses Unpaid Current Year (Part 2A, Col. 8)	6 Net Losses Unpaid Prior Year	7 Losses Incurred Current Year (Cols. 4 + 5 - 6)	8 Percentage of Losses Incurred (Col. 7, Part 2) to Premiums Earned (Col. 4, Part 1)
	1 Direct Business	2 Reinsurance Assumed	3 Reinsurance Recovered	4 Net Payments (Cols. 1 + 2 - 3)				
1. Fire								
2. Allied lines								
3. Farmowners multiple peril								
4. Homeowners multiple peril								
5. Commercial multiple peril								
6. Mortgage guaranty								
8. Ocean marine								
9. Inland marine								
10. Financial guaranty								
11.1 Medical professional liability—occurrence								
11.2 Medical professional liability—claims-made								
12. Earthquake								
13. Group accident and health								
14. Credit accident and health (group and individual)								
15. Other accident and health								
16. Workers' compensation	65,043,652	2,752,949	1,494,156	66,302,445	158,792,818	156,013,160	69,082,103	57.029
17.1 Other liability—occurrence								
17.2 Other liability—claims-made								
17.3 Excess workers' compensation								
18.1 Products liability—occurrence								
18.2 Products liability—claims-made								
19.1,19.2 Private passenger auto liability								
19.3,19.4 Commercial auto liability								
21. Auto physical damage								
22. Aircraft (all perils)								
23. Fidelity								
24. Surety								
26. Burglary and theft								
27. Boiler and machinery								
28. Credit								
29. International								
30. Warranty								
31. Reinsurance-nonproportional assumed property	X X X							
32. Reinsurance-nonproportional assumed liability	X X X							
33. Reinsurance-nonproportional assumed financial lines	X X X							
34. Aggregate write-ins for other lines of business								
35. TOTALS	65,043,652	2,752,949	1,494,156	66,302,445	158,792,818	156,013,160	69,082,103	57.029

DETAILS OF WRITE-IN LINES								
3401.								
3402.								
3403.								
3498. Sum of remaining write-ins for Line 34 from overflow page								
3499. Totals (Lines 3401 through 3403 plus 3498) (Line 34 above)								

NONE

UNDERWRITING AND INVESTMENT EXHIBIT

PART 2A – UNPAID LOSSES AND LOSS ADJUSTMENT EXPENSES

Line of Business	Reported Losses				Incurred But Not Reported			8 Net Losses Unpaid (Cols. 4 + 5 + 6 - 7)	9 Net Unpaid Loss Adjustment Expenses
	1 Direct	2 Reinsurance Assumed	3 Deduct Reinsurance Recoverable	4 Net Losses Excl. Incurred But Not Reported (Cols. 1 + 2 - 3)	5 Direct	6 Reinsurance Assumed	7 Reinsurance Ceded		
1. Fire									
2. Allied lines									
3. Farmowners multiple peril									
4. Homeowners multiple peril									
5. Commercial multiple peril									
6. Mortgage guaranty									
8. Ocean marine									
9. Inland marine									
10. Financial guaranty									
11.1 Medical professional liability—occurrence									
11.2 Medical professional liability—claims-made									
12. Earthquake									
13. Group accident and health								(a)	
14. Credit accident and health (group and individual)								(a)	
15. Other accident and health									
16. Workers' compensation	118,743,787	6,654,865	18,545,160	106,853,492	50,270,983	5,854,231	4,185,888	158,792,818	24,032,624
17.1 Other liability—occurrence									
17.2 Other liability—claims-made									
17.3 Excess workers' compensation									
18.1 Products liability—occurrence									
18.2 Products liability—claims-made									
19.1,19.2 Private passenger auto liability									
19.3,19.4 Commercial auto liability									
21. Auto physical damage									
22. Aircraft (all perils)									
23. Fidelity									
24. Surety									
26. Burglary and theft									
27. Boiler and machinery									
28. Credit									
29. International									
30. Warranty									
31. Reinsurance-nonproportional assumed property	X X X				X X X				
32. Reinsurance-nonproportional assumed liability	X X X				X X X				
33. Reinsurance-nonproportional assumed financial lines	X X X				X X X				
34. Aggregate write-ins for other lines of business									
35. TOTALS	118,743,787	6,654,865	18,545,160	106,853,492	50,270,983	5,854,231	4,185,888	158,792,818	24,032,624
DETAILS OF WRITE-IN LINES									
3401.									
3402.									
3403.									
3498. Sum of remaining write-ins for Line 34 from overflow page									
3499. Totals (Lines 3401 through 3403 plus 3498) (Line 34 above)									

NONE

(a) Including \$ 0 for present value of life indemnity claims.

UNDERWRITING AND INVESTMENT EXHIBIT

PART 3 - EXPENSES

	1	2	3	4
	Loss Adjustment Expenses	Other Underwriting Expenses	Investment Expenses	Total
1. Claim adjustment services:				
1.1 Direct	3,148,462			3,148,462
1.2 Reinsurance assumed	292,347			292,347
1.3 Reinsurance ceded	18,884			18,884
1.4 Net claim adjustment services (1.1 + 1.2 - 1.3)	3,421,925			3,421,925
2. Commission and brokerage:				
2.1 Direct, excluding contingent		7,767,250		7,767,250
2.2 Reinsurance assumed, excluding contingent		631,375		631,375
2.3 Reinsurance ceded, excluding contingent				
2.4 Contingent—direct		4,476,391		4,476,391
2.5 Contingent—reinsurance assumed				
2.6 Contingent—reinsurance ceded		66,713		66,713
2.7 Policy and membership fees				
2.8 Net commission and brokerage (2.1 + 2.2 - 2.3 + 2.4 + 2.5 - 2.6 + 2.7)		12,808,303		12,808,303
3. Allowances to manager and agents		1,400		1,400
4. Advertising		461,495		461,495
5. Boards, bureaus and associations		567,886		567,886
6. Surveys and underwriting reports		50,033		50,033
7. Audit of assureds' records		182,703		182,703
8. Salary and related items:				
8.1 Salaries	9,303,307	8,654,929	130,838	18,089,074
8.2 Payroll taxes	655,915	593,495	9,225	1,258,635
9. Employee relations and welfare	2,502,592	2,385,077	35,196	4,922,865
10. Insurance	334,570	242,533	4,705	581,808
11. Directors' fees	121,274	90,195	1,706	213,175
12. Travel and travel items	79,507	126,364	1,466	207,337
13. Rent and rent items	865,458	573,778	7,592	1,446,828
14. Equipment	903,851	1,436,538	16,664	2,357,053
15. Cost or depreciation of EDP equipment and software	280,739	446,196	5,176	732,111
16. Printing and stationery	116,815	185,660	2,154	304,629
17. Postage, telephone and telegraph, exchange and express	203,745	323,822	3,756	531,323
18. Legal and auditing	719,112	1,505,140	9,111	2,233,363
19. Totals (Lines 3 to 18)	16,086,885	17,827,244	227,589	34,141,718
20. Taxes, licenses and fees:				
20.1 State and local insurance taxes deducting guaranty association credits of \$ 0		8,416,149		8,416,149
20.2 Insurance department licenses and fees	109,374	81,399	1,539	192,312
20.3 Gross guaranty association assessments				
20.4 All other (excluding federal and foreign income and real estate)		54,405		54,405
20.5 Total taxes, licenses and fees (20.1 + 20.2 + 20.3 + 20.4)	109,374	8,551,953	1,539	8,662,866
21. Real estate expenses			556,106	556,106
22. Real estate taxes			240,476	240,476
23. Reimbursements by uninsured plans		(1,991,488)		(1,991,488)
24. Aggregate write-ins for miscellaneous expenses			638,896	638,896
25. Total expenses incurred	19,618,184	37,196,012	1,664,606	(a) 58,478,802
26. Less unpaid expenses—current year	24,032,624	21,543,884		45,576,508
27. Add unpaid expenses—prior year	24,006,297	21,016,617		45,022,914
28. Amounts receivable relating to uninsured plans, prior year				
29. Amounts receivable relating to uninsured plans, current year				
30. TOTAL EXPENSES PAID (Lines 25 - 26 + 27 - 28 + 29)	19,591,857	36,668,745	1,664,606	57,925,208

DETAILS OF WRITE-IN LINES				
2401. Professional Maintenance Expense			638,896	638,896
2402.				
2403.				
2498. Sum of remaining write-ins for Line 24 from overflow page				
2499. Totals (Lines 2401 through 2403 plus 2498) (Line 24 above)			638,896	638,896

(a) Includes management fees of \$ 0 to affiliates and \$ 0 to non-affiliates.

EXHIBIT OF NET INVESTMENT INCOME

	1 Collected During Year	2 Earned During Year
1. U.S. Government bonds	(a) 1,072,780	1,007,895
1.1 Bonds exempt from U.S. tax	(a) 13,008	8,928
1.2 Other bonds (unaffiliated)	(a) 10,829,879	10,656,017
1.3 Bonds of affiliates	(a)	
2.1 Preferred stocks (unaffiliated)	(b) 483,128	481,252
2.11 Preferred stocks of affiliates	(b)	
2.2 Common stocks (unaffiliated)	1,299,635	1,291,804
2.21 Common stocks of affiliates		
3. Mortgage loans	(c)	
4. Real estate	(d) 1,264,940	1,264,940
5. Contract loans		
6. Cash, cash equivalents and short-term investments	(e) 198,347	198,347
7. Derivative instruments	(f)	
8. Other invested assets		
9. Aggregate write-ins for investment income	6,150	6,150
10. Total gross investment income	15,167,867	14,915,333
11. Investment expenses		(g) 1,663,067
12. Investment taxes, licenses and fees, excluding federal income taxes		(g) 1,539
13. Interest expense		(h)
14. Depreciation on real estate and other invested assets		(i) 373,108
15. Aggregate write-ins for deductions from investment income		
16. Total deductions (Lines 11 through 15)		2,037,714
17. Net investment income (Line 10 minus Line 16)		12,877,619

DETAILS OF WRITE-IN LINES		
0901. SERP Accounts	6,150	6,150
0902.		
0903.		
0998. Summary of remaining write-ins for Line 09 from overflow page		
0999. Totals (Lines 0901 through 0903 plus 0998) (Line 09 above)	6,150	6,150
1501.		
1502.		
1503.		
1598. Summary of remaining write-ins for Line 15 from overflow page		
1599. Totals (Lines 1501 through 1503 plus 1598) (Line 15 above)		

NONE

- (a) Includes \$ 163,227 accrual of discount less \$ 1,102,892 amortization of premium and less \$ 79,216 paid for accrued interest on purchases.
- (b) Includes \$ 0 accrual of discount less \$ 0 amortization of premium and less \$ 0 paid for accrued dividends on purchases.
- (c) Includes \$ 0 accrual of discount less \$ 0 amortization of premium and less \$ 0 paid for accrued interest on purchases.
- (d) Includes \$ 1,264,940 for company's occupancy of its own buildings; and excludes \$ 0 interest on encumbrances.
- (e) Includes \$ 4,151 accrual of discount less \$ 0 amortization of premium and less \$ 0 paid for accrued interest on purchases.
- (f) Includes \$ 0 accrual of discount less \$ 0 amortization of premium.
- (g) Includes \$ 1,663,069 investment expenses and \$ 1,539 investment taxes, licenses and fees, excluding federal income taxes, attributable to segregated and Separate Accounts.
- (h) Includes \$ 0 interest on surplus notes and \$ 0 interest on capital notes.
- (i) Includes \$ 373,108 depreciation on real estate and \$ 0 depreciation on other invested assets.

EXHIBIT OF CAPITAL GAINS (LOSSES)

	1 Realized Gain (Loss) on Sales or Maturity	2 Other Realized Adjustments	3 Total Realized Capital Gain (Loss) (Columns 1 + 2)	4 Change in Unrealized Capital Gain (Loss)	5 Change in Unrealized Foreign Exchange Capital Gain (Loss)
1. U.S. Government bonds	262,099		262,099		
1.1 Bonds exempt from U.S. tax					
1.2 Other bonds (unaffiliated)	1,724,264		1,724,264	334,927	
1.3 Bonds of affiliates					
2.1 Preferred stocks (unaffiliated)	72,978		72,978	469,346	
2.11 Preferred stocks of affiliates	62,104		62,104		
2.2 Common stocks (unaffiliated)	3,281,709		3,281,709	4,399,839	
2.21 Common stocks of affiliates				31,297	
3. Mortgage loans					
4. Real estate					
5. Contract loans					
6. Cash, cash equivalents and short-term investments	37		37		
7. Derivative instruments					
8. Other invested assets					
9. Aggregate write-ins for capital gains (losses)	13,775		13,775	17,330	
10. Total capital gains (losses)	5,416,966		5,416,966	5,252,739	

DETAILS OF WRITE-IN LINES					
0901. Realized gains - sales of Castle Hill investments with deferred g	13,775		13,775		
0902. SERP Accounts				17,330	
0903.					
0998. Summary of remaining write-ins for Line 09 from overflow page					
0999. Totals (Lines 0901 through 0903 plus 0998) (Line 09 above)	13,775		13,775	17,330	

EXHIBIT OF NONADMITTED ASSETS

	1 Current Year Total Nonadmitted Assets	2 Prior Year Total Nonadmitted Assets	3 Change in Total Nonadmitted Assets (Col. 2 - Col. 1)
1. Bonds (Schedule D)			
2. Stocks (Schedule D):			
2.1 Preferred stocks			
2.2 Common stocks			
3. Mortgage loans on real estate (Schedule B):			
3.1 First lines			
3.2 Other than first lines			
4. Real estate (Schedule A):			
4.1 Properties occupied by the company			
4.2 Properties held for the production of income			
4.3 Properties held for sale			
5. Cash (Schedule E - Part 1), cash equivalents (Schedule E - Part 2) and short-term investments (Schedule DA)			
6. Contract loans			
7. Derivatives (Schedule DB)			
8. Other invested assets (Schedule BA)			
9. Receivables for securities			
10. Securities lending reinvested collateral assets (Schedule DL)			
11. Aggregate write-ins for invested assets			
12. Subtotals, cash and invested assets (Lines 1 to 11)			
13. Title plants (for Title insurers only)			
14. Investment income due and accrued			
15. Premiums and considerations:			
15.1 Uncollected premiums and agents' balances in the course of collection	306,725	424,606	117,881
15.2 Deferred premiums, agents' balances and installments booked but deferred and not yet due	6,855	58,499	51,644
15.3 Accrued retrospective premiums and contracts subject to redetermination			
16. Reinsurance:			
16.1 Amounts recoverable from reinsurers			
16.2 Funds held by or deposited with reinsured companies			
16.3 Other amounts receivable under reinsurance contracts			
17. Amounts receivable relating to uninsured plans			
18.1 Current federal and foreign income tax recoverable and interest thereon			
18.2 Net deferred tax asset			
19. Guaranty funds receivable or on deposit			
20. Electronic data processing equipment and software	1,423,843	1,257,267	(166,576)
21. Furniture and equipment, including health care delivery assets	221,435	184,644	(36,791)
22. Net adjustment in assets and liabilities due to foreign exchange rates			
23. Receivables from parent, subsidiaries and affiliates			
24. Health care and other amounts receivable			
25. Aggregate write-ins for other-than-invested assets	4,034,799	2,429,507	(1,605,292)
26. Total assets excluding Separate Accounts, Segregated Accounts and Protected Cell Accounts (Lines 12 to 25)	5,993,657	4,354,523	(1,639,134)
27. From Separate Accounts, Segregated Accounts and Protected Cell Accounts			
28. Total (Lines 26 and 27)	5,993,657	4,354,523	(1,639,134)

DETAILS OF WRITE-IN LINES			
1101.			
1102.			
1103.			
1198. Summary of remaining write-ins for Line 11 from overflow page			
1199. Totals (Lines 1101 through 1103 plus 1198) (Line 11 above)			
2501. Prepaid Expenses	3,993,288	2,318,991	(1,674,297)
2502. Miscellaneous Receivables	41,511	110,516	69,005
2503.			
2598. Summary of remaining write-ins for Line 25 from overflow page			
2599. Totals (Lines 2501 through 2503 plus 2598) (Line 25 above)	4,034,799	2,429,507	(1,605,292)

NOTES TO FINANCIAL STATEMENTS

1. Summary of Significant Accounting Policies

A. Accounting Practices

The accompanying financial statements of The Beacon Mutual Insurance Company (the "Company") have been prepared in conformity with insurance accounting practices prescribed or permitted by the Rhode Island Insurance Department. The State of Rhode Island requires insurance companies domiciled in the State of Rhode Island to prepare their statutory financial statements in accordance with the National Association of Insurance Commissioners' (NAIC) Accounting Practices and Procedures Manual.

SSAP 97 requires investments in subsidiaries to be carried at the entity's underlying audited statutory equity. As the Castle Hill Insurance subsidiary ("Castle Hill") has been inactive since its inception, the State of Rhode Island has granted the subsidiary an exemption from filing audited financial statements. As such, the State of Rhode Island has also granted a permitted practice to allow Castle Hill to be recorded on the Company's balance sheet as an invested asset at its unaudited statutory equity value.

A summary of the impact of the permitted practice on the Company's net income and surplus as a result of recording Castle Hill as an invested asset is estimated to be as follows:

	<u>SSAP</u> <u>#</u>	<u>F/S</u> <u>Page</u>	<u>F/S</u> <u>Line#</u>	<u>12/31/2019</u>	<u>12/31/2018</u>
Net Income	97	4	20	\$ 6,997,272	\$ 4,180,346
Rhode Island Basis State Permitted Practice Value of Castle Hill subsidiary					
NAIC SAP	97	4	20	<u>\$ 6,997,272</u>	<u>\$ 4,180,346</u>
SURPLUS					
Rhode Island Basis State Permitted Practice Value of Castle Hill subsidiary	97	3	37	\$164,247,244	\$153,637,248
NAIC SAP	97	3	37	<u>\$162,804,470</u>	<u>\$152,225,771</u>

B. Use of Estimates in the Preparation of the Financial Statements

The preparation of the financial statements in conformity with Statutory Accounting Principles requires management to make estimates and assumptions that affect the reported amounts of assets and liabilities and disclosure of contingent assets and liabilities at the date of the financial statements along with the reported amounts of revenues and expenses during the reporting period. Significant items subject to such estimates and assumptions include the Company's loss and loss adjustment expense reserves which have a significant effect on Incurred Losses and Loss Adjustment Expenses and related Net Income. Actual results could differ from these estimates.

C. Accounting Policies

Premiums are earned over the terms of the related policies and reinsurance contracts. Unearned premium reserves are established to cover the unexpired portion of premiums written. Such reserves are computed by pro rata methods for direct business and are based on reports received from ceding companies for reinsurance assumed. Expenses incurred in connection with acquiring new insurance business, including acquisition costs such as agent commissions, are charged to operations as incurred.

Real estate investments are classified in the balance sheet as properties occupied by the Company and carried at depreciated cost less encumbrances, if any. The fair values reported in Schedule A - Part 1 were obtained from an external independent appraisal company with values as of December 1, 2017.

In addition, the Company uses the following accounting policies:

NOTES TO FINANCIAL STATEMENTS

1. Short-term investments are stated at amortized value using the interest method. Non-investment grade short-term investments are stated at the lower of amortized value or fair market value.
2. Bonds not backed by other loans are stated at amortized value using the interest method. Non-investment grade bonds are stated at the lower of amortized value or fair market value.
3. Common stocks, other than investments in stocks of subsidiaries, are stated at fair market value.
4. Redeemable preferred stocks are stated at cost or amortized cost in accordance with NAIC guidance. Perpetual preferred stocks are stated at fair market value. Non-investment grade preferred stocks are stated at the lower of amortized value or fair value.
5. The Company does not own mortgage loans.
6. Loan-backed securities are stated at amortized value. The retrospective adjustment method is used to value all loan-backed securities.
7. The Company values its investments in subsidiaries as follows: GAAP basis for BMIC Service Corporation and the Statutory Equity Method for Castle Hill Insurance Company as described in part Five, Sections 8bi and 8biii, respectively, of the NAIC Purposes and Procedures Manual of the Securities Valuation Office.
8. The Company has minor ownership interests in joint ventures and partnerships which are carried at fair market value.
9. The Company does not invest in derivatives.
10. The Company anticipates investment income as a factor in the premium deficiency calculation in accordance with SSAP No. 53 - Property-Casualty Contract Premiums and was not required to record a premium deficiency reserve as of December 31, 2019.
11. The Company provides reserves for unpaid insurance losses and loss adjustment expenses which cover events that occurred in the current and prior years. These reserves reflect estimates of the total cost of claims reported but not yet paid, and the cost of claims not yet reported, as well as the estimated expenses necessary to settle the claims. Reserve estimates are based on past loss experience modified for current claim trends as well as prevailing social, economic and legal conditions. Final claim payments may ultimately differ from the established reserves, particularly when these payments may not occur for several years. Reserve estimates are continually reviewed and updated and any resulting adjustments are reflected in current operating results.

Reserves are reduced for amounts to be recovered through reinsurance agreements but are not discounted or reduced for estimated salvage and subrogation recoveries. Salvage and subrogation recoveries are recorded when received.

12. The Company has a written capitalization policy for the purchase of items such as land, buildings and improvements, leasehold improvements, furniture and equipment, leased property, software, electronic data processing equipment, vehicles and other equipment. No change has taken place during the year.
13. The Company has no pharmaceutical rebate receivables.

2. Accounting Changes and Corrections of Errors

A. Accounting Changes Other than Codification and Corrections of Errors

Not applicable

3. Business Combinations and Goodwill

There were no business combinations.

4. Discontinued Operations

Not applicable

5. Investments

- A. The Company does not invest in mortgages loans, including mezzanine real estate loans.

NOTES TO FINANCIAL STATEMENTS

- B. The Company does not invest in debt restructuring.
- C. The Company does not invest in reverse mortgages.
- D. Loan-Backed Securities

1. Prepayment assumptions for single class and multi-class mortgage backed/asset-backed securities were obtained from an external investment manager.

2. Not applicable.

3. The Company did not recognize an other-than-temporary impairment during 2019.

4. The following summarizes gross unrealized investment losses on loan-backed and structured securities by the length of time that securities have continuously been in an unrealized loss position.

a. The aggregate amount of unrealized losses:		
1. Less than 12 Months	\$	(52,296)
2. 12 Months or Longer		<u>(194,118)</u>
	\$	<u>(246,414)</u>

b. The aggregate related fair value of securities with unrealized losses:		
1. Less than 12 Months		\$15,615,767
2. 12 Months or Longer		<u>17,151,428</u>
		<u>\$32,767,195</u>

5. All loan-backed and structured securities in an unrealized loss position were reviewed to determine whether an other-than-temporary impairment should be recognized. For those securities in an unrealized loss position as of December 31, 2019, the Company has not made a decision to sell any such securities. The Company evaluated its cash flow requirements and believes that its liquidity is adequate and it will not be required to sell these securities before recovery of their cost basis. As of December 31, 2019, the Company can attest that it has the intent and believes that it has the ability to hold these securities long enough to allow the cost basis of these securities to be recovered. The conclusions are determined by a detailed analysis of the underlying credit and cash flows on each security. It is possible that the Company could recognize other than temporary impairments in the future on some of the securities held at December 31, 2019 if future events, information, and the passage of time causes it to conclude that declines in value are other than temporary.

- E. Repurchase Agreements
Not applicable
- F. Repurchase Agreements Transactions Accounted for as Secured Borrowing
Not applicable
- G. Reverse Repurchase Agreements Transactions for as Secured Borrowing
Not applicable
- H. Repurchase Agreements Transactions Accounted for as a Sale
Not applicable
- I. Reverse Repurchase Agreements Transactions Accounted for as a Sale
Not applicable
- J. Writedowns for Impairments of Real Estate, Real Estate Sales and Retail Land Sales
Not applicable
- K. Low-Income Housing Tax Credits (LIHTC)
Not applicable

NOTES TO FINANCIAL STATEMENTS

L. Restricted Assets

1. Restricted Assets (Including Pledged)

Restricted Asset Category	Gross (Admitted & Nonadmitted) Restricted							8	9	Percentage	
	Current Year					6	7			10	11
	1	2	3	4	5						
	Total General Account (G/A)	G/A Supporting Protected Cell Account Activity	Total Protected Cell Account Restricted Assets	Protected Cell Account Assets Supporting G/A Activity (b)	Total	Total From Prior Year	Increase/Decrease	Total Nonadmitted Restricted	Total Admitted Restricted	Gross Restricted to Total Assets	Admitted Restricted to Total Admitted Assets
On deposit with states	\$ 816,646	\$ -	\$ -	\$ -	\$ 816,646	\$ 824,325	\$ (7,679)	\$ -	\$ 816,646	.18%	.19%
On deposit with regulatory bodies	\$ 448,631	\$ -	\$ -	\$ -	\$ 448,631	\$ 448,597	\$ 34	\$ -	\$ 448,631	.10%	.10%
Pledged as collateral not captured in other categories	\$19,549,989	\$ -	\$ -	\$ -	\$19,549,989	\$19,678,589	\$(128,600)	\$ -	\$19,549,989	4.4%	4.5%
Total Restricted Assets	\$20,815,266	\$ -	\$ -	\$ -	\$20,815,266	\$20,951,511	\$(136,245)	\$ -	\$20,815,266	4.7%	4.8%

Restricted assets include those securities pledged to cedants as part of reinsurance collateral and to state and governmental agencies.

2. Detail of Assets Pledged as Collateral Not Captured in Other Categories

Restricted Asset Category	Gross (Admitted & Nonadmitted) Restricted							8	Percentage	
	Current Year					6	7		9	10
	1	2	3	4	5					
	Total General Account (G/A)	G/A Supporting Protected Cell Account Activity	Total Protected Cell Account Restricted Assets	Protected Cell Account Assets Supporting G/A Activity (b)	Total	Total From Prior Year	Increase/Decrease	Total Current Year Admitted Restricted	Gross (Admitted and Nonadmitted) Restricted to Total Assets	Admitted Restricted to Total Admitted Assets
Pledged to cedants as part of reinsurance collateral	\$ 3,131,094	\$ -	\$ -	\$ -	\$ 3,131,094	\$ 3,163,414	\$(32,320)	\$ 3,131,094	.71%	.72%
Collateral trust agreement with ceding reinsurer	\$ 16,418,895	\$ -	\$ -	\$ -	\$16,418,895	\$16,515,175	\$(96,280)	\$16,418,895	3.7%	3.8%
Total Restricted Assets	\$ 19,549,989	\$ -	\$ -	\$ -	\$ 19,549,989	\$19,678,589	\$(128,600)	\$19,549,989	4.4%	4.5%

3. Detail of Other Restricted Assets

Not applicable

4. Collateral Received and Reflected as Assets Within the Reporting Entity's Financial Statements

Not applicable

M. Working Capital Finance Investments

Not applicable

N. Offsetting and Netting of Assets and Liabilities

Not applicable

O. 5GI Securities

The Company has no investment securities with a 5GI NAIC designation in the current or prior year.

P. Short Sales

Not applicable

Q. Prepayment Penalty and Acceleration Fees

	General Account	Protected Cell
(1) Number of CUSIPs	13	0
(2) Aggregate Amount of Investment Income	<u>\$ 24,334</u>	<u>\$ 0</u>

NOTES TO FINANCIAL STATEMENTS

6. Joint Ventures, Partnerships and Limited Liability Companies

- A. The Company has no investments in Joint Ventures, Partnerships or Limited Liability Companies that exceed 10% of its admitted assets.
- B. When it appears probable that the Company will be unable to recover the outstanding carrying value of an investment, or there is evidence indicating an inability of the investee to sustain earnings which would justify the carrying value of the investment, an other-than-temporary impairment is recognized in realized capital losses for the excess of the carrying value over the estimated fair value of the investment. During 2019, the Company did not recognize any impairments for its investment in the Business Development Company of Rhode Island. The estimated fair value was determined by evaluating the Company's current equity value in the underlying investment, performed by assessing the corporation's balance sheet and current financial condition.

7. Investment Income

- A. Due and accrued income is excluded from surplus for all investment income due and accrued with amounts that are over 90 days past due. There was no income due over 90 days past due at December 31, 2019.
- B. Amounts nonadmitted

None

8. Derivative Instruments

The Company has no derivative financial instruments.

9. Income Taxes

The Company is tax exempt under section 501 (c) (27) of the Internal Revenue Code.

10. Information Concerning Parent, Subsidiaries and Affiliates and Other Related Parties

A. Nature of Relationships

The Company is a non-profit public corporation organized and operated as a domestic mutual insurance company under the laws enacted by the Rhode Island legislature. In accordance with its enabling legislation, the Company is managed by a Board of Directors, the majority of whom serve via appointment by the Governor of the State of Rhode Island. The Company is not directly or indirectly owned or controlled by any other Company. The Company is a parent company of its wholly owned subsidiaries - BMIC Service Corporation and Castle Hill Insurance Company.

The Company's charter provides extraordinary provisions to ensure the continued adequacy of the Company's capitalization and solvency. Most importantly, the Company's charter provides for the implementation and continuation of a special state-wide capital assessment funding mechanism to be administered by the Rhode Island Department of Labor and Training, as a means to establish and maintain the reserves and surplus required for the company to meet policyholder obligations and serve Rhode Island's residual risk market. Provisions for the Capital Assessment are set forth in Public Law 2003, Chapter 410, Section 19 which provides that the Director of the Rhode Island Department of Business Regulation shall place an assessment (for the benefit of the Company) upon all premiums for workers' compensation and employers' liability insurance written or renewed within the State in an amount required to ensure both the solvency of the Company and the Company's ability to establish surplus reasonably adequate to allow it to write required insurance. If required, such law provides for continuing capital assessment funding of the Company at whatever level may be necessary to assure the Company's future solvency on an indefinite basis.

B. Detail of Transactions Greater than ½% of Admitted Assets

Not applicable

C. Change in Terms of Intercompany Arrangements

None

D. Amounts Due to or from Related Parties

At the end of the current year, the Company reported \$20,581 due to its subsidiary BMIC Service Corporation. No amount is due from Castle Hill Insurance Company at year end.

NOTES TO FINANCIAL STATEMENTS

E. Guarantees or Contingencies for Related Parties

Not applicable

F. Management, Service Contracts, Cost Sharing Arrangements

The Company has agreed to provide certain management and data processing services to its wholly-owned subsidiaries.

G. Nature of Relationships that Could Affect Operations

Not applicable

H. Amount Deducted for Investment in Upstream Company

Not applicable

I. Detail of Investments in SCA Entity Greater than 10% of Admitted Assets

Not applicable

J. Writedown or Impairments of Investments in SCA Entities

No impairment was recorded in 2019.

K. Foreign Insurance Subsidiary Valued Using CARVM

Not applicable

L. Downstream Holding Company Valued Using Look-Through Method

Not applicable.

M. Non-Insurance Subsidiary, Controlled and Affiliated (SCA) Entities Valuations

The Company owns 100% of an insurance agency, BMIC Service Corp; after determining that BMIC Service Corp would not recover its original cost within a reasonable timeframe, the Company permanently impaired the investment (\$15,000) in 2006 bringing the value to zero. As a result, no value is reflected in the Company's financial statements. The NAIC agreed with the Company's prior year valuation and Sub-2 filing.

SCA Entity	Type of NAIC Filing	Date of Filing to the NAIC	NAIC Valuation Amount	NAIC Response Received	NAIC Disallowed Entities Valuation Method, Resubmission Required	Code
BMIC Service Corp	SUB 2	XX/XX/XX	0	Y	N	I

N. Insurance SCA Entities Utilizing Prescribed or Permitted Practices

The Company owns one insurance SCA entity, Castle Hill Insurance Company. As Castle Hill has been inactive since its inception, the State of Rhode Island has granted a permitted practice to exempt Castle Hill from filing audited financials and an actuarial opinion. There is no impact to Castle Hill's financials for this exemption. This exemption did not trigger any risk-based capital or other regulatory event. The impact of carrying the unaudited statutory equity value on the Company's books is reflected in Note 1.

O. SCA or SSAP No. 48 Entity Loss Tracking

Not applicable.

11. Debt

The Company does not have any capital notes or reverse repurchase agreements at December 31, 2019.

The Company has an irrevocable standby letter of credit with Bank of America for the benefit of General Reinsurance Corporation. The credit limit was \$2,449,028 and \$2,334,727 as of December 31, 2019 and 2018, respectively. To collateralize this letter of credit, the Company was required to deposit US Agency securities with Bank of America. The carrying value of the deposit is \$3,131,094 and \$3,163,414 at December 31, 2019 and 2018, respectively.

NOTES TO FINANCIAL STATEMENTS

12. Retirement Plans, Deferred Compensation, Postemployment Benefits and Compensated Absences and Other Postretirement Benefit Plans

A. Defined Benefit Plan

The Company has no defined benefit plans.

B. Investment policies and strategies of defined benefit plans

Not applicable

C. Fair value of each class of plan assets of defined benefit plans

Not applicable

D. Narrative description of the basis used to determine the overall expected rate of return on assets assumption

Not applicable

E. Defined Contribution Plans

The Company sponsors a qualified 401(k) defined contribution plan for all employees. The Company matches 50% of the employee's contribution up to 6% of an individual's gross salary and may contribute additional amounts as authorized by the Board of Directors within IRS limitations on compensation, elective deferrals and annual additions. Employees vest ratably in the matching contribution over five years. The Company's expense under this plan totaled \$2,102,329 and \$1,805,567 for the years ended December 31, 2019 and 2018, respectively. At December 31, 2019, the fair value of plan assets was \$83,823,916.

F. Multiemployer Plan

Not applicable

G. Consolidated/Holding Company Plans

Not applicable

H. Postemployment Benefits and Compensated Absences

During 2003, the Company entered into employment agreements with certain key employees; the Company's total commitment for officers under these employment agreements was \$1,931,468 at December 31, 2019.

A Rabbi Trust was established in 2017 for an active senior executive officer with initial funding of \$37,500; \$75,000 was contributed in years 2018 and 2019. The fair value of the trust at December 31, 2019 was \$206,133 and is listed in other assets of the Company.

Obligations for post-employment benefits and compensated absences have been accrued in accordance with SSAP 11 in all prior periods.

I. Impact of Medicare Modernization Act on Postretirement Benefits (INT 02-17)

The Company does not sponsor a postretirement health care benefit plan.

13. Capital and Surplus, Shareholders' Dividend Restrictions and Quasi-Reorganizations

A. Authorized and Outstanding Shares

Not applicable

B. Dividend Rate of Preferred Stock

Not applicable

C. Dividend Restrictions

Policyholder dividends are paid out of unassigned surplus in accordance with a percentage or amounts approved by the Board of Directors. Dividends declared and

NOTES TO FINANCIAL STATEMENTS

unpaid are recorded as a liability. The Company is required to satisfy the legal minimum capital requirements of its domiciliary state - Rhode Island. Under the terms of its enabling act, the Company may declare a dividend when there is an excess of assets over liabilities and minimum surplus requirements.

The Company maintains a shared earnings program in support of its loss prevention and claim cost containment initiatives. Shared earnings are computed 18 months after policy inception based on an individual policy's incurred loss experience. These shared earnings plans are estimated, accrued and accounted for as retrospectively rated policies.

D. Dates and Amounts of Dividends Paid

In December 2019, the Board of Directors declared a dividend in the amount of \$6,000,000 to be paid to policyholders which meet the established eligibility criteria. No dividends were declared for 2018.

E. Amount of Ordinary Dividends that May Be Paid

No restriction other than stated above.

F. Restrictions on Unassigned Funds

There were no restrictions placed on the Company's surplus.

G. Mutual Surplus Advances

Not applicable

H. Company Stock Held for Special Purposes

Not applicable

I. Changes in Special Surplus Funds

Not applicable

J. Change in Unassigned Funds

The portion of unassigned funds (surplus) represented by cumulative unrealized gains (net of losses) is as follows:

Unrealized gains or (losses):	\$5,251,861
-------------------------------	-------------

K. Surplus Notes

Not applicable

L. Impact of Quasi-Reorganizations

Not applicable

M. Date of Quasi-Reorganizations

Not applicable

14. Liabilities, Contingencies and Assessments

A. Contingent Commitments

Not applicable

B. Assessments

Not applicable

C. Gain Contingencies

Not applicable

D. Extra Contractual Obligation and Bad Faith Losses

Not applicable

NOTES TO FINANCIAL STATEMENTS

E. Product Warranties

Not applicable

F. Joint and Several Liabilities

Not applicable

G. All Other Contingencies

The Company is and may become involved in various actions and legal proceedings arising out of and incidental to its normal course of business. Management, based on its review with counsel, is unable to reasonably estimate the impact and scope of any potential liability, if any, that may exist as a result of these actions or proceedings.

15. Leases

A. Lessee Leasing Arrangements

1. The Company leases office equipment under various noncancelable operating lease agreements that expire in 2023. Total lease and rent expense for 2019 and 2018 was approximately \$1,333,456 and \$1,388,362, respectively. Rental expense recognized as part of occupancy costs and included in lease and rent expense totalled \$1,211,941 in each year.

2. Future minimum aggregate lease commitments are as follows:

<u>Year Ending December 31</u>	<u>Amount</u>
2020	28,763
2021	23,804
2022	11,520
2023	<u>1,440</u>
	\$ 65,527

B. Lessor Leasing Arrangements

The Company owns a commercial real estate building which leases office space to a tenant. The Company is responsible for the payment of property tax, insurance, and repair and maintenance costs related to the leased property. The Company records expenses related to the building as investment expenses and accrues lease payments due as investment income.

Future minimum lease payments receivable under the noncancelable leasing arrangement as of December 31, 2019 are as follows:

<u>Year Ending December 31</u>	<u>Amount</u>
2020	58,000
2021	<u>29,000</u>
Total	\$87,000

C. Sale-leaseback Transactions

The Company is not involved in any sales – leaseback arrangement.

16. Information About Financial Instruments With Off-Balance Sheet Risk

The Company does not have any financial instruments with off-balance sheet risk.

17. Sale, Transfer and Servicing of Financial Assets and Extinguishments of Liabilities

A. Transfers of Receivables Reported as Sales

Not Applicable

B. Transfer and Servicing of Financial Assets

Not Applicable

C. Wash Sales

1. Occasionally, market conditions prevail such that a security fitting a sell profile will resurface quickly as an attractive investment for purchase. In these circumstances, investment opportunities are taken irrespective of the proximity of

NOTES TO FINANCIAL STATEMENTS

prior transaction dates.

2. At December 31, 2019, no securities with an NAIC Designation 3 or below were sold and reacquired within 30 days of the sale date.

18. Gain or Loss from Uninsured Plans and the Uninsured Portion of Partially Insured Plans

The Company does not administer uninsured accident and health plans or the uninsured portions of partially insured plans.

19. Direct Premium Written/Produced by Managing General Agents/Third Party Administrators

The Company does not utilize managing general agents or third party administrators to write business.

20. Fair Value Measurement

A. Inputs Used for Assets and Liabilities Measured at Fair Value

1. Fair Value Measurements by Levels 1, 2 and 3

The Company has categorized its assets and liabilities that are measured at fair value into the three-level fair value hierarchy as reflected in the table below. The three-level fair value hierarchy is based on the degree of subjectivity inherent in the valuation method by which fair value was determined. The three levels are defined as follows:

Level 1 –Values are unadjusted quoted prices for identical assets and liabilities in active markets accessible at the measurement date.

Level 2 --Inputs include quoted prices for similar assets or liabilities in active markets, quoted prices from those willing to trade in markets that are not active, or other inputs that are observable or can be corroborated by market data for the term of the instrument. Such inputs include market interest rates and volatilities, prepayment speeds, spreads and yield curves.

Level 3 --Certain inputs are unobservable (supported by little or no market activity) and significant to the fair value measurement. Unobservable inputs reflect the Company's best estimate of what hypothetical market participants would use to determine a transaction price for the asset or liability at the reporting date.

The following tables provide information as of December 31, 2019 and 2018 about the Company's financial assets and liabilities measured at fair value.

December 31, 2019					
	<u>Level 1</u>	<u>Level 2</u>	<u>Level 3</u>	<u>Net Asset Value (NAV)</u>	<u>Total</u>
<i>Assets at fair value (in 000's)</i>					
Bonds and debt securities \$	-	\$ 470	\$ -	\$ -	\$ 470
Cash Equivalents	6,387	-	-	-	6,387
Preferred Stock	-	4,242	-	-	4,242
Common stock	38,640	231	-	10,202	49,073
Total assets at fair value/NAV \$	<u>45,027</u>	<u>\$ 4,943</u>	<u>\$ -</u>	<u>\$ 10,202</u>	<u>\$ 60,172</u>

December 31, 2018					
	<u>Level 1</u>	<u>Level 2</u>	<u>Level 3</u>	<u>Net Asset Value (NAV)</u>	<u>Total</u>
<i>Assets at fair value (in 000's)</i>					
Bonds and debt securities \$	-	\$ 2,537	\$ -	\$ -	\$ 2,537
Cash Equivalents	-	-	-	-	-
Preferred Stock	-	5,366	-	-	5,366
Common stock	33,846	231	-	-	34,077
Total assets at fair value/NAV \$	<u>33,846</u>	<u>\$ 8,134</u>	<u>\$ -</u>	<u>\$ -</u>	<u>\$ 41,980</u>

At the end of each reporting period, the Company evaluates whether or not any event has occurred or circumstances have changed that would cause an instrument to be transferred between Levels 1 and 2. This policy also applies to transfers into or out of Level 3 as stated in paragraph 3 below.

During 2019, the Company had no transfers into or out of Level 3.

NOTES TO FINANCIAL STATEMENTS

2. Rollforward of Level 3 Items

The Company has no material assets or liabilities measured at fair value in the Level 3 category.

3. Policy on Transfers Into and Out of Level 3

At the end of each reporting period, the Company evaluates whether or not any event has occurred or circumstances have changed that would cause an instrument to be transferred into or out of Level 3. During the current year, no transfers into or out of Level 3 were required.

4. Inputs and Techniques Used for Level 2 and Level 3 Fair Values

The Company has no assets or liabilities measured at fair value in the Level 3 category.

The Company's investments in bond and debt securities and preferred stock reported at fair value are classified in Level 2. Fair values of the investments reported in this category are provided by independent pricing services. Where independent pricing services provide fair values, the Company has obtained an understanding of the methods, models and inputs used in pricing and has controls in place to validate that the amounts provided represent current fair values.

Typical inputs to models used by independent pricing services include but are not limited to benchmark yields, reported trades, broker-dealer quotes, issuer spreads, benchmark securities, bids, offers, reference data, and industry and economic events. Because some preferred and common stocks do not trade daily, independent pricing services regularly derive fair values using recent trades of securities with similar features. When recent trades are not available, pricing models are used to estimate the fair values of securities by discounting future cash flows at estimated market interest rates.

5. The Company has no derivative assets or liabilities.

B. Combination of Fair Value Information

Not applicable

C. Other Fair Value Disclosures

The following tables provide information as of December 31, 2019 and 2018 about the Company's financial assets and liabilities, including those measured at other than fair value in the Statements of Admitted Assets, Liabilities, and Policyholders' Surplus.

December 31, 2019

	<u>Level 1</u>	<u>Level 2</u>	<u>Level 3</u>	<u>Net Asset Value (NAV)</u>	<u>Aggregate Fair Value</u>	<u>Admitted Assets</u>	<u>Not Practicable (Carrying Value)</u>
Assets at fair value (in 000's)							
securities	\$ 9,201	\$ 306,610	\$ -	\$ -	\$ 315,811	\$ 299,842	\$ -
Cash Equivalents	6,386	6,496	-	-	12,882	12,883	-
Preferred Stock		7,632	-	-	7,632	7,449	-
Common stock	<u>38,640</u>	<u>231</u>	<u>-</u>	<u>10,202</u>	<u>49,073</u>	<u>49,073</u>	<u>-</u>
Total assets at fair value	<u>\$ 54,227</u>	<u>\$ 320,969</u>	<u>\$ -</u>	<u>\$ 10,202</u>	<u>\$ 385,398</u>	<u>\$ 369,247</u>	<u>\$ -</u>

December 31, 2018

	<u>Level 1</u>	<u>Level 2</u>	<u>Level 3</u>	<u>Net Asset Value (NAV)</u>	<u>Aggregate Fair Value</u>	<u>Admitted Assets</u>	<u>Not Practicable (Carrying Value)</u>
Assets at fair value (in 000's)							
Bonds and debt securities	\$ 11,243	\$ 292,439	\$ -	\$ -	\$ 303,682	\$ 304,274	\$ -
Cash Equivalents	6,934	-	-	-	6,934	6,934	-
Preferred Stock		8,524	-	-	8,524	8,671	-
Common stock	<u>33,846</u>	<u>231</u>	<u>-</u>	<u>-</u>	<u>34,077</u>	<u>34,077</u>	<u>-</u>
Total assets at fair value	<u>\$ 52,023</u>	<u>\$ 301,194</u>	<u>\$ -</u>	<u>\$ -</u>	<u>\$ 353,217</u>	<u>\$ 353,956</u>	<u>\$ -</u>

NOTES TO FINANCIAL STATEMENTS

D. Reasons Not Practical to Estimate Fair Values

Not applicable

E. Investments Measured Using the NAV Practical Expedient

Not applicable

21. Other Items

A. Unusual or Infrequent Items

Not applicable

B. Trouble Debt Restructuring for Debtors

Not applicable

C. Other Disclosures

No securities other than those indicated in Schedule E Part 3 have been pledged as collateral.

D. Business Interruption Insurance Recoveries

Not applicable

E. State Transferable Tax Credits

During 2019, \$8,354,910 of transferable state tax credits were purchased at a cost of \$6,934,575. These credits will be evenly spread over the five year period between 2019 and 2023. During 2018, \$2,250,000 of 2019 transferable state tax credits were purchased at a cost of \$2,070,000 and are payable in 2020.

1. Carrying Value of Transferable State Tax Credits

<u>Description of State Transferable Tax Credits</u>	<u>State</u>	<u>Carrying Value</u>	<u>Unused Amount</u>
Hope Artiste Residential, LLC	RI	\$2,070,000	\$2,250,000
River House -Rebuild Rhode Island	RI	\$5,547,660	\$6,683,928

2. Method of Estimating Utilization of Remaining Transferable and Non-transferable State Tax Credits

The Company estimated the utilization of the remaining transferable and non-transferable state tax credits by projecting future premium taking into account policy growth and rate changes, projecting future tax liability based on projected premium, tax rates and tax credits, and comparing projected future tax liability to the availability of remaining transferable and non-transferable state tax credits.

3. Impairment Loss

Not applicable.

4. State Tax Credits Admitted and NonAdmitted

	<u>Total Admitted</u>	<u>Total Nonadmitted</u>
a. Transferable	\$7,617,660	\$0
b. Non-transferable	\$0	\$0

F. Subprime Mortgage Related Risk Exposure

- The Company's exposure to subprime lending is limited to investments within the fixed income investment portfolio which contains asset-backed securities that are backed by subprime loans. The Company believes its greatest exposure is to unrealized losses from declines in asset values rather than realized losses resulting from future defaults. The Company manages its subprime risk exposure by limiting its holdings in these types of securities, continuing its conservative investment guidelines, maintaining high credit quality investments, and performing ongoing

NOTES TO FINANCIAL STATEMENTS

analysis of its portfolio.

2. Direct Exposure – Mortgage Loans

Not applicable

3. Direct Exposures – Other Investment Classes

a. Structured Securities

The values of structured securities in the investment portfolio with subprime exposure are as indicated below. These securities represent less than 1% of the total fixed income investment portfolio.

	Cost	Book/Adjusted Carrying Value	Fair Value	Other-Than-Temporary Impairments Recognized	Rating
Subprime/HELOC	\$29,864	\$38,095	\$41,741	-	CCC

4. Underwriting Exposure

Not applicable

B. Insurance-linked Securities

Not applicable

22. Events Subsequent

There were no events occurring subsequent to the end of the current year through the date of this filing meriting disclosure.

23. Reinsurance

A. Unsecured Reinsurance Recoverables

Unsecured reinsurance recoverable for losses, paid and unpaid including IBNR, loss adjustment expenses, and unearned premium in excess of 3% of the Company's policyholder surplus is as follows:

<u>NAIC Code</u>	<u>Federal ID#</u>	<u>Name of Reinsurance</u>	(000 omitted) <u>Amount</u>
22039	13-2673100	General Reinsurance Corp.	\$23,310

B. Reinsurance Recoverables in Dispute

The Company has no reinsurance recoverable balances in dispute at December 31, 2019.

C. Reinsurance Assumed and Ceded and Protected Cells

All reinsurance premiums are paid on earned premium; therefore, return commission is zero. At December 31, 2019, the unearned premium reserves for direct and assumed premiums were \$55,310,467 and \$1,343,186 respectively. The unearned premium reserves for ceded premiums was \$80,322 at December 31, 2019.

Certain ceded reinsurance contracts provide for additional or return contingent commission based on actual loss experience of the reinsured business. The annual contingent commission adjustment was settled during 2019 and there is no payable or receivable at December 31, 2019.

D. Uncollectible Reinsurance

None

E. Commutation of Ceded Reinsurance

The Company commuted one reinsurance contract during 2019 with General Reinsurance Corp. The Company recognized the amounts received from the reinsurer as a reduction to losses and direct cost containment (DCC) paid and reduced reserves to recognize the effect of releasing the reinsurer from its obligation under the contract. The net effect of the commutation was an increase in losses incurred and DCC incurred. This amount is shown below by Statement of Income classification:

NOTES TO FINANCIAL STATEMENTS

Losses Incurred	\$ (116,638)
DCC Incurred	<u>(3,735)</u>
	\$ (120,373)

The gains or losses resulting from commutations are not recognized until the dates of final settlement between the Company and the reinsurer.

F. Retroactive Reinsurance

Part (1)

1. Reserves Transferred:	Assumed
a. Initial Reserves	(\$1,845,479)
b. Adjustments – Prior Yr.	268,239
c. Adjustments – Current Yr.	<u>(30,780)</u>
d. Current Total	(\$1,608,020)
2. Consideration Paid or Received:	
a. Initial Consideration	\$ 1,845,479
b. Adjustments – Prior Yr.	-
c. Adjustments – Current Yr.	<u>-</u>
d. Current Total	\$ 1,845,479
3. Paid Losses Reimbursed or Recovered:	
a. Prior Year	\$ 1,623,363
b. Current Year	<u>30,780</u>
c. Current Total	\$ 1,654,143
4. Special Surplus from Retroactive Reinsurance:	
a. Initial Surplus Gain or Loss	\$ -
b. Adjustments – Prior Year	268,239
c. Adjustments – Current Year	<u>(30,780)</u>
d. Current Year Restricted Surplus	-
e. Cumulative total Transferred to Unassigned Funds	\$ 237,459

In 2019, the Company has no ceded retroactive reinsurance.

5. Insurers included in the above transactions:

Fairfield Insurance	NAIC#44784	\$1,608,020
---------------------	------------	-------------

G. Reinsurance Accounted for as a Deposit

Not applicable

H. Transfer of Property and Casualty Run-off Agreements

Not applicable

I. Certified Reinsurer Rating Downgraded

Not applicable

J. Reinsurance Agreements Qualifying for Reinsurer Aggregation

Not applicable

24. Retrospectively Rated Contracts and Contracts Subject to Redetermination

A. Method Used to Estimate

The Company maintains a shared earnings program in support of its loss prevention and claim cost containment initiatives. Shared earnings are computed 18 months after policy inception based on an individual policy's incurred loss experience. These shared plans are estimated, accrued and accounted for as retrospectively rated policies.

B. Method Used to Record

NOTES TO FINANCIAL STATEMENTS

The Company records the retrospective premium accruals as earned by adjusting unearned premiums. These amounts are not recorded as premiums written until they are billed to the policyholders. Return premiums are recorded as liabilities and additional premiums are recorded as assets.

C. Amount and Percent of Net Retrospective Premiums

See Schedule P - Part 7A

D. Medical Loss Ratio Rebates

Not applicable

E. Calculation of Nonadmitted Accrued Retrospective Premiums

Not applicable

F. Risk-Sharing Provisions of the Affordable Care Act (ACA)

Not applicable

25. Changes in Incurred Losses and Loss Adjustment Expenses

The estimated cost of loss and loss adjustment expenses attributable to insured events of prior years increased by \$1.6 million during 2019. Increases of this nature take place as the result of commutation of claims during the year, increased severity of claims within reinsurance retention levels, and the ongoing review of claim reserves as additional information becomes available.

26. Intercompany Pooling Arrangements

Not applicable

27. Structured Settlements

a. Reserves Released due to Purchase of Annuities

The Company has purchased annuities with the claimant as payee and has received a signed release from the claimant eliminating any future liability for the Company. The Company has released reserves of \$2,466,321 and \$1,665,307 through the purchase of annuities during 2019 and 2018, respectively.

b. Annuity Life Insurers with Balances due Greater than 1% of Policyholder's Surplus

Not applicable

28. Health Care Receivables

Not applicable

29. Participating Policies

Not applicable

30. Premium Deficiency Reserves

The Company anticipates investment income as a factor in the premium deficiency calculation in accordance with SSAP No. 53 - Property-Casualty Contract Premiums and was not required to record a premium deficiency reserve as of December 31, 2019.

31. High Deductibles

The Company has no High Deductible plans.

32. Discounting of Liabilities for Unpaid Losses and Unpaid Loss Adjustment Expenses

The Company does not discount unpaid losses and unpaid loss adjustment expenses.

33. Asbestos/Environmental Reserves

The likelihood of material liability related to asbestos and environmental loss is remote since reported claim activity levels are minimal and the Company does not write lines of business which are typically exposed to such losses. To-date, payments of \$830,652 have been made for 20 claims including denial and dismissal settlements and claim related expenses; there are currently no outstanding reserves.

NOTES TO FINANCIAL STATEMENTS

34. Subscriber Savings Accounts

Not applicable

35. Multiple Peril Crop Insurance

Not applicable

36. Financial Guaranty Insurance

Not applicable

GENERAL INTERROGATORIES

PART 1 – COMMON INTERROGATORIES

GENERAL

- 1.1 Is the reporting entity a member of an Insurance Holding Company System consisting of two or more affiliated persons, one or more of which is an insurer? Yes No]
- If yes, complete Schedule Y, Parts 1, 1A and 2.
- 1.2 If yes, did the reporting entity register and file with its domiciliary State Insurance Commissioner, Director or Superintendent or with such regulatory official of the state of domicile of the principal insurer in the Holding Company System, a registration statement providing disclosure substantially similar to the standards adopted by the National Association of Insurance Commissioners (NAIC) in its Model Insurance Holding Company System Regulatory Act and model regulations pertaining thereto, or is the reporting entity subject to standards and disclosure requirements substantially similar to those required by such Act and regulations? Yes No] N/A]
- 1.3 State Regulating? Rhode Island
- 1.4 Is the reporting entity publicly traded or a member of a publicly traded group? Yes No]
- 1.5 If the response to 1.4 is yes, provide the CIK (Central Index Key) code issued by the SEC for the entity/group.
- 2.1 Has any change been made during the year of this statement in the charter, by-laws, articles of incorporation, or deed of settlement of the reporting entity? Yes No]
- 2.2 If yes, date of change: _____
- 3.1 State as of what date the latest financial examination of the reporting entity was made or is being made. 12/31/2015
- 3.2 State the as of date that the latest financial examination report became available from either the state of domicile or the reporting entity. This date should be the date of the examined balance sheet and not the date the report was completed or released. 12/31/2015
- 3.3 State as of what date the latest financial examination report became available to other states or the public from either the state of domicile or the reporting entity. This is the release date or completion date of the examination report and not the date of the examination (balance sheet date). 04/05/2017
- 3.4 By what department or departments?
Department of Business Regulation, State of Rhode Island

- 3.5 Have all financial statement adjustments within the latest financial examination report been accounted for in a subsequent financial statement filed with departments? Yes No] N/A]
- 3.6 Have all of the recommendations within the latest financial examination report been complied with? Yes No] N/A]
- 4.1 During the period covered by this statement, did any agent, broker, sales representative, non-affiliated sales/service organization or any combination thereof under common control (other than salaried employees of the reporting entity) receive credit or commissions for or control a substantial part (more than 20 percent of any major line of business measured on direct premiums) of:
- 4.11 sales of new business? Yes No]
- 4.12 renewals? Yes No]
- 4.2 During the period covered by this statement, did any sales/service organization owned in whole or in part by the reporting entity or an affiliate, receive credit or commissions for or control a substantial part (more than 20 percent of any major line of business measured on direct premiums) of:
- 4.21 sales of new business? Yes No]
- 4.22 renewals? Yes No]
- 5.1 Has the reporting entity been a party to a merger or consolidation during the period covered by this statement? Yes No]
- If yes, complete and file the merger history data file with the NAIC.

GENERAL INTERROGATORIES

5.2 If yes, provide the name of the entity, NAIC Company Code, and state of domicile (use two letter state abbreviation) for any entity that has ceased to exist as a result of the merger or consolidation.

1 Name of Entity	2 NAIC Company Code	3 State of Domicile

6.1 Has the reporting entity had any Certificates of Authority, licenses or registrations (including corporate registration, if applicable) suspended or revoked by any governmental entity during the reporting period? Yes [] No [X]

6.2 If yes, give full information:

.....

7.1 Does any foreign (non-United States) person or entity directly or indirectly control 10% or more of the reporting entity? Yes [] No [X]

7.2 If yes,

7.21 State the percentage of foreign control. _____ %

7.22 State the nationality(s) of the foreign person(s) or entity(s); or if the entity is a mutual or reciprocal, the nationality of its manager or attorney-in-fact and identify the type of entity(s) (e.g., individual, corporation, government, manager or attorney-in-fact).

1 Nationality	2 Type of Entity

8.1 Is the company a subsidiary of a bank holding company regulated by the Federal Reserve Board? Yes [] No [X]

8.2 If response to 8.1 is yes, please identify the name of the bank holding company.

.....

8.3 Is the company affiliated with one or more banks, thrifts or securities firms? Yes [] No [X]

8.4 If response to 8.3 is yes, please provide the names and locations (city and state of the main office) of any affiliates regulated by a federal financial regulatory services agency [i.e. the Federal Reserve Board (FRB), the Office of the Comptroller of the Currency (OCC), the Federal Deposit Insurance Corporation (FDIC) and the Securities Exchange Commission (SEC)] and identify the affiliate's primary federal regulator.

1 Affiliate Name	2 Location (City, State)	3 FRB	4 OCC	5 FDIC	6 SEC

9. What is the name and address of the independent certified public accountant or accounting firm retained to conduct the annual audit?

Johnson Lambert LLP, One Lawson Lane, Box 525, Burlington, Vermont 05402

10.1 Has the insurer been granted any exemptions to the prohibited non-audit services provided by the certified independent public accountant requirements as allowed in Section 7H of the Annual Financial Reporting Model Regulation (Model Audit Rule), or substantially similar state law or regulation? Yes [] No [X]

10.2 If response to 10.1 is yes, provide information related to this exemption:

.....

GENERAL INTERROGATORIES

10.3 Has the insurer been granted any exemptions related to the other requirements of the Annual Financial Reporting Model Regulation as allowed for in Section 18A of the Model Regulation, or substantially similar state law or regulation? Yes [] No [X]

10.4 If response to 10.3 is yes, provide information related to this exemption:

10.5 Has the reporting entity established an Audit Committee in compliance with the domiciliary state insurance laws? Yes [X] No [] N/A []

10.6 If the response to 10.5 is no or n/a, please explain.

11. What is the name, address and affiliation (officer/employee of the reporting entity or actuary/consultant associated with an actuarial consulting firm) of the individual providing the statement of actuarial opinion/certification?
 Yi Jing, Willis Towers Watson, 175 Powder Forest Drive, Weatogue, CT 06089-9658

12.1 Does the reporting entity own any securities of a real estate holding company or otherwise hold real estate indirectly? Yes [] No [X]

12.11 Name of real estate holding company	
12.12 Number of parcels involved	
12.13 Total book/adjusted carrying value	\$

12.2 If yes, provide explanation:

13. FOR UNITED STATES BRANCHES OF ALIEN REPORTING ENTITIES ONLY:

13.1 What changes have been made during the year in the United States manager or the United States trustees of the reporting entity?
 N/A

13.2 Does this statement contain all business transacted for the reporting entity through its United States Branch on risks wherever located? Yes [] No [X]

13.3 Have there been any changes made to any of the trust indentures during the year? Yes [] No [X]

13.4 If answer to (13.3) is yes, has the domiciliary or entry state approved the changes? Yes [] No [] N/A [X]

14.1 Are the senior officers (principal executive officer, principal financial officer, principal accounting officer or controller, or persons performing similar functions) of the reporting entity subject to a code of ethics, which includes the following standards?

- a. Honest and ethical conduct, including the ethical handling of actual or apparent conflicts of interest between personal and professional relationships;
- b. Full, fair, accurate, timely and understandable disclosure in the periodic reports required to be filed by the reporting entity;
- c. Compliance with applicable governmental laws, rules, and regulations;
- d. The prompt internal reporting of violations to an appropriate person or persons identified in the code; and
- e. Accountability for adherence to the code.

Yes [X] No []

14.11 If the response to 14.1 is no, please explain:

GENERAL INTERROGATORIES

14.2 Has the code of ethics for senior managers been amended? Yes No

14.21 If the response to 14.2 is yes, provide information related to amendment(s).
 Policy amended on 1/2/20. The Policy and Acknowledgement have been amended in relation to requirements under federal law regarding individuals engaged in the business of insurance who have been convicted of a felony involving dishonesty or breach of trust. The annual disclosure obligations have been updated to ensure compliance with these requirements.

14.3 Have any provisions of the code of ethics been waived for any of the specified officers? Yes No

14.31 If the response to 14.3 is yes, provide the nature of any waiver(s).

15.1 Is the reporting entity the beneficiary of a Letter of Credit that is unrelated to reinsurance where the issuing or confirming bank is not on the SVO Bank List? Yes No

15.2 If the response to 15.1 is yes, indicate the American Bankers Association (ABA) Routing Number and the name of the issuing or confirming bank of the Letter of Credit and describe the circumstances in which the Letter of Credit is triggered.

1 American Bankers Association (ABA) Routing Number	2 Issuing or Confirming Bank Name	3 Circumstances That Can Trigger the Letter of Credit	4 Amount
.....

BOARD OF DIRECTORS

16. Is the purchase or sale of all investments of the reporting entity passed upon either by the board of directors or a subordinate committee thereof? Yes No

17. Does the reporting entity keep a complete permanent record of the proceedings of its board of directors and all subordinate committees thereof? Yes No

18. Has the reporting entity an established procedure for disclosure to its board of directors or trustees of any material interest or affiliation on the part of any of its officers, directors, trustees or responsible employees that is in conflict or is likely to conflict with the official duties of such person? Yes No

FINANCIAL

19. Has this statement been prepared using a basis of accounting other than Statutory Accounting Principles (e.g., Generally Accepted Accounting Principles)? Yes No

20.1 Total amount loaned during the year (inclusive of Separate Accounts, exclusive of policy loans):

20.11	To directors or other officers	\$ _____
20.12	To stockholders not officers	\$ _____
20.13	Trustees, supreme or grand (Fraternal only)	\$ _____

20.2 Total amount of loans outstanding at the end of year (inclusive of Separate Accounts, exclusive of policy loans):

20.21	To directors or other officers	\$ _____
20.22	To stockholders not officers	\$ _____
20.23	Trustees, supreme or grand (Fraternal only)	\$ _____

21.1 Were any assets reported in this statement subject to a contractual obligation to transfer to another party without the liability for such obligation being reported in the statement? Yes No

21.2 If yes, state the amount thereof at December 31 of the current year:

21.21	Rented from others	\$ _____
21.22	Borrowed from others	\$ _____
21.23	Leased from others	\$ _____
21.24	Other	\$ _____

GENERAL INTERROGATORIES

- 22.1 Does this statement include payments for assessments as described in the Annual Statement Instructions other than guaranty fund or guaranty association assessments? Yes [] No [X]
- 22.2 If answer is yes:
- | | | |
|--|--|----------|
| | 22.21 Amount paid as losses or risk adjustment | \$ _____ |
| | 22.22 Amount paid as expenses | \$ _____ |
| | 22.23 Other amounts paid | \$ _____ |
- 23.1 Does the reporting entity report any amounts due from parent, subsidiaries or affiliates on Page 2 of this statement? Yes [] No [X]
- 23.2 If yes, indicate any amounts receivable from parent included in the Page 2 amount: \$ _____

INVESTMENT

- 24.01 Were all the stocks, bonds and other securities owned December 31 of current year, over which the reporting entity has exclusive control, in the actual possession of the reporting entity on said date? (other than securities lending programs addressed in 24.03) Yes [X] No []
- 24.02 If no, give full and complete information, relating thereto:

- 24.03 For security lending programs, provide a description of the program including value for collateral and amount of loaned securities, and whether collateral is carried on or off-balance sheet. (an alternative is to reference Note 17 where this information is also provided)

- 24.04 Does the company's security lending program meet the requirements for a conforming program as outlined in the Risk-Based Capital Instructions? Yes [] No [] N/A [X]
- 24.05 If answer to 24.04 is yes, report amount of collateral for conforming programs. \$ _____
- 24.06 If answer to 24.04 is no, report amount of collateral for other programs. \$ _____
- 24.07 Does your securities lending program require 102% (domestic securities) and 105% (foreign securities) from the counterparty at the outset of the contract? Yes [] No [] N/A [X]
- 24.08 Does the reporting entity non-admit when the collateral received from the counterparty falls below 100%? Yes [] No [] N/A [X]
- 24.09 Does the reporting entity or the reporting entity's securities lending agent utilize the Master Securities Lending Agreement (MSLA) to conduct securities lending? Yes [] No [] N/A [X]
- 24.10 For the reporting entity's security lending program, state the amount of the following as of December 31 of the current year:
- | | | |
|--|--|----------|
| 24.101 Total fair value of reinvested collateral assets reported on Schedule DL, Parts 1 and 2 | | \$ _____ |
| 24.102 Total book adjusted/carrying value of reinvested collateral assets reported on Schedule DL, Parts 1 and 2 | | \$ _____ |
| 24.103 Total payable for securities lending reported on the liability page | | \$ _____ |
- 25.1 Were any of the stocks, bonds or other assets of the reporting entity owned at December 31 of the current year not exclusively under the control of the reporting entity or has the reporting entity sold or transferred any assets subject to a put option contract that is currently in force? (Exclude securities subject to Interrogatory 21.1 and 24.03). Yes [X] No []

GENERAL INTERROGATORIES

25.2 If yes, state the amount thereof at December 31 of the current year:

	25.21 Subject to repurchase agreements	\$ _____
	25.22 Subject to reverse repurchase agreements	\$ _____
	25.23 Subject to dollar repurchase agreements	\$ _____
	25.24 Subject to reverse dollar repurchase agreements	\$ _____
	25.25 Placed under option agreements	\$ _____
	25.26 Letter stock or securities restricted as to sale - excluding FHLB Capital Stock	\$ _____
	25.27 FHLB Capital Stock	\$ <u>231,200</u>
	25.28 On deposit with states	\$ <u>816,646</u>
	25.29 On deposit with other regulatory bodies	\$ <u>448,631</u>
	25.30 Pledged as collateral - excluding collateral pledged to an FHLB	\$ <u>19,549,989</u>
	25.31 Pledged as collateral to FHLB - including assets backing funding agreements	\$ _____
	25.32 Other	\$ _____

25.3 For category (25.26) provide the following:

1 Nature of Restriction	2 Description	3 Amount
.....
.....

26.1 Does the reporting entity have any hedging transactions reported on Schedule DB? Yes [] No [X]

26.2 If yes, has a comprehensive description of the hedging program been made available to the domiciliary state? Yes [] No [] N/A [X]
If no, attach a description with this statement.

LINES 26.3 through 26.5 : FOR LIFE/FRATERNAL REPORTING ENTITIES ONLY:

26.3 Does the reporting entity utilize derivatives to hedge variable annuity guarantees subject to fluctuations as a result of interest rate sensitivity? Yes [] No []

26.4 If the response to 26.3 is YES, does the reporting entity utilize:

	26.41 Special accounting provision of SSAP No. 108	Yes [] No []
	26.42 Permitted accounting practice	Yes [] No []
	26.43 Other accounting guidance	Yes [] No []

26.5 By responding YES to 26.41 regarding utilizing the special accounting provisions of SSAP No. 108, the reporting entity attests to the following: Yes [] No []

- The reporting entity has obtained explicit approval from the domiciliary state.
- Hedging strategy subject to the special accounting provisions is consistent with the requirements of VM-21.
- Actuarial certification has been obtained which indicates that the hedging strategy is incorporated within the establishment of VM-21 reserves and provides the impact of the hedging strategy within the Actuarial Guideline Conditional Tail Expectation Amount.
- Financial Officer Certification has been obtained which indicates that the hedging strategy meets the definition of a Clearly Defined Hedging Strategy within VM-21 and that the Clearly Defined Hedging Strategy is the hedging strategy being used by the company in its actual day-to-day risk mitigation efforts.

27.1 Were any preferred stocks or bonds owned as of December 31 of the current year mandatorily convertible into equity, or, at the option of the issuer, convertible into equity? Yes [] No [X]

27.2 If yes, state the amount thereof at December 31 of the current year. \$ _____

28. Excluding items in Schedule E - Part 3 - Special Deposits, real estate, mortgage loans and investments held physically in the reporting entity's offices, vaults or safety deposit boxes, were all stocks, bonds and other securities, owned throughout the current year held pursuant to a custodial agreement with a qualified bank or trust company in accordance with Section 1, III - General Examination Considerations, F. Outsourcing of Critical Functions, Custodial or Safekeeping Agreements of the NAIC Financial Condition Examiners Handbook? Yes [X] No []

GENERAL INTERROGATORIES

28.01 For agreements that comply with the requirements of the NAIC Financial Condition Examiners Handbook, complete the following:

1 Name of Custodian(s)	2 Custodian's Address
Bank of America, National Association	135 South LaSalle Street, Chicago, IL 60603
MUFG Union Bank, N.A.	1251 Avenue of the Americas, 19th Floor, New York, NY 10020

28.02 For all agreements that do not comply with the requirements of the NAIC Financial Condition Examiners Handbook, provide the name, location and a complete explanation:

1 Name(s)	2 Location(s)	3 Complete Explanation(s)

28.03 Have there been any changes, including name changes, in the custodian(s) identified in 28.01 during the current year? Yes No

28.04 If yes, give full and complete information relating thereto:

1 Old Custodian	2 New Custodian	3 Date of Change	4 Reason
None	MUFG Union Bank, N.A.	09/16/2019	New Mutual Fund purchased

28.05 Investment management - Identify all investment advisors, investment managers, broker/dealers, including individuals that have the authority to make investment decisions on behalf of the reporting entity. For assets that are managed internally by employees of the reporting entity, note as such. ["... that have access to the investment accounts"; "...handle securities"]

1 Name Firm or Individual	2 Affiliation
New England Asset Management	U

28.0597 For those firms/individuals listed in the table for Question 28.05, do any firms/individuals unaffiliated with the reporting entity (i.e., designated with a "U") manage more than 10% of the reporting entity's invested assets? Yes No

28.0598 For firms/individuals unaffiliated with the reporting entity (i.e., designated with a "U") listed in the table for Question 28.05, does the total assets under management aggregate to more than 50% of the reporting entity's invested assets? Yes No

28.06 For those firms or individuals listed in the table 28.05 with an affiliation code of "A" (affiliated) or "U" (unaffiliated), provide the information for the table below.

1 Name Firm or Individual	2 Central Registration Depository Number	3 Legal Entity Identifier (LEI)	4 Registered With	5 Investment Management Agreement (IMA) Filed
New England Asset Management	105900	KUR85E5PS4GQZTFC130	Securities Exchange Commission	NO

29.1 Does the reporting entity have any diversified mutual funds reported in Schedule D – Part 2 (diversified according to the Securities and Exchange Commission (SEC) in the Investment Company Act of 1940 [Section 5 (b) (1)])? Yes No

29.2 If yes, complete the following schedule:

1 CUSIP #	2 Name of Mutual Fund	3 Book/Adjusted Carrying Value
02110A-69-6	DDJ CAP OPPORTUNITY H/Y INST	10,201,893
78462F-10-3	SPDR S&P 500 ETF TRUST	12,953,256

GENERAL INTERROGATORIES

1 CUSIP #	2 Name of Mutual Fund	3 Book/Adjusted Carrying Value
29.2999 TOTAL		23,155,149

29.3 For each mutual fund listed in the table above, complete the following schedule:

1 Name of Mutual Fund (from above table)	2 Name of Significant Holding of the Mutual Fund	3 Amount of Mutual Fund's Book/Adjusted Carrying Value Attributable to the Holding	4 Date of Valuation
SPDR S&P500 ETF TRUST	Microsoft Corp	591,964	12/31/2019
SPDR S&P500 ETF TRUST	Apple, Inc.	580,306	12/31/2019
SPDR S&P500 ETF TRUST	Amazon.com, Inc.	371,758	12/31/2019
SPDR S&P500 ETF TRUST	Facebook, Inc.	238,340	12/31/2019
SPDR S&P500 ETF TRUST	Berkshire Hathaway, Inc.	213,729	12/31/2019
DDJ CAP OPPORTUNITY H/Y	Asurion	516,835	12/31/2019
DDJ CAP OPPORTUNITY H/Y	Century Aluminum	419,685	12/31/2019
DDJ CAP OPPORTUNITY H/Y	Uniti Group	410,618	12/31/2019
DDJ CAP OPPORTUNITY H/Y	Pharmaceutical Product	389,893	12/31/2019
DDJ CAP OPPORTUNITY H/Y	MultiPlan	388,598	12/31/2019

30. Provide the following information for all short-term and long-term bonds and all preferred stocks. Do not substitute amortized value or statement value for fair value.

	1 Statement (Admitted) Value	2 Fair Value	3 Excess of Statement over Fair Value (-), or Fair Value over Statement (+)
30.1 Bonds	306,337,983	322,307,137	15,969,154
30.2 Preferred stocks	7,449,412	7,632,170	182,758
30.3 Totals	313,787,395	329,939,307	16,151,912

30.4 Describe the sources or methods utilized in determining the fair values:

Fair values are based on end of period prices provided by independent pricing services (vendor price) such as: Refinitiv, ICE Data Services, Bloomberg, IHS Markit, IHS Markit iBoxx, Best Credit Data or PricingDirect. Short term securities are valued at amortized cost. Cash Equivalents, excluding money market mutual funds, are valued at amortized cost. Under certain circumstances, if a vendor price is unavailable, a price may be obtained from a broker.

31.1 Was the rate used to calculate fair value determined by a broker or custodian for any of the securities in Schedule D? Yes [] No [X]

31.2 If the answer to 31.1 is yes, does the reporting entity have a copy of the broker's or custodian's pricing policy (hard copy or electronic copy) for all brokers or custodians used as a pricing source? Yes [] No [X]

31.3 If the answer to 31.2 is no, describe the reporting entity's process for determining a reliable pricing source for purposes of disclosure of fair value for Schedule D:
Not applicable.

32.1 Have all the filing requirements of the Purposes and Procedures Manual of the NAIC Investment Analysis Office been followed? Yes [X] No []

32.2 If no, list exceptions:
.....
.....
.....

33 By self-designating 5GI securities, the reporting entity is certifying the following elements of each self-designated 5GI security:

- a. Documentation necessary to permit a full credit analysis of the security does not exist or an NAIC CRP credit rating for an FE or PL security is not available.
- b. Issuer or obligor is current on all contracted interest and principal payments.
- c. The insurer has an actual expectation of ultimate payment of all contracted interest and principal.

Has the reporting entity self-designated 5GI securities? Yes [] No [X]

GENERAL INTERROGATORIES

34 By self-designating PLGI securities, the reporting entity is certifying the following elements of each self-designated PLGI security:

- a. The security was purchased prior to January 1, 2018.
- b. The reporting entity is holding capital commensurate with the NAIC Designation reported for the security.
- c. The NAIC Designation was derived from the credit rating assigned by an NAIC CRP in its legal capacity as an NRSRO which is shown on a current private letter rating held by the insurer and available for examination by state insurance regulators.
- d. The reporting entity is not permitted to share this credit rating of the PL security with the SVO.

Has the reporting entity self-designated PLGI securities? Yes [] No [X]

35. By assigning FE to a Schedule BA non-registered private fund, the reporting entity is certifying the following elements of each self-designated FE fund:

- a. The shares were purchased prior to January 1, 2019.
- b. The reporting entity is holding capital commensurate with the NAIC Designation reported for the security.
- c. The security had a public credit rating(s) with annual surveillance assigned by an NAIC CRP in its legal capacity as an NRSRO prior to January 1, 2019.
- d. The fund only or predominantly holds bonds in its portfolio.
- e. The current reported NAIC Designation was derived from the public credit rating(s) with annual surveillance assigned by an NAIC CRP in its legal capacity as an NRSRO.
- f. The public credit rating(s) with annual surveillance assigned by an NAIC CRP has not lapsed.

Has the reporting entity assigned FE to Schedule BA non-registered private funds that complied with the above criteria? Yes [] No [X]

OTHER

36.1 Amount of payments to trade associations, service organizations and statistical or Rating Bureaus, if any? \$ 596,065

36.2 List the name of the organization and the amount paid if any such payment represented 25% or more of the total payments to trade associations, service organizations and statistical or rating bureaus during the period covered by this statement.

1 Name	2 Amount Paid
NCCI	\$ 567,430
.....	\$
.....	\$

37.1 Amount of payments for legal expenses, if any? \$ 185,077

37.2 List the name of the firm and the amount paid if any such payment represented 25% or more of the total payments for legal expenses during the period covered by this statement.

1 Name	2 Amount Paid
Partridge, Snow & Hahn	\$ 56,839
.....	\$
.....	\$

38.1 Amount of payments for expenditures in connection with matters before legislative bodies, officers or departments of government, if any? \$ 85,000

38.2 List the name of the firm and the amount paid if any such payment represented 25% or more of the total payment expenditures in connection with matters before legislative bodies, officers or departments of government during the period covered by this statement.

1 Name	2 Amount Paid
Roberts, Carroll, Feldstein & Peirce	\$ 50,000
Government Strategies, Inc.	\$ 25,000
.....	\$

GENERAL INTERROGATORIES

PART 2 – PROPERTY & CASUALTY INTERROGATORIES

1.1 Does the reporting entity have any direct Medicare Supplement Insurance in force? Yes [] No [X]

1.2 If yes, indicate premium earned on U.S. business only. \$ _____

1.3 What portion of Item (1.2) is not reported on the Medicare Supplement Insurance Experience Exhibit? \$ _____

1.31 Reason for excluding

.....

1.4 Indicate amount of earned premium attributable to Canadian and/or Other Alien not included in Item (1.2) above. \$ _____

1.5 Indicate total incurred claims on all Medicare Supplement insurance. \$ _____

1.6 Individual policies:

Most current three years:

1.61 Total premium earned \$ _____

1.62 Total incurred claims \$ _____

1.63 Number of covered lives _____

All years prior to most current three years:

1.64 Total premium earned \$ _____

1.65 Total incurred claims \$ _____

1.66 Number of covered lives _____

1.7 Group policies:

Most current three years:

1.71 Total premium earned \$ _____

1.72 Total incurred claims \$ _____

1.73 Number of covered lives _____

All years prior to most current three years:

1.74 Total premium earned \$ _____

1.75 Total incurred claims \$ _____

1.76 Number of covered lives _____

2. Health Test:

	1	2
	Current Year	Prior Year
2.1 Premium Numerator	\$ _____	\$ _____
2.2 Premium Denominator	\$ 121,135,432	\$ 122,669,169
2.3 Premium Ratio (2.1 / 2.2)	_____	_____
2.4 Reserve Numerator	\$ _____	\$ _____
2.5 Reserve Denominator	\$ 239,484,313	\$ 240,465,165
2.6 Reserve Ratio (2.4 / 2.5)	_____	_____

3.1 Does the reporting entity issue both participating and non-participating policies? Yes [] No [X]

3.2 If yes, state the amount of calendar year premiums written on:

3.21 Participating policies \$ _____

3.22 Non-participating policies \$ _____

4. For Mutual reporting entities and Reciprocal Exchanges only:

4.1 Does the reporting entity issue assessable policies? Yes [] No [X]

4.2 Does the reporting entity issue non-assessable policies? Yes [X] No []

4.3 If assessable policies are issued, what is the extent of the contingent liability of the policyholders? _____ %

4.4 Total amount of assessments paid or ordered to be paid during the year on deposit notes or contingent premiums. \$ _____

5. For Reciprocal Exchanges Only:

5.1 Does the exchange appoint local agents? Yes [] No [X]

5.2 If yes, is the commission paid:

5.21 Out of Attorney's-in-fact compensation Yes [] No [] N/A [X]

5.22 As a direct expense of the exchange Yes [] No [] N/A [X]

5.3 What expenses of the Exchange are not paid out of the compensation of the Attorney-in-fact?

.....

5.4 Has any Attorney-in-fact compensation, contingent on fulfillment of certain conditions, been deferred? Yes [] No [X]

5.5 If yes, give full information

.....

6.1 What provision has this reporting entity made to protect itself from an excessive loss in the event of a catastrophe under a workers' compensation contract issued without limit loss:

The Company has excess of loss workers' compensation treaties, as well as catastrophe coverage which provides additional protection.

.....

GENERAL INTERROGATORIES

PART 2 – PROPERTY & CASUALTY INTERROGATORIES

- 6.2 Describe the method used to estimate this reporting entity's probable maximum insurance loss, and identify the type of insured exposures comprising that probable maximum loss, the locations of concentrations of those exposures and the external resources (such as consulting firms or computer software models), if any, used in the estimation process:
 N/A The Company is a monoline workers' compensation carrier.
- 6.3 What provision has this reporting entity made (such as a catastrophic reinsurance program) to protect itself from an excessive loss arising from the types and concentrations of insured exposures comprising its probable maximum property insurance loss?
 Property insurance is not written.
- 6.4 Does the reporting entity carry catastrophe reinsurance protection for at least one reinstatement, in an amount sufficient to cover its estimated probable maximum loss attributable to a single loss event or occurrence? Yes No
- 6.5 If no, describe any arrangements or mechanisms employed by the reporting entity to supplement its catastrophe reinsurance program or to hedge its exposure to unreinsured catastrophic loss
- 7.1 Has the reporting entity reinsured any risk with any other entity under a quota share reinsurance contract that includes a provision that would limit the reinsurer's losses below the stated quota share percentage (e.g., a deductible, a loss ratio corridor, a loss cap, an aggregate limit or any similar provisions)? Yes No
- 7.2 If yes, indicate the number of reinsurance contracts containing such provisions.
- 7.3 If yes, does the amount of reinsurance credit taken reflect the reduction in quota share coverage caused by any applicable limiting provision(s)? Yes No
- 8.1 Has this reporting entity reinsured any risk with any other entity and agreed to release such entity from liability, in whole or in part, from any loss that may occur on this risk, or portion thereof, reinsured? Yes No
- 8.2 If yes, give full information
 In 2002, 25 GenRe Insurance claims were capped at \$5,532,533 in the aggregate. Of the 25 capped claims, 23 are closed and will not have an impact on losses. Additionally, reinsurance claims with GenRe for the policy years 7/1/2003-6/30/2012 have been commuted.
- 9.1 Has the reporting entity ceded any risk under any reinsurance contract (or under multiple contracts with the same reinsurer or its affiliates) for which during the period covered by the statement: (i) it recorded a positive or negative underwriting result greater than 5% of prior year-end surplus as regards policyholders or it reported calendar year written premium ceded or year-end loss and loss expense reserves ceded greater than 5% of prior year-end surplus as regards policyholders; (ii) it accounted for that contract as reinsurance and not as a deposit; and (iii) the contract(s) contain one or more of the following features or other features that would have similar results:
 (a) A contract term longer than two years and the contract is noncancellable by the reporting entity during the contract term;
 (b) A limited or conditional cancellation provision under which cancellation triggers an obligation by the reporting entity, or an affiliate of the reporting entity, to enter into a new reinsurance contract with the reinsurer, or an affiliate of the reinsurer;
 (c) Aggregate stop loss reinsurance coverage;
 (d) A unilateral right by either party (or both parties) to commute the reinsurance contract, whether conditional or not, except for such provisions which are only triggered by a decline in the credit status of the other party;
 (e) A provision permitting reporting of losses, or payment of losses, less frequently than on a quarterly basis (unless there is no activity during the period); or
 (f) Payment schedule, accumulating retentions from multiple years or any features inherently designed to delay timing of the reimbursement to the ceding entity. Yes No
- 9.2 Has the reporting entity during the period covered by the statement ceded any risk under any reinsurance contract (or under multiple contracts with the same reinsurer or its affiliates), for which, during the period covered by the statement, it recorded a positive or negative underwriting result greater than 5% of prior year-end surplus as regards policyholders or it reported calendar year written premium ceded or year-end loss and loss expense reserves ceded greater than 5% of prior year-end surplus as regards policyholders; excluding cessions to approved pooling arrangements or to captive insurance companies that are directly or indirectly controlling, controlled by, or under common control with (i) one or more unaffiliated policyholders of the reporting entity, or (ii) an association of which one or more unaffiliated policyholders of the reporting entity is a member where:
 (a) The written premium ceded to the reinsurer by the reporting entity or its affiliates represents fifty percent (50%) or more of the entire direct and assumed premium written by the reinsurer based on its most recently available financial statement; or
 (b) Twenty-five percent (25%) or more of the written premium ceded to the reinsurer has been retroceded back to the reporting entity or its affiliates in a separate reinsurance contract. Yes No
- 9.3 If yes to 9.1 or 9.2, please provide the following information in the Reinsurance Summary Supplemental Filing for General Interrogatory 9:
 (a) The aggregate financial statement impact gross of all such ceded reinsurance contracts on the balance sheet and statement of income;
 (b) A summary of the reinsurance contract terms and indicate whether it applies to the contracts meeting the criteria in 9.1 or 9.2; and
 (c) A brief discussion of management's principle objectives in entering into the reinsurance contract including the economic purpose to be achieved.
- 9.4 Except for transactions meeting the requirements of paragraph 37 of SSAP No. 62R, Property and Casualty Reinsurance, has the reporting entity ceded any risk under any reinsurance contract (or multiple contracts with the same reinsurer or its affiliates) during the period covered by the financial statement, and either:
 (a) Accounted for that contract as reinsurance (either prospective or retroactive) under statutory accounting principles ("SAP") and as a deposit under generally accepted accounting principles ("GAAP"); or
 (b) Accounted for that contract as reinsurance under GAAP and as a deposit under SAP? Yes No
- 9.5 If yes to 9.4, explain in the Reinsurance Summary Supplemental Filing for General Interrogatory 9 (Section D) why the contract(s) is treated differently for GAAP and SAP.
- 9.6 The reporting entity is exempt from the Reinsurance Attestation Supplement under one or more of the following criteria:
 (a) The entity does not utilize reinsurance; or, Yes No
 (b) The entity only engages in a 100% quota share contract with an affiliate and the affiliated or lead company has filed an attestation supplement; or Yes No
 (c) The entity has no external cessions and only participates in an intercompany pool and the affiliated or lead company has filed an attestation supplement. Yes No

GENERAL INTERROGATORIES

PART 2 – PROPERTY & CASUALTY INTERROGATORIES

10. If the reporting entity has assumed risks from another entity, there should be charged on account of such reinsurances a reserve equal to that which the original entity would have been required to charge had it retained the risks. Has this been done? Yes No N/A
- 11.1 Has the reporting entity guaranteed policies issued by any other entity and now in force: Yes No
- 11.2 If yes, give full information

- 12.1 If the reporting entity recorded accrued retrospective premiums on insurance contracts on Line 15.3 of the asset schedule, Page 2, state the amount of corresponding liabilities recorded for:
- | | | | |
|---|--|----|--|
| 12.11 Unpaid losses | | \$ | |
| 12.12 Unpaid underwriting expenses (including loss adjustment expenses) | | \$ | |
- 12.2 Of the amount on Line 15.3, Page 2, state the amount that is secured by letters of credit, collateral and other funds? \$ _____
- 12.3 If the reporting entity underwrites commercial insurance risks, such as workers' compensation, are premium notes or promissory notes accepted from its insureds covering unpaid premiums and/or unpaid losses? Yes No N/A
- 12.4 If yes, provide the range of interest rates charged under such notes during the period covered by this statement:
- | | | | | |
|------------|--|--|--|---|
| 12.41 From | | | | % |
| 12.42 To | | | | % |
- 12.5 Are letters of credit or collateral and other funds received from insureds being utilized by the reporting entity to secure premium notes or promissory notes taken by a reporting entity or to secure any of the reporting entity's reported direct unpaid loss reserves, including unpaid losses under loss deductible features of commercial policies? Yes No
- 12.6 If yes, state the amount thereof at December 31 of current year:
- | | | | |
|----------------------------------|--|----|--|
| 12.61 Letters of Credit | | \$ | |
| 12.62 Collateral and other funds | | \$ | |
- 13.1 Largest net aggregate amount insured in any one risk (excluding workers' compensation): \$ _____
- 13.2 Does any reinsurance contract considered in the calculation of this amount include an aggregate limit of recovery without also including a reinstatement provision? Yes No
- 13.3 State the number of reinsurance contracts (excluding individual facultative risk certificates, but including facultative programs, automatic facilities or facultative obligatory contracts) considered in the calculation of the amount. _____
- 14.1 Is the company a cedant in a multiple cedant reinsurance contract? Yes No
- 14.2 If yes, please describe the method of allocating and recording reinsurance among the cedants:

- 14.3 If the answer to 14.1 is yes, are the methods described in item 14.2 entirely contained in the respective multiple cedant reinsurance contracts? Yes No
- 14.4 If the answer to 14.3 is no, are all the methods described in 14.2 entirely contained in written agreements? Yes No
- 14.5 If the answer to 14.4 is no, please explain:

- 15.1 Has the reporting entity guaranteed any financed premium accounts? Yes No
- 15.2 If yes, give full information

- 16.1 Does the reporting entity write any warranty business? Yes No
 If yes, disclose the following information for each of the following types of warranty coverage:
- | | | 1
Direct Losses
Incurred | 2
Direct Losses
Unpaid | 3
Direct Written
Premium | 4
Direct Premium
Unearned | 5
Direct Premium
Earned |
|------------------|----|--------------------------------|------------------------------|--------------------------------|---------------------------------|-------------------------------|
| 16.11 Home | \$ | | | | | |
| 16.12 Products | \$ | | | | | |
| 16.13 Automobile | \$ | | | | | |
| 16.14 Other* | \$ | | | | | |

* Disclose type of coverage: _____

GENERAL INTERROGATORIES

PART 2 – PROPERTY & CASUALTY INTERROGATORIES

17.1 Does the reporting entity include amounts recoverable on unauthorized reinsurance in Schedule F – Part 3 that is exempt from the statutory provision for unauthorized reinsurance? Yes [] No [X]

Incurred but not reported losses on contracts in force prior to July 1, 1984, and not subsequently renewed are exempt from the statutory provision for unauthorized reinsurance. Provide the following information for this exemption:

17.11 Gross amount of unauthorized reinsurance in Schedule F – Part 3 exempt from the statutory provision for unauthorized reinsurance	\$ _____
17.12 Unfunded portion of Interrogatory 17.11	\$ _____
17.13 Paid losses and loss adjustment expenses portion of Interrogatory 17.11	\$ _____
17.14 Case reserves portion of Interrogatory 17.11	\$ _____
17.15 Incurred but not reported portion of Interrogatory 17.11	\$ _____
17.16 Unearned premium portion of Interrogatory 17.11	\$ _____
17.17 Contingent commission portion of Interrogatory 17.11	\$ _____

18.1 Do you act as a custodian for health savings accounts? Yes [] No [X]

18.2 If yes, please provide the amount of custodial funds held as of the reporting date. \$ _____

18.3 Do you act as an administrator for health savings accounts? Yes [] No [X]

18.4 If yes, please provide the balance of the funds administered as of the reporting date. \$ _____

19. Is the reporting entity licensed or chartered, registered, qualified, eligible or writing business in at least two states? Yes [X] No []

19.1 If no, does the reporting entity assume reinsurance business that covers risks residing in at least one state other than the state of domicile of the reporting entity? Yes [] No [X]

FIVE – YEAR HISTORICAL DATA

Show amounts in whole dollars only, no cents; show percentages to one decimal place, i.e., 17.6.

	1	2	3	4	5
	2019	2018	2017	2016	2015
Gross Premiums Written (Page 8, Part 1B, Cols. 1, 2 & 3)					
1. Liability lines (Lines 11.1, 11.2, 16, 17.1, 17.2, 17.3, 18.1, 18.2, 19.1, 19.2 & 19.3, 19.4)	123,141,265	127,983,041	128,935,596	141,324,999	136,888,773
2. Property lines (Lines 1, 2, 9, 12, 21 & 26)					
3. Property and liability combined lines (Lines 3, 4, 5, 8, 22 & 27)					
4. All other lines (Lines 6, 10, 13, 14, 15, 23, 24, 28, 29, 30 & 34)					
5. Nonproportional reinsurance lines (Lines 31, 32 & 33)					
6. Total (Line 35)	123,141,265	127,983,041	128,935,596	141,324,999	136,888,773
Net Premiums Written (Page 8, Part 1B, Col. 6)					
7. Liability lines (Lines 11.1, 11.2, 16, 17.1, 17.2, 17.3, 18.1, 18.2, 19.1, 19.2 & 19.3, 19.4)	117,676,290	122,430,567	122,766,441	133,917,041	128,856,101
8. Property lines (Lines 1, 2, 9, 12, 21 & 26)					
9. Property and liability combined lines (Lines 3, 4, 5, 8, 22 & 27)					
10. All other lines (Lines 6, 10, 13, 14, 15, 23, 24, 28, 29, 30 & 34)					
11. Nonproportional reinsurance lines (Lines 31, 32 & 33)					
12. Total (Line 35)	117,676,290	122,430,567	122,766,441	133,917,041	128,856,101
Statement of Income (Page 4)					
13. Net underwriting gain (loss) (Line 8)	(4,767,327)	(9,881,959)	(18,436,841)	(13,505,748)	(10,196,130)
14. Net investment gain (loss) (Line 11)	18,294,700	14,745,961	14,666,795	15,259,711	14,110,815
15. Total other income (Line 15)	(530,101)	(683,656)	164,810	(389,491)	(315,566)
16. Dividends to policyholders (Line 17)	6,000,000			1,000,000	2,637,740
17. Federal and foreign income taxes incurred (Line 19)					
18. Net income (Line 20)	6,997,272	4,180,346	(3,605,236)	364,472	961,379
Balance Sheet Lines (Pages 2 and 3)					
19. Total admitted assets excluding protected cell business (Page 2, Line 26, Col. 3)	437,800,033	420,474,915	403,527,043	404,179,859	389,965,648
20. Premiums and considerations (Page 2, Col. 3)					
20.1 In course of collection (Line 15.1)	1,481,911	2,230,869	2,702,650	2,419,278	2,160,200
20.2 Deferred and not yet due (Line 15.2)	36,784,238	38,294,545	36,798,090	39,956,634	37,668,365
20.3 Accrued retrospective premiums (Line 15.3)					
21. Total liabilities excluding protected cell business (Page 3, Line 26)	273,552,789	266,837,667	250,534,714	245,641,583	231,749,322
22. Losses (Page 3, Line 1)	158,792,818	156,013,160	140,786,423	129,500,630	116,685,842
23. Loss adjustment expenses (Page 3, Line 3)	24,032,624	24,006,297	22,809,913	22,276,641	21,714,300
24. Unearned premiums (Page 3, Line 9)	58,465,479	61,924,620	62,163,222	65,732,771	64,223,166
25. Capital paid up (Page 3, Lines 30 & 31)					
26. Surplus as regards policyholders (Page 3, Line 37)	164,247,244	153,637,248	152,992,329	158,538,276	158,216,326
Cash Flow (Page 5)					
27. Net cash from operations (Line 11)	11,108,674	18,448,307	3,934,671	9,795,371	(5,107,913)
Risk-Based Capital Analysis					
28. Total adjusted capital	164,247,244	153,637,248	152,992,329	158,538,276	158,216,326
29. Authorized control level risk-based capital	21,421,165	20,681,855	18,723,717	18,649,086	17,960,776
Percentage Distribution of Cash, Cash Equivalents and Invested Assets (Page 2, Col. 3) (Item divided by Page 2, Line 12, Col. 3) x 100.0					
30. Bonds (Line 1)	77.3	81.3	88.3	89.3	89.2
31. Stocks (Lines 2.1 & 2.2)	14.9	11.8	5.4	5.2	4.4
32. Mortgage loans on real estate (Lines 3.1 and 3.2)					
33. Real estate (Lines 4.1, 4.2 & 4.3)	2.6	2.8	3.0	3.1	3.3
34. Cash, cash equivalents and short-term investments (Line 5)	5.2	3.8	3.2	2.3	3.1
35. Contract loans (Line 6)					
36. Derivatives (Line 7)					
37. Other invested assets (Line 8)	0.0	0.0	0.0	0.0	0.0
38. Receivables for securities (Line 9)	0.0	0.3	0.1		
39. Securities lending reinvested collateral assets (Line 10)					
40. Aggregate write-ins for invested assets (Line 11)					
41. Cash, cash equivalents and invested assets (Line 12)	100.0	100.0	100.0	100.0	100.0
Investments in Parent, Subsidiaries and Affiliates					
42. Affiliated bonds, (Sch. D, Summary, Line 12, Col. 1)					
43. Affiliated preferred stocks (Sch. D, Summary, Line 18, Col. 1)					
44. Affiliated common stocks (Sch. D, Summary, Line 24, Col. 1)	1,442,774	1,411,477	1,381,090	1,350,844	1,321,062
45. Affiliated short-term investments (subtotals included in Schedule DA Verification, Col. 5, Line 10)					
46. Affiliated mortgage loans on real estate					
47. All other affiliated					
48. Total of above Lines 42 to 47	1,442,774	1,411,477	1,381,090	1,350,844	1,321,062
49. Total investment in parent included in Lines 42 to 47 above					
50. Percentage of investments in parent, subsidiaries and affiliates to surplus as regards policyholders (Line 48 above divided by Page 3, Col. 1, Line 37 x 100.0)	0.9	0.9	0.9	0.9	0.8

FIVE – YEAR HISTORICAL DATA

(Continued)

	1	2	3	4	5
	2019	2018	2017	2016	2015
Capital and Surplus Accounts (Page 4)					
51. Net unrealized capital gains (losses) (Line 24)	5,251,861	(4,957,330)	213,857	(165,297)	(659,577)
52. Dividends to stockholders (Line 35)					
53. Change in surplus as regards policyholders for the year (Line 38)	10,609,996	644,919	(5,545,948)	321,951	141,561
Gross Losses Paid (Page 9, Part 2, Cols. 1 & 2)					
54. Liability lines (Lines 11.1, 11.2, 16, 17.1, 17.2, 17.3, 18.1, 18.2, 19.1, 19.2 & 19.3, 19.4)	67,796,601	69,823,507	76,971,115	74,785,010	81,790,285
55. Property lines (Lines 1, 2, 9, 12, 21 & 26)					
56. Property and liability combined lines (Lines 3, 4, 5, 8, 22 & 27)					
57. All other lines (Lines 6, 10, 13, 14, 15, 23, 24, 28, 29, 30 & 34)					
58. Nonproportional reinsurance lines (Lines 31, 32 & 33)					
59. Total (Line 35)	67,796,601	69,823,507	76,971,115	74,785,010	81,790,285
Net Losses Paid (Page 9, Part 2, Col. 4)					
60. Liability lines (Lines 11.1, 11.2, 16, 17.1, 17.2, 17.3, 18.1, 18.2, 19.1, 19.2 & 19.3, 19.4)	66,302,445	59,533,661	74,736,252	70,684,869	80,024,655
61. Property lines (Lines 1, 2, 9, 12, 21 & 26)					
62. Property and liability combined lines (Lines 3, 4, 5, 8, 22 & 27)					
63. All other lines (Lines 6, 10, 13, 14, 15, 23, 24, 28, 29, 30 & 34)					
64. Nonproportional reinsurance lines (Lines 31, 32 & 33)					
65. Total (Line 35)	66,302,445	59,533,661	74,736,252	70,684,869	80,024,655
Operating Percentages (Page 4) (Item divided by Page 4, Line 1) x 100.0					
66. Premiums earned (Line 1)	100.0	100.0	100.0	100.0	100.0
67. Losses incurred (Line 2)	57.0	60.9	68.1	63.1	60.6
68. Loss expenses incurred (Line 3)	16.2	17.0	18.0	16.8	16.3
69. Other underwriting expenses incurred (Line 4)	30.7	30.1	28.5	30.3	31.2
70. Net underwriting gain (loss) (Line 8)	(3.9)	(8.1)	(14.6)	(10.2)	(8.0)
Other Percentages					
71. Other underwriting expenses to net premiums written (Page 4, Lines 4 + 5 - 15 divided by Page 8, Part 1B, Col. 6, Line 35 x 100.0)	32.1	30.7	29.2	30.3	31.0
72. Losses and loss expenses incurred to premiums earned (Page 4, Lines 2 + 3 divided by Page 4, Line 1 x 100.0)	73.2	77.9	86.1	79.9	76.8
73. Net premiums written to policyholders' surplus (Page 8, Part 1B, Col. 6, Line 35 divided by Page 3, Line 37, Col. 1 x 100.0)	71.6	79.7	80.2	84.5	81.4
One Year Loss Development (\$000 omitted)					
74. Development in estimated losses and loss expenses incurred prior to current year (Schedule P, Part 2-Summary, Line 12, Col. 11)	1,567	5,696	12,917	11,800	7,738
75. Percent of development of losses and loss expenses incurred to policyholders' surplus of prior year end (Line 74 above divided by Page 4, Line 21, Col. 1 x 100.0)	1.0	3.7	8.1	7.5	4.9
Two Year Loss Development (\$000 omitted)					
76. Development in estimated losses and loss expenses incurred 2 years before the current year and prior year (Schedule P, Part 2-Summary, Line 12, Col. 12)	5,981	20,436	21,482	17,328	11,063
77. Percent of development of losses and loss expenses incurred to reported policyholders' surplus of second prior year end (Line 76 above divided by Page 4, Line 21, Col. 2 x 100.0)	3.9	12.9	13.6	11.0	7.0

NOTE: If a party to a merger, have the two most recent years of this exhibit been restated due to a merger in compliance with the disclosure requirements of SSAP No. 3, Accounting Changes and Correction of Errors?

Yes [] No []

If no, please explain:

.....
.....
.....

SCHEDULE P – ANALYSIS OF LOSSES AND LOSS EXPENSES

SCHEDULE P – PART 1 – SUMMARY

(\$000 omitted)

Years in Which Premiums Were Earned and Losses Were Incurred	Premiums Earned			Loss and Loss Expense Payments							12 Number of Claims Reported Direct and Assumed	
	1 Direct and Assumed	2 Ceded	3 Net (Cols. 1–2)	Loss Payments		Defense and Cost Containment Payments		Adjusting and Other Payments		10 Salvage and Subrogation Received		11 Total Net Paid (Cols. 4 - 5 + 6 - 7 + 8 - 9)
				4 Direct and Assumed	5 Ceded	6 Direct and Assumed	7 Ceded	8 Direct and Assumed	9 Ceded			
1. Prior	X X X	X X X	X X X	4,168	1,263	171	27	130	1	3,179	X X X	
2. 2010	91,451	8,028	83,423	69,917	9,475	3,615	120	13,741	1,218	77,678	X X X	
3. 2011	92,459	7,451	85,008	71,833	2,094	4,768	76	13,605	1,714	88,036	X X X	
4. 2012	102,597	8,432	94,165	73,744	1,794	5,165	29	13,737	966	90,823	X X X	
5. 2013	111,600	8,778	102,822	73,813		5,376		14,053	1,239	93,242	X X X	
6. 2014	126,456	7,849	118,607	71,074		5,777		14,636	1,247	91,487	X X X	
7. 2015	135,250	8,033	127,217	70,993		6,480		14,977	1,240	92,450	X X X	
8. 2016	139,815	7,408	132,407	61,817		5,713		14,755	906	82,285	X X X	
9. 2017	132,505	6,169	126,336	52,765		5,731		14,524	529	73,020	X X X	
10. 2018	128,222	5,552	122,670	38,104		4,003		12,172	252	54,279	X X X	
11. 2019	126,600	5,465	121,135	17,395		1,439		9,234	41	28,068	X X X	
12. Totals	X X X	X X X	X X X	605,623	14,626	48,238	252	135,564	9,353	774,547	X X X	

	Losses Unpaid				Defense and Cost Containment Unpaid				Adjusting and Other Unpaid		23 Salvage and Subrogation Anticipated	24 Total Net Losses and Expenses Unpaid	25 Number of Claims Outstanding Direct and Assumed
	Case Basis		Bulk + IBNR		Case Basis		Bulk + IBNR		Other Unpaid				
	13 Direct and Assumed	14 Ceded	15 Direct and Assumed	16 Ceded	17 Direct and Assumed	18 Ceded	19 Direct and Assumed	20 Ceded	21 Direct and Assumed	22 Ceded			
1. Prior	26,016	10,718	431		618	244			2,278			18,381	X X X
2. 2010	8,665		107		99			1	829			9,701	X X X
3. 2011	1,520		610		85			2	198			2,415	X X X
4. 2012	9,257	5,590	460	1	117	21		2	936			5,160	X X X
5. 2013	2,651		409	1	248			7	234			3,548	X X X
6. 2014	3,405		862	140	203			8	383			4,721	X X X
7. 2015	5,359	548	2,211	485	290	5		11	674			7,507	X X X
8. 2016	8,966		2,967	606	472			37	1,091			12,927	X X X
9. 2017	12,944	940	6,413	599	747	4		38	1,739			20,338	X X X
10. 2018	22,223	749	11,855	777	1,330	17		145	24	3,062		37,048	X X X
11. 2019	24,393		29,799	1,577	2,123			394	60	6,009		61,081	X X X
12. Totals	125,399	18,545	56,124	4,186	6,332	291		645	84	17,433		182,827	X X X

	Total Losses and Loss Expenses Incurred			Loss and Loss Expense Percentage (Incurred/Premiums Earned)			Nontabular Discount		34 Inter-Company Pooling Participation Percentage	Net Balance Sheet Reserves After Discount	
	26 Direct and Assumed	27 Ceded	28 Net	29 Direct and Assumed	30 Ceded	31 Net	32 Loss	33 Loss Expense		35 Losses Unpaid	36 Loss Expenses Unpaid
1. Prior	X X X	X X X	X X X	X X X	X X X	X X X			X X X	15,729	2,652
2. 2010	96,974	9,595	87,379	106,039	119,519	104,742				8,772	929
3. 2011	92,621	2,170	90,451	100,175	29,124	106,403				2,130	285
4. 2012	103,418	7,435	95,983	100,800	88,176	101,931				4,126	1,034
5. 2013	96,791	1	96,790	86,730	0,011	94,134				3,059	489
6. 2014	96,348	140	96,208	76,191	1,784	81,115				4,127	594
7. 2015	100,995	1,038	99,957	74,673	12,922	78,572				6,537	970
8. 2016	95,818	606	95,212	68,532	8,180	71,909				11,327	1,600
9. 2017	94,901	1,543	93,358	71,621	25,012	73,897				17,818	2,520
10. 2018	92,894	1,567	91,327	72,448	28,224	74,449				32,552	4,496
11. 2019	90,786	1,637	89,149	71,711	29,954	73,595				52,615	8,466
12. Totals	X X X	X X X	X X X	X X X	X X X	X X X			X X X	158,792	24,035

Note: Parts 2 and 4 are gross of all discounting, including tabular discounting. Part 1 is gross of only nontabular discounting, which is reported in Columns 32 and 33 of Part 1. The tabular discount, if any, is reported in the Notes to Financial Statements, which will reconcile Part 1 with Parts 2 and 4.

SCHEDULE P – PART 2 – SUMMARY

Years in Which Losses Were Incurred	INCURRED NET LOSSES AND DEFENSE AND COST CONTAINMENT EXPENSES REPORTED AT YEAR END (\$000 OMITTED)										DEVELOPMENT	
	1	2	3	4	5	6	7	8	9	10	11	12
	2010	2011	2012	2013	2014	2015	2016	2017	2018	2019	One Year	Two Year
1. Prior	122,657	107,101	98,418	94,271	92,669	90,210	90,793	91,942	94,923	95,431	508	3,489
2. 2010	76,022	70,119	71,877	71,614	71,564	71,495	71,301	71,870	71,631	72,809	1,178	939
3. 2011	XXX	74,526	72,740	76,045	75,607	76,228	77,123	77,981	76,749	76,648	(101)	(1,333)
4. 2012	XXX	XXX	72,829	70,713	74,930	77,098	77,830	77,818	81,396	81,310	(86)	3,492
5. 2013	XXX	XXX	XXX	68,900	70,847	77,575	79,980	80,874	82,312	82,503	191	1,629
6. 2014	XXX	XXX	XXX	XXX	71,727	72,476	77,645	79,693	81,150	81,189	39	1,496
7. 2015	XXX	XXX	XXX	XXX	XXX	76,340	78,550	82,726	84,528	84,306	(222)	1,580
8. 2016	XXX	XXX	XXX	XXX	XXX	XXX	78,929	82,164	79,898	79,366	(532)	(2,798)
9. 2017	XXX	XXX	XXX	XXX	XXX	XXX	XXX	79,608	77,785	77,095	(690)	(2,513)
10. 2018	XXX	XXX	XXX	XXX	XXX	XXX	XXX	XXX	74,811	76,093	1,282	XXX
11. 2019	XXX	XXX	XXX	XXX	XXX	XXX	XXX	XXX	XXX	73,906	XXX	XXX
	12. Totals										1,567	5,981

SCHEDULE P – PART 3 – SUMMARY

Years in Which Losses Were Incurred	CUMULATIVE PAID NET LOSSES AND DEFENSE AND COST CONTAINMENT EXPENSES REPORTED AT YEAR END (\$000 OMITTED)										11	12
	1	2	3	4	5	6	7	8	9	10	Number of Claims Closed With Loss Payment	Number of Claims Closed Without Loss Payment
	2010	2011	2012	2013	2014	2015	2016	2017	2018	2019		
1. Prior	000	30,180	47,646	58,341	66,121	71,884	72,718	73,760	76,279	79,328	XXX	XXX
2. 2010	19,837	42,857	55,129	62,826	66,311	68,406	69,153	69,888	63,201	63,937	XXX	XXX
3. 2011	XXX	23,047	47,788	61,476	68,165	71,816	73,808	75,541	73,921	74,431	XXX	XXX
4. 2012	XXX	XXX	22,951	47,028	59,942	69,839	72,878	74,948	76,383	77,086	XXX	XXX
5. 2013	XXX	XXX	XXX	22,356	47,655	63,415	70,425	74,609	77,290	79,189	XXX	XXX
6. 2014	XXX	XXX	XXX	XXX	23,720	47,311	63,010	70,957	74,731	76,851	XXX	XXX
7. 2015	XXX	XXX	XXX	XXX	XXX	25,793	50,731	66,183	74,073	77,473	XXX	XXX
8. 2016	XXX	XXX	XXX	XXX	XXX	XXX	23,204	48,956	61,396	67,530	XXX	XXX
9. 2017	XXX	XXX	XXX	XXX	XXX	XXX	XXX	22,104	46,204	58,496	XXX	XXX
10. 2018	XXX	XXX	XXX	XXX	XXX	XXX	XXX	XXX	19,030	42,107	XXX	XXX
11. 2019	XXX	XXX	XXX	XXX	XXX	XXX	XXX	XXX	XXX	18,834	XXX	XXX

SCHEDULE P – PART 4 – SUMMARY

Years in Which Losses Were Incurred	BULK AND IBNR RESERVES ON NET LOSSES AND DEFENSE AND COST CONTAINMENT EXPENSES REPORTED AT YEAR END (\$000 OMITTED)									
	1	2	3	4	5	6	7	8	9	10
	2010	2011	2012	2013	2014	2015	2016	2017	2018	2019
1. Prior	33,644	18,109	7,600	3,022	1,772	719	485	1,063	476	431
2. 2010	19,521	3,960	2,281	872	601	188	70	187	99	108
3. 2011	XXX	22,862	5,413	3,086	998	352	180	874	639	612
4. 2012	XXX	XXX	24,958	7,272	2,172	1,025	663	190	709	461
5. 2013	XXX	XXX	XXX	22,212	4,772	2,360	1,983	888	579	415
6. 2014	XXX	XXX	XXX	XXX	26,713	7,691	3,557	1,766	833	730
7. 2015	XXX	XXX	XXX	XXX	XXX	26,583	10,853	3,781	1,908	1,737
8. 2016	XXX	XXX	XXX	XXX	XXX	XXX	29,415	14,155	5,351	2,398
9. 2017	XXX	XXX	XXX	XXX	XXX	XXX	XXX	31,668	12,543	5,852
10. 2018	XXX	XXX	XXX	XXX	XXX	XXX	XXX	XXX	28,055	11,199
11. 2019	XXX	XXX	XXX	XXX	XXX	XXX	XXX	XXX	XXX	28,556

SCHEDULE T - EXHIBIT OF PREMIUMS WRITTEN
Allocated By States and Territories

States, Etc.	1	Gross Premiums, Including Policy and Membership Fees Less Return Premiums and Premiums on Policies Not Taken		4	5	6	7	8	9
		Active Status (a)	2						
		Direct Premiums Written	Direct Premiums Earned	Dividends Paid or Credited to Policyholders on Direct Business	Direct Losses Paid (Deducting Salvage)	Direct Losses Incurred	Direct Losses Unpaid	Finance and Service Charges Not Included in Premiums	Direct Premium Written for Federal Purchasing Groups (Included in Col. 2)
1. Alabama	AL	N							
2. Alaska	AK	N							
3. Arizona	AZ	N							
4. Arkansas	AR	N							
5. California	CA	N							
6. Colorado	CO	N							
7. Connecticut	CT	N							
8. Delaware	DE	N							
9. District of Columbia	DC	N							
10. Florida	FL	N							
11. Georgia	GA	N							
12. Hawaii	HI	N							
13. Idaho	ID	N							
14. Illinois	IL	N							
15. Indiana	IN	N							
16. Iowa	IA	N							
17. Kansas	KS	N							
18. Kentucky	KY	N							
19. Louisiana	LA	N							
20. Maine	ME	N							
21. Maryland	MD	N							
22. Massachusetts	MA	L							
23. Michigan	MI	N							
24. Minnesota	MN	N							
25. Mississippi	MS	N							
26. Missouri	MO	N							
27. Montana	MT	N							
28. Nebraska	NE	N							
29. Nevada	NV	N							
30. New Hampshire	NH	N							
31. New Jersey	NJ	N							
32. New Mexico	NM	N							
33. New York	NY	N							
34. North Carolina	NC	N							
35. North Dakota	ND	N							
36. Ohio	OH	N							
37. Oklahoma	OK	N							
38. Oregon	OR	N							
39. Pennsylvania	PA	N							
40. Rhode Island	RI	L	120,457,495	122,650,393	5,812,800	65,043,652	67,566,356	169,014,770	103,330
41. South Carolina	SC	N							
42. South Dakota	SD	N							
43. Tennessee	TN	N							
44. Texas	TX	N							
45. Utah	UT	N							
46. Vermont	VT	N							
47. Virginia	VA	N							
48. Washington	WA	N							
49. West Virginia	WV	N							
50. Wisconsin	WI	N							
51. Wyoming	WY	N							
52. American Samoa	AS	N							
53. Guam	GU	N							
54. Puerto Rico	PR	N							
55. U.S. Virgin Islands	VI	N							
56. Northern Mariana Islands	MP	N							
57. Canada	CAN	N							
58. Aggregate Other Alien	OT	X X X							
59. Totals	(a) 2		120,457,495	122,650,393	5,812,800	65,043,652	67,566,356	169,014,770	103,330

DETAILS OF WRITE-INS									
58001.		X X X							
58002.		X X X							
58003.		X X X							
58998.	Summary of remaining write-ins for Line 58 from overflow page	X X X							
58999.	Totals (Lines 58001 through 58003 plus 58998) (Line 58 above)	X X X							

NONE

Explanation of basis of allocation of premiums by states, etc.

(a) Active Status Counts

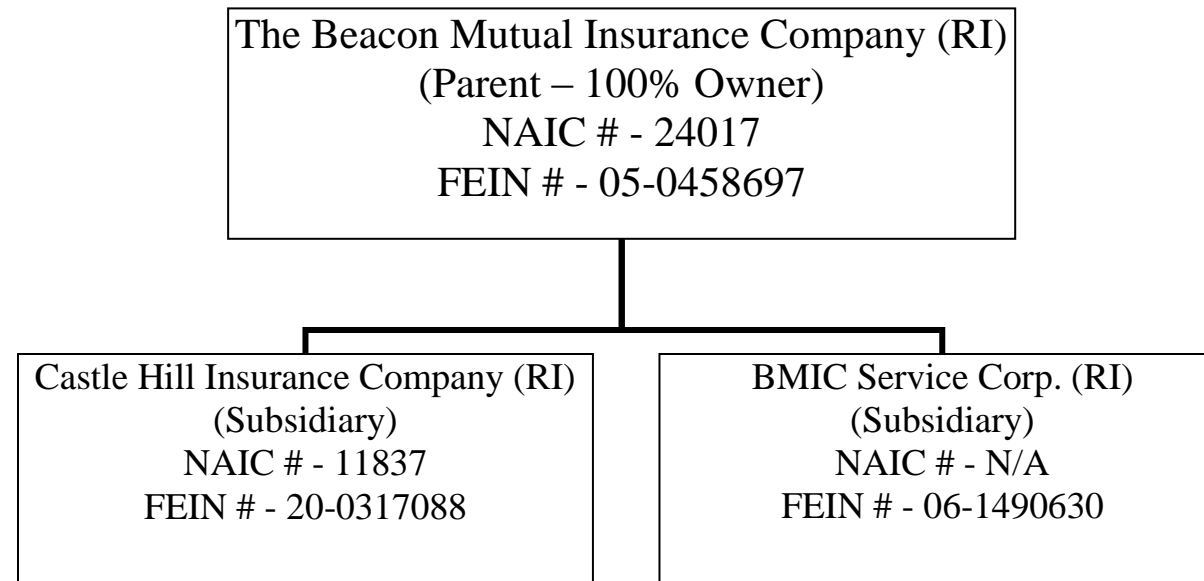
- L - Licensed or Chartered - Licensed insurance carrier or domiciled RRG 2
- E - Eligible - Reporting entities eligible or approved to write surplus lines in the state _____
- D - Domestic Surplus Lines Insurer (DSL) - Reporting entities authorized to write surplus lines in the state of domicile _____
- R - Registered - Non-domiciled RRGs _____
- Q - Qualified - Qualified or accredited reinsurer _____
- N - None of the above - Not allowed to write business in the state (other than their state of domicile - See DSL) 55

Explanation of basis of allocation of premiums by states, etc.

None

SCHEDULE Y - INFORMATION CONCERNING ACTIVITIES OF INSURER MEMBERS OF A HOLDING COMPANY GROUP

PART 1 - ORGANIZATIONAL CHART



OVERFLOW PAGE FOR WRITE-INS

Page 2 - Continuation

ASSETS

	Current Year			Prior Year
	1	2	3	4
REMAINING WRITE-INS AGGREGATED AT LINE 25 FOR OTHER THAN INVESTED ASSETS	Assets	Nonadmitted Assets	Net Admitted Assets (Cols. 1 - 2)	Net Admitted Assets
2504. Miscellaneous Receivables	51,064	41,511	9,553	20,489
2597. Totals (Lines 2504 through 2596) (Page 2, Line 2598)	51,064	41,511	9,553	20,489

OVERFLOW PAGE FOR WRITE-INS

**Page 4 - Continuation
STATEMENT OF INCOME**

REMAINING WRITE-INS AGGREGATED AT LINE 14 FOR MISCELLANEOUS INCOME	1	2
	Current Year	Prior Year
1404. Interest and Penalties	(500)	
1405. Retroactive Reinsurance Gain (Loss)	(30,780)	(35,162)
1497. Totals (Lines 1404 through 1496) (Page 4, Line 1498)	(31,280)	(35,162)

ALPHABETICAL INDEX TO PROPERTY ANNUAL STATEMENT

Assets	2	Schedule E – Part 3 – Special Deposits	E29
Cash Flow	5	Schedule F – Part 1	20
Exhibit of Capital Gains (Losses)	12	Schedule F – Part 2	21
Exhibit of Net Investment Income	12	Schedule F – Part 3	22
Exhibit of Nonadmitted Assets	13	Schedule F – Part 4	27
Exhibit of Premiums and Losses (State Page)	19	Schedule F – Part 5	28
Five-Year Historical Data	17	Schedule F – Part 6	29
General Interrogatories	15	Schedule H – Accident and Health Exhibit – Part 1	30
Jurat Page	1	Schedule H – Part 2, Part 3 and Part 4	31
Liabilities, Surplus and Other Funds	3	Schedule H – Part 5 – Health Claims	32
Notes To Financial Statements	14	Schedule P – Part 1 – Summary	33
Overflow Page For Write-ins	100	Schedule P – Part 1A – Homeowners/Farmowners	35
Schedule A – Part 1	E01	Schedule P – Part 1B – Private Passenger Auto Liability/Medical	36
Schedule A – Part 2	E02	Schedule P – Part 1C – Commercial Auto/Truck Liability/Medical	37
Schedule A – Part 3	E03	Schedule P – Part 1D – Workers' Comp (Excluding Excess Workers' Comp)	38
Schedule A – Verification Between Years	SI02	Schedule P – Part 1E – Commercial Multiple Peril	39
Schedule B – Part 1	E04	Schedule P – Part 1F – Section 1 – Medical Professional Liability	
Schedule B – Part 2	E05	– Occurrence	40
Schedule B – Part 3	E06	Schedule P – Part 1F – Section 2 – Medical Professional Liability	
Schedule B – Verification Between Years	SI02	– Claims-Made	41
Schedule BA – Part 1	E07	Schedule P – Part 1G – Special Liability (Ocean, Marine, Aircraft (All	
Schedule BA – Part 2	E08	Perils), Boiler and Machinery)	42
Schedule BA – Part 3	E09	Schedule P – Part 1H – Section 1 – Other Liability – Occurrence	43
Schedule BA – Verification Between Years	SI03	Schedule P – Part 1H – Section 2 – Other Liability – Claims-Made	44
Schedule D – Part 1	E10	Schedule P – Part 1I – Special Property (Fire, Allied Lines, Inland Marine,	
Schedule D – Part 1A – Section 1	SI05	Earthquake, Burglary & Theft)	45
Schedule D – Part 1A – Section 2	SI08	Schedule P – Part 1J – Auto Physical Damage	46
Schedule D – Part 2 – Section 1	E11	Schedule P – Part 1K – Fidelity/Surety	47
Schedule D – Part 2 – Section 2	E12	Schedule P – Part 1L – Other (Including Credit, Accident and Health)	48
Schedule D – Part 3	E13	Schedule P – Part 1M – International	49
Schedule D – Part 4	E14	Schedule P – Part 1N – Reinsurance - Nonproportional Assumed Property	50
Schedule D – Part 5	E15	Schedule P – Part 1O – Reinsurance - Nonproportional Assumed Liability	51
Schedule D – Part 6 – Section 1	E16	Schedule P – Part 1P – Reinsurance - Nonproportional Assumed Financial Lines	52
Schedule D – Part 6 – Section 2	E16	Schedule P – Part 1R – Section 1 – Products Liability – Occurrence	53
Schedule D – Summary By Country	SI04	Schedule P – Part 1R – Section 2 – Products Liability – Claims – Made	54
Schedule D – Verification Between Years	SI03	Schedule P – Part 1S – Financial Guaranty/Mortgage Guaranty	55
Schedule DA – Part 1	E17	Schedule P – Part 1T – Warranty	56
Schedule DA – Verification Between Years	SI10	Schedule P – Part 2, Part 3 and Part 4 - Summary	34
Schedule DB – Part A – Section 1	E18	Schedule P – Part 2A – Homeowners/Farmowners	57
Schedule DB – Part A – Section 2	E19	Schedule P – Part 2B – Private Passenger Auto Liability/Medical	57
Schedule DB – Part A – Verification Between Years	SI11	Schedule P – Part 2C – Commercial Auto/Truck Liability/Medical	57
Schedule DB – Part B – Section 1	E20	Schedule P – Part 2D – Workers' Comp (Excluding Excess Workers' Comp)	57
Schedule DB – Part B – Section 2	E21	Schedule P – Part 2E – Commercial Multiple Peril	57
Schedule DB – Part B – Verification Between Years	SI11	Schedule P – Part 2F – Section 1 – Medical Professional Liability	
Schedule DB – Part C – Section 1	SI12	– Occurrence	58
Schedule DB – Part C – Section 2	SI13	Schedule P - Part 2F - Medical Professional Liability - Claims - Made	58
Schedule DB - Part D - Section 1	E22	Schedule P – Part 2G – Special Liability (Ocean Marine, Aircraft (All Perils),	
Schedule DB - Part D - Section 2	E23	Boiler and Machinery)	58
Schedule DB - Verification	SI14	Schedule P – Part 4I – Special Property (Fire, Allied Lines, Inland Marine,	
Schedule DB - Part E	E24	Earthquake, Burglary and Theft)	69
Schedule DL - Part 1	E25	Schedule P – Part 4J – Auto Physical Damage	69
Schedule DL - Part 2	E26	Schedule P – Part 4K – Fidelity/Surety	69
Schedule E – Part 1 – Cash	E27	Schedule P – Part 4L – Other (Including Credit, Accident and Health)	69
Schedule E – Part 2 – Cash Equivalents	E28	Schedule P – Part 4M – International	69

ALPHABETICAL INDEX TO PROPERTY ANNUAL STATEMENT

Schedule P – Part 2H – Section 1 – Other Liability – Occurrence	58	Schedule P – Part 4O – Reinsurance - Nonproportional Assumed Liability	70
Schedule P – Part 2H – Section 2 – Other Liability – Claims – Made	58	Schedule P – Part 4P – Reinsurance - Nonproportional Assumed Financial Lines	70
Schedule P – Part 2I – Special Property (Fire, Allied Lines, Inland Marine, Earthquake, Burglary, and Theft)	59	Schedule P – Part 4R – Section 1 – Products Liability – Occurrence	71
Schedule P – Part 2J – Auto Physical Damage	59	Schedule P – Part 4R – Section 2 – Products Liability – Claims-Made	71
Schedule P – Part 2K – Fidelity, Surety	59	Schedule P – Part 4S – Financial Guaranty/Mortgage Guaranty	71
Schedule P – Part 2L – Other (Including Credit, Accident and Health)	59	Schedule P – Part 4T – Warranty	71
Schedule P – Part 2M – International	59	Schedule P – Part 5A – Homeowners/Farmowners	72
Schedule P – Part 2N – Reinsurance - Nonproportional Assumed Property	60	Schedule P – Part 5B – Private Passenger Auto Liability/Medical	73
Schedule P – Part 2O – Reinsurance - Nonproportional Assumed Liability	60	Schedule P – Part 5C – Commercial Auto/Truck Liability/Medical	74
Schedule P – Part 2P – Reinsurance - Nonproportional Assumed Financial Lines	60	Schedule P – Part 5D – Workers' Comp (Excluding Excess Workers' Comp)	75
Schedule P – Part 2R – Section 1 – Products Liability – Occurrence	61	Schedule P – Part 5E – Commercial Multiple Peril	76
Schedule P – Part 2R – Section 2 – Products Liability – Claims-Made	61	Schedule P – Part 5F – Medical Professional Liability – Claims-Made	78
Schedule P – Part 2S – Financial Guaranty/Mortgage Guaranty	61	Schedule P – Part 5F – Medical Professional Liability – Occurrence	77
Schedule P – Part 2T – Warranty	61	Schedule P – Part 5H – Other Liability – Claims-Made	80
Schedule P – Part 3A – Homeowners/Farmowners	62	Schedule P – Part 5H – Other Liability – Occurrence	79
Schedule P – Part 3B – Private Passenger Auto Liability/Medical	62	Schedule P – Part 5R – Products Liability – Claims-Made	82
Schedule P – Part 3C – Commercial Auto/Truck Liability/Medical	62	Schedule P – Part 5R – Products Liability – Occurrence	81
Schedule P – Part 3D – Workers' Comp (Excluding Excess Workers' Comp)	62	Schedule P – Part 5T – Warranty	83
Schedule P – Part 3E – Commercial Multiple Peril	62	Schedule P – Part 6C – Commercial Auto/Truck Liability/Medical	84
Schedule P – Part 3F – Section 1 – Medical Professional Liability – Occurrence	63	Schedule P – Part 6D – Workers' Comp (Excluding Excess Workers' Comp)	84
Schedule P – Part 3F – Section 2 – Medical Professional Liability – Claims-Made	63	Schedule P – Part 6E – Commercial Multiple Peril	85
Schedule P – Part 3G – Special Liability (Ocean Marine, Aircraft (All Perils), Boiler and Machinery)	63	Schedule P – Part 6H – Other Liability – Claims-Made	86
Schedule P – Part 3H – Section 1 – Other Liability – Occurrence	63	Schedule P – Part 6H – Other Liability – Occurrence	85
Schedule P – Part 3H – Section 2 – Other Liability – Claims-Made	63	Schedule P – Part 6M – International	86
Schedule P – Part 3I – Special Property (Fire, Allied Lines, Inland Marine, Earthquake, Burglary, and Theft)	64	Schedule P – Part 6N – Reinsurance - Nonproportional Assumed Property	87
Schedule P – Part 3J – Auto Physical Damage	64	Schedule P – Part 6O – Reinsurance - Nonproportional Assumed Liability	87
Schedule P – Part 3K – Fidelity/Surety	64	Schedule P – Part 6R – Products Liability – Claims-Made	88
Schedule P – Part 3L – Other (Including Credit, Accident and Health)	64	Schedule P – Part 6R – Products Liability – Occurrence	88
Schedule P – Part 3M – International	64	Schedule P – Part 7A – Primary Loss Sensitive Contracts	89
Schedule P – Part 3N – Reinsurance - Nonproportional Assumed Property	65	Schedule P – Part 7B – Reinsurance Loss Sensitive Contracts	91
Schedule P – Part 3O – Reinsurance - Nonproportional Assumed Liability	65	Schedule P Interrogatories	93
Schedule P – Part 3P – Reinsurance - Nonproportional Assumed Financial Lines	65	Schedule T – Exhibit of Premiums Written	94
Schedule P – Part 3R – Section 1 – Products Liability – Occurrence	66	Schedule T – Part 2 – Interstate Compact	95
Schedule P – Part 3R – Section 2 – Products Liability – Claims-Made	66	Schedule Y – Information Concerning Activities of Insurer Members of a Holding Company Group	96
Schedule P – Part 3S – Financial Guaranty/Mortgage Guaranty	66	Schedule Y - Part 1A - Detail of Insurance Holding Company System	97
Schedule P – Part 3T – Warranty	66	Schedule Y – Part 2 – Summary of Insurer's Transactions With Any Affiliates	98
Schedule P – Part 4A – Homeowners/Farmowners	67	Statement of Income	4
Schedule P – Part 4B – Private Passenger Auto Liability/Medical	67	Summary Investment Schedule	SI01
Schedule P – Part 4C – Commercial Auto/Truck Liability/Medical	67	Supplemental Exhibits and Schedules Interrogatories	99
Schedule P – Part 4D – Workers' Comp (Excluding Excess Workers' Comp)	67	Underwriting and Investment Exhibit Part 1	6
Schedule P – Part 4E – Commercial Multiple Peril	67	Underwriting and Investment Exhibit Part 1A	7
Schedule P – Part 4F – Section 1 – Medical Professional Liability – Occurrence	68	Underwriting and Investment Exhibit Part 1B	8
Schedule P – Part 4F – Section 2 – Medical Professional Liability – Claims-Made	68	Underwriting and Investment Exhibit Part 2	9
Schedule P – Part 4G – Special Liability (Ocean Marine, Aircraft (All Perils), Boiler and Machinery)	68	Underwriting and Investment Exhibit Part 2A	10
Schedule P – Part 4H – Section 1 – Other Liability – Occurrence	68	Underwriting and Investment Exhibit Part 3	11
Schedule P – Part 4H – Section 2 – Other Liability – Claims-Made	68		